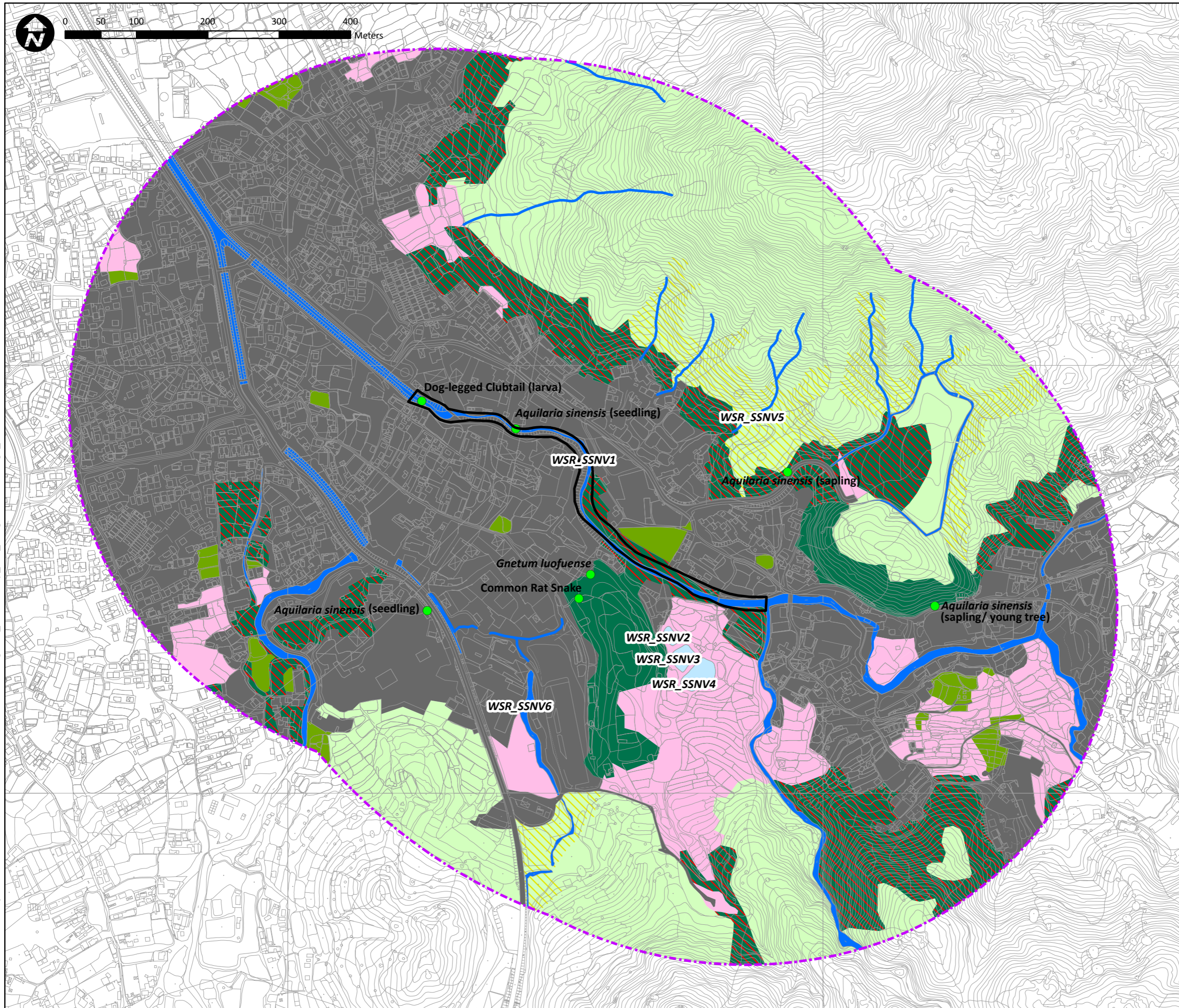


Document Path: D:\Project\CE222013(DS) PER and EIA\Info\GIS files\mxd\Figure5_habitatmap_SCS_SungShanNewVillage_20181002.mxd



● Species of Conservation Concern

▭ Work Limit Boundary

▭ 500m Study Area

Habitat

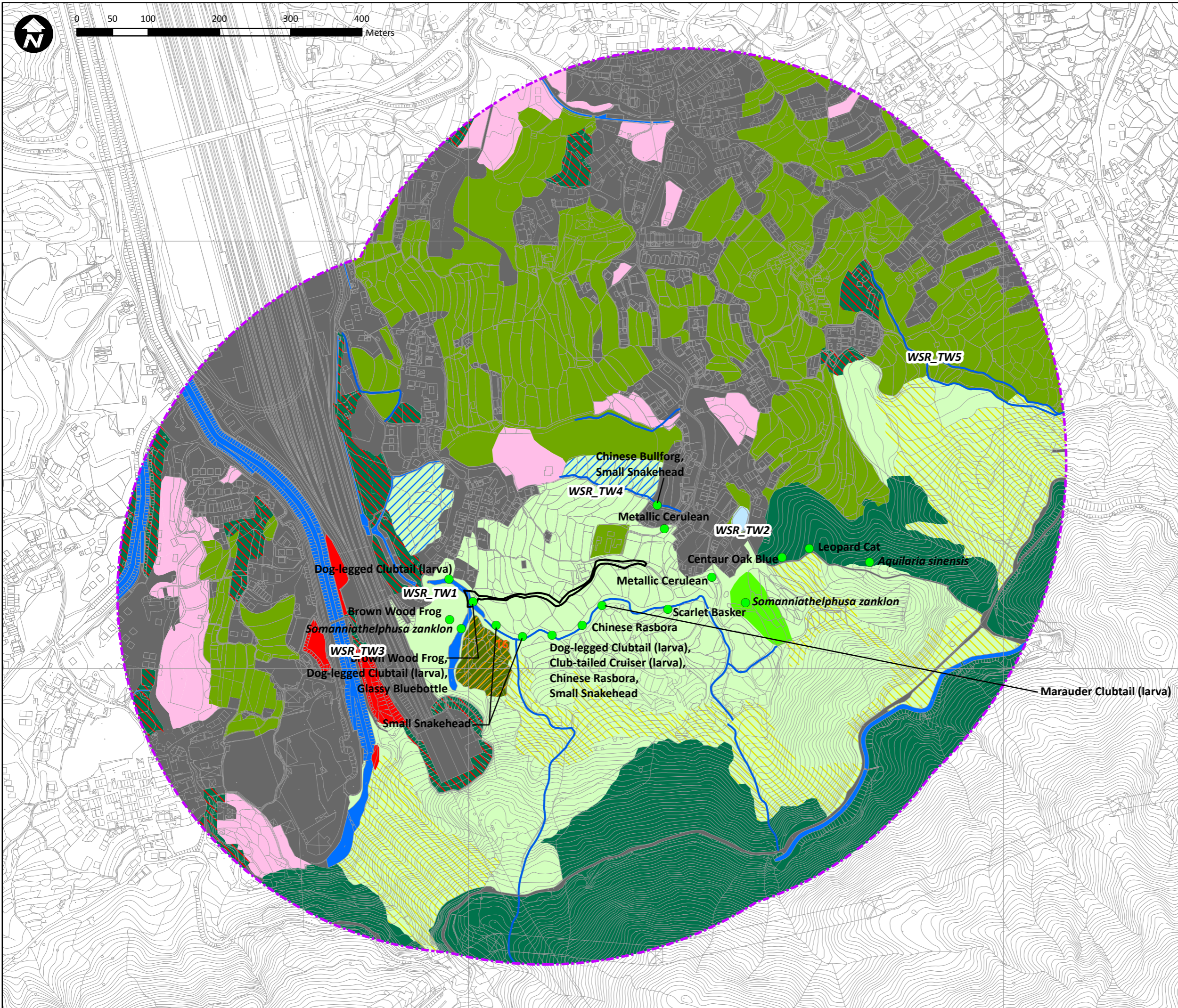
- Agricultural Land
- Pond
- Watercourse
- Grassland
- Grassland/Shrubland
- Secondary Woodland
- Plantation
- Waste Ground
- Urban/Residential Area



Project Title:
Agreement No. CE 22/2013 (DS)
Drainage Improvement Works in Yuen Long, Stage 1
Investigation, Design and Construction

Figure Title:
Water Sensitive Receivers
At Sung Shan New Village

Drawn by:	ST	Scale:	1:4,980 on A3
Checked By:	EL	Date:	Sep 2019
Approved by:	JC		
Figure Number:	Figure 6.1		Revision:
			2



- Species of Conservation Concern
- 500m Study Area
- Work Limit Boundary
- Agricultural Land
- Pond
- Marsh
- Mitigation Wetland
- Watercourse
- Seasonally Wet Grassland
- Grassland
- Grassland/Shrubland
- Secondary Woodland
- Orchard
- Plantation
- Waste Ground
- Urban/Residential Area

WSR_TW1
 Dog-legged Clubtail (larva)
 Brown Wood Frog
Somanniathelphusa zanklon
 Dog-legged Clubtail (larva),
 Glassy Bluebottle
 Small Snakehead

WSR_TW2
 Centaur Oak Blue
 Leopard Cat
Aquilaria sinensis
 Somanniathelphusa zanklon
 Scarlet Basker

WSR_TW3
 Brown Wood Frog,
 Dog-legged Clubtail (larva),
 Glassy Bluebottle
 Small Snakehead

WSR_TW4
 Chinese Bullfrog,
 Small Snakehead
 Metallic Cerulean
 Chinese Rasbora
 Dog-legged Clubtail (larva),
 Club-tailed Cruiser (larva),
 Chinese Rasbora,
 Small Snakehead

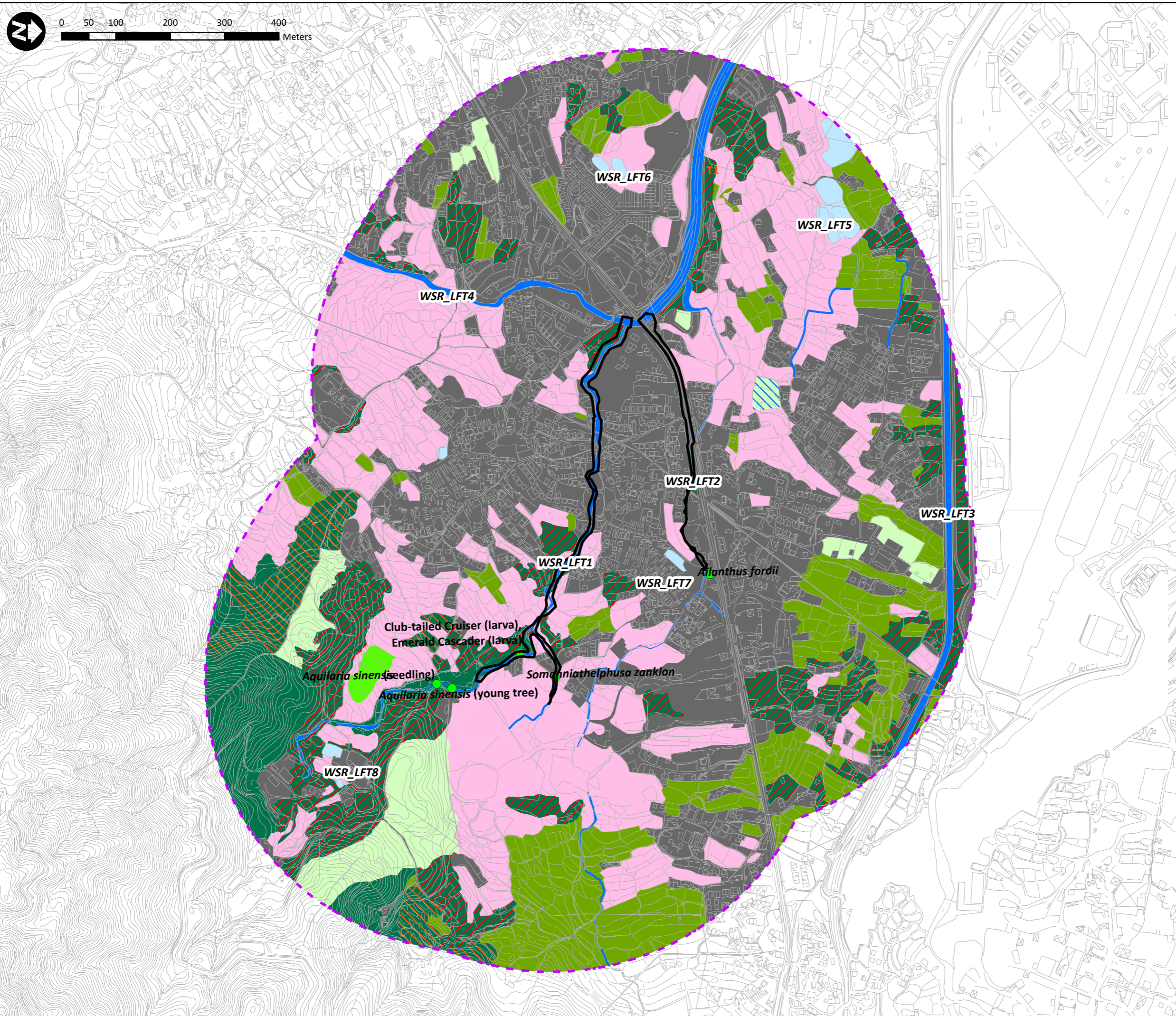
WSR_TW5
 Marauder Clubtail (larva)



Project Title:
**Agreement No. CE 22/2013 (DS)
 Drainage Improvement Works in Yuen Long, Stage 1
 Investigation, Design and Construction**

Figure Title:
**Water Sensitive Receivers
 At Tai Wo**

Drawn by:	ST	Scale:	1:5,003 on A3
Checked By:	EL	Date:	Sep 2019
Approved by:	JC		
Figure Number:	Figure 6.2		Revision: 2



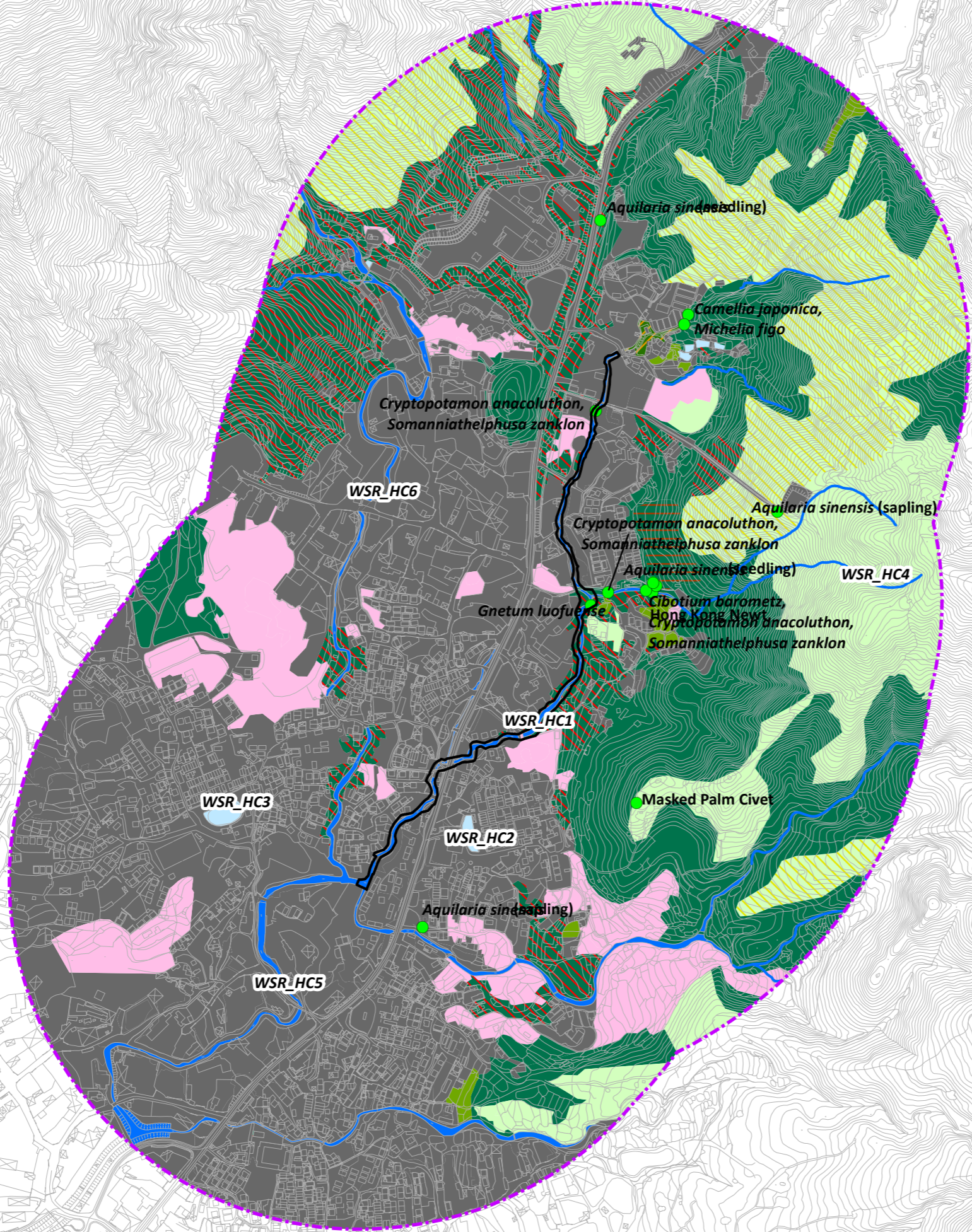
- Species of Conservation Concern
- Work Limit Boundary
- 500m Study Area
- Agricultural Land
- Pond
- Marsh
- Watercourse
- Seasonally Wet Grassland
- Grassland
- Secondary Woodland
- Orchard
- Plantation
- Waste Ground
- Urban/Residential Area

ATKINS

Project Title:
Agreement No. CE 22/2013 (DS)
Drainage Improvement Works in Yuen Long, Stage 1
Investigation, Design and Construction

Figure Title:
Water Sensitive Receivers
At Lin Fa Tei

Drawn by:	ST	Scale:	1:6,611 on A3
Checked By:	EL	Date:	Oct 2018
Approved by:	JC		
Figure Number:	Figure 6.3		Revision: 1



- Species of Conservation Concern
- 500m Study Area
- Work Limit Boundary
- Agricultural Land
- Pond
- Watercourse
- Grassland
- Grassland/Shrubland
- Secondary Woodland
- Fung Shui Wood
- Orchard
- Plantation
- Waste Ground
- Urban/Residential Area

ATKINS

Project Title:
Agreement No. CE 22/2013 (DS)
Drainage Improvement Works in Yuen Long, Stage 1
Investigation, Design and Construction

Figure Title:
Water Sensitive Receivers
At Ha Che

Drawn by:	ST	Scale:	1:6,820 on A3
Checked By:	EL	Date:	Oct 2018
Approved by:	JC		
Figure Number:	Figure 6.4		Revision: 1