

Monitoring Location Category

- Control
- ▲ Impact
- Species of Conservation Concern

- Work Limit Boundary
- 500m Study Area

Habitat

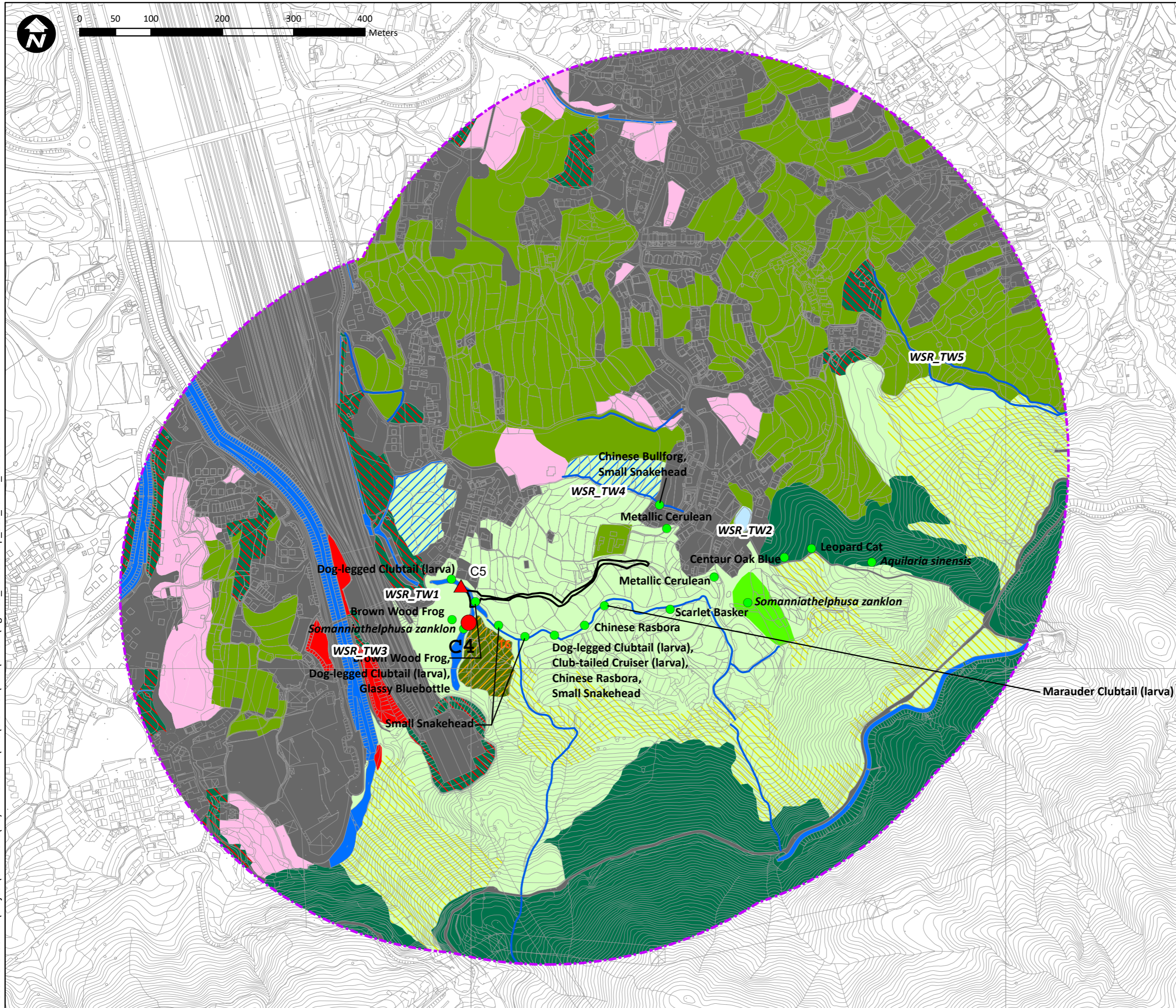
- Agricultural Land
- Pond
- Watercourse
- Grassland
- Grassland/Shrubland
- Secondary Woodland
- Plantation
- Waste Ground
- Urban/Residential Area

ATKINS

Project Title:
**Agreement No. CE 22/2013 (DS)
 Drainage Improvement Works in Yuen Long, Stage 1
 Investigation, Design and Construction**

Figure Title:
**Water Quality Monitoring Location
 At Sung Shan New Village**

Drawn by: ST	Scale: 1:4,986 on A3
Checked By: EL	Date: Sep 2019
Approved by: YX	
Figure Number: Figure 6.5	Revision: 2



- Monitoring Locations**
- Control
 - ▲ Impact
 - Species of Conservation Concern
 - 500m Study Area
 - Work Limit Boundary
 - Agricultural Land
 - Pond
 - Marsh
 - Mitigation Wetland
 - Watercourse
 - Seasonally Wet Grassland
 - Grassland
 - Grassland/Shrubland
 - Secondary Woodland
 - Orchard
 - Plantation
 - Waste Ground
 - Urban/Residential Area

ATKINS

Project Title:
Agreement No. CE 22/2013 (DS)
Drainage Improvement Works in Yuen Long, Stage 1
Investigation, Design and Construction

Figure Title:
Water Quality Monitoring Location
At Tai Wo

Drawn by:	ST	Scale:	1:4,995 on A3
Checked By:	EL	Date:	Sep 2019
Approved by:	JC		
Figure Number:	Figure 6.6		Revision: 2



Monitoring Location

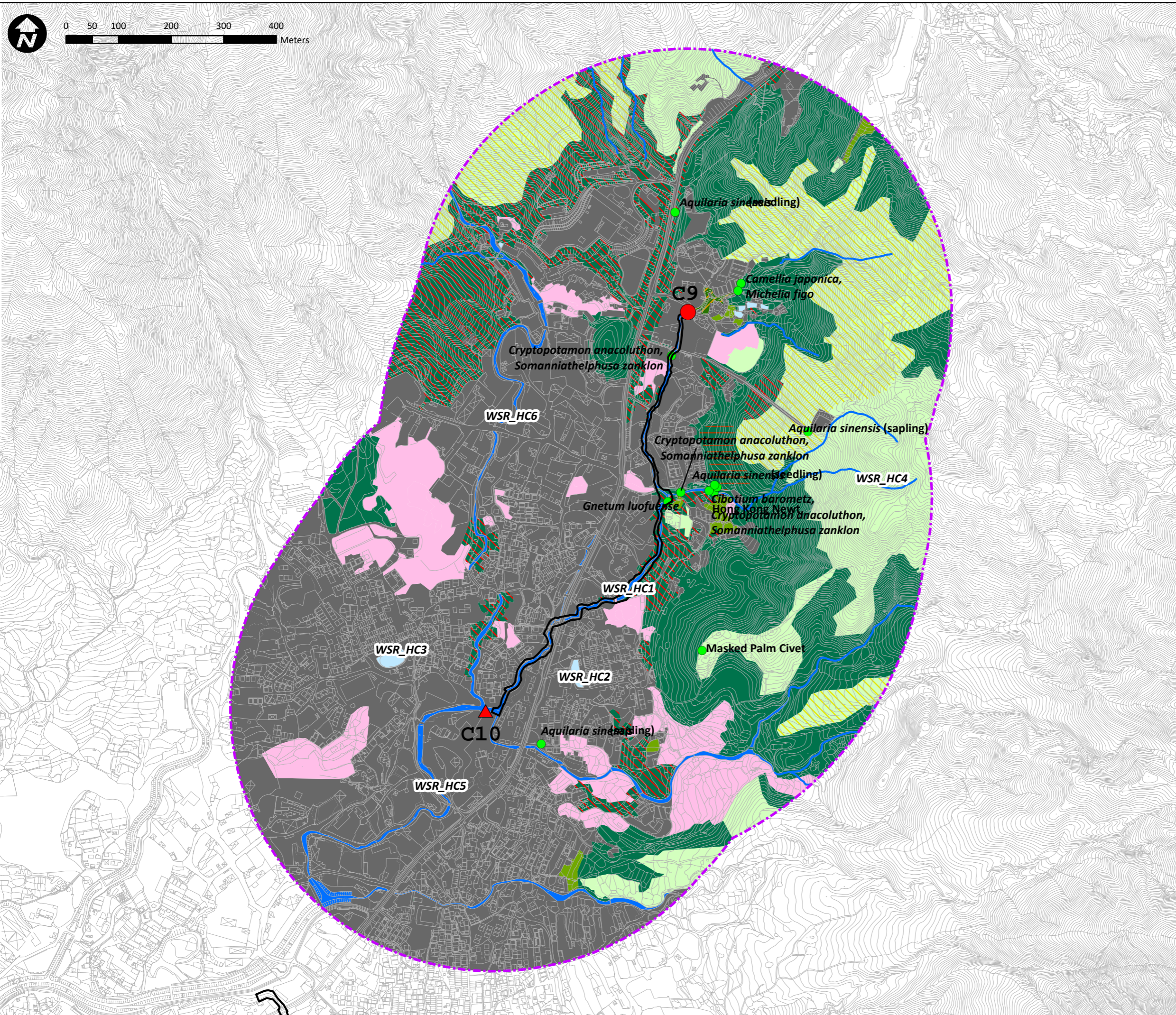
- Control
- ▲ Impact
- Species of Conservation Concern
- Work Limit Boundary
- 500m Study Area
- Agricultural Land
- Pond
- Marsh
- Watercourse
- Seasonally Wet Grassland
- Grassland
- Secondary Woodland
- Orchard
- Plantation
- Waste Ground
- Urban/Residential Area

ATKINS

Project Title:
Agreement No. CE 22/2013 (DS)
Drainage Improvement Works in Yuen Long, Stage 1
Investigation, Design and Construction

Figure Title:
Water Quality Monitoring Location
At Lin Fa Tei

Drawn by:	ST	Scale:	1:6,600 on A3
Checked By:	EL	Date:	Oct 2018
Approved by:	YX		
Figure Number:	Figure 6.7		Revision: 1



- Monitoring Locations**
- Control
 - ▲ Impact
 - Species of Conservation Concern
 - 500m Study Area
 - Work Limit Boundary
 - Agricultural Land
 - Pond
 - Watercourse
 - Grassland
 - Grassland/Shrubland
 - Secondary Woodland
 - Fung Shui Wood
 - Orchard
 - Plantation
 - Waste Ground
 - Urban/Residential Area

ATKINS

Project Title:
Agreement No. CE 22/2013 (DS)
Drainage Improvement Works in Yuen Long, Stage 1
Investigation, Design and Construction

Figure Title:
Water Quality Monitoring Location
At Ha Che

Drawn by:	ST	Scale:	1:6,820 on A3
Checked By:	EL	Date:	Oct 2018
Approved by:	YX		
Figure Number:	Figure 6.8		Revision: 1