

REVIEW OF AERIAL PHOTO

General

The review mainly focusses on the proposed location of the Barrage and YLN where sediment removal works would be conducted.

As parapet wall modifications at Kam Tin River is relatively minor, no land contamination is anticipated.



Fig No. 6.3_1: Year 1963 Aerial Photograph

The proposed Barrage was located at a river near the confluence of Kam Tin River and Shan Pui River. The surrounding was mainly cultivation land. The YLN had not been constructed yet.

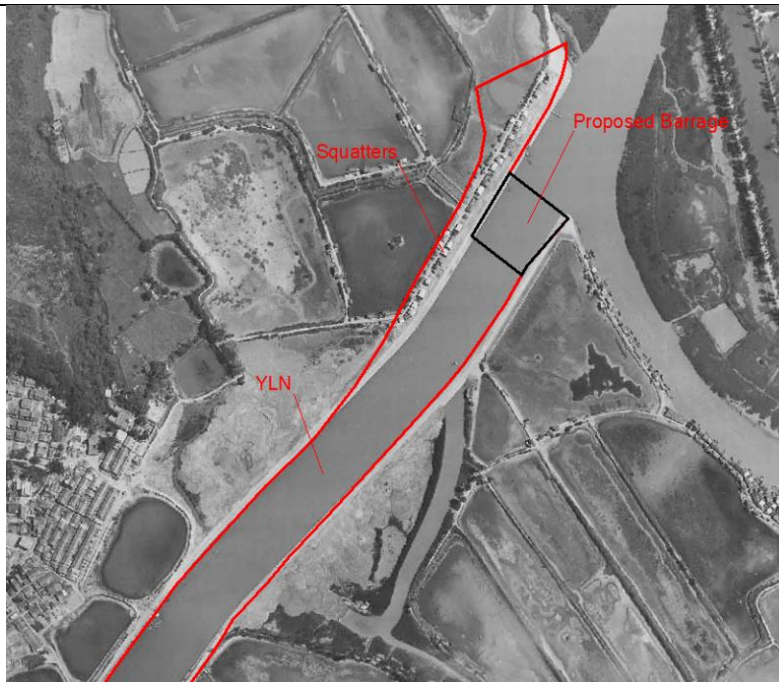


Fig No. 6.3_2: Year 1967 Aerial Photograph

The width of the river had been enlarged and the flow path of the river had been straightened. The YLN had been constructed. Some squatters were observed along the riverbank.



Fig No. 6.3_3: Year 1972 Aerial Photograph
Part of the river bed are observed, possibly related to low water level.

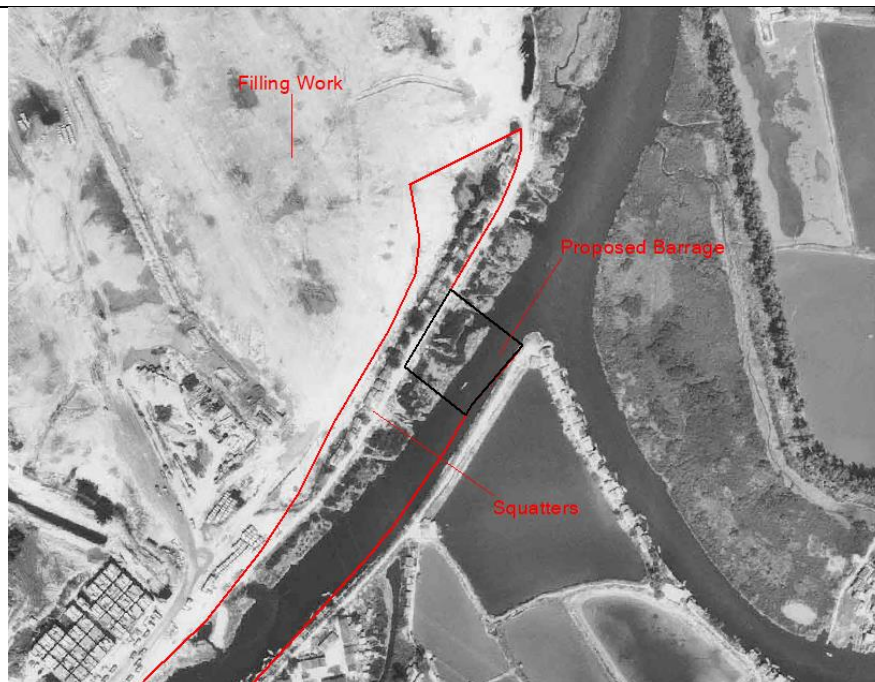


Fig No. 6.3_4: Year 1981 Aerial Photograph
The cultivation land located in the north-west direction of the site was removed and filling work are observed. The squatters were still occupying the riverbank.



Fig No. 6.3_5: Year 1987 Aerial Photograph

The land located in the north-west direction of the site was covered with medium dense vegetation. An area of vegetation clearance was observed in there, possibly related to site formation work.

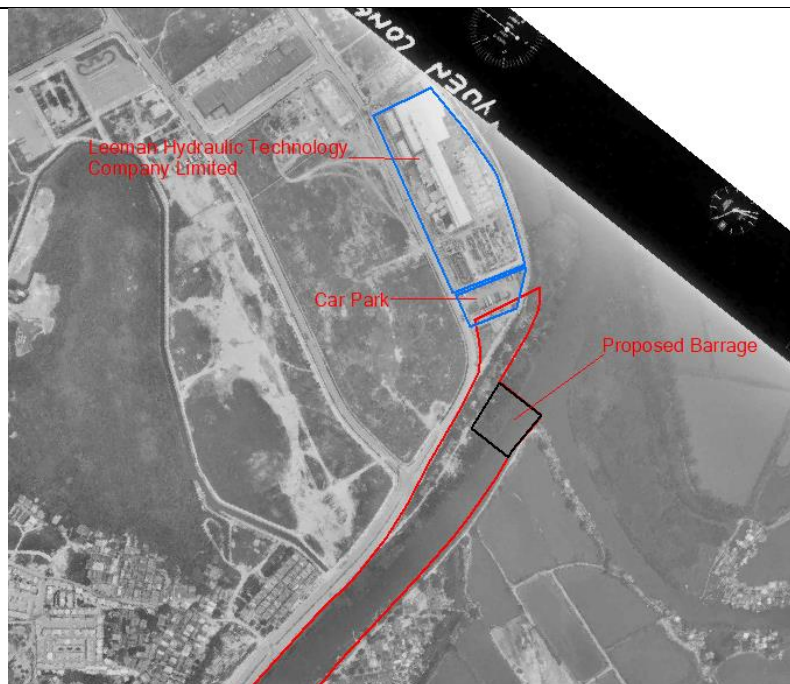


Fig No. 6.3_6: Year 1990 Aerial Photograph

A car park and the Leeman Hydraulic Technology Company Limited were constructed in the north-west direction of the site.

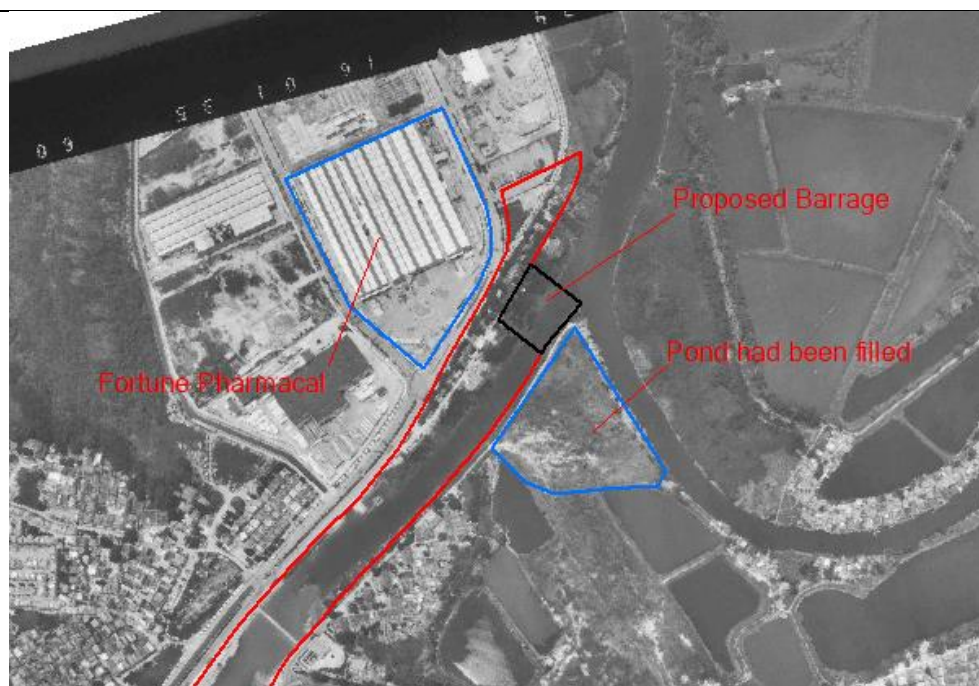


Fig No. 6.3_7: Year 1993 Aerial Photograph

The Fortune Pharmacal was constructed in the east site direction of the site. The pond in the south-east of the site was filled and the covered by medium dense vegetation.

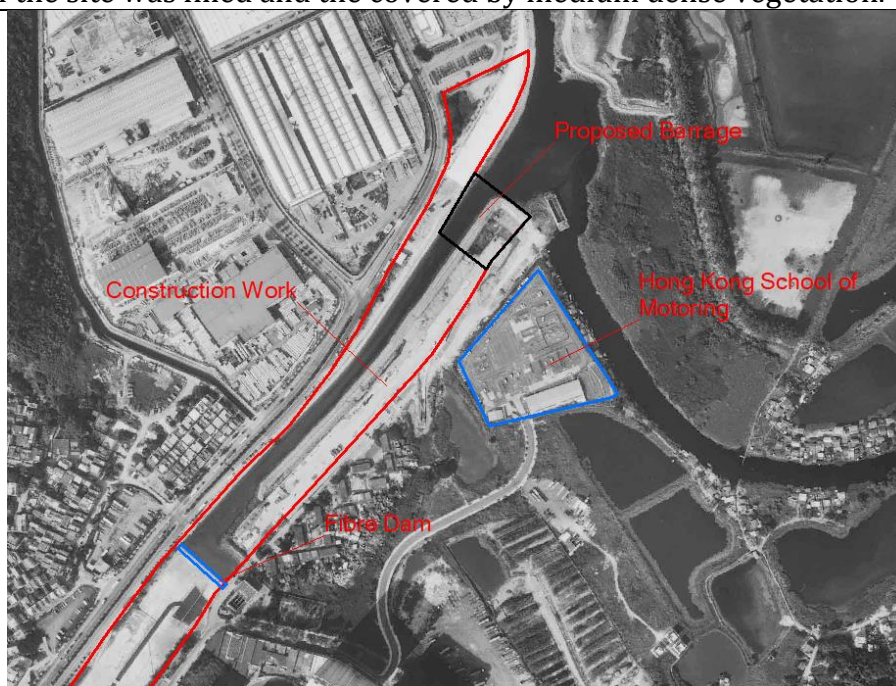


Fig No. 6.3_8: Year 1996 Aerial Photograph

Construction works are observed along the riverbank and a fibre dam was constructed upstream, not far away from the proposed location of the Barrage. The Hong Kong School of Motoring was constructed in the east direction of the site.

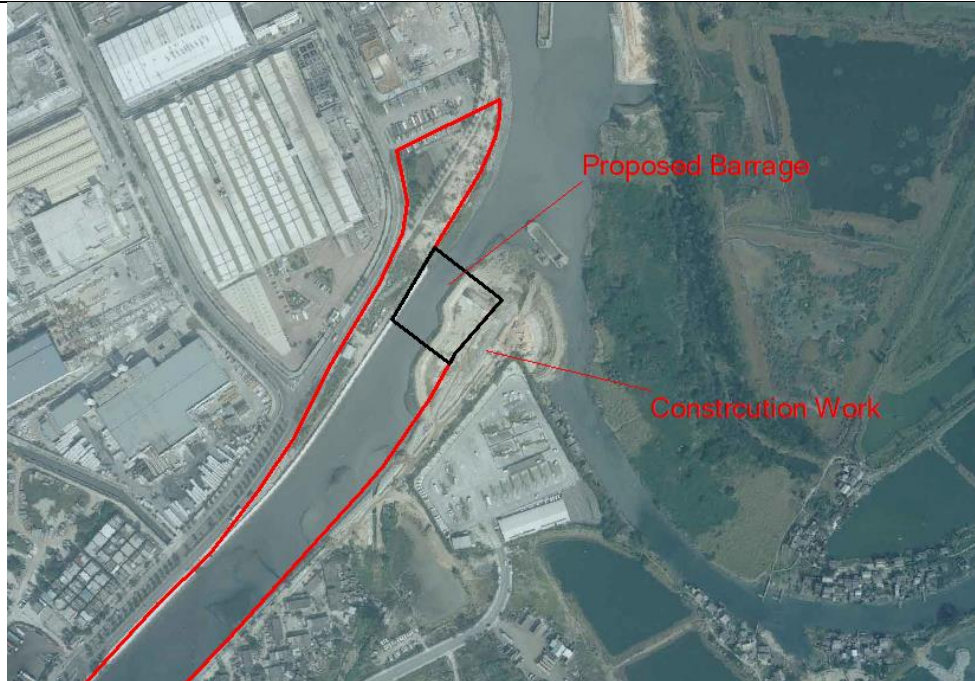


Fig No. 6.3_9: Year 1999 Aerial Photograph

The construction work observed in previous year was still in process.

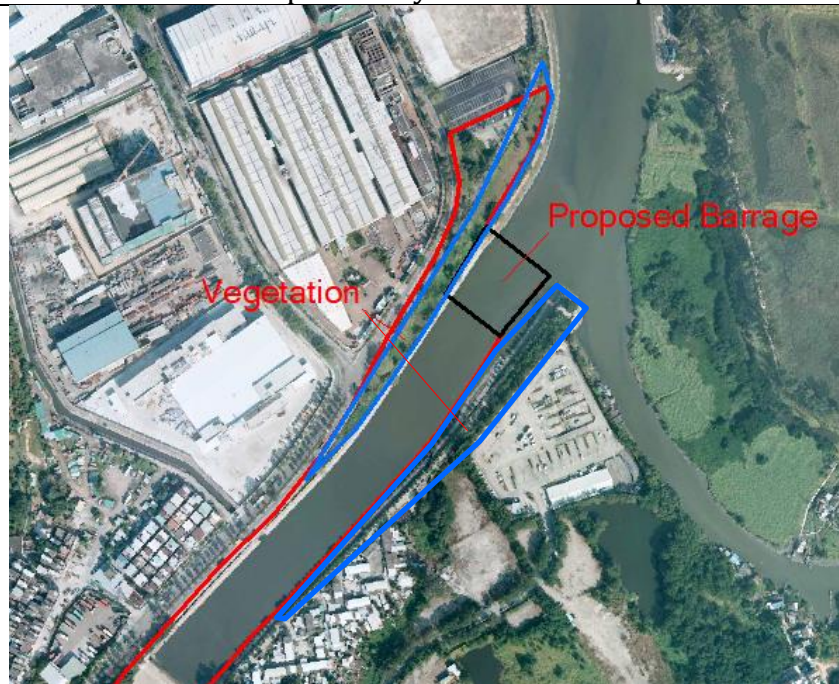


Fig No. 6.3_10: Year 2018 Aerial Photograph

The land along the sides of the riverbank were covered by light dense vegetation.



Fig No. 6.3_11: Year 1963 Aerial Photograph

The site for the proposed modifications was cultivation land at that time. The YLN and YLBF had not been constructed yet.

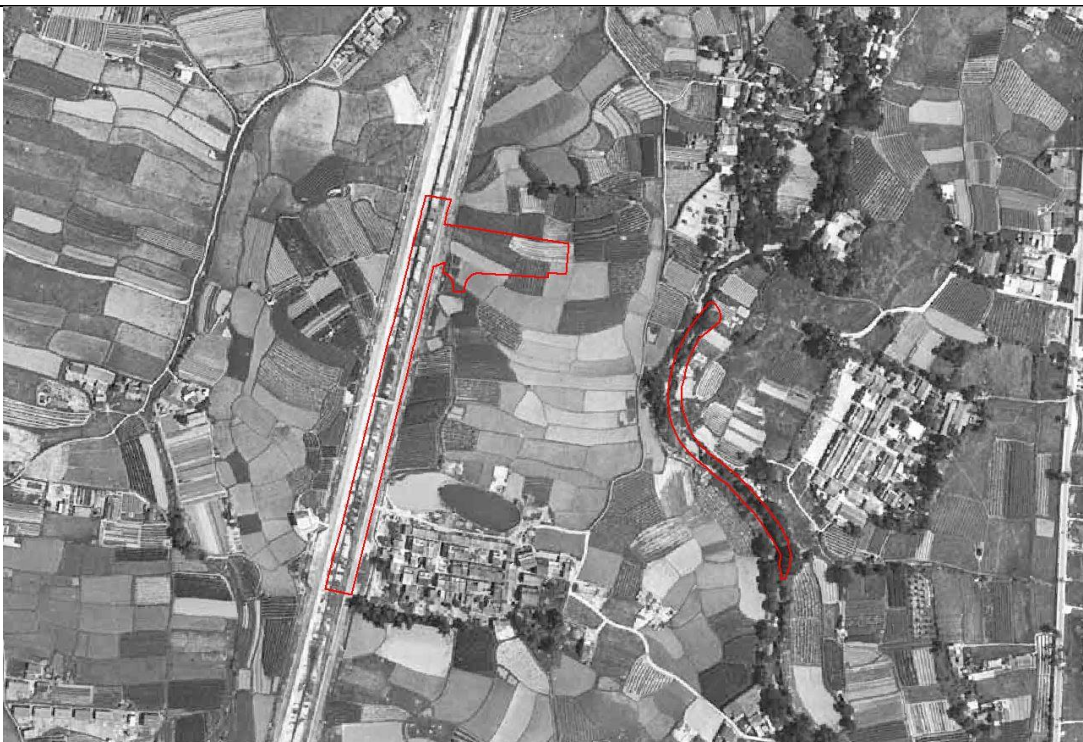


Fig No. 6.3_12: Year 1967 Aerial Photograph

The cultivation land had been converted into a nullah and has formed an integral part of YLN.



Fig No. 6.3_13: Year 1972 Aerial Photograph

No significant changes are observed.



Fig No. 6.3_14: Year 1981 Aerial Photograph

No significant changes are observed.

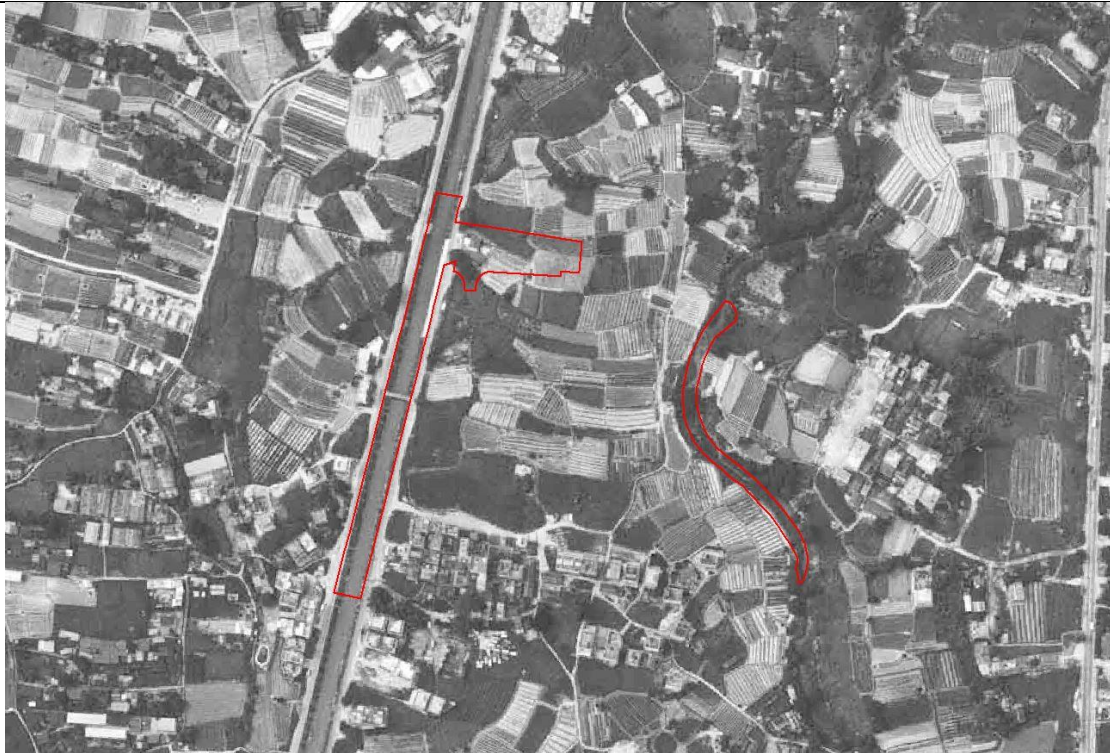


Fig No. 6.3_15: Year 1987 Aerial Photograph

No significant changes are observed.

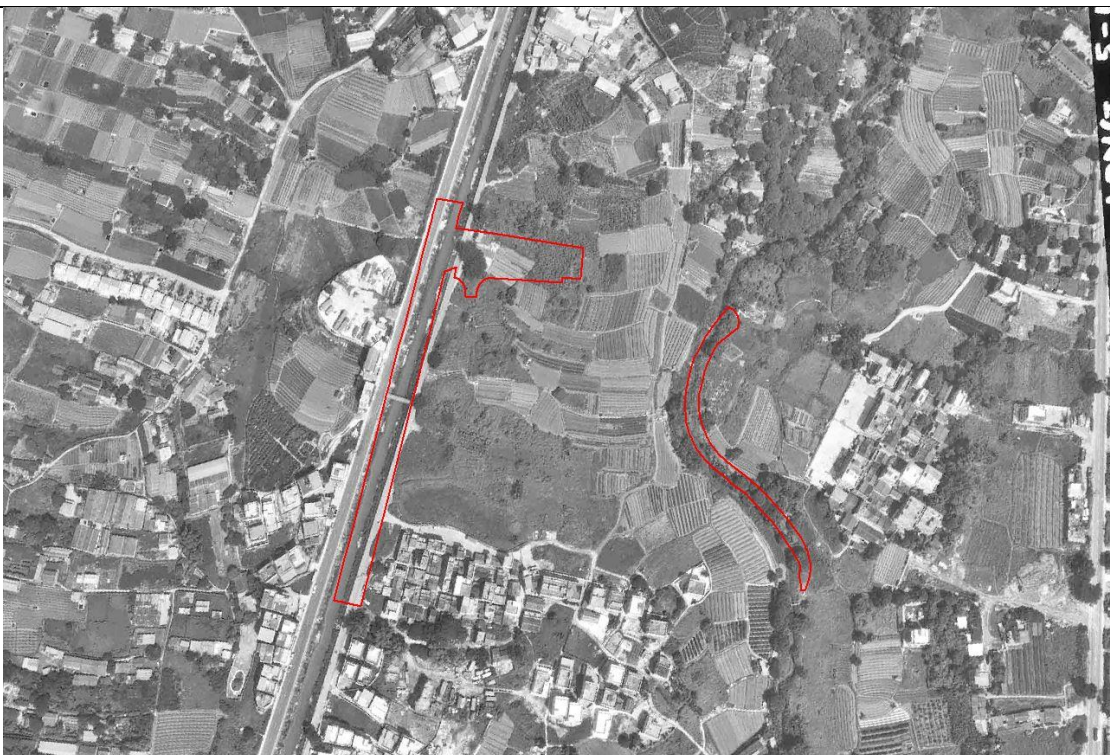


Fig No. 6.3_16: Year 1990 Aerial Photograph

A small area of cultivation land which located in the west direction of the site was converted into Open Storage.



Fig No. 6.3_17: Year 1993 Aerial Photograph

Construction of the Yuen Long Highway had been started in north-east direction of the Site.

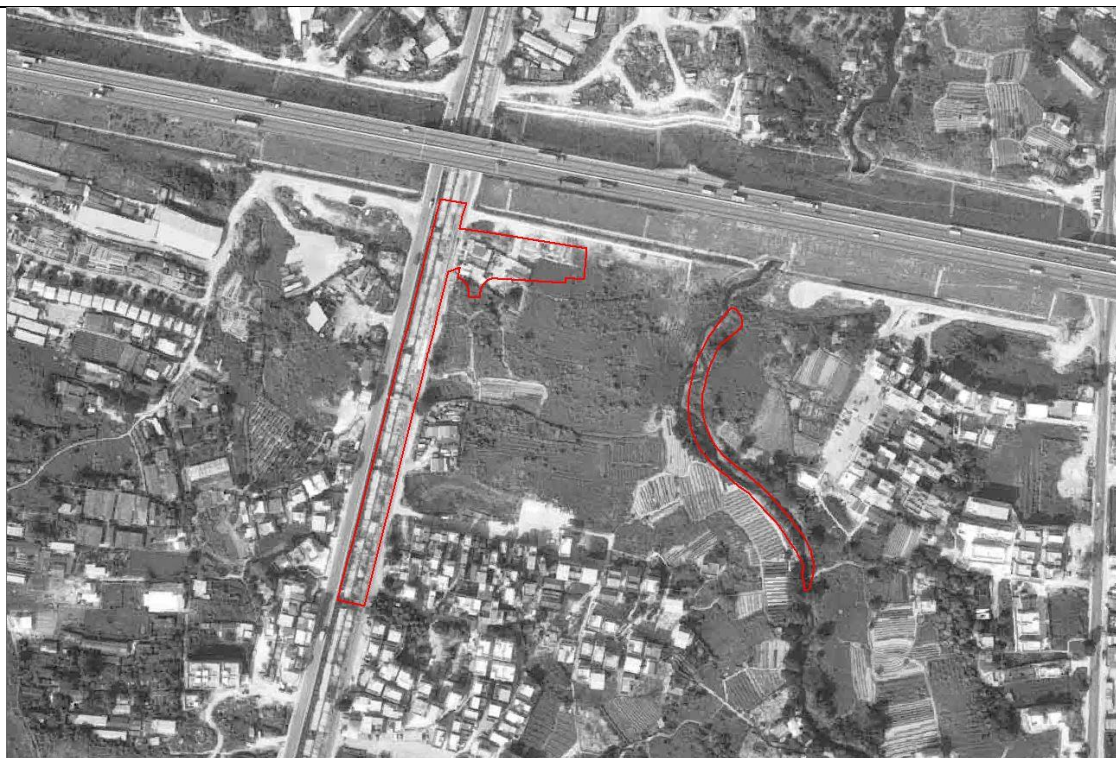


Fig No. 6.3_18: Year 1996 Aerial Photograph

The construction of Yuen Long Highway had been finished. Some buildings were constructed in the east direction of the site.



Fig No. 6.3_19: Year 1999 Aerial Photograph

No significant changes are observed.



Fig No. 6.3_20: Year 2018 Aerial Photograph

No significant changes are observed.