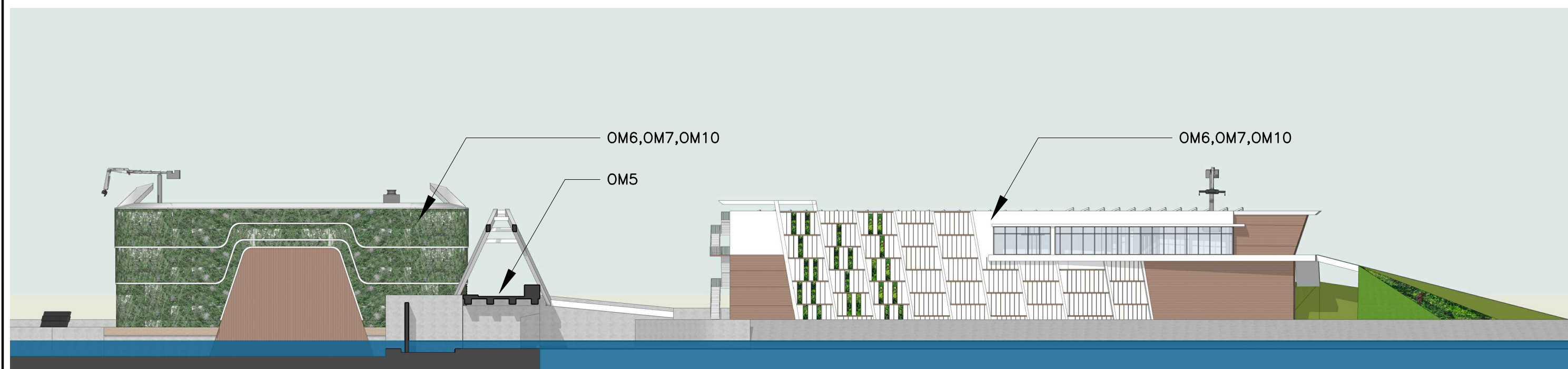



| ID No. | Landscape and Visual Mitigation Measures During Construction Stage                                                                                                                                                                                                                                                                                                                                                       |
|--------|--------------------------------------------------------------------------------------------------------------------------------------------------------------------------------------------------------------------------------------------------------------------------------------------------------------------------------------------------------------------------------------------------------------------------|
| CM1    | The construction area and contractor's temporary works areas should be minimised to reduce visual impacts and avoid impacts on adjacent landscape.                                                                                                                                                                                                                                                                       |
| CM2    | Reduction of construction period to practical minimum.                                                                                                                                                                                                                                                                                                                                                                   |
| CM3    | Phasing of the construction stage to reduce visual impacts during the construction phase.                                                                                                                                                                                                                                                                                                                                |
| CM4    | Construction traffic kept to a practical minimum.                                                                                                                                                                                                                                                                                                                                                                        |
| CM5    | Erection of decorative mesh screens or construction hoardings around works areas in visually unobtrusive colours.                                                                                                                                                                                                                                                                                                        |
| CM6    | Avoidance of excessive height and bulk of site buildings and structures.                                                                                                                                                                                                                                                                                                                                                 |
| CM7    | Control of night-time lighting by hooding all lights and through minimisation of night working periods.                                                                                                                                                                                                                                                                                                                  |
| CM8    | All existing trees shall be carefully protected during construction. Detailed Tree Protection Specification shall be provided in the Contract Documents. Under this specification, the Contractor shall be required to submit, for approval, a detailed working method statement for the protection of trees prior to undertaking any works adjacent to all retained trees, including trees in contractor's works areas. |
| CM9    | Trees unavoidably affected by the works shall be transplanted where practical. A detailed Tree Transplanting Specification shall be provided in the Contract Specification, if applicable. Sufficient time for necessary tree root and crown preparation periods shall be allowed in the project programme.                                                                                                              |

| ID No. | Landscaping and Visual Mitigation Measure During Operation Stage                                                                                                                                                                                                                                                                                           |
|--------|------------------------------------------------------------------------------------------------------------------------------------------------------------------------------------------------------------------------------------------------------------------------------------------------------------------------------------------------------------|
| OM1    | Enhanced nullah bed with replacement of concrete lining with natural substrates and planting.                                                                                                                                                                                                                                                              |
| OM2    | Enhanced nullah sides with appropriate hard and soft finishes and parapet treatments.                                                                                                                                                                                                                                                                      |
| OM3    | Enhanced adjacent streetscape with paving, planting and furniture in a manner that responds to the existing and planned urban context.                                                                                                                                                                                                                     |
| OM4    | Additional viewpoints, seating areas and open space within or adjacent to nullah.                                                                                                                                                                                                                                                                          |
| OM5    | Enhanced nullah crossings including vehicular, pedestrian and utility bridges with upgraded finishes and treatments.                                                                                                                                                                                                                                       |
| OM6    | Sensitively designed barrage and structures in terms of scale, height and bulk (visual weight).                                                                                                                                                                                                                                                            |
| OM7    | Barrage and drainage works visually integrated with their surroundings through use of appropriate building materials and finishes.                                                                                                                                                                                                                         |
| OM8    | Barrage lighting units to be directional and minimise unnecessary light spill and glare.                                                                                                                                                                                                                                                                   |
| OM9    | Compensatory tree planting for all felled trees in accordance with relevant Government tree protection requirements. (Required numbers and locations of compensatory trees shall be determined and agreed separately with Government during the Tree Felling Application process under the relevant technical circulars during the detailed design phase). |
| OM10   | Green roofs and vertical greening on barrage pumping stations and E&M control building.                                                                                                                                                                                                                                                                    |



SCALE 1 : 500



|               |      |             |  |  |  |              |            |             |          |                                                                                                  |            |    |             |            |      |          |          |                                                                                                                                                                                                                                                                           |
|---------------|------|-------------|--|--|--|--------------|------------|-------------|----------|--------------------------------------------------------------------------------------------------|------------|----|-------------|------------|------|----------|----------|---------------------------------------------------------------------------------------------------------------------------------------------------------------------------------------------------------------------------------------------------------------------------|
|               |      |             |  |  |  | Job Title    |            |             |          | AGREEMENT NO. CE 93/2017 (DS), YUEN LONG BARRAGE SCHEME - INVESTIGATION, DESIGN AND CONSTRUCTION |            |    |             | Figure No. |      | 10.61B   |          | <br>Planning, Urban Design, Landscape, Golf & Environmental Consultant<br>Urbis Limited, 11/F Siu On Centre, 188 Lockhart Road, Wan Chai, Hong Kong. Tel : 2802 3333 Fax : 2802 8666 |
|               |      |             |  |  |  | Figure Title |            |             |          | BARRAGE MITIGATION - ELEVATION A - NORTHWEST                                                     |            |    |             | Scale      |      | 1:500    |          |                                                                                                                                                                                                                                                                           |
|               |      |             |  |  |  |              |            |             |          |                                                                                                  |            |    |             |            |      |          |          |                                                                                                                                                                                                                                                                           |
|               |      |             |  |  |  |              |            |             |          |                                                                                                  |            |    |             |            |      |          |          |                                                                                                                                                                                                                                                                           |
|               |      |             |  |  |  |              |            |             |          |                                                                                                  |            |    |             |            |      |          |          |                                                                                                                                                                                                                                                                           |
| Amendment No. | Date | Description |  |  |  | Drawn by     | Checked by | Approved by | Drawn by | TW                                                                                               | Checked by | CM | Approved by | THT        | Date | SEP 2020 | Job. No. | BP18                                                                                                                                                                                                                                                                      |