

LEGEND:

- CATCHMENT AREA OF PROPOSED PUMPING STATION
- INDICATIVE LOCATION OF POSSIBLE SITE FOR PROPOSED SEWAGE PUMPING STATION
- PREFERRED AND OPTIMIZED LOCATION FOR PROPOSED SEWAGE PUMPING STATION
- G.L. 8.00** GROUND LEVEL

AECOM

PROJECT
項目

TOLO HARBOUR SEWERAGE OF UNSEWERED AREAS STAGE 2 - INVESTIGATION, DESIGN AND CONSTRUCTION

CLIENT
業主

渠務署
Drainage Services Department

CONSULTANT
顧問公司

AECOM Asia Company Ltd.
www.aecom.com

SUB-CONSULTANTS
分判工程師/公司

ISSUE/REVISION
修訂

NO.	DATE	DESCRIPTION	CHK.

STATUS
狀態

SCALE
比例尺

A1 1 : 6000

DIMENSION UNIT
量度單位

METRES

KEY PLAN
索引圖

PROJECT NO.
項目編號

60547289

CONTRACT NO.
合約編號

SHEET TITLE
圖紙名稱

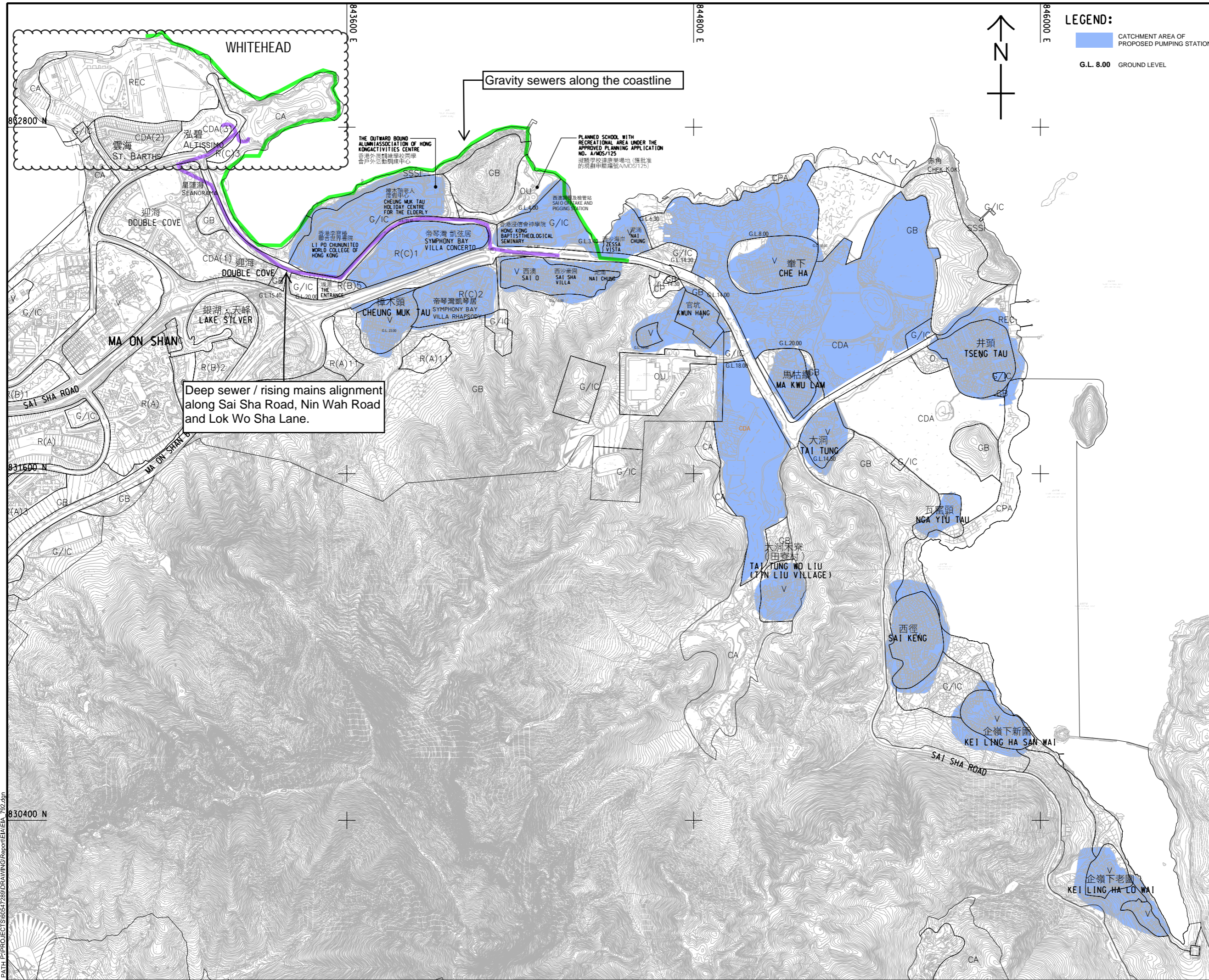
PROPOSED SAI O TRUNK SEWER SPS - SITE OPTIONS LOCATION PLAN

SHEET NUMBER
圖紙編號

60547289/EIA/APPENDIX 2.3A

This drawing has been prepared for the use of AECOM's client. It may not be used, modified, reproduced or relied upon by third parties, except as agreed by AECOM or as required by law. AECOM accepts no responsibility, and disclaims any liability, whatsoever, for any gain, loss or damage on this drawing without AECOM's express written consent. All measurements must be obtained from the stated dimensions.

ISO A1 594mm x 841mm
 Approved:
 Checked:
 Designer:
 Project Management Initials:



LEGEND:
 [Blue shaded area] CATCHMENT AREA OF PROPOSED PUMPING STATION
 G.L. 8.00 GROUND LEVEL

AECOM

PROJECT
 TOLO HARBOUR SEWERAGE OF UNSEWERED AREAS STAGE 2 - INVESTIGATION, DESIGN AND CONSTRUCTION
CLIENT

渠務署
 Drainage Services Department

CONSULTANT
 AECOM Asia Company Ltd.
 www.aecom.com

SUB-CONSULTANTS
 分列工程師有限公司

ISSUE/REVISION

NO.	DATE	DESCRIPTION	CHK.

STATUS
 10/12

SCALE
 A1 1 : 6000
DIMENSION UNIT
 METRES

KEY PLAN
 10/12

PROJECT NO.
 60547289
CONTRACT NO.

SHEET TITLE
 ALTERNATIVE SITE AT WHITEHEAD PUT FORWARD BY THE PUBLIC

SHEET NUMBER
 60547289/EIA/APPENDIX 2.3B

Plot File by: ZHUJUNZ
 2021/10/23
 PATH: P:\PROJECTS\60547289\DRAWING\Report\EIA\EA_792.dgn

This drawing has been prepared for the use of AECOM's client. It may not be used, modified, reproduced or relied upon by third parties, except as agreed by AECOM or as required by law. AECOM accepts no responsibility, and disclaims any liability, whatsoever, for any loss or damage, in any way, that results or arises from this drawing without AECOM's express written consent. All measurements must be obtained from the stated dimensions.