

Appendix 8.9 Representative Photos of Habitats and Species Recorded during Dive Surveys



Plate 1 Bedrock / Hard bottom habitat recorded in the previous survey



Plate 2 Muddy / silty bottom substrates and *Salmacis sphaeroides* at Site D1



Plate 3 Boulders with *Saccostrea cucullata* and *Colpomenia* sp. at shallow waters at Site D1





Plate 4 Muddy / silty bottom substrates and *Salmacis sphaeroides* at Site D2



Plate 5 Sandy bottom at Site D3



Plate 6 Muddy / silty bottom at Site D3

 渠務署 Drainage Services Department 	Environmental Impact Assessment for Sai O Trunk Sewer Sewage Pumping Station	SCALE	N.T.S	DATE	May-19	
	Representative Photos of Habitats and Species Recorded during Dive Surveys	CHECK	LAMCCG	DRAWN	MAKYLS	
		JOB NO.	60547289	Appendix No.		Rev.
				8.9	1	

Appendix 8.9 Representative Photos of Habitats and Species Recorded during Dive Surveys



Plate 7 Sea Squirt (*Styela plicata*)



Plate 8 Blue-spotted Sea Hare (*Bursatella leachii*)



Plate 9 Egg mass of *Bursatella leachii* on *Styela plicata*

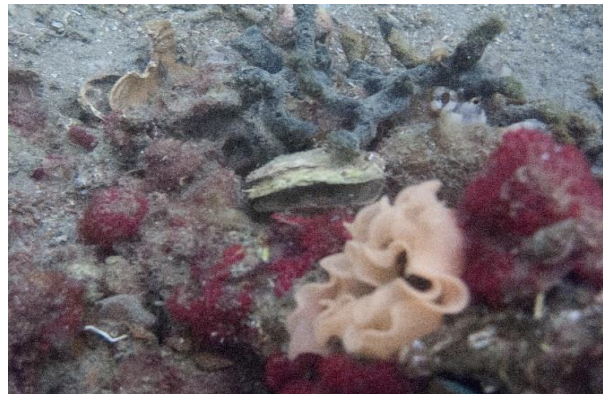




Plate 10 Demosponges and egg mass of *Opisthobranchia* sp.



Plate 11 *Salmacis sphaeroides*, *Styela plicata* and egg mass of *Opisthobranchia* sp.



Plate 12 *Octopus* sp. in an empty shell

 渠務署 Drainage Services Department 	Environmental Impact Assessment for Sai O Trunk Sewer Sewage Pumping Station	SCALE	N.T.S	DATE	May-19
		CHECK	LAMCCG	DRAWN	MAKYLS
	Representative Photos of Habitats and Species Recorded during Dive Surveys	JOB NO. 60547289	Appendix No.		Rev.
			8.9	1	