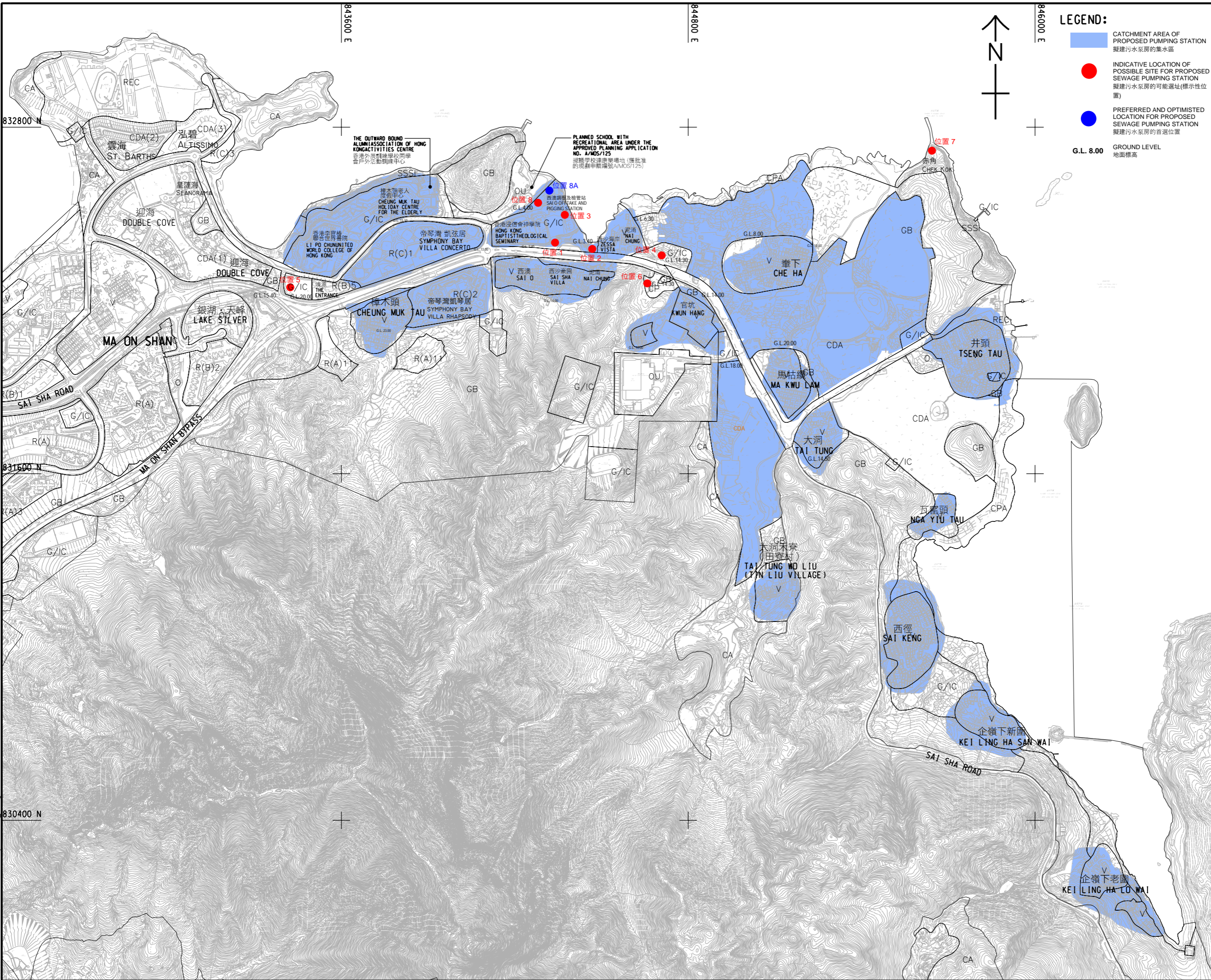


ISO A1 594mm x 841mm
 Approved:
 Checked:
 Designer:
 Project Management Initials:
 2021/10/23
 PATH P:\PROJECTS\60547289\DRAWING\Report\EA\EA_1792.dgn
 Plot File by: ZHUJUNZ



LEGEND:

- CATCHMENT AREA OF PROPOSED PUMPING STATION
擬建污水泵房的集水區
- INDICATIVE LOCATION OF POSSIBLE SITE FOR PROPOSED SEWAGE PUMPING STATION
擬建污水泵房的可能選址(標示性位置)
- PREFERRED AND OPTIMIZED LOCATION FOR PROPOSED SEWAGE PUMPING STATION
擬建污水泵房的首選位置
- G.L. 8.00
地面標高

AECOM

PROJECT
項目

TOLO HARBOUR SEWERAGE OF UNSEWERED AREAS STAGE 2 - INVESTIGATION, DESIGN AND CONSTRUCTION

CLIENT
業主

渠務署
Drainage Services Department

CONSULTANT
顧問公司

AECOM Asia Company Ltd.
www.aecom.com

SUB-CONSULTANTS
分判工程師/公司

ISSUE/REVISION
修訂

NO.	DATE	DESCRIPTION	CHK.

STATUS
狀態

SCALE
比例

A1 1 : 6000

DIMENSION UNIT
尺寸單位

METRES

KEY PLAN
索引圖

PROJECT NO.
項目編號

60547289

CONTRACT NO.
合約編號

SHEET TITLE
圖紙名稱

擬議西澳幹渠污水泵房 - 選址位置圖

SHEET NUMBER
圖紙編號

60547289/ES/附錄 2.1

This drawing has been prepared for the use of AECOM's client. It may not be used, modified, reproduced or relied upon by third parties, except as agreed by AECOM in writing. AECOM accepts no responsibility, and disclaims any liability, whatsoever, for any loss or damage, in any way, that results or arises from this drawing, without AECOM's express written consent. All measurements must be obtained from the stated dimensions.