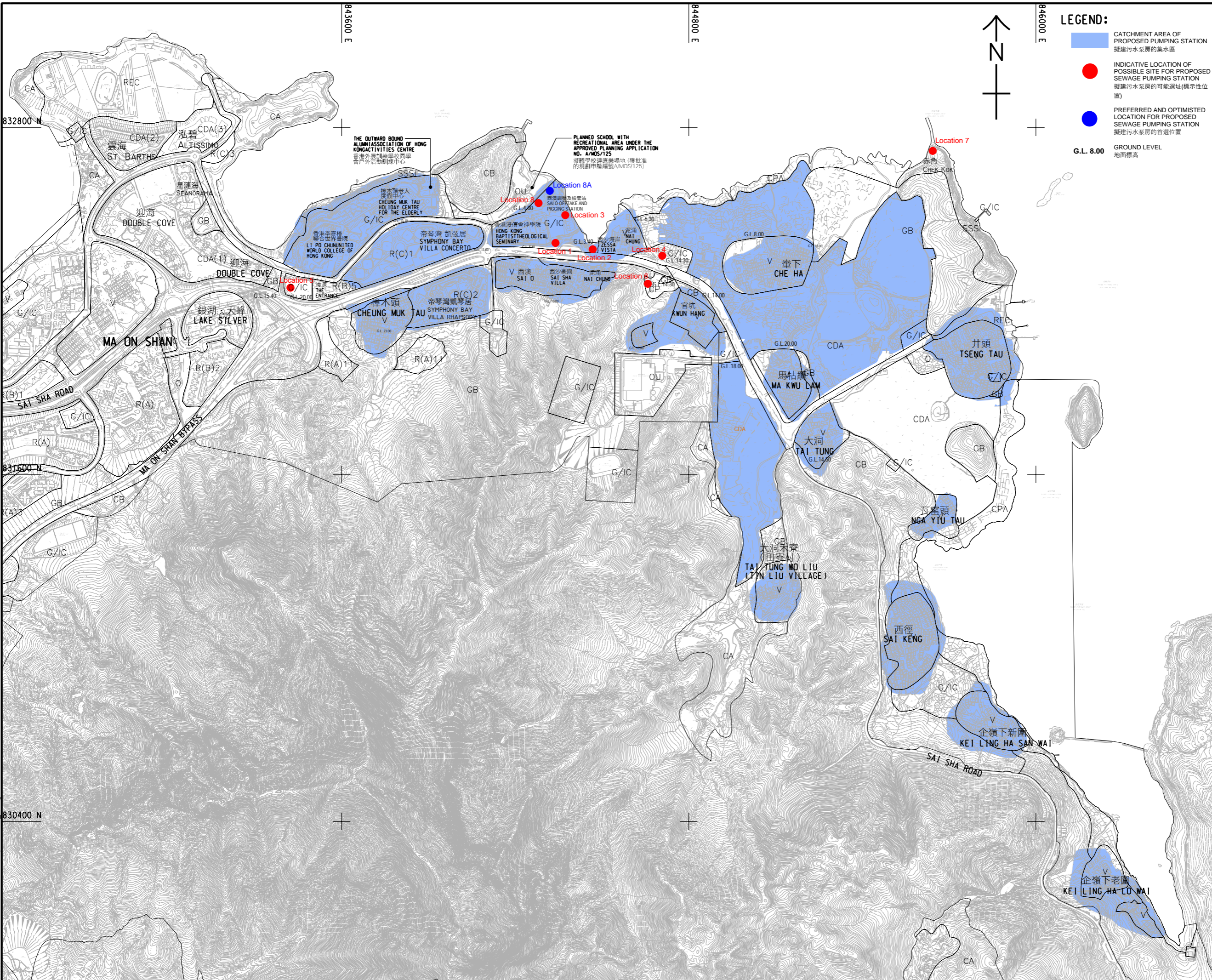


ISO A1 594mm x 841mm
 Approved:
 Checked:
 Designer:
 Project Management Initials:
 2021/10/23
 PATH P:\PROJECTS\60547289\DRAWING\Report\EA\EA_792.dgn



LEGEND:

- CATCHMENT AREA OF PROPOSED PUMPING STATION
擬建污水泵房的集水區
- INDICATIVE LOCATION OF POSSIBLE SITE FOR PROPOSED SEWAGE PUMPING STATION
擬建污水泵房的可能選址(標示性位置)
- PREFERRED AND OPTIMIZED LOCATION FOR PROPOSED SEWAGE PUMPING STATION
擬建污水泵房的首選位置
- G.L. 8.00** GROUND LEVEL
地面標高

AECOM

PROJECT
項目

TO LO HARBOUR SEWERAGE OF UNSEWERED AREAS STAGE 2 - INVESTIGATION, DESIGN AND CONSTRUCTION

CLIENT
業主

渠務署
Drainage Services Department

CONSULTANT
顧問公司

AECOM Asia Company Ltd.
www.aecom.com

SUB-CONSULTANTS
分判工程師/公司

ISSUE/REVISION
修訂

NO.	DATE	DESCRIPTION	CHK.

STATUS
狀態

SCALE
比例

DIMENSION UNIT
量度單位

A1 1 : 6000 METRES

KEY PLAN
索引圖

PROJECT NO.
項目編號

60547289

SHEET TITLE
圖紙名稱

PROPOSED SAI O TRUNK SEWER SPS - SITE OPTIONS LOCATION PLAN

SHEET NUMBER
圖紙編號

60547289/ES/APPENDIX 2.1

This drawing has been prepared for the use of AECOM's client. It may not be used, modified, reproduced or relied upon by third parties, except as agreed by AECOM or as required by law. AECOM accepts no responsibility, and disclaims any liability whatsoever, for any part, that uses or relies on this drawing without AECOM's express written consent. All measurements must be obtained from the stated dimensions.