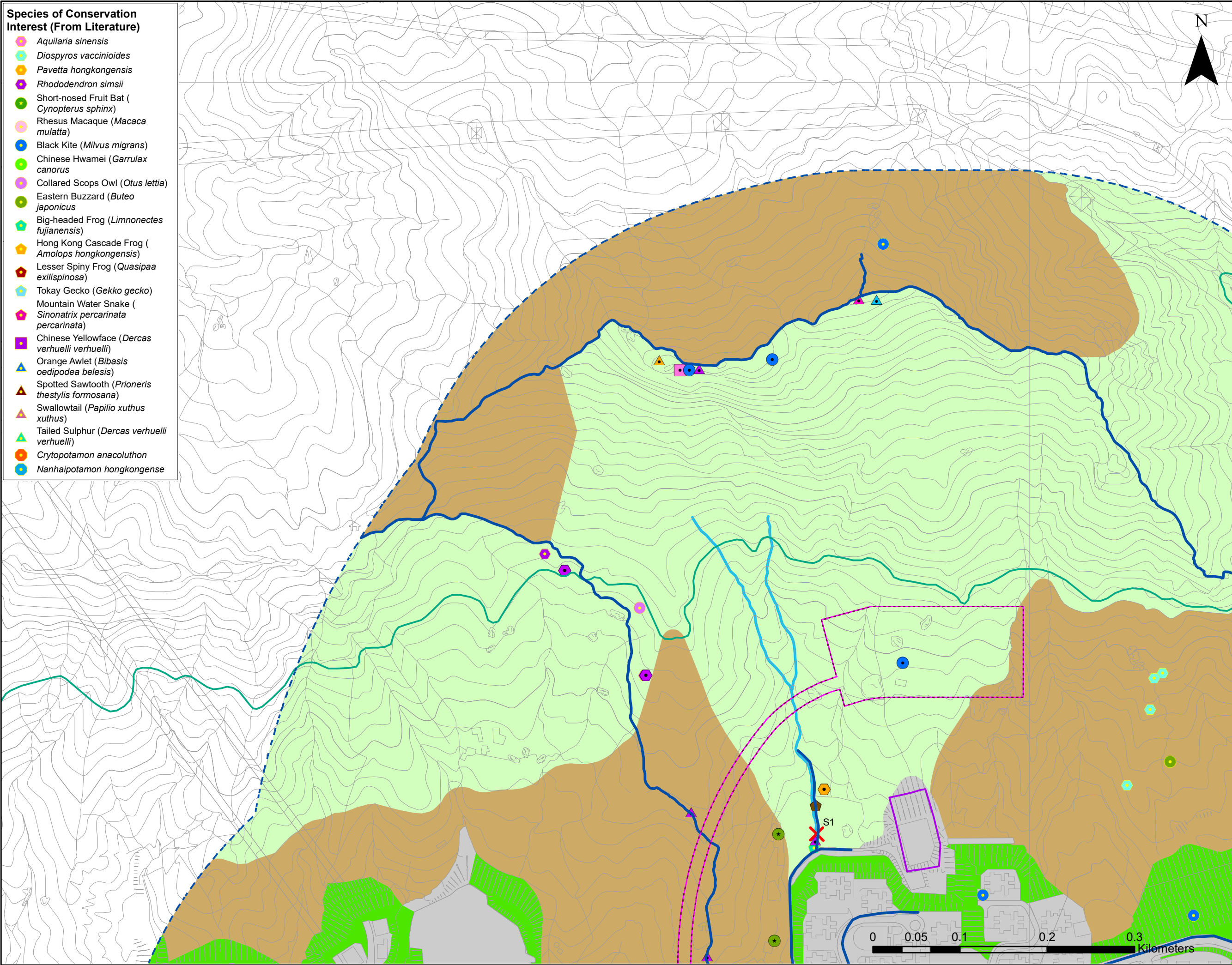


Species of Conservation Interest (From Literature)

- Aquilaria sinensis*
- Diospyros vaccinioides*
- Pavetta hongkongensis*
- Rhododendron simsii*
- Short-nosed Fruit Bat (*Cynopterus sphinx*)
- Rhesus Macaque (*Macaca mulatta*)
- Black Kite (*Milvus migrans*)
- Chinese Hwamei (*Garrulax canorus*)
- Collared Scops Owl (*Otus lettia*)
- Eastern Buzzard (*Buteo japonicus*)
- Big-headed Frog (*Limnonectes fujianensis*)
- Hong Kong Cascade Frog (*Amolops hongkongensis*)
- Lesser Spiny Frog (*Quasipaa exilispinosa*)
- Tokay Gecko (*Gekko gekko*)
- Mountain Water Snake (*Sinonatrix percarinata percarinata*)
- Chinese Yellowface (*Dercas verhuelli verhuelli*)
- Orange Awlet (*Bibasis oedipodea belesis*)
- Spotted Sawtooth (*Prioneris thestylis formosana*)
- Swallowtail (*Papilio xuthus xuthus*)
- Tailed Sulphur (*Dercas verhuelli verhuelli*)
- Cryptopotamon anacoluthon*
- Nanhaipotamon hongkongense*



- Legend**
- STUDY AREA (PREFERRED OPTION)
 - TUNNEL AND CAVERN (UNDERGROUND)
 - PROJECT SITE BOUNDARY
 - TRANSECT FOR ECOLOGICAL SURVEY
 - SAMPLING LOCATION FOR FRESHWATER AQUATIC ASSEMBLAGES SURVEY
 - COUNTRY PARK
 - EXISTING SERVICE RESERVOIR SITE
 - WATERCOURSE
 - SECONDARY WOODLAND
 - SHRUBLAND
 - PLANTATION
 - DEVELOPED AREA
 - Aquilaria sinensis*
 - Gnetum luofuense*
 - Pavetta hongkongensis*
 - Swallowtail (*Papilio xuthus xuthus*)
 - Baron (*Euthalia aconthea*)
 - Blackvein Sergeant (*Athyma ranga*)
 - Common Archduke (*Lexias pardalis*)
 - Yellow Rajah (*Charaxes marmax*)
 - Diospyros vaccinioides*
 - Rhododendron simsii*
 - Black Kite (*Milvus migrans*)
 - Crested Goshawk (*Accipiter trivirgatus*)
 - Eastern Buzzard (*Buteo japonicus*)
 - Emerald Cascader (*Zygonyx iris*)
 - Lesser Spiny Frog (*Quasipaa exilispinosa*)
 - Tokay Gecko (*Gekko gekko*)
 - Rhesus Macaque (*Macaca mulatta*)
 - Short-nosed Fruit Bat (*Cynopterus sphinx*)



Revision	Description			
	Designed	Reviewed	Drawn	Checked
Initial	Wing	ET	Wing	ET
Date	03/21	03/21	03/21	03/21

Approved: _____

Agreement No. **CE15/2018 (WS)**

Project Title
RELOCATION OF DIAMOND HILL FRESH WATER AND SALT WATER SERVICE RESERVOIRS TO CAVERNS - INVESTIGATION, DESIGN AND CONSTRUCTION

Figure Title
HABITAT MAP AND SPECIES OF CONSERVATION INTEREST (PREFERRED OPTION)

(Sheet 1 of 4)

Drawing No.	FIGURE 8.1a	Revision	2
Scale	A3: 1:4,000		

Client
 水務署
Water Supplies Department

Consultant
 binnies
BINNIES HONG KONG LIMITED
賓尼士工程顧問有限公司