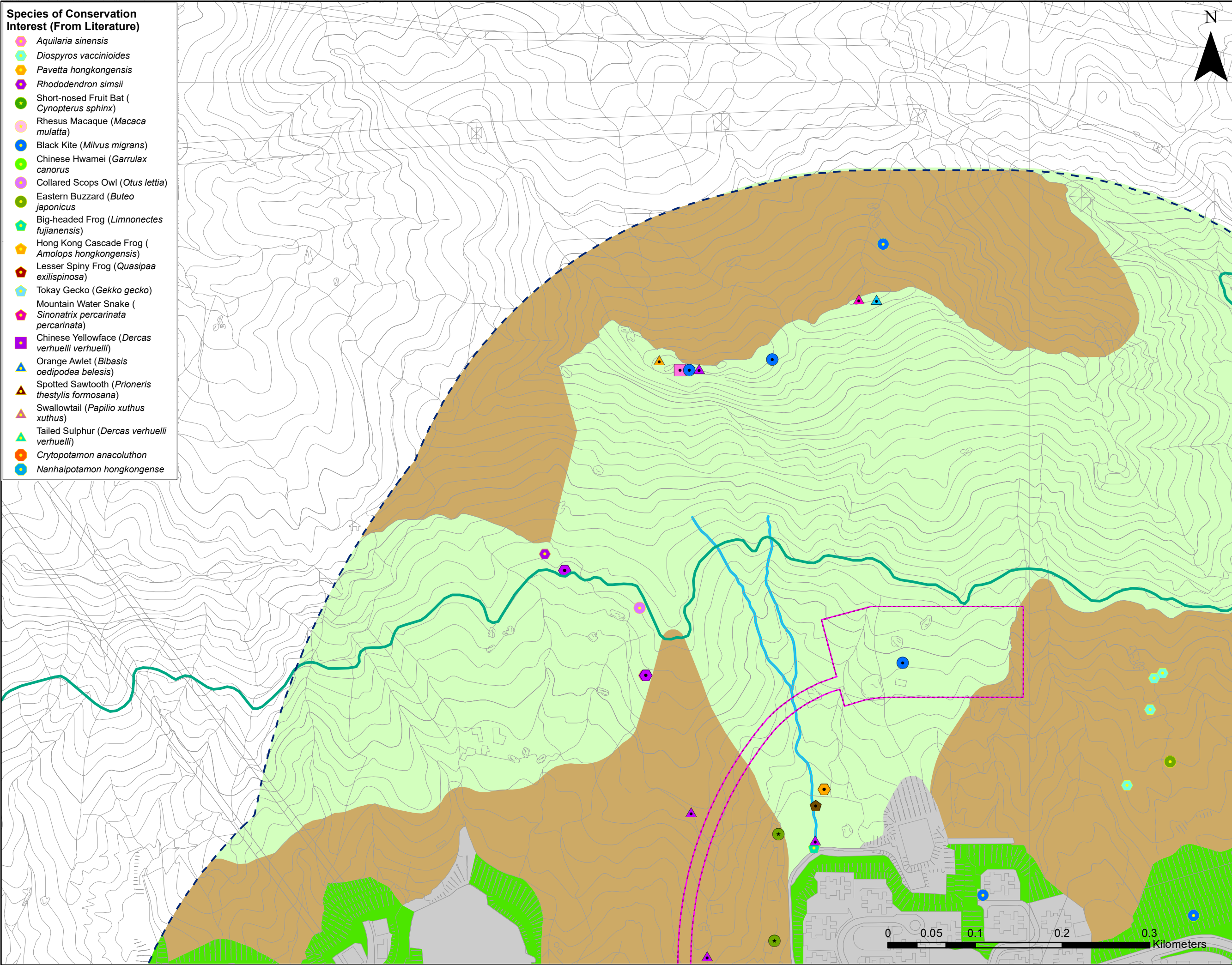


- Species of Conservation Interest (From Literature)**
- Aquilaria sinensis*
  - Diospyros vaccinioides*
  - Pavetta hongkongensis*
  - Rhododendron simsii*
  - Short-nosed Fruit Bat (*Cynopterus sphinx*)
  - Rhesus Macaque (*Macaca mulatta*)
  - Black Kite (*Milvus migrans*)
  - Chinese Hwamei (*Garrulax canorus*)
  - Collared Scops Owl (*Otus lettia*)
  - Eastern Buzzard (*Buteo japonicus*)
  - Big-headed Frog (*Limnonectes fujianensis*)
  - Hong Kong Cascade Frog (*Amolops hongkongensis*)
  - Lesser Spiny Frog (*Quasipaa exilispinosa*)
  - Tokay Gecko (*Gekko gekko*)
  - Mountain Water Snake (*Sinonatrix percarinata percarinata*)
  - Chinese Yellowface (*Dercas verhuelli verhuelli*)
  - Orange Awlet (*Bibasis oedipodea belesis*)
  - Spotted Sawtooth (*Prioneris thestylis formosana*)
  - Swallowtail (*Papilio xuthus xuthus*)
  - Tailed Sulphur (*Dercas verhuelli verhuelli*)
  - Cryptopotamon anacoluthon*
  - Nanhaipotamon hongkongense*

- Legend**
- PROJECT SITE BOUNDARY (UNDERGROUND)
  - PROJECT SITE BOUNDARY
  - STUDY AREA (PREFERRED OPTION)
  - PERMANENT HABITAT LOSS
  - TEMPORARY HABITAT LOSS
  - COUNTRY PARK
  - WATERCOURSE
  - SECONDARY WOODLAND
  - SHRUBLAND
  - PLANTATION
  - DEVELOPED AREA
  - Aquilaria sinensis*
  - Gnetum luofuense*
  - Pavetta hongkongensis*
  - Swallowtail (*Papilio xuthus xuthus*)
  - Baron (*Euthalia aconthea*)
  - Blackvein Sergeant (*Athyma ranga*)
  - Common Archduke (*Lexias pardalis*)
  - Yellow Rajah (*Charaxes marmax*)
  - Diospyros vaccinioides*
  - Rhododendron simsii*
  - Black Kite (*Milvus migrans*)
  - Crested Goshawk (*Accipiter trivirgatus*)
  - Eastern Buzzard (*Buteo japonicus*)
  - Emerald Cascader (*Zygonyx iris*)
  - Lesser Spiny Frog (*Quasipaa exilispinosa*)
  - Tokay Gecko (*Gekko gekko*)
  - Rhesus Macaque (*Macaca mulatta*)
  - Short-nosed Fruit Bat (*Cynopterus sphinx*)



Revision	Description			
	Designed	Reviewed	Drawn	Checked
Initial	Wing	ET	Wing	ET
Date	03/21	03/21	03/21	03/21

Approved: \_\_\_\_\_

Agreement No. **CE15/2018 (WS)**

Project Title  
**RELOCATION OF DIAMOND HILL FRESH WATER AND SALT WATER SERVICE RESERVOIRS TO CAVERNS**

Figure Title  
**HABITAT LOSS WITHIN PROJECT AREA**  
(Sheet 1 of 4)

Drawing No. **Figure 8.2a**      Revision **3**

Scale **A3: 1:4,000**

Client  
 **水務署 Water Supplies Department**

Consultant  
 **binnies**  
BINNIES HONG KONG LIMITED  
賓尼士工程顧問有限公司