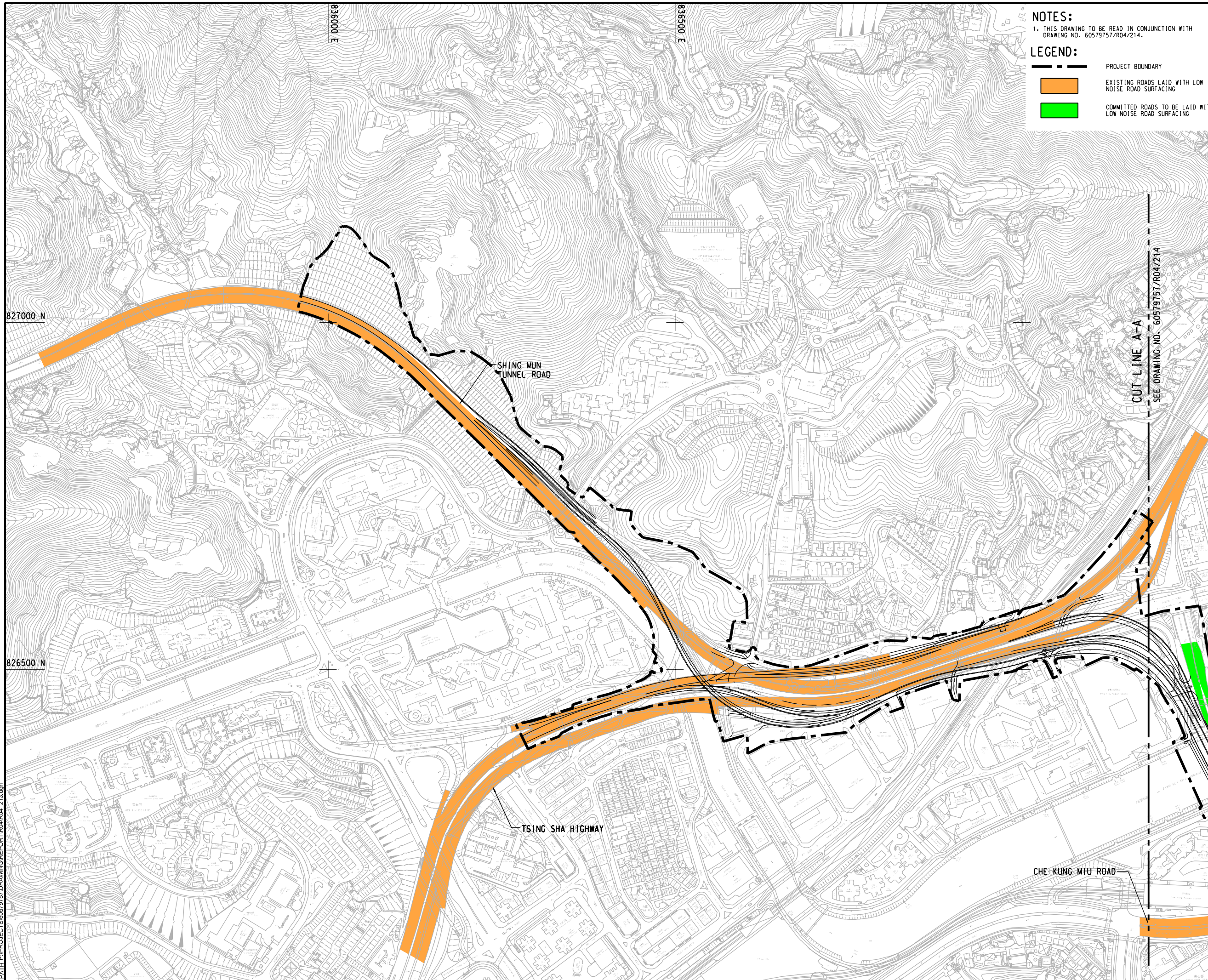


ISO A1 594mm x 841mm
 Approved:
 Checked:
 Designer:
 Project Management Initials:
 Plot File by: Yiling.CJ 2021/7/9
 PATH 120-PROJECTS\60579757\DRAWING\REPORT\RD4R04_213.dgn



NOTES:
 1. THIS DRAWING TO BE READ IN CONJUNCTION WITH DRAWING NO. 60579757/R04/214.

LEGEND:

- PROJECT BOUNDARY
- EXISTING ROADS LAID WITH LOW NOISE ROAD SURFACING
- COMMITTED ROADS TO BE LAID WITH LOW NOISE ROAD SURFACING



PROJECT
 項目
**REVISED TRUNK ROAD
 T4 IN SHA TIN**

CLIENT
 業主
土木工程拓展署
 Civil Engineering and
 Development Department

CONSULTANT
 顧問公司
 AECOM Asia Company Ltd.
 www.aecom.com

SUB-CONSULTANTS
 分判工程師/顧問公司

ISSUE/REVISION
 修訂

NO.	DATE	DESCRIPTION	CHK.

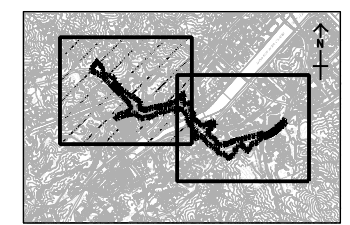
I/R
 修訂日期 內容描述 核對

STATUS
 階段

SCALE
 比例
 A3 1 : 5000

DIMENSION UNIT
 尺寸單位
 METRES

KEY PLAN A3 1 : 10000
 索引圖



PROJECT NO.
 項目編號
 60579757

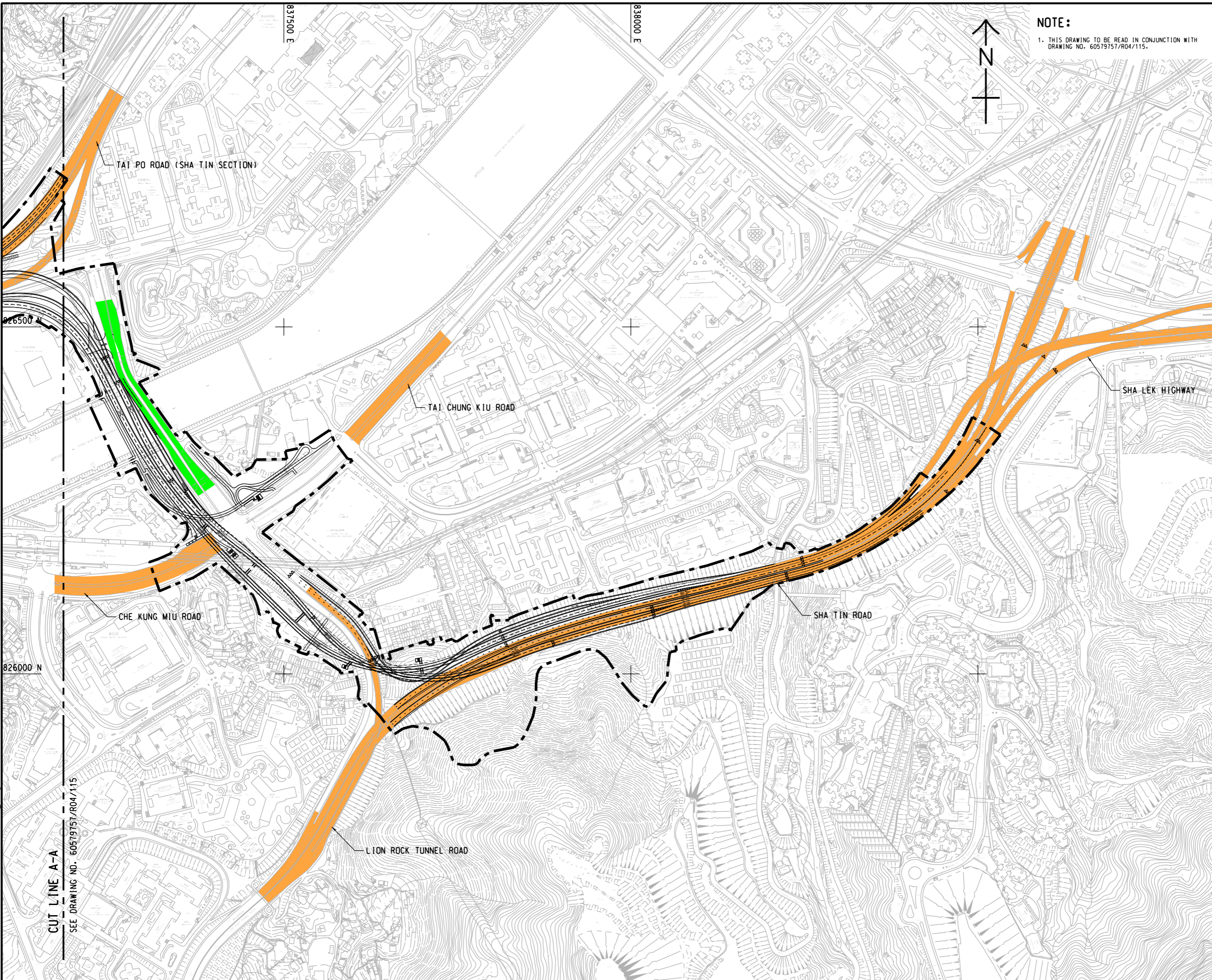
AGREEMENT NO.
 協議編號
 CE8/2018 (HY)

SHEET TITLE
 圖紙名稱
 EXTENT OF LOW NOISE ROAD SURFACING ON EXISTING ROADS WITHIN STUDY AREA

SHEET NUMBER
 圖紙編號
 60579757/R04/213

SHEET 1 OF 2

This drawing has been prepared for the use of AECOM's client. It may not be used, modified, reproduced or relied upon by third parties, except as agreed by AECOM or as required by law. AECOM accepts no responsibility, and makes no warranty, whatsoever, to any party, that uses or relies on this drawing without AECOM's express written consent. Do not scale this document. All measurements must be obtained from the paper dimensions.



NOTE:

1. THIS DRAWING TO BE READ IN CONJUNCTION WITH DRAWING NO. 60579757/R04/115.



ISSUE/REVISION

IR	DATE	DESCRIPTION	CHK.
修訂	日期	內容描述	校核

STATUS

預設

SCALE

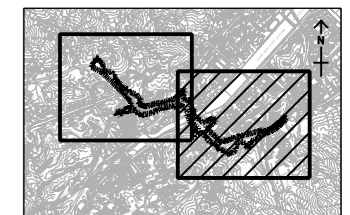
A3 1 : 5000

DIMENSION UNIT

METRES

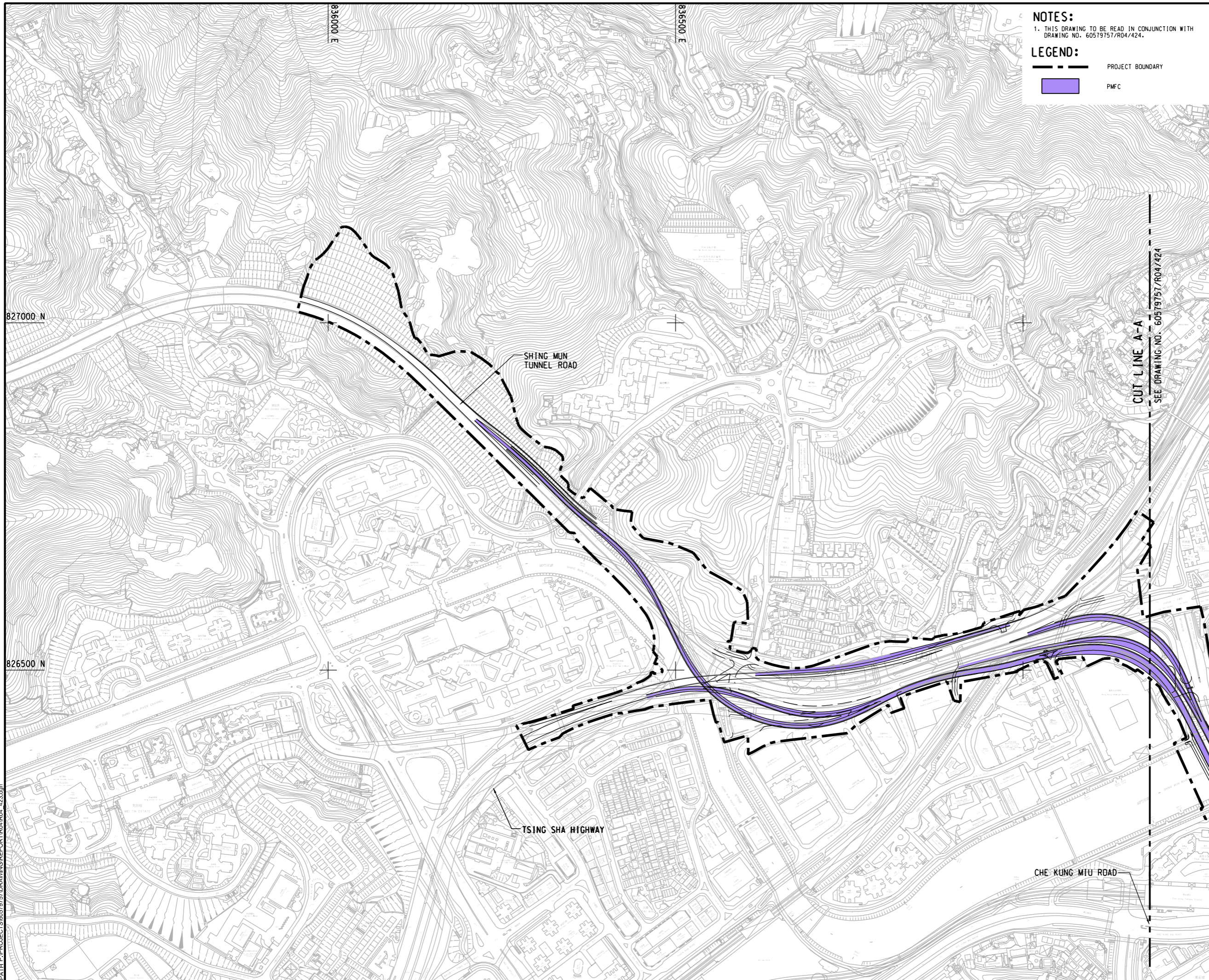
KEY PLAN

A3 1 : 100000



This drawing has been prepared for the use of AECOM's client. It may not be used, modified, reproduced or relied upon by third parties, except as agreed by AECOM or as required by law. AECOM accepts no responsibility, and disclaims any liability, whatsoever, for any part, that is less or relies on this drawing without AECOM's express written consent. All measurements must be obtained from the stated dimensions.

ISO A1 594mm x 841mm
 Approved:
 Checked:
 Designer:
 Project Management Initials:
 Plot File by: YueFB
 PATH P:\PROJECTS\60579757\DRAWING\REPORT\R04\R04_423.dgn



NOTES:
 1. THIS DRAWING TO BE READ IN CONJUNCTION WITH DRAWING NO. 60579757/R04/424.

LEGEND:

- PROJECT BOUNDARY
- PMFC

AECOM

PROJECT
 項目
**REVISED TRUNK ROAD
 T4 IN SHA TIN**

CLIENT
 業主
**土木工程拓展署
 Civil Engineering and
 Development Department**

CONSULTANT
 顧問公司
 AECOM Asia Company Ltd.
 www.aecom.com

SUB-CONSULTANTS
 分判工程顧問公司

ISSUE/REVISION
 修訂

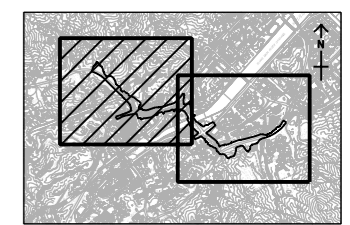
IR	DATE	DESCRIPTION	CHK.

STATUS
 階段

SCALE
 比例
 A3 1 : 5000

DIMENSION UNIT
 尺寸單位
 METRES

KEY PLAN A3 1 : 10000
 索引圖



PROJECT NO.
 項目編號
 60579757

AGREEMENT NO.
 協議編號
 CE8/2018 (HY)

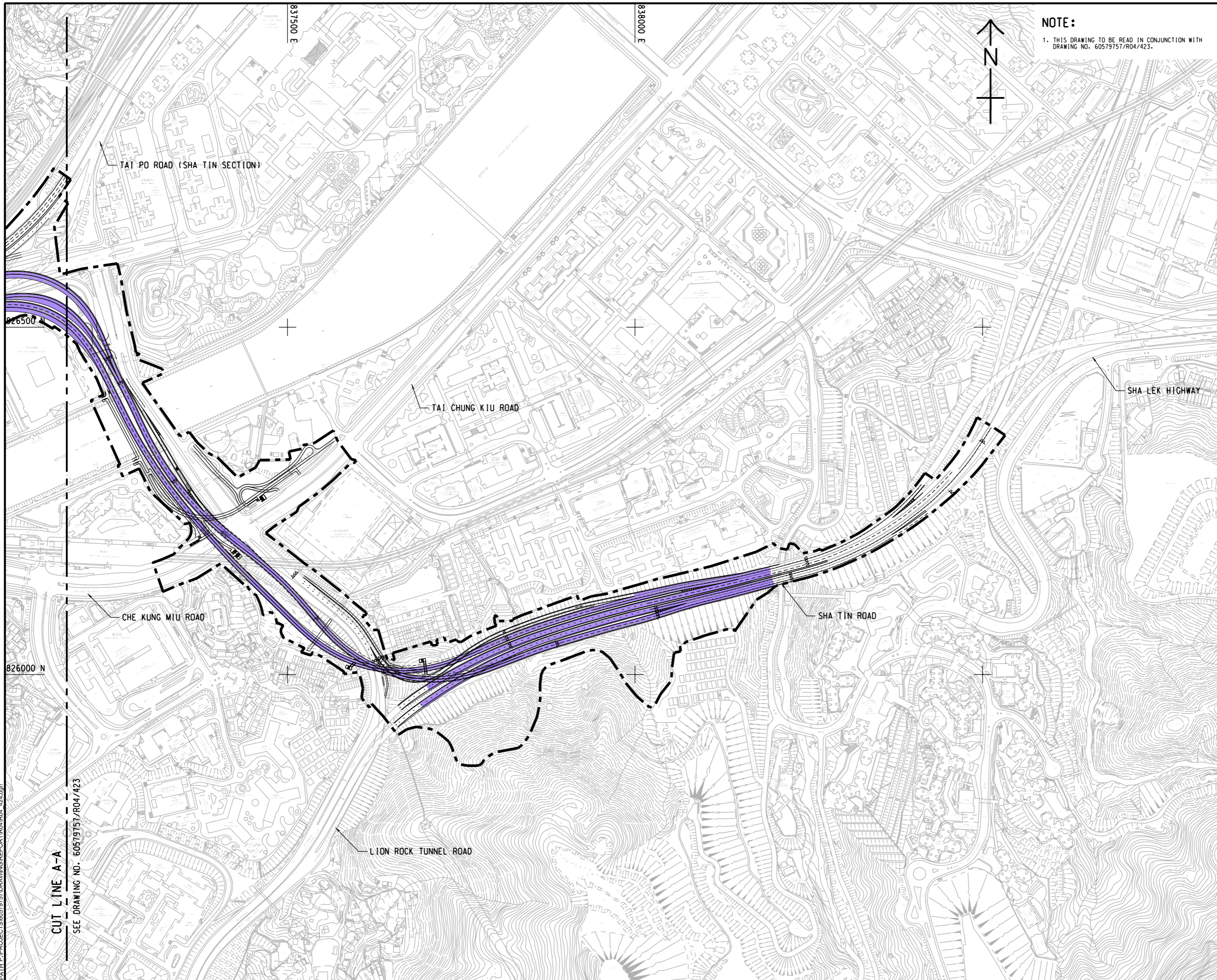
SHEET TITLE
 圖紙名稱
**EXTENT OF PMFC ON
 PROJECT ROADS**

SHEET NUMBER
 圖紙編號
 60579757/R04/423

SHEET 1 OF 2

This drawing has been prepared for the use of AECOM's client. It may not be used, modified, reproduced or released without AECOM's express written consent. Do not scale this drawing without AECOM's express written consent. All measurements must be obtained from the stated dimensions.

ISO A1 594mm x 841mm
Approved:
Checked:
Designer:
Project Management Initials:
Plot File by: YueFB
PATH P:\PROJECTS\60579757\DRAWING\REPORT\R04\R04_424.dgn



NOTE:
1. THIS DRAWING TO BE READ IN CONJUNCTION WITH DRAWING NO. 60579757/R04/423.

AECOM

PROJECT
項目

REVISED TRUNK ROAD T4 IN SHA TIN

CLIENT
業主

CEDD 土木工程拓展署
Civil Engineering and Development Department

CONSULTANT
工程顧問公司

AECOM Asia Company Ltd.
www.aecom.com

SUB-CONSULTANTS
分判工程顧問公司

ISSUE/REVISION
修訂

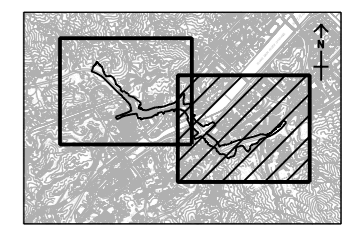
IR	DATE	DESCRIPTION	CHK.
修訂	日期	內容描述	校核

STATUS
階段

SCALE 比例
A3 1 : 5000

DIMENSION UNIT 尺寸單位
METRES

KEY PLAN 索引圖 A3 1 : 100000



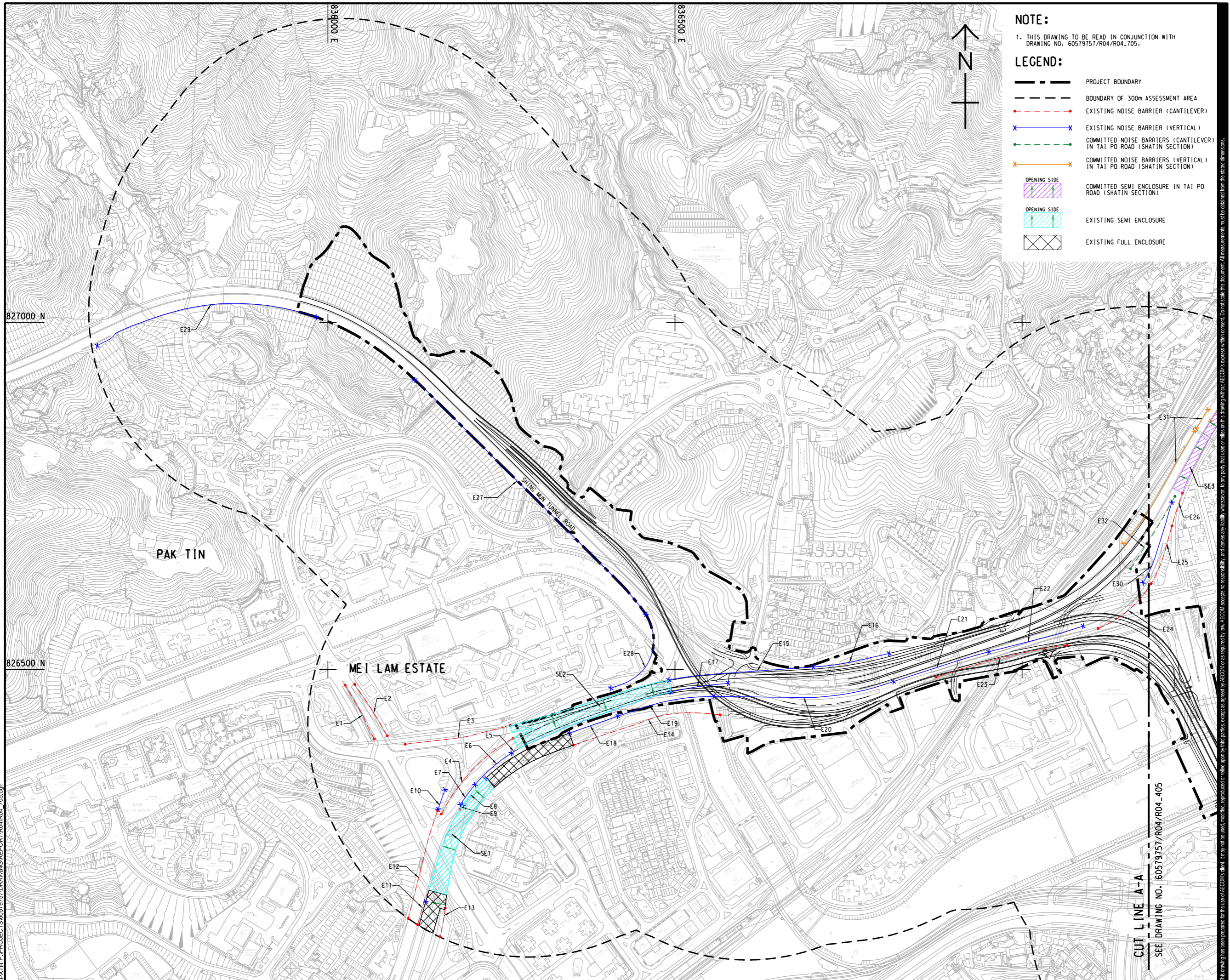
PROJECT NO. 項目編號
60579757

AGREEMENT NO. 協議編號
CE8/2018 (HY)

SHEET TITLE 圖紙名稱
EXTENT OF PMFC ON PROJECT ROADS

SHEET NUMBER 圖紙編號
60579757/R04/424

This drawing has been prepared for the use of AECOM's client. It may not be used, modified, reproduced or relied upon by third parties, except as agreed by AECOM or as required by law. AECOM accepts no responsibility, and disclaims any liability, whatsoever, for any part, that is used or relied on in this drawing without AECOM's express written consent. All measurements must be obtained from the stated dimensions.



NOTE:

1. THIS DRAWING TO BE READ IN CONJUNCTION WITH DRAWING NO. 60579757/R04/R04_705.

LEGEND:

- PROJECT BOUNDARY
- BOUNDARY OF 300m ASSESSMENT AREA
- EXISTING NOISE BARRIER (CANTILEVER)
- EXISTING NOISE BARRIER (VERTICAL)
- COMMITTED NOISE BARRIERS (CANTILEVER) IN TAI PO ROAD (SHATIN SECTION)
- COMMITTED NOISE BARRIERS (VERTICAL) IN TAI PO ROAD (SHATIN SECTION)
- COMMITTED SEMI ENCLOSURE IN TAI PO ROAD (SHATIN SECTION)
- EXISTING SEMI ENCLOSURE
- EXISTING FULL ENCLOSURE

ISSUE/REVISION
修訂

IR	DATE	DESCRIPTION	CHK.
修訂	日期	內容描述	核對

STATUS
階段

SCALE **DIMENSION UNIT**
比例 尺寸單位

A3 1 : 5000 METRES

KEY PLAN
索引圖

PROJECT NO. **AGREEMENT NO.**
項目編號 協議編號

60579757 CE8/2018 (HY)

SHEET TITLE
圖紙名稱

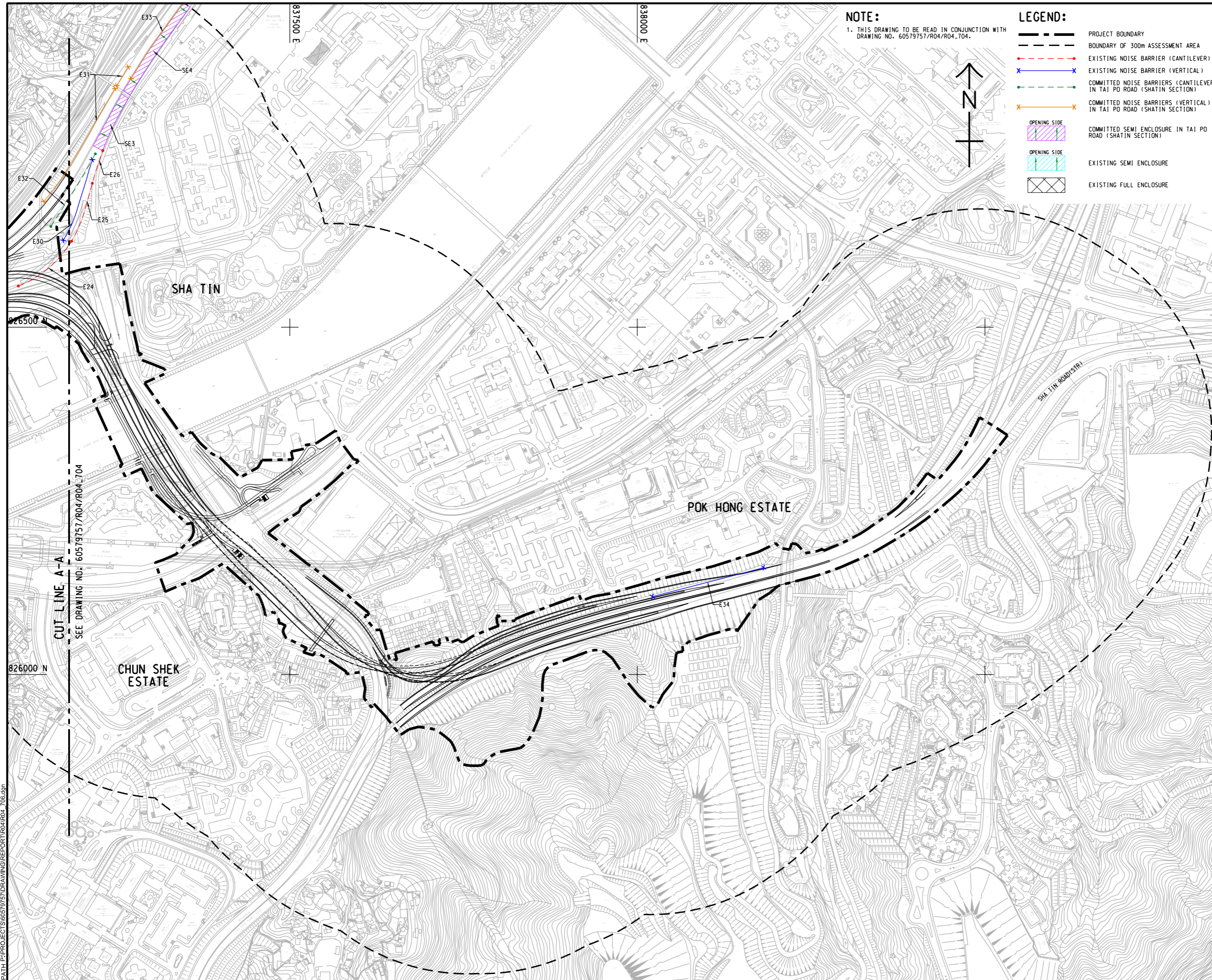
LOCATION OF EXISTING AND
COMMITTED NOISE BARRIERS AND
ENCLOSURES

SHEET NUMBER
圖紙編號

60579757/R04/705

This drawing has been prepared for the use of AECOM's client. It may not be used, modified, reproduced or relied upon by third parties, except as agreed by AECOM or as required by law. AECOM accepts no responsibility, and denies any liability whatsoever, for any part, that is used or relied on in this drawing without AECOM's express written consent. All measurements must be obtained from the stated dimensions.

ISO A1 594mm x 841mm
Approved:
Checked:
Designer:
Project Management Initials:
Plot File by: Xian, Zhang 2021/7/16
PATH P:\PROJECTS\60579757\DRAWING\REPORT\R04\R04_706.dgn



NOTE:
1. THIS DRAWING TO BE READ IN CONJUNCTION WITH DRAWING NO. 60579757/R04/R04_704.

- LEGEND:**
- PROJECT BOUNDARY
 - BOUNDARY OF 300m ASSESSMENT AREA
 - EXISTING NOISE BARRIER (CANTILEVER)
 - EXISTING NOISE BARRIER (VERTICAL)
 - COMMITTED NOISE BARRIERS (CANTILEVER) IN TAI PO ROAD (SHATIN SECTION)
 - COMMITTED NOISE BARRIERS (VERTICAL) IN TAI PO ROAD (SHATIN SECTION)
 - COMMITTED SEMI ENCLOSURE IN TAI PO ROAD (SHATIN SECTION)
 - EXISTING SEMI ENCLOSURE
 - EXISTING FULL ENCLOSURE
- OPENING SIDE
 OPENING SIDE



AECOM

PROJECT
項目

REVISED TRUNK ROAD T4 IN SHA TIN

CLIENT
業主

CEDD 土木工程拓展署
Civil Engineering and Development Department

CONSULTANT
上程顧問公司

AECOM Asia Company Ltd.
www.aecom.com

SUB-CONSULTANTS
分判上程顧問公司

ISSUE/REVISION
修訂

NO.	DATE	DESCRIPTION	CHK.

STATUS
階段

SCALE
比例

A3 1 : 5000

DIMENSION UNIT
尺寸單位

METRES

KEY PLAN
索引圖

PROJECT NO.
項目編號

60579757

AGREEMENT NO.
協議編號

CE8/2018 (HY)

SHEET TITLE
圖紙名稱

LOCATION OF EXISTING AND COMMITTED NOISE BARRIERS AND ENCLOSURES

SHEET 2 OF 2

SHEET NUMBER
圖紙編號

60579757/R04/706

This drawing has been prepared for the use of AECOM's client. It may not be used, modified, reproduced or relied upon by third parties, except as agreed by AECOM or as required by law. AECOM accepts no responsibility, and disclaims any liability, whatsoever, for any part, that uses or relies on this drawing without AECOM's express written consent. All measurements must be obtained from the stated dimensions.

Existing/Committed Noise Barriers and Enclosures

ID	Detailed Configuration of the Existing/Committed Noise Barriers and Enclosures
E1	5.8m high noise barrier (vertical) with 5m Cantilever
E2	5.8m high noise barrier (vertical) with 5m Cantilever
E3	5.8m high noise barrier (vertical) with 5m Cantilever
E4	5.8m high noise barrier (vertical) with 5m Cantilever
E5	3m high noise barrier (vertical)
E6	4m high noise barrier (vertical)
E7	4.5m high noise barrier (vertical)
E8	5m high noise barrier (vertical)
E9	4m high noise barrier (vertical)
E10	5m high noise barrier (vertical)
E11	5.8m high noise barrier (vertical) with 3m Cantilever
E12	5.8m high noise barrier (vertical) with 1.5m Cantilever
E13	5.8m high noise barrier (vertical) with 1.5m Cantilever
E14	5.8m high noise barrier (vertical) with 1.5m Cantilever
E15	5m high noise barrier (vertical)
E16	6m high noise barrier (vertical)
E17	3m high noise barrier (vertical)
E18	5.5m high noise barrier (vertical)
E19	3m high noise barrier (vertical)
E20	5m high noise barrier (vertical)
E21	4m high noise barrier (vertical)
E22	5m high noise barrier (vertical)
E23	5.8m high noise barrier (vertical) with 1.5m Cantilever
E24	5.8m high noise barrier (vertical) with 3m Cantilever
E25	5.8m high noise barrier (vertical) with 5m Cantilever
E26	5.8m high noise barrier (vertical) with 3m Cantilever
E27	4m high noise barrier (vertical)
E28	1.5m high noise barrier (vertical)
E29	1.8m high noise barrier (vertical)
E30	3m high noise barrier (vertical)
E31	Retrofitting 6m high noise barrier(vertical) under package 2
E32	Retrofitting 5m high noise barrier(vertical) with 3m cantilever under package 2
E33	Retrofitting 5m high noise barrier(vertical) under package 2
E34	4.0m high noise barrier (vertical)
SE1	Semi Enclosure with opening side
SE2	Semi Enclosure with opening side
SE3	Noise barrier (semi enclosure, 12.3m above road surface) with 2m cantilever (30°) under package 2
SE4	Noise barrier (semi enclosure, 6m above road surface) with 2m cantilever (30°) under package 2