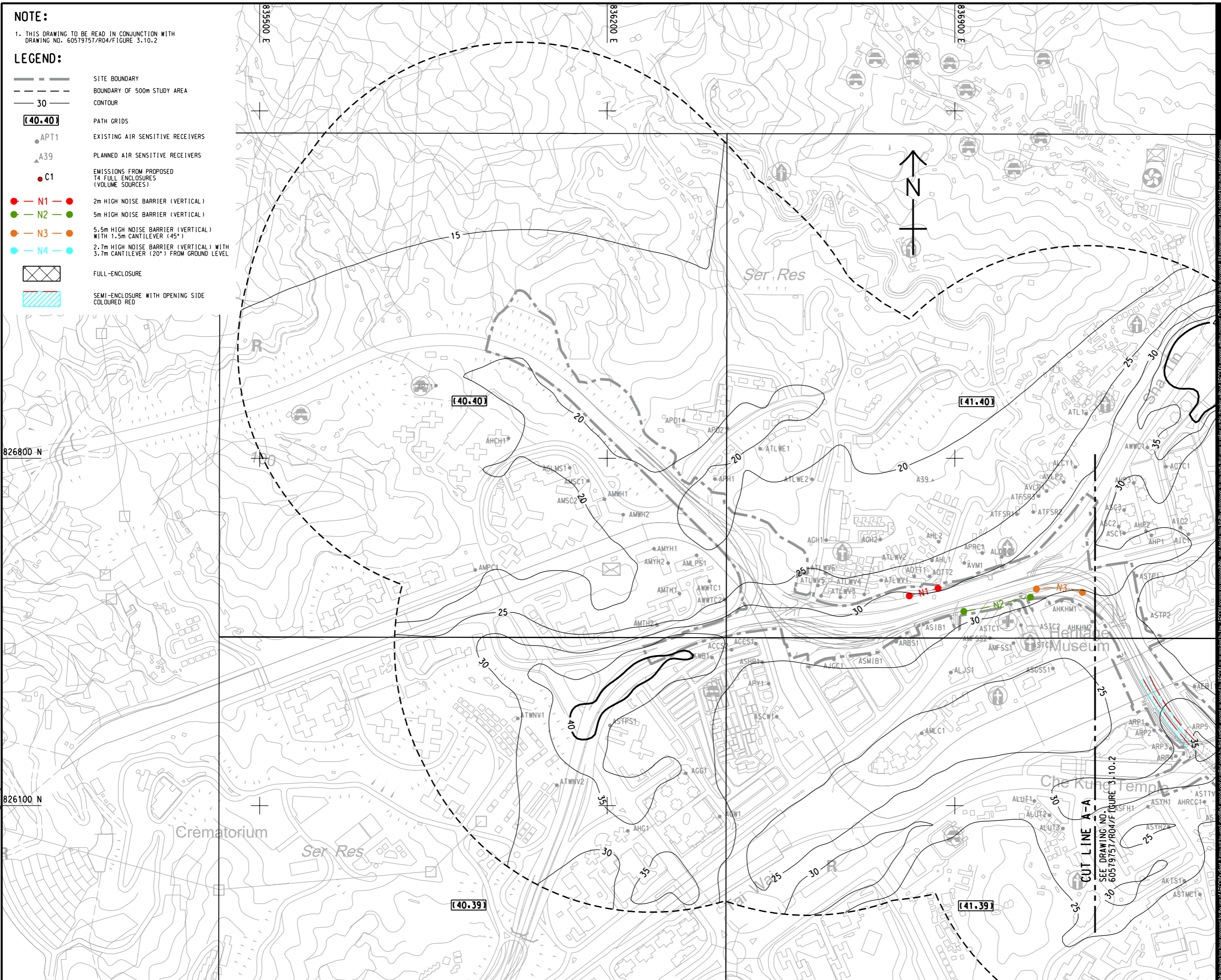


ISO A1 594mm x 841mm
Approved:
Checked:
Designer:
Project Management Initials:

NOTE:
1. THIS DRAWING TO BE READ IN CONJUNCTION WITH DRAWING NO. 60579757/R04/FIGURE 3.10.2

- LEGEND:**
- SITE BOUNDARY
 - BOUNDARY OF 500m STUDY AREA
 - 30m CONTOUR
 - PATH GRIDS
 - APT1 EXISTING AIR SENSITIVE RECEIVERS
 - A39 PLANNED AIR SENSITIVE RECEIVERS
 - C1 EMISSIONS FROM PROPOSED T4 FULL ENCLOSURES (VOLUME SOURCES)
 - N1 2m HIGH NOISE BARRIER (VERTICAL)
 - N2 5m HIGH NOISE BARRIER (VERTICAL)
 - N3 5.5m HIGH NOISE BARRIER (VERTICAL) WITH 1.5m CANTILEVER (45°)
 - N4 2.7m HIGH NOISE BARRIER (VERTICAL) WITH 3.7m CANTILEVER (20°) FROM GROUND LEVEL
 - FULL-ENCLOSURE
 - SEMI-ENCLOSURE WITH OPENING SIDE COLOURED RED



AECOM

PROJECT
REVISED TRUNK ROAD
T4 IN SHA TIN

CLIENT
CEDD 土木工程拓展署
Civil Engineering and
Development Department

CONSULTANT
AECOM Asia Company Ltd.
www.aecom.com

SUB-CONSULTANTS
分列工程有限公司

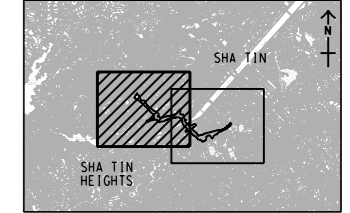
ISSUE/REVISION

| IR | DATE | DESCRIPTION | CHK. |
|----|------|-------------|------|
| | | | |
| | | | |
| | | | |
| | | | |

STATUS

SCALE
A3 1:7000
DIMENSION UNIT
METRES

KEY PLAN
A3 1:200000



PROJECT NO.
60579757
AGREEMENT NO.
CE8/2018 (HY)

SHEET TITLE
CONTOURS OF CUMULATIVE ANNUAL
NO₂ CONCENTRATION (µg/m³) AT
1.5mAG IN THE WORST
ASSESSMENT YEAR (YEAR 2028)
SHEET 1 OF 2

SHEET NUMBER
60579757/R04/FIGURE 3.10.1

This drawing has been prepared for the use of AECOM's client. It may not be used, modified, reproduced or relied upon by third parties, except as agreed by AECOM in writing. AECOM accepts no responsibility, and disclaims any liability whatsoever, for any part, that is used or relied on in this drawing without AECOM's express written consent. All measurements must be obtained from the stated dimensions.

Plot File by: cam.xu
2021/10/20
PATH P:\PROJECTS\60579757\DRAWING\REPORT\R04R04_752.dgn