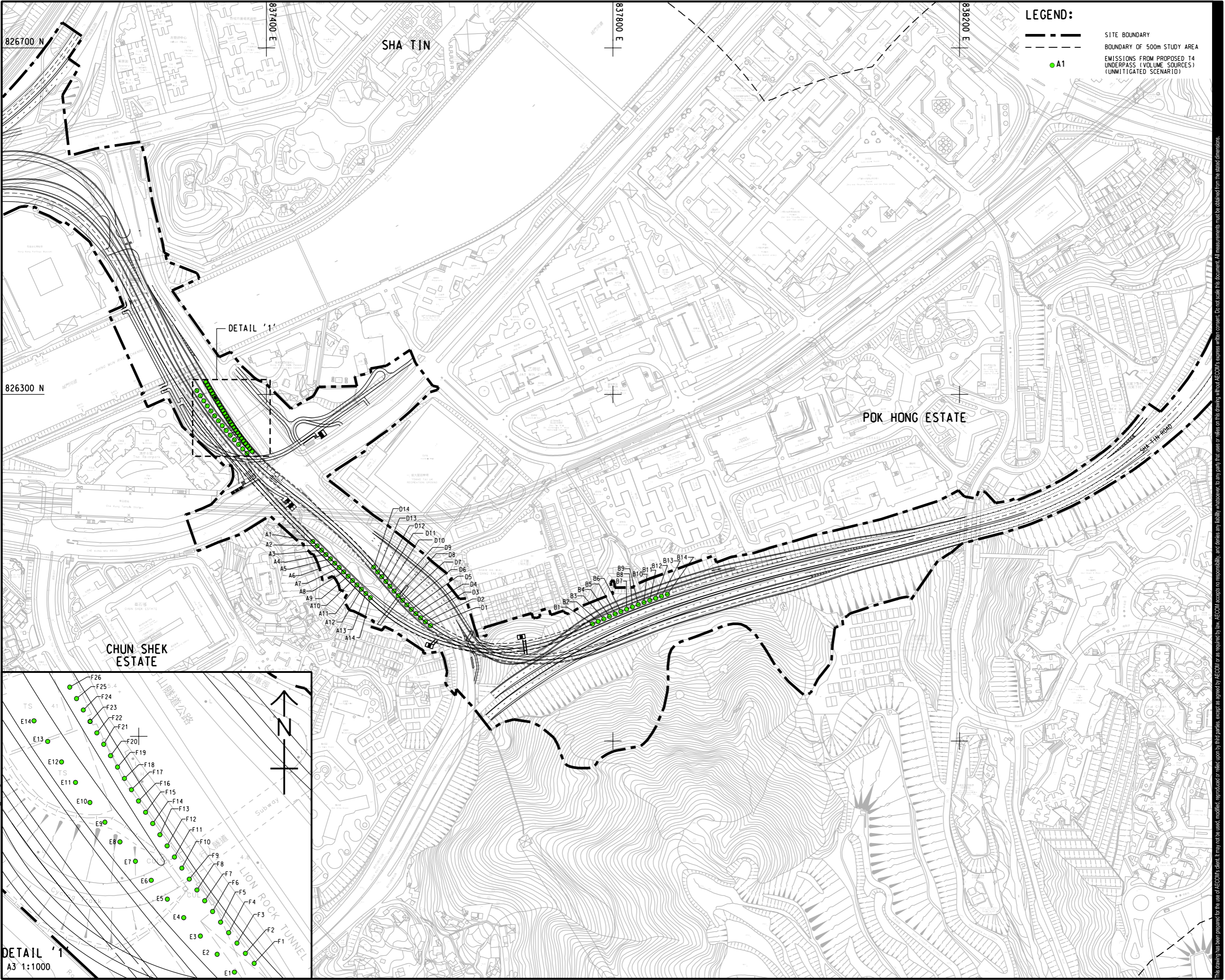


ISO A1 594mm x 841mm  
 Approved:  
 Checked:  
 Designer:  
 Project Management Initials:  
 Plot File by: Yuxuan.he, 2021/10/28  
 PATH: P:\PROJECTS\60579757\DRAWING\REPORT\R04\R04\_746.dgn



**LEGEND:**

- SITE BOUNDARY
- - - BOUNDARY OF 500m STUDY AREA
- A1 EMISSIONS FROM PROPOSED T4 UNDERPASS (VOLUME SOURCES) (UNMITIGATED SCENARIO)

**AECOM**

PROJECT  
 項目  
**REVISED TRUNK ROAD T4 IN SHA TIN**

CLIENT  
 業主  
**CEDD** 土木工程拓展署  
 Civil Engineering and Development Department

CONSULTANT  
 顧問公司  
 AECOM Asia Company Ltd.  
 www.aecom.com

SUB-CONSULTANTS  
 分判工程師/顧問公司

**ISSUE/REVISION**  
 修訂

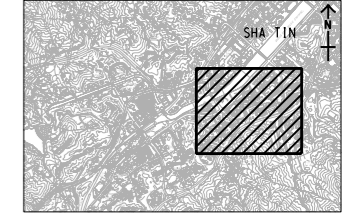
IR	DATE	DESCRIPTION	CHK.

**STATUS**  
 階段

**SCALE**  
 比例  
 A3 1:4000

**DIMENSION UNIT**  
 尺寸單位  
 METRES

**KEY PLAN** A3 1:100000  
 索引圖

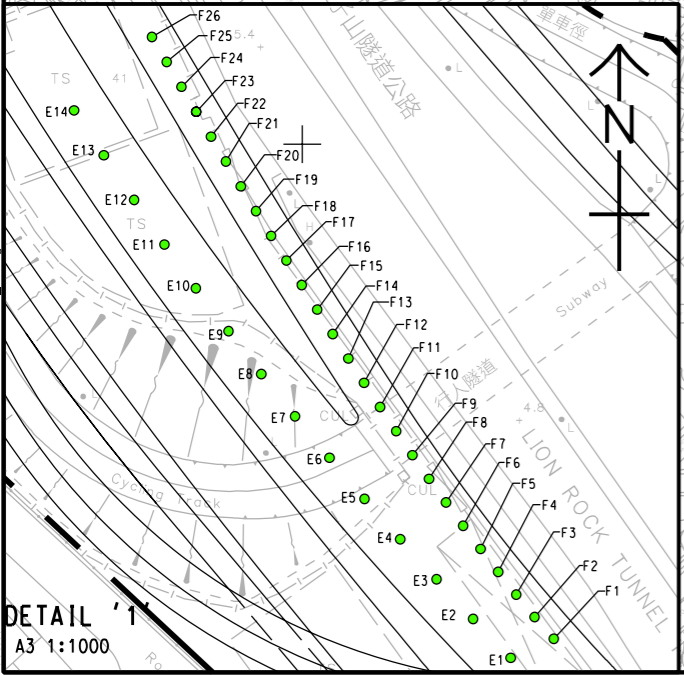


**PROJECT NO.**  
 項目編號  
 60579757

**AGREEMENT NO.**  
 協議編號  
 CE8/2018 (HY)

**SHEET TITLE**  
 圖紙名稱  
 LOCATIONS OF PORTAL EMISSION SOURCES

**SHEET NUMBER**  
 圖紙編號  
 60579757/R04/FIGURE 3.3.3



This drawing has been prepared for the use of AECOM's client. It may not be used, modified, reproduced or relied upon by third parties, except as agreed by AECOM or as required by law. AECOM accepts no responsibility, and disclaims any liability, whatsoever, for any part, that less or relies on this drawing without AECOM's express written consent. All measurements must be obtained from the stated dimensions.