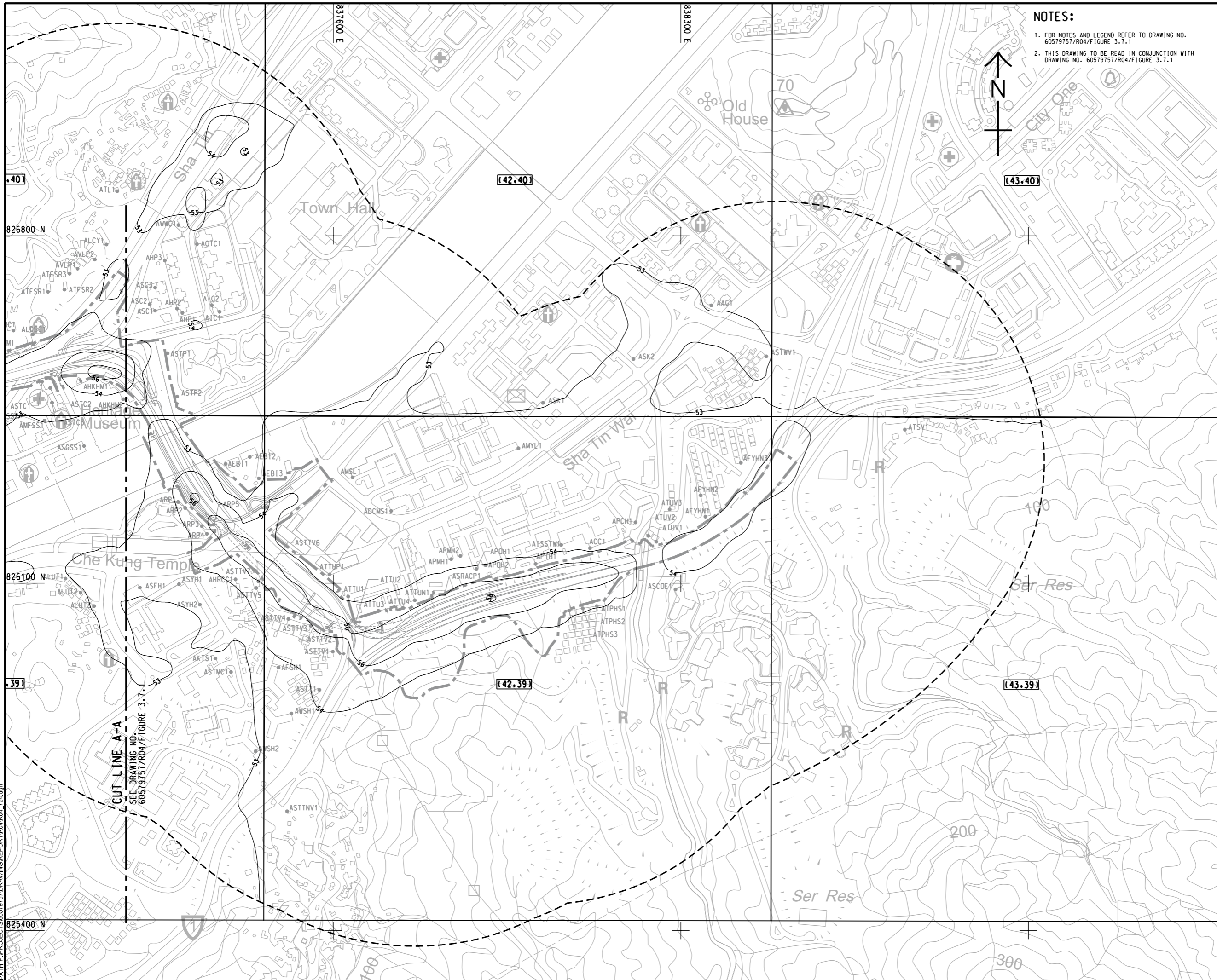


ISO A1 594mm x 841mm
 Approved:
 Checked:
 Designer:
 Project Management Initials:
 2021/10/20
 PATH P:\PROJECTS\60579757\DRAWING\REPORT\R04\R04_754.dgn



NOTES:
 1. FOR NOTES AND LEGEND REFER TO DRAWING NO. 60579757/R04/Figure 3.7.1
 2. THIS DRAWING TO BE READ IN CONJUNCTION WITH DRAWING NO. 60579757/R04/Figure 3.7.1

AECOM

PROJECT
 项目
**REVISED TRUNK ROAD
 T4 IN SHA TIN**

CLIENT
 業主
CEDD 土木工程拓展署
 Civil Engineering and
 Development Department

CONSULTANT
 顧問公司
 AECOM Asia Company Ltd.
 www.aecom.com

SUB-CONSULTANTS
 分判工程顧問公司

ISSUE/REVISION
 修訂

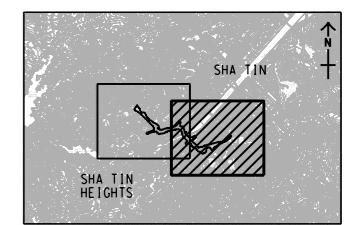
IR	DATE	DESCRIPTION	CHK.

STATUS
 階段

SCALE
 比例
 A3 1 : 7000

DIMENSION UNIT
 尺寸單位
 METRES

KEY PLAN A3 1 : 200000
 索引圖



PROJECT NO.
 項目編號
 60579757

AGREEMENT NO.
 協議編號
 CE8/2018 (HY)

SHEET TITLE
 圖紙名稱
 CONTOURS OF CUMULATIVE 10th HIGHEST DAILY
 FSP CONCENTRATION (µg/m³) AT 1.5mAG
 FOR THE WORST SCENARIO DURING
 CONSTRUCTION PHASE (YEAR 2023-YEAR 2028)

SHEET NUMBER
 圖紙編號
 60579757/R04/FIGURE 3.7.2

SHEET 2 OF 2

This drawing has been prepared for the use of AECOM's client. It may not be used, modified, reproduced or relied upon by third parties, except as agreed by AECOM or as required by law. AECOM accepts no responsibility, and disclaims any liability whatsoever, for any part, that is used or relied on in this drawing without AECOM's express written consent. All measurements must be obtained from the stated dimensions.