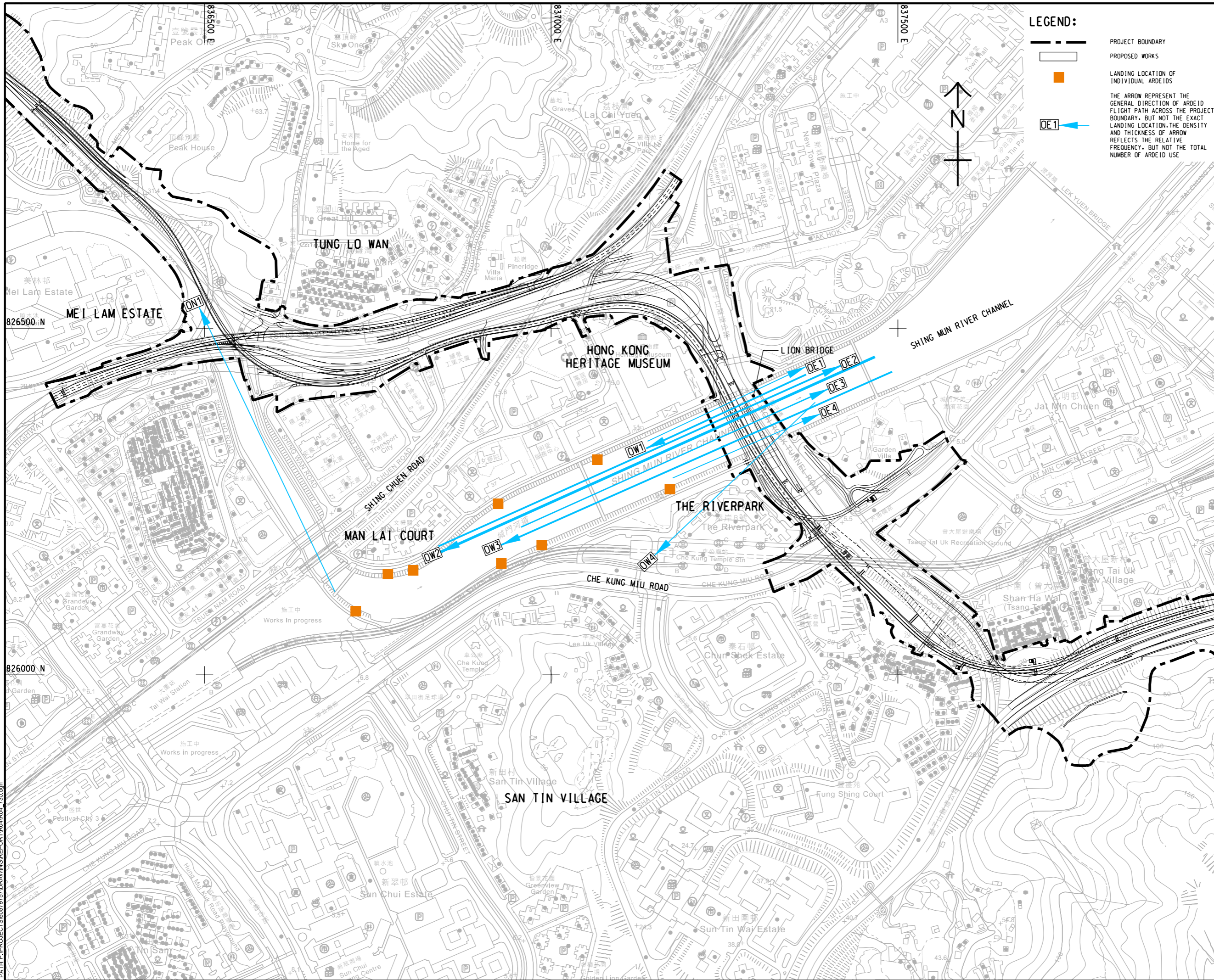


ISO A1 594mm x 841mm  
 Approved:  
 Checked:  
 Designer:  
 Project Management Initials:  
 2021/10/9  
 PATH PROJECTS/06579757/DRAWING/REPORT/R04/R04\_730.dgn  
 This drawing has been prepared for the use of AECOM's client. It may not be used, modified, reproduced or relied upon by third parties, except as required by AECOM or as required by law. AECOM accepts no responsibility, and disclaims any liability, whatsoever, for any part, that, in whole or in part, is based on this drawing without AECOM's express written consent. All measurements must be obtained from the stated dimensions.



**LEGEND:**

- PROJECT BOUNDARY
- PROPOSED WORKS
- LANDING LOCATION OF INDIVIDUAL ARDEIDS
- OE1 → THE ARROW REPRESENT THE GENERAL DIRECTION OF ARDEID FLIGHT PATH ACROSS THE PROJECT BOUNDARY, BUT NOT THE EXACT LANDING LOCATION. THE DENSITY AND THICKNESS OF ARROW REFLECTS THE RELATIVE FREQUENCY, BUT NOT THE TOTAL NUMBER OF ARDEID USE

**AECOM**

**PROJECT**  
 項目  
**REVISED TRUNK ROAD T4 IN SHA TIN**

**CLIENT**  
 業主  
**CEDD** 土木工程拓展署  
 Civil Engineering and Development Department

**CONSULTANT**  
 顧問公司  
 AECOM Asia Company Ltd.  
 www.aecom.com

**SUB-CONSULTANTS**  
 分判工程師/顧問公司

**ISSUE/REVISION**

IR	DATE	DESCRIPTION	CHK.

**STATUS**  
 階段

**SCALE**  
 比例  
 A3 1:5000

**DIMENSION UNIT**  
 尺寸單位  
 METRES

**KEY PLAN**  
 索引圖

**PROJECT NO.**  
 項目編號  
 60579757

**AGREEMENT NO.**  
 協議編號  
 CE8/2018 (HY)

**SHEET TITLE**  
 圖紙名稱  
 FLIGHT PATH OF OTHER ARDEIDS ACROSS THE PROJECT BOUNDARY

**SHEET NUMBER**  
 圖紙編號  
 60579757/R04/FIGURE 8.4.2