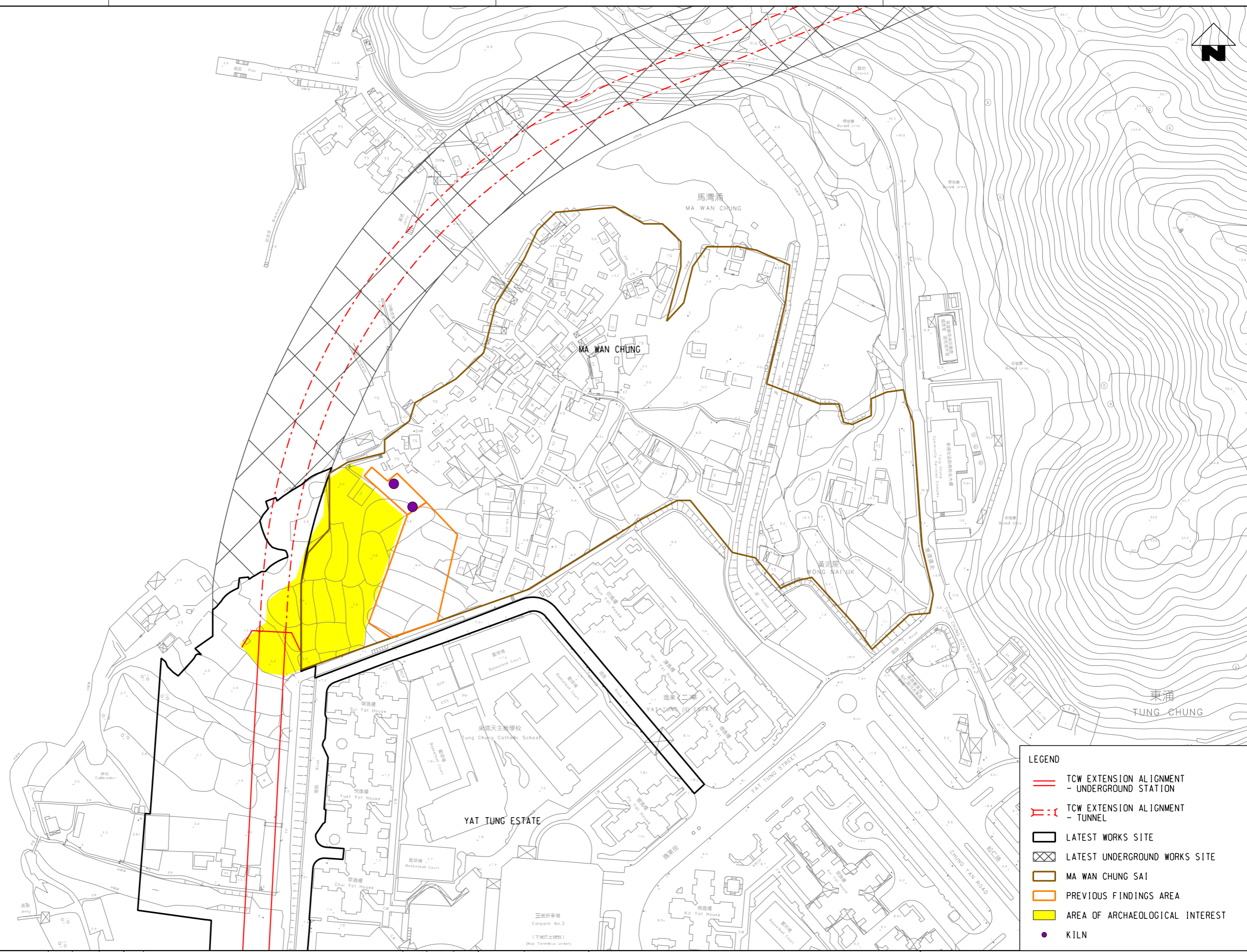
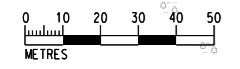


g:\common\micr\station_s\standard\plot\drw\hp_cr\apkh_c3_pdf_c.env.pdf
 1/19/2022 5:45:05 PM
 I:\KGT\RA04
 \N\KGT152\GEN\env\proj\127146\31\p\awing\deliverables\report_1_035_CulturalHeritage_WPA\Figure 11.6_B.dgn



LEGEND	
	TCW EXTENSION ALIGNMENT - UNDERGROUND STATION
	TCW EXTENSION ALIGNMENT - TUNNEL
	LATEST WORKS SITE
	LATEST UNDERGROUND WORKS SITE
	MA WAN CHUNG SAI
	PREVIOUS FINDINGS AREA
	AREA OF ARCHAEOLOGICAL INTEREST
	KILN

REV	DESCRIPTION	BY	DATE	APPROVED	REV	DESCRIPTION	BY	DATE	APPROVED
B	SECOND ISSUE				GL	190122	FC		
A	FIRST ISSUE				GL	041021	FC		

DRAWN	GL
DESIGNED	GL
CHECKED	EL
APPROVED	FC
DATE	19/01/2022

C1202 - EIA for Tung Chung Line Extension	
ORIGINATOR	ARUP
Ove Arup & Partners Hong Kong Limited	
CADD REF.	FIGURE 11.6_B.dgn

TITLE	ARCHAEOLOGICAL POTENTIAL TO THE NORTH OF THE TCW STATION	
SCALE	1 : 2000 (A3)	DRAWING NO.
		FIGURE 11.6
REV.	B	