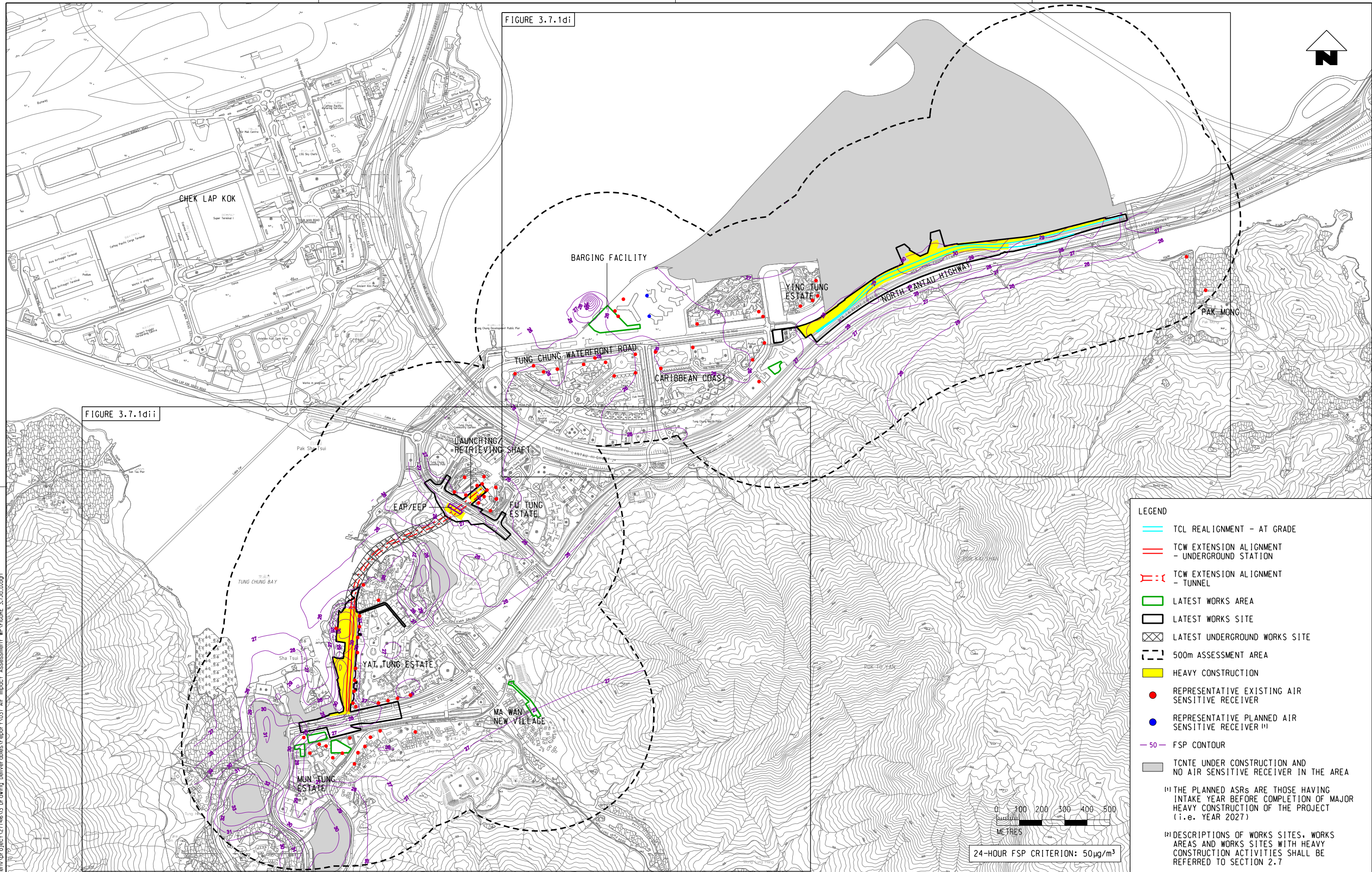


g:\common\micr\station\_s\standard\plot\dr\h\p\ar\phk\c3\pdf\c.env\p1  
Default 11/10/2021 11:44:46 AM  
\\hkghm127\cen\env\project\271613\Drawing\Deliverables\Report\037 Air Impact Assessment\WP\FIGURE 3.7.1d.D.dgn  
PLOT DRW:  
MODELNAME:  
FILENAME:



REV	DESCRIPTION	BY	DATE	APPROVED	REV	DESCRIPTION	BY	DATE	APPROVED
					D	FOURTH ISSUE	GL	101121	FC
					C	THIRD ISSUE	GL	121021	FC
					B	SECOND ISSUE	GL	240821	FC
					A	FIRST ISSUE	GL	110621	FC

DRAWN	GL
DESIGNED	GL
CHECKED	EL
APPROVED	FC
DATE	10/11/2021

DO NOT SCALE DRAWINGS. ALL DIMENSIONS SHALL BE VERIFIED ON SITE.  
(C) MTR CORPORATION LIMITED 2008 COPYRIGHT IN RESPECT OF THIS DRAWING / DOCUMENT IS OWNED BY THE MTR CORPORATION LIMITED OF HONG KONG. NO REPRODUCTION OF THE DRAWING / DOCUMENT OR ANY PART BY WHATEVER MEANS IS PERMITTED WITHOUT THE PRIOR WRITTEN CONSENT OF THE MTR CORPORATION LIMITED.

**MTR**

C1202 - EIA for Tung Chung Line Extension

ORIGINATOR

**ARUP** Ove Arup & Partners  
Hong Kong Limited

CADD REF.

FIGURE 3.7.1d.D.dgn

TITLE			REV.
MITIGATED CUMULATIVE 36th HIGHEST 24-HOUR FSP CONCENTRATIONS AT 1.5m ABOVE GROUND (YEAR 2023) (SHEET 1 OF 3)			D
SCALE	DRAWING NO.		
AS SHOWN	FIGURE 3.7.1d		

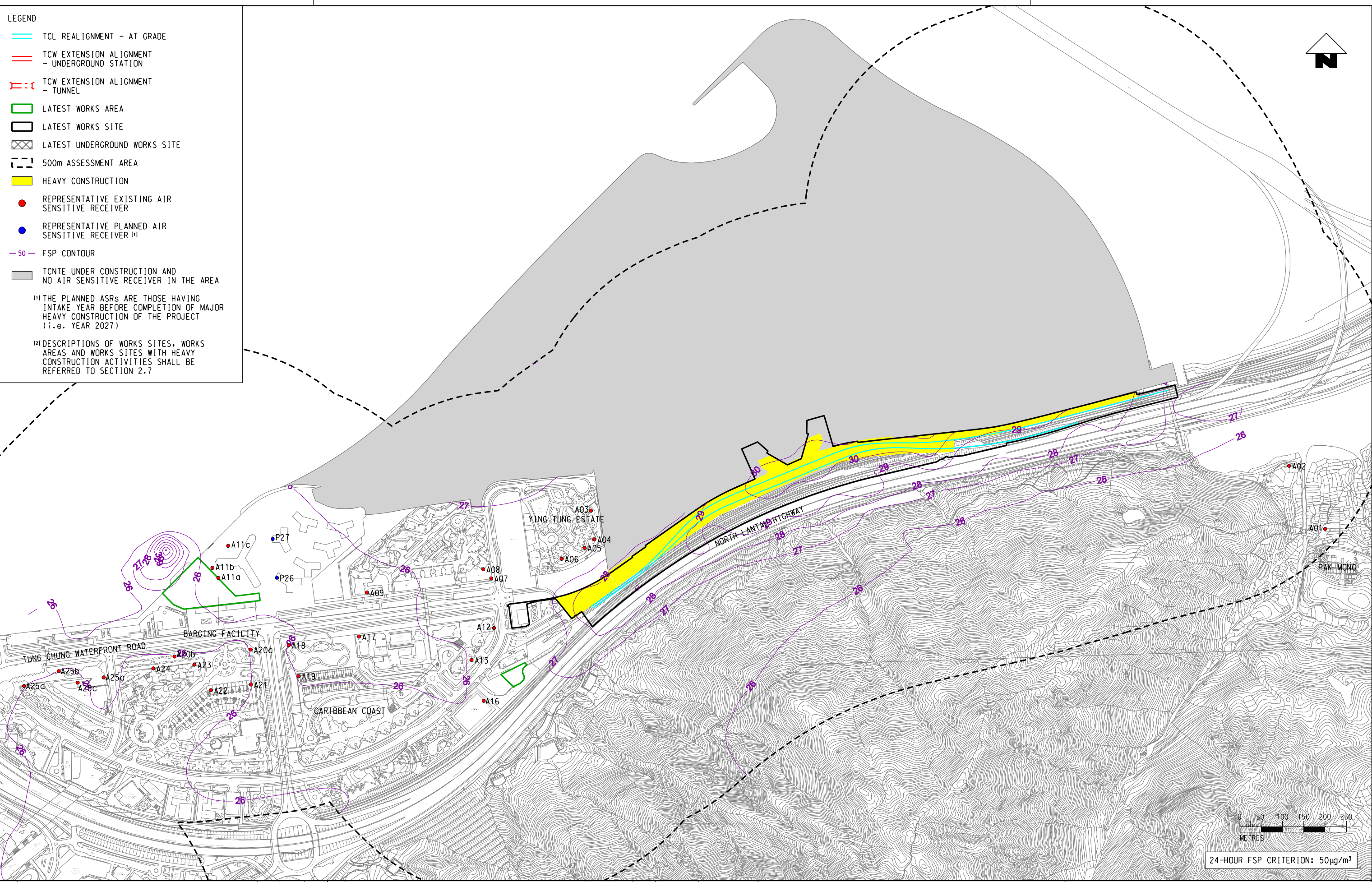


LEGEND

- TCL REALIGNMENT - AT GRADE
- TCW EXTENSION ALIGNMENT - UNDERGROUND STATION
- TCW EXTENSION ALIGNMENT - TUNNEL
- LATEST WORKS AREA
- LATEST WORKS SITE
- LATEST UNDERGROUND WORKS SITE
- 500m ASSESSMENT AREA
- HEAVY CONSTRUCTION
- REPRESENTATIVE EXISTING AIR SENSITIVE RECEIVER
- REPRESENTATIVE PLANNED AIR SENSITIVE RECEIVER <sup>(1)</sup>
- 50 FSP CONTOUR
- TCNTE UNDER CONSTRUCTION AND NO AIR SENSITIVE RECEIVER IN THE AREA

<sup>(1)</sup> THE PLANNED ASRs ARE THOSE HAVING INTAKE YEAR BEFORE COMPLETION OF MAJOR HEAVY CONSTRUCTION OF THE PROJECT (i.e. YEAR 2027)

<sup>(2)</sup> DESCRIPTIONS OF WORKS SITES, WORKS AREAS AND WORKS SITES WITH HEAVY CONSTRUCTION ACTIVITIES SHALL BE REFERRED TO SECTION 2.7



g:\common\micr\station standard\plot\dwg\tp-arup\k3-pd-f-c-env\p11  
Default: H:\TRA\RA\11/10/2021 10:26:00 AM  
\\hkghm127\cen\env\project\2714613 Drawing Deliverables\Report\037 Air Impact Assessment\WP\Figure 3.7.1di.dgn

REV	DESCRIPTION	BY	DATE	APPROVED	REV	DESCRIPTION	BY	DATE	APPROVED
D	FOURTH ISSUE				GL	101121	FC		
C	THIRD ISSUE				GL	121021	FC		
B	SECOND ISSUE				GL	240821	FC		
A	FIRST ISSUE				GL	110621	FC		

DRAWN	GL
DESIGNED	GL
CHECKED	EL
APPROVED	FC
DATE	10/11/2021

C1202 – EIA for Tung Chung Line Extension

ORIGINATOR

Ove Arup & Partners  
Hong Kong Limited

CADD REF.

FIGURE 3.7.1di\_D.dgn

DO NOT SCALE DRAWINGS. ALL DIMENSIONS SHALL BE VERIFIED ON SITE.  
(C) MTR CORPORATION LIMITED 2008. COPYRIGHT IN RESPECT OF THIS DRAWING / DOCUMENT IS OWNED BY THE MTR CORPORATION LIMITED OF HONG KONG. NO REPRODUCTION OF THE DRAWING / DOCUMENT OR ANY PART BY WHATEVER MEANS IS PERMITTED WITHOUT THE PRIOR WRITTEN CONSENT OF THE MTR CORPORATION LIMITED.

TITLE	
MITIGATED CUMULATIVE 36th HIGHEST 24-HOUR FSP CONCENTRATIONS AT 1.5m ABOVE GROUND (YEAR 2023) (SHEET 2 OF 3)	
SCALE	DRAWING NO.
AS SHOWN	FIGURE 3.7.1di
REV.	D



