

g:\common\micr\ost\ation_s\anda\plot\dr\h\p\ar\phk\c3\pdf\c.env\p1
Default PRINTED BY: HKT/RA/04 11/10/2021 5:30:20 PM
\\hkgs127\cen\env\proj\c127\h1613\p\aving\deliverables\report\037 Air Impact Assessment\WP\FIGURE 3.7.2a.C.dgn
PLOT DRW: MODELNAME: FILENAME:

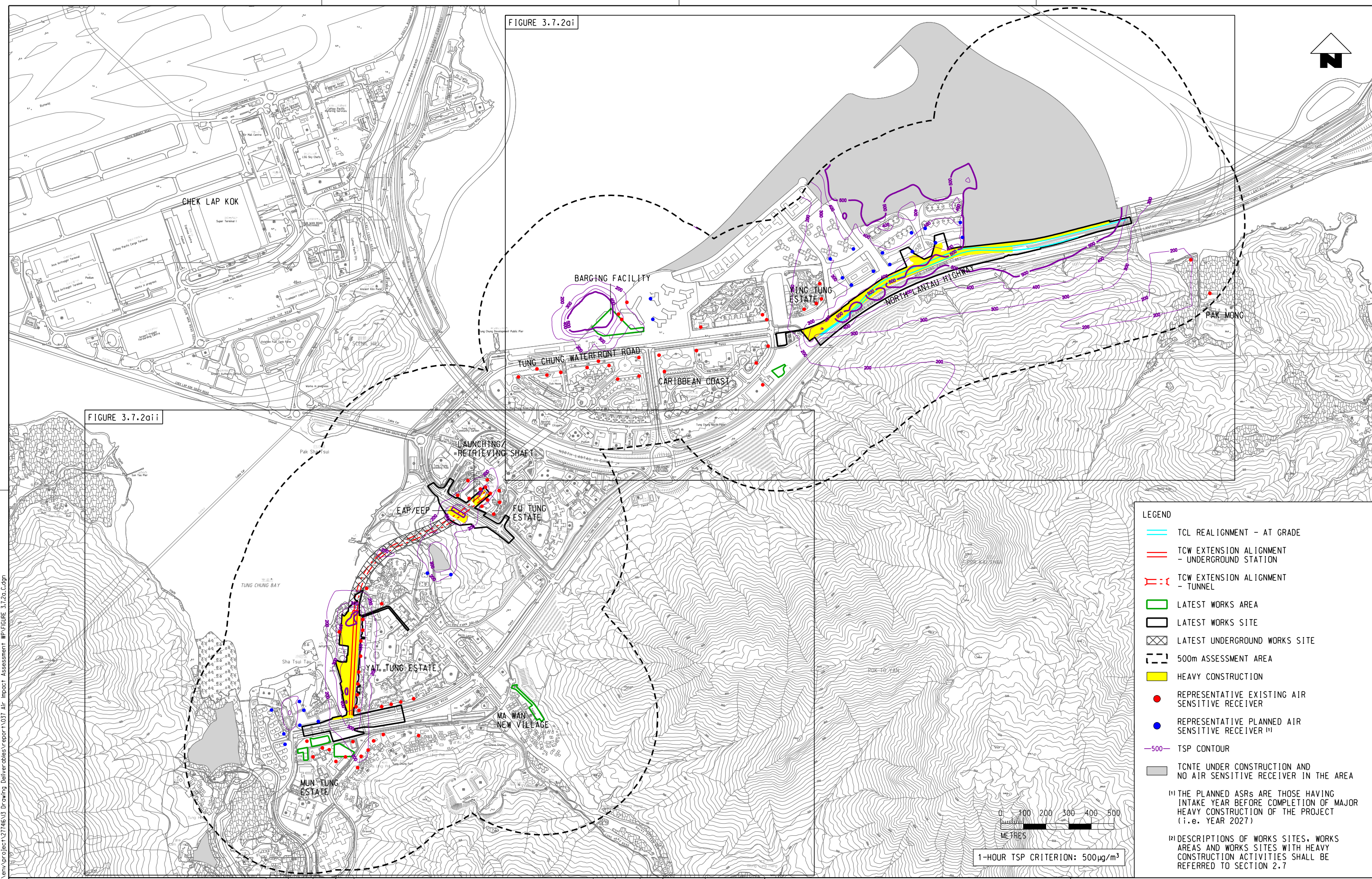


FIGURE 3.7.2ai

FIGURE 3.7.2aii

LEGEND

- TCL REALIGNMENT - AT GRADE
- TCW EXTENSION ALIGNMENT - UNDERGROUND STATION
- TCW EXTENSION ALIGNMENT - TUNNEL
- LATEST WORKS AREA
- LATEST WORKS SITE
- LATEST UNDERGROUND WORKS SITE
- 500m ASSESSMENT AREA
- HEAVY CONSTRUCTION
- REPRESENTATIVE EXISTING AIR SENSITIVE RECEIVER
- REPRESENTATIVE PLANNED AIR SENSITIVE RECEIVER⁽¹⁾
- TSP CONTOUR
- TCNTE UNDER CONSTRUCTION AND NO AIR SENSITIVE RECEIVER IN THE AREA

⁽¹⁾ THE PLANNED ASRs ARE THOSE HAVING INTAKE YEAR BEFORE COMPLETION OF MAJOR HEAVY CONSTRUCTION OF THE PROJECT (i.e. YEAR 2027)

⁽²⁾ DESCRIPTIONS OF WORKS SITES, WORKS AREAS AND WORKS SITES WITH HEAVY CONSTRUCTION ACTIVITIES SHALL BE REFERRED TO SECTION 2.7

REV	DESCRIPTION	BY	DATE	APPROVED	REV	DESCRIPTION	BY	DATE	APPROVED	DRAWN	GL	DESIGNED	GL	CHECKED	EL	APPROVED	FC	DATE	12/10/2021
C	THIRD ISSUE				GL	121021	FC												
B	SECOND ISSUE				GL	240821	FC												
A	FIRST ISSUE				GL	110621	FC												

DO NOT SCALE DRAWINGS. ALL DIMENSIONS SHALL BE VERIFIED ON SITE.
(C) MTR CORPORATION LIMITED 2008 COPYRIGHT IN RESPECT OF THIS DRAWING / DOCUMENT IS OWNED BY THE MTR CORPORATION LIMITED OF HONG KONG. NO REPRODUCTION OF THE DRAWING / DOCUMENT OR ANY PART BY WHATEVER MEANS IS PERMITTED WITHOUT THE PRIOR WRITTEN CONSENT OF THE MTR CORPORATION LIMITED.

MTR

C1202 - EIA for Tung Chung Line Extension

ORIGINATOR

ARUP Ove Arup & Partners
Hong Kong Limited

CADD REF.

FIGURE 3.7.2a.C.dgn

TITLE

MITIGATED CUMULATIVE MAXIMUM 1-HOUR TSP CONCENTRATIONS AT 1.5m ABOVE GROUND (YEAR 2027)
(SHEET 1 OF 3)

SCALE AS SHOWN

DRAWING NO. FIGURE 3.7.2a

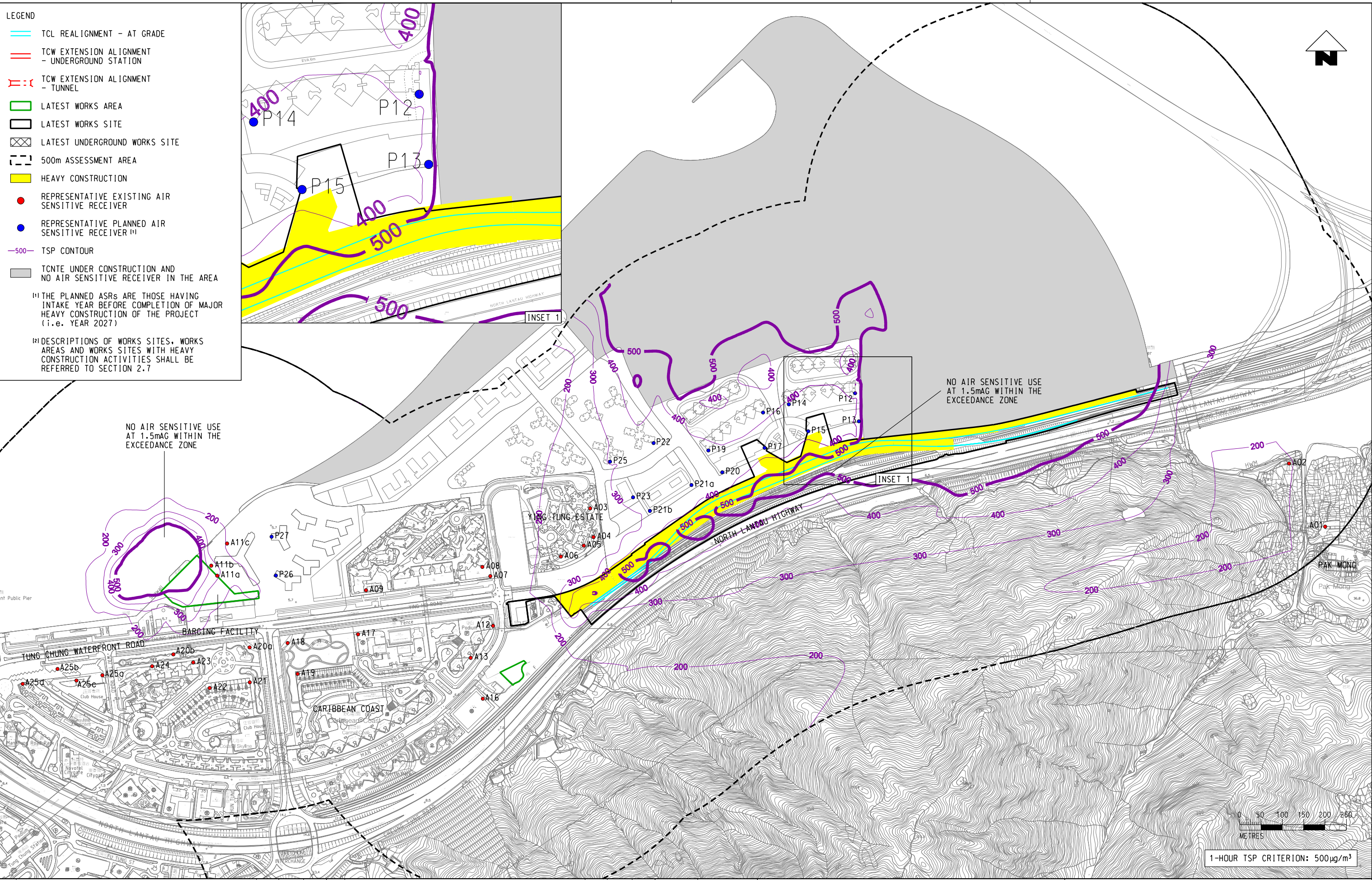
REV. C

LEGEND

- TCL REALIGNMENT - AT GRADE
- TCW EXTENSION ALIGNMENT - UNDERGROUND STATION
- TCW EXTENSION ALIGNMENT - TUNNEL
- LATEST WORKS AREA
- LATEST WORKS SITE
- LATEST UNDERGROUND WORKS SITE
- 500m ASSESSMENT AREA
- HEAVY CONSTRUCTION
- REPRESENTATIVE EXISTING AIR SENSITIVE RECEIVER
- REPRESENTATIVE PLANNED AIR SENSITIVE RECEIVER⁽¹⁾
- TSP CONTOUR
- TCNTE UNDER CONSTRUCTION AND NO AIR SENSITIVE RECEIVER IN THE AREA

⁽¹⁾ THE PLANNED ASRs ARE THOSE HAVING INTAKE YEAR BEFORE COMPLETION OF MAJOR HEAVY CONSTRUCTION OF THE PROJECT (i.e. YEAR 2027)

⁽²⁾ DESCRIPTIONS OF WORKS SITES, WORKS AREAS AND WORKS SITES WITH HEAVY CONSTRUCTION ACTIVITIES SHALL BE REFERRED TO SECTION 2.7



REV	DESCRIPTION	BY	DATE	APPROVED	REV	DESCRIPTION	BY	DATE	APPROVED	DO NOT SCALE DRAWINGS. ALL DIMENSIONS SHALL BE VERIFIED ON SITE. © MTR CORPORATION LIMITED 2008. COPYRIGHT IN RESPECT OF THIS DRAWING / DOCUMENT IS OWNED BY THE MTR CORPORATION LIMITED OF HONG KONG. NO REPRODUCTION OF THE DRAWING / DOCUMENT OR ANY PART BY WHATEVER MEANS IS PERMITTED WITHOUT THE PRIOR WRITTEN CONSENT OF THE MTR CORPORATION LIMITED.	DRAWN GL DESIGNED GL CHECKED EL APPROVED FC DATE 12/10/2021	MTR	C1202 – EIA for Tung Chung Line Extension	ORIGINATOR ARUP Ove Arup & Partners Hong Kong Limited	CADD REF. FIGURE 3.7.2ai_C.dgn	TITLE MITIGATED CUMULATIVE MAXIMUM 1-HOUR TSP CONCENTRATIONS AT 1.5m ABOVE GROUND (YEAR 2027) (SHEET 2 OF 3)	SCALE AS SHOWN	DRAWING NO. FIGURE 3.7.2ai	REV. C
					C	THIRD ISSUE	GL	121021	FC										
					B	SECOND ISSUE	GL	240821	FC										
					A	FIRST ISSUE	GL	110621	FC										

