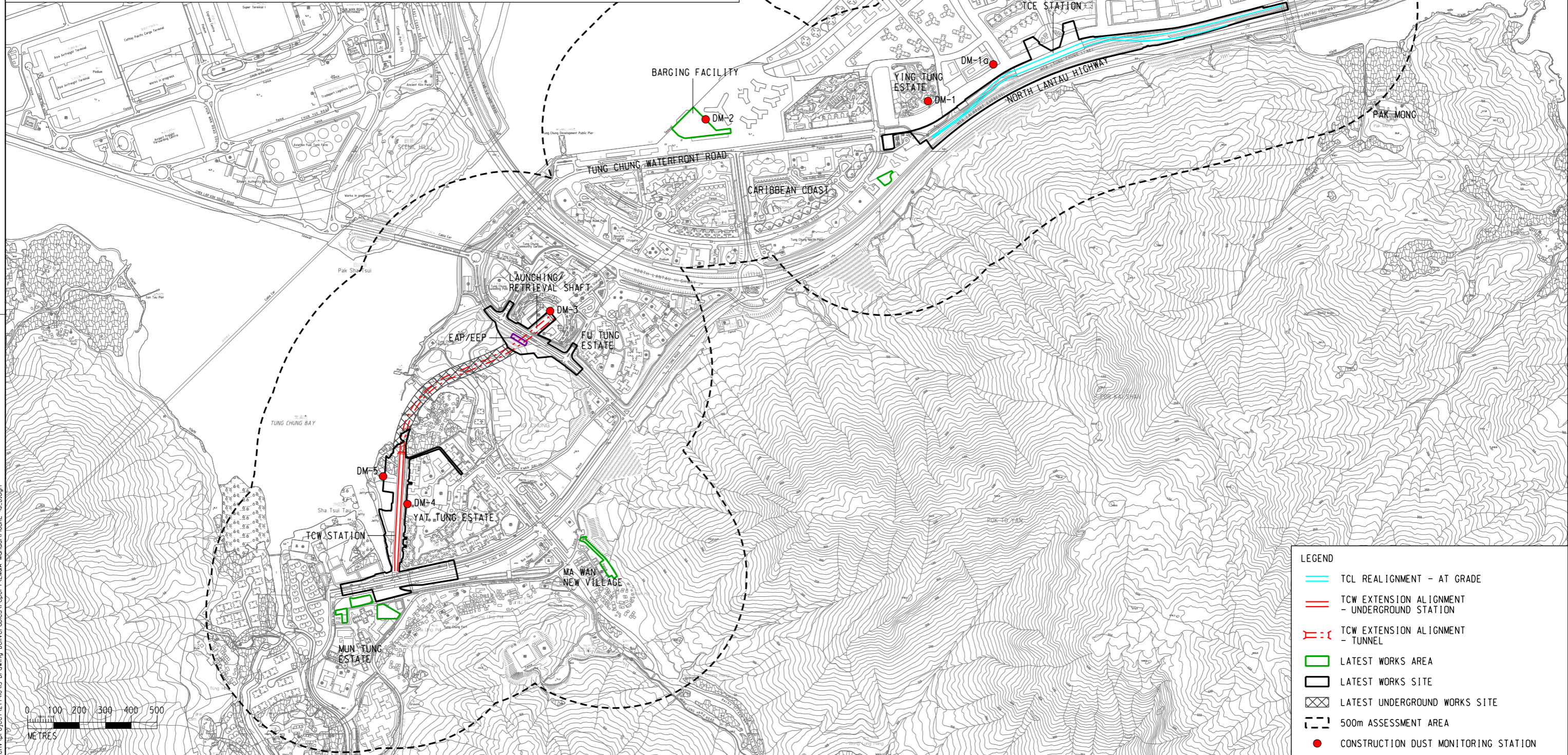


Monitoring Station ID	ASR ID	Location	Construction Activity	Shortest Horizontal Distance from the Construction Activities (m)	Monitoring Period ^[1]
DM-1	A05	Rosita Yuen Kindergarten	TCE Station and TCL realignment	~70	Throughout the construction period of corresponding activity
DM-1a ^[2]	P21a	TCNTE East - Planned Commercial Development (COM-1/Area 57)	TCE Station and TCL realignment	~40	
DM-2	A11a	Sheraton Hong Kong Tung Chung Hotel Shopping Mall	Barging point operation	~80	
DM-3	A37	Shops at Tung Chung Crescent	TBM launching/retrieval shaft	~10	
DM-4	A85	Yat Tung Shopping Centre	TCW Station	~10	
DM-5	A95	Ma Wan Chung Village	TCW Station	<10	

Note:
 [1] The monitoring period is subject to the construction programme of the relevant contracts in the construction phase.
 [2] Monitoring location DM-1a shall supersede DM-1 once the planned development at DM-1a commences operation during the corresponding construction activity.



LEGEND

- TCL REALIGNMENT - AT GRADE
- TCW EXTENSION ALIGNMENT - UNDERGROUND STATION
- - - TCW EXTENSION ALIGNMENT - TUNNEL
- LATEST WORKS AREA
- LATEST WORKS SITE
- LATEST UNDERGROUND WORKS SITE
- 500m ASSESSMENT AREA
- CONSTRUCTION DUST MONITORING STATION

REV	DESCRIPTION	BY	DATE	APPROVED	REV	DESCRIPTION	BY	DATE	APPROVED
D	FOURTH ISSUE				GL	040122	FC		
C	THIRD ISSUE				GL	111021	FC		
B	SECOND ISSUE				GL	290921	FC		
A	FIRST ISSUE				GL	070921	FC		

DRAWN: GL
 DESIGNED: GL
 CHECKED: EL
 APPROVED: FC
 DATE: 04/01/2022

MTR
 C1202 - EIA for Tung Chung Line Extension

ORIGINATOR:
ARUP Ove Arup & Partners
 Hong Kong Limited

SCALE: AS SHOWN
 DRAWING NO: FIGURE 4.1
 REV: D

TITLE
 LOCATIONS OF CONSTRUCTION DUST MONITORING STATIONS

SCALE: AS SHOWN
 DRAWING NO: FIGURE 4.1
 REV: D

PLOT DIR: g:\common\micr\ostation_s\andar\plot\dr\h\p_cr\uphk_c3\pdf_c.env.pdf
 MODELNAME: I:\KGT\RA04_17472022_146328_FM
 FILENAME: \Y\KGT152\CEEN\env\proj\ec\12714633\p_aving\deliverables\report\EM&A_Monmon\FIGURE_4.1.dgn