

LEGEND:

- PROPOSED ALIGNMENT
- L_{max} 85 dB(A)
- REPRESENTATIVE NOISE SENSITIVE RECEIVER - EXISTING
- REPRESENTATIVE NOISE SENSITIVE RECEIVER - PLANNED
- ↑ NOISE ASSESSMENT POINT



REV	DESCRIPTION	BY	DATE	APPROVED	REV	DESCRIPTION	BY	DATE	APPROVED

DRAWN	
DESIGNED	
CHECKED	
APPROVED	
DATE	

MTR

TUEN MUN SOUTH EXTENSION

ORIGINATOR

AECOM

CADD REF. SK7041.dgn

TITLE

C1502

TUEN MUN SOUTH EXTENSION

LOCATIONS OF REPRESENTATIVE NOISE ASSESSMENT POINTS

(RAILWAY NOISE)

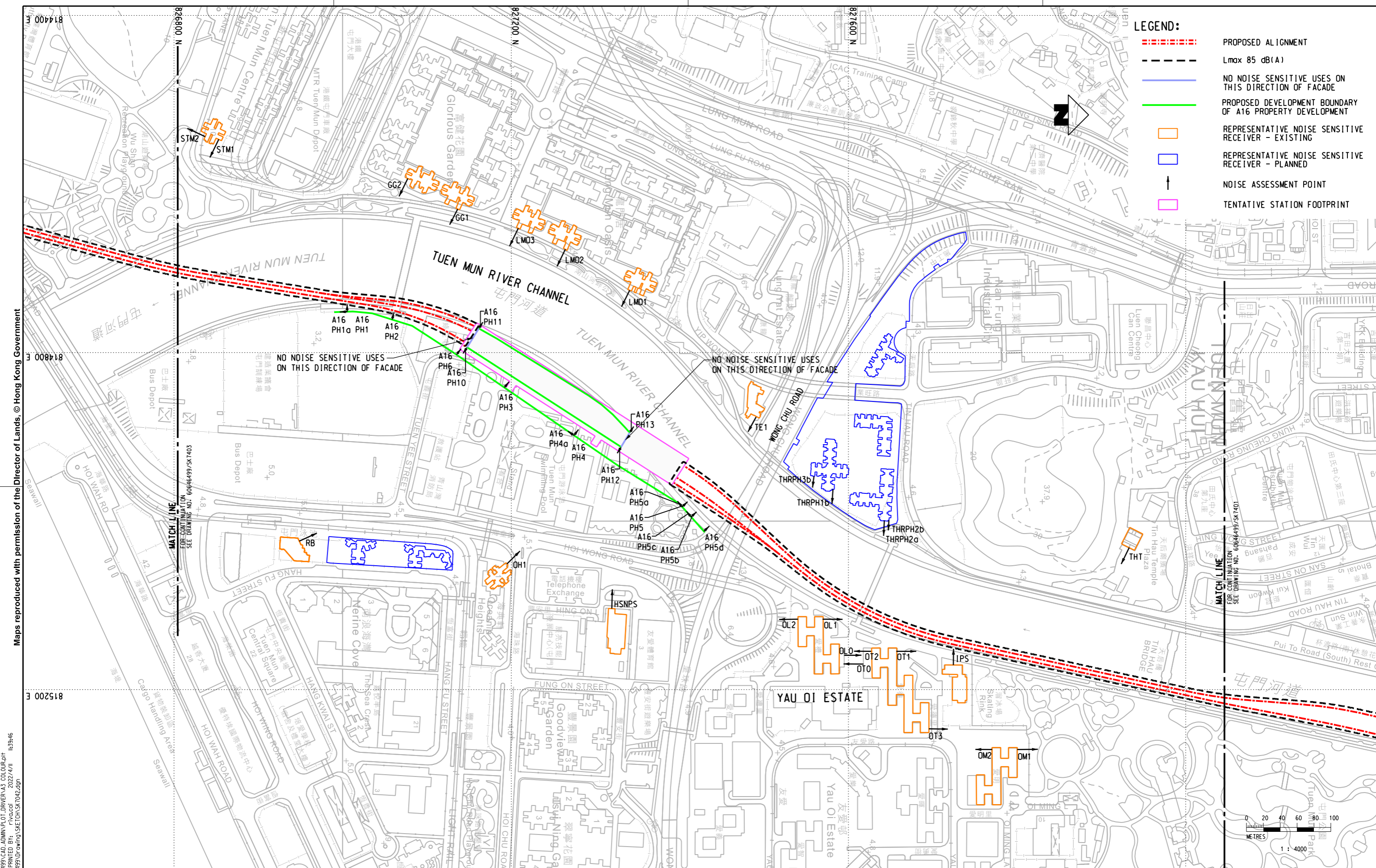
(SHEET 1 OF 3)

SCALE 1 : 4000 (A3)

FIGURE NO. SK7041

REV. -

DO NOT SCALE DRAWINGS. ALL DIMENSIONS SHALL BE VERIFIED ON SITE.
 © MTR CORPORATION LIMITED 2008. COPYRIGHT IN RESPECT OF THIS DRAWING / DOCUMENT IS OWNED BY THE MTR CORPORATION LIMITED OF HONG KONG. NO REPRODUCTION OF THE DRAWING / DOCUMENT OR ANY PART BY WHATEVER MEANS IS PERMITTED WITHOUT THE PRIOR WRITTEN CONSENT OF THE MTR CORPORATION LIMITED.









- LEGEND:**
- - - - - PROPOSED ALIGNMENT
 - - - - - L_{max} 85 dB(A)
 - — — — — NO NOISE SENSITIVE USES ON THIS DIRECTION OF FACADE
 - — — — — PROPOSED DEVELOPMENT BOUNDARY OF A16 PROPERTY DEVELOPMENT
 - REPRESENTATIVE NOISE SENSITIVE RECEIVER - EXISTING
 - REPRESENTATIVE NOISE SENSITIVE RECEIVER - PLANNED
 - ↑ NOISE ASSESSMENT POINT
 - TENTATIVE STATION FOOTPRINT

Maps reproduced with permission of the Director of Lands, © Hong Kong Government

P:\PROJECTS\60646499\CAD_ADMIN\PLT_DRIVER\A3_COLOUR.plt
 PRINTED BY: rlvaco
 P:\PROJECTS\60646499\drawing_SKE\CA\SK_042.dgn
 FILENAME:

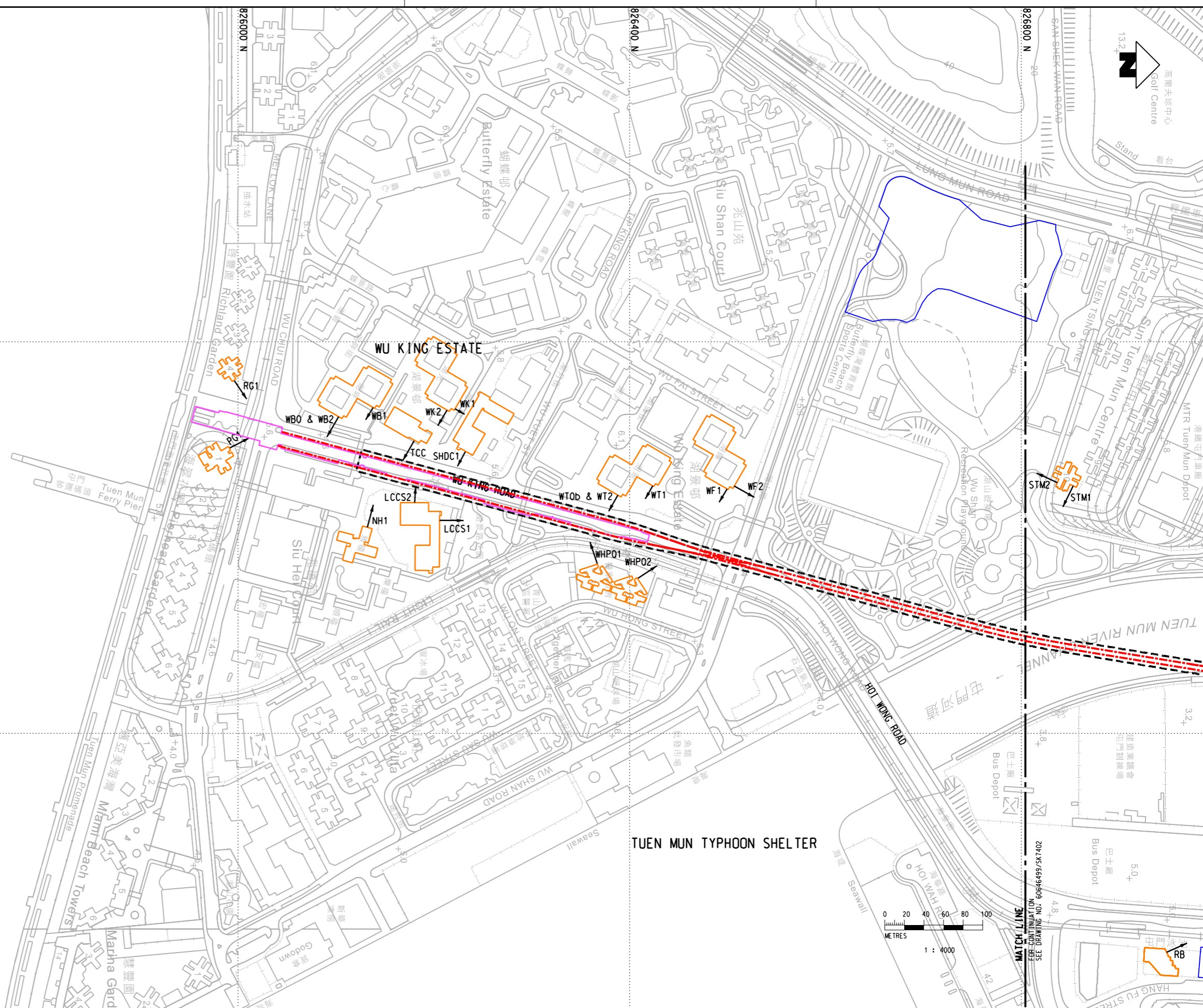
DRAWN				MTR				TITLE				C1502			
DESIGNED				TUEN MUN SOUTH EXTENSION				TUEN MUN SOUTH EXTENSION				TUEN MUN SOUTH EXTENSION			
CHECKED								ORIGINATOR				LOCATIONS OF REPRESENTATIVE NOISE ASSESSMENT POINTS			
APPROVED				AECOM				AECOM				AECOM			
DATE								CADD REF.				SCALE			
DO NOT SCALE DRAWINGS. ALL DIMENSIONS SHALL BE VERIFIED ON SITE.				SK7042.dgn				1 : 4000 (A3)				SK7042			
RESPECT OF THIS DRAWING / DOCUMENT IS OWNED BY THE MTR CORPORATION LIMITED OF HONG KONG. NO REPRODUCTION OF THE DRAWING / DOCUMENT OR ANY PART BY WHATEVER MEANS IS PERMITTED WITHOUT THE PRIOR WRITTEN CONSENT OF THE MTR CORPORATION LIMITED.															
REV	DESCRIPTION	BY	DATE	APPROVED	REV	DESCRIPTION	BY	DATE	APPROVED	REV	DESCRIPTION	BY	DATE	APPROVED	REV

- LEGEND:**
-  PROPOSED ALIGNMENT
 -  L_{max} 85 dB(A)
 -  TENTATIVE STATION FOOTPRINT
 -  REPRESENTATIVE NOISE SENSITIVE RECEIVER - EXISTING
 -  REPRESENTATIVE NOISE SENSITIVE RECEIVER - PLANNED
 -  NOISE ASSESSMENT POINT

Maps reproduced with permission of the Director of Lands, © Hong Kong Government

PLOT DRW: P:\PROJECTS\60646499\CAD_ADMIN\PLT_DRIVER\A3_COLOUR.plt
 DATE: 2022/7/30 9:45:55
 MODEL NAME: P:\PROJECTS\60646499\DRAWING_SHEETS\SK7043.dgn

REV	DESCRIPTION	BY	DATE	APPROVED	REV	DESCRIPTION	BY	DATE	APPROVED



DRAWN	
DESIGNED	
CHECKED	
APPROVED	
DATE	

MTR

TUEN MUN SOUTH EXTENSION

ORIGINATOR

AECOM

CADD REF. SK7043.dgn

TITLE

C1502

TUEN MUN SOUTH EXTENSION

LOCATIONS OF REPRESENTATIVE NOISE ASSESSMENT POINTS

(RAILWAY NOISE)

(SHEET 3 OF 3)

SCALE 1 : 4000 (A3)

FIGURE NO. SK7043

REV. -

PLOT DRW: P:\PROJECTS\60646499\CAD_ADMIN\PLT_DRIVER\A3_COLOUR.plt
 DATE: 2022/7/30 9:45:55
 MODEL NAME: P:\PROJECTS\60646499\DRAWING_SHEETS\SK7043.dgn