



TMS-T1654 : FICUS MICROCARPA



TMS-T1724 : FICUS MICROCARPA



PTR-T181 : FICUS VIRENS

REV	DESCRIPTION	BY	DATE	APPROVED	REV	DESCRIPTION	BY	DATE	APPROVED

DRAWN	
DESIGNED	
CHECKED	
APPROVED	
DATE	
DO NOT SCALE DRAWINGS. ALL DIMENSIONS SHALL BE VERIFIED ON SITE. © MTR CORPORATION LIMITED 2008 COPYRIGHT IN RESPECT OF THIS DRAWING / DOCUMENT IS OWNED BY THE MTR CORPORATION LIMITED OF HONG KONG. NO REPRODUCTION OF THE DRAWING / DOCUMENT OR ANY PART BY WHATEVER MEANS IS PERMITTED WITHOUT THE PRIOR WRITTEN CONSENT OF THE MTR CORPORATION LIMITED.	

MTR

TUEN MUN SOUTH EXTENSION

ORIGINATOR

AECOM

CADD REF. C1502_C_TME_ACM_M57_131.dgn

TITLE

C1502
 TUEN MUN SOUTH EXTENSION
 TREE GROUPS

SCALE 1 : 10000 (A3)

FIGURE NO. C1502/C/TME/ACM/M57/131

REV. A



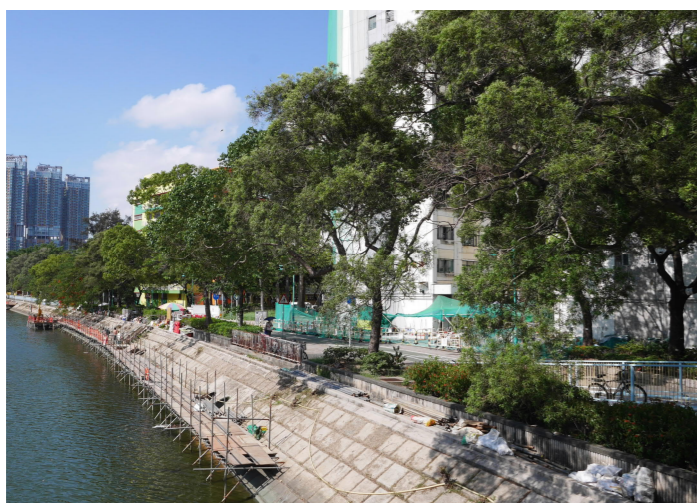
TG01



TG02



TG03



TG04



TG06



TG07



TG08



TG09



TG10

REV	DESCRIPTION	BY	DATE	APPROVED	REV	DESCRIPTION	BY	DATE	APPROVED

DRAWN	
DESIGNED	
CHECKED	
APPROVED	
DATE	

MTR

TUEN MUN SOUTH EXTENSION

ORIGINATOR

AECOM

CADD REF. C1502_C_TME_ACM_M57_132.dgn

TITLE	C1502 TUEN MUN SOUTH EXTENSION TREE GROUP PHOTOS (SHEET 1 OF 2)
SCALE	1 : 10000 (A3)
FIGURE NO.	C1502/C/TME/ACM/M57/132
REV.	A



TG11



TG12



TG13



TG14



TG15



TG16



TG17



TG18

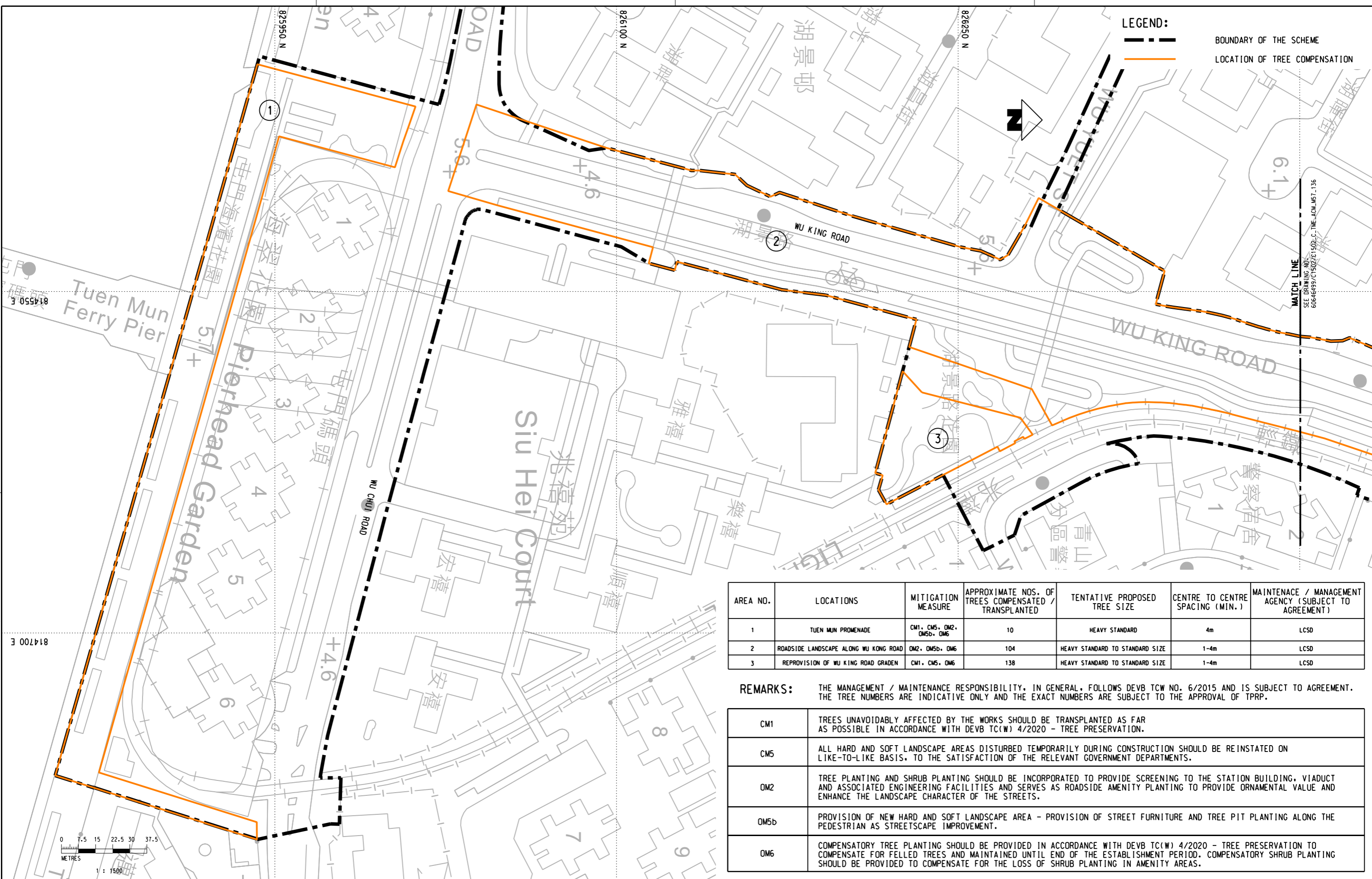
Maps reproduced with permission of the Director of Lands, © Hong Kong Government

P:\PROJECTS\6064699\CAD_ADMIN\PILOT_DRIVER\A3_COLOUR.plt
 2022/7/26 16:15:58
 FILENAME: P:\PROJECTS\6064699\DRAWING\REPORT\0502\0502_C_TME_ACM_M57_133.dgn

REV	DESCRIPTION	BY	DATE	APPROVED	REV	DESCRIPTION	BY	DATE	APPROVED

DRAWN			TUEN MUN SOUTH EXTENSION
DESIGNED			
CHECKED			
APPROVED			
DATE		ORIGINATOR	AECOM
<small>DO NOT SCALE DRAWINGS. ALL DIMENSIONS SHALL BE VERIFIED ON SITE. © MTR CORPORATION LIMITED 2008 COPYRIGHT IN RESPECT OF THIS DRAWING / DOCUMENT IS OWNED BY THE MTR CORPORATION LIMITED OF HONG KONG. NO REPRODUCTION OF THE DRAWING / DOCUMENT OR ANY PART BY WHATEVER MEANS IS PERMITTED WITHOUT THE PRIOR WRITTEN CONSENT OF THE MTR CORPORATION LIMITED.</small>		CADD REF.	C1502_C_TME_ACM_M57_133.dgn

TITLE C1502 TUEN MUN SOUTH EXTENSION TREE GROUP PHOTOS (SHEET 2 OF 2)	
SCALE 1 : 10000 (A3)	FIGURE NO. C1502/C/TME/ACM/M57/133
REV.	A



LEGEND:
 - - - BOUNDARY OF THE SCHEME
 — LOCATION OF TREE COMPENSATION

AREA NO.	LOCATIONS	MITIGATION MEASURE	APPROXIMATE NOS. OF TREES COMPENSATED / TRANSPLANTED	TENTATIVE PROPOSED TREE SIZE	CENTRE TO CENTRE SPACING (MIN.)	MAINTENANCE / MANAGEMENT AGENCY (SUBJECT TO AGREEMENT)
1	TUEN MUN PROMENADE	CM1, CM5, OM2, OM5b, OM6	10	HEAVY STANDARD	4m	LCSD
2	ROADSIDE LANDSCAPE ALONG WU KONG ROAD	OM2, OM5b, OM6	104	HEAVY STANDARD TO STANDARD SIZE	1-4m	LCSD
3	REPROVISION OF WU KING ROAD GRADE	CM1, CM5, OM6	138	HEAVY STANDARD TO STANDARD SIZE	1-4m	LCSD

REMARKS: THE MANAGEMENT / MAINTENANCE RESPONSIBILITY, IN GENERAL, FOLLOWS DEVB TCW NO. 6/2015 AND IS SUBJECT TO AGREEMENT. THE TREE NUMBERS ARE INDICATIVE ONLY AND THE EXACT NUMBERS ARE SUBJECT TO THE APPROVAL OF TPRP.

CM1	TREES UNAVOIDABLY AFFECTED BY THE WORKS SHOULD BE TRANSPLANTED AS FAR AS POSSIBLE IN ACCORDANCE WITH DEVB TC(W) 4/2020 - TREE PRESERVATION.
CM5	ALL HARD AND SOFT LANDSCAPE AREAS DISTURBED TEMPORARILY DURING CONSTRUCTION SHOULD BE REINSTATED ON LIKE-TO-LIKE BASIS, TO THE SATISFACTION OF THE RELEVANT GOVERNMENT DEPARTMENTS.
OM2	TREE PLANTING AND SHRUB PLANTING SHOULD BE INCORPORATED TO PROVIDE SCREENING TO THE STATION BUILDING, VIADUCT AND ASSOCIATED ENGINEERING FACILITIES AND SERVES AS ROADSIDE AMENITY PLANTING TO PROVIDE ORNAMENTAL VALUE AND ENHANCE THE LANDSCAPE CHARACTER OF THE STREETS.
OM5b	PROVISION OF NEW HARD AND SOFT LANDSCAPE AREA - PROVISION OF STREET FURNITURE AND TREE PIT PLANTING ALONG THE PEDESTRIAN AS STREETSCAPE IMPROVEMENT.
OM6	COMPENSATORY TREE PLANTING SHOULD BE PROVIDED IN ACCORDANCE WITH DEVB TC(W) 4/2020 - TREE PRESERVATION TO COMPENSATE FOR FELLED TREES AND MAINTAINED UNTIL END OF THE ESTABLISHMENT PERIOD. COMPENSATORY SHRUB PLANTING SHOULD BE PROVIDED TO COMPENSATE FOR THE LOSS OF SHRUB PLANTING IN AMENITY AREAS.

REV	DESCRIPTION	BY	DATE	APPROVED	REV	DESCRIPTION	BY	DATE	APPROVED

MTR

TUEN MUN SOUTH EXTENSION

AECOM

ORIGINATOR

CADD REF. C1502_C/TME_ACM_M57_135.dgn

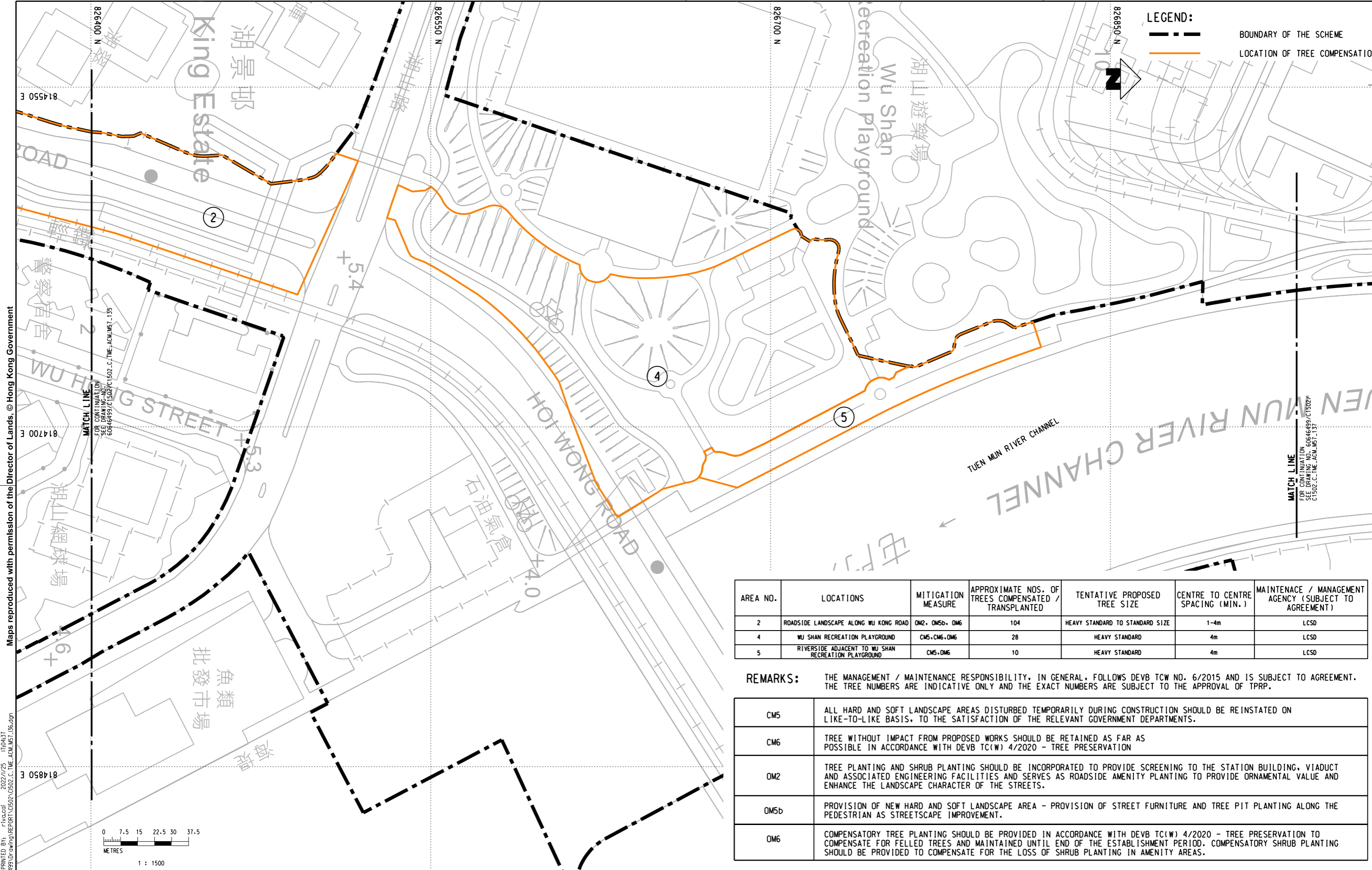
TITLE

C1502
 TUEN MUN SOUTH EXTENSION
 TREE COMPENSATION (SHEET 1 OF 5)

SCALE 1 : 1500 (A3)

FIGURE NO. C1502/C/TME/ACM/M57/135

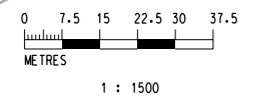
REV. A



LEGEND:
 - - - BOUNDARY OF THE SCHEME
 — LOCATION OF TREE COMPENSATION

Maps reproduced with permission of the Director of Lands, © Hong Kong Government

P:\PROJECTS\6064699\ACM_ADMIN\PLT_DRIVER\A3_COLOUR.dwg
 DATE: 2022/7/25
 PLOT DRW: P:\PROJECTS\6064699\ACM_ADMIN\PLT_DRIVER\A3_COLOUR.dwg
 MODELNAME: P:\PROJECTS\6064699\ACM_ADMIN\PLT_DRIVER\A3_COLOUR.dwg
 FILENAME: P:\PROJECTS\6064699\ACM_ADMIN\PLT_DRIVER\A3_COLOUR.dwg



AREA NO.	LOCATIONS	MITIGATION MEASURE	APPROXIMATE NOS. OF TREES COMPENSATED / TRANSPLANTED	TENTATIVE PROPOSED TREE SIZE	CENTRE TO CENTRE SPACING (MIN.)	MAINTENANCE / MANAGEMENT AGENCY (SUBJECT TO AGREEMENT)
2	ROADSIDE LANDSCAPE ALONG WU KONG ROAD	OM2, OM5b, OM6	104	HEAVY STANDARD TO STANDARD SIZE	1-4m	LCSD
4	WU SHAN RECREATION PLAYGROUND	CM5, CM6, OM6	28	HEAVY STANDARD	4m	LCSD
5	RIVERSIDE ADJACENT TO WU SHAN RECREATION PLAYGROUND	CM5, OM6	10	HEAVY STANDARD	4m	LCSD

REMARKS: THE MANAGEMENT / MAINTENANCE RESPONSIBILITY, IN GENERAL, FOLLOWS DEVB TCW NO. 6/2015 AND IS SUBJECT TO AGREEMENT. THE TREE NUMBERS ARE INDICATIVE ONLY AND THE EXACT NUMBERS ARE SUBJECT TO THE APPROVAL OF TPRP.

CM5	ALL HARD AND SOFT LANDSCAPE AREAS DISTURBED TEMPORARILY DURING CONSTRUCTION SHOULD BE REINSTATED ON LIKE-TO-LIKE BASIS, TO THE SATISFACTION OF THE RELEVANT GOVERNMENT DEPARTMENTS.
CM6	TREE WITHOUT IMPACT FROM PROPOSED WORKS SHOULD BE RETAINED AS FAR AS POSSIBLE IN ACCORDANCE WITH DEVB TC(W) 4/2020 - TREE PRESERVATION
OM2	TREE PLANTING AND SHRUB PLANTING SHOULD BE INCORPORATED TO PROVIDE SCREENING TO THE STATION BUILDING, VIADUCT AND ASSOCIATED ENGINEERING FACILITIES AND SERVES AS ROADSIDE AMENITY PLANTING TO PROVIDE ORNAMENTAL VALUE AND ENHANCE THE LANDSCAPE CHARACTER OF THE STREETS.
OM5b	PROVISION OF NEW HARD AND SOFT LANDSCAPE AREA - PROVISION OF STREET FURNITURE AND TREE PIT PLANTING ALONG THE PEDESTRIAN AS STREETScape IMPROVEMENT.
OM6	COMPENSATORY TREE PLANTING SHOULD BE PROVIDED IN ACCORDANCE WITH DEVB TC(W) 4/2020 - TREE PRESERVATION TO COMPENSATE FOR FELLED TREES AND MAINTAINED UNTIL END OF THE ESTABLISHMENT PERIOD. COMPENSATORY SHRUB PLANTING SHOULD BE PROVIDED TO COMPENSATE FOR THE LOSS OF SHRUB PLANTING IN AMENITY AREAS.

REV	DESCRIPTION	BY	DATE	APPROVED	REV	DESCRIPTION	BY	DATE	APPROVED

DRAWN: []
 DESIGNED: []
 CHECKED: []
 APPROVED: []
 DATE: []

DO NOT SCALE DRAWINGS. ALL DIMENSIONS SHALL BE VERIFIED ON SITE.
 © MTR CORPORATION LIMITED 2008 COPYRIGHT IN RESPECT OF THIS DRAWING / DOCUMENT IS OWNED BY THE MTR CORPORATION LIMITED OF HONG KONG. NO REPRODUCTION OF THE DRAWING / DOCUMENT OR ANY PART BY WHATEVER MEANS IS PERMITTED WITHOUT THE PRIOR WRITTEN CONSENT OF THE MTR CORPORATION LIMITED.

MTR
 TUEN MUN SOUTH EXTENSION
 ORIGINATOR
AECOM

CADD REF. C1502_C/TME/ACM/M57_136.dgn

TITLE
C1502
 TUEN MUN SOUTH EXTENSION
 TREE COMPENSATION (SHEET 2 OF 5)

SCALE 1 : 1500 (A3) FIGURE NO. C1502/C/TME/ACM/M57/136 REV. A



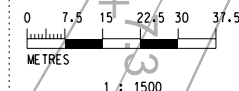
LEGEND:
 - - - BOUNDARY OF THE SCHEME
 — LOCATION OF TREE COMPENSATION

Maps reproduced with permission of the Director of Lands, © Hong Kong Government

AREA NO.	LOCATIONS	MITIGATION MEASURE	APPROXIMATE NOS. OF TREES COMPENSATED / TRANSPLANTED	TENTATIVE PROPOSED TREE SIZE	CENTRE TO CENTRE SPACING (MIN.)	MAINTENANCE / MANAGEMENT AGENCY (SUBJECT TO AGREEMENT)
6	A16 STATION	CM1, OM2, OM5b, OM6	53	HEAVY STANDARD	4m	MTR / TO BE CONFIRMED

REMARKS: THE MANAGEMENT / MAINTENANCE RESPONSIBILITY, IN GENERAL, FOLLOWS DEVB TCW NO. 6/2015 AND IS SUBJECT TO AGREEMENT. THE TREE NUMBERS ARE INDICATIVE ONLY AND THE EXACT NUMBERS ARE SUBJECT TO THE APPROVAL OF TRPP.

CM1	TREES UNAVOIDABLY AFFECTED BY THE WORKS SHOULD BE TRANSPLANTED AS FAR AS POSSIBLE IN ACCORDANCE WITH DEVB TC(W) 4/2020 - TREE PRESERVATION.
OM2	TREE PLANTING AND SHRUB PLANTING SHOULD BE INCORPORATED TO PROVIDE SCREENING TO THE STATION BUILDING, VIADUCT AND ASSOCIATED ENGINEERING FACILITIES AND SERVES AS ROADSIDE AMENITY PLANTING TO PROVIDE ORNAMENTAL VALUE AND ENHANCE THE LANDSCAPE CHARACTER OF THE STREETS.
OM5b	PROVISION OF NEW HARD AND SOFT LANDSCAPE AREA - PROVISION OF STREET FURNITURE AND TREE PIT PLANTING ALONG THE PEDESTRIAN AS STREETScape IMPROVEMENT.
OM6	COMPENSATORY TREE PLANTING SHOULD BE PROVIDED IN ACCORDANCE WITH DEVB TC(W) 4/2020 - TREE PRESERVATION TO COMPENSATE FOR FELLED TREES AND MAINTAINED UNTIL END OF THE ESTABLISHMENT PERIOD. COMPENSATORY SHRUB PLANTING SHOULD BE PROVIDED TO COMPENSATE FOR THE LOSS OF SHRUB PLANTING IN AMENITY AREAS.



P:\PROJECTS\6064699\CAD_ADMIN\PLT_DRIVER\A3_COLOUR.plt
 PRINTED BY: rfvccoc
 P:\PROJECTS\6064699\REPORT\REPORT_C1502_C.TME_ACM.M57.137.dgn
 16:00:47
 2022/7/25
 MODELNAME:
 FILENAME:

REV	DESCRIPTION	BY	DATE	APPROVED	REV	DESCRIPTION	BY	DATE	APPROVED

DRAWN	
DESIGNED	
CHECKED	
APPROVED	
DATE	

MTR

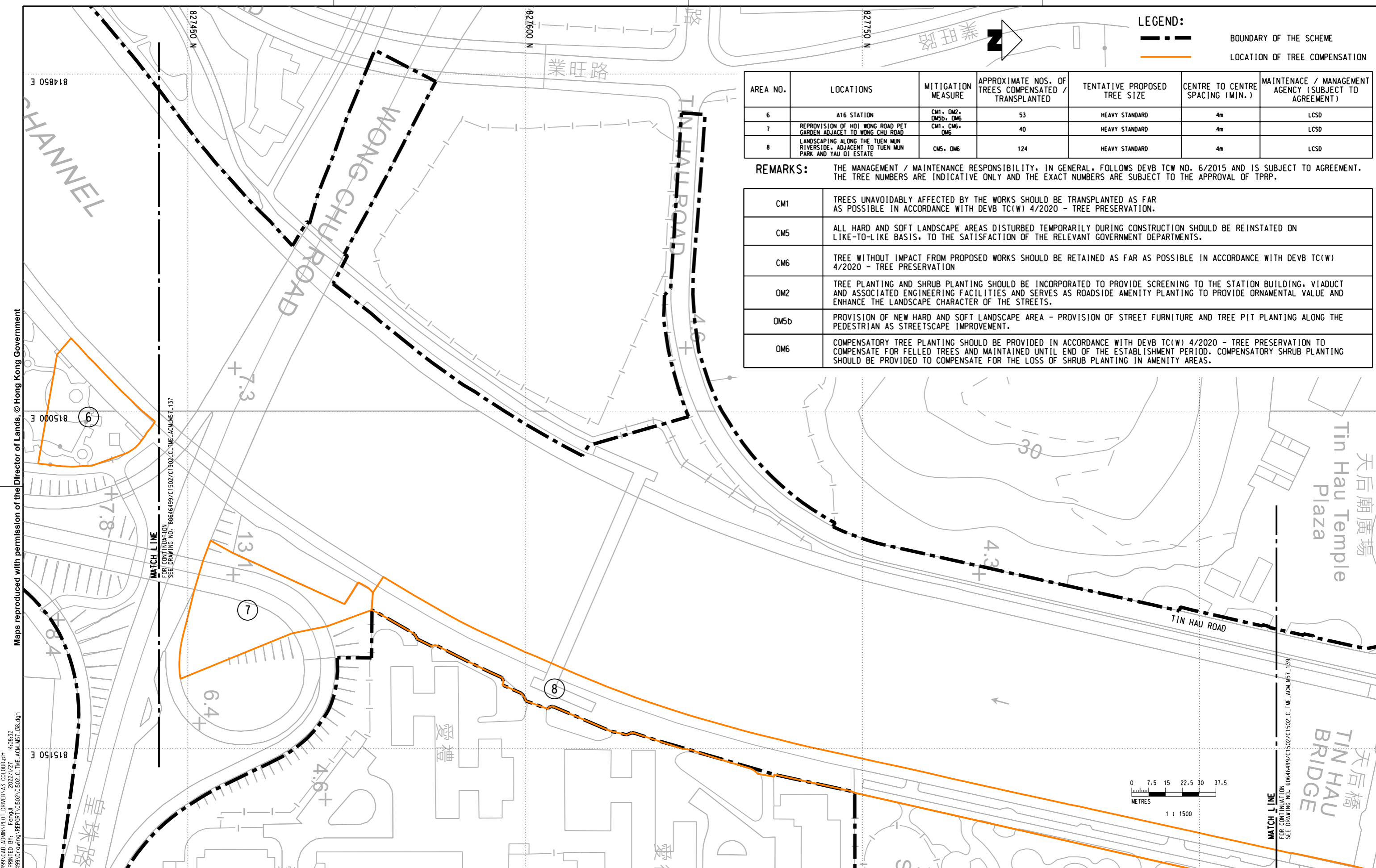
TUEN MUN SOUTH EXTENSION

ORIGINATOR

AECOM

CADD REF. C1502_C.TME_ACM.M57.137.dgn

TITLE	C1502 TUEN MUN SOUTH EXTENSION TREE COMPENSATION (SHEET 3 OF 5)
SCALE	1 : 1500 (A3)
FIGURE NO.	C1502/C/TME/ACM/M57/137
REV.	A



LEGEND:
 - - - BOUNDARY OF THE SCHEME
 ——— LOCATION OF TREE COMPENSATION

AREA NO.	LOCATIONS	MITIGATION MEASURE	APPROXIMATE NOS. OF TREES COMPENSATED / TRANSPLANTED	TENTATIVE PROPOSED TREE SIZE	CENTRE TO CENTRE SPACING (MIN.)	MAINTENANCE / MANAGEMENT AGENCY (SUBJECT TO AGREEMENT)
6	A16 STATION	CM1, OM2, OM5b, OM6	53	HEAVY STANDARD	4m	LCSD
7	REPROVISION OF HOI WONG ROAD PET GARDEN ADJACENT TO WONG CHU ROAD	CM1, CM6, OM6	40	HEAVY STANDARD	4m	LCSD
8	LANDSCAPING ALONG THE TUEN MUN RIVERSIDE, ADJACENT TO TUEN MUN PARK AND YAU OI ESTATE	CM5, OM6	124	HEAVY STANDARD	4m	LCSD

REMARKS: THE MANAGEMENT / MAINTENANCE RESPONSIBILITY, IN GENERAL, FOLLOWS DEVB TCW NO. 6/2015 AND IS SUBJECT TO AGREEMENT. THE TREE NUMBERS ARE INDICATIVE ONLY AND THE EXACT NUMBERS ARE SUBJECT TO THE APPROVAL OF TPRP.

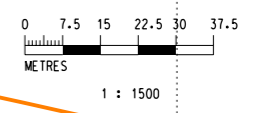
CM1	TREES UNAVOIDABLY AFFECTED BY THE WORKS SHOULD BE TRANSPLANTED AS FAR AS POSSIBLE IN ACCORDANCE WITH DEVB TC(W) 4/2020 - TREE PRESERVATION.
CM5	ALL HARD AND SOFT LANDSCAPE AREAS DISTURBED TEMPORARILY DURING CONSTRUCTION SHOULD BE REINSTATED ON LIKE-TO-LIKE BASIS, TO THE SATISFACTION OF THE RELEVANT GOVERNMENT DEPARTMENTS.
CM6	TREE WITHOUT IMPACT FROM PROPOSED WORKS SHOULD BE RETAINED AS FAR AS POSSIBLE IN ACCORDANCE WITH DEVB TC(W) 4/2020 - TREE PRESERVATION
OM2	TREE PLANTING AND SHRUB PLANTING SHOULD BE INCORPORATED TO PROVIDE SCREENING TO THE STATION BUILDING, VIADUCT AND ASSOCIATED ENGINEERING FACILITIES AND SERVES AS ROADSIDE AMENITY PLANTING TO PROVIDE ORNAMENTAL VALUE AND ENHANCE THE LANDSCAPE CHARACTER OF THE STREETS.
OM5b	PROVISION OF NEW HARD AND SOFT LANDSCAPE AREA - PROVISION OF STREET FURNITURE AND TREE PIT PLANTING ALONG THE PEDESTRIAN AS STREETSCAPE IMPROVEMENT.
OM6	COMPENSATORY TREE PLANTING SHOULD BE PROVIDED IN ACCORDANCE WITH DEVB TC(W) 4/2020 - TREE PRESERVATION TO COMPENSATE FOR FELLED TREES AND MAINTAINED UNTIL END OF THE ESTABLISHMENT PERIOD. COMPENSATORY SHRUB PLANTING SHOULD BE PROVIDED TO COMPENSATE FOR THE LOSS OF SHRUB PLANTING IN AMENITY AREAS.

Maps reproduced with permission of the Director of Lands, © Hong Kong Government

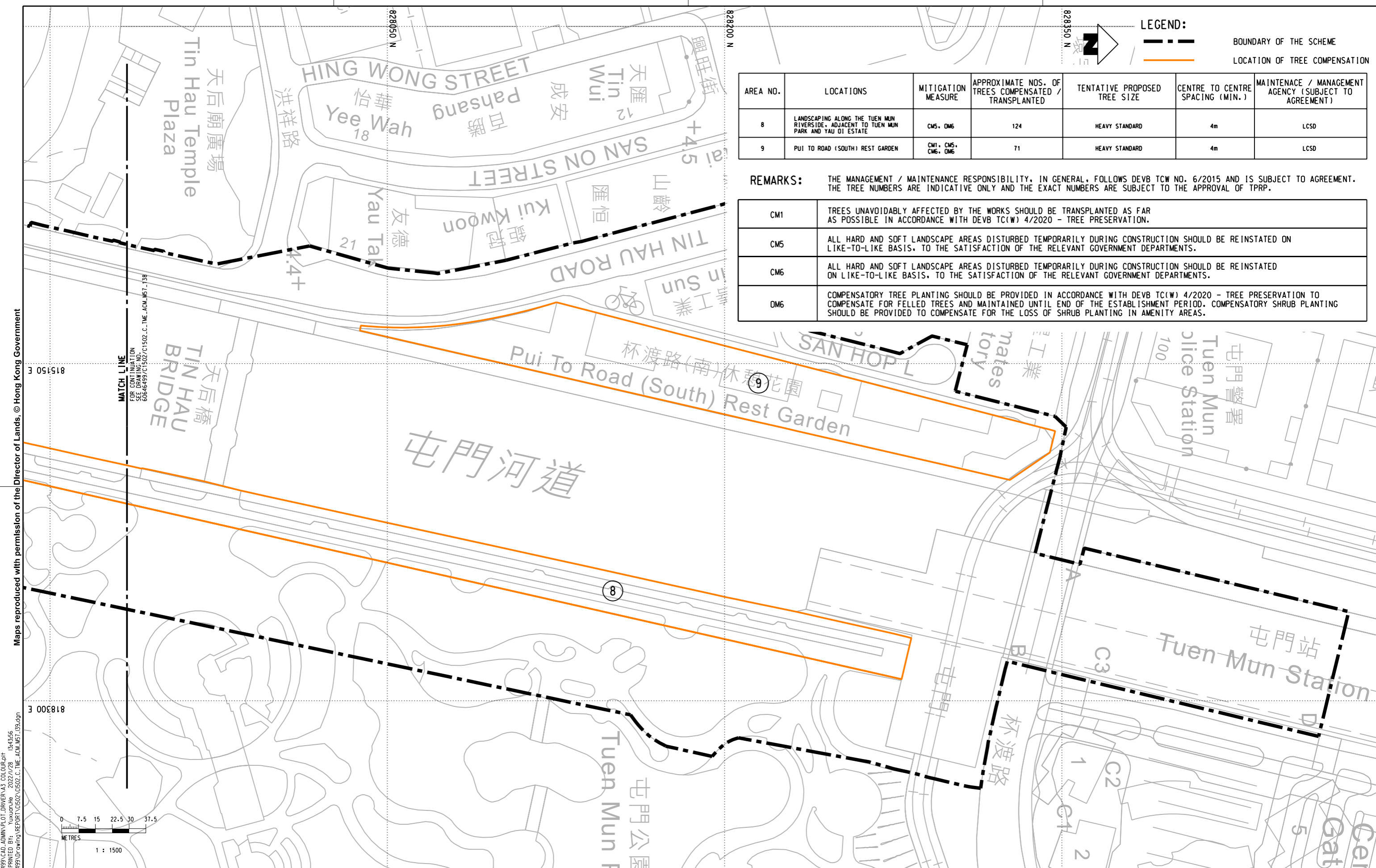
P:\PROJECTS\60646499\ACM\ADMIN\PLT_DRIVER\A3_COLOUR.dwg
 DRAWN BY: FENGJI
 PRINTED BY: FENGJI
 P:\PROJECTS\60646499\REPORT\C1502\0502_C.TME_ACM_M57_138.dgn
 14.08.22

MATCH LINE
 FOR CONTINUATION
 SEE DRAWING NO. 60646499/C1502/0502_C.TME_ACM_M57_137

MATCH LINE
 FOR CONTINUATION
 SEE DRAWING NO. 60646499/C1502/0502_C.TME_ACM_M57_139



DRAWN: [] DESIGNED: [] CHECKED: [] APPROVED: [] DATE: []								TUEN MUN SOUTH EXTENSION				TITLE C1502 TUEN MUN SOUTH EXTENSION TREE COMPENSATION (SHEET 4 OF 5)			
								ORIGINATOR AECOM				SCALE 1 : 1500 (A3)			
				CADD REF. C1502_C.TME_ACM_M57_138.dgn				FIGURE NO. C1502/C/TME/ACM/M57/138				REV. A			
REV	DESCRIPTION	BY	DATE	APPROVED	REV	DESCRIPTION	BY	DATE	APPROVED	REV	DESCRIPTION	BY	DATE	APPROVED	



LEGEND:
 - - - - - BOUNDARY OF THE SCHEME
 ———— LOCATION OF TREE COMPENSATION

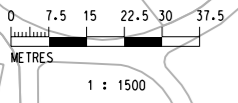
AREA NO.	LOCATIONS	MITIGATION MEASURE	APPROXIMATE NOS. OF TREES COMPENSATED / TRANSPLANTED	TENTATIVE PROPOSED TREE SIZE	CENTRE TO CENTRE SPACING (MIN.)	MAINTENANCE / MANAGEMENT AGENCY (SUBJECT TO AGREEMENT)
8	LANDSCAPING ALONG THE TUEN MUN RIVERSIDE, ADJACENT TO TUEN MUN PARK AND YAU OI ESTATE	CM5, OM6	124	HEAVY STANDARD	4m	LCSO
9	PUI TO ROAD (SOUTH) REST GARDEN	CM1, CM5, CM6, OM6	71	HEAVY STANDARD	4m	LCSO

REMARKS: THE MANAGEMENT / MAINTENANCE RESPONSIBILITY, IN GENERAL, FOLLOWS DEVB TCW NO. 6/2015 AND IS SUBJECT TO AGREEMENT. THE TREE NUMBERS ARE INDICATIVE ONLY AND THE EXACT NUMBERS ARE SUBJECT TO THE APPROVAL OF TPRP.

CM1	TREES UNAVOIDABLY AFFECTED BY THE WORKS SHOULD BE TRANSPLANTED AS FAR AS POSSIBLE IN ACCORDANCE WITH DEVB TC(W) 4/2020 - TREE PRESERVATION.
CM5	ALL HARD AND SOFT LANDSCAPE AREAS DISTURBED TEMPORARILY DURING CONSTRUCTION SHOULD BE REINSTATED ON LIKE-TO-LIKE BASIS, TO THE SATISFACTION OF THE RELEVANT GOVERNMENT DEPARTMENTS.
CM6	ALL HARD AND SOFT LANDSCAPE AREAS DISTURBED TEMPORARILY DURING CONSTRUCTION SHOULD BE REINSTATED ON LIKE-TO-LIKE BASIS, TO THE SATISFACTION OF THE RELEVANT GOVERNMENT DEPARTMENTS.
OM6	COMPENSATORY TREE PLANTING SHOULD BE PROVIDED IN ACCORDANCE WITH DEVB TC(W) 4/2020 - TREE PRESERVATION TO COMPENSATE FOR FELLED TREES AND MAINTAINED UNTIL END OF THE ESTABLISHMENT PERIOD. COMPENSATORY SHRUB PLANTING SHOULD BE PROVIDED TO COMPENSATE FOR THE LOSS OF SHRUB PLANTING IN AMENITY AREAS.

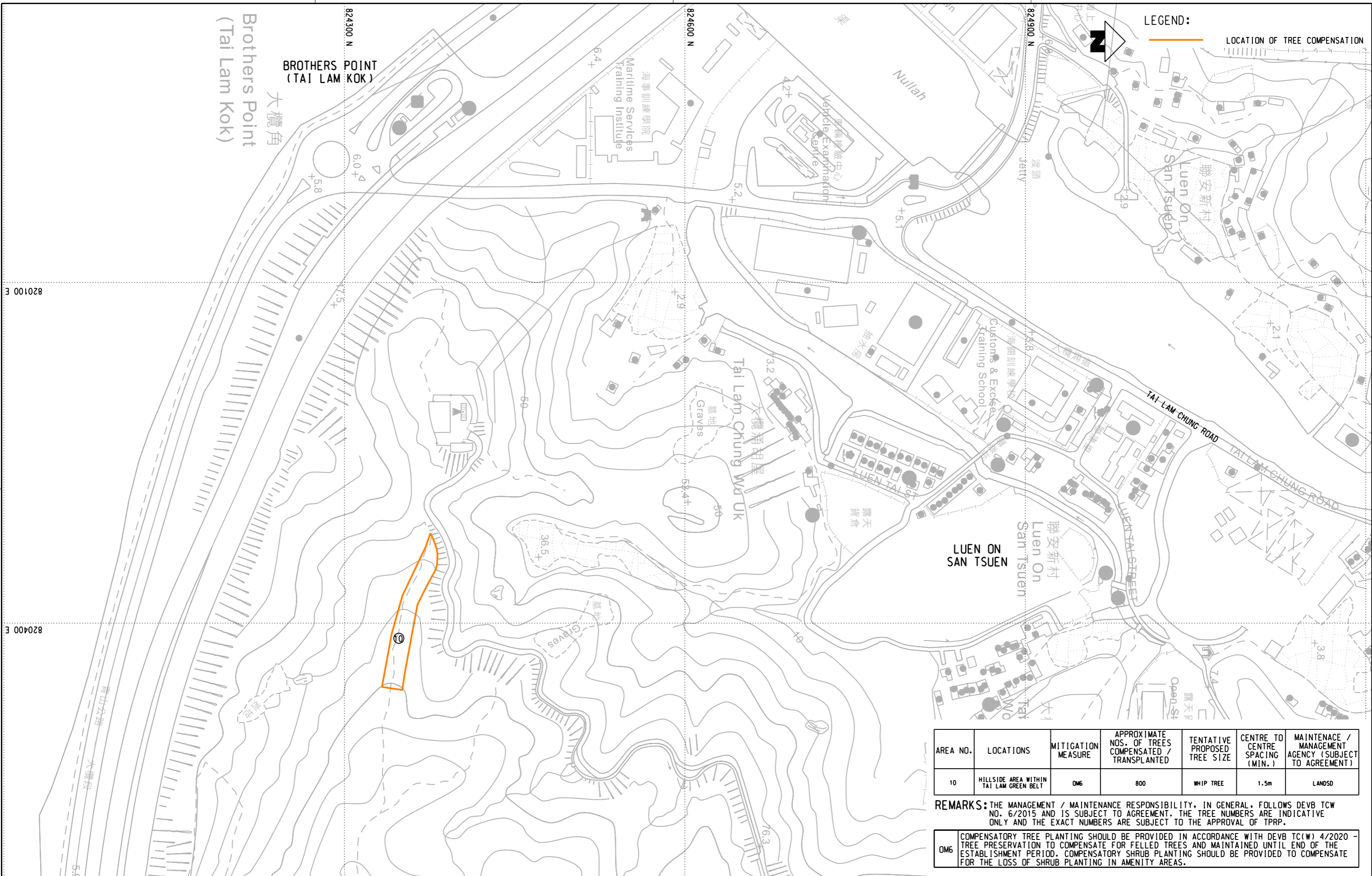
Maps reproduced with permission of the Director of Lands, © Hong Kong Government

P:\PROJECTS\6064699\CAD_ADMIN\PLT_DRIVER\3_COLOUR.plt
 PRINTED BY: alexander.ho_2022/7/28
 P:\PROJECTS\6064699\drawing\REPORT\C1502\0502_C_TME_ACM_M57_139.dgn
 MODEL NAME:
 FILE NAME:



REV	DESCRIPTION	BY	DATE	APPROVED	REV	DESCRIPTION	BY	DATE	APPROVED

DRAWN DESIGNED CHECKED APPROVED DATE	 TUEN MUN SOUTH EXTENSION 	TITLE C1502 TUEN MUN SOUTH EXTENSION TREE COMPENSATION (5 OF 5)
DO NOT SCALE DRAWINGS. ALL DIMENSIONS SHALL BE VERIFIED ON SITE. © MTR CORPORATION LIMITED 2008 COPYRIGHT IN RESPECT OF THIS DRAWING / DOCUMENT IS OWNED BY THE MTR CORPORATION LIMITED OF HONG KONG. NO REPRODUCTION OF THE DRAWING / DOCUMENT OR ANY PART BY WHATEVER MEANS IS PERMITTED WITHOUT THE PRIOR WRITTEN CONSENT OF THE MTR CORPORATION LIMITED.	ORIGINATOR AECOM	SCALE 1 : 1500 (A3)
CADD REF. C1502_C_TME_ACM_M57_139.dgn	FIGURE NO. C1502/C/TME/ACM/M57/139	REV. A



LEGEND:
 LOCATION OF TREE COMPENSATION

AREA NO.	LOCATIONS	MITIGATION MEASURE	APPROXIMATE NOS. OF TREES COMPENSATED / TRANSPLANTED	TENTATIVE PROPOSED TREE SIZE	CENTRE TO CENTRE SPACING (MIN.)	MAINTENANCE / MANAGEMENT AGENCY (SUBJECT TO AGREEMENT)
10	HILLSIDE AREA WITHIN TAI LAM GREEN BELT	OM6	800	WHIP TREE	1.5m	LANDSD

REMARKS: THE MANAGEMENT / MAINTENANCE RESPONSIBILITY, IN GENERAL, FOLLOWS DEVB TCW NO. 6/2015 AND IS SUBJECT TO AGREEMENT. THE TREE NUMBERS ARE INDICATIVE ONLY AND THE EXACT NUMBERS ARE SUBJECT TO THE APPROVAL OF TPRP.

OM6 COMPENSATORY TREE PLANTING SHOULD BE PROVIDED IN ACCORDANCE WITH DEVB TC(W) 4/2020 - TREE PRESERVATION TO COMPENSATE FOR FELLED TREES AND MAINTAINED UNTIL END OF THE ESTABLISHMENT PERIOD. COMPENSATORY SHRUB PLANTING SHOULD BE PROVIDED TO COMPENSATE FOR THE LOSS OF SHRUB PLANTING IN AMENITY AREAS.

REV	DESCRIPTION	BY	DATE	APPROVED	REV	DESCRIPTION	BY	DATE	APPROVED

DRAWN: []
 DESIGNED: []
 CHECKED: []
 APPROVED: []
 DATE: []

DO NOT SCALE DRAWINGS. ALL DIMENSIONS SHALL BE VERIFIED ON SITE.
 © MTR CORPORATION LIMITED 2008 COPYRIGHT IN RESPECT OF THIS DRAWING / DOCUMENT IS OWNED BY THE MTR CORPORATION LIMITED OF HONG KONG. NO REPRODUCTION OF THE DRAWING / DOCUMENT OR ANY PART BY WHATEVER MEANS IS PERMITTED WITHOUT THE PRIOR WRITTEN CONSENT OF THE MTR CORPORATION LIMITED.

MTR
 TUEN MUN SOUTH EXTENSION
 ORIGINATOR
AECOM

CADD REF. C1502_C_TME_ACM_M57_140.dgn

TITLE
C1502
 TUEN MUN SOUTH EXTENSION
 TREE COMPENSATION - TAI LAM GREEN BELT

SCALE 1 : 3000 (A3)
 FIGURE NO. C1502/C/TME/ACM/M57/140
 REV. A

Appendix 9.1 Tree Assessment Schedule (Group Survey)

Tree Group No.	Total	Species		Tree Measurements			App. Quantity of the group	Amenity Value	Form	Health Condition	Structural Condition	Suitability for Transplanting		Conservation Status	Recommendation (Retain/ Affected)			Maintenance department to provide comments on TPRP		Justification	Additional Remarks
		Scientific name	Chinese Name	Height (m)	DBH (mm)	Crown Spread (m)		(High/ Medium/ Low)				(High/ Medium / Low)	Remarks		Retain %	Retain	Affected	Before	After		
TG01	331	Acacia confusa	台灣相思	6-16	120-400	5-10	46	L	P-A	P-A	P-A	L	a, b, c, d, f	Nil	68	46	0	LCSD	LCSD	-	
		Aleurites moluccana	石栗	5-15	100-450	2-8	27	L	A-G	P-G	P-G	L	a, b, c, d, f, i	Nil		14	13	LCSD	LCSD	direct conflict with the proposed works/ works area	
		Archontophoenix alexandrae	假檳榔	8	200	2	2	L	A	P	A	L	a, f	Nil		0	2	LCSD	LCSD	direct conflict with the proposed works/ works area	
		Bauhinia spp.	羊蹄甲屬	2-5.5	95-230	2-5.5	9	L	P-A	P-A	P-A	L	a, f	Nil		0	9	LCSD	LCSD	direct conflict with the proposed works/ works area	
		Bauhinia variegata	宮粉羊蹄甲	3.5	115	2	1	L	A	P	A	L	a, f	Nil		0	1	LCSD	LCSD	direct conflict with the proposed works/ works area	
		Bauhinia x blakeana	洋紫荊	3.5-6	150-270	2-3.5	19	L-M	P-A	P-A	P-A	L	a, f	Nil		5	14	LCSD	LCSD	direct conflict with the proposed works/ works area	
		Bombax ceiba	木棉	10-12	200-250	4-5	5	L	P-A	A	A	L	a, b,	Nil		5	0	LCSD	LCSD	-	
		Casuarina equisetifolia	木麻黃	20	600	8	1	M	A	A	A	L	b, c, d, e, f, i	Nil		1	0	LCSD	LCSD	-	
		Cinnamomum camphora	樟樹	4.5-12	100-400	2-9	39	L-H	P-G	P-G	P-G	L	a, b, c, d, f, i	Nil		28	11	LCSD	LCSD	direct conflict with the proposed works/ works area	
		Delonix regia	鳳凰木	5-16	210-600	3-12	43	L-H	P-G	P-G	A	L	a, b, d, f	Nil		28	15	LCSD	LCSD	direct conflict with the proposed works/ works area	
		Ficus microcarpa	細葉榕	5-15	230-600	3-15	27	L-M	P-G	P-A	P-A	L	d, f	Nil		25	2	LCSD	LCSD	direct conflict with the proposed works/ works area	
		Ficus microcarpa	細葉榕	12-13	600-950	8-10	4	L-M	A	P-A	A	L	a, b, c, d, e, f, i	Nil		2	2	LCSD	LCSD	-	
		Ficus virens	黃葛樹	4-16	100-1000	4-15	13	L	A-G	A-G	P-A	L	a, d, f	dia>1m		12	1	LCSD	LCSD	Tree with DBH > 1m will not be affected by proposed works	
		Ficus variegata var. chlorocarpa	青果榕	4	100	4	1	L	A	A	G	L	a,	Nil		1	0	LCSD	LCSD	-	
		Grevillea robusta	銀樺	11	200	2	1	L	P	A	P	L	a, b, c, f	Nil		1	0	LCSD	LCSD	-	
		Koelreuteria bipinnata	欒樹	3-5.5	140-350	1-5	19	L-M	P-A	P-A	P-A	L	a, b, c, d, e, f	Nil		0	19	LCSD	LCSD	direct conflict with the proposed works/ works area	
		Lagerstroemia indica	紫薇	2.5-3.5	90-100	2.5-3	11	M	G	G	G	M	-	Cap.96		11	0	LCSD	LCSD	-	
		Liquidambar formosana	楓香	6-13	90-250	3-8	10	L	A-G	A	A	L	a, b	Nil		10	0	LCSD	LCSD	-	
		Livistona chinensis	蒲葵	2.5-6	150-200	4	2	L-M	A-G	G	A	M	-	Nil		2	0	LCSD	LCSD	-	
		Macaranga tanarius var. tomentosa	血桐	5	150	2.5	1	L	A	A	A	L	a, b	Nil		0	1	LCSD	LCSD	direct conflict with the proposed works/ works area	
Melaleuca cajuputi subsq.cumingiana	白千層	6.5-15	100-550	3-10	41	L-M	P-G	A	A	L	a, b, c, d, f	Nil	26	15	LCSD	LCSD	direct conflict with the proposed works/ works area				
Michelia x alba	白蘭	8.5	200	3	1	M	P	A	A	L	c, f	Cap.96	0	1	LCSD	LCSD	direct conflict with the proposed works/ works area				
Terminalia catappa	欖仁樹	5.5-6	90-100	2-3	3	L	P-A	A-G	A	L	a, f	Nil	3	0	LCSD	LCSD	-				
Thevetia peruviana	黃花夾竹桃	3	95-120	2	5	L	P-A	A	G	L	a, f	Nil	5	0	LCSD	LCSD	-				
TG02	158	Albizia lebbek	大葉合歡	3.5-12.5	95-600	3-15	20	M	P-A	P-A	A	L	d, e, f	Nil	66	14	6	LCSD	-	direct conflict with the proposed works/ works area	
		Aleurites moluccana	石栗	6-7	250-400	5-8	2	L	P-A	P-G	A	L	a, d, f	Nil		2		LCSD	-	direct conflict with the proposed works/ works area	
		Araucaria heterophylla	異葉南洋杉	16	450	6	1	L	G	A	A	L	a, d	Nil		1	0	LCSD	LCSD	-	
		Bauhinia x blakeana	洋紫荊	5-6	100-160	4-5	4	L	P-A	P-A	P	L	a, f	Nil		4	0	LCSD	LCSD	-	
		Bauhinia purpurea	紅花羊蹄甲	5-6	150-180	4-6	1	L	P-A	P-A	P	L	a, f	Nil		1	0	LCSD	LCSD	-	
		Bauhinia variegata	宮粉羊蹄甲	4-8	100-200	2-6	9	L	P-A	P-A	A	L	a, f	Nil		2	7	LCSD		direct conflict with the proposed works/ works area	
		Bombax ceiba	木棉	3-11	120-400	3-7	5	M	P-A	P-A	A	L	d, f	Nil		5	0	LCSD	LCSD	-	
		Delonix regia	鳳凰木	4-12	200-400	4-12	28	M	P-A	A	A	L	d, f	Nil		22	6	LCSD	LCSD	-	
		Celtis sinensis	朴樹	4.5-7	100-400	3-9	8	L-M	P-A	P-A	P-A	L	a, c, f	Nil		8	0	LCSD	LCSD	-	
		Ficus benjamina	垂葉榕	4-6	100-200	1-3	5	L	P-A	P-A	A	L	a, f	Nil		5	0	LCSD	LCSD	-	
		Ficus microcarpa	細葉榕	5-14	150-700	2.5-15	18	M	A-G	A-G	P-A	L	a, d, e, f	Nil		3	15	LCSD	-	direct conflict with the proposed works/ works area	
		Ficus religiosa	菩提樹	8-10	450-900	6-13	3	M	A	P-A	A	L	b, c, e	Nil		3	0	LCSD	LCSD	-	
		Ficus virens	黃葛樹	6	250	6	1	L	A	A	A	L	a, c	Nil		0	1	DSD	-	-	
		Grevillea robusta	銀樺	12-20	300	6	2	L	P-A	A	A	L	a, f	Nil		2	0	LCSD	LCSD	-	
		Hibiscus tiliaceus	黃槿	3-9	100-350	4-6	11	L	P	P	P	L	a, c, f, i	Nil		7	4	DSD	DSD	-	
		Livistona chinensis	蒲葵	5-20	200-250	3.5-4	15	L-M	P-A	G	A-G	L-M	-	Nil		15	0	LCSD	-	direct conflict with the proposed works/ works area	
		Macaranga tanarius var. tomentosa	血桐	2-5	130-180	3.5-7	4	L	P	A	P	L	a, c, f	Nil		4	0	DSD	DSD	-	
		Peltophorum pterocarpum	雙翼豆	5-15	150-850	8-12	7	L	P-G	P-G	P-A	L	a, c, d, e, f	Nil		2	5	LCSD	-	direct conflict with the proposed works/ works area	
		Phoenix roebelenii	日本葵	3	100	1.5	1	L	P-A	A	A	M	a, f	Nil		0	1	LCSD	-	direct conflict with the proposed works/ works area	
		Thevetia peruviana	黃花夾竹桃	3-4	100-160	3-4	6	L	P	P	P	L	a, c, f, i	Nil		6	0	DSD	DSD	-	
Wodyetia bifurcata	狐尾棕	3-5	60-150	2	7	L	P-A	G	A	M	a, f	Nil	2	5	LCSD	-	direct conflict with the proposed works/ works area				
TG03	49	Bauhinia spp.	羊蹄甲屬	6	300	6	1	L	P	P	A	L	a, b, c, f	Nil	0	0	1	Lands D	-	direct conflict with the proposed works/ works area	
		Bridelia tomentosa	土密樹	5	150	5	1	L	P	P	P	L	a, c, f	Nil		0	1	Lands D	-	direct conflict with the proposed works/ works area	
		Celtis sinensis	朴樹	6	500	6	1	M	A	A	A	L	b, c	Nil		0	1	Lands D	-	codominant trunks, wounded trunk, conflicts with chainlink fence	
		Ficus microcarpa	細葉榕	5	115	6	1	L	A	P	A	L	a, f	Nil		0	1	LandsD	-	low branching, conflicts with chainlink fence	
		Leucaena leucocephala	銀合歡	8	96-150	3-4	45	L	A	P	P	L	a, f, g	Nil		0	45	Lands D	-	direct conflict with the proposed works/ works area	
TG04	15	Acacia confusa	台灣相思	7.5-8.5	300-450	5.5-7	3	L	P-A	P-A	P-A	L	d, f	Nil	0	0	3	LCSD	LCSD	-	
		Albizia lebbek	大葉合歡	8.5	350	10	1	H	A	A	A	L	b, d	Nil		0	1	LCSD	LCSD	-	
		Bauhinia x blakeana	洋紫荊	8.5	300	6.5	1	L	A	P	A	L	a, f	Nil		0	1	LCSD	LCSD	-	
		Cinnamomum camphora	樟樹	9.5-10.5	380-430	7-8	2	M	P-A	P-A	A	L	b, c, d, f	Nil		0	2	LCSD	LCSD	-	
		Delonix regia	鳳凰木	6-8	300-630	6-12	8	M-H	P-G	A-G	A-G	L	b, d, f	Nil		0	8	LCSD	LCSD	-	
TG05	0	no trees located within TG05	-	-	-	-	-	-	-	-	-	-	-	-	-	-	-	-	-	-	-

Appendix 9.1 Tree Assessment Schedule (Group Survey)

Tree Group No.	Total	Species		Tree Measurements			App. Quantity of the group	Amenity Value	Form	Health Condition	Structural Condition	Suitability for Transplanting		Conservation Status	Recommendation (Retain/ Affected)			Maintenance department to provide comments on TPRP		Justification	Additional Remarks
		Scientific name	Chinese Name	Height (m)	DBH (mm)	Crown Spread (m)		(High/ Medium/ Low)				(High/ Medium / Low)	Remarks		Retain %	Retain	Affected	Before	After		
TG06	58	Albizia lebbek	大葉合歡	5-11	470-500	10.5-11	1	M-H	P-A	P-G	A	L	b, d, f	Nil	67	2	0	LCSD	LCSD	-	
		Callistemon viminalis	串錢柳	4-6	95-220	2.5-4.5	13	L-M	P-A	A-G	P-A	L	a, b, c, f	Nil		13	0	LCSD	LCSD	-	
		Cinnamomum camphora	樟樹	5	200	6	1	L	A	A	A	L	a	Nil		0	1	LCSD	LCSD	-	
		Delonix regia	鳳凰木	4-4.5	95-105	2.5-3.5	3	L	P-A	A	A	L	a, f	Nil		0	3	LCSD	LCSD	-	
		Ficus benjamina 'Variegata'	花葉垂榕	4-6	95-120	2-4	6	L-M	P-A	P-G	P-A	L	a, f	Nil		4	2	LCSD	LCSD	-	
		Lagerstroemia speciosa	大花紫薇	5-6.5	100-175	5-5.5	4	L-M	A	A-G	A-G	L-M	a	Cap.96		1	3	LCSD	LCSD	-	
		Melaleuca bracteata 'Revolution Gold'	黃金串錢柳	7.5-10.5	95-230	1-6.5	19	L	P-A	P-A	P-A	L	a, c, f	Nil		14	5	LCSD	-	direct conflict with the proposed works/ works area	
		Pandanus tectorius	露兜樹	2	160	2.5	1	L	A	A	A	L	a, b	Nil		1	0	LCSD	LCSD	-	
		Tabebuia argentea	銀鱗金鈴木	4.5-5.5	150-170	2.5-3	5	L	A-G	A-G	A	L-M	a	Nil		0	5	LCSD	LCSD	-	
		Tabebuia rosea	玫紅風鈴木	9-13	190-310	5-7	4	L-M	A-G	G	A	L-M	a	Nil		4	0	LCSD	LCSD	-	
TG07	98	Araucaria heterophylla	異葉南洋杉	5.5-13.5	120-280	2-5	18	L-M	P-G	P-G	P-G	L-M	a, b, c, d, f	Nil	0	0	18	LCSD	-	direct conflict with the proposed works/ works area	
		Bauhinia purpurea	紅花羊蹄甲	6.5-8	240	4-6.5	2	L	P-A	A	A	L	a, f	Nil		0	2	LCSD	-	direct conflict with the proposed works/ works area	
		Bauhinia spp.	羊蹄甲	5.5	200	3-4	2	L	P-A	P-A	A	L	a, f	Nil		0	2	LCSD	-	direct conflict with the proposed works/ works area	
		Bauhinia variegata	宮粉羊蹄甲	3-8	95-300	2-6.5	13	L	P-A	P-A	P-A	L	a, b, f	Nil		0	13	LCSD	-	direct conflict with the proposed works/ works area	
		Bauhinia variegata var. candida	白花羊蹄甲	6	100	4.5	1	L	A	A	A	L	a	Nil		0	1	LCSD	-	direct conflict with the proposed works/ works area	
		Bauhinia x blakeana	洋紫荊	7.5-8	150-250	5-6	2	L	P-A	A	P-A	L	a, f	Nil		0	2	LCSD	-	direct conflict with the proposed works/ works area	
		Caryata mitis	短穗魚尾葵	3-8	95-240	1.5-3.5	40	L	P-A	P-A	P-A	L	a, f	Nil		0	40	LCSD	-	direct conflict with the proposed works/ works area	
		Delonix regia	鳳凰木	3-7.5	100-350	2-5	6	L	P-A	A-G	P-G	L	a, d, f	Nil		0	6	LCSD	-	direct conflict with the proposed works/ works area	
		Michelia x alba	白蘭	9.5-10	150	4.5-5	2	L	A	A	A	L	a, i	Cap.96		0	2	LCSD	-	direct conflict with the proposed works/ works area	
		Plumeria rubra	雞蛋花	3.5-5.5	150-200	4-5	2	L	A	A	P-A	L	a, f	Nil		0	2	LCSD	-	direct conflict with the proposed works/ works area	
		Spathodea campanulata	火焰木	7.5-12	200-550	2.5-6.5	10	L	P-A	P-A	A	L	a, b, c, d, f	Nil		0	10	LCSD	-	direct conflict with the proposed works/ works area	
TG08	359	Acacia confusa	台灣相思	8-11	200-900	4-12	18	L	P-A	P-A	P-A	L	a, d, e, f	Nil	0	0	18	LCSD	-	direct conflict with the proposed works/ works area	
		Aleurites moluccana	石栗	4-6.5	200-400	3-5	14	L	P-A	P-A	P-A	L	a, b, c, d, f	Nil		0	14	LCSD	-	direct conflict with the proposed works/ works area	
		Archontophoenix alexandrae	假檳榔	3-9	100-250	1-4.5	20	L-M	P-G	P-G	P-G	L-M	a, f	Nil		0	20	LCSD	-	direct conflict with the proposed works/ works area	
		Araucaria heterophylla	異葉南洋杉	7-7.5	200-300	2.5-3	2	M	A-G	G	A	L	b, c, d	Nil		0	2	LCSD	-	direct conflict with the proposed works/ works area	
		Bauhinia x blakeana	洋紫荊	5-8.5	200-350	3-6	4	L	P-A	P-A	A	L	a, d, f	Nil		0	4	LCSD	-	direct conflict with the proposed works/ works area	
		Bischofia javanica	秋楓	6-11	170-400	3-7	16	M	P-A	P-A	A	L	e, f	Nil		0	16	LCSD	-	direct conflict with the proposed works/ works area	
		Bombax ceiba	木棉	7.5-9	300-400	3-6	3	L-M	P-A	A-G	A-G	L	a, b, d, f	Nil		0	3	LCSD	-	direct conflict with the proposed works/ works area	
		Callistemon viminalis	串錢柳	3-7	150-400	2-6	12	L	P-A	A	P-A	L	a, b, c, d, f	Nil		0	12	LCSD	-	direct conflict with the proposed works/ works area	
		Caryata mitis	短穗魚尾葵	3-5.5	150-300	2-3.5	6	L	P-A	A	P-A	L	a, f	Nil		0	6	LCSD	-	direct conflict with the proposed works/ works area	
		Casuarina equisetifolia	木麻黃	9-10.5	300-600	3.5-5	4	M	P-A	A-G	A	L	b, c, d, e, f, i	Nil		0	4	LCSD	-	direct conflict with the proposed works/ works area	
		Cinnamomum camphora	樟樹	5-10	150-650	3-8	18	L-M	A-G	A-G	A-G	L	a, b, c, d, i	Nil		0	18	LCSD	-	direct conflict with the proposed works/ works area	
		Citrus grandis	柚	5-6	150-200	3.5-4.5	2	L	P-A	A	A	L	a, f	Nil		0	2	LCSD	-	direct conflict with the proposed works/ works area	
		Duranta erecta 'Dwarf golden'	金連翹	3.5	150	3	1	M	A	A	A	L	c, i	Nil		0	1	LCSD	-	direct conflict with the proposed works/ works area	
		Ficus microcarpa	細葉榕	11	1140	16	1	M	G	A	G	M	d	dia>1m		0	1	LCSD	-	aerial roots attached to trunk	
		Ficus microcarpa	細葉榕	12	1000	10	1	M	G	G	A	M	d, i	dia>1m		0	1	LCSD	-	restricted roots,	
		Ficus microcarpa	細葉榕	5.5-12	350-950	5.5-16	11	L-M	P-G	P-A	P-A	L-M	a, d, e, f	Nil		0	11	LCSD	-	direct conflict with the proposed works/ works area	
		Juniperus chinensis Kaizuca	龍柏	4-7	150-250	2.5-4	6	L	P-A	P-A	A	L	a, c, d, f	Nil		0	6	LCSD	-	direct conflict with the proposed works/ works area	
		Lagerstroemia speciosa	大花紫薇	3-5.5	100-150	2.5-4.5	15	L-M	P-A	P-A	P-A	L-M	a, f	Cap.96		0	15	LCSD	-	direct conflict with the proposed works/ works area	
		Leucaena leucocephala	銀合歡	6-7	100-200	1.5-3	10	L	P	P	P	L	a, f, g	Nil		0	10	LCSD	-	direct conflict with the proposed works/ works area	
		Ligustrum sinensis	山指甲	3.5	150	2.5	1	L	P	A	A	L	a, f	Nil		0	1	LCSD	-	direct conflict with the proposed works/ works area	
		Liquidambar formosana	楓香	5.5-9	100-400	2-5	13	L-M	P-A	P-A	A	L	a, c, d, f	Nil		0	13	LCSD	-	direct conflict with the proposed works/ works area	
		Livistona chinensis	蒲葵	2-7	200-300	1.5-3.5	41	L-H	P-A	A-G	A-G	L-M	a, f	Nil		0	41	LCSD	-	direct conflict with the proposed works/ works area	
		Macaranga tanarius var. tomentosa	血桐	4-6	100-300	2-7	3	L	P	P-A	P-A	L	a, b, c, f	Nil		0	3	LCSD	-	direct conflict with the proposed works/ works area	
		Mangifera indica	芒果	5.5	150	4.5	1	L	A	A	A	L	a	Nil		0	1	LCSD	-	direct conflict with the proposed works/ works area	
Melaleuca cajuputi subsq.cumingiana	白千層	6.5-10	250-500	3-7	8	L	A	A	A	L	a, c, d	Nil	0	8	LCSD	-	direct conflict with the proposed works/ works area				
Melia azedarach	苦楝	10	900	9	1	L	A	A	A	L	a, b, c, d, e	Nil	0	1	LCSD	-	direct conflict with the proposed works/ works area				

Appendix 9.1 Tree Assessment Schedule (Group Survey)

Tree Group No.	Total	Species		Tree Measurements			App. Quantity of the group	Amenity Value	Form	Health Condition	Structural Condition	Suitability for Transplanting		Conservation Status	Recommendation (Retain/ Affected)			Maintenance department to provide comments on TPRP		Justification	Additional Remarks
		Scientific name	Chinese Name	Height (m)	DBH (mm)	Crown Spread (m)		(High/Medium/Low)				(High/Medium/Low)	Remarks		Retain %	Retain	Affected	Before	After		
		Michelia x alba	白蘭	5-8	300-400	4-6	2	L-M	A	G	A	L	a, b, c, d	Cap.96	0	2	LCSD	-	direct conflict with the proposed works/ works area		
		Pachira aquatica	馬拉巴栗	3-5.5	100-200	2.5-3	7	L	P-A	A	A	L	a, f	Nil	0	7	LCSD	-	direct conflict with the proposed works/ works area		
		Phoenix roebelenii	日本葵	2.5-3.5	100-150	2	22	L-M	A-G	A-G	A-G	L-M	a	Nil	0	22	LCSD	-	direct conflict with the proposed works/ works area		
		Platycladus orientalis	側柏	5.5	250	2.5	43	L	A	A	A	L	a	Nil	0	43	LCSD	-	direct conflict with the proposed works/ works area		
		Plumeria rubra	雞蛋花	5-5.5	150-300	3-4.5	7	M	P-A	A-G	A	L-M	f	Nil	0	7	LCSD	-	direct conflict with the proposed works/ works area		
		Roystonea regia	王棕	4.5-11.5	150-500	2.5-5.5	22	L-M	A-G	A-G	A-G	L-M	a, d	Nil	0	22	LCSD	-	direct conflict with the proposed works/ works area		
		Saraca asoka	無憂花	3.5	100-120	1.5-2	3	L	P-A	P-A	P-A	L	a, f	Nil	0	3	LCSD	-	direct conflict with the proposed works/ works area		
		Spathodea campanulata	火焰木	6-11	250-300	45	3	L-M	P-A	P-A	P-A	L	a, b, c, d, f	Nil	0	3	LCSD	-	direct conflict with the proposed works/ works area		
		Syzygium jambos	蒲桃	7	500	7	1	M	A	A	A	L	b, c, d, e, f, i	Nil	0	1	LCSD	-	direct conflict with the proposed works/ works area		
		Tabebuia chrysanthus	黃鐘木	3.5-4.5	100-120	1-2	2	L	A	A	A	L	a	Nil	0	2	LCSD	-	direct conflict with the proposed works/ works area		
		Thevetia peruviana	黃花夾竹桃	3.5	100-200	3-6	2	L	P	P	P	L	a, f	Nil	0	2	LCSD	-	direct conflict with the proposed works/ works area		
		Trachycarpus fortunei	棕櫚	3.5	100	1	1	L	A	A	A	L	a	Nil	0	1	LCSD	-	direct conflict with the proposed works/ works area		
		Wodyetia bifurcata	狐尾棕	6-10	250	4-5	8	M	G	G	G	M	-	Nil	0	8	LCSD	-	direct conflict with the proposed works/ works area		
		Xanthostemon chrysanthus	金蒲桃	5	90-110	2	4	L	A	A-G	A	M	a	Nil	0	4	LCSD	-	direct conflict with the proposed works/ works area		
TG09	21	Ficus microcarpa	細葉榕	6.5-9	100-700	7-9	3	L	P-A	P-A	A	L-M	a, d, f	Nil	0	3	LCSD	-	direct conflict with the proposed works/ works area		
		Livistona chinensis	蒲葵	3-4.5	180-200	3-3.5	3	M	A-G	G	G	M	-	Nil	0	3	LCSD	-	direct conflict with the proposed works/ works area		
		Magnolia grandiflora	荷花玉蘭	3-3.5	100	2	4	L	P-A	A	A	L	a, f	Cap.96	0	4	LCSD	-	direct conflict with the proposed works/ works area		
		Michelia x alba	白蘭	4.5-5	95-100	1.5	2	L	P	A	A	M	a, f	Cap.96	0	2	LCSD	-	direct conflict with the proposed works/ works area		
		Tabebuia chrysanthus	黃鐘木	4.5-5.5	95	2-3.5	9	L	A-G	A-G	A-G	M	a	Nil	0	9	LCSD	-	direct conflict with the proposed works/ works area		
TG10	52	Bombax ceiba	木棉	7.5	250	5.5	1	L	A	A	A	L	a, b	Nil	0	1	Lands D	-	direct conflict with the proposed works/ works area		
		Celtis sinensis	朴樹	7.5-10.5	200-400	5-7.5	3	L	P-A	P-A	P-A	L	a, d, f	Nil	0	3	Lands D	-	direct conflict with the proposed works/ works area		
		Ficus religiosa	菩提樹	8	640	8	1	L	A	A	P	L	a, d, f, i	Nil	0	1	Lands D	-	direct conflict with the proposed works/ works area		
		Leucaena leucocephala	銀合歡	4.5-12.5	95-360	3-7.5	43	L	P	P	P	L	a, f, g	Nil	0	43	Lands D	-	direct conflict with the proposed works/ works area		
		Macaranga tanarius var. tomentosa	血桐	2.5-6	140-300	3-6.5	3	L	P	P	P	L	a, b, f	Nil	0	3	Lands D	-	direct conflict with the proposed works/ works area		
		Sapium sebiferum	烏柏	13.5	360	7.5	1	L	P	P	A	L	a, c, d, f	Nil	0	1	Lands D	-	direct conflict with the proposed works/ works area		

Appendix 9.1 Tree Assessment Schedule (Group Survey)

Tree Group No.	Total	Species		Tree Measurements			App. Quantity of the group	Amenity Value	Form	Health Condition	Structural Condition	Suitability for Transplanting		Conservation Status	Recommendation (Retain/ Affected)			Maintenance department to provide comments on TPRP		Justification	Additional Remarks	
		Scientific name	Chinese Name	Height (m)	DBH (mm)	Crown Spread (m)		(High/Medium/Low)				(High/Medium/Low)	Remarks		Retain %	Retain	Affected	Before	After			
TG11	37	Acacia confusa	台灣相思	6-7	500-700	7	3	L	P	P	P	L	a, d, f	Nil	0	0	3	CEDD	-	direct conflict with the proposed works/ works area		
		Albizia lebbek	大葉合歡	8	400	8	1	M	G	G	G	L	b, d	Nil		0	1	CEDD	-	direct conflict with the proposed works/ works area		
		Bischofia javanica	秋楓	7	200	3	1	L	A	A	A	L	a, i	Nil		0	1	CEDD	-	direct conflict with the proposed works/ works area		
		Delonix regia	鳳凰木	3.5-5	115-170	2-4	11	L	A	A	A	M	a	Nil		0	11	CEDD	-	direct conflict with the proposed works/ works area		
		Leucaena leucocephala	銀合歡	7	200	6.5	1	L	P	P	P	L	a, f, g	Nil		0	1	CEDD	-	direct conflict with the proposed works/ works area		
		Liquidambar formosana	楓香	3.5-10	100-150	1.5-3	19	L	P-G	P-A	A	L-M	a, b, c, f	Nil		0	19	CEDD	-	direct conflict with the proposed works/ works area		
		Melia azedarach	苦楝	10	400	2	1	L	P	A	A	L	a, c, d, f	Nil		0	1	CEDD	-	direct conflict with the proposed works/ works area		
TG12	156	Celtis sinensis	朴樹	7	300	9	2	M	G	A	G	L	-	Nil	100	2	0	Lands D	-	-		
		Ficus microcarpa	細葉榕	5-6	200-300	6-7	1	L	A	P-A	A	L	a, f	Nil		1	0	Lands D	-	-		
		Ficus religiosa	菩提樹	7-11	400-900	4-10	2	M	A	A	A	L	d, i	Nil		2	0	Lands D	-	-		
		Leucaena leucocephala	銀合歡	3-8	100-400	2-6	113	L	P	P-A	P-A	L	a, d, f, g	Nil		113	0	Lands D	-	-		
		Macaranga tanarius var. tomentosa	血桐	6	447	8	2	L	P	A	A	L	a, d, f	Nil		2	0	Lands D	-	-		
		Roystonea regia	王棕	6-9	200-300	4-4.5	36	M	P-A	P-A	A	L-M	f	Nil		36	0	Lands D	-	-		
		Celtis sinensis	朴樹	5-7	200-470	4-8	3	M	P-G	A-G	P-A	L	d, f	Nil		3	0	Lands D	-	-		
TG13	41	Ficus religiosa	菩提樹	4-6	120-140	3-5	3	L	P	P	P	L	a, f	Nil	100	3	0	Lands D	-	-		
		Ficus superba	筆管榕	4-5	150-200	4	2	M	P	P	P	L	b, c, d, e, f	Nil		2	0	Lands D	-	-		
		Leucaena leucocephala	銀合歡	5-7	95-300	2-10	24	L	A	P-A	P	L	a, f, g	Nil		24	0	Lands D	-	-		
		Ligustrum sinensis	山指甲	3	100	2	1	L	P	P	P	L	a, f	Nil		1	0	Lands D	-	-		
		Melia azedarach	苦楝	7-8	300-400	8-10	8	L	A-G	A-G	A	L	a, b, c,	Nil		8	0	Lands D	-	-		
		Ficus microcarpa	細葉榕	4.5-6.5	250-450	5-7.5	8	L	P-A	P-A	A	L	a, d, f	Nil		0	8	Lands D	Lands D	-		
		Hibiscus tiliaceus	黃槿	4.5-8	230-420	4-6	8	L	P-A	P-A	P-A	L	a, d, f	Nil		4	4	Lands D	-	direct conflict with the proposed works/ works area		
TG14	22	Lagerstroemia speciosa	大花紫薇	4-5	100-200	4-5	3	L-M	A	A	A	L-M	a, b	Cap.96	32	2	1	Lands D	-	direct conflict with the proposed works/ works area		
		Mangifera indica	芒果	4-7	170-300	2-6	3	L	P-G	A	P-A	L	a, b, f, i	Nil		1	2	Lands D	Lands D	-		
TG15	470	Acacia confusa	台灣相思	4-14.5	100-500	1.5-12	310	L-M	P-A	P-A	P-A	L-M	a, d, f	Nil	66	234	76	LCSD	-	direct conflict with the proposed works/ works area		
		Aleurites moluccana	石栗	7.5	150	4	1	L	P	P	A	L	a, f	Nil		1	0	LCSD	LCSD	-		
		Bauhinia spp.	羊蹄甲	4-6	95-130	4-5.5	4	L	P	P	P	L	a, f	Nil		2	2	LCSD	LCSD	-		
		Bauhinia variegata	宮粉羊蹄甲	4-7	150-200	2-5.5	4	L	P-A	A	P-A	L	a, f	Nil		3	1	LCSD	-	direct conflict with the proposed works/ works area		
		Bauhinia x blakeana	洋紫荊	4-6.5	100-200	4.5-6.5	7	L	P-A	P-A	A	L	a, f	Nil		5	2	LCSD	-	direct conflict with the proposed works/ works area		
		Callistemon viminalis	串錢柳	4-12	100-300	2-6.5	6	L-M	P-A	P-A	P-A	L	a, b, c, f	Nil		5	1	LCSD	LCSD	-		
		Cassia siamea	鐵刀木	7.5-12.5	270-300	4-6.5	2	L	P-A	P-A	A	L	a, b, c, f	Nil		1	1	LCSD	-	direct conflict with the proposed works/ works area		
		Celtis sinensis	朴樹	4	120	3	1	L	P-A	A	A	L	a, f	Nil		0	1	LCSD	-	direct conflict with the proposed works/ works area		
		Cinnamomum burmanii	陰香	6	200-300	3-4	2	L	P-A	P-A	P-A	L	a, c, f	Nil		1	1	LCSD	LCSD	-		
		Cinnamomum camphora	樟樹	6.5-11.5	300-500	4-8	11	L	P-A	P-G	P-A	L	a, b, c, d, f	Nil		10	1	LCSD	-	direct conflict with the proposed works/ works area		
		Delonix regia	鳳凰木	6-10	200-400	3-8.5	15	L-M	P-A	P-G	P-A	L-M	a, b, d, f, i	Nil		8	7	LCSD	-	-		
		Eucalyptus tereticornis	細葉桉	10.5-13	430-440	6-7	2	L	P-A	P-A	A	L	a, b, d, f	Nil		2	0	LCSD	-	-		
		Ficus altissima	高山榕	4.5-6	100-300	2-6.5	11	L	P-A	P-A	P-A	L	a, f	Nil		0	11	LCSD	-	direct conflict with the proposed works/ works area		
		Ficus benjamina	垂葉榕	4.5-8	200-550	3-6.5	14	L	P-A	P-A	A	L	a, d, f	Nil		3	11	LCSD	LCSD	-		
		Ficus microcarpa	細葉榕	3.5-6.5	100-350	2.5-5	9	L	P-A	A	A	L	a, d, f	Nil		2	7	LCSD	-	direct conflict with the proposed works/ works area		
		Ficus religiosa	菩提樹	7	350	4.5	1	L	A	P	A	L	a, d, f	Nil		0	1	LCSD	LCSD	-		
		Ficus virens	大葉榕	6-15	200-800	2-8.5	6	L	P-A	P-A	A	L	a, d, f	Nil		5	1	LCSD	LCSD	-		
		Hibiscus tiliaceus	黃槿	6-9	200-400	3.5-4	3	L	P	A	P	L	a, d, f	Nil		3	0	LCSD	LCSD	-		
		Lagerstroemia speciosa	大花紫薇	5-10	140-400	3-7.5	34	L	P-G	P-A	P-A	L	a, b, d, f	Cap.96		7	27	LCSD	-	direct conflict with the proposed works/ works area		
		Liquidambar formosana	楓香	15	300	6	1	L	A	A	A	L	a, c, f	Nil		1	0	LCSD	LCSD	-		
		Livistona chinensis	蒲葵	3.5	250	1.5	1	H	G	G	G	H	-	Nil		1	0	LCSD	LCSD	-		
		Melaleuca cajuputi subsq.cumingiana	白千層	3.5-12.5	100-400	2-5.5	10	L-M	P-A	P-A	A	L-M	a, c, d, f	Nil		4	6	LCSD	-	direct conflict with the proposed works/ works area		
		Peltophorum pterocarpum	盾柱木	9-10.5	200-400	5-10	5	L	A	P-A	A	L	a, b, c, d, f	Nil		0	5	LCSD	-	direct conflict with the proposed works/ works area		
Syzygium jambos	蒲桃	4-7	100-200	2-6	10	L	P-A	P-A	P-A	L	a, f	Nil	3	7	LCSD	-	direct conflict with the proposed works/ works area					

Appendix 9.1 Tree Assessment Schedule (Group Survey)

Tree Group No.	Total	Species		Tree Measurements			App. Quantity of the group	Amenity Value	Form	Health Condition	Structural Condition	Suitability for Transplanting		Conservation Status	Recommendation (Retain/ Affected)			Maintenance department to provide comments on TPRP		Justification	Additional Remarks	
		Scientific name	Chinese Name	Height (m)	DBH (mm)	Crown Spread (m)		(High/Medium/Low)				(High/Medium/Low)	Remarks		Retain %	Retain	Affected	Before	After			
TG16	47	Hibiscus tiliaceus	黃槿	5-9.5	380-700	3-8.5	7	L	P-A	P-A	P-A	L	a, d, f	Nil	0	0	7	LCSD	-	direct conflict with the proposed works/ works area		
		Lagerstroemia speciosa	大花紫薇	4-8.5	120-300	3-8	26	L-M	P-A	P-A	P-A	L-M	a, b, f	Cap.96		0	26	LCSD	-	direct conflict with the proposed works/ works area		
		Plumeria rubra	雞蛋花	4-5.5	150-350	3-5.5	11	L-H	P-G	P-G	A	M	a, f	Nil		0	11	LCSD	-	direct conflict with the proposed works/ works area		
		Syagrus romanzoffiana	皇后葵	7.5	230	3.5	1	L	A	A	A	M	a	Nil		0	1	LCSD	-	direct conflict with the proposed works/ works area		
		Terminalia mantaly	小葉欖仁	4.5-9	95-200	2-6.5	2	L	A	A	A	M	a	Nil		0	2	LCSD	-	direct conflict with the proposed works/ works area		
TG17	192	Acacia confusa	台灣相思	8.5-10.5	600-800	4.5-5.5	2	L	A	P-A	P-A	L	a, e, f	Nil	20	2	0	LCSD	-	direct conflict with the proposed works/ works area		
		Albizia lebbek	大葉合歡	6.5-7	400-500	5-8	2	M	A	A	P-A	L	b, d, f	Nil		1	1	LCSD	-	direct conflict with the proposed works/ works area		
		Archontophoenix alexandrae	假檳榔	4-6	150-200	1.5-2	3	L-M	P-G	A	A	L-M	a, f	Nil		1	2	LCSD	-	direct conflict with the proposed works/ works area		
		Bischofia javanica	秋楓	7-7.5	300-320	3.5	2	L	P-A	A	A	L	a, f	Nil		2	0	LCSD	LCSD	-		
		Bridelia tomentosa Blume	土密樹	6.0	250	4	1	M	A	A	P	L	c	Nil		1	9	HD	LCSD	-		
		Callistemon viminalis	串錢柳	3-7	100-300	1.5-3	14	L-M	P-G	A	P-A	L-M	a, b, c, f	Nil		11	3	LCSD	-	direct conflict with the proposed works/ works area		
		Casuarina equisetifolia	木麻黃	6.5-11.5	300-550	2.5-4	5	L-M	P-G	A	A	L	a, b, c, d, f	Nil		2	3	LCSD	-	direct conflict with the proposed works/ works area		
		Celtis sinensis	朴樹	6-8	400-480	5.5-7	2	M	A	A	A	L	b, d	Nil		1	1	LCSD	-	direct conflict with the proposed works/ works area		
		Cinnamomum camphora	樟樹	5.5	200-300	3-6	2	L	P	P	A	L	a, b, c, f	Nil		0	2	LCSD	-	direct conflict with the proposed works/ works area		
		Delonix regia	鳳凰木	6-9.5	450-600	4.5-7	3	M	A	P-A	A	L	b, d, f	Nil		2	1	LCSD	-	direct conflict with the proposed works/ works area		
		Ficus microcarpa	細葉榕	9.5-11	750-900	7	2	M	A	A	A	L	d, e	Nil		1	1	LCSD	-	direct conflict with the proposed works/ works area		
		Ficus virens	大葉榕	7-10.5	300-950	3-11	4	L-M	P-A	A	A	L	a, d, e, f	Nil		0	4	LCSD	-	direct conflict with the proposed works/ works area		
		Grevillea robusta	銀樺	6.5-9.5	250-300	2.5-5.5	2	L	P-A	A	P-A	L	a, d, f	Nil		0	2	LCSD	-	direct conflict with the proposed works/ works area		
		Hibiscus tiliaceus	黃槿	7	600-700	4	2	L	P	P	P	L	a, d, f	Nil		2	0	LCSD	LCSD	-		
		Koelreuteria bipinnata	欒樹	5-5.5	270-290	3-5	2	M	A-G	A	A	L	b, c, d, i	Nil		0	2	LCSD	-	direct conflict with the proposed works/ works area		
		Ligustrum sinensis	山指甲	3.5-4.5	150-200	2-2.5	2	L	P	P-A	P-A	L	a, f	Nil		2	0	LCSD	LCSD	-		
		Livistona chinensis	蒲葵	2-9	200-400	1.5-3	9	L-M	A-G	P-G	A-G	L-M	a, d, f	Nil		1	8	LCSD	-	direct conflict with the proposed works/ works area		
		Macaranga tanarius var. tomentosa	血桐	5.5	300	4.5	2	L	P	P	P	L	a, b, f	Nil		1	1	LCSD	-	direct conflict with the proposed works/ works area		
		Melaleuca cajuputi subsq.cumingiana	白千層	5-12	100-700	2-7	108	L-M	P-G	P-G	P-G	L-H	a, c, d, f	Nil		0	108	LCSD	-	direct conflict with the proposed works/ works area		
		Phoenix roebelenii	日本葵	2	90-110	1.5	2	L	P	P	P	L	a, f	Nil		0	2	LCSD	-	direct conflict with the proposed works/ works area		
		Pinus massoniana	馬尾松	8-8.5	250-400	3	2	L	A	A	A	L	a, c, d, f	Nil		0	2	LCSD	-	direct conflict with the proposed works/ works area		
		Plumeria rubra	雞蛋花	3-4.5	100-200	2-3	5	L-M	P-A	P-A	P	L	a, f, i	Nil		5	0	LCSD	-	direct conflict with the proposed works/ works area		
		Roystonea regia	王棕	8	350	3	1	M	G	G	G	M	-	Nil		1	0	LCSD	-			
Schefflera actinophylla	傘樹	7.5	210	3	1	L	A	A	A	M	a	Nil	1	0	LCSD	-						
Senna siamea	鐵刀木	8.5-9	400-700	3-6.5	2	L	P	A	A	L	a, f	Nil	0	2	LCSD	-	direct conflict with the proposed works/ works area					
Terminalia catappa	欖仁樹	8	500	7	1	L	P	A	P	L	a, b, c, d, f	Nil	1	0	LCSD	LCSD	-					

Appendix 9.1 Tree Assessment Schedule (Group Survey)

Tree Group No.	Total	Species		Tree Measurements			App. Quantity of the group	Amenity Value	Form	Health Condition	Structural Condition	Suitability for Transplanting		Conservation Status	Recommendation (Retain/ Affected)			Maintenance department to provide comments on TPRP		Justification	Additional Remarks	
		Scientific name	Chinese Name	Height (m)	DBH (mm)	Crown Spread (m)		(High/Medium/Low)				(High/Medium/Low)	Remarks		Retain %	Retain	Affected	Before	After			
TG18	103	Archontophoenix alexandrae	假檳榔	7-10	150-250	3-4	8	L-M	P-A	A-G	A	L	a, f	Nil	58	4	4	LCSD	-	direct conflict with the proposed works/ works area		
		Casuarina equisetifolia	木麻黃	4-8	150-200	2-8	8	L	P-A	A-G	A	L	a, c	Nil		8	0	LCSD	LCSD	-		
		Cocos nucifera	椰子	5-7	220-280	4	4	L	A	P-A	A	L	a, f	Nil		4	0	LCSD	LCSD	-		
		Ficus microcarpa	細葉榕	4-10	300-800	6-10	24	M	P-G	A-G	A	L	d, e	Nil		24	0	LCSD	LCSD	-		
		Grevillea robusta	銀樺	5-8	95-200	4-5	12	L	P-A	P-A	A	L	a, f, i	Nil		5	7	LCSD	-	direct conflict with the proposed works/ works area		
		Hibiscus tiliaceus	黃槿	4-10	420-650	6-9	4	L	P	A	A	L	a, f, i	Nil		4	0	LCSD	LCSD	-		
		Juniperus chinensis Kaizuca	龍柏	2-4.5	100-150	1-2.5	9	L	P	A	P	L	a, f	Nil		9	0	LCSD	LCSD	-		
		Lagerstroemia speciosa	大花紫薇	4.5-6	108-213	3-4	5	L-M	P-A	P-A	P-A	L-M	a, b, f	Cap.96		0	5	LCSD	-	direct conflict with the proposed works/ works area		
		Osmanthus fragrans	桂花	3.5-4	150-180	3-3.5	2	L-M	A	P-A	A	M	a, f	Nil		0	2	LCSD	-	direct conflict with the proposed works/ works area		
		Plumeria rubra	雞蛋花	2.5-4.5	95-170	2.5-4	7	L-M	P-A	P-A	P-A	L-M	a, f	Nil		0	7	LCSD	-	direct conflict with the proposed works/ works area		
		Pongamia pinnata	水黃皮	6-8	180-280	5-7	3	L	P-A	A	A	L	a, f	Nil		0	3	LCSD	-	direct conflict with the proposed works/ works area		
		Ravenala madagascariensis	旅人蕉	2.5-5	190-320	2-3	7	L	P-A	P-A	A	L-M	a, f	Nil		0	7	LCSD	-	direct conflict with the proposed works/ works area		
		Terminalia mantaly	小葉欖仁	10-12	260-410	7-8	7	L	P-A	A	A	L	a, b, d, f, i	Nil		0	7	LCSD	-	direct conflict with the proposed works/ works area		
		Xanthostemon chrysanthus	金蒲桃	2.5-4	95-120	3	2	L-M	P-A	A	A	L	a, f	Nil		1	1	LCSD	LCSD	-		
		Melia azedarach	楝	4	220	4	1	L	P	A	A	L	-	Nil		1	0	LCSD	LCSD	-		

Remarks for Suitability for Transplanting

- (a) Low amenity value;
- (b) Irrecoverable form after transplanting (e.g. transplanting requires substantial crown and root pruning);
- (c) Low chance of survival upon transplanting;
- (d) Very large size (unless the feasibility to transplant has been considered financially reasonable and technically feasible during the feasibility stage);
- (e) With evidence of over-maturity and onset of senescence;
- (f) With poor health, structure or form (e.g. imbalanced form, leaning, with major cavity/cracks/splits); or cavity/cracks/splits); or
- (g) Undesirable species (e.g. *Leucaena leucocephala* which is an invasive exotic and self-seeding tree);
- (h) On steep slope.
- (i) trees grown under poor conditions which have limited the formation of proper root ball necessary for transplanting

Conservation status

Rare tree species listed in "Rare and Precious of Hong Kong"

(<http://herbarium.gov.hk/PublicationsPreface.aspx?BookNameId=1>) published by Agriculture, Fisheries and Conservation Department

Endangered plant species protected under the Protection of Endangered Species of Animals and Plants Ordinance (Cap. 586)

Tree species listed in the Forestry Regulations (Cap. 96A) under the Forests and Countryside Ordinance (Cap. 96)