

LEGEND:

- PROPOSED ALIGNMENT
- 300m ASSESSMENT AREA
- REPRESENTATIVE NOISE SENSITIVE RECEIVER - EXISTING
- REPRESENTATIVE NOISE SENSITIVE RECEIVER - PLANNED
- NOISE ASSESSMENT POINT

REMARKS:

1. NO MITIGATION MEASURE FOR RAILWAY NOISE IN THIS SHOWN AREA.
2. FST WOULD BE PROVIDED FOR THE WHOLE ALIGNMENT OF TME EXCEPT THE END-OF-TRACK OVERRUNS.



REV	DESCRIPTION	BY	DATE	APPROVED	REV	DESCRIPTION	BY	DATE	APPROVED

DRAWN	
DESIGNED	
CHECKED	
APPROVED	
DATE	

MTR

TUEN MUN SOUTH EXTENSION

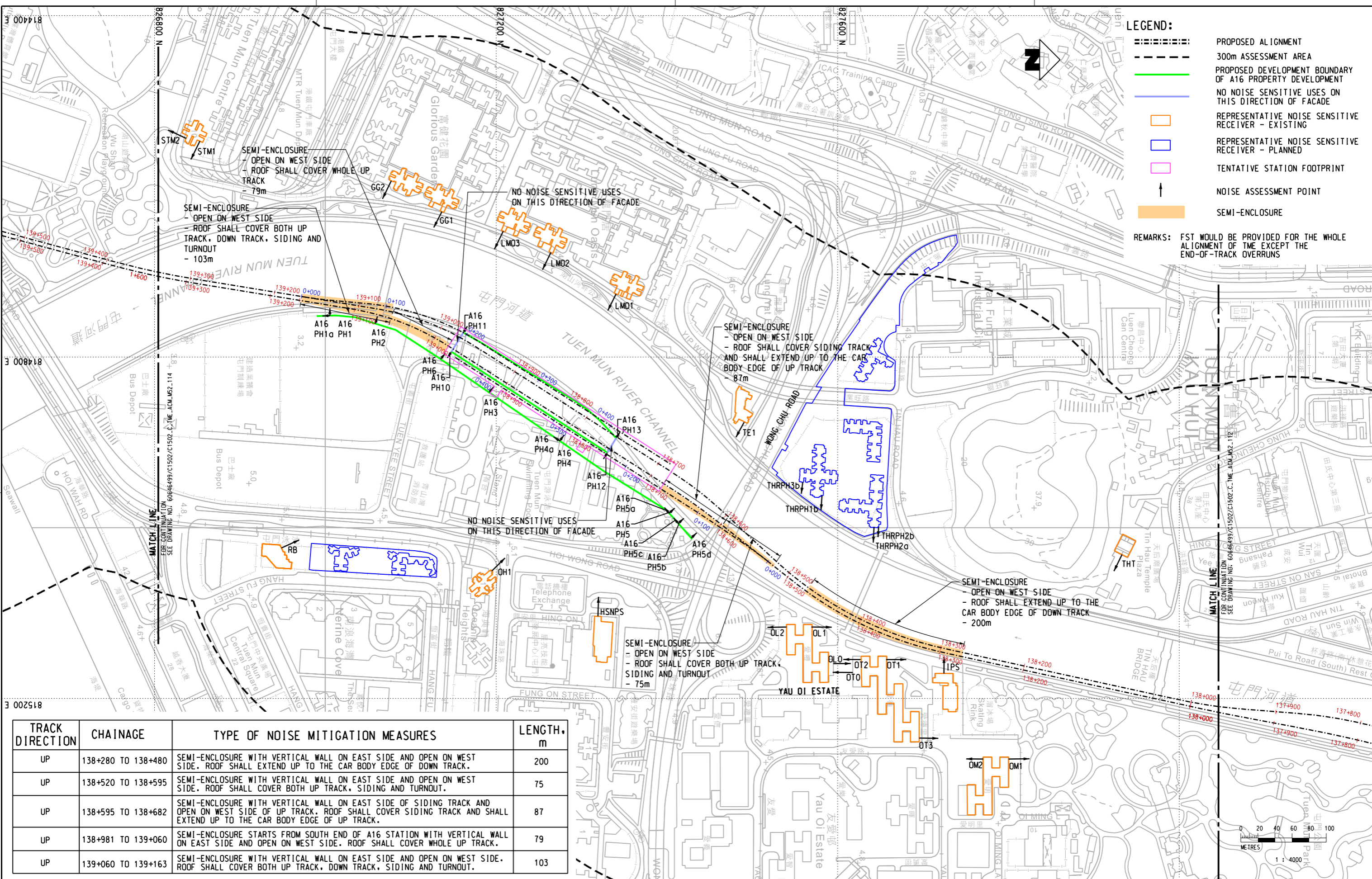
ORIGINATOR

AECOM

CADD REF. C1502_C_TME_ACM_M52_112.dgn

TITLE	C1502 TUEN MUN SOUTH EXTENSION MITIGATION MEASURES FOR RAILWAY NOISE (SHEET 1 OF 3)	
SCALE	1 : 4000 (A3)	REV. A
FIGURE NO.	C1502/C/TME/ACM/M52/112	

DO NOT SCALE DRAWINGS. ALL DIMENSIONS SHALL BE VERIFIED ON SITE.
 © MTR CORPORATION LIMITED 2008. ALL RIGHTS RESERVED.
 REPRODUCTION OF THIS DRAWING / DOCUMENT IS OWNED BY THE MTR CORPORATION LIMITED OF HONG KONG. NO REPRODUCTION OF THE DRAWING / DOCUMENT OR ANY PART BY WHATEVER MEANS IS PERMITTED WITHOUT THE PRIOR WRITTEN CONSENT OF THE MTR CORPORATION LIMITED.



LEGEND:

- PROPOSED ALIGNMENT
- 300m ASSESSMENT AREA
- PROPOSED DEVELOPMENT BOUNDARY OF A16 PROPERTY DEVELOPMENT
- NO NOISE SENSITIVE USES ON THIS DIRECTION OF FACADE
- REPRESENTATIVE NOISE SENSITIVE RECEIVER - EXISTING
- REPRESENTATIVE NOISE SENSITIVE RECEIVER - PLANNED
- TENTATIVE STATION FOOTPRINT
- NOISE ASSESSMENT POINT
- SEMI-ENCLOSURE

REMARKS: FST WOULD BE PROVIDED FOR THE WHOLE ALIGNMENT OF THE EXCEPT THE END-OF-TRACK OVERRUNS

TRACK DIRECTION	CHAINAGE	TYPE OF NOISE MITIGATION MEASURES	LENGTH, m
UP	138+280 TO 138+480	SEMI-ENCLOSURE WITH VERTICAL WALL ON EAST SIDE AND OPEN ON WEST SIDE. ROOF SHALL EXTEND UP TO THE CAR BODY EDGE OF DOWN TRACK.	200
UP	138+520 TO 138+595	SEMI-ENCLOSURE WITH VERTICAL WALL ON EAST SIDE AND OPEN ON WEST SIDE. ROOF SHALL COVER BOTH UP TRACK, SIDING AND TURNOUT.	75
UP	138+595 TO 138+682	SEMI-ENCLOSURE WITH VERTICAL WALL ON EAST SIDE OF SIDING TRACK AND OPEN ON WEST SIDE OF UP TRACK. ROOF SHALL COVER SIDING TRACK AND SHALL EXTEND UP TO THE CAR BODY EDGE OF UP TRACK.	87
UP	138+981 TO 139+060	SEMI-ENCLOSURE STARTS FROM SOUTH END OF A16 STATION WITH VERTICAL WALL ON EAST SIDE AND OPEN ON WEST SIDE. ROOF SHALL COVER WHOLE UP TRACK.	79
UP	139+060 TO 139+163	SEMI-ENCLOSURE WITH VERTICAL WALL ON EAST SIDE AND OPEN ON WEST SIDE. ROOF SHALL COVER BOTH UP TRACK, DOWN TRACK, SIDING AND TURNOUT.	103

REV	DESCRIPTION	BY	DATE	APPROVED	REV	DESCRIPTION	BY	DATE	APPROVED

MTR

TUEN MUN SOUTH EXTENSION

AECOM

ORIGINATOR

DATE

DO NOT SCALE DRAWINGS. ALL DIMENSIONS SHALL BE VERIFIED ON SITE.
 © MTR CORPORATION LIMITED 2008 COPYRIGHT IN RESPECT OF THIS DRAWING IS OWNED BY THE MTR CORPORATION LIMITED OF HONG KONG. NO REPRODUCTION OF THE DRAWING OR DOCUMENT OR ANY PART BY WHATEVER MEANS IS PERMITTED WITHOUT THE PRIOR WRITTEN CONSENT OF THE MTR CORPORATION LIMITED.

CADD REF. C1502_C_TME_ACM_M52_113.dgn

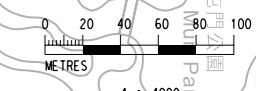
TITLE

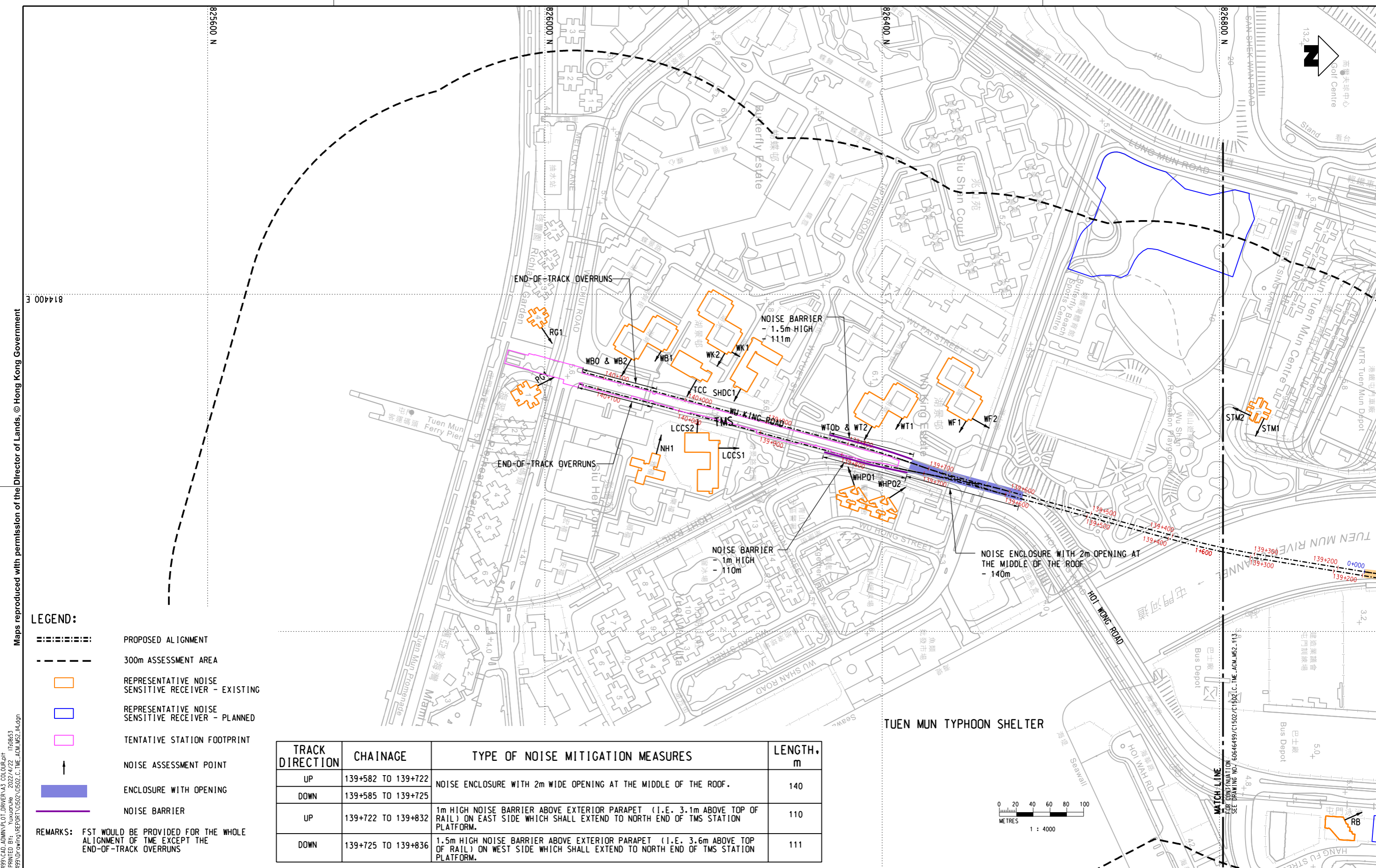
C1502
 TUEN MUN SOUTH EXTENSION
 MITIGATION MEASURES FOR RAILWAY NOISE
 (SHEET 2 OF 3)

SCALE 1 : 4000 (A3)

FIGURE NO. C1502/C/TME/ACM/M52/113

REV. A





Maps reproduced with permission of the Director of Lands, © Hong Kong Government

LEGEND:

- PROPOSED ALIGNMENT
- 300m ASSESSMENT AREA
- REPRESENTATIVE NOISE SENSITIVE RECEIVER - EXISTING
- REPRESENTATIVE NOISE SENSITIVE RECEIVER - PLANNED
- TENTATIVE STATION FOOTPRINT
- NOISE ASSESSMENT POINT
- ENCLOSURE WITH OPENING
- NOISE BARRIER

REMARKS: FST WOULD BE PROVIDED FOR THE WHOLE ALIGNMENT OF TME EXCEPT THE END-OF-TRACK OVERRUNS

TRACK DIRECTION	CHAINAGE	TYPE OF NOISE MITIGATION MEASURES	LENGTH, m
UP	139+582 TO 139+722	NOISE ENCLOSURE WITH 2m WIDE OPENING AT THE MIDDLE OF THE ROOF.	140
DOWN	139+585 TO 139+725		
UP	139+722 TO 139+832	1m HIGH NOISE BARRIER ABOVE EXTERIOR PARAPET (I.E. 3.1m ABOVE TOP OF RAIL) ON EAST SIDE WHICH SHALL EXTEND TO NORTH END OF TMS STATION PLATFORM.	110
DOWN	139+725 TO 139+836	1.5m HIGH NOISE BARRIER ABOVE EXTERIOR PARAPET (I.E. 3.6m ABOVE TOP OF RAIL) ON WEST SIDE WHICH SHALL EXTEND TO NORTH END OF TMS STATION PLATFORM.	111

P:\PROJECTS\60646499\ACM_ADMIN\PLT_DRIVER\A3_COLOUR.dwg
 DRAWN BY: alexander.ho_2022/4/22 IT:0853
 FILENAME: P:\PROJECTS\60646499\ACM_ADMIN\REPORT\C1502_C_TME_ACM_M52_114.dgn

REV	DESCRIPTION	BY	DATE	APPROVED	REV	DESCRIPTION	BY	DATE	APPROVED

DRAWN	
DESIGNED	
CHECKED	
APPROVED	
DATE	

DO NOT SCALE DRAWINGS. ALL DIMENSIONS SHALL BE VERIFIED ON SITE.
 © MTR CORPORATION LIMITED 2008 COPYRIGHT IN RESPECT OF THIS DRAWING / DOCUMENT IS OWNED BY THE MTR CORPORATION LIMITED OF HONG KONG. NO REPRODUCTION OF THE DRAWING / DOCUMENT OR ANY PART BY WHATEVER MEANS IS PERMITTED WITHOUT THE PRIOR WRITTEN CONSENT OF THE MTR CORPORATION LIMITED.

MTR

TUEN MUN SOUTH EXTENSION

AECOM

ORIGINATOR

CADD REF. C1502_C_TME_ACM_M52_114.dgn

TITLE

C1502
TUEN MUN SOUTH EXTENSION
MITIGATION MEASURES FOR RAILWAY NOISE
(SHEET 3 OF 3)

SCALE 1 : 4000 (A3) FIGURE NO. C1502/C/TME/ACM/M52/114 REV. A