



Imagine it.  
Delivered.



Consultancy Agreement No. C1502

# Environmental Impact Assessment Study for Tuen Mun South Extension

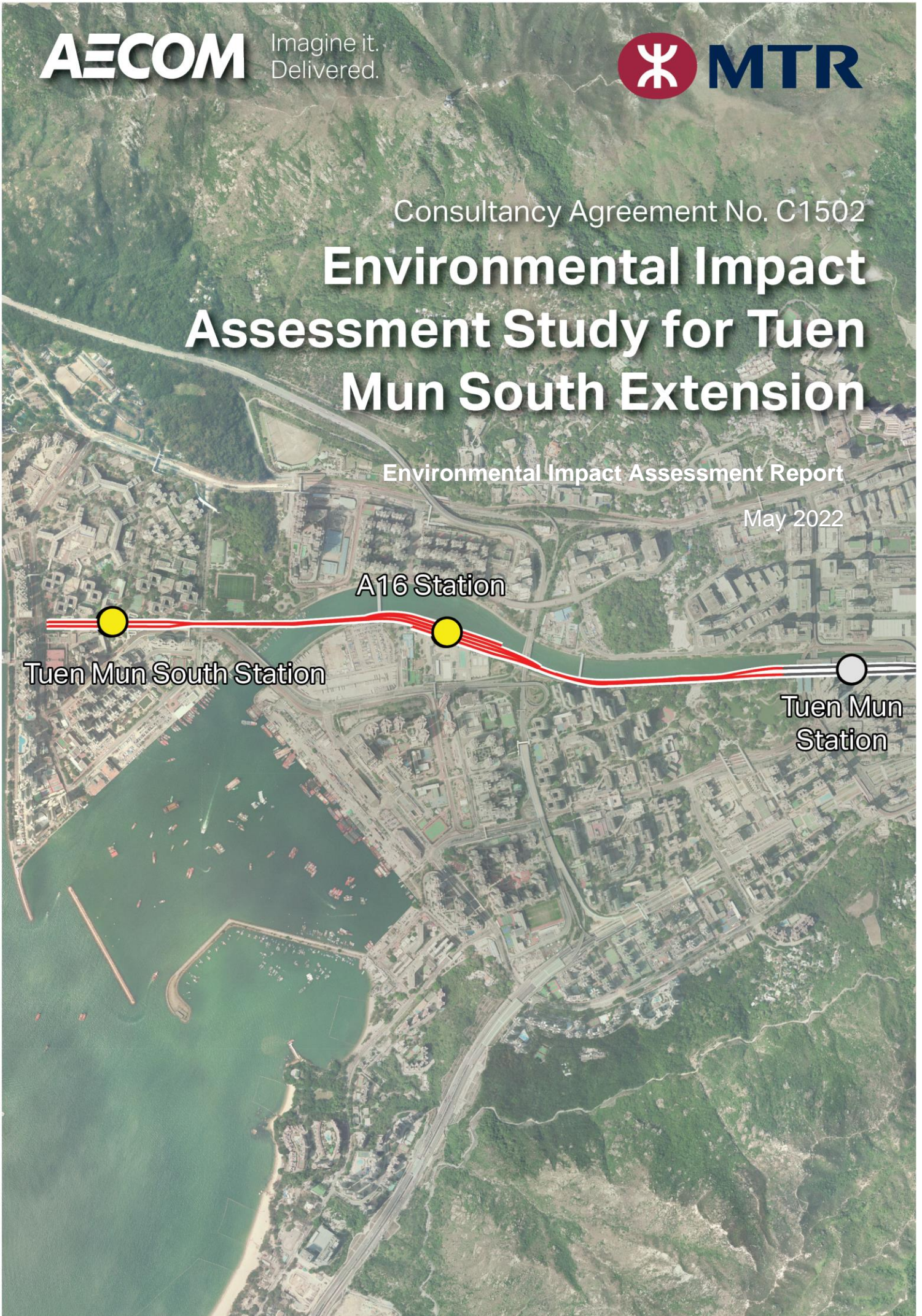
Environmental Impact Assessment Report

May 2022

A16 Station

Tuen Mun South Station

Tuen Mun  
Station



**TABLE OF CONTENTS**

**1 INTRODUCTION ..... 1-1**

1.1 Background ..... 1-1

1.2 The Project ..... 1-1

1.3 Objectives of the EIA Study ..... 1-2

1.4 Structure of the EIA Report..... 1-3

**2 PROJECT DESCRIPTION..... 2-1**

2.1 Site Location and History ..... 2-1

2.2 Purpose and Objective of the Project..... 2-1

2.3 Consideration of Alternatives/Options ..... 2-3

2.4 Details of the Project..... 2-12

2.5 Concurrent Projects ..... 2-23

**3 AIR QUALITY IMPACT ..... 3-1**

3.1 Introduction..... 3-1

3.2 Environmental Legislations, Standards and Guidelines ..... 3-1

3.3 Description of the Environment and Future Trends ..... 3-2

3.4 Identification of Air Sensitive Receivers ..... 3-4

3.5 Identification of Environmental Impacts during Construction Phase ..... 3-6

3.6 Assessment Methodology ..... 3-9

3.7 Dispersion Modelling & Modelling Approach..... 3-15

3.8 Prediction and Evaluation of Environmental Impacts ..... 3-17

3.9 Mitigation of Adverse Environmental Impacts ..... 3-17

3.10 Evaluation of Residual Impacts..... 3-21

3.11 Environmental Monitoring and Audit ..... 3-22

3.12 Conclusion..... 3-22

**4 NOISE IMPACT ..... 4-1**

4.1 Introduction..... 4-1

4.2 Environmental Legislation, Standards, and Guidelines ..... 4-1

4.3 Description of Existing Environment ..... 4-4

4.4 Noise Sensitive Receivers ..... 4-6

4.5 Construction Phase ..... 4-14

4.6 Operational Phase - Fixed Plant Noise Impact Assessment ..... 4-32

4.7 Operational Phase - Rail Noise Impact Assessment..... 4-35

4.8 Environmental Monitoring and Audit Requirement ..... 4-50

4.9 Conclusion..... 4-51

<b><u>5</u></b>	<b><u>WATER QUALITY IMPACT</u></b>	<b><u>5-1</u></b>
5.1	Introduction	5-1
5.2	Environmental Legislation, Plans, Standards, and Guidelines	5-1
5.3	Description of the Environment	5-5
5.4	Water Sensitive Receivers	5-9
5.5	Assessment Methodologies	5-10
5.6	Identification and Evaluation of Environmental Impacts	5-10
5.7	Cumulative Impacts from Concurrent Project	5-14
5.8	Recommended Water Quality Mitigation Measures	5-14
5.9	Evaluation of Residual Impacts	5-19
5.10	EM&A Requirements	5-19
5.11	Conclusions	5-19
<b><u>6</u></b>	<b><u>WASTE MANAGEMENT IMPLICATIONS</u></b>	<b><u>6-1</u></b>
6.1	Introduction	6-1
6.2	Environmental Legislation, Standards and Guidelines	6-1
6.3	Identification and Evaluation of Wastes Implications	6-4
6.4	Mitigation of Adverse Environmental Impacts	6-12
6.5	Evaluation of Residual Environmental Impacts	6-18
6.6	Environmental Monitoring and Audit Requirement	6-18
6.7	Conclusion	6-18
<b><u>7</u></b>	<b><u>LAND CONTAMINATION</u></b>	<b><u>7-1</u></b>
7.1	Introduction	7-1
7.2	Environmental Legislation, Plans, Standards, and Guidelines	7-1
7.3	Assessment Methodologies	7-1
7.4	Description of the Environment	7-2
7.5	Identification of Potential Land Contamination Concern	7-2
7.6	Site Investigation Plan	7-9
7.7	Evaluation of Environmental Impacts	7-11
7.8	Mitigation of Adverse Environmental Impacts	7-11
7.9	Evaluation of Residual Environmental Impacts	7-12
7.10	Conclusion	7-13
<b><u>8</u></b>	<b><u>ECOLOGY (TERRESTRIAL)</u></b>	<b><u>8-1</u></b>
8.1	Introduction	8-1
8.2	Environmental Legislation, Standards and Guidelines	8-1
8.3	Assessment Methodology	8-1
8.4	Description of the Environment	8-6
8.5	Survey Findings	8-11

8.6	Ecological Value of Habitats and Species.....	8-16
8.7	Identification of Potential Ecological Impacts .....	8-20
8.8	Evaluation of Potential Ecological Impacts.....	8-29
8.9	Mitigation of Adverse Environmental Impacts .....	8-31
8.10	Cumulative Ecological Impacts .....	8-37
8.11	Evaluation of Residual Ecological Impacts.....	8-37
8.12	Environmental Monitoring and Audit .....	8-38
8.13	Conclusion.....	8-38
8.14	References .....	8-39
<b>9</b>	<b><u>LANDSCAPE AND VISUAL IMPACT ASSESSMENT .....</u></b>	<b><u>9-1</u></b>
9.1	Introduction.....	9-1
9.2	Scope and Content of the Study .....	9-1
9.3	Environmental Legislation, Standards and Guidelines .....	9-2
9.4	Assessment Methodology.....	9-3
9.5	Review of Planning Control Framework.....	9-8
9.6	Baseline Study.....	9-11
9.7	Landscape Impact Assessment .....	9-27
9.8	Visual Impact Assessment.....	9-37
9.9	Landscape and Visual Mitigation Measures.....	9-45
9.10	Residual Impacts .....	9-48
9.11	Cumulative Impacts .....	9-64
9.12	Conclusion.....	9-65
<b>10</b>	<b><u>CULTURAL HERITAGE IMPACT ASSESSMENT .....</u></b>	<b><u>10-1</u></b>
10.1	Introduction.....	10-1
10.2	Environmental Legislation, Standards and Guidelines .....	10-1
10.3	Assessment Methodology.....	10-2
10.4	Background .....	10-3
10.5	Baseline Conditions.....	10-5
10.6	Identification of Environmental Impacts .....	10-6
10.7	Mitigation Measures.....	10-7
10.8	Conclusion.....	10-7
10.9	References .....	10-8
<b>11</b>	<b><u>HAZARD TO LIFE .....</u></b>	<b><u>11-1</u></b>
11.1	Background .....	11-1
11.2	Assessment Criteria.....	11-1
11.3	Assessment Approach.....	11-2
11.4	Description of Assessment Area.....	11-3

11.5	Hazard Identification .....	11-13
11.6	Hazard Occurrence .....	11-19
11.7	Consequence and Impact Analysis.....	11-29
11.8	Risk Evaluation.....	11-32
11.9	Risk Mitigation Measures.....	11-40
11.10	Environmental Monitoring and Audit Requirement .....	11-43
11.11	Conclusion.....	11-43
11.12	References .....	11-44
<b>12</b>	<b><u>ENVIRONMENTAL MONITORING AND AUDIT .....</u></b>	<b><u>12-1</u></b>
12.1	Introduction.....	12-1
12.2	Air Quality .....	12-1
12.3	Noise .....	12-1
12.4	Water Quality.....	12-1
12.5	Waste Management.....	12-2
12.6	Land Contamination .....	12-2
12.7	Terrestrial Ecology.....	12-2
12.8	Landscape and Visual .....	12-3
12.9	Cultural Heritage.....	12-3
12.10	Hazard to Life .....	12-3
<b>13</b>	<b><u>SUMMARY OF ENVIRONMENTAL OUTCOMES .....</u></b>	<b><u>13-1</u></b>
13.1	Overview .....	13-1
13.2	Environmental Benefits of the Project .....	13-1
13.3	Incorporation of Environmentally Friendly Options.....	13-1
13.4	Environmental Designs Recommended.....	13-2
13.5	Key Environmental Problems Avoided and Environmentally Sensitive Areas Protected .....	13-3
13.6	Environmental Protection Measures Recommended .....	13-5
13.7	Estimation of Population Protected.....	13-10
<b>14</b>	<b><u>CONCLUSION.....</u></b>	<b><u>14-1</u></b>
14.1	Conclusion of EIA Study .....	14-1

**LIST OF TABLES**

Table 2.1	Considerations and Constraints for Alignment Option Selection .....	2-5
Table 2.2	Comparison of Alignment Options .....	2-6
Table 2.3	Comparison of TRB Scheme Options .....	2-7
Table 2.4	Key Public Views and Corresponding Design Considerations.....	2-15
Table 2.5	Key Recommended Mitigation Measures / Good Site Practices / Enhancement Measures and their Associated Benefits.....	2-18
Table 2.6	List of Concurrent Projects and Potential Cumulative Impacts .....	2-24
Table 3.1	Hong Kong Air Quality Objectives.....	3-1
Table 3.2	The Air Quality Monitoring Data Recorded at EPD’s Tuen Mun AQMS in Year 2016 – 2020 .....	3-3
Table 3.3	PATHv2.1 Model - Air Pollutant Concentrations in Year 2025.....	3-3
Table 3.4	Representative Air Sensitive Receivers along TME .....	3-4
Table 3.5	Representative Air Sensitive Receivers in the vicinity of Offsite Works Area..	3-6
Table 3.6	Particle Size Distribution .....	3-10
Table 3.7	Dust Emission Design Control Measures .....	3-10
Table 3.8	Emission Factors for Dusty Construction Activities .....	3-11
Table 3.9	Fractions of Particulates for Construction Dust .....	3-11
Table 3.10	Tentative Construction Programme.....	3-12
Table 3.11	Particle Size Distribution of Aggregate Handling (equivalent to Heavy Construction Activities and Wind Erosion) .....	3-16
Table 3.12	Worst Predicted Cumulative Air Quality Impact at Representative ASRs (Scenario 1 with Dust Mitigation Measures) .....	3-18
Table 3.13	Worst Predicted Cumulative Air Quality Impact at Representative ASRs (Scenario 2 with Dust Mitigation Measures) .....	3-19
Table 4.1	Noise Criteria for Daytime Construction Noise .....	4-1
Table 4.2	Construction Noise Criteria during Restricted Hours .....	4-2
Table 4.3	Acceptable Noise Levels for Airborne Rail Noise .....	4-3
Table 4.4	Acceptable Noise Levels for Fixed Noise Source.....	4-4
Table 4.5	Summary of Measured Prevailing Background Noise Levels .....	4-5
Table 4.6	Identified NSRs and Representative Assessment Points within 300m Assessment Area from the Project .....	4-7
Table 4.7	Summary of Unmitigated Construction Noise Levels .....	4-16
Table 4.8	SWL of QPME adopted for Construction Noise Mitigation.....	4-20
Table 4.9	Summary of Mitigated Construction Noise Levels (Non-Restricted Hours)....	4-23
Table 4.10	Summary of Cumulative Noise Impact .....	4-31
Table 4.11	Maximum Allowable SWL for Planned Noise Source at A16 Station .....	4-34
Table 4.12	Maximum Allowable SWL for Planned Noise Source at TMS Station .....	4-34
Table 4.13	Assumptions Adopted in Railway Noise Assessment.....	4-38
Table 4.14	Summary of Unmitigated Rail Noise Levels .....	4-40
Table 4.15	Summary of Cumulative Rail Noise Levels (Unmitigated Scenario).....	4-43
Table 4.16	Proposed Noise Mitigation Measures for Rail Operation .....	4-45
Table 4.17	Summary of Mitigated Rail Noise Levels .....	4-46
Table 4.18	Summary of Cumulative Rail Noise Levels (Mitigated Scenario) .....	4-49
Table 5.1	Summary of Water Quality Objectives for North Western WCZ.....	5-1
Table 5.2	WSD Standards at Flushing Water Intakes .....	5-5
Table 5.3	Summary Statistics of Marine Water Quality of North Western WCZ Collected by EPD in 2020 .....	5-6
Table 5.4	Summary Statistics of River Water Quality of Tuen Mun River Collected by EPD in 2020 .....	5-8
Table 6.1	Summary of Inert and non-inert C&D Materials Quantities Generated .....	6-6
Table 6.2	Changes in Sampling Location ID.....	6-8
Table 6.3	Summary of Chemical Screening Results.....	6-10

Table 6.4	Summary of Biological Screening Results.....	6-10
Table 6.5	Estimated Quantities of Sediment under each Disposal Option .....	6-11
Table 6.6	Waste Arising, Waste Handling Procedures and Disposal Outlets .....	6-16
Table 7.1	Summary of Historical Land Uses of the Project Area.....	7-3
Table 7.2	Summary of Potential Land Contamination Issues within the Project Area.....	7-6
Table 7.3	Sampling and Testing Plan .....	7-10
Table 8.1	Baseline Information of Ecological Resources within the Assessment Area ....	8-2
Table 8.2	Ecological Survey Schedule.....	8-6
Table 8.3	Maximum Number of Nests Recorded at Tuen Mun Egrettry (2017 – 2021) ....	8-7
Table 8.4	Species of Conservation Importance Recorded from Literature Review for TME Alignment and the Mong Wing Street Offsite Works Area .....	8-10
Table 8.5	Habitats Identified within the Assessment Area.....	8-11
Table 8.6	Number of Nests Recorded at Tuen Mun Egrettry .....	8-13
Table 8.7	Number and Species of Night Roost Ardeid Recorded during Ardeid Night Roost Survey.....	8-14
Table 8.8	Ecological Evaluation of Modified Watercourse and Developed Area within the Assessment Area for TME Alignment.....	8-16
Table 8.9	Ecological Evaluation of Mixed Woodland, Village/Orchard and Plantation within the Assessment Area for TME Alignment.....	8-17
Table 8.10	Species of Conservation Importance Recorded within the Assessment Area for TME Alignment.....	8-18
Table 8.11	Ecological Evaluation of Habitats within the Assessment Area for Mong Wing Street Offsite Works Area.....	8-20
Table 8.12	Direct Loss of Terrestrial Habitats within Project Footprint.....	8-21
Table 8.13	Evaluation of Potential Ecological Impacts to Developed Area and Modified Watercourse (Assessment Area of TME Alignment).....	8-29
Table 8.14	Evaluation of Potential Ecological Impacts to Mixed Woodland, Village/Orchard and Plantation (Assessment Area of TME Alignment) .....	8-30
Table 8.15	Evaluation of Potential Ecological Impacts to Identified Habitats (Assessment Area of Offsite Works Area).....	8-31
Table 8.16	Seasonal Sunset Time During Survey.....	8-32
Table 8.17	Summary of Construction Works/Activities within 100m from Ardeid Night Roost and the Associated Mitigation Measures for the Ardeid Night Roost.....	8-33
Table 9.1	Relationship between Sensitivity and Magnitude of Change in Defining Impact Significance.....	9-5
Table 9.2	Relationship between Visually Sensitive Receivers (VSRs) Sensitivity and Magnitude of Change in Defining Impact Significance.....	9-7
Table 9.3	Summary of the Review of Planning and Development Control Framework....	9-9
Table 9.4	Landscape Resources and Their Sensitivity .....	9-12
Table 9.5	Landscape Character Areas and Their Sensitivity.....	9-18
Table 9.6	Visually Sensitive Receivers (VSRs) and Their Sensitivity .....	9-23
Table 9.7	Magnitude of Landscape Impact during Construction and Operation .....	9-28
Table 9.8	Magnitude of Visual Impact during Construction and Operational Phases ....	9-41
Table 9.9	Proposed Landscape and Visual Mitigation Measures for Construction Phase....	9-45
Table 9.10	Proposed Landscape and Visual Mitigation Measures for Operational Phase.....	9-47
Table 9.11	Significance of Landscape Impact during Construction and Operational Phases .....	9-53
Table 9.12	Significance of Visual Impact during Construction and Operational Phases ..	9-59
Table 11.1	Population within Consultation Zone of the LPG Store .....	11-9
Table 11.2	Road Population in Construction Phase Scenario (Year 2026) .....	11-10
Table 11.3	Road Population in Operational Phase Scenario (Year 2031) .....	11-10
Table 11.4	Train Population in Operational Phase Scenario (Year 2031) .....	11-10
Table 11.5	Pedestrian Population .....	11-11

Table 11.6	Definitions of Time Modes.....	11-11
Table 11.7	Stability Category-Wind Speed Frequencies at HKO Tuen Mun Weather Station .....	11-12
Table 11.8	Weather Class-Wind Direction Frequencies at HKO Tuen Mun Weather Station .....	11-12
Table 11.9	Identified Failure Cases for the LPG Store.....	11-19
Table 11.10	Summary of Identified Failure Cases and Their Associated Failure Rates..	11-23
Table 11.11	Summary of Identified Failure Cases and Their Associated Failure Rates .	11-26
Table 11.12	Summary of Road Ignition Sources for Construction Phase (Year 2026) ...	11-31
Table 11.13	Summary of Road Ignition Sources for Operational Phase (Year 2031).....	11-31
Table 11.14	Societal Risk Data for the LPG Store covering all Assessed Scenarios .....	11-37
Table 11.15	Breakdown of PLL for the LPG Store by Major Events (All Assessed Scenarios) .....	11-39
Table 13.1	Summary of Key Environmental Problems Avoided and Sensitive Areas Protected.....	13-3
Table 13.2	Key Recommended Mitigation Measures / Good Site Practices / Enhancement Measures and their Associated Benefits.....	13-5
Table 14.1	Summary of Key Environmental Outcomes and Benefits .....	14-2