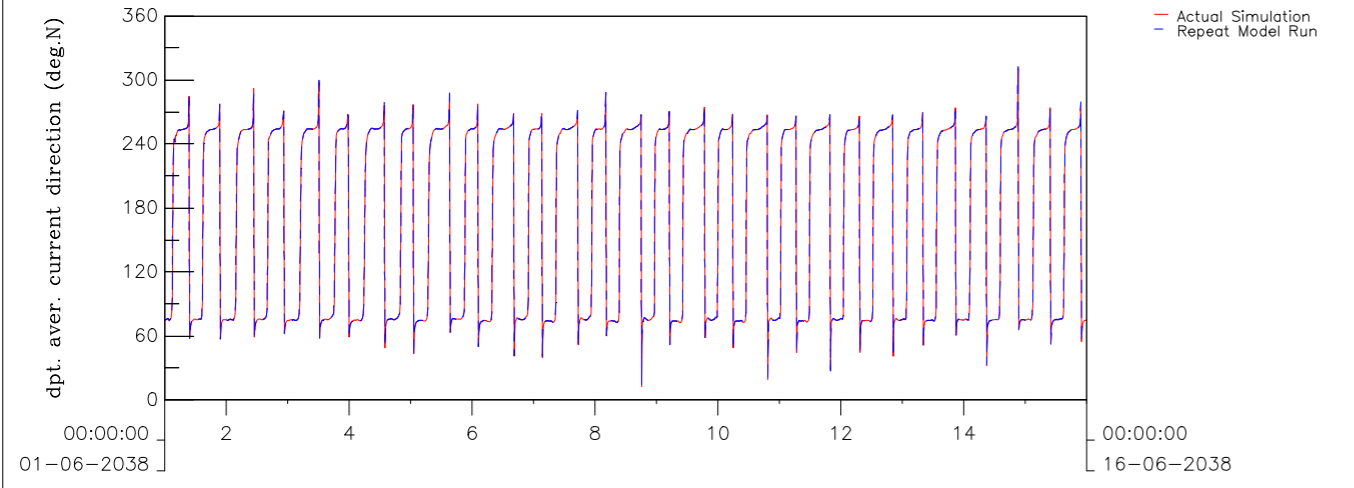
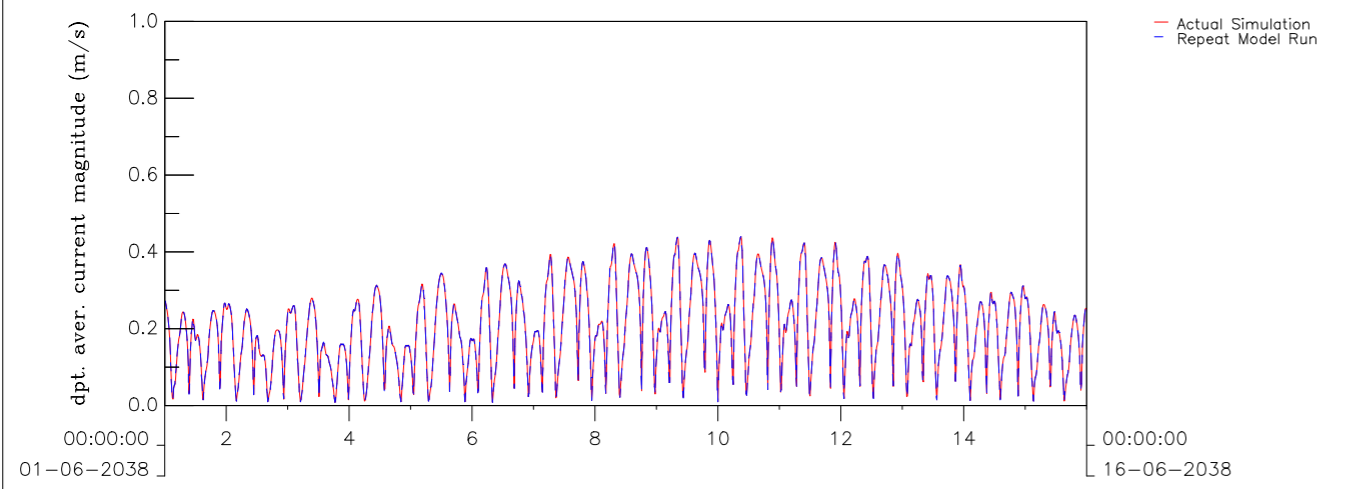
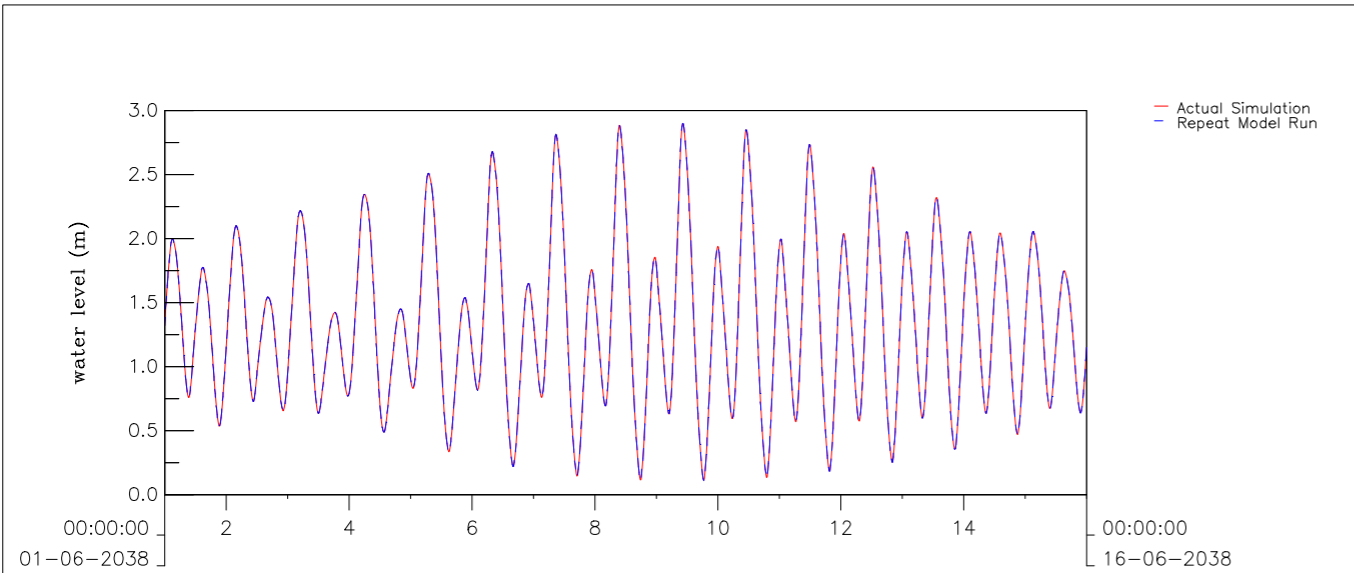
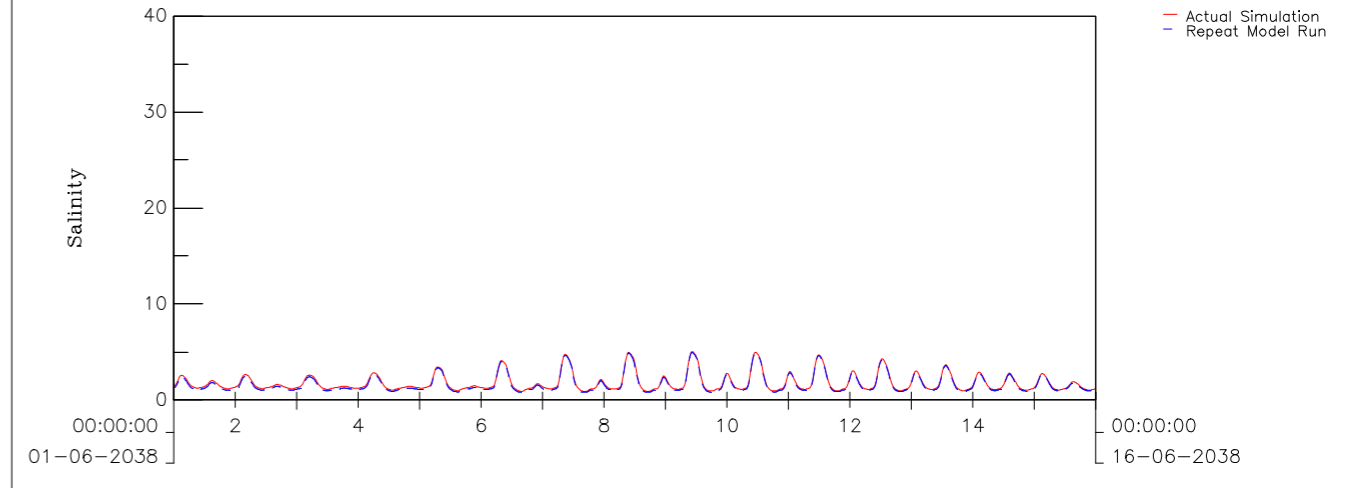
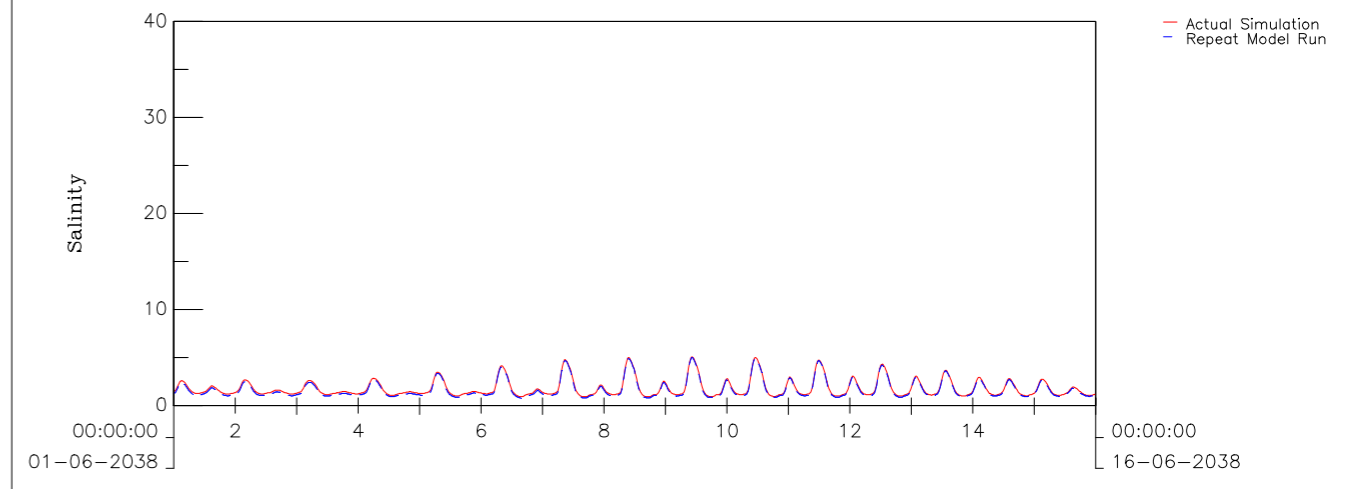
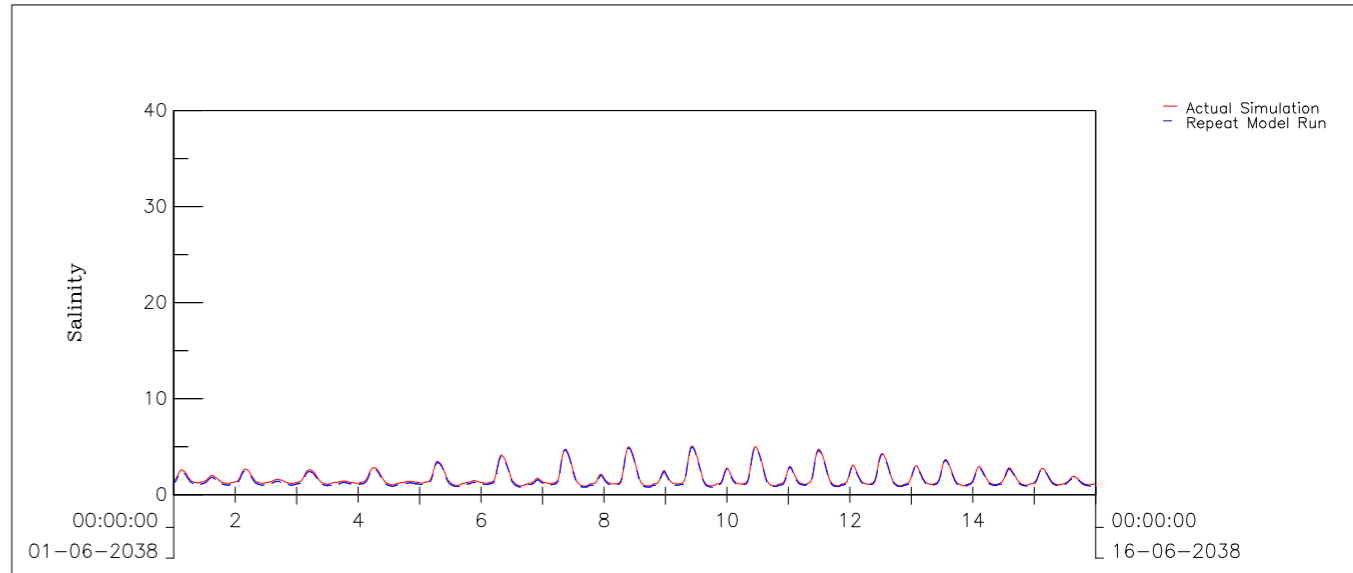


Agreement No. CE 6/2019 (DS) Hung Shui Kiu Effluent Polishing Plant and Yuen Long South Effluent Polishing Plant – Investigation Water Level, Depth Averaged Current Velocity and Direction at DM2 in Dry Season Model results – Red: Base Case; Dashed Blue: Repeat Model Run	Dry Season	Oct 2021
	Appendix 5.12– 01	
AECOM	/GPP/	Spchk.ssn

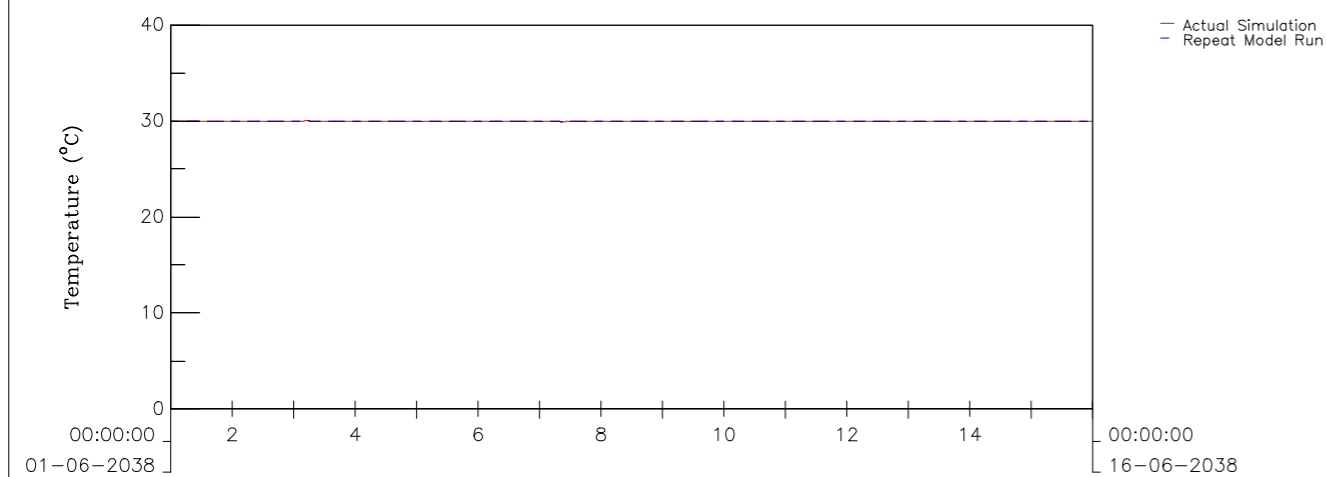
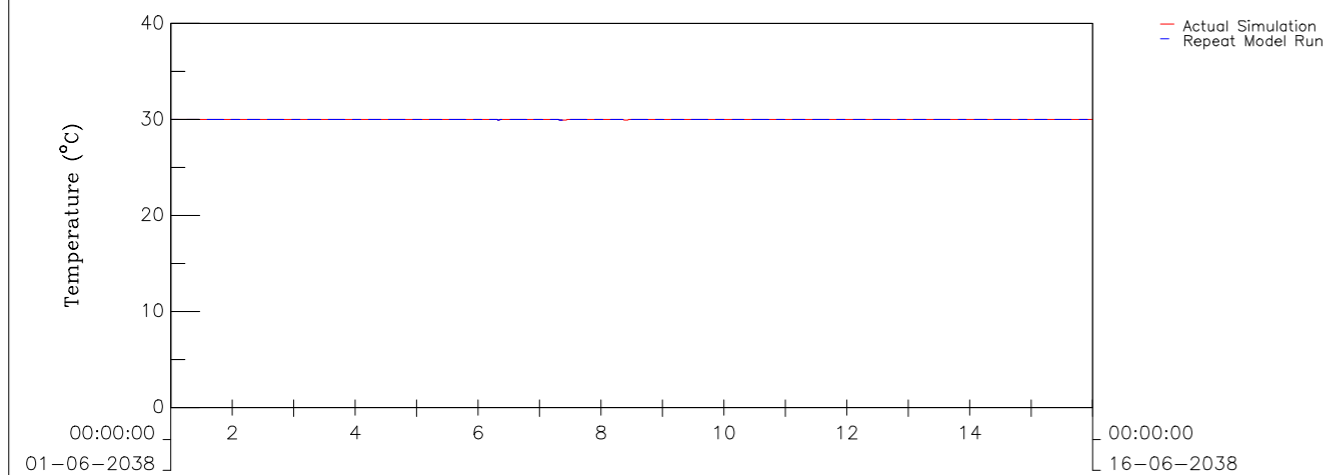
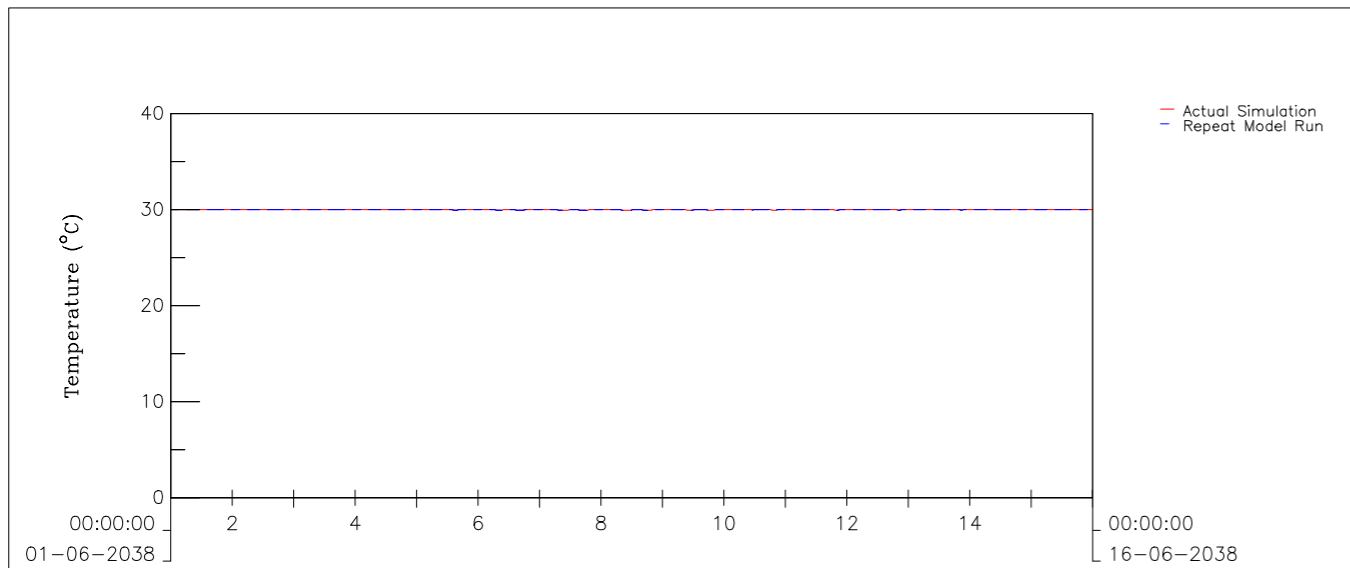
Agreement No. CE 6/2019 (DS) Hung Shui Kiu Effluent Polishing Plant and Yuen Long South Effluent Polishing Plant – Investigation Surface, Mid-Depth and Bottom Salinity at DM2 in Dry Season Model results – Red: Base Case; Dashed Blue: Repeat Model Run	Dry Season	Oct 2021
	Appendix 5.12– 02	
AECOM	/GPP/	Spchk.ssn



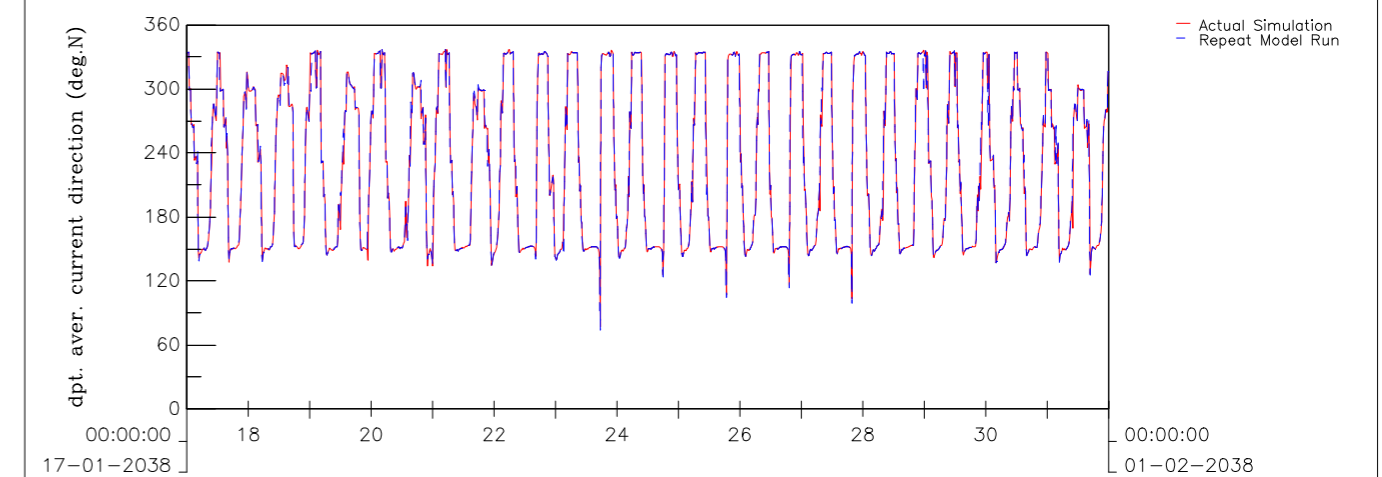
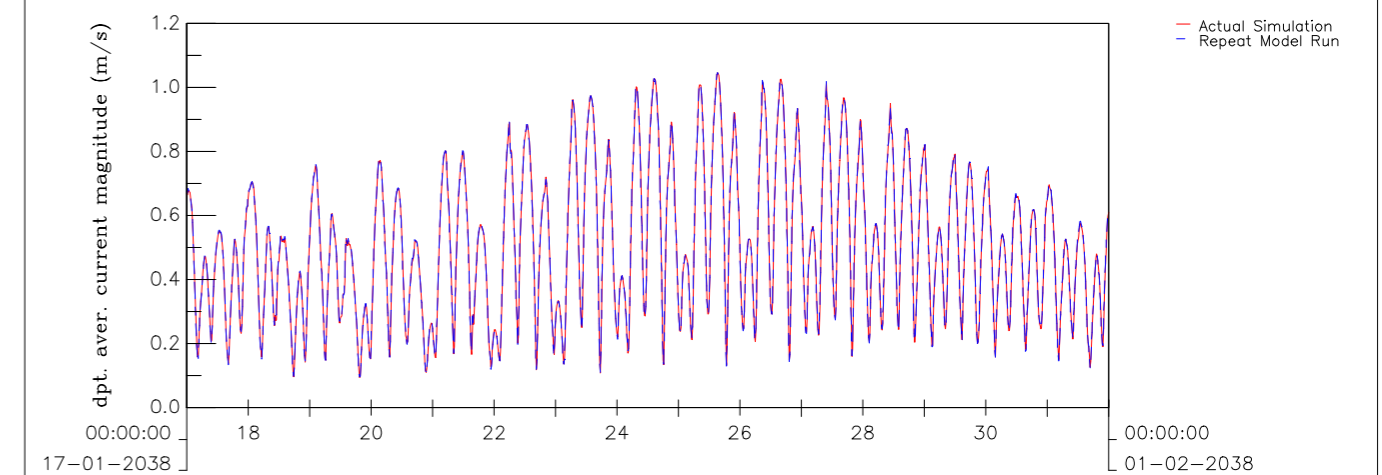
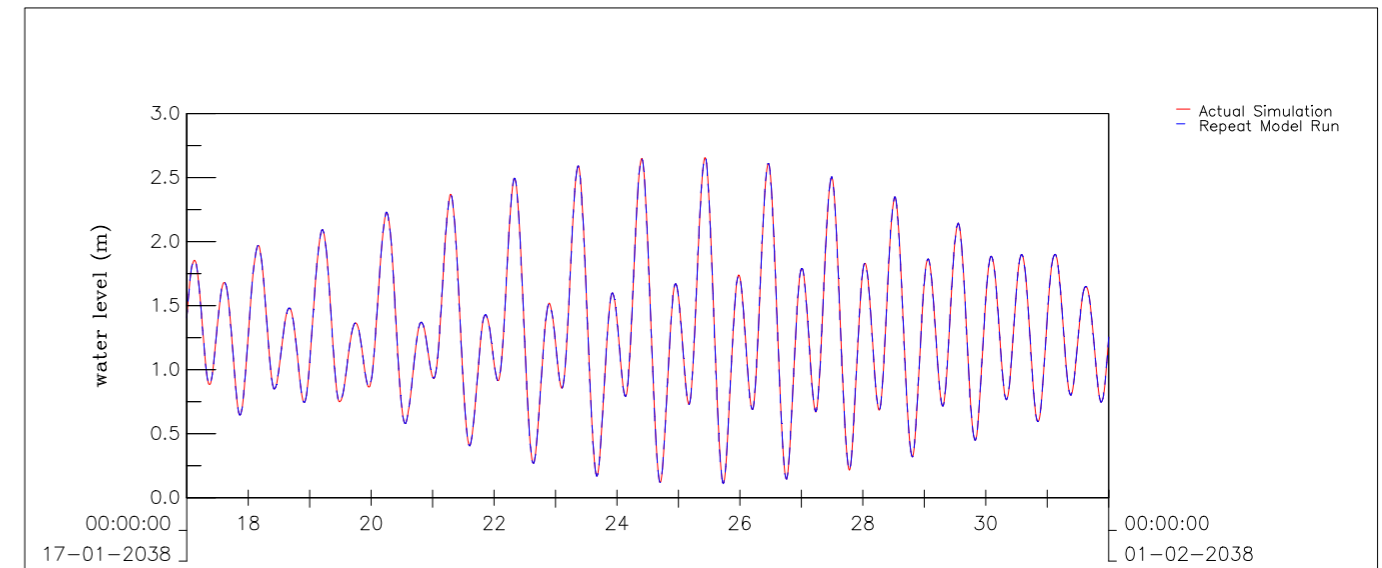
Agreement No. CE 6/2019 (DS) Hung Shui Kiu Effluent Polishing Plant and Yuen Long South Effluent Polishing Plant – Investigation Water Level, Depth Averaged Current Velocity and Direction at DM2 in Wet Season Model results – Red: Base Case; Dashed Blue: Repeat Model Run	Wet Season	Oct 2021
	Appendix 5.12– 03	
AECOM	/GPP/	Spchk.ssn



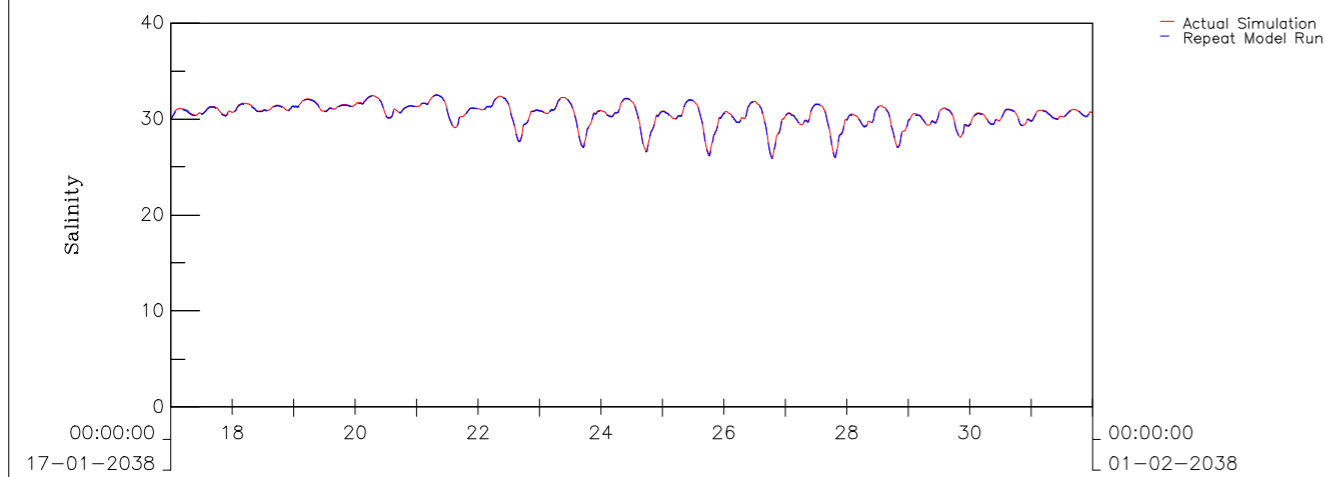
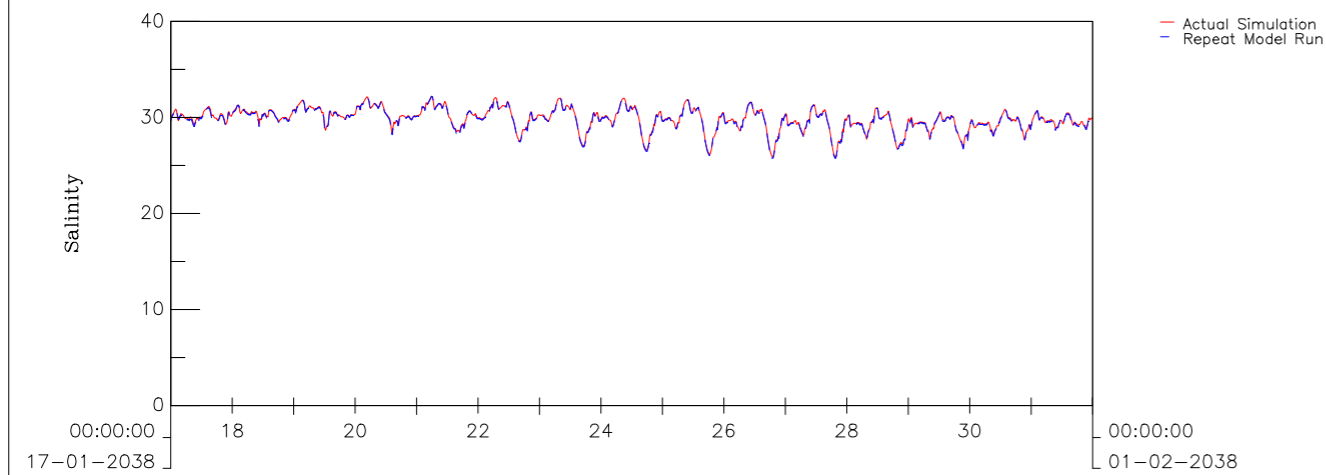
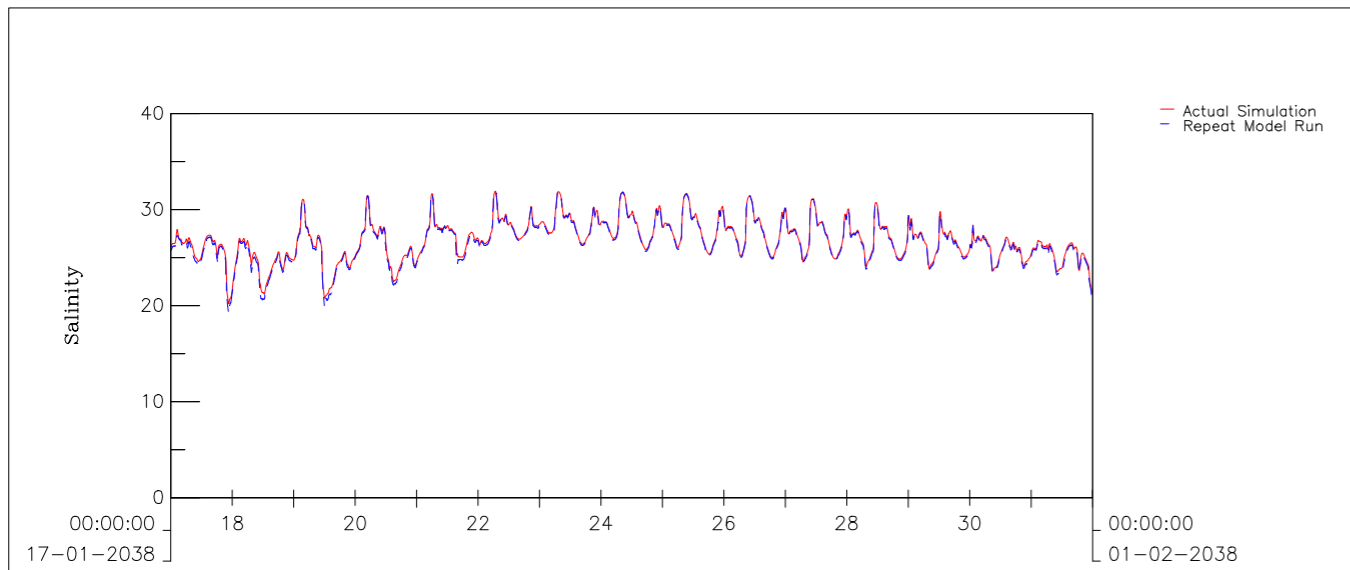
Agreement No. CE 6/2019 (DS) Hung Shui Kiu Effluent Polishing Plant and Yuen Long South Effluent Polishing Plant – Investigation Surface, Mid-Depth and Bottom Salinity at DM2 in Wet Season Model results – Red: Base Case; Dashed Blue: Repeat Model Run	Wet Season	Oct 2021
	Appendix 5.12– 04	
AECOM	/GPP/	Spchk.ssn



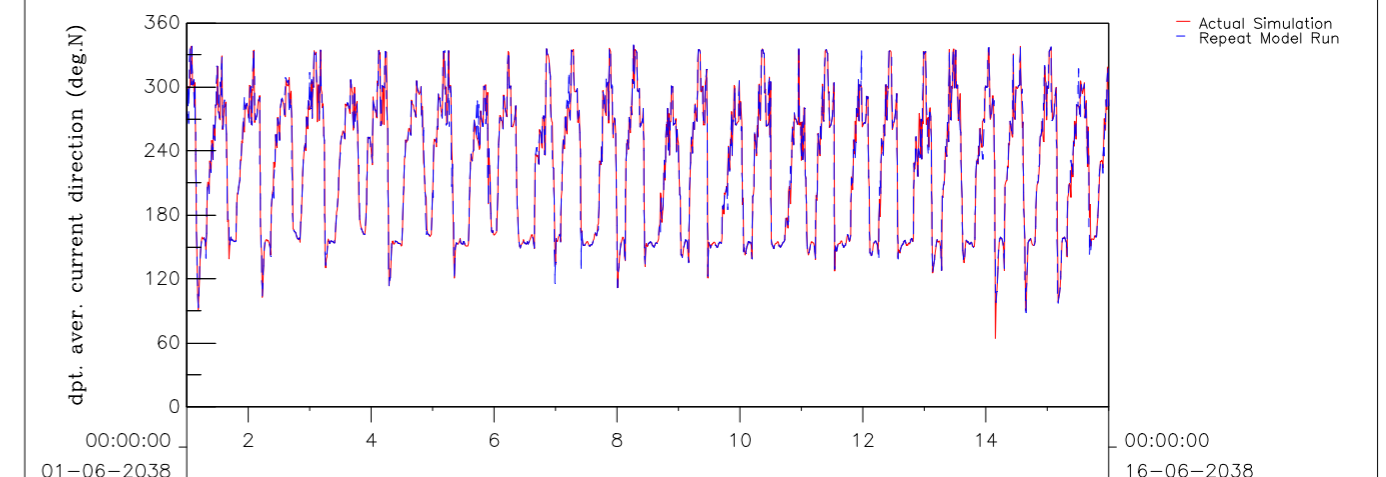
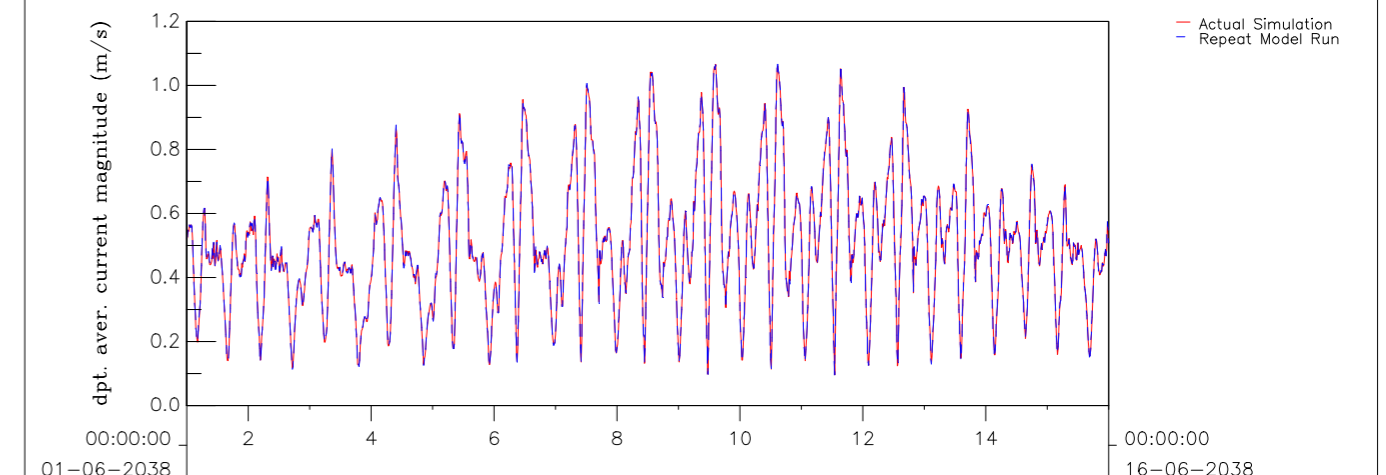
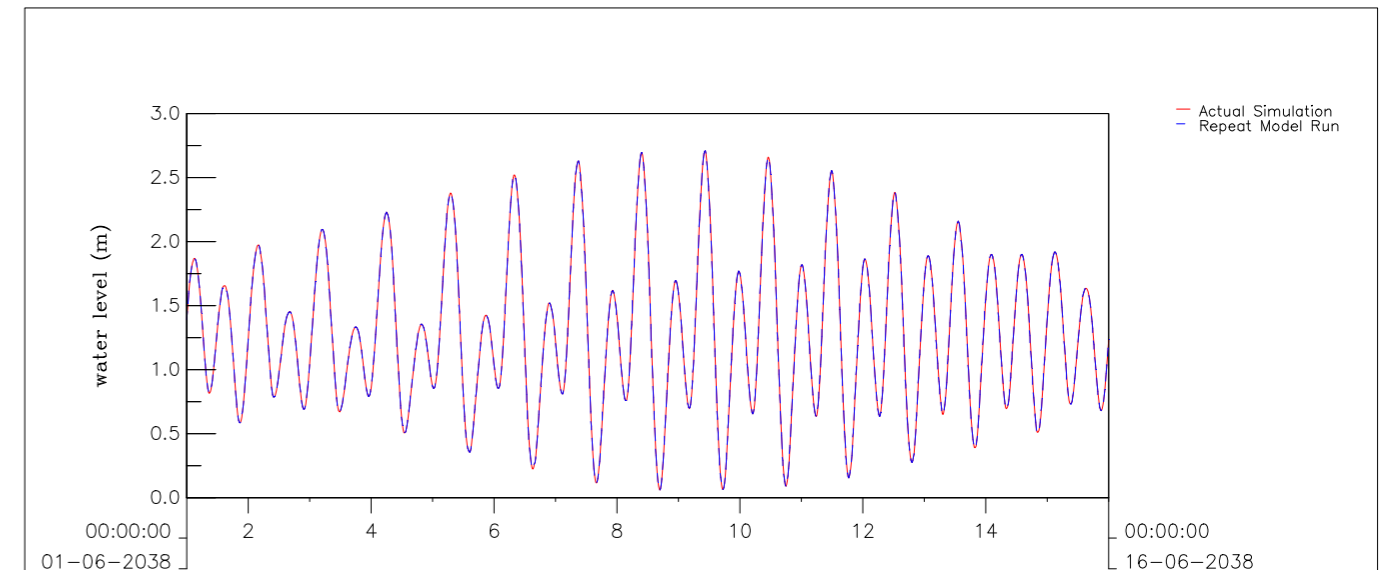
Agreement No. CE 6/2019 (DS) Hung Shui Kiu Effluent Polishing Plant and Yuen Long South Effluent Polishing Plant – Investigation Surface, Mid-Depth and Bottom Temperature at DM2 in Wet Season Model results – Red: Base Case; Dashed Blue: Repeat Model Run	Wet Season	Oct 2021
	Appendix 5.12– 05	
AECOM	/GPP/	Spchk.ssn



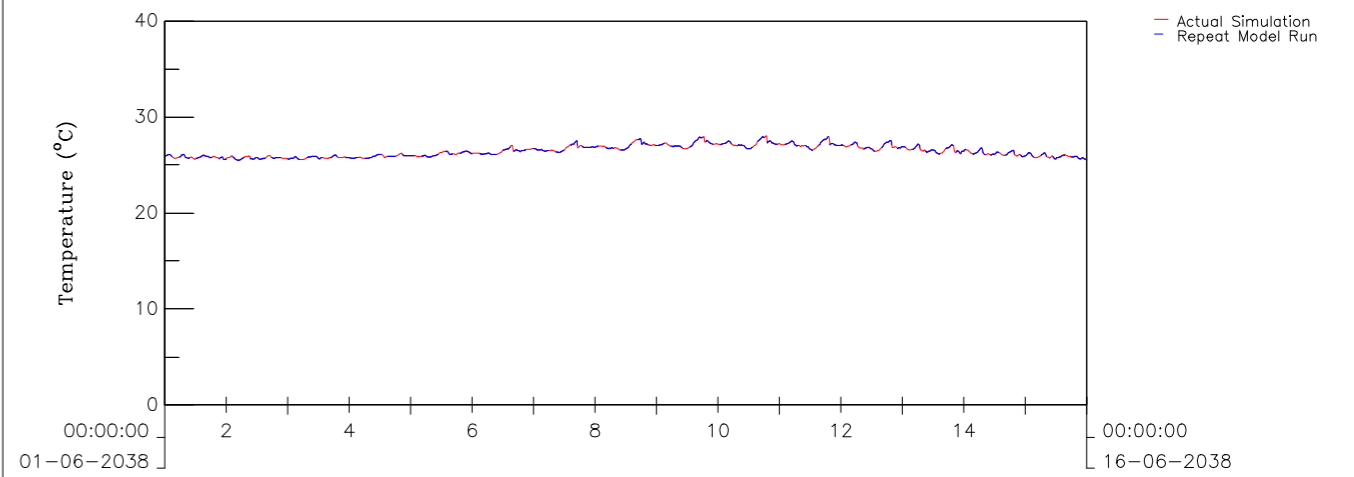
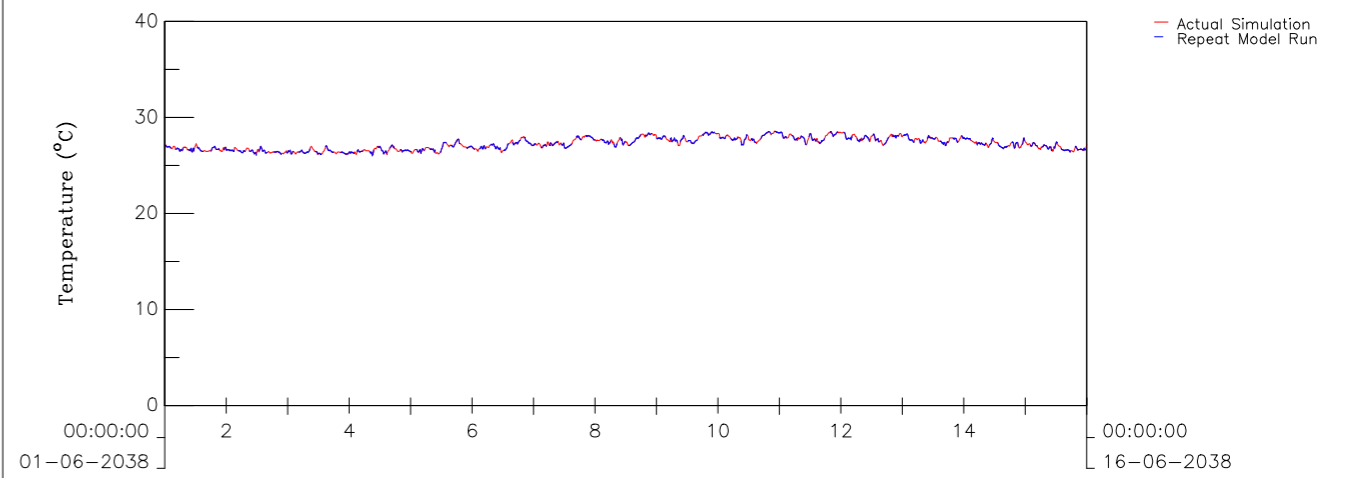
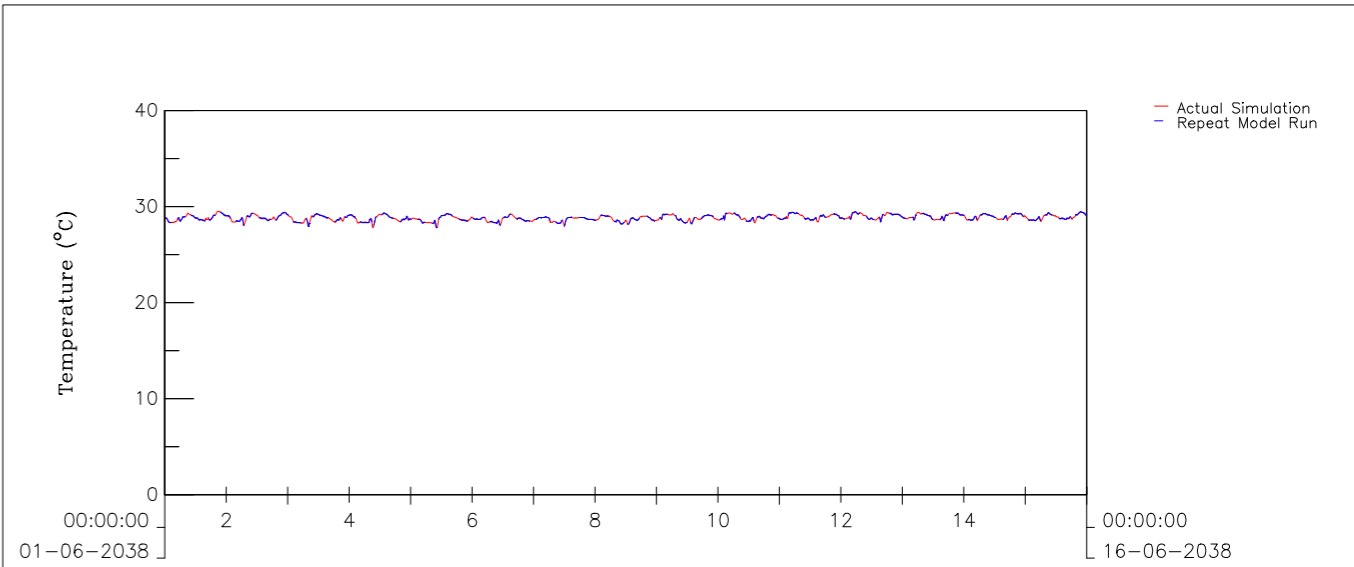
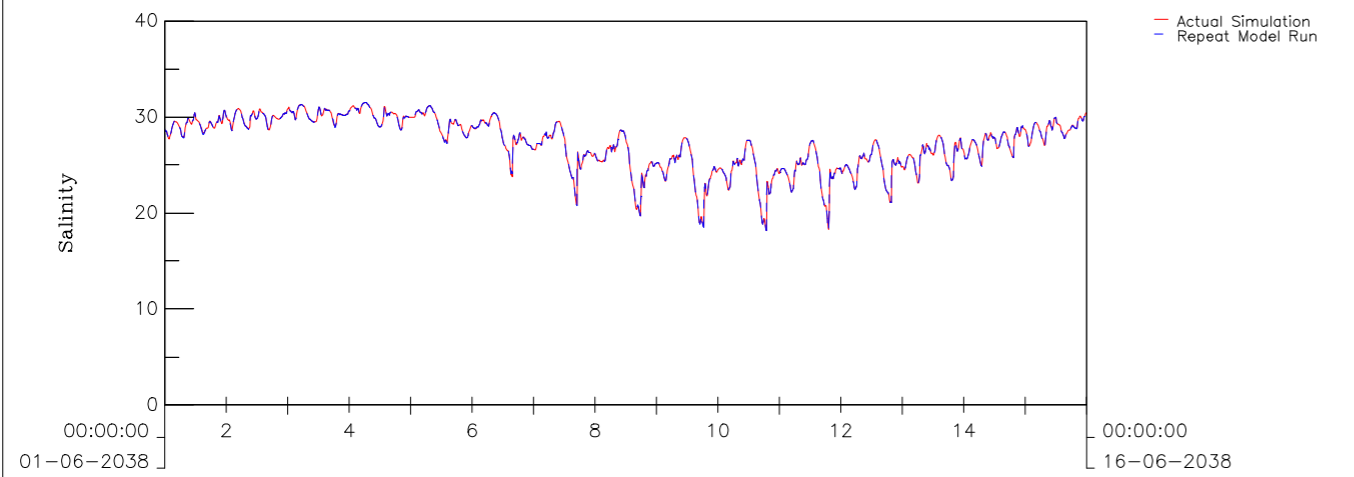
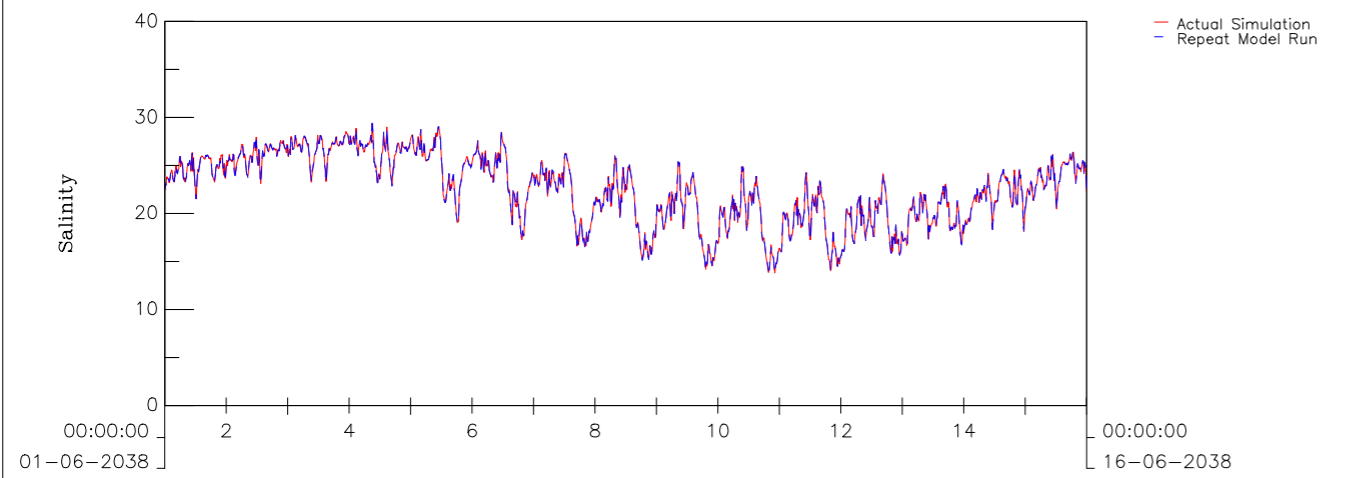
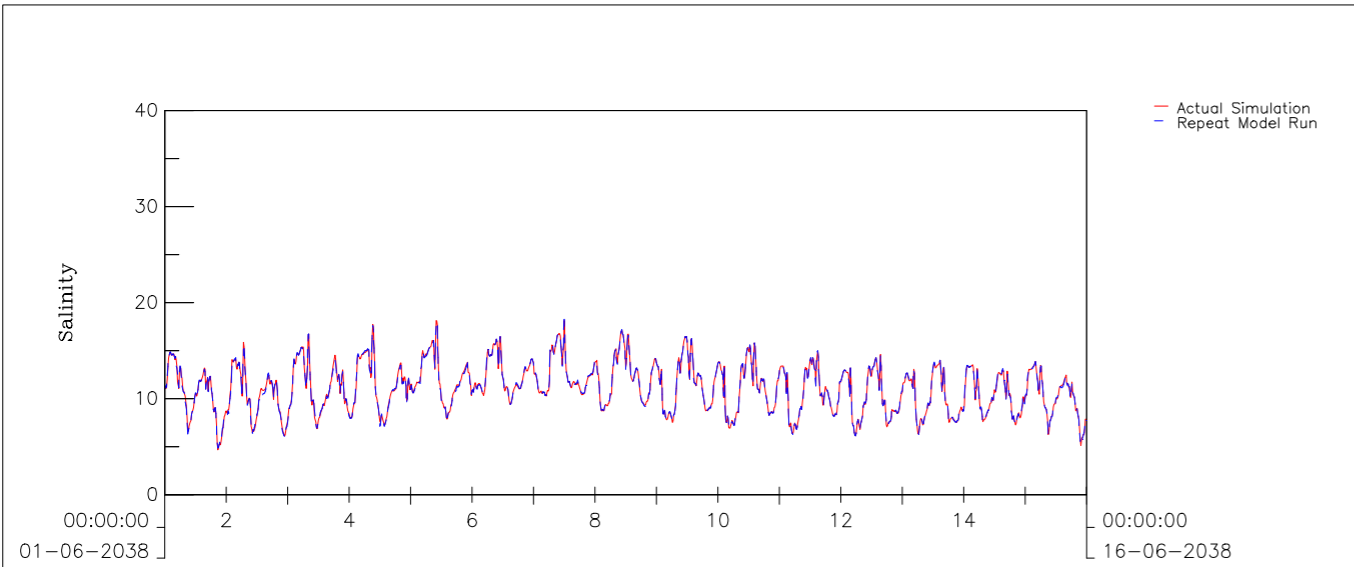
Agreement No. CE 6/2019 (DS) Hung Shui Kiu Effluent Polishing Plant and Yuen Long South Effluent Polishing Plant – Investigation Water Level, Depth Averaged Current Velocity and Direction at NM5 in Dry Season Model results – Red: Base Case; Dashed Blue: Repeat Model Run	Dry Season	Oct 2021
	Appendix 5.12– 06	
AECOM	/GPP/	Spchk.ssn



Agreement No. CE 6/2019 (DS) Hung Shui Kiu Effluent Polishing Plant and Yuen Long South Effluent Polishing Plant – Investigation Surface, Mid-Depth and Bottom Salinity at NM5 in Dry Season Model results – Red: Base Case; Dashed Blue: Repeat Model Run	Dry Season	Oct 2021
	Appendix 5.12– 07	
AECOM	/GPP/	Spchk.ssn

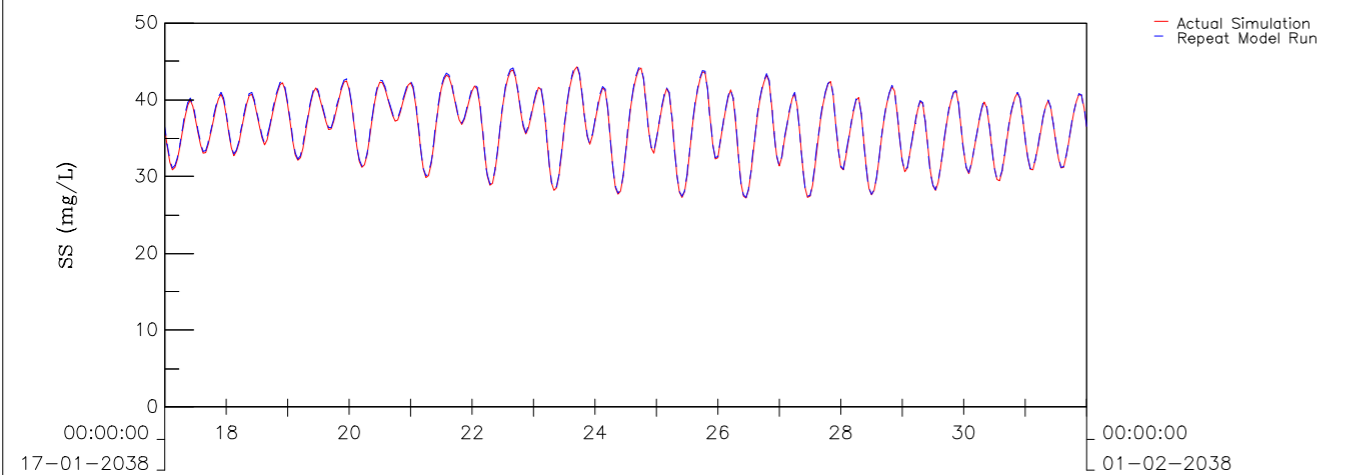
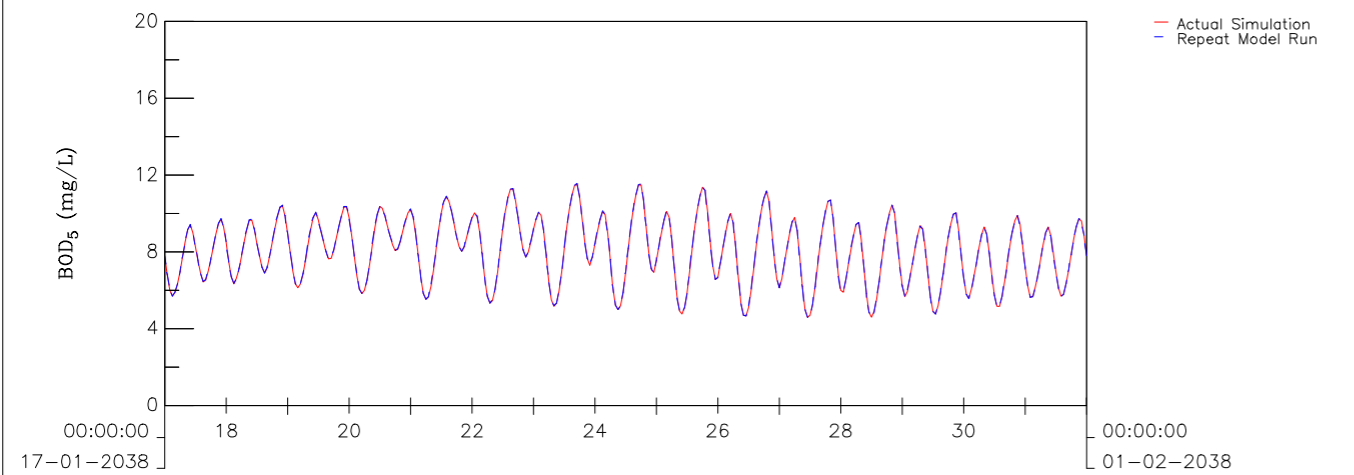
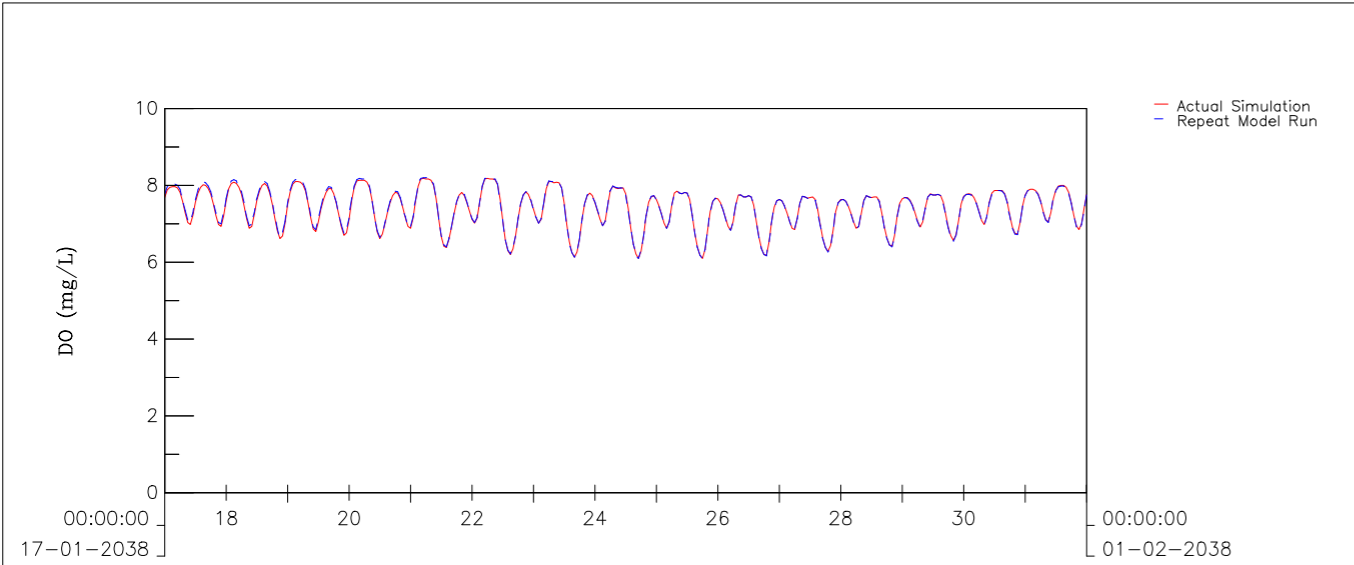


Agreement No. CE 6/2019 (DS) Hung Shui Kiu Effluent Polishing Plant and Yuen Long South Effluent Polishing Plant – Investigation Water Level, Depth Averaged Current Velocity and Direction at NM5 in Wet Season Model results – Red: Base Case; Dashed Blue: Repeat Model Run	Wet Season	Oct 2021
	Appendix 5.12– 08	
AECOM	/GPP/	Spchk.ssn

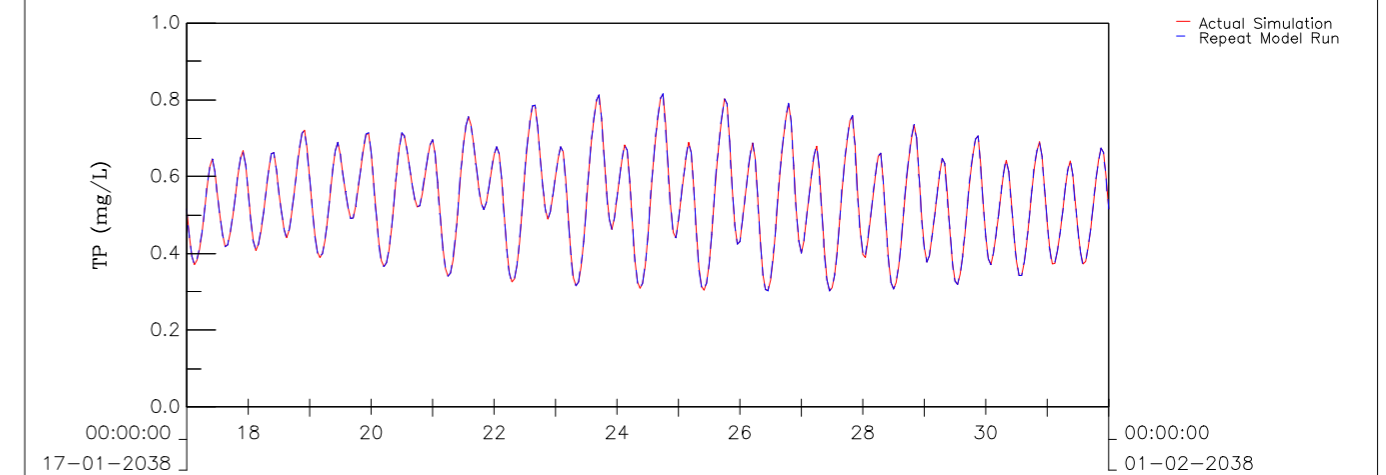
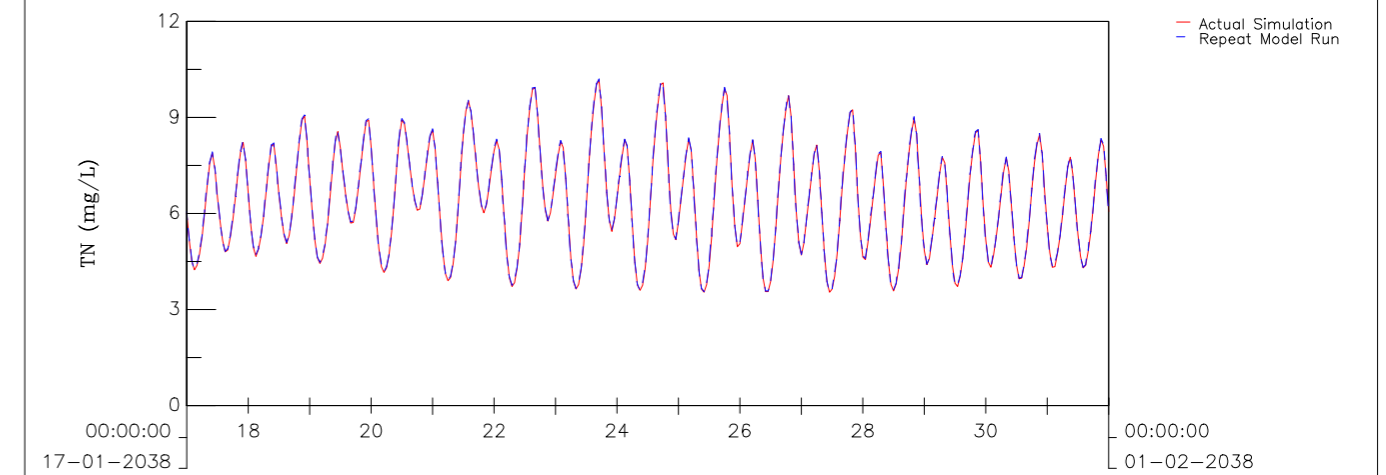
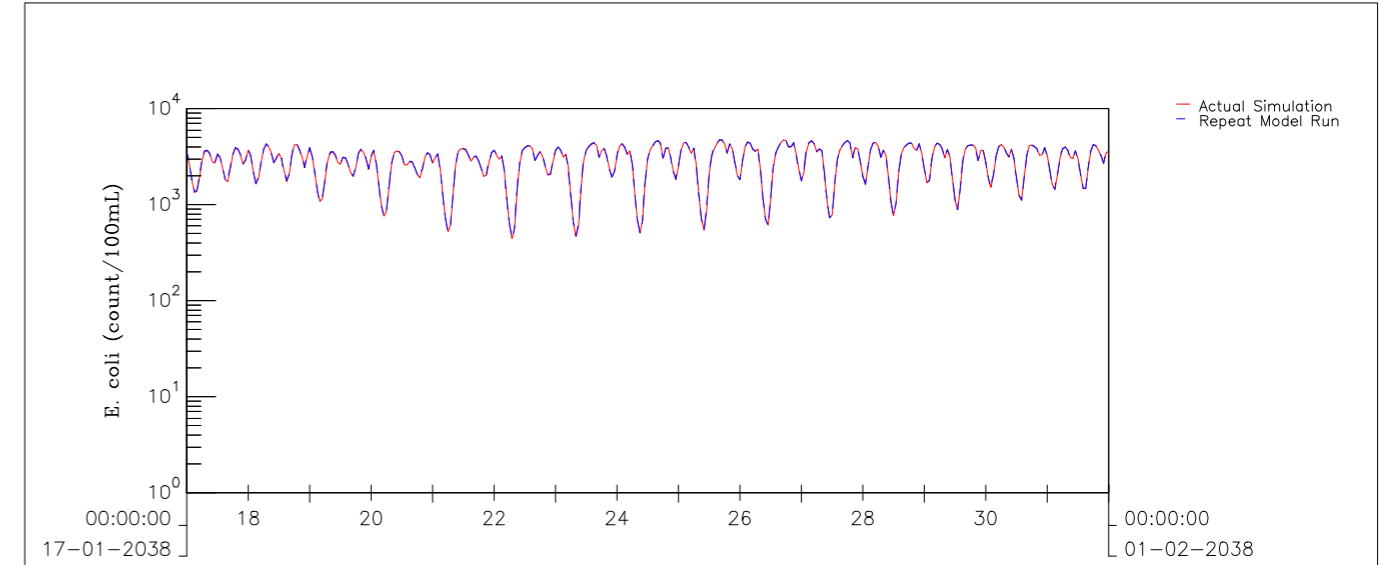


Agreement No. CE 6/2019 (DS) Hung Shui Kiu Effluent Polishing Plant and Yuen Long South Effluent Polishing Plant – Investigation Surface, Mid-Depth and Bottom Salinity at NM5 in Wet Season Model results – Red: Base Case; Dashed Blue: Repeat Model Run	Wet Season	Oct 2021
	Appendix 5.12– 09	
AECOM	/GPP/	Spchk.ssn

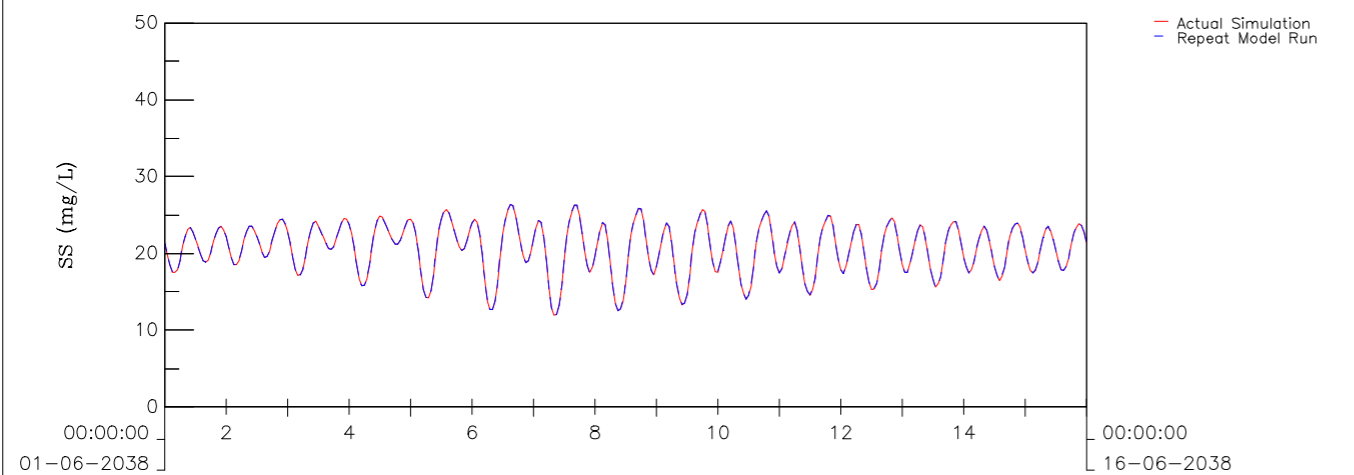
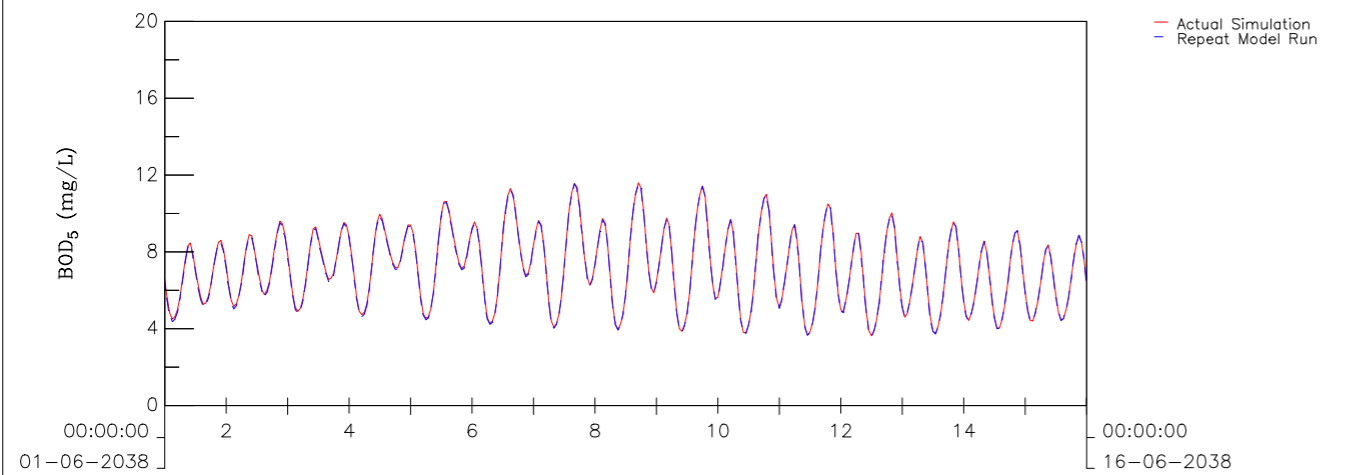
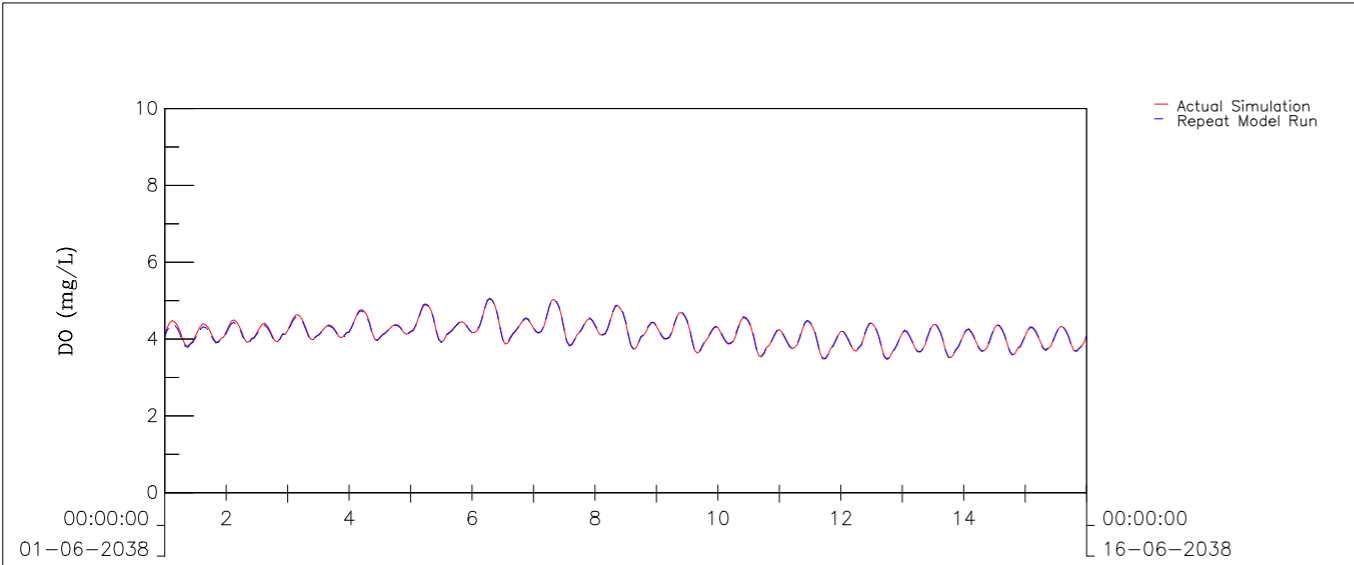
Agreement No. CE 6/2019 (DS) Hung Shui Kiu Effluent Polishing Plant and Yuen Long South Effluent Polishing Plant – Investigation Surface, Mid-Depth and Bottom Temperature at NM5 in Wet Season Model results – Red: Base Case; Dashed Blue: Repeat Model Run	Wet Season	Oct 2021
	Appendix 5.12– 10	
AECOM	/GPP/	Spchk.ssn



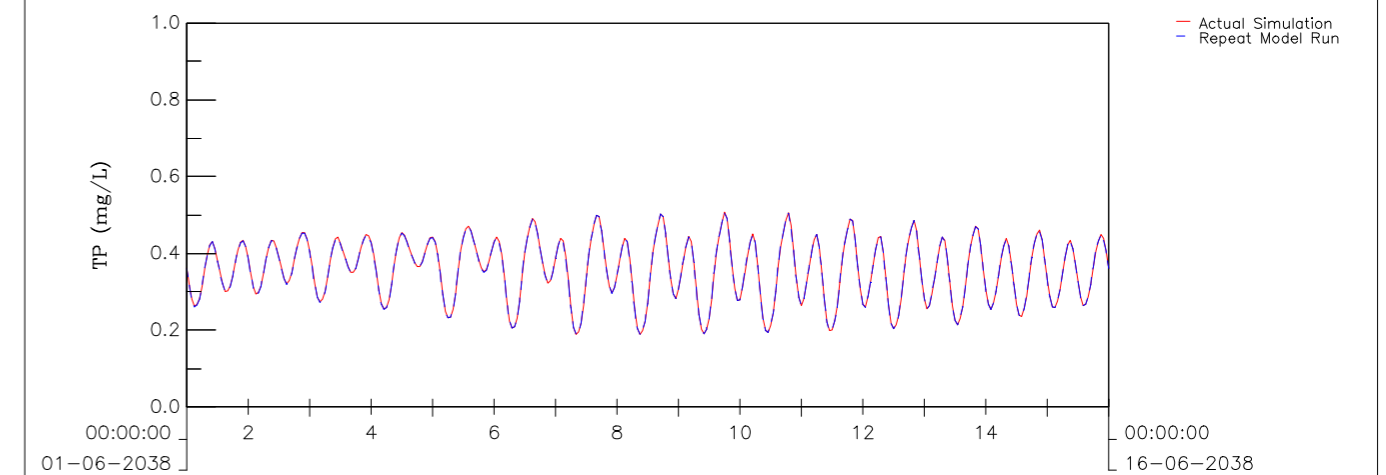
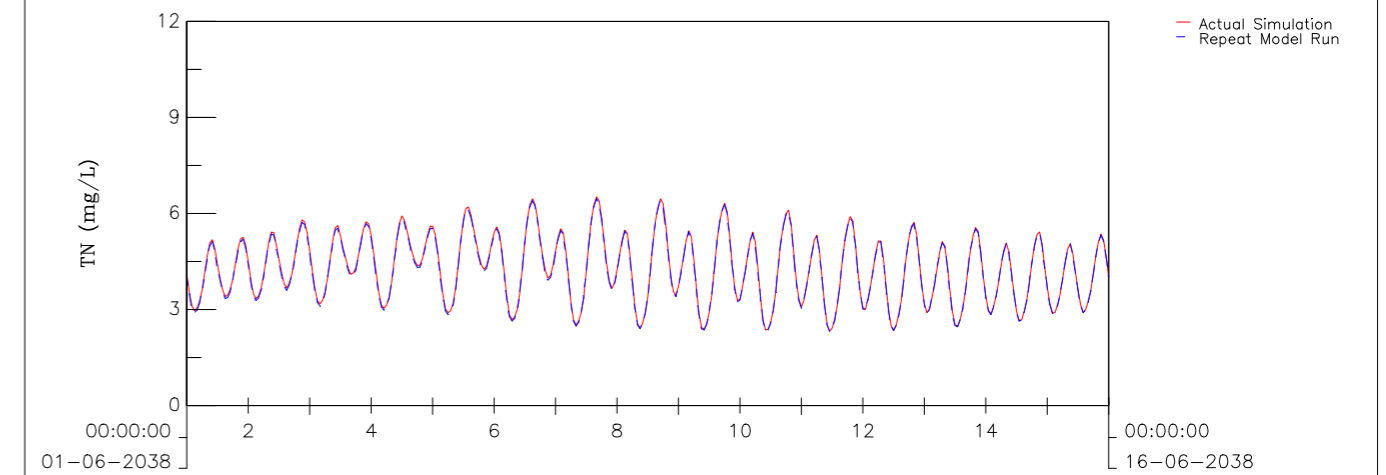
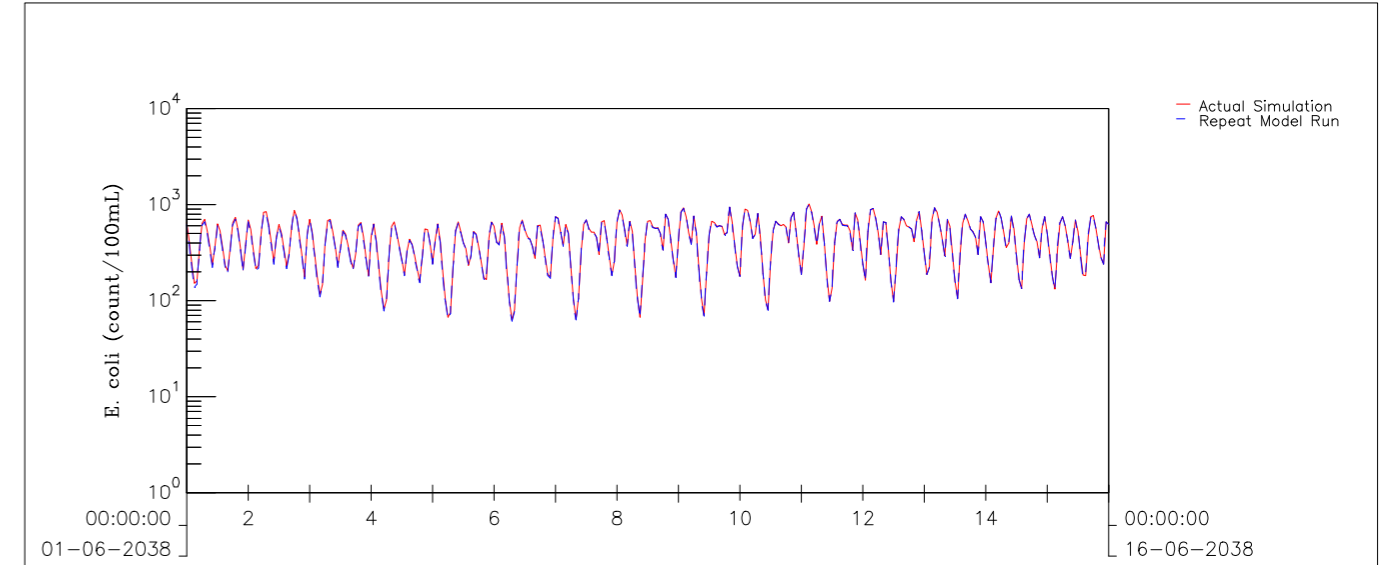
Agreement No. CE 6/2019 (DS) Hung Shui Kiu Effluent Polishing Plant and Yuen Long South Effluent Polishing Plant – Investigation Depth Averaged DO, BOD <sub>5</sub> and SS at DM2 in Dry Season Model results – Red: Base Case; Dashed Blue: Repeat Model Run	Dry Season	Oct 2021
	Appendix 5.12– 11	
AECOM	/GPP/	Spchk.ssn



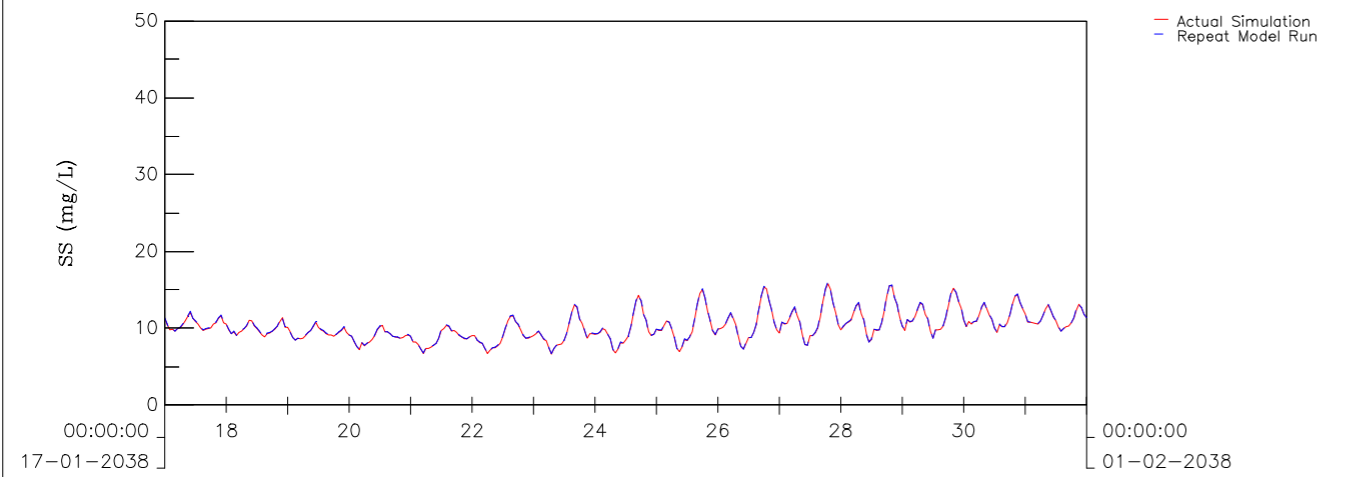
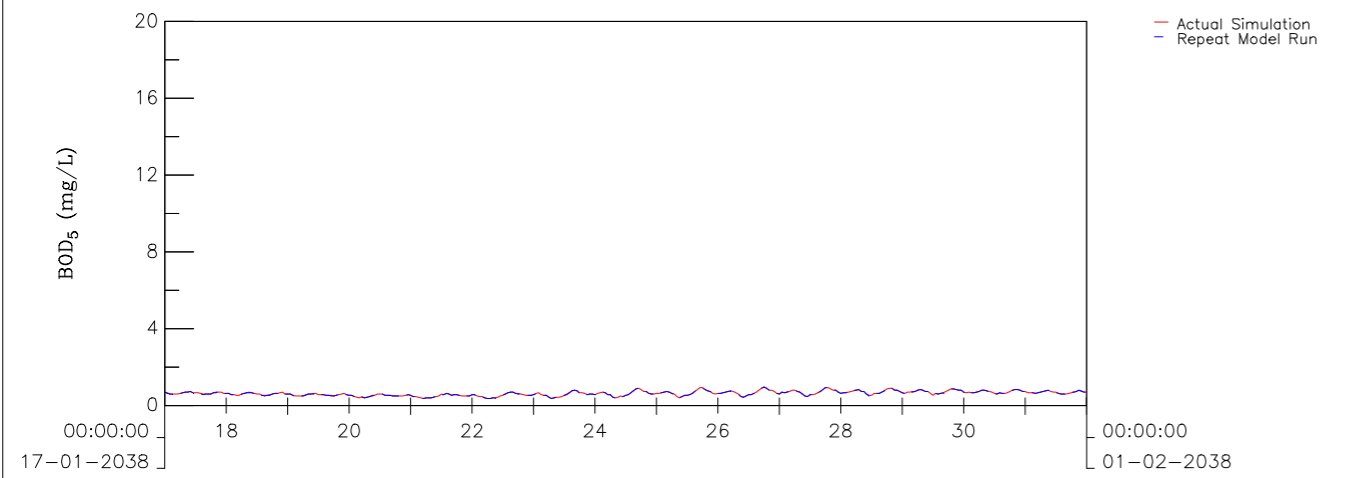
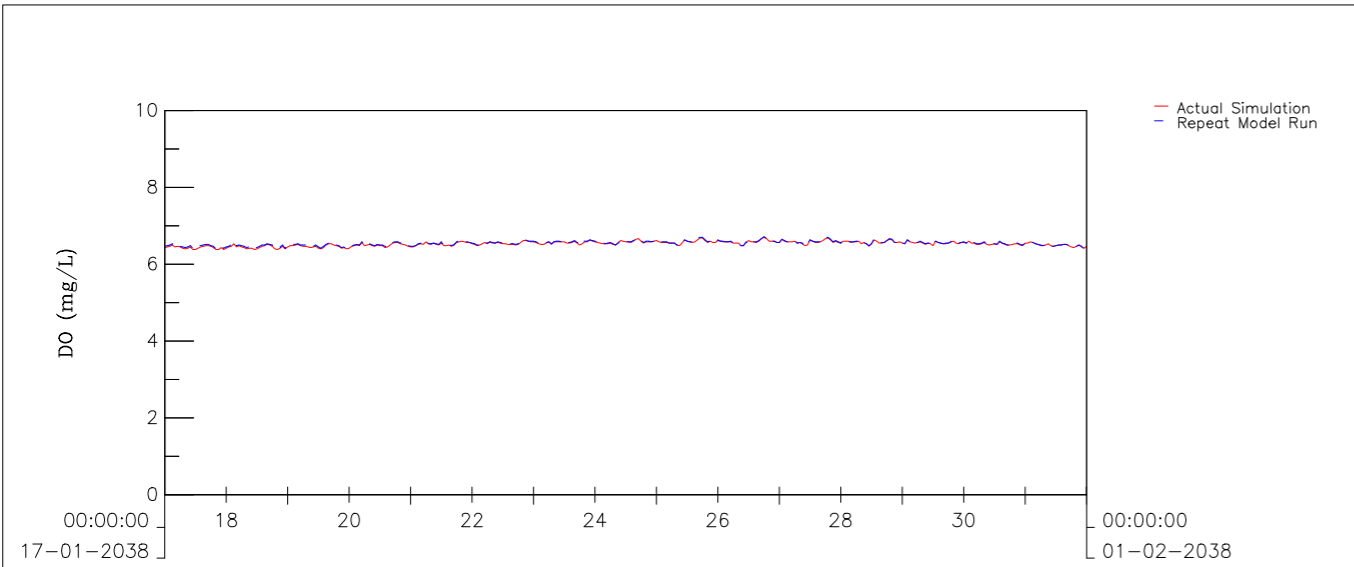
Agreement No. CE 6/2019 (DS) Hung Shui Kiu Effluent Polishing Plant and Yuen Long South Effluent Polishing Plant – Investigation Depth Averaged E. coli, TN and TP at DM2 in Dry Season Model results – Red: Base Case; Dashed Blue: Repeat Model Run	Dry Season	Oct 2021
	Appendix 5.12– 12	
AECOM	/GPP/	Spchk.ssn



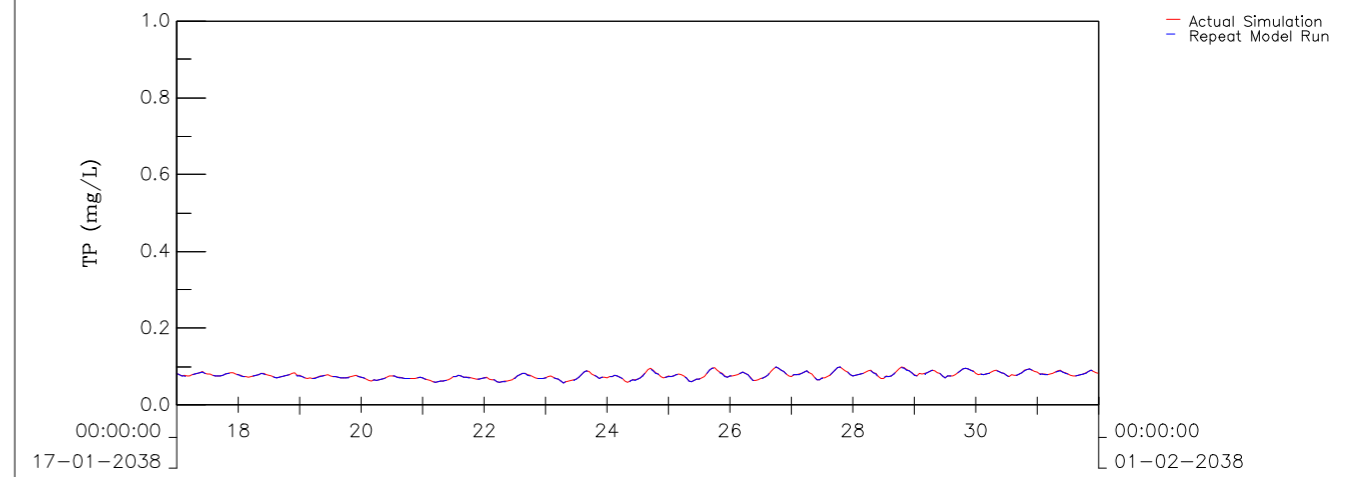
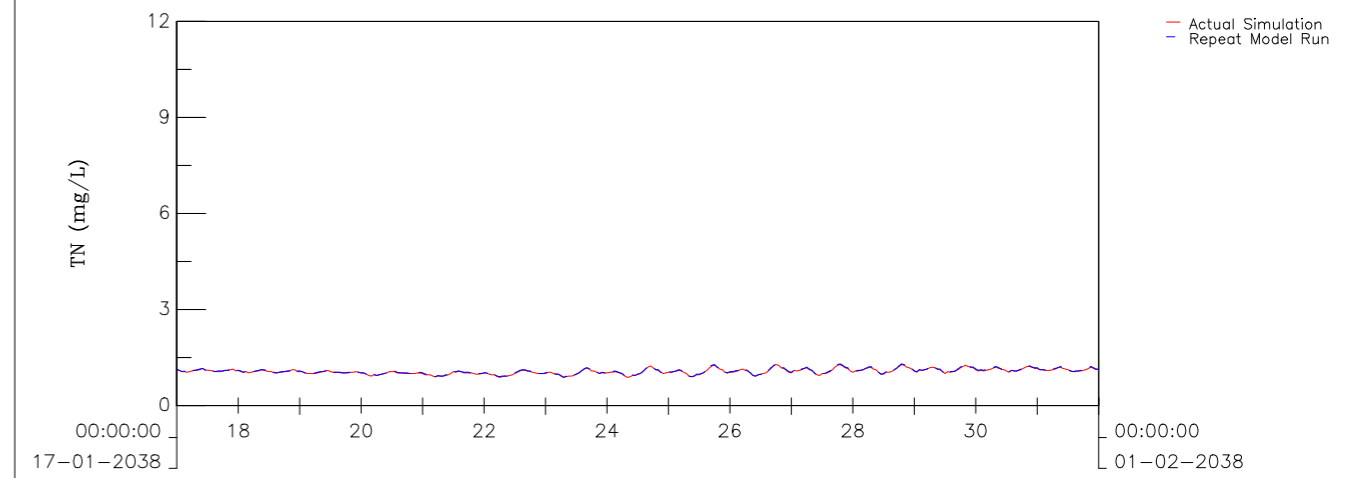
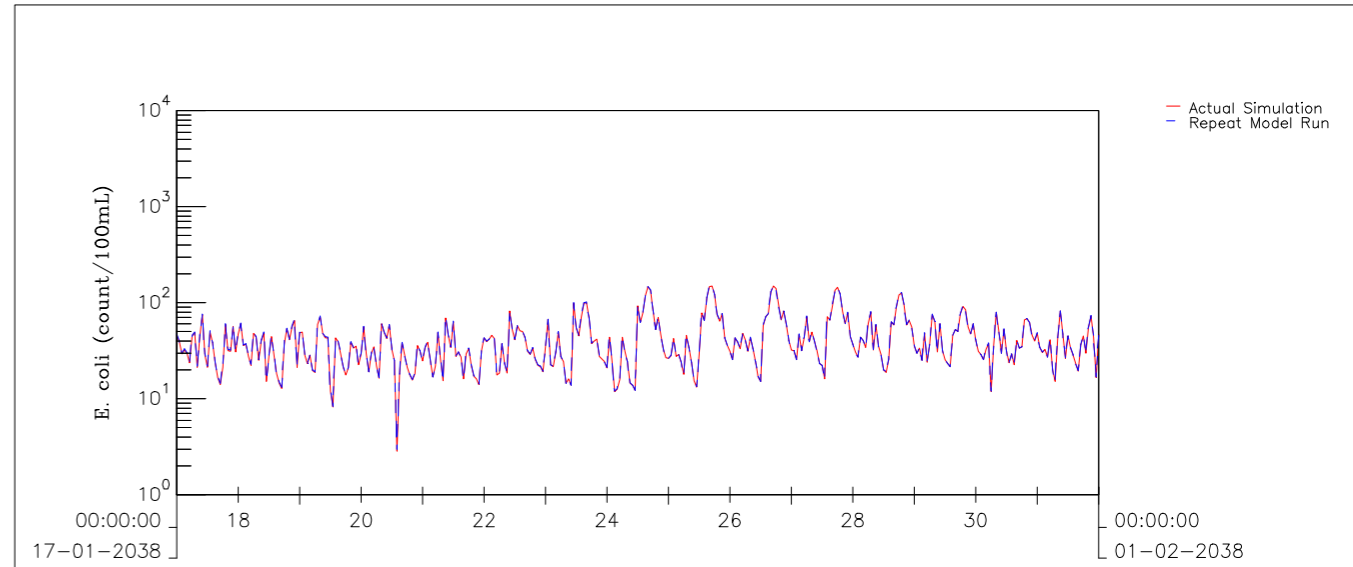
Agreement No. CE 6/2019 (DS) Hung Shui Kiu Effluent Polishing Plant and Yuen Long South Effluent Polishing Plant – Investigation Depth Averaged DO, BOD <sub>5</sub> and SS at DM2 in Wet Season Model results – Red: Base Case; Dashed Blue: Repeat Model Run	Wet Season	Oct 2021
	Appendix 5.12– 13	
AECOM	/GPP/	Spchk.ssn



Agreement No. CE 6/2019 (DS) Hung Shui Kiu Effluent Polishing Plant and Yuen Long South Effluent Polishing Plant – Investigation Depth Averaged E. coli, TN and TP at DM2 in Wet Season Model results – Red: Base Case; Dashed Blue: Repeat Model Run	Wet Season	Oct 2021
	Appendix 5.12– 14	
AECOM	/GPP/	Spchk.ssn

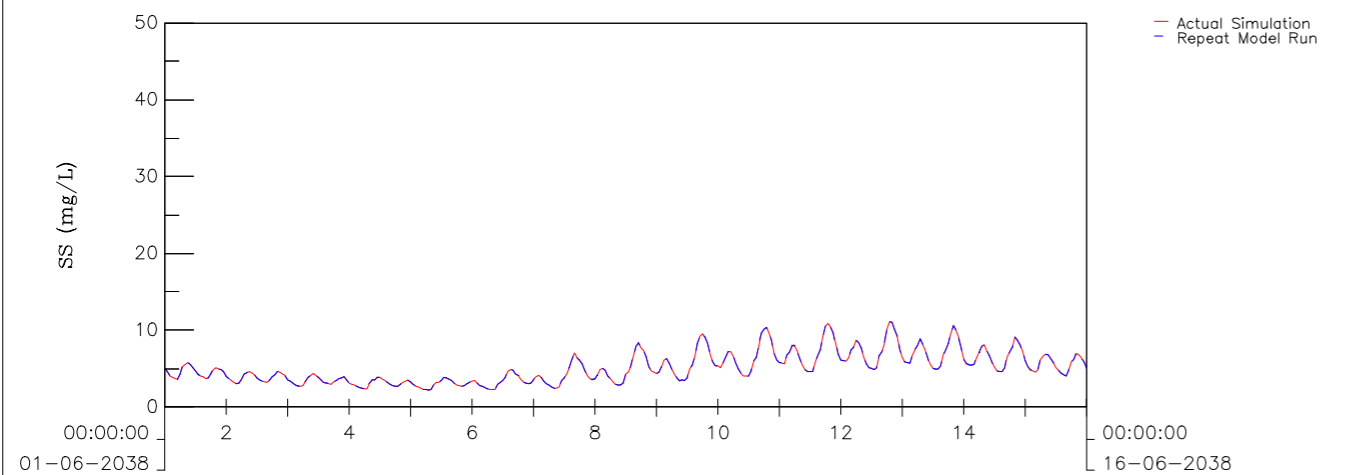
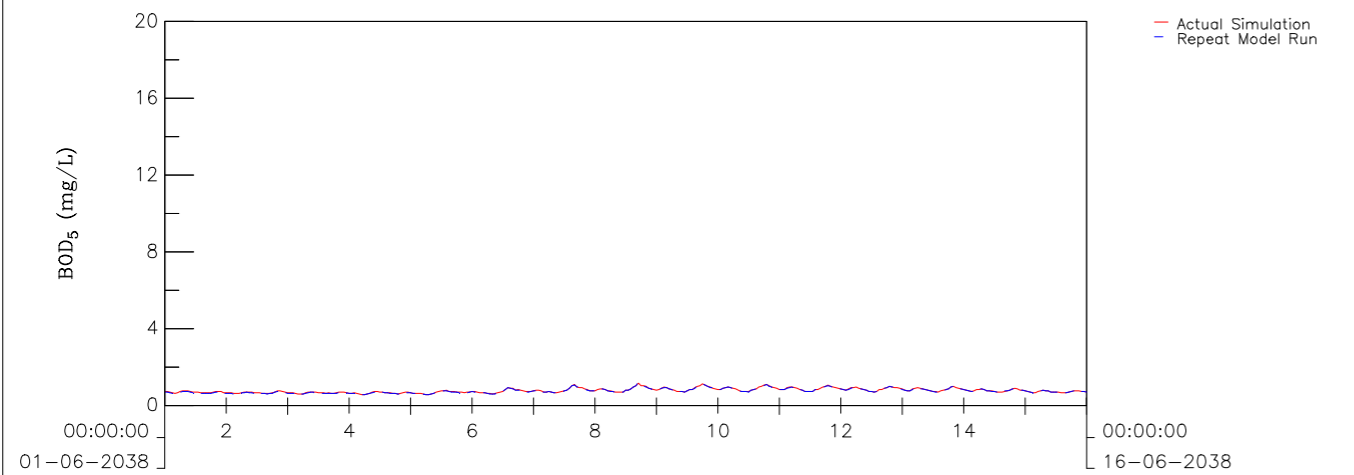
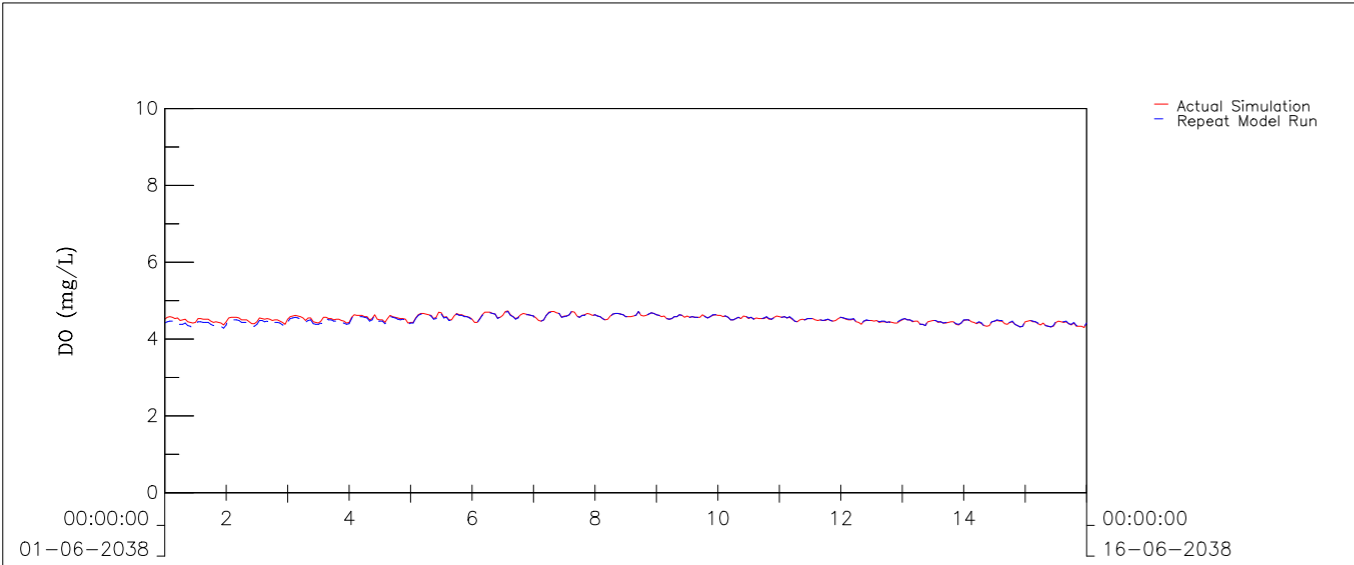


Agreement No. CE 6/2019 (DS) Hung Shui Kiu Effluent Polishing Plant and Yuen Long South Effluent Polishing Plant – Investigation Depth Averaged DO, BOD <sub>5</sub> and SS at NM5 in Dry Season Model results – Red: Base Case; Dashed Blue: Repeat Model Run		Dry Season	Oct 2021
AECOM		Appendix 5.12– 15	
		/GPP/	Spchk.ssn

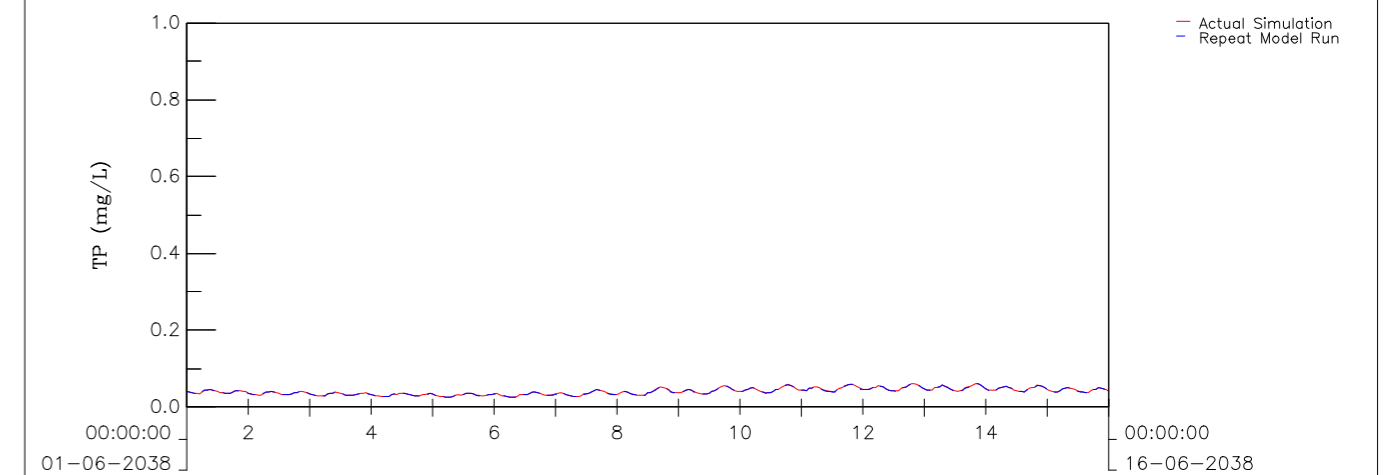
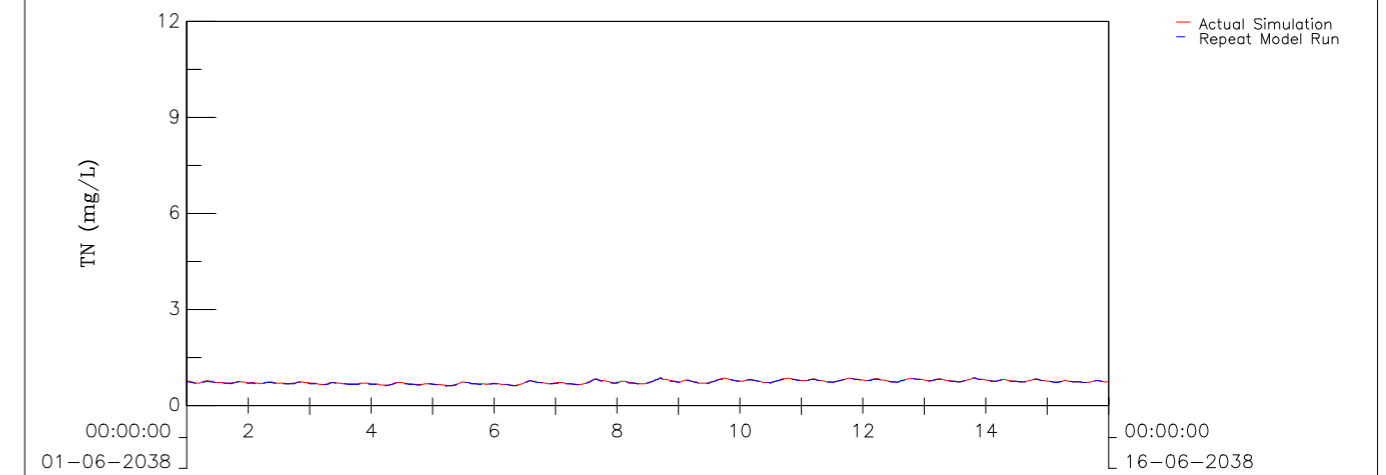
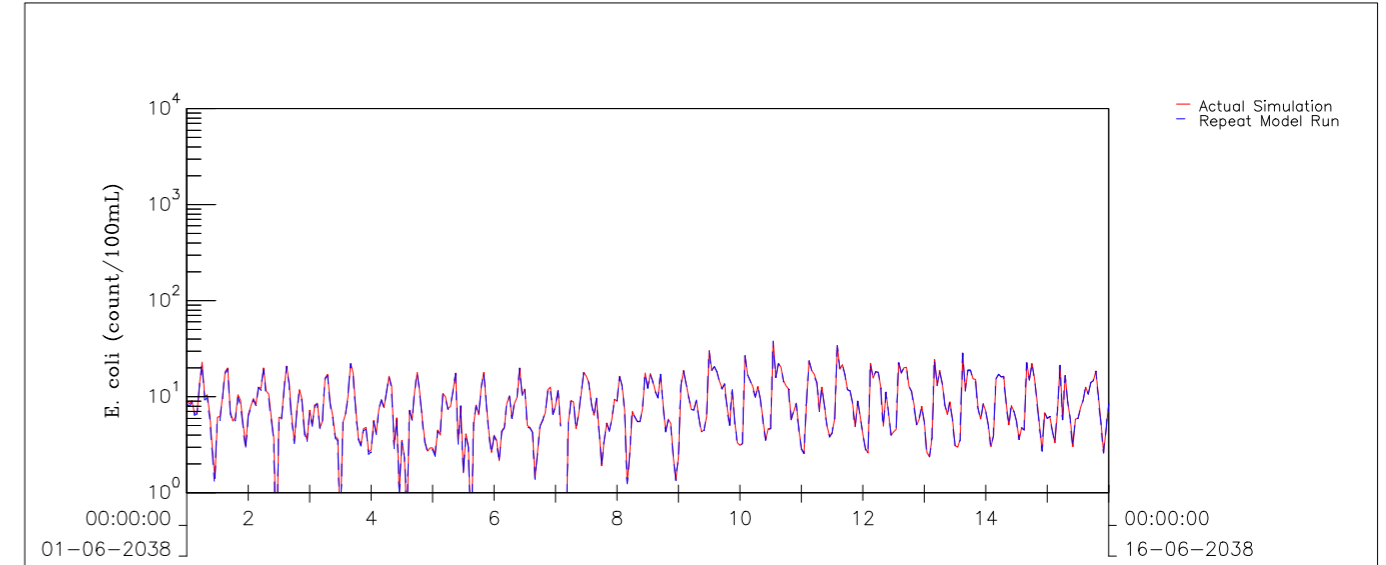


Agreement No. CE 6/2019 (DS) Hung Shui Kiu Effluent Polishing Plant and Yuen Long South Effluent Polishing Plant – Investigation Depth Averaged E. coli, TN and TP at NM5 in Dry Season Model results – Red: Base Case; Dashed Blue: Repeat Model Run		Dry Season	Oct 2021
AECOM		Appendix 5.12– 16	
		/GPP/	Spchk.ssn





Agreement No. CE 6/2019 (DS) Hung Shui Kiu Effluent Polishing Plant and Yuen Long South Effluent Polishing Plant – Investigation Depth Averaged DO, BOD <sub>5</sub> and SS at NM5 in Wet Season Model results – Red: Base Case; Dashed Blue: Repeat Model Run	Wet Season	Oct 2021
	Appendix 5.12– 17	
AECOM	/GPP/	Spchk.ssn



Agreement No. CE 6/2019 (DS) Hung Shui Kiu Effluent Polishing Plant and Yuen Long South Effluent Polishing Plant – Investigation Depth Averaged E. coli, TN and TP at NM5 in Wet Season Model results – Red: Base Case; Dashed Blue: Repeat Model Run	Wet Season	Oct 2021
	Appendix 5.12– 18	
AECOM	/GPP/	Spchk.ssn

**[Blank]**