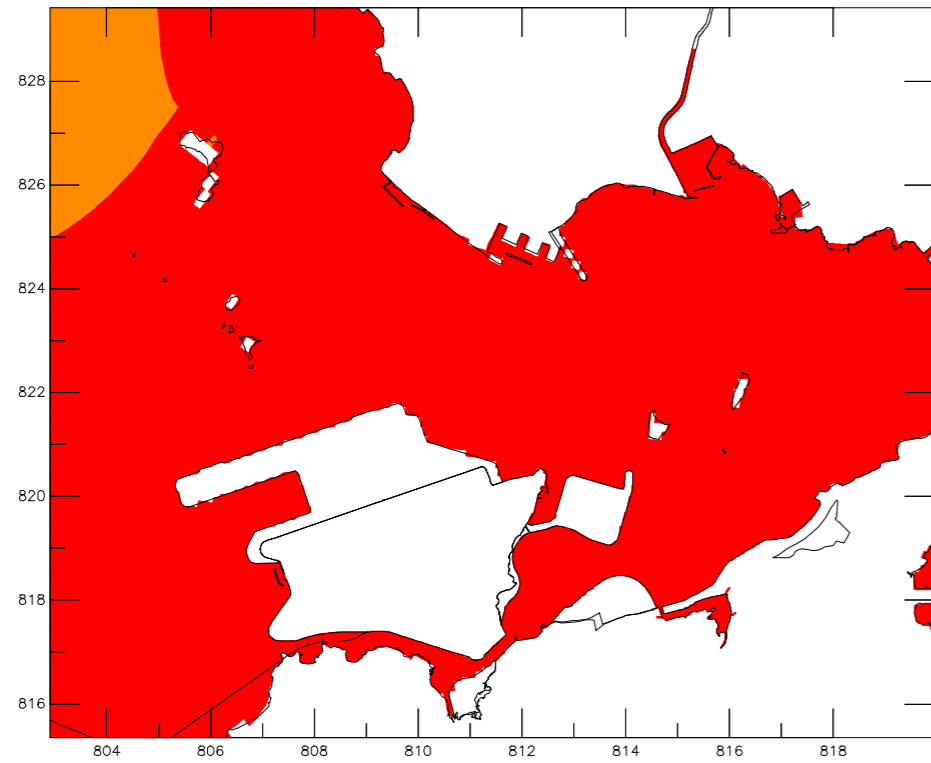


Hung Shui Kiu Effluent Polishing Plant and Yuen Long South Effluent Polishing Plant Investigation Mean Sedimentation Rate ($\text{g}/\text{m}^2/\text{day}$) (North Western WCZ)	Dry Season
	Appendix 5.3 – 09
AECOM	/GPP OpWQ-d.ssn

Hung Shui Kiu Effluent Polishing Plant and Yuen Long South Effluent Polishing Plant Investigation Maximum Sedimentation Rate ($\text{g}/\text{m}^2/\text{day}$) (North Western WCZ)	Dry Season
	Appendix 5.3 – 10
AECOM	/GPP OpWQ-d.ssn

Scenario 1 – Base Case
[Urmston Road Submarine Outfall]



Scenario 2 – Normal Operation
[Urmston Road Submarine Outfall]

