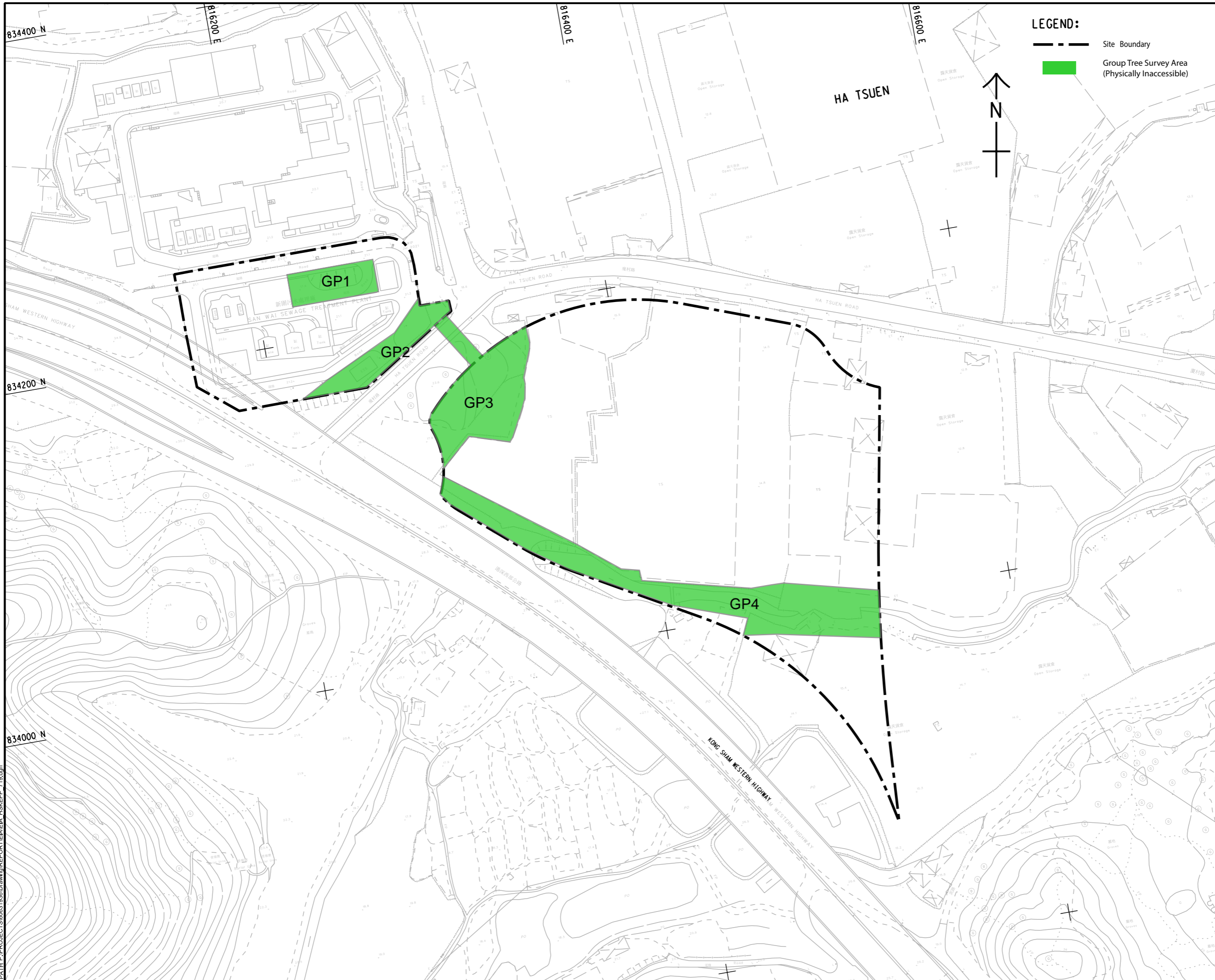


Tree Assessment Schedule (Group Survey)



| Drawing No. | Tree Group No. | Photo View No. | Species | | Measurements | | | Appx. Quantity of the group | Amenity Value | Form | Health | Structural condition | Suitability for Transplanting | | Conservation Status | Recommendation: retain (R) / transplant (T) / remove (F) | | | | Justification | Maintenance department to provide comments on TPRP | | Additional Remarks |
|-----------------------------------|----------------|-----------------|---------------------------------|--------------|--------------|----------|------------------|-----------------------------|----------------------------|------|--------|----------------------|-------------------------------|----------------------------|---------------------|--|----------|---|-----|----------------------------|--|--------|--------------------|
| | | | Scientific name | Chinese name | Height (m) | DBH (mm) | Crown spread (m) | | (high(H)/medium(M)/low(L)) | | | | (good(G)/average(A)/poor(P)) | (high(H)/medium(M)/low(L)) | | Remarks | % Retain | R | T | | F | Before | |
| 60631936/EIA/HS KEPP/APPENDIX 9.1 | GP1 | GP1_V1, V2 & V3 | <i>Artocarpus heterophyllus</i> | 波羅蜜 | 6 | 120 | 3 | 1 | M | A | A | A | L | b,c | NIL | 0% Retained | 0 | 0 | 17 | Direct conflict with works | DSD | DSD | NIL |
| | | | <i>Dimocarpus longan</i> | 龍眼 | 5 | 200 | 4 | 1 | M | A | A | A | L | b,c | NIL | | | | | | | | |
| | | | <i>Ficus benjamina</i> | 垂葉榕 | 5-8 | 200-400 | 4-5 | 15 | M | A | A | A | L | b,c,d | NIL | | | | | | | | |
| | | | sub-total | | | 17 | | | | | | | | | | | | | | | | | |
| 60631936/EIA/HS KEPP/APPENDIX 9.1 | GP2 | GP2_V1, V2 & V3 | <i>Acacia confusa</i> | 台灣相思 | 7-10 | 200-400 | 5-9 | 14 | M | A | A | A | L | b,c,d,h | NIL | 0% Retained | 0 | 0 | 40 | Direct conflict with works | DSD | DSD | NIL |
| | | | <i>Celtis sinensis</i> | 朴樹 | 6-9 | 120-300 | 4-8 | 4 | M | A | A | A | L | b,c,d,h | NIL | | | | | | | | |
| | | | <i>Leucaena leucocephala</i> | 銀合歡 | 6-9 | 95-280 | 3-5 | 20 | M | A | A | A | L | b,c,g,h | NIL | | | | | | | | |
| | | | <i>Macaranga tanarius</i> | 血桐 | 4-5 | 95-120 | 3-4 | 2 | L | P | A | A | L | b,c,f,h | NIL | | | | | | | | |
| sub-total | | | 40 | | | | | | | | | | | | | | | | | | | | |
| 60631936/EIA/HS KEPP/APPENDIX 9.1 | GP3 | GP3_V1, V2 & V3 | <i>Celtis sinensis</i> | 朴樹 | 3-5 | 95-100 | 1-2 | 2 | M | A | A | A | L | b,c | NIL | 0% Retained | 0 | 0 | 45 | Direct conflict with works | LandsD | DSD | NIL |
| | | | <i>Ficus benjamina</i> | 垂葉榕 | 8-10 | 200-300 | 4-5 | 5 | M | A | A | A | L | b,c,d | NIL | | | | | | | | |
| | | | <i>Ficus hispida</i> | 對葉榕 | 4-8 | 95-300 | 2-5 | 9 | L | P | A | A | L | b,c,d,f | NIL | | | | | | | | |
| | | | <i>Leucaena leucocephala</i> | 銀合歡 | 5 | 95 | 3 | 1 | M | A | A | A | L | b,c,g | NIL | | | | | | | | |
| | | | <i>Litchi chinensis</i> | 荔枝 | 4-8 | 200-300 | 4-7 | 3 | M | A | A | A | L | b,c,d | NIL | | | | | | | | |
| | | | <i>Macaranga tanarius</i> | 血桐 | 5-8 | 150-280 | 5-7 | 24 | L | P | A | A | L | b,c,d,f | NIL | | | | | | | | |
| | | | <i>Schefflera heptaphylla</i> | 鵝掌柴 | 4 | 100 | 3 | 1 | M | A | A | A | L | b,c | NIL | | | | | | | | |
| sub-total | | | 45 | | | | | | | | | | | | | | | | | | | | |
| 60631936/EIA/HS KEPP/APPENDIX 9.1 | GP4 | GP4_V1, V2 & V3 | <i>Acacia auriculiformis</i> | 耳果相思 | 5-9 | 100-250 | 3-5 | 17 | M | A | A | A | L | b,c,d | NIL | 0% Retained | 0 | 0 | 122 | Direct conflict with works | LandsD | DSD | NIL |
| | | | <i>Dimocarpus longan</i> | 龍眼 | 8-9 | 300-400 | 7-8 | 2 | M | A | A | A | L | b,c,d | NIL | | | | | | | | |
| | | | <i>Ficus benjamina</i> | 垂葉榕 | 8-9 | 250-300 | 5-6 | 2 | M | A | A | A | L | b,c,d | NIL | | | | | | | | |
| | | | <i>Ficus hispida</i> | 對葉榕 | 3-4 | 95-150 | 2-3 | 2 | L | P | A | A | L | b,c,f | NIL | | | | | | | | |
| | | | <i>Leucaena leucocephala</i> | 銀合歡 | 5-9 | 95-300 | 1-5 | 68 | M | A | A | A | L | b,c,g | NIL | | | | | | | | |
| | | | <i>Macaranga tanarius</i> | 血桐 | 4-8 | 95-200 | 3-6 | 30 | L | P | A | A | L | b,c,f | NIL | | | | | | | | |
| | | | <i>Mangifera indica</i> | 芒果 | 8 | 200 | 5 | 1 | M | A | A | A | L | b,c | NIL | | | | | | | | |
| sub-total | | | 122 | | | | | | | | | | | | | | | | | | | | |
| Total | | | 224 | | | | | | | | | | | | | | | | | | | | |

Remarks for Suitability for Transplanting

- (a) Low amenity value;
- (b) Irrecoverable form after transplanting (e.g. transplanting requires substantial crown and root pruning);
- (c) Low chance of survival upon transplanting;
- (d) Very large size (unless the feasibility to transplant has been considered financially reasonable and technically feasible during the feasibility stage);
- (e) With evidence of over-maturity and onset of senescence;
- (f) With poor health, structure or form (e.g. imbalanced form, leaning, with major cavity/cracks/splits);
- (g) Undesirable species (e.g. *Leucaena leucocephala* which is an invasive exotic and self-seeding tree); or
- (h) Trees grown under poor conditions which have limited the formation of proper root ball necessary for transplanting (e.g. on steep slope).



LEGEND:

-  Site Boundary
-  Group Tree Survey Area (Physically Inaccessible)



PROJECT

HUNG SHUI KIU
EFFLUENT POLISHING
PLANT AND
YUEN LONG SOUTH
EFFLUENT POLISHING
PLANT - INVESTIGATION

CLIENT



CONSULTANT

AECOM Asia Company Ltd.
www.aecom.com

SUB-CONSULTANTS

ISSUE/REVISION

| I/R | DATE | DESCRIPTION | CHK. |
|-----|------|-------------|------|
| | | | |
| | | | |
| | | | |
| | | | |

STATUS

SCALE DIMENSION UNIT

A1 1 : 1000 METRES

KEY PLAN

PROJECT NO. CONTRACT NO.

60631936 CE 6/2019 (DS)

SHEET TITLE

Tree Survey Plan

SHEET NUMBER

60631936/EIA/HSKEPP/APPENDIX 9.1

This drawing has been prepared for the use of AECOM's client. It may not be used, modified, reproduced or relied upon by third parties, except as agreed by AECOM or as required by law. AECOM accepts no responsibility, and denies any liability whatsoever, for any part that is less or relies on this drawing without AECOM's express written consent. All measurements must be obtained from the stated dimensions.



GP1_V1



GP1_V2



GP1_V3



GP2_V1



GP2_V2



GP2_V3



GP3_V1



GP3_V2



GP3_V3



GP4_V1



GP4_V2



GP4_V3