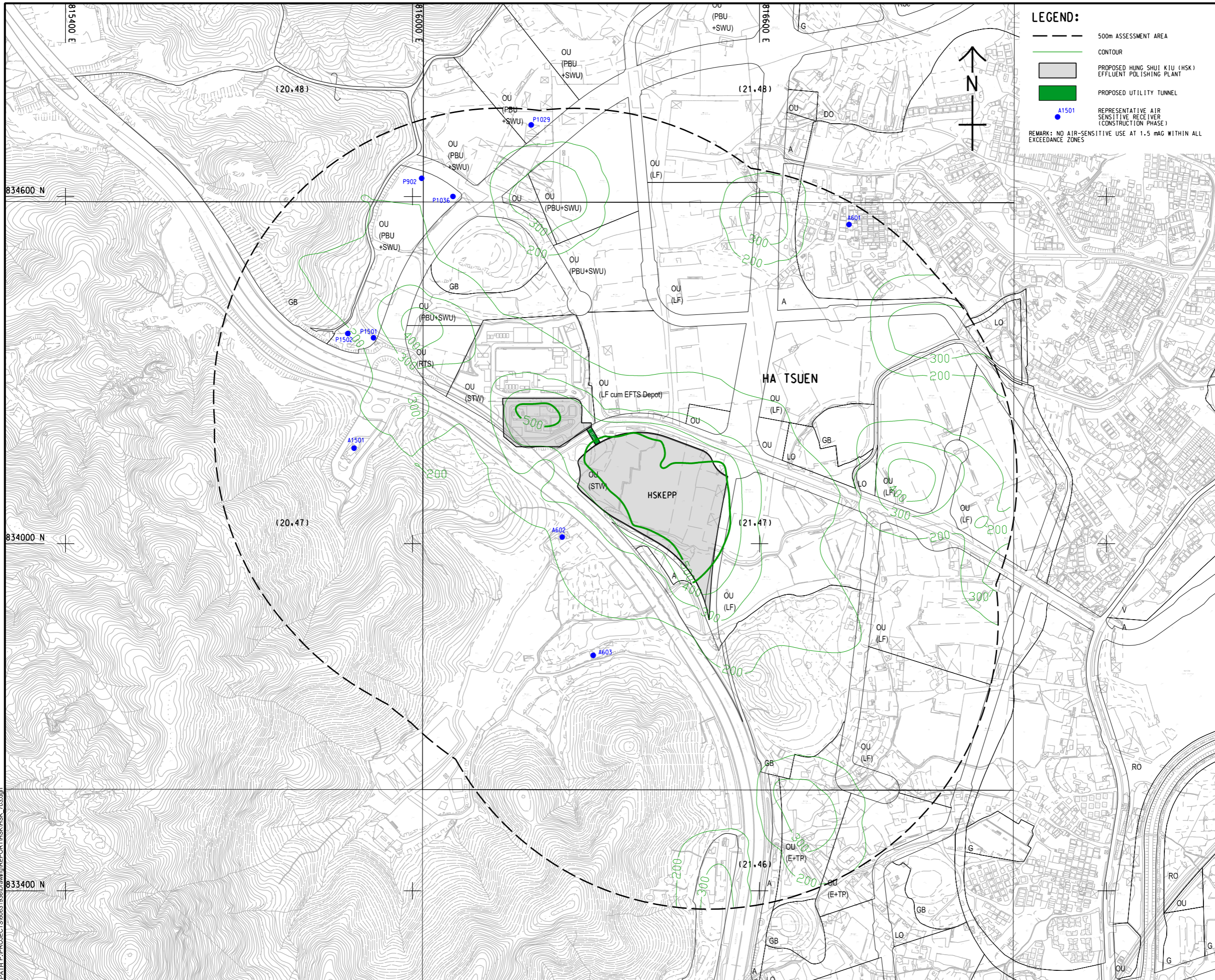


ISO A1 594mm x 841mm  
 Approved:  
 Checked:  
 Designer:  
 Project Management Initials:  
 Plot File by: ZHUJCC 2022/11/22  
 PATH: P:\PROJECTS\60631936\DRAWING\REPORT\HSK\HSK\_703.dgn



**LEGEND:**

- 500m ASSESSMENT AREA
- CONTOUR
- PROPOSED HUNG SHUI KIU (HSK) EFFLUENT POLISHING PLANT
- PROPOSED UTILITY TUNNEL
- A1501 REPRESENTATIVE AIR SENSITIVE RECEIVER (CONSTRUCTION PHASE)

REMARK: NO AIR-SENSITIVE USE AT 1.5 mAG WITHIN ALL EXCEEDANCE ZONES

**AECOM**

**PROJECT**  
 HUNG SHUI KIU EFFLUENT POLISHING PLANT AND YUEN LONG SOUTH EFFLUENT POLISHING PLANT - INVESTIGATION

**CLIENT**  
 渠務署  
 Drainage Services Department

**CONSULTANT**  
 AECOM Asia Company Ltd.  
 www.aecom.com

**SUB-CONSULTANTS**

**ISSUE/REVISION**

IR	DATE	DESCRIPTION	CHK.

**STATUS**

**SCALE**  
 A1 1 : 3000

**DIMENSION UNIT**  
 METRES

**KEY PLAN**

**PROJECT NO.**  
 60631936

**CONTRACT NO.**  
 CE 6/2019 (DS)

**SHEET TITLE**  
 CONTOUR OF PREDICTED MAXIMUM CUMULATIVE HOURLY TSP CONCENTRATION AT 1.5 mAG (µg/m³) (CONSTRUCTION PHASE, MITIGATED)

**SHEET NUMBER**  
 60631936/HSK/FIGURE 3.3

This drawing has been prepared for the use of AECOM's client. It may not be used, modified, reproduced or relied upon by third parties, except as agreed by AECOM or as required by law. AECOM accepts no responsibility, and disclaims any liability whatsoever, for any part, that, in whole or in part, is based on this drawing without AECOM's express written consent. All measurements must be obtained from the stated dimensions.