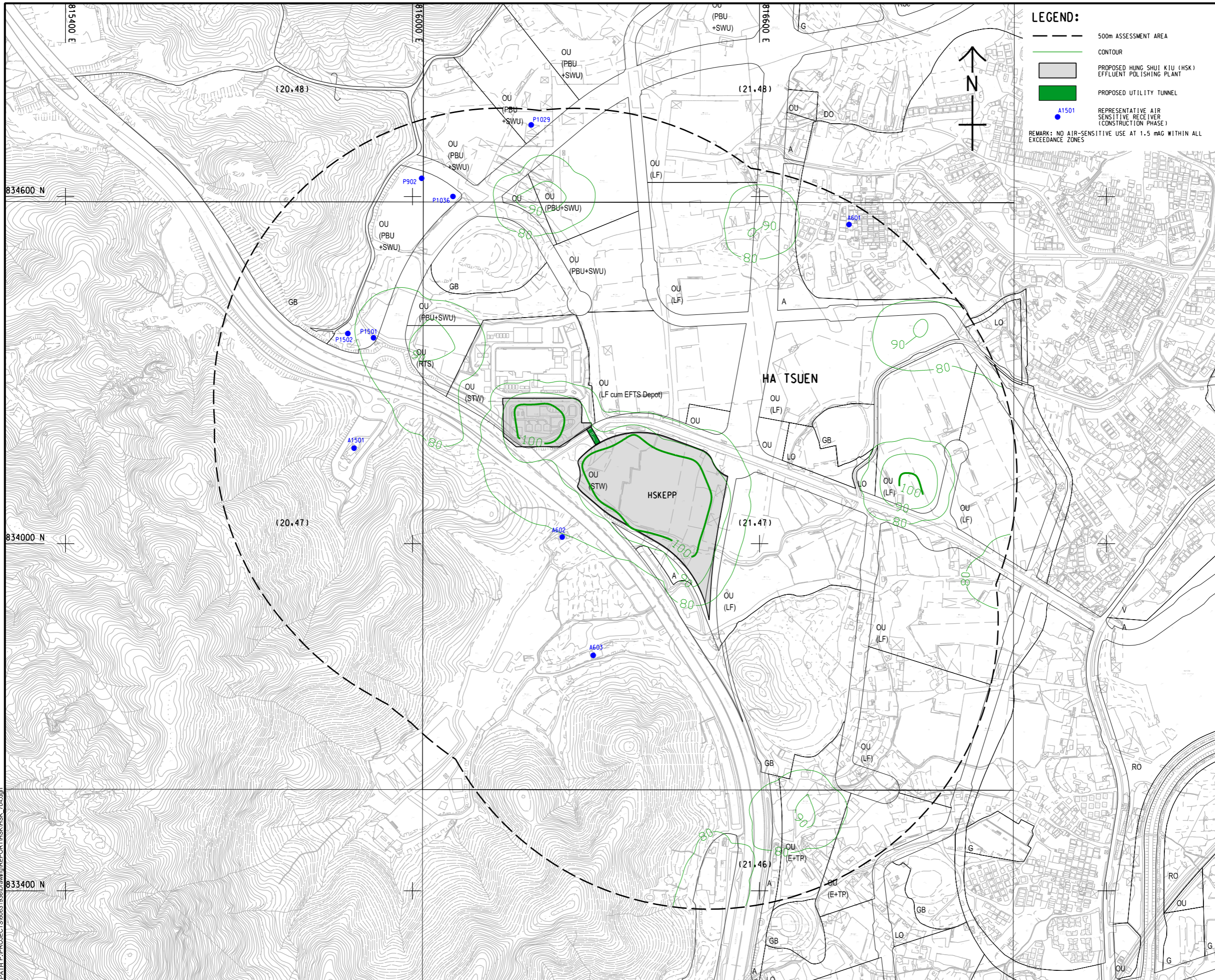


ISO A1 594mm x 841mm
 Approved:
 Checked:
 Designer:
 Project Management Initials:
 Plot File by: ZHUJCC 2022/11/22
 PATH: P:\PROJECTS\60631936\DRAWING\REPORT\HSK\704.dgn



LEGEND:

- 500m ASSESSMENT AREA
- CONTOUR
- PROPOSED HUNG SHUI KIU (HSK) EFFLUENT POLISHING PLANT
- PROPOSED UTILITY TUNNEL
- REPRESENTATIVE AIR SENSITIVE RECEIVER (CONSTRUCTION PHASE)
- REMARK: NO AIR-SENSITIVE USE AT 1.5 mAG WITHIN ALL EXCEEDANCE ZONES

AECOM

PROJECT
 HUNG SHUI KIU EFFLUENT POLISHING PLANT AND YUEN LONG SOUTH EFFLUENT POLISHING PLANT - INVESTIGATION

CLIENT
 渠務署
 Drainage Services Department

CONSULTANT
 AECOM Asia Company Ltd.
 www.aecom.com

SUB-CONSULTANTS

ISSUE/REVISION

I/R	DATE	DESCRIPTION	CHK.

STATUS

SCALE **DIMENSION UNIT**
 A1 1 : 3000 METRES

KEY PLAN

PROJECT NO. **CONTRACT NO.**
 60631936 CE 6/2019 (DS)

SHEET TITLE
 CONTOUR OF PREDICTED 10TH HIGHEST CUMULATIVE DAILY RSP CONCENTRATION AT 1.5 mAG (µg/m3) (CONSTRUCTION PHASE, MITIGATED)

SHEET NUMBER
 60631936/HSK/FIGURE 3.4

This drawing has been prepared for the use of AECOM's client. It may not be used, modified, reproduced or relied upon by third parties, except as agreed by AECOM or as required by law. AECOM accepts no responsibility, and disclaims any liability whatsoever, for any part, that less or relies on this drawing without AECOM's express written consent. All measurements must be obtained from the stated dimensions.