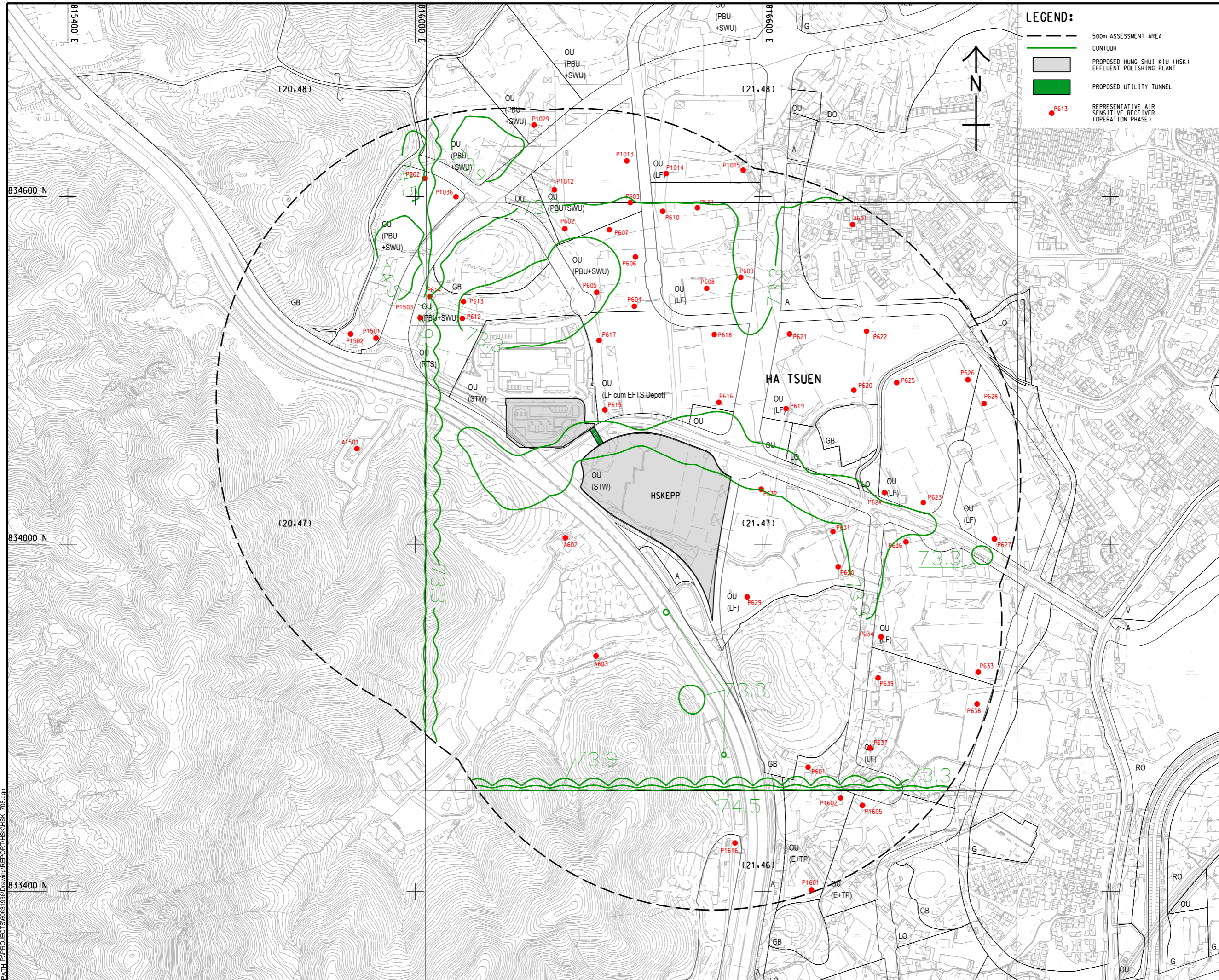


ISO A1 594mm x 841mm
 Approved:
 Checked:
 Designer:
 Project Management Initials:



LEGEND:

- 500m ASSESSMENT AREA
- CONTOUR
- PROPOSED HUNG SHUI KIU (HSK) EFFLUENT POLISHING PLANT
- PROPOSED UTILITY TUNNEL
- P613 REPRESENTATIVE AIR SENSITIVE RECEIVER (OPERATION PHASE)



AECOM

PROJECT
 HUNG SHUI KIU
 EFFLUENT POLISHING
 PLANT AND
 YUEN LONG SOUTH
 EFFLUENT POLISHING
 PLANT - INVESTIGATION

CLIENT
 渠務署
 Drainage Services Department

CONSULTANT
 AECOM Asia Company Ltd.
 www.aecom.com

SUB-CONSULTANTS

ISSUE/REVISION

IR	DATE	DESCRIPTION	CHK.

STATUS

SCALE
 A1 1 : 3000

DIMENSION UNIT
 METRES

KEY PLAN

PROJECT NO.
 60631936

CONTRACT NO.
 CE 6/2019 (DS)

SHEET TITLE
 CONTOUR OF PREDICTED 10TH
 HIGHEST CUMULATIVE DAILY RSP
 CONCENTRATION AT 1.5 mAG (µg/m3)
 (OPERATION PHASE)

SHEET NUMBER
 60631936/HSK/FIGURE 3.8

This drawing has been prepared for the use of AECOM's client. It may not be used, modified, reproduced or relied upon by third parties, except as agreed by AECOM or as required by law. AECOM accepts no responsibility, and disclaims any liability whatsoever, for any part, that less or relies on this drawing without AECOM's express written consent. All measurements must be obtained from the stated dimensions.

Plot File by: haiquan.zhao 2022/12/26
 PATH: P:\PROJECTS\60631936\Drawing\REPORT\HSK\HSK_708.dgn