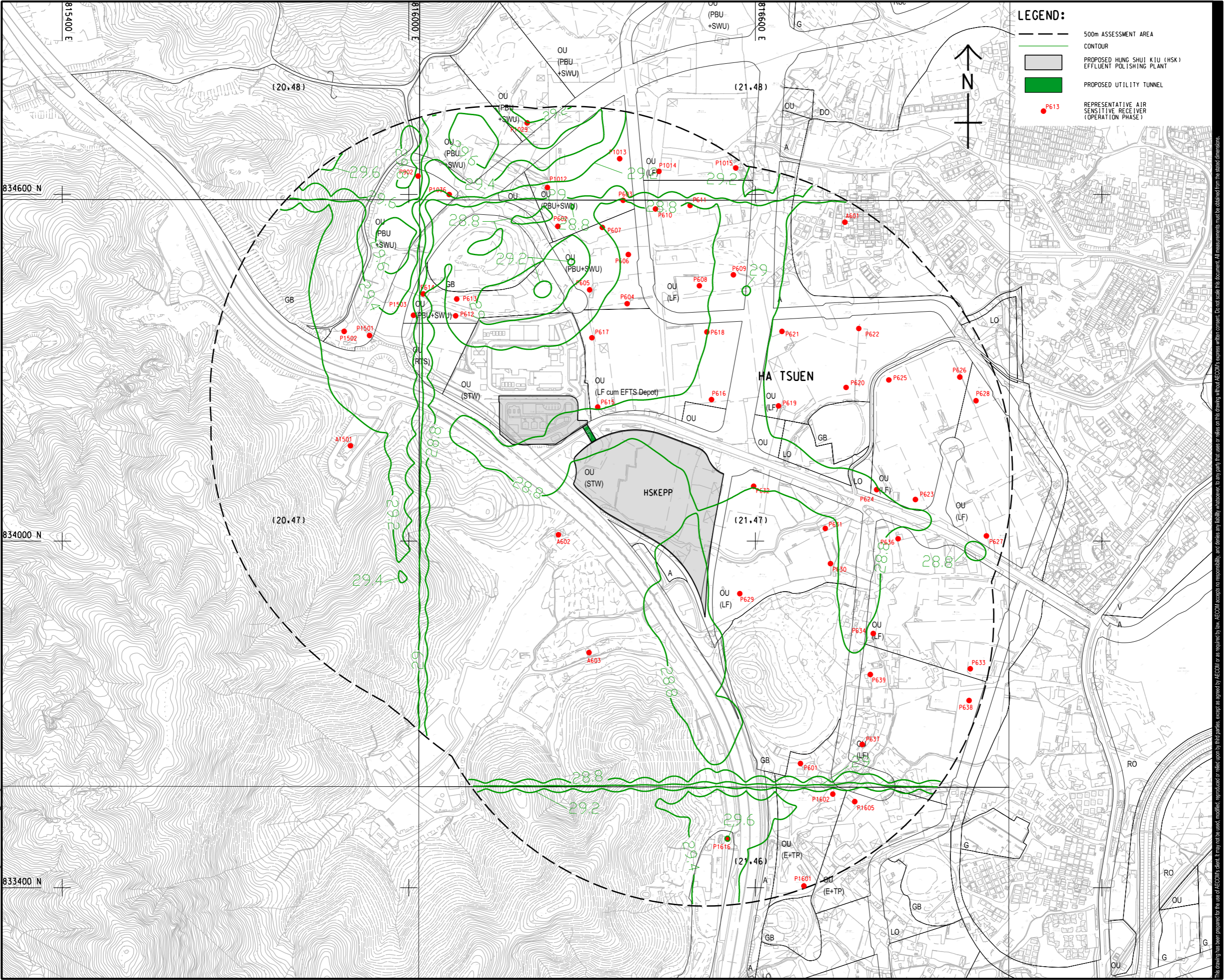


ISO A1 594mm x 841mm  
 Approved:  
 Checked:  
 Designer:  
 Project Management Initials:  
 2022/12/26  
 PATH PROJECTS/60631936/Drawing/REPORT/HSK\_709.dgn  
 Plot File by: YauFB



**LEGEND:**

- 500m ASSESSMENT AREA
- CONTOUR
- PROPOSED HUNG SHUI KIU (HSK) EFFLUENT POLISHING PLANT
- PROPOSED UTILITY TUNNEL
- P613 REPRESENTATIVE AIR SENSITIVE RECEIVER (OPERATION PHASE)

**AECOM**

**PROJECT**  
 HUNG SHUI KIU EFFLUENT POLISHING PLANT AND YUEN LONG SOUTH EFFLUENT POLISHING PLANT - INVESTIGATION

**CLIENT**  
 渠務署  
 Drainage Services Department

**CONSULTANT**  
 AECOM Asia Company Ltd.  
 www.aecom.com

**SUB-CONSULTANTS**

**ISSUE/REVISION**

IR	DATE	DESCRIPTION	CHK.

**STATUS**

**SCALE**  
 A1 1 : 3000

**DIMENSION UNIT**  
 METRES

**KEY PLAN**

**PROJECT NO.**  
 60631936

**CONTRACT NO.**  
 CE 6/2019 (DS)

**SHEET TITLE**  
 CONTOUR OF PREDICTED CUMULATIVE ANNUAL RSP CONCENTRATION AT 1.5 mAG (µg/m3) (OPERATION PHASE)

**SHEET NUMBER**  
 60631936/HSK/FIGURE 3.9

This drawing has been prepared for the use of AECOM's client. It may not be used, modified, reproduced or relied upon by third parties, except as agreed by AECOM or as required by law. AECOM accepts no responsibility, and disclaims any liability whatsoever, for any part, that, less or in excess of this drawing, without AECOM's express written consent. All measurements must be obtained from the stated dimensions.