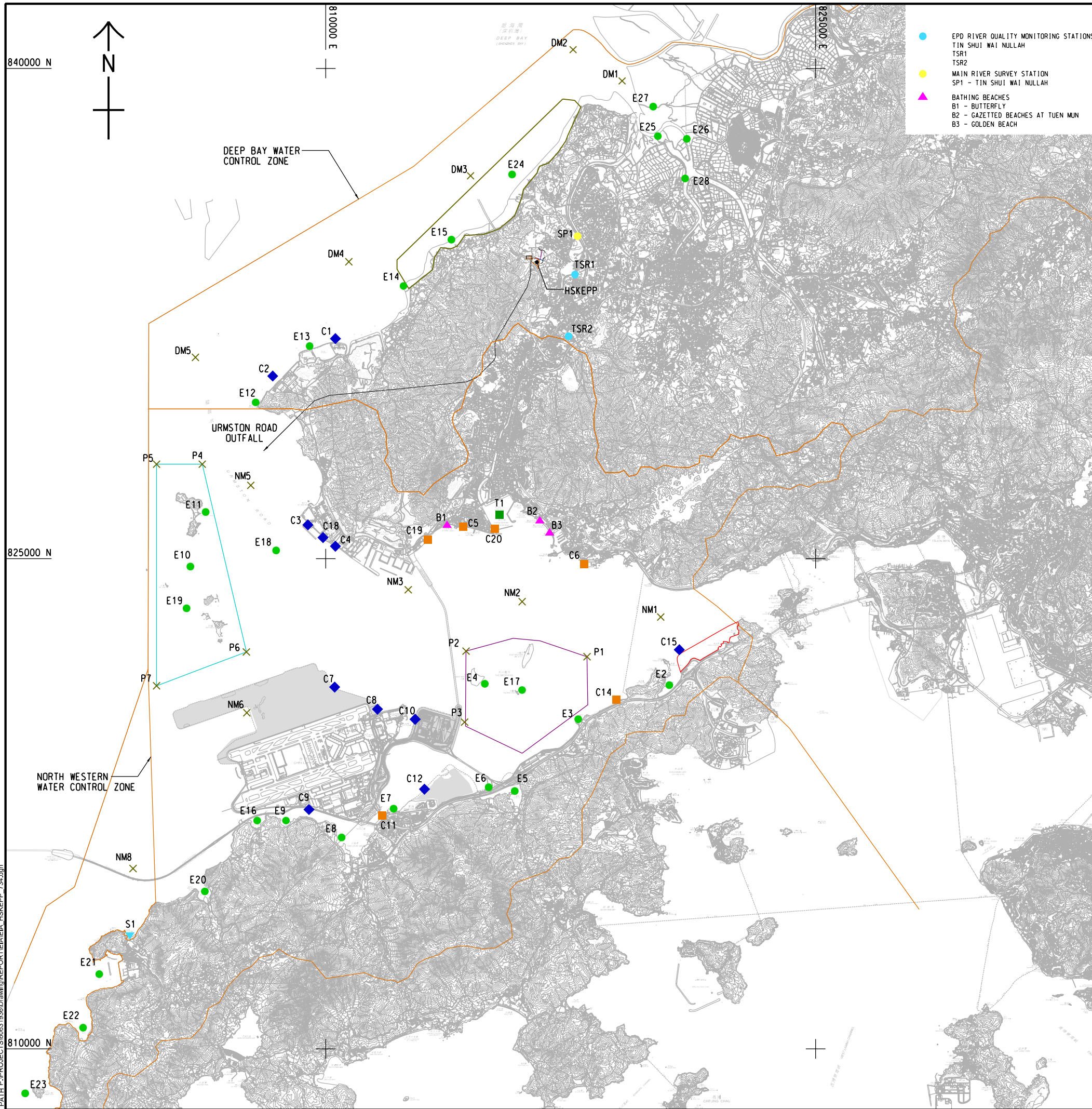


ISO A1 594mm x 841mm
Approved:
Checked:
Designer:
Project Management Initials:
Plot File by: haiquan.zhao 2022/11/29
PATH: P:\PROJECTS\60631936\Drawing\REPORT\EIA\IA\HSKEPP_734.dgn



- EPD RIVER QUALITY MONITORING STATIONS
TIN SHUI WAI NULLAH
TSR1
TSR2
- MAIN RIVER SURVEY STATION
SP1 - TIN SHUI WAI NULLAH
- ▲ BATHING BEACHES
B1 - BUTTERFLY
B2 - GAZETTED BEACHES AT TUEN MUN
B3 - GOLDEN BEACH

LEGEND:

- PROJECT BOUNDARY
- PROPOSED RISING MAIN (BY OTHERS)
- PROPOSED EMERGENCY BYPASS PIPE TO TIN SHUI WAI NULLAH (BY OTHERS)
- NORTH WEST NEW TERRITORIES (NWNT) EFFLUENT TUNNEL
- PROPOSED HUNG SHUI KIU (HSK) EFFLUENT POLISHING PLANT
- PROPOSED UTILITY TUNNEL
- DEVELOPMENT UNDER PLANNING OR UNDER CONSTRUCTION
- SHA CHAU AND LUNG KWU CHAU MARINE PARK
- THE BROTHERS MARINE PARK
- POTENTIAL RECLAMATION SITE
- BOUNDARY OF WATER CONTROL ZONES
- AREA OF OYSTER PRODUCTION
- SAN WAI SEWAGE TREATMENT WORKS
- ◆ URMSTON ROAD OUTFALL
- ◆ COOLING WATER / SEAWATER INTAKES
- ◆ C1 - FUTURE SLUDGE TREATMENT FACILITIES
- ◆ C2 - CLP BLACK POINT POWER STATION
- ◆ C3 - CASTLE PEAK POWER STATION
- ◆ C4 - SHIU WING STEEL MILLS
- ◆ C7 - FUTURE AIRPORT (EAST)
- ◆ C8 - AIRPORT (NORTH)
- ◆ C9 - AIRPORT (SOUTH)
- ◆ C10 - FUTURE HKBCF
- ◆ C12 - FUTURE TUNG CHUNG EAST
- ◆ C15 - FUTURE SUNNY BAY DEVELOPMENT
- ◆ C18 - CHINA CEMENT PLANT
- FLUSHING WATER INTAKES
- C5 - TUEN MUN (WSD)
- C6 - LOK ON PAI (WSD)
- C11 - TUNG CHUNG
- C14 - SUNNY BAY (WSD)
- C19 - NEAR BUTTERFLY BEACH
- C20 - NEAR LRT TERMINUS
- × OBSERVATION POINTS
- × P1 - THE BROTHERS MARINE PARK
- × P2 - THE BROTHERS MARINE PARK
- × P3 - THE BROTHERS MARINE PARK
- × P4 - SHA CHAU AND LUNG KWU CHAU MARINE PARK
- × P5 - SHA CHAU AND LUNG KWU CHAU MARINE PARK
- × P6 - SHA CHAU AND LUNG KWU CHAU MARINE PARK
- × P7 - SHA CHAU AND LUNG KWU CHAU MARINE PARK
- × DM1 - EPD MONITORING STATION AT INNER DEEP BAY
- × DM2 - EPD MONITORING STATION AT INNER DEEP BAY
- × DM3 - EPD MONITORING STATION AT INNER DEEP BAY
- × DM4 - EPD MONITORING STATION AT OUTER DEEP BAY
- × DM5 - EPD MONITORING STATION AT OUTER DEEP BAY
- × NM1 - EPD MONITORING STATION AT LANTAU ISLAND (NORTH)
- × NM2 - EPD MONITORING STATION AT PEARL ISLAND
- × NM3 - EPD MONITORING STATION AT PILLAR POINT
- × NM5 - EPD MONITORING STATION AT URMSTON ROAD
- × NM6 - EPD MONITORING STATION AT CHEK LAP KOK (NORTH)
- × NM8 - EPD MONITORING STATION AT CHEK LAP KOK (WEST)
- TYPHOON SHELTER
- T1 - TUEN MUN
- ▼ ESTUARY
- ▼ S1 - TAI O
- ECOLOGICAL/FISHERIES RESOURCES
- E2 - YAM O WAN (MANGROVE, SEAGRASS & HORSESHOE CRAB HABITAT)
- E3 - SHAM SHUI KOK (CORAL HABITAT)
- E4 - THE BROTHERS (CORAL HABITAT)
- E5 - TAI HO WAN AND TAI HO STREAM SSSI (MANGROVE, SEAGRASS & HORSESHOE CRAB HABITAT)
- E6 - TUNG CHUNG EAST (CORAL HABITAT)
- E7 - TUNG CHUNG (CORAL HABITAT)
- E8 - TUNG CHUNG WAN AND SAN TAU BEACH SSSI (MANGROVE, SEAGRASS & HORSESHOE CRAB HABITAT)
- E9 - HAU HOK WAN (HORSESHOE CRAB HABITAT)
- E10 - SHA CHAU AND LUNG KWU CHAU MARINE PARK / LUNG KWU CHAU, TREE ISLAND AND SHA CHAU SSSI A
- E11 - SHA CHAU AND LUNG KWU CHAU MARINE PARK / LUNG KWU CHAU, TREE ISLAND AND SHA CHAU SSSI B
- E12 - LUNG KWU SHEUNG TAN (CORAL HABITAT)
- E13 - TSANG TSUI (CORAL & HORSESHOE CRAB HABITAT)
- E14 - AP TSAI HANG (MANGROVE, SEAGRASS & HORSESHOE CRAB HABITAT)
- E15 - PAK NAI SSSI AND SHEUNG PAK NAI (MANGROVE, SEAGRASS & HORSESHOE CRAB HABITAT)
- E16 - SHA LO WAN (HORSESHOE CRAB HABITAT)
- E17 - THE BROTHERS MARINE PARK
- E18 - FISHING/SPAWNING GROUNDS IN NORTH LANTAU
- E19 - ARTIFICIAL REEFS NEAR SHA CHAU
- E20 - SHAM WAT WAN (MANGROVE & HORSESHOE CRAB HABITAT)
- E21 - TAI O (HIGH PRODUCTION OF CAPTURE FISHERIES & MANGROVE HABITAT)
- E22 - YI O (MANGROVE & HORSESHOE CRAB HABITAT)
- E23 - POTENTIAL MARINE PARK / MARINE RESERVE FOR SOUTHWEST LANTAU
- E24 - OYSTER CULTURE AREA
- E25 - MANGROVE (INNER DEEP BAY)
- E26 - MAI PO MARSHES SSSI
- E27 - MAI PO INNER DEEP BAY RAMSAR SITE / NER DEEP BAY SSSI
- E28 - MANGROVE (ALONG SHAN PUI RIVER)

AECOM

PROJECT
HUNG SHUI KIU EFFLUENT POLISHING PLANT AND YUEN LONG SOUTH EFFLUENT POLISHING PLANT - INVESTIGATION

CLIENT
渠務署
Drainage Services Department

CONSULTANT
AECOM Asia Company Ltd.
www.aecom.com

SUB-CONSULTANTS

ISSUE/REVISION

NO.	DATE	DESCRIPTION	CHK.

STATUS

SCALE **DIMENSION UNIT**
A1 1:60000 METRES

KEY PLAN

PROJECT NO. **CONTRACT NO.**
60631936 CE 6/2019 (DS)

SHEET TITLE
INDICATIVE LOCATIONS OF MARINE WATER SENSITIVE RECEIVERS AND OBSERVATION POINTS (NORTH WESTERN WATERS)

SHEET NUMBER
60631936/EIA/HSKEPP/FIGURE 5.1

This drawing has been prepared for the use of AECOM's client. It may not be used, modified, reproduced or relied upon by third parties, except as agreed by AECOM or as required by law. AECOM accepts no responsibility, and disclaims any liability whatsoever, for any gain, loss or damage on this drawing without AECOM's express written consent. All measurements must be obtained from the stated dimensions.