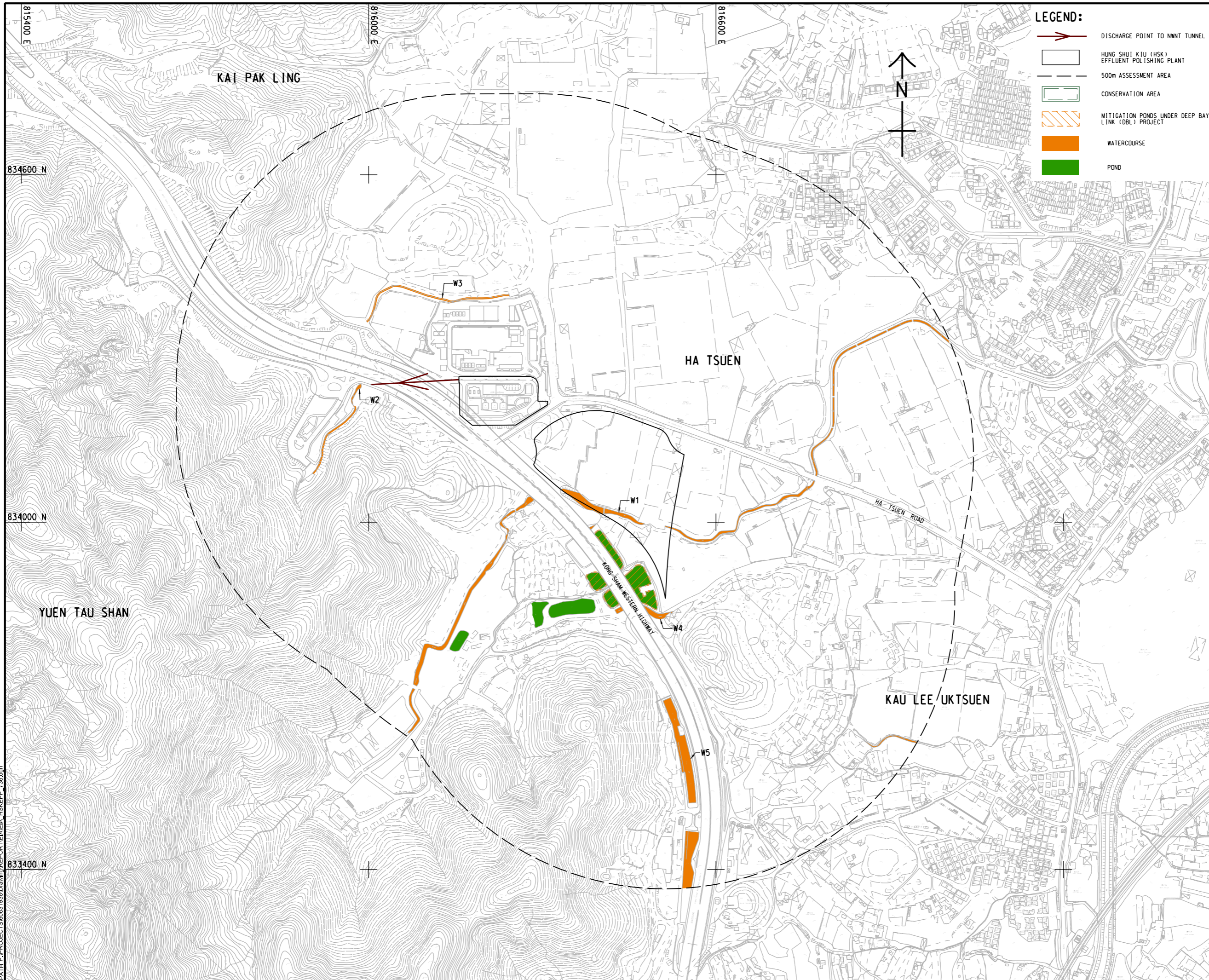


ISO A1 594mm x 841mm
 Approved:
 Checked:
 Designer:
 Project Management Initials:
 Plot File by: vicky.xia1
 PATH: P:\PROJECTS\60631936\Drawing\REPORT\EIA\HSKEPP_736.dgn
 6/5/2022



LEGEND:

- DISCHARGE POINT TO NWT TUNNEL
- HUNG SHUI KIU (HSK) EFFLUENT POLISHING PLANT
- 500m ASSESSMENT AREA
- CONSERVATION AREA
- MITIGATION PONDS UNDER DEEP BAY LINK (DBL) PROJECT
- WATERCOURSE
- POND

AECOM

PROJECT
 HUNG SHUI KIU EFFLUENT POLISHING PLANT AND YUEN LONG SOUTH EFFLUENT POLISHING PLANT - INVESTIGATION

CLIENT
 渠務署
 Drainage Services Department

CONSULTANT
 AECOM Asia Company Ltd.
 www.aecom.com

SUB-CONSULTANTS
 分判工程師公司

ISSUE/REVISION

IR	DATE	DESCRIPTION	CHK.

STATUS
 狀況

SCALE **DIMENSION UNIT**
 A1 1 : 3000 METRES

KEY PLAN
 索引圖

PROJECT NO. **CONTRACT NO.**
 60631936 CE 6/2019 (DS)

SHEET TITLE
 INDICATIVE LOCATIONS OF WSRS IN 500m FROM PROJECT SITE BOUNDARY

SHEET NUMBER
 60631936/EIA/HSKEPP/FIGURE 5.3

This drawing has been prepared for the use of AECOM's client. It may not be used, modified, reproduced or relied upon by third parties, except as agreed by AECOM or as required by law. AECOM accepts no responsibility, and disclaims any liability whatsoever, for any part, that uses or relies on this drawing without AECOM's express written consent. All measurements must be obtained from the stated dimensions.