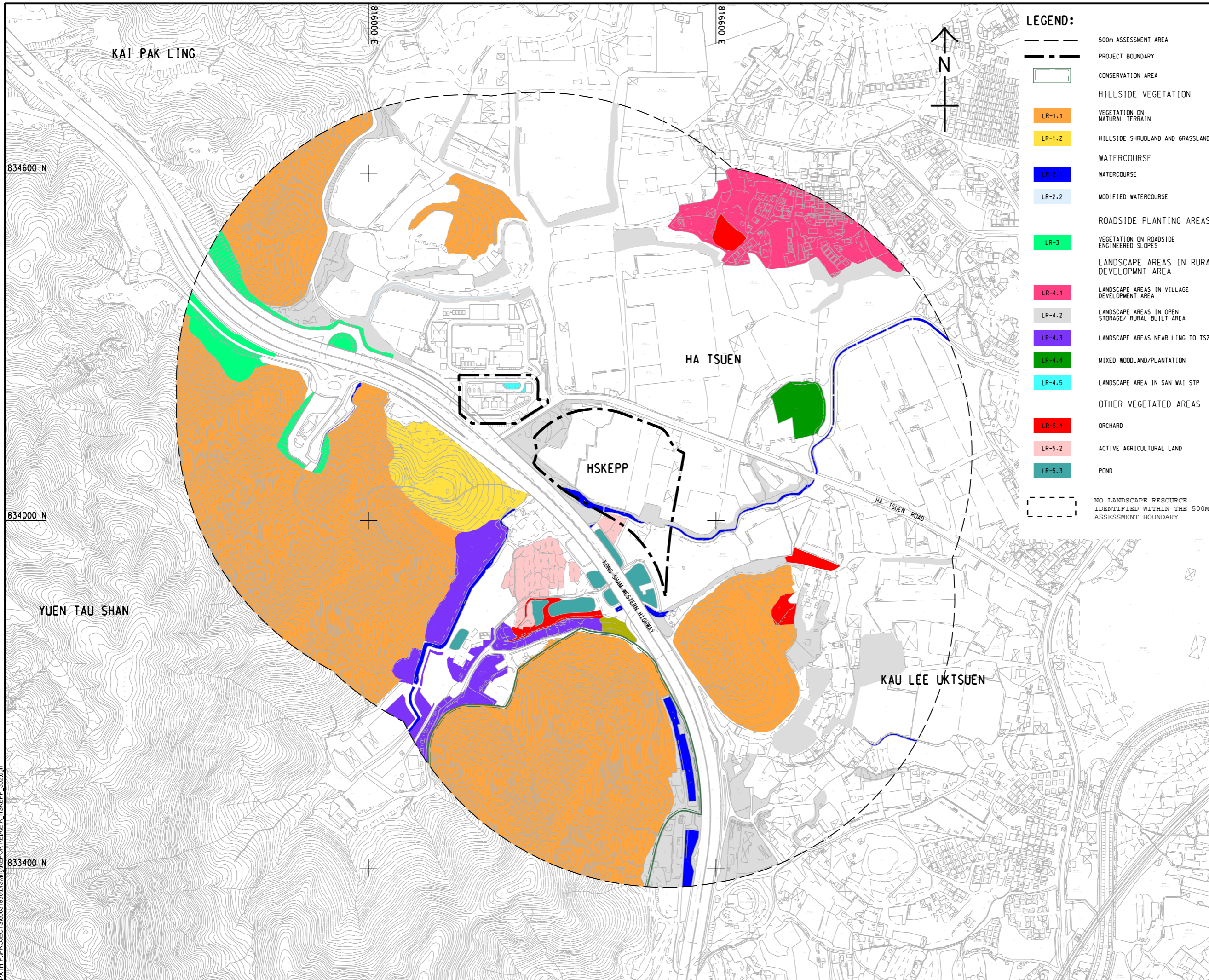


ISO A1 594mm x 841mm
 Approved:
 Checked: 834600 N
 Designer:
 Project Management Initials:
 834000 N
 833400 N
 2022/11/22
 PATH PROJECTS\60631936\Drawing\REPORT\EIA\HSKEPP_302.dgn



LEGEND:

	500m ASSESSMENT AREA
	PROJECT BOUNDARY
	CONSERVATION AREA
	HILLSIDE VEGETATION
	LR-1.1 VEGETATION ON NATURAL TERRAIN
	LR-1.2 HILLSIDE SHRUBLAND AND GRASSLAND
	LR-2.1 WATERCOURSE
	LR-2.2 MODIFIED WATERCOURSE
	LR-3 ROADSIDE PLANTING AREAS
	VEGETATION ON ROADSIDE ENGINEERED SLOPES
	LR-4.1 LANDSCAPE AREAS IN RURAL DEVELOPMENT AREA
	LANDSCAPE AREAS IN VILLAGE DEVELOPMENT AREA
	LR-4.2 LANDSCAPE AREAS IN OPEN STORAGE/ RURAL BUILT AREA
	LR-4.3 LANDSCAPE AREAS NEAR LING TO TSZ
	LR-4.4 MIXED WOODLAND/PLANTATION
	LR-4.5 LANDSCAPE AREA IN SAN WAI STP
	OTHER VEGETATED AREAS
	LR-5.1 ORCHARD
	LR-5.2 ACTIVE AGRICULTURAL LAND
	LR-5.3 POND
	NO LANDSCAPE RESOURCE IDENTIFIED WITHIN THE 500M ASSESSMENT BOUNDARY

AECOM

PROJECT
 HUNG SHUI KIU EFFLUENT POLISHING PLANT AND YUEN LONG SOUTH EFFLUENT POLISHING PLANT - INVESTIGATION

CLIENT
 渠務署
 Drainage Services Department

CONSULTANT
 AECOM Asia Company Ltd.
 www.aecom.com

SUB-CONSULTANTS

ISSUE/REVISION

IR	DATE	DESCRIPTION	CHK.

STATUS

SCALE
A1 1 : 3000

DIMENSION UNIT
METRES

KEY PLAN

PROJECT NO.
60631936

CONTRACT NO.
CE 6/2019 (DS)

SHEET TITLE
LANDSCAPE RESOURCES OVERLAID WITH PROPOSED LAYOUT

SHEET NUMBER
60631936/EIA/HSKEPP/FIGURE 9.3

This drawing has been prepared for the use of AECOM's client. It may not be used, modified, reproduced or relied upon by third parties, except as agreed by AECOM or as required by law. AECOM accepts no responsibility, and disclaims any liability whatsoever, for any gain, loss or damage in this drawing without AECOM's express written consent. Do not scale this document. All measurements must be obtained from the stated dimensions.