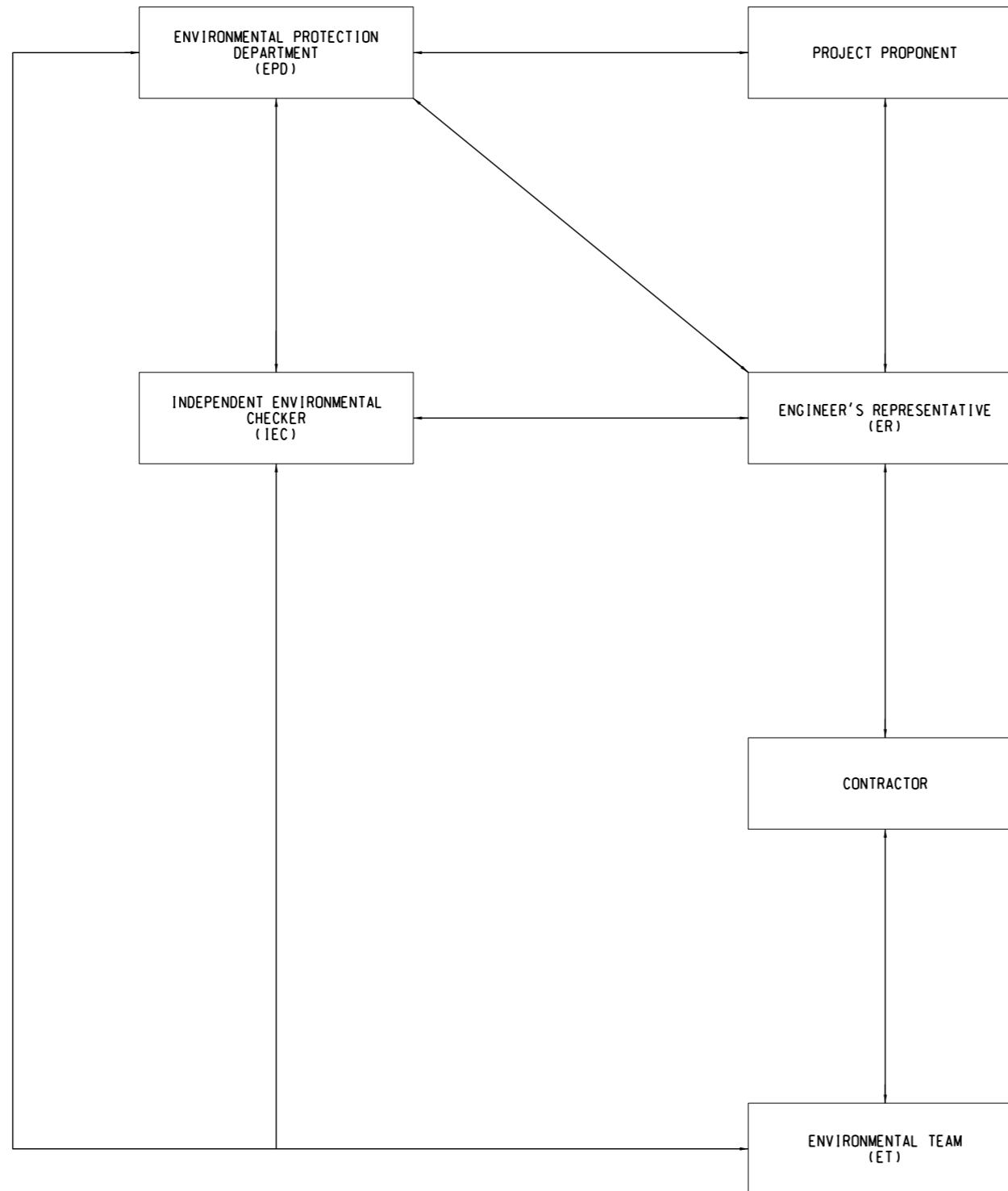


LEGEND:

LINE OF COMMUNICATION



PROJECT

HUNG SHUI KIU  
EFFLUENT POLISHING  
PLANT AND  
YUEN LONG SOUTH  
EFFLUENT POLISHING  
PLANT - INVESTIGATION

CLIENT



CONSULTANT

AECOM Asla Company Ltd.  
www.aecom.com

SUB-CONSULTANTS

ISSUE/REVISION

I/R	DATE	DESCRIPTION	CHK.

STATUS

SCALE DIMENSION UNIT

A1 N/A -

KEY PLAN

PROJECT NO. CONTRACT NO.

60631936 CE 6/2019 (DS)

SHEET TITLE

PROJECT ORGANIZATION CHART

SHEET NUMBER

60631936/EIA/FIGURE 1.2

This drawing has been prepared for the use of AECOM's client. It may not be used, modified, reproduced or relied upon by third parties, except as agreed by AECOM or as required by law. AECOM accepts no responsibility, and denies any liability whatsoever, to any party that uses or relies on this drawing without AECOM's express written consent. Do not scale this document. All measurements must be obtained from the stated dimensions.