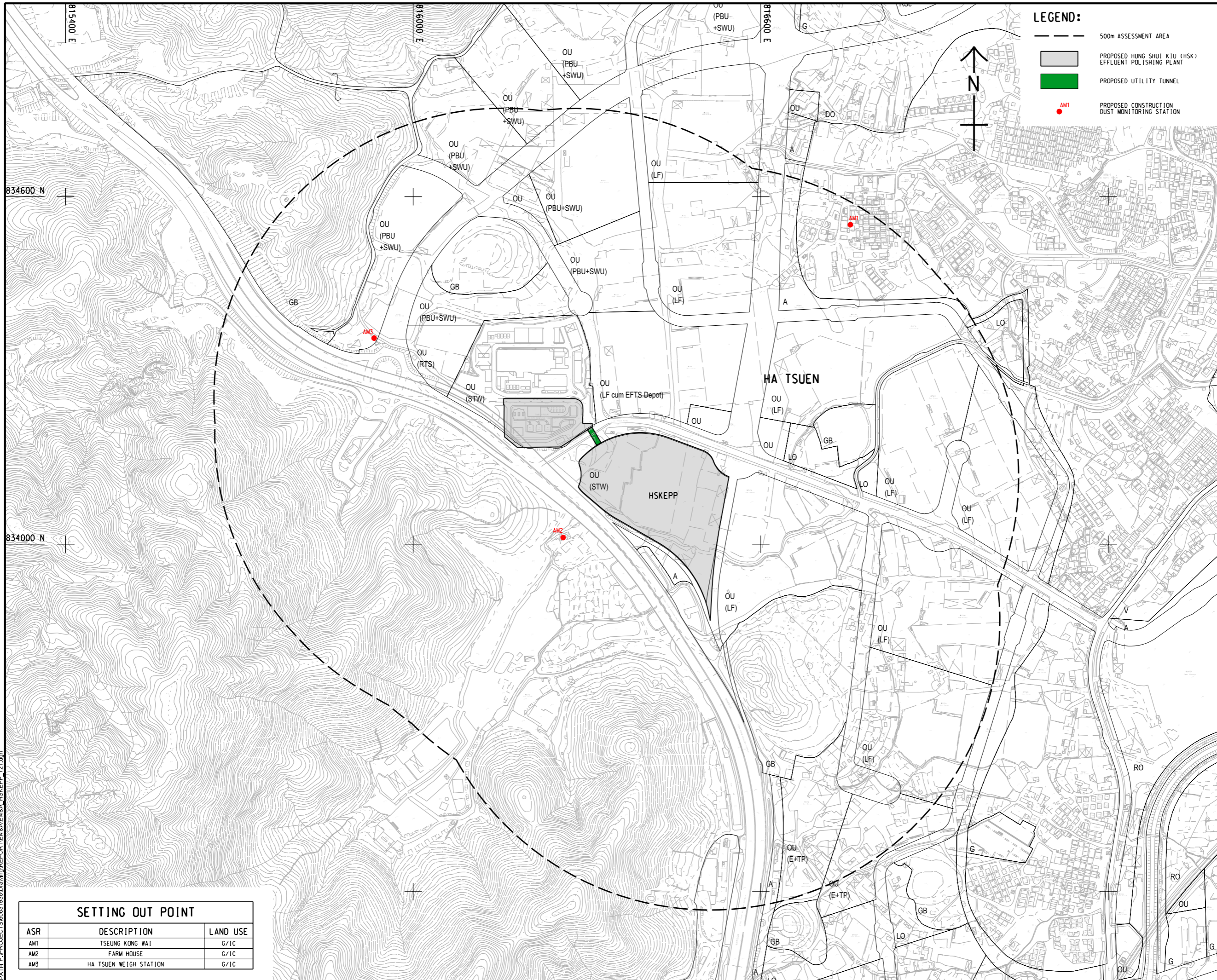


ISO A1 594mm x 841mm
 Approved:
 Checked:
 Designer:
 Project Management Initials:



LEGEND:

- 500m ASSESSMENT AREA
- PROPOSED HUNG SHUI KIU (HSK) EFFLUENT POLISHING PLANT
- PROPOSED UTILITY TUNNEL
- AM1 PROPOSED CONSTRUCTION DUST MONITORING STATION

AECOM

PROJECT
 HUNG SHUI KIU
 EFFLUENT POLISHING
 PLANT AND
 YUEN LONG SOUTH
 EFFLUENT POLISHING
 PLANT - INVESTIGATION

CLIENT
 渠務署
 Drainage Services Department

CONSULTANT
 AECOM Asia Company Ltd.
 www.aecom.com

SUB-CONSULTANTS

ISSUE/REVISION

NO.	DATE	DESCRIPTION	CHK.

STATUS

SCALE **DIMENSION UNIT**
 A1 1 : 3000 METRES

KEY PLAN

PROJECT NO. **CONTRACT NO.**
 60631936 CE 6/2019 (DS)

SHEET TITLE
 LOCATION OF CONSTRUCTION
 DUST MONITORING STATIONS

SHEET NUMBER
 60631936/EM&A/HSKEPP/FIGURE 2.1

This drawing has been prepared for the use of AECOM's client. It may not be used, modified, reproduced or relied upon by third parties, except as agreed by AECOM or as required by law. AECOM accepts no responsibility, and disclaims any liability, whatsoever, for any part, that less or relies on this drawing without AECOM's express written consent. All measurements must be obtained from the stated dimensions.

SETTING OUT POINT

ASR	DESCRIPTION	LAND USE
AM1	TSEUNG KONG WAI	G/1C
AM2	FARM HOUSE	G/1C
AM3	HA TSUEN WEIGH STATION	G/1C

Plot File by: ZHUJCC 2022/11/22
 PATH: P:\PROJECTS\60631936\Drawing\REPORT\EM&A_HSKEPP_721.dgn