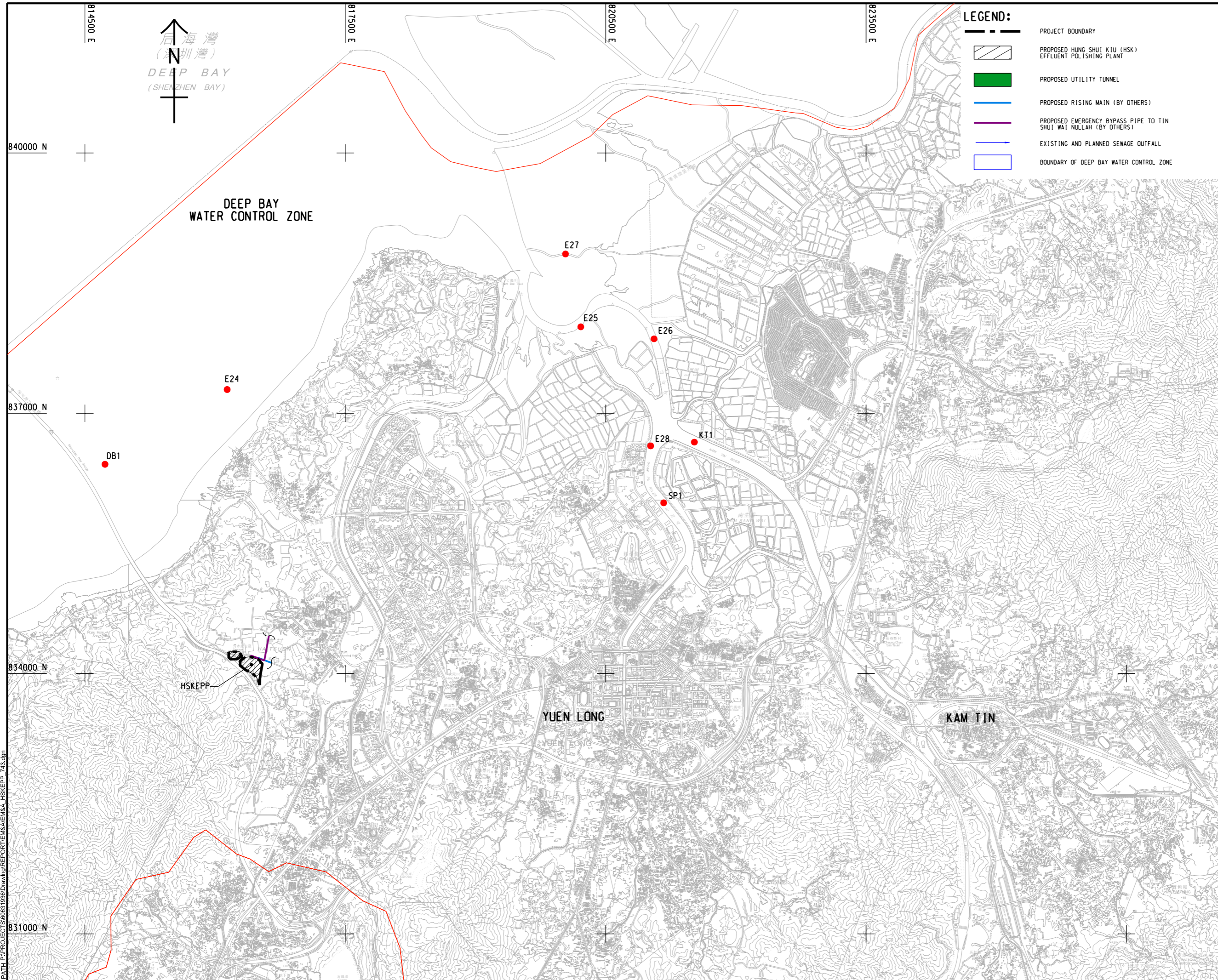









ISO A1 594mm x 841mm
 Approved:
 Checked:
 Designer:
 Project Management Initials:



LEGEND:

-  PROJECT BOUNDARY
-  PROPOSED HUNG SHUI KIU (HSK) EFFLUENT POLISHING PLANT
-  PROPOSED UTILITY TUNNEL
-  PROPOSED RISING MAIN (BY OTHERS)
-  PROPOSED EMERGENCY BYPASS PIPE TO TIN SHUI WAI NULLAH (BY OTHERS)
-  EXISTING AND PLANNED SEWAGE OUTFALL
-  BOUNDARY OF DEEP BAY WATER CONTROL ZONE



PROJECT
 HUNG SHUI KIU EFFLUENT POLISHING PLANT AND YUEN LONG SOUTH EFFLUENT POLISHING PLANT - INVESTIGATION

CLIENT
 渠務署
 Drainage Services Department

CONSULTANT
 AECOM Asia Company Ltd.
 www.aecom.com

SUB-CONSULTANTS

ISSUE/REVISION

I/R	DATE	DESCRIPTION	CHK.

STATUS

SCALE
 A1 1 : 20000

DIMENSION UNIT
 METRES

KEY PLAN

PROJECT NO.
 60631936

CONTRACT NO.
 CE 6/2019 (DS)

SHEET TITLE
 LOCATIONS OF WATER QUALITY MONITORING STATIONS FOR OPERATION PHASE (TIN SHUI WAI NULLAH DISCHARGE)

SHEET NUMBER
 60631936/EM&A/HSKEPP/FIGURE 4.3

Plot File by: YaoFB 2022/07/18
 PATH: P:\PROJECTS\60631936\Drawing\REPORT\EM&A_HSKEPP_743.dgn

This drawing has been prepared for the use of AECOM's client. It may not be used, modified, reproduced or relied upon by third parties, except as agreed by AECOM or as required by law. AECOM accepts no responsibility, and disclaims any liability whatsoever, for any part, in whole or in part, of this drawing without AECOM's express written consent. All measurements must be obtained from the stated dimensions.