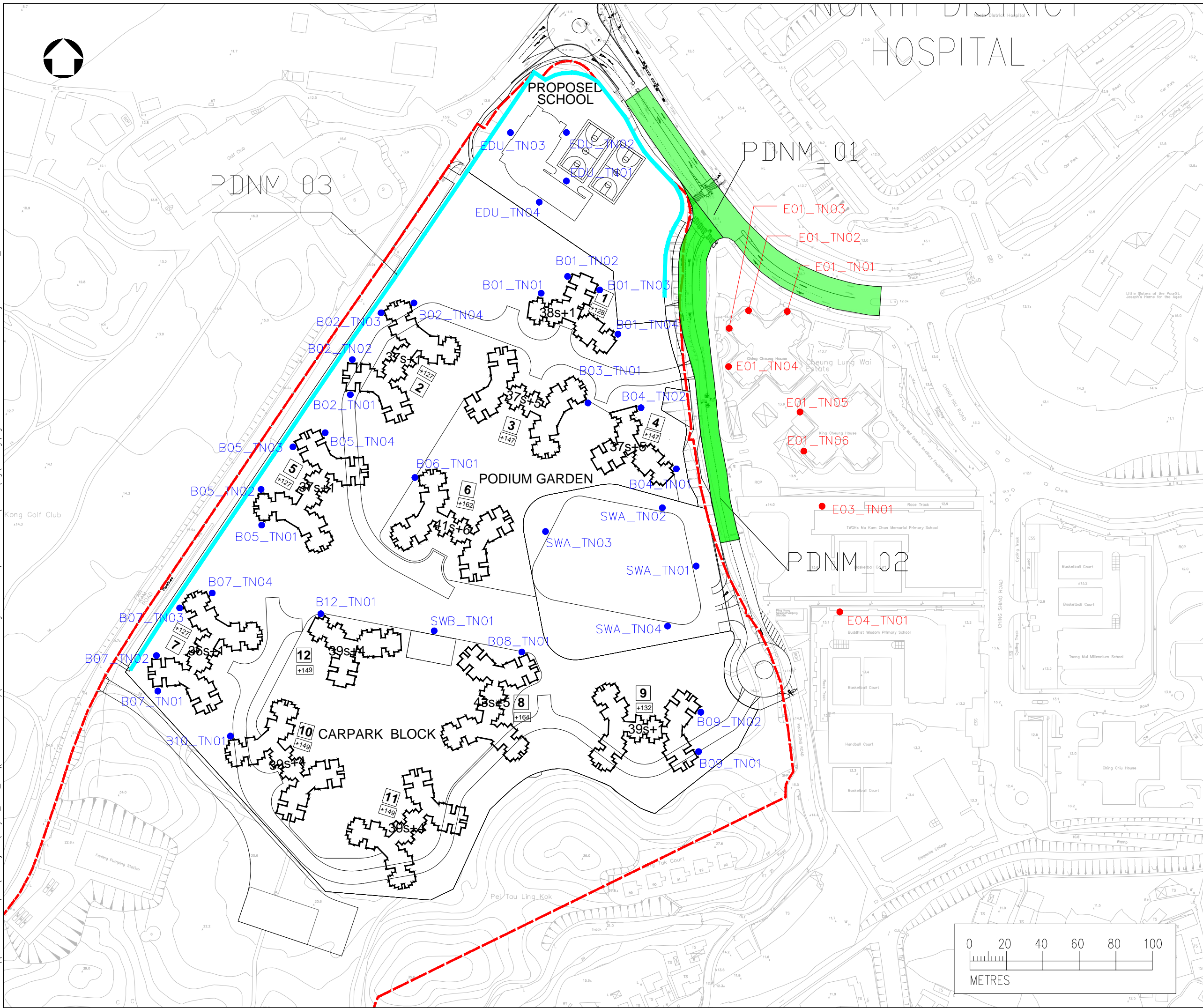
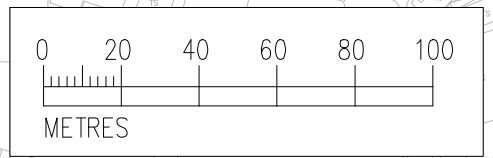


Date : 23/12/2021  
 Filename : \\hkwn2000at16\_SDE\7 - Projects\Project\_H321\_Env\2535551-2535600\2535551A - Fanning Golf Course\5. Deliverables\5. EIA\Fig\working\Fig 4.6.3 - Location Of Direct Mitigation Measure\_202112



- NOTES :
1. ALL DIMENSIONS ARE IN MILLIMETRES UNLESS OTHERWISE STATED.
  2. ALL LEVELS ARE IN METRES (M) AND RELATIVE TO HONG KONG PRINCIPAL DATUM (mPD).
- LEGEND :
- PROJECT BOUNDARY
  - LOW NOISE ROAD SURFACING
  - 7m HIGH VERTICAL BARRIER
  - EXISTING NOISE ASSESSMENT POINT
  - PLANNED NOISE ASSESSMENT POINT

Rev	Description	By	Date
Consultant			
Project title			
AGREEMENT NO. CE17/2019 (CE) TECHNICAL STUDY ON PARTIAL DEVELOPMENT OF FANLING GOLF COURSE SITE - FEASIBILITY STUDY			
Drawing title			
LOCATIONS OF CONSIDERED DIRECT MITIGATION MEASURES			
Drawing no.		Rev.	
AL		4	
Drawn	Date	Checked	Approved
AL	12/2021	CCK	DL
Scale	AS SHOWN	Status	-



© COPYRIGHT RESERVED

土木工程拓展署  
 CIVIL ENGINEERING AND DEVELOPMENT DEPARTMENT  
 NORTH DEVELOPMENT OFFICE