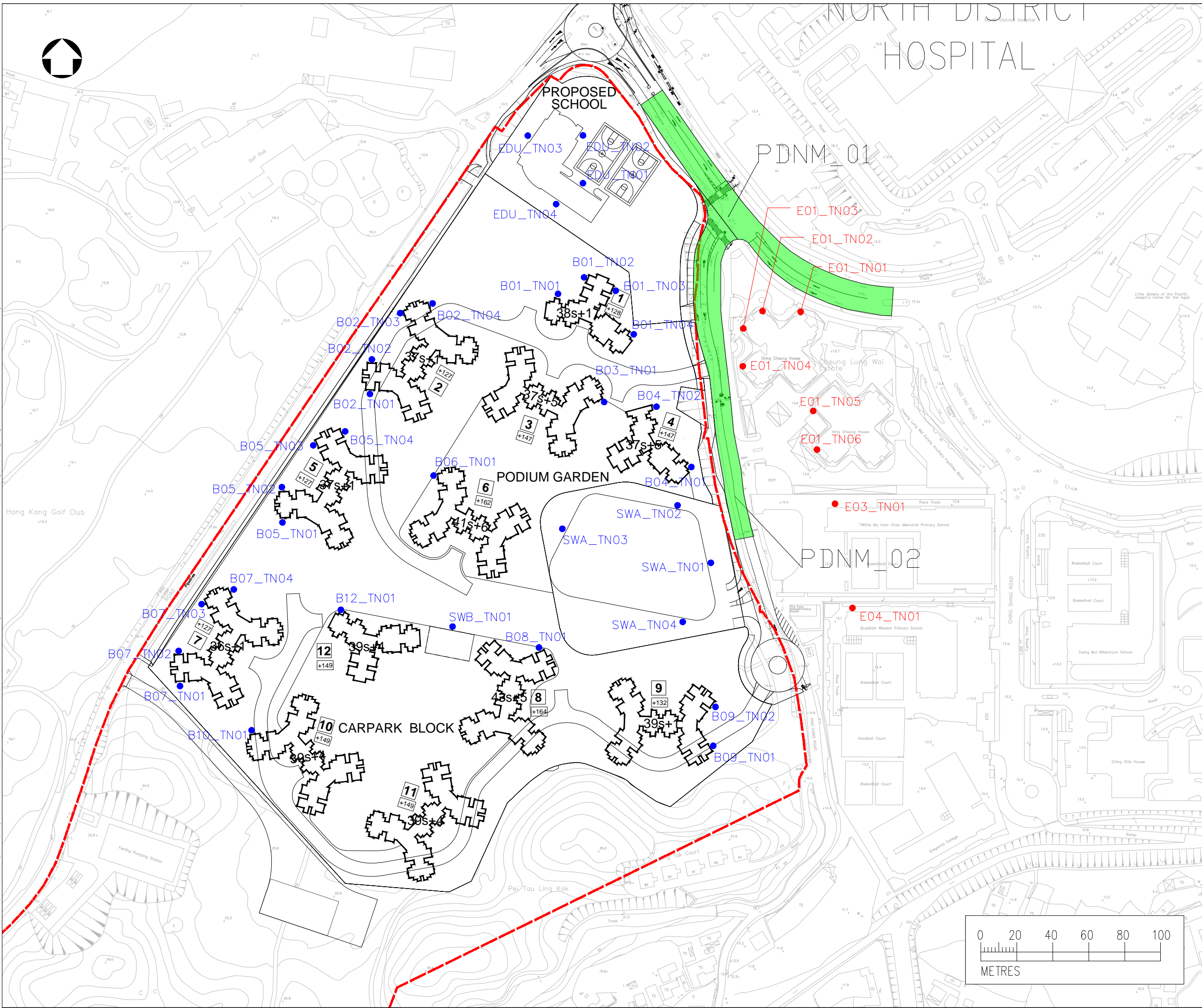


Date : 23/12/2021
 Filename : \\hkwn2000at16\SDE\7 - Projects\Project_H321_Env\2535551 - Fanning Golf Course\5 - Deliverables\5 - EIA\Fig\working\Fig 4.6.3 - Location Of Direct Mitigation Measure_202112



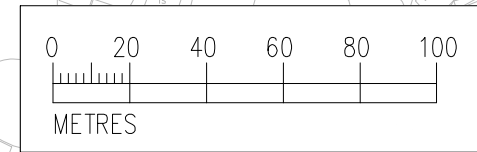
NOTES :

1. ALL DIMENSIONS ARE IN MILLIMETRES UNLESS OTHERWISE STATED.
2. ALL LEVELS ARE IN METRES (M) AND RELATIVE TO HONG KONG PRINCIPAL DATUM (mPD).

LEGEND :

- - - PROJECT BOUNDARY
- LOW NOISE ROAD SURFACING
- EXISTING NOISE ASSESSMENT POINT
- PLANNED NOISE ASSESSMENT POINT

Rev	Description	By	Date
Consultant			
Project title			
AGREEMENT NO. CE17/2019 (CE) TECHNICAL STUDY ON PARTIAL DEVELOPMENT OF FANLING GOLF COURSE SITE - FEASIBILITY STUDY			
Drawing title			
LOCATIONS OF ADOPTED DIRECT MITIGATION MEASURES			
Drawing no.		Rev.	
FIGURE 4.6.3b		4	
Drawn	Date	Checked	Approved
AL	12/2021	CCK	DL
Scale	Status		
AS SHOWN			



© COPYRIGHT RESERVED

土木工程拓展署
CIVIL ENGINEERING AND DEVELOPMENT DEPARTMENT
 NORTH DEVELOPMENT OFFICE