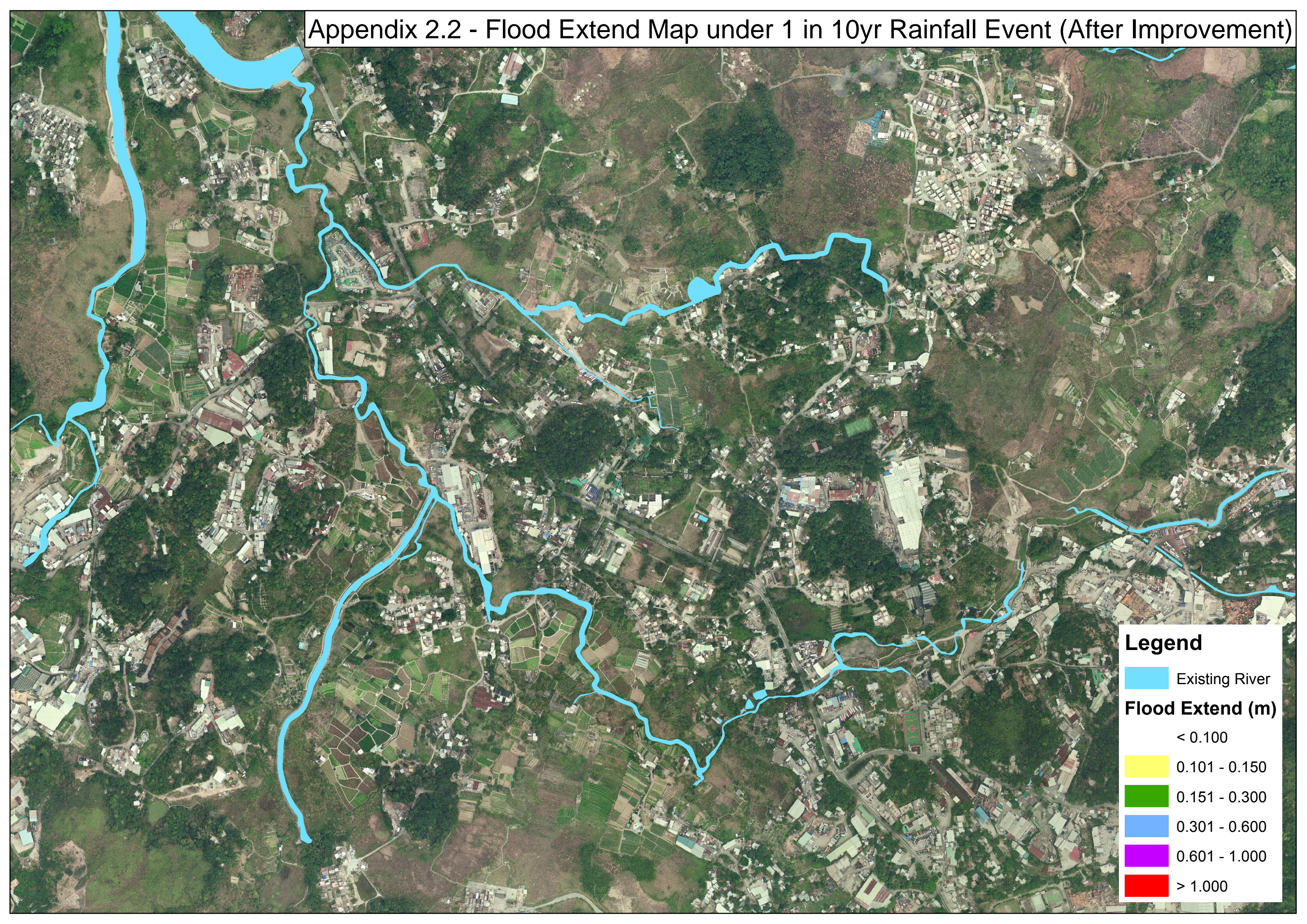


Appendix 2.2 - Flood Extend Map under 1 in 10yr Rainfall Event (After Improvement)



Legend

- Existing River
- Flood Extend (m)**
 - < 0.100
 - 0.101 - 0.150
 - 0.151 - 0.300
 - 0.301 - 0.600
 - 0.601 - 1.000
 - > 1.000