


Year 1982:
The Project Area was an undeveloped land in 1982. The Project Area comprised with farmland, vegetation, road, drainage facilities and village houses.



Year 1982 (Zoom-in map 1):
This section of Project Area was an undeveloped land in 1982. It mainly comprised with farmland and vegetation, also with road, drainage facilities and village houses.

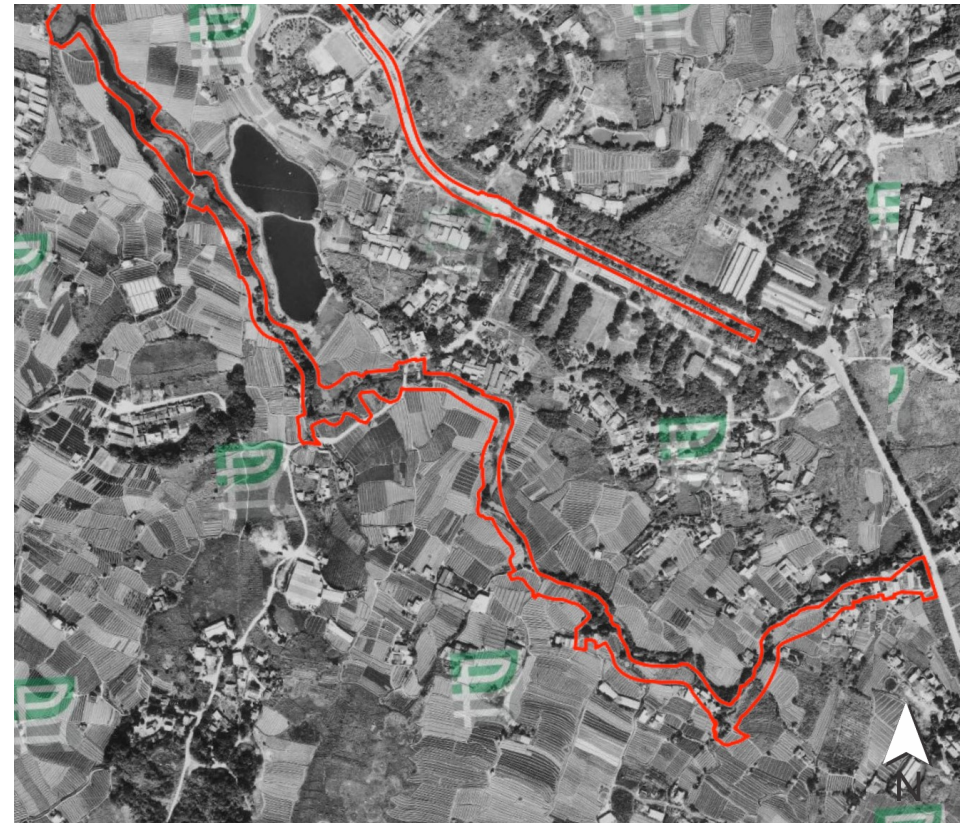
 Approximate location of the Project Area

Source - GEO INFO, Lands Department, HKSARG


PROJECT: Land Contamination Assessment for Drainage Improvement Works in Ta Kwu Ling - Investigation, Design and Construction		TITLE: Appendix 7.1 Referenced Aerial Photographs	
ERM-Hong Kong, Limited 2509, 25/F, One Harbourfront, Tak Fung Street, Hung Hom, Kowloon Tel: (852) 2271 3000 Fax: (852) 3015 8052			
DATE:	CHECKED:	PROJECT: 0482209	
DRAWN:	APPROVED:	SCALE:	
DRAWING:		SIZE: A4	REV: 0
<small>© ERM This print is confidential and is supplied on the understanding that it will be used only as a record to identify or inspect parts, concepts or designs and that it is not disclosed to other persons or to be used for construction purposes without permission.</small>			




Year 1982 (Zoom-in map 2):
 This section of Project Area was an undeveloped land in 1982. Similarly, it mainly comprised with farmland and vegetation, also with drainage facilities and village houses.



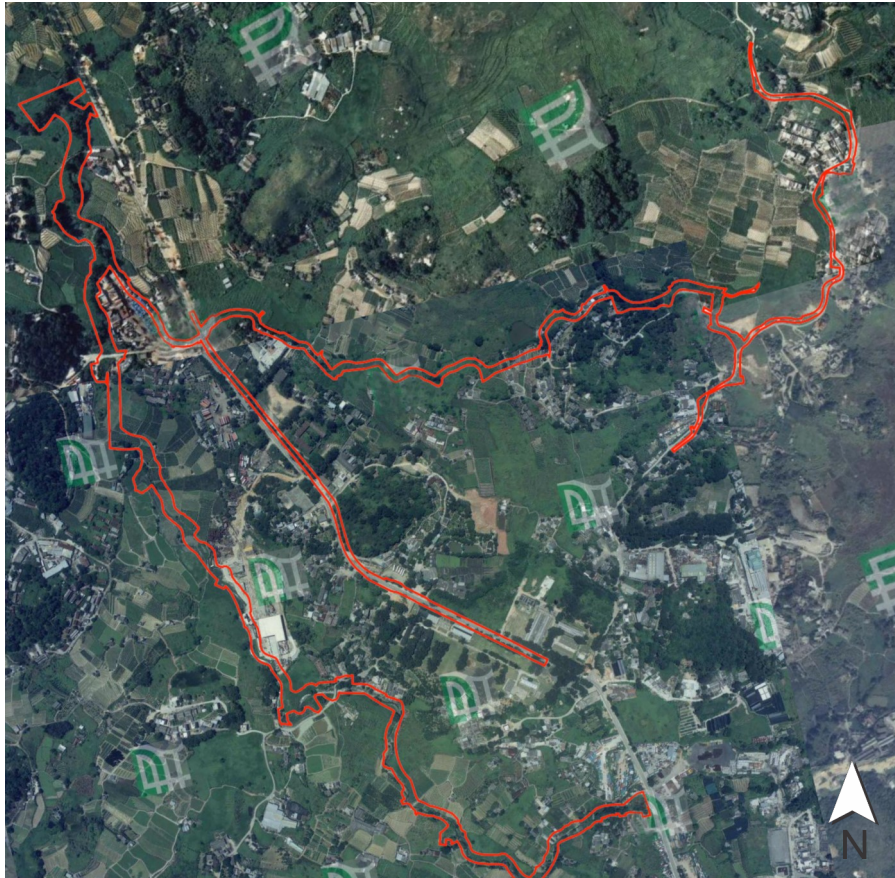
Year 1982 (Zoom-in map 3):
 This section of Project Area was an undeveloped land in 1982. It mainly comprised with farmland and vegetation, also with road, drainage facilities and village houses.

 Approximate location of the Project Area

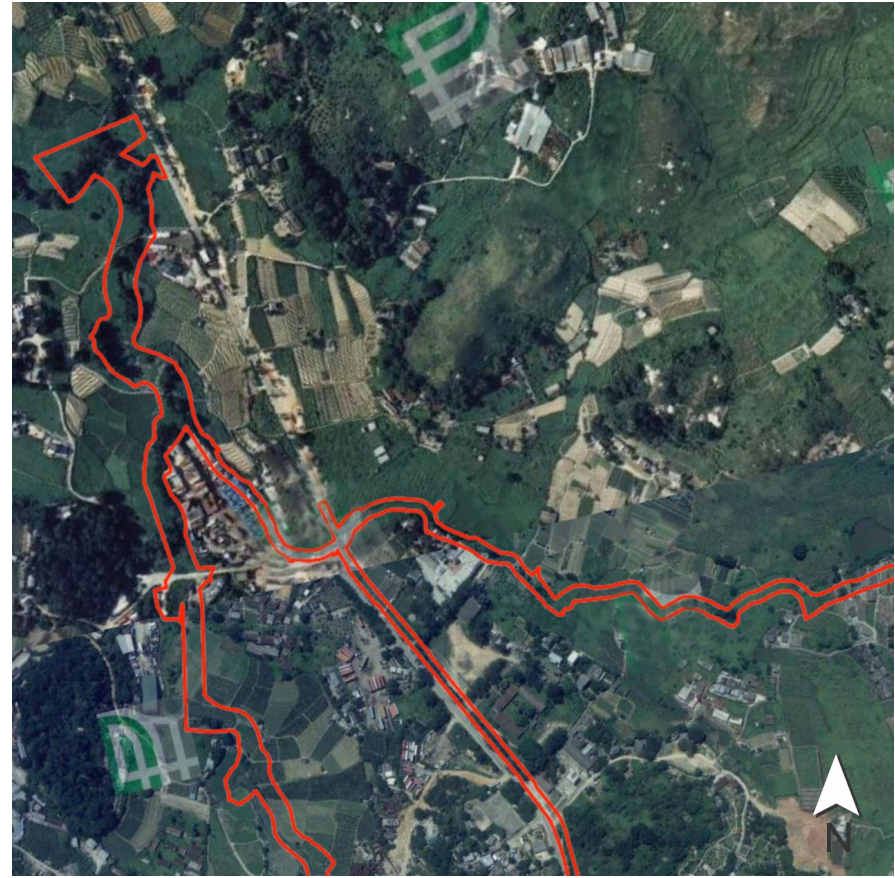
Source - GEO INFO, Lands Department, HKSARG

PROJECT: Land Contamination Assessment for Drainage Improvement Works in Ta Kwu Ling - Investigation, Design and Construction		TITLE: Appendix 7.1 Referenced Aerial Photographs	
ERM-Hong Kong, Limited 2509, 25/F, One Harbourfront, Tak Fung Street, Hung Hom, Kowloon Tel: (852) 2271 3000 Fax: (852) 3015 8052			
DATE:	CHECKED:	PROJECT: 0482209	
DRAWN:	APPROVED:	SCALE:	
DRAWING:		SIZE: A4	REV: 0

© ERM
 This print is confidential and is supplied on the understanding that it will be used only as a record to identify or inspect parts, concepts or designs and that it is not disclosed to other persons or to be used for construction purposes without permission.



Year 1994:
No significant change was observed at the Project Area (except the Concerned Areas).



Year 1994 (Zoom-in map 1):
No significant change was observed at this section of Project Area (except the Concerned Areas). It mainly comprised with farmland and vegetation, also with road, drainage facilities and village houses.

 **Approximate location of the Project Area**

Source - GEO INFO, Lands Department, HKSARG

PROJECT:

Land Contamination Assessment for Drainage Improvement Works in Ta Kwu Ling - Investigation, Design and Construction

ERM-Hong Kong, Limited
2509, 25/F, One Harbourfront,
Tak Fung Street,
Hung Hom, Kowloon
Tel: (852) 2271 3000
Fax: (852) 3015 8052



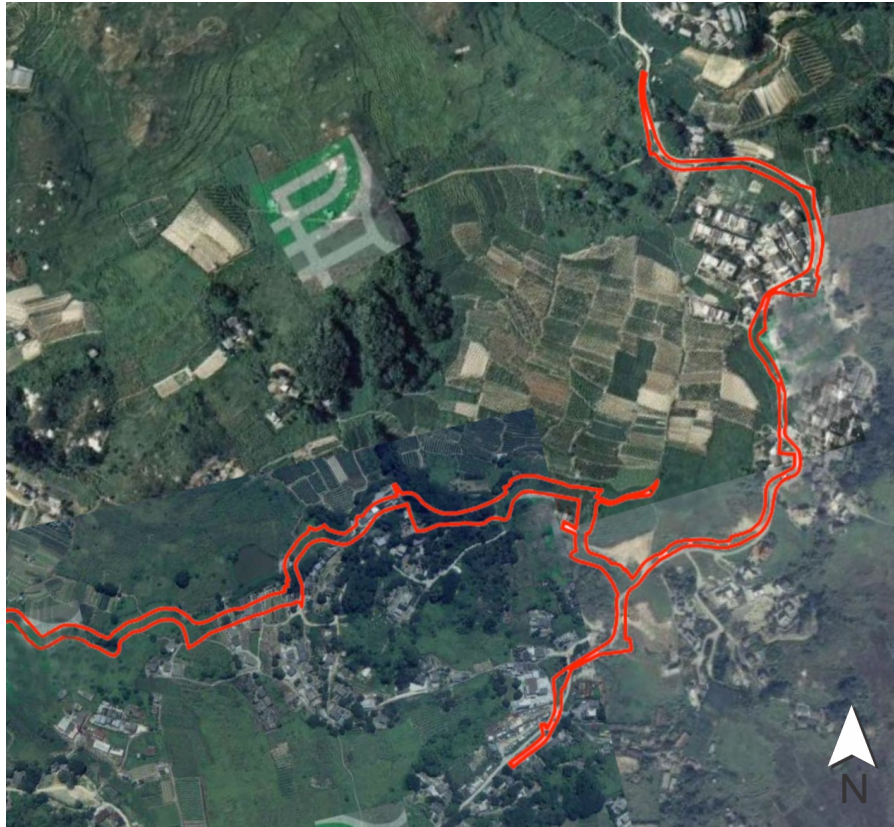
© ERM

This print is confidential and is supplied on the understanding that it will be used only as a record to identify or inspect parts, concepts or designs and that it is not disclosed to other persons or to be used for construction purposes without permission.

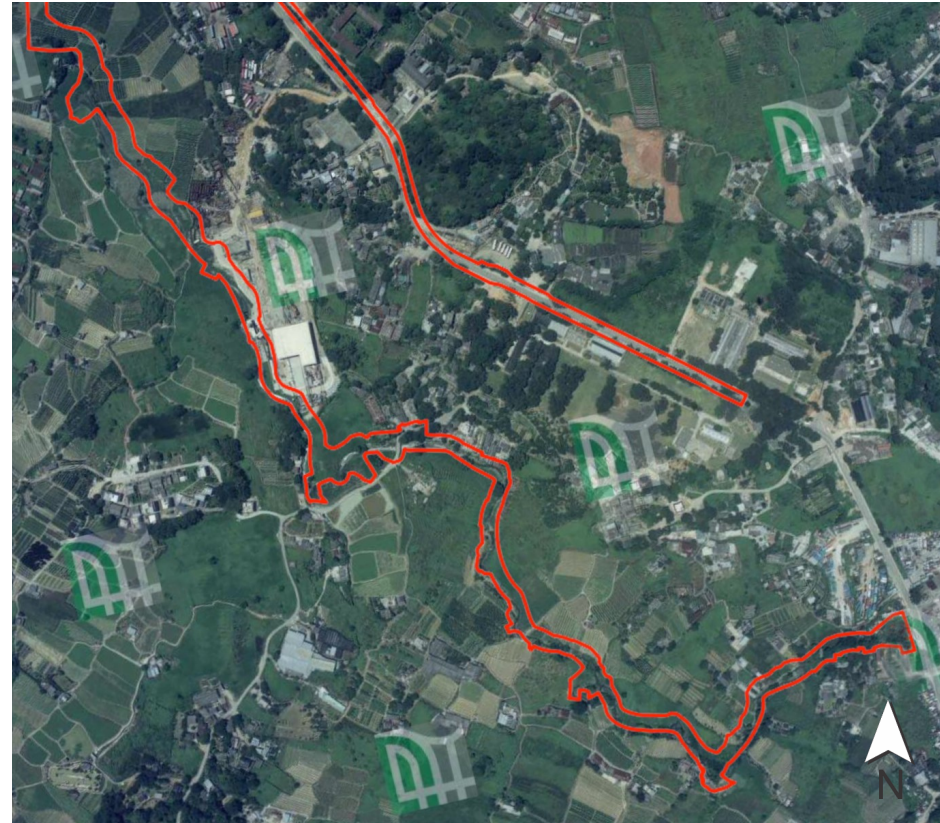
TITLE:

Appendix 7.1
Referenced Aerial Photographs

DATE:	CHECKED:	PROJECT: 0482209	
DRAWN:	APPROVED:	SCALE:	
DRAWING:		SIZE:	REV:
		A4	0



Year 1994 (Zoom-in map 2):
 No significant change was observed at this section of Project Area (except the Concerned Areas). It mainly comprised with farmland and vegetation, also with drainage facilities and village houses.



Year 1994 (Zoom-in map 3):
 No significant change was observed at this section of Project Area (except the Concerned Areas). It mainly comprised with farmland and vegetation, also with road, drainage facilities and village houses.

 **Approximate location of the Project Area**

Source - GEO INFO, Lands Department, HKSARG

PROJECT:

Land Contamination Assessment for Drainage Improvement Works in Ta Kwu Ling - Investigation, Design and Construction

ERM-Hong Kong, Limited
 2509, 25/F, One Harbourfront,
 Tak Fung Street,
 Hung Hom, Kowloon
 Tel: (852) 2271 3000
 Fax: (852) 3015 8052



© ERM

This print is confidential and is supplied on the understanding that it will be used only as a record to identify or inspect parts, concepts or designs and that it is not disclosed to other persons or to be used for construction purposes without permission.

TITLE:

Appendix 7.1
 Referenced Aerial Photographs

DATE:	CHECKED:	PROJECT: 0482209	
DRAWN:	APPROVED:	SCALE:	
DRAWING:		SIZE:	REV:
		A4	0




Year 2004:
No significant change was observed at the Project Area (except the Concerned Areas).



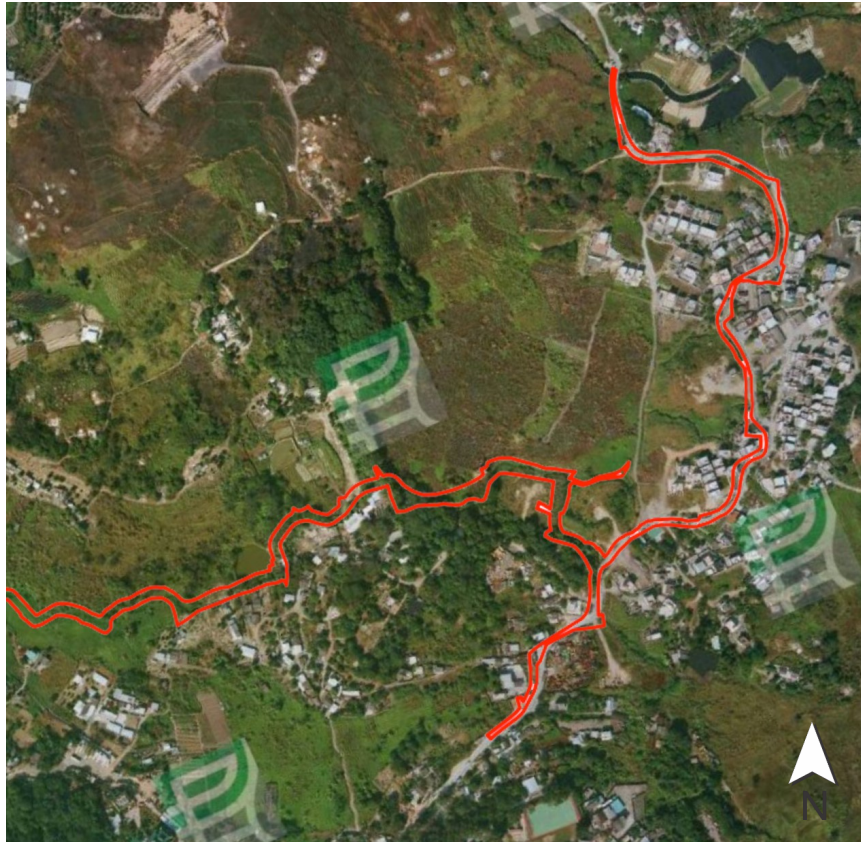
Year 2004 (Zoom-in map 1):
No significant change was observed at this section of Project Area (except the Concerned Areas). Minor site clearance works was carried out for drainage facilities in the northern corner of Project Area.

 Approximate location of the Project Area

Source - GEO INFO, Lands Department, HKSARG

PROJECT: Land Contamination Assessment for Drainage Improvement Works in Ta Kwu Ling - Investigation, Design and Construction		TITLE: Appendix 7.1 Referenced Aerial Photographs	
ERM-Hong Kong, Limited 2509, 25/F, One Harbourfront, Tak Fung Street, Hung Hom, Kowloon Tel: (852) 2271 3000 Fax: (852) 3015 8052			
DATE:	CHECKED:	PROJECT: 0482209	
DRAWN:	APPROVED:	SCALE:	
DRAWING:		SIZE: A4	REV: 0

© ERM
This print is confidential and is supplied on the understanding that it will be used only as a record to identify or inspect parts, concepts or designs and that it is not disclosed to other persons or to be used for construction purposes without permission.




Year 2004 (Zoom-in map 2):
 No significant change was observed at this section of Project Area (except the Concerned Areas). It mainly comprised with farmland and vegetation, also with drainage facilities and village houses.



Year 2004 (Zoom-in map 3):
 No significant change was observed at this section of Project Area (except the Concerned Areas). It mainly comprised with farmland and vegetation, also with road, drainage facilities and village houses.

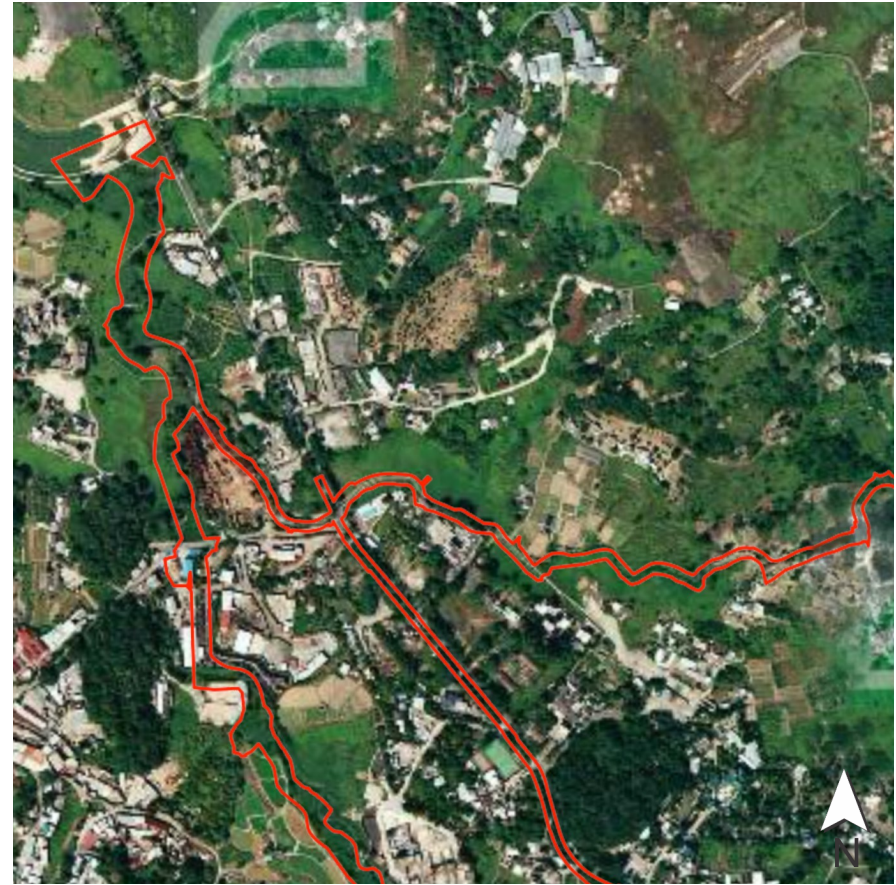
 **Approximate location of the Project Area**

Source - GEO INFO, Lands Department, HKSARG


PROJECT: Land Contamination Assessment for Drainage Improvement Works in Ta Kwu Ling - Investigation, Design and Construction		TITLE: Appendix 7.1 Referenced Aerial Photographs	
ERM-Hong Kong, Limited 2509, 25/F, One Harbourfront, Tak Fung Street, Hung Hom, Kowloon Tel: (852) 2271 3000 Fax: (852) 3015 8052			
DATE:	CHECKED:	PROJECT: 0482209	
DRAWN:	APPROVED:	SCALE:	
DRAWING:		SIZE:	REV:
<small>© ERM This print is confidential and is supplied on the understanding that it will be used only as a record to identify or inspect parts, concepts or designs and that it is not disclosed to other persons or to be used for construction purposes without permission.</small>		A4	0



Year 2008:
No significant change was observed at the Project Area (except the Concerned Areas).



Year 2008 (Zoom-in map 1):
No significant change was observed at this section of Project Area (except the Concerned Areas). It mainly comprised with farmland and vegetation, also with road, drainage facilities and village houses.

 Approximate location of the Project Area

Source - GEO INFO, Lands Department, HKSARG

PROJECT:

Land Contamination Assessment for Drainage Improvement Works in Ta Kwu Ling - Investigation, Design and Construction

ERM-Hong Kong, Limited
2509, 25/F, One Harbourfront,
Tak Fung Street,
Hung Hom, Kowloon
Tel: (852) 2271 3000
Fax: (852) 3015 8052



© ERM

This print is confidential and is supplied on the understanding that it will be used only as a record to identify or inspect parts, concepts or designs and that it is not disclosed to other persons or to be used for construction purposes without permission.

TITLE:

Appendix 7.1
Referenced Aerial Photographs


DATE:	CHECKED:	PROJECT: 0482209	
DRAWN:	APPROVED:	SCALE:	
DRAWING:		SIZE:	REV:
		A4	0



Year 2008 (Zoom-in map 2):
 No significant change was observed at this section of Project Area (except the Concerned Areas). It mainly comprised with vegetation, drainage facilities and village houses.



Year 2008 (Zoom-in map 3):
 No significant change was observed at this section of Project Area (except the Concerned Areas). It mainly comprised with farmland and vegetation, also with road, drainage facilities and village houses.

 Approximate location of the Project Area

Source - GEO INFO, Lands Department, HKSARG

PROJECT:

Land Contamination Assessment for Drainage Improvement Works in Ta Kwu Ling - Investigation, Design and Construction

ERM-Hong Kong, Limited
 2509, 25/F, One Harbourfront,
 Tak Fung Street,
 Hung Hom, Kowloon
 Tel: (852) 2271 3000
 Fax: (852) 3015 8052



© ERM

This print is confidential and is supplied on the understanding that it will be used only as a record to identify or inspect parts, concepts or designs and that it is not disclosed to other persons or to be used for construction purposes without permission.

TITLE:

Appendix 7.1
 Referenced Aerial Photographs

DATE:	CHECKED:	PROJECT: 0482209	
DRAWN:	APPROVED:	SCALE:	
DRAWING:		SIZE:	REV:
		A4	0




Year 2020:
No significant change was observed at the Project Area (except the Concerned Areas).



Year 2020 (Zoom-in map 1):
No significant change was observed at this section of Project Area (except the Concerned Areas). It mainly comprised with farmland and vegetation, also with road, drainage facilities and village houses.

 Approximate location of the Project Area

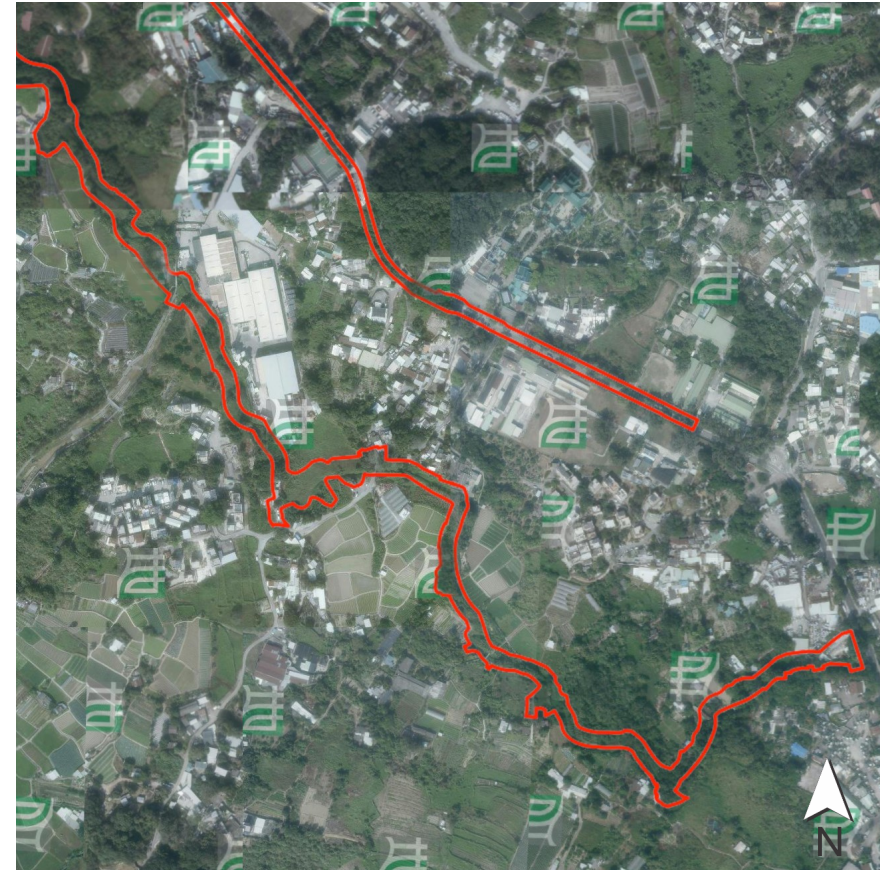
Source - GEO INFO, Lands Department, HKSARG

PROJECT: Land Contamination Assessment for Drainage Improvement Works in Ta Kwu Ling - Investigation, Design and Construction		TITLE: Appendix 7.1 Referenced Aerial Photographs	
ERM-Hong Kong, Limited 2509, 25/F, One Harbourfront, Tak Fung Street, Hung Hom, Kowloon Tel: (852) 2271 3000 Fax: (852) 3015 8052			
DATE:	CHECKED:	PROJECT: 0482209	
DRAWN:	APPROVED:	SCALE:	
DRAWING:		SIZE: A4	REV: 0

© ERM
This print is confidential and is supplied on the understanding that it will be used only as a record to identify or inspect parts, concepts or designs and that it is not disclosed to other persons or to be used for construction purposes without permission.



Year 2020 (Zoom-in map 2):
 No significant change was observed at this section of Project Area (except the Concerned Areas). It mainly comprised with vegetation, drainage facilities and village houses.



Year 2020 (Zoom-in map 3):
 No significant change was observed at this section of Project Area (except the Concerned Areas). It mainly comprised with farmland and vegetation, also with road, drainage facilities and village houses.

 **Approximate location of the Project Area**

Source - GEO INFO, Lands Department, HKSARG

PROJECT:
 Land Contamination Assessment for Drainage Improvement Works in Ta Kwu Ling -
 Investigation, Design and Construction

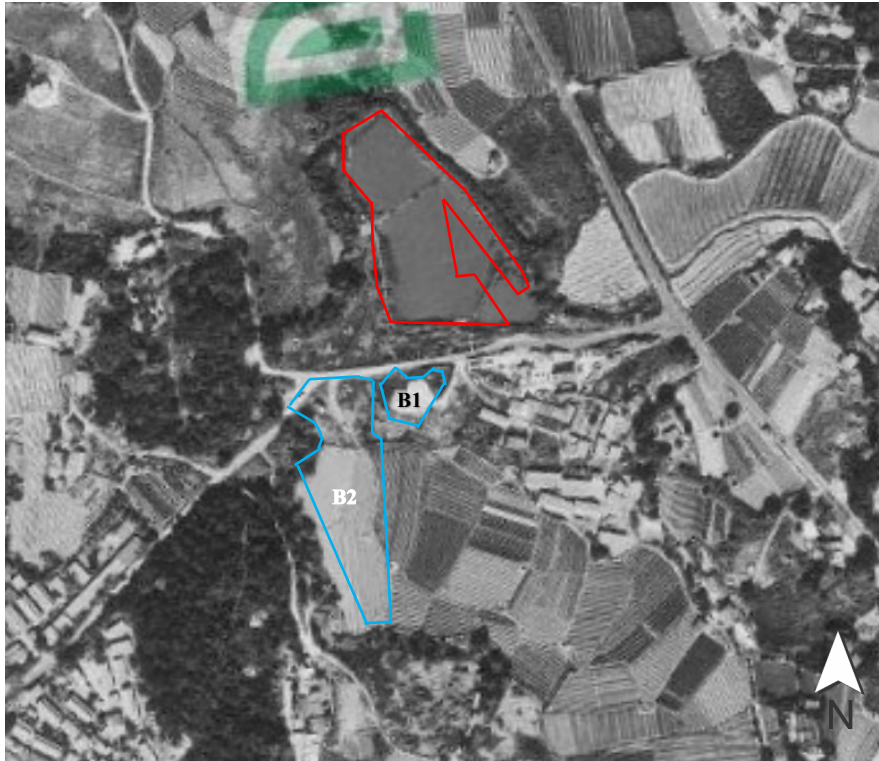
ERM-Hong Kong, Limited
 2509, 25/F, One Harbourfront,
 Tak Fung Street,
 Hung Hom, Kowloon
 Tel: (852) 2271 3000
 Fax: (852) 3015 8052



© ERM
 This print is confidential and is supplied on the understanding that it will be used only
 as a record to identify or inspect parts, concepts or designs and that it is not disclosed
 to other persons or to be used for construction purposes without permission.

TITLE:
 Appendix 7.1
 Referenced Aerial Photographs

DATE:	CHECKED:	PROJECT: 0482209	
DRAWN:	APPROVED:	SCALE:	
DRAWING:		SIZE: A4	REV: 0



Year 1982 (Ref: 46740)
 Concerned Area A, B1, and B3 were undeveloped land in 1982. It mainly comprised with farmland.



Year 1994 (Ref: CN08662)
 Concerned Area A, B1 and B2 were developed as contractor storage yard, open storage area, and temporary office buildings and warehouse structures, respectively.

- Approximate location of the Area A
- Approximate location of the Area B1 & B2

Source - GEO INFO, Lands Department, HKSARG

PROJECT: Land Contamination Assessment for Drainage Improvement Works in Ta Kwu Ling - Investigation, Design and Construction		TITLE: Appendix 7.1	
ERM-Hong Kong, Limited 2509, 25/F, One Harbourfront, Tak Fung Street, Hung Hom, Kowloon Tel: (852) 2271 3000 Fax: (852) 3015 8052		Referenced Aerial Photographs	
DATE:	CHECKED:	PROJECT: 0482209	
DRAWN:	APPROVED:	SCALE:	
DRAWING:		SIZE: A4	REV: 0
© ERM This print is confidential and is supplied on the understanding that it will be used only as a record to identify or inspect parts, concepts or designs and that it is not disclosed to other persons or to be used for construction purposes without permission.			



Year 2004 (Ref: CW63043)
 No significant change was observed at the Concerned Area A, B1 and B2.



Year 2008 (Ref: CS18090):
 No significant change was observed at the Concerned Area A, B1 and B2.

- Approximate location of the Area A
- Approximate location of the Area B1 & B2

Source - GEO INFO, Lands Department, HKSARG


PROJECT: Land Contamination Assessment for Drainage Improvement Works in Ta Kwu Ling - Investigation, Design and Construction		TITLE: Appendix 7.1 Referenced Aerial Photographs											
ERM-Hong Kong, Limited 2509, 25/F, One Harbourfront, Tak Fung Street, Hung Hom, Kowloon Tel: (852) 2271 3000 Fax: (852) 3015 8052		<table border="1"> <tr> <td>DATE:</td> <td>CHECKED:</td> <td>PROJECT: 0482209</td> </tr> <tr> <td>DRAWN:</td> <td>APPROVED:</td> <td>SCALE:</td> </tr> <tr> <td colspan="2">DRAWING:</td> <td>SIZE: A4</td> <td>REV: 0</td> </tr> </table>		DATE:	CHECKED:	PROJECT: 0482209	DRAWN:	APPROVED:	SCALE:	DRAWING:		SIZE: A4	REV: 0
DATE:	CHECKED:			PROJECT: 0482209									
DRAWN:	APPROVED:	SCALE:											
DRAWING:		SIZE: A4	REV: 0										
<small>© ERM This print is confidential and is supplied on the understanding that it will be used only as a record to identify or inspect parts, concepts or designs and that it is not disclosed to other persons or to be used for construction purposes without permission.</small>													



Year 2020 (Ref: E113964C):
No significant change was observed at the Concerned Area A, B1 and B2.

- Approximate location of the Area A
- Approximate location of the Area B1 & B2

Source - GEO INFO, Lands Department, HKSARG

PROJECT: Land Contamination Assessment for Drainage Improvement Works in Ta Kwu Ling - Investigation, Design and Construction		TITLE: Appendix 7.1 Referenced Aerial Photographs	
ERM-Hong Kong, Limited 2509, 25/F, One Harbourfront, Tak Fung Street, Hung Hom, Kowloon Tel: (852) 2271 3000 Fax: (852) 2723 5660			
DATE:	CHECKED:	PROJECT: 0482209	
DRAWN:	APPROVED:	SCALE:	
DRAWING:		SIZE: A4	REV: 0
<small>© ERM This print is confidential and is supplied on the understanding that it will be used only as a record to identify or inspect parts, concepts or designs and that it is not disclosed to other persons or to be used for construction purposes without permission.</small>			