



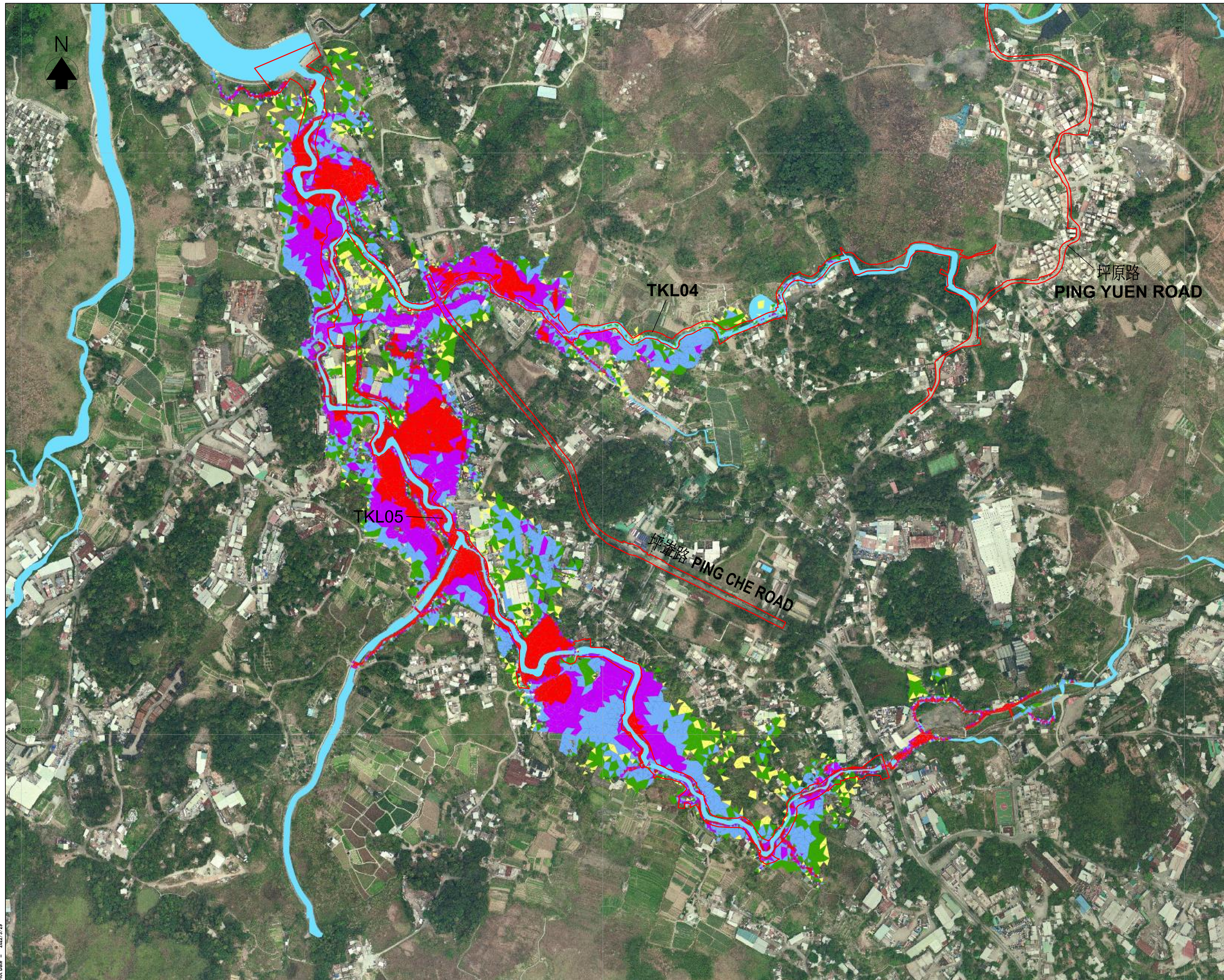


圖例

-  現有河流
- 水浸範圍 (米)
-  < 0.100
-  0.101 - 0.150
-  0.151 - 0.300
-  0.301 - 0.600
-  0.601 - 1.000
-  > 1.000



Revision	Date	Description			Initial
		Designed	Checked	Drawn	
Initial	-	-	-	-	-
Date	02/21	02/21	02/21	02/21	02/21

合同編號
CE 89/2017 (DS)

合同標題
打鼓嶺雨水排放系統改善工程
勘察研究, 設計及建造

圖紙標題
現有條件下十年重遇期的
水浸範圍圖

圖紙編號
圖 2.3

修訂版本
-

比例
A1 1 : 3000
A3 1 : 6000

 香港特別行政區政府渠務署
THE GOVERNMENT OF THE HONG KONG
SPECIAL ADMINISTRATIVE REGION
DRAINAGE SERVICES DEPARTMENT

 **binnies**
BINNIES HONG KONG LIMITED
賓尼斯工程顧問有限公司