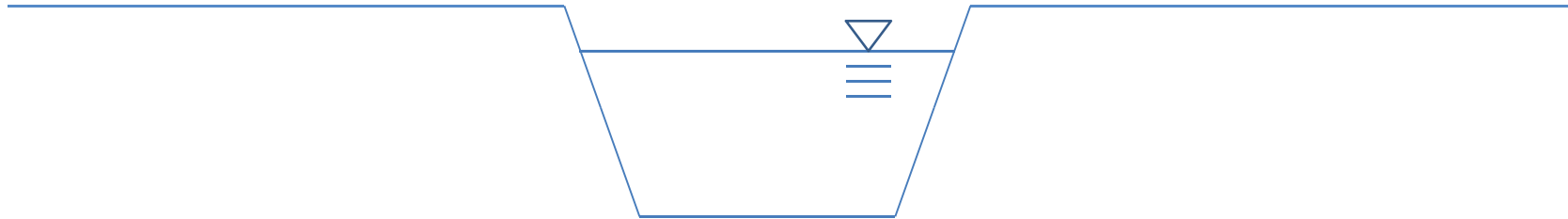
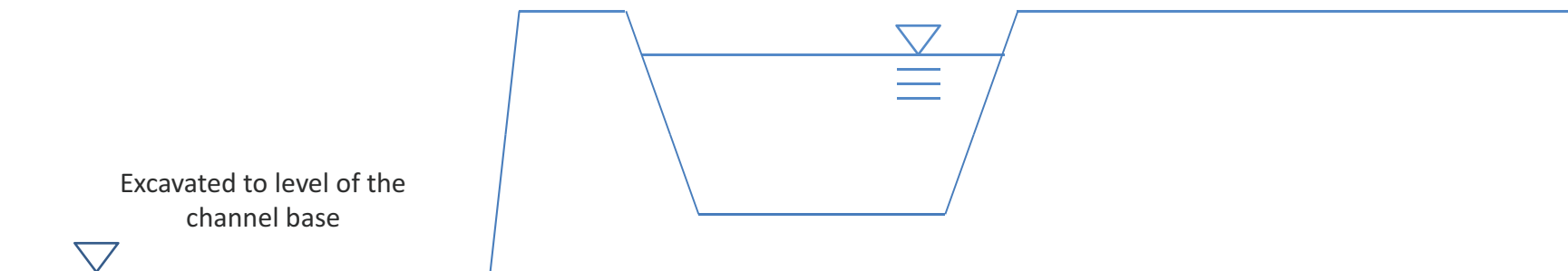


1.Before construction

Existing TKL05
River



2.Excavate one side and form an earth bund to maintain the existing river



Typical Water Diversion Scheme for Construction of Channel TKL05 and TKL04 (1/3)

Figure 2.21

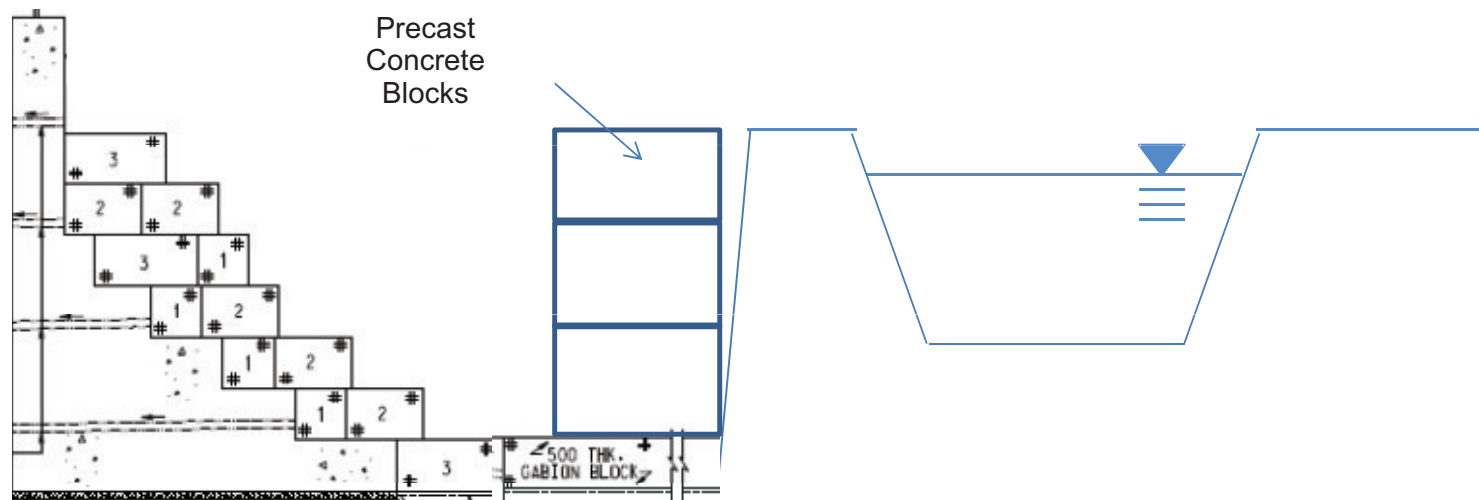


香港特別行政區政府渠務署
THE GOVERNMENT OF THE
HONG KONG
SPECIAL ADMINISTRATIVE REGION
DRAINAGE SERVICES DEPARTMENT

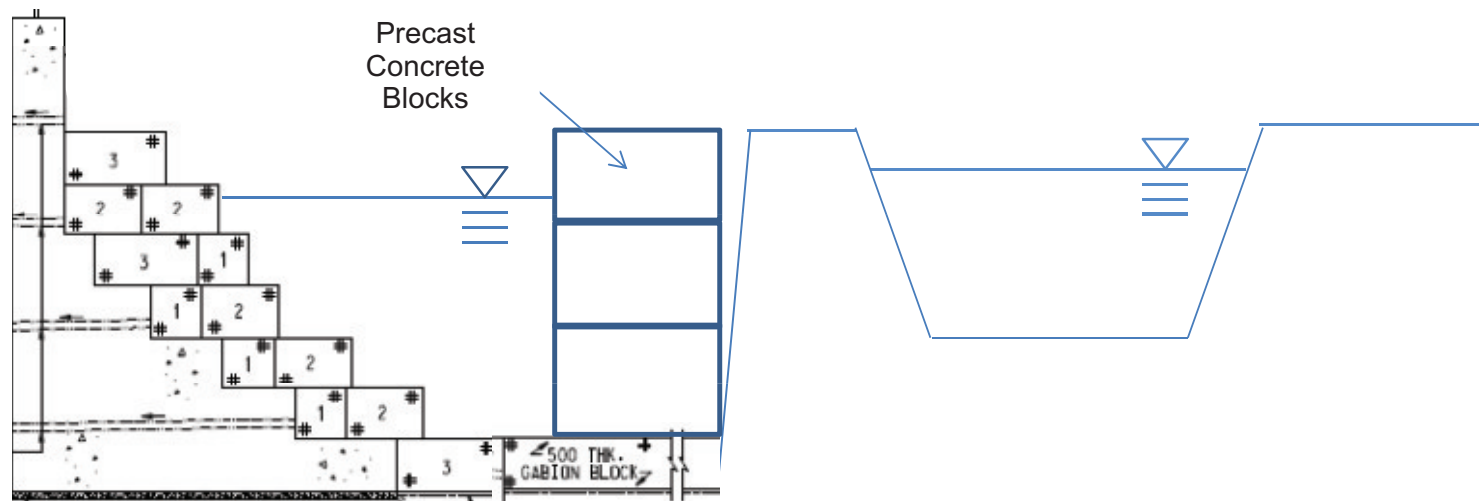


BINNIES HONG KONG LIMITED
賓尼士工程顧問有限公司

3. Construct channel wall at one side and place precast concrete blocks for diversion



4. Divert the water flow from upstream to the constructed part of channel



Typical Water Diversion Scheme for Construction of Channel TKL05 and TKL04 (2/3)

Figure 2.22

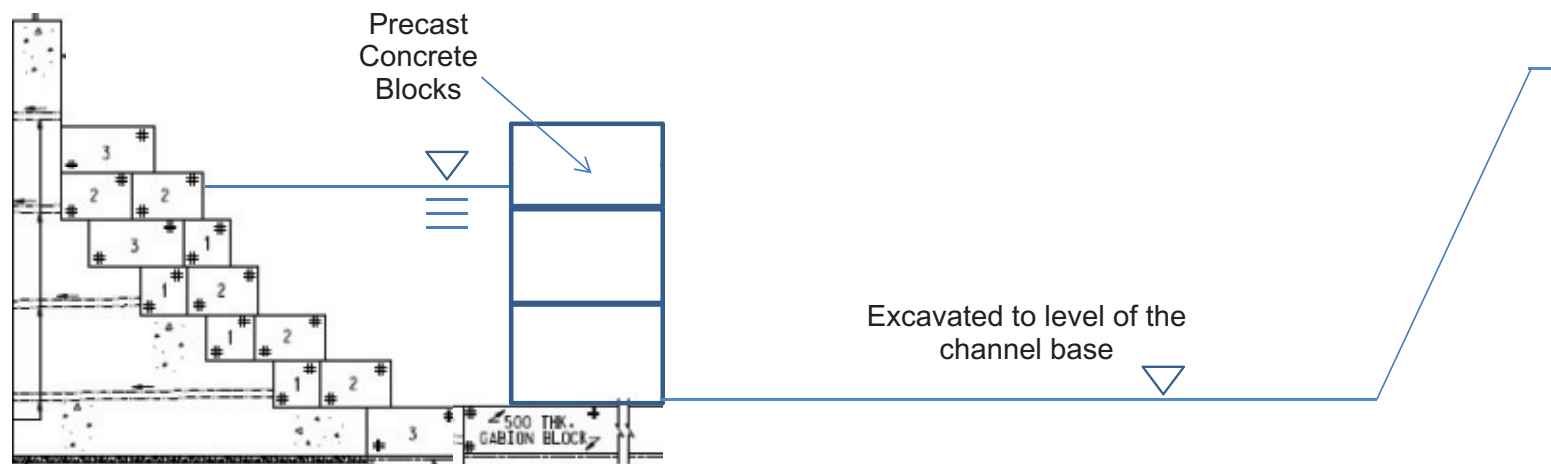


香港特別行政區政府渠務署
THE GOVERNMENT OF THE
HONG KONG
SPECIAL ADMINISTRATIVE REGION
DRAINAGE SERVICES DEPARTMENT

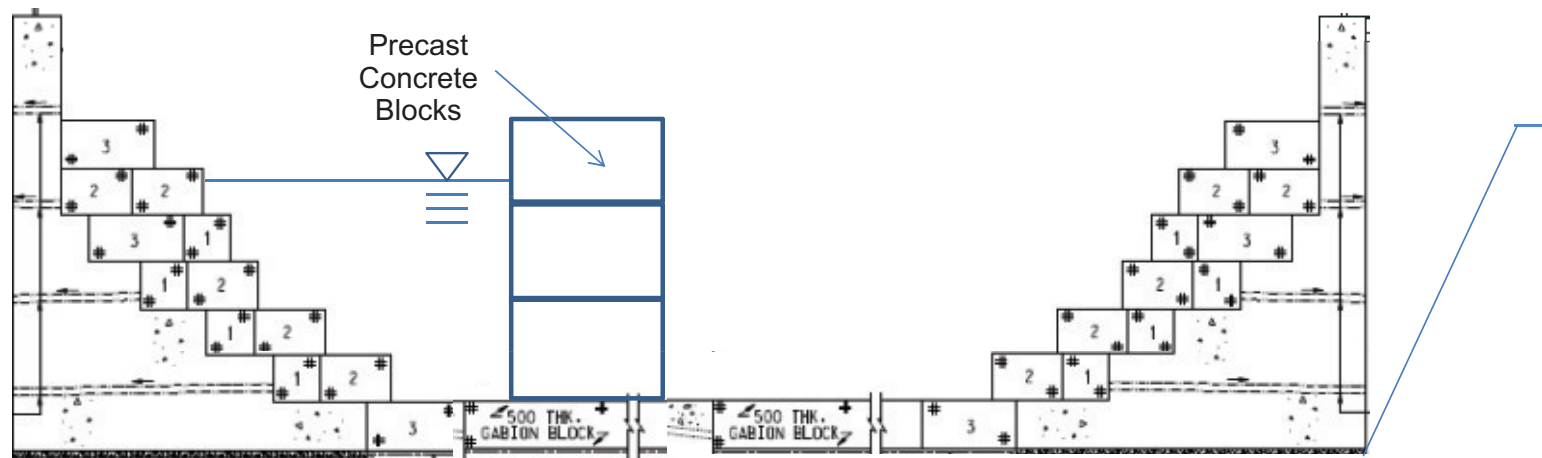


BINNIES HONG KONG LIMITED
賓尼士工程顧問有限公司

5. Excavate the remaining portion of the proposed channel



6. Construct channel bed and channel wall at the other side.



Typical Water Diversion Scheme for Construction of Channel TKL05 and TKL04 (3/3)

Figure 2.23