

a) Rocky substratum was recorded at shallow area of Location C1



b) Rocky substratum was recorded at shallow area of Location C2



c) Rocky substratum was recorded at shallow area of Location C3



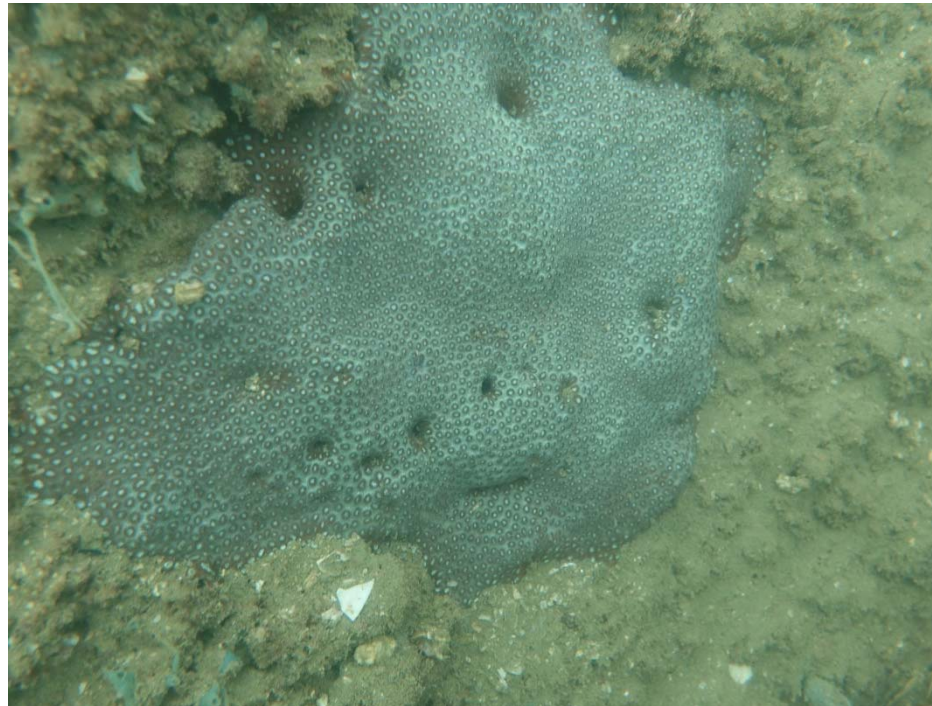
d) Large boulder (diameter >50cm) was recorded at deep area of Location C1



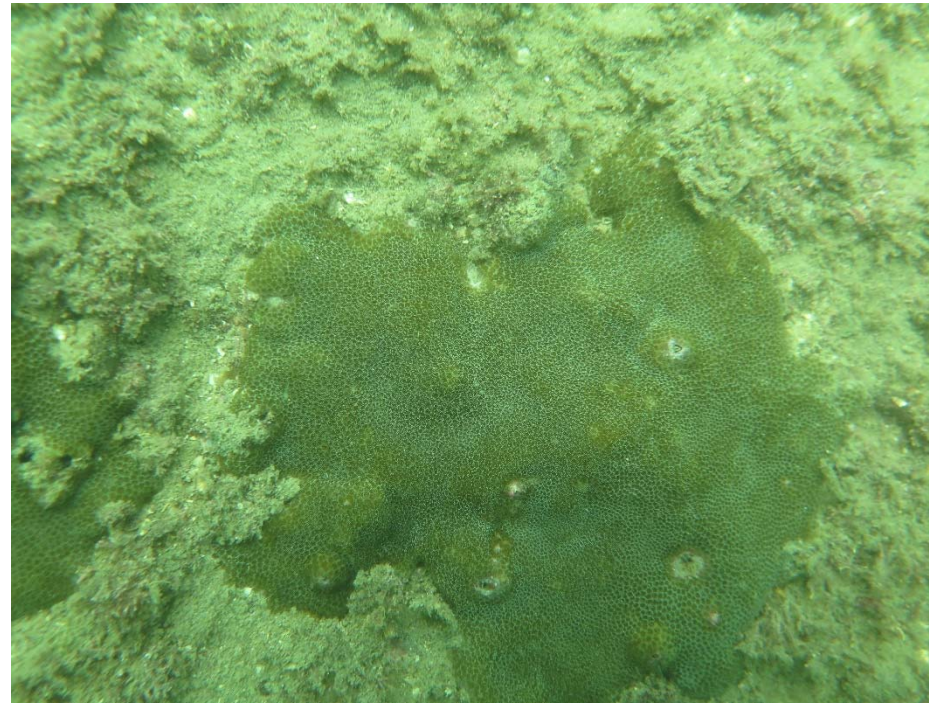
e) Sandy substratum was recorded at deep area of Location C2



c) Rocky substratum was recorded at deep area of Location C3



a) Hard coral (*Plesiastrea versipora*) was recorded at shallow area of Location C1



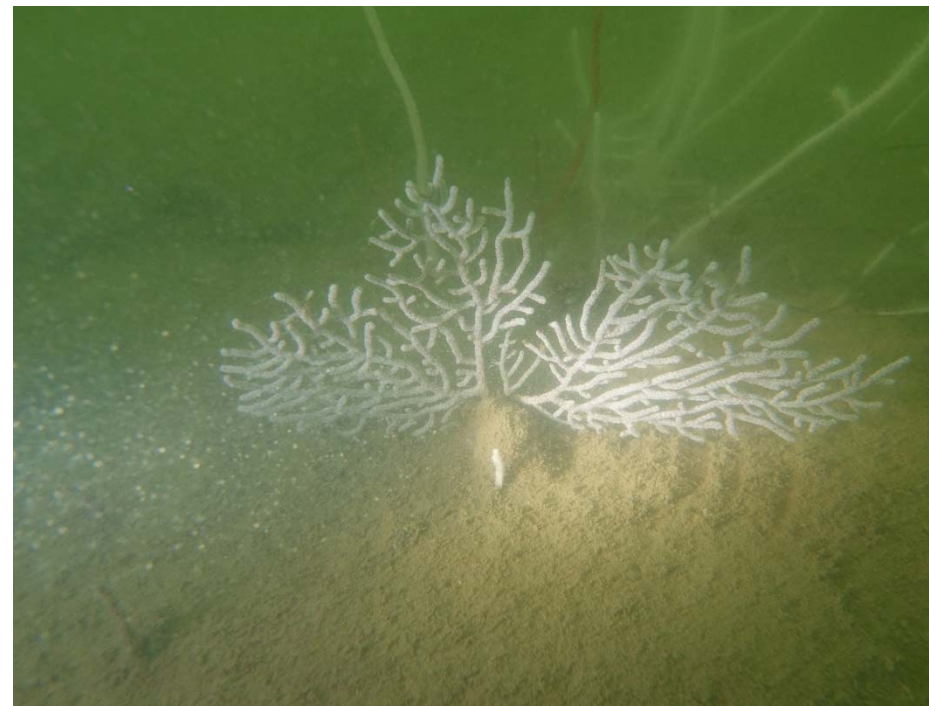
b) Hard coral (*Porites* sp.) was recorded at shallow area of Location C2



c) Other benthos (Bryozoan) was recorded at shallow area of Location C3



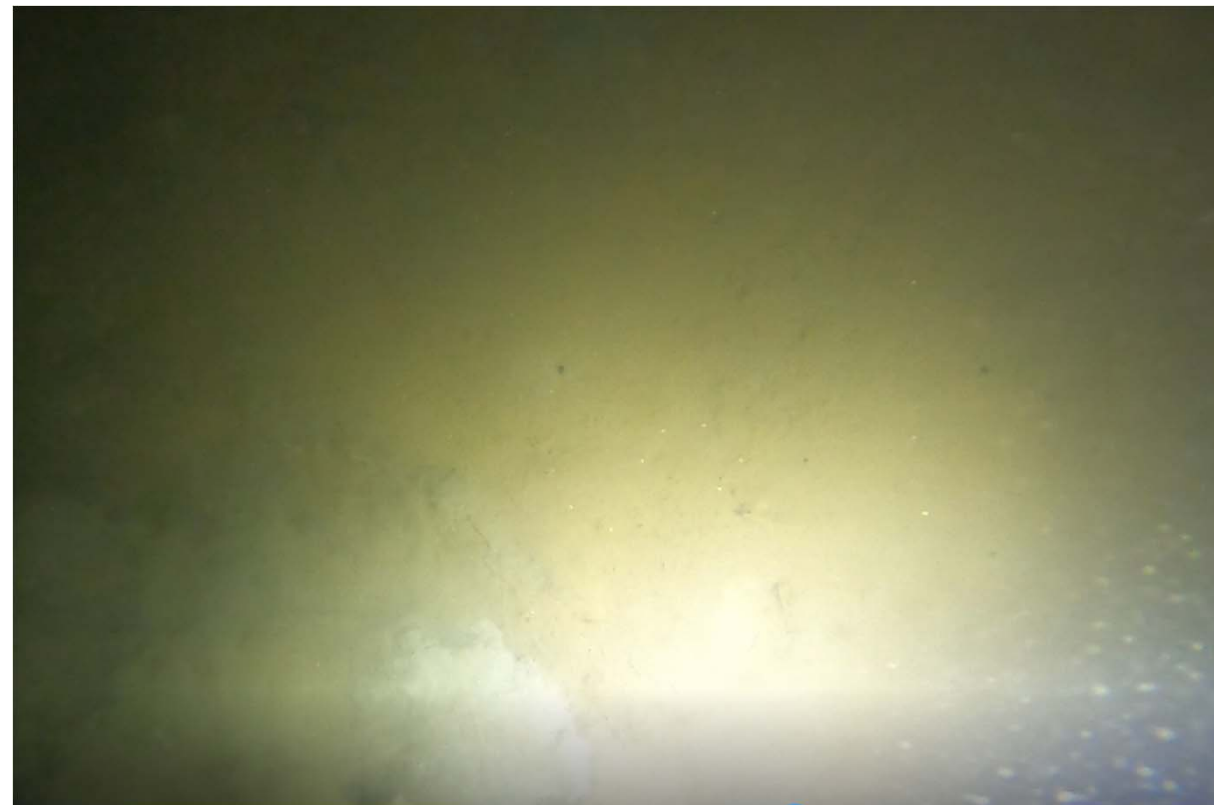
d) Hard coral (*Bernardpora stutchburyi*) was recorded at deep area of Location C1



e) Octocoral (*Menella* sp.) was recorded at deep area of Location C2



f) Ahermatypic hard coral (*Tubastraea* sp./*Dendrophyllia* sp.) was recorded at deep area of Location C3



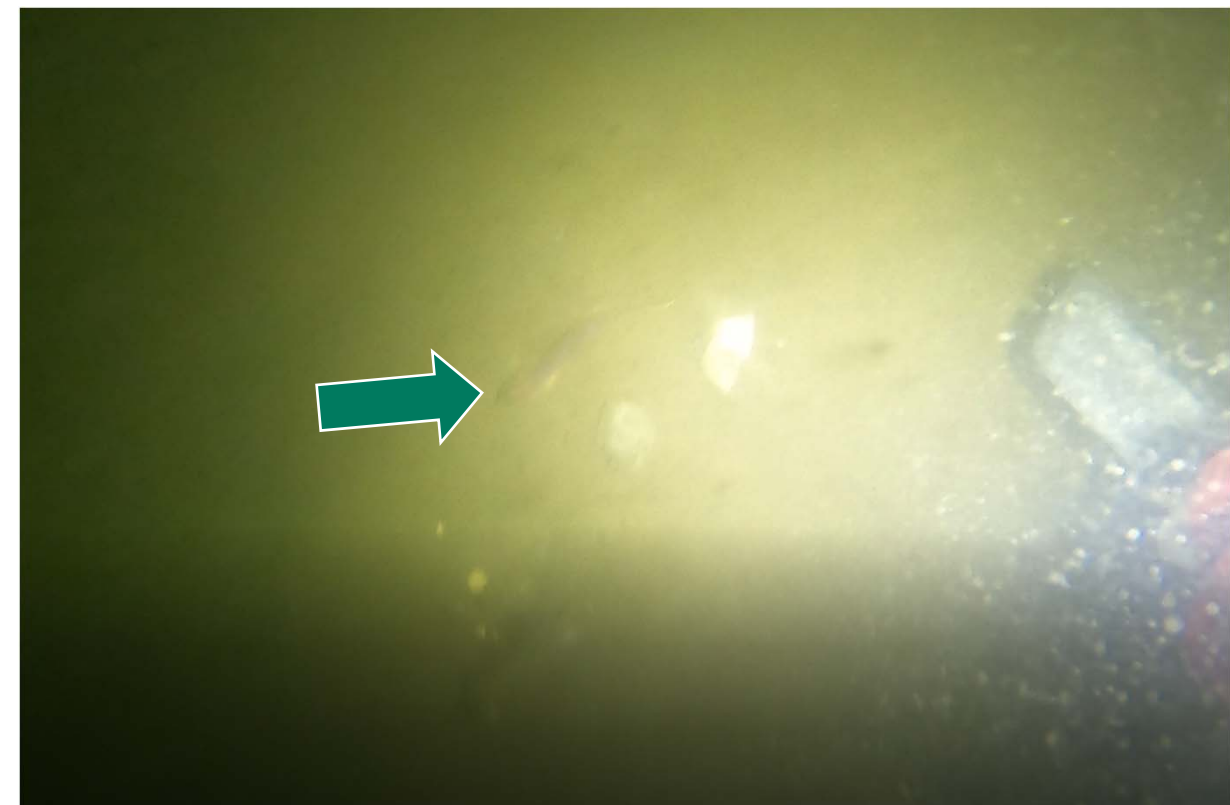
a) Silty mud substratum was recorded at Location D4



b) Gorgonian was recorded at Location D1



c) An unidentified worm was recorded at Location D3 (indicated at green arrow)



d) An unidentified fish was recorded at Location D5