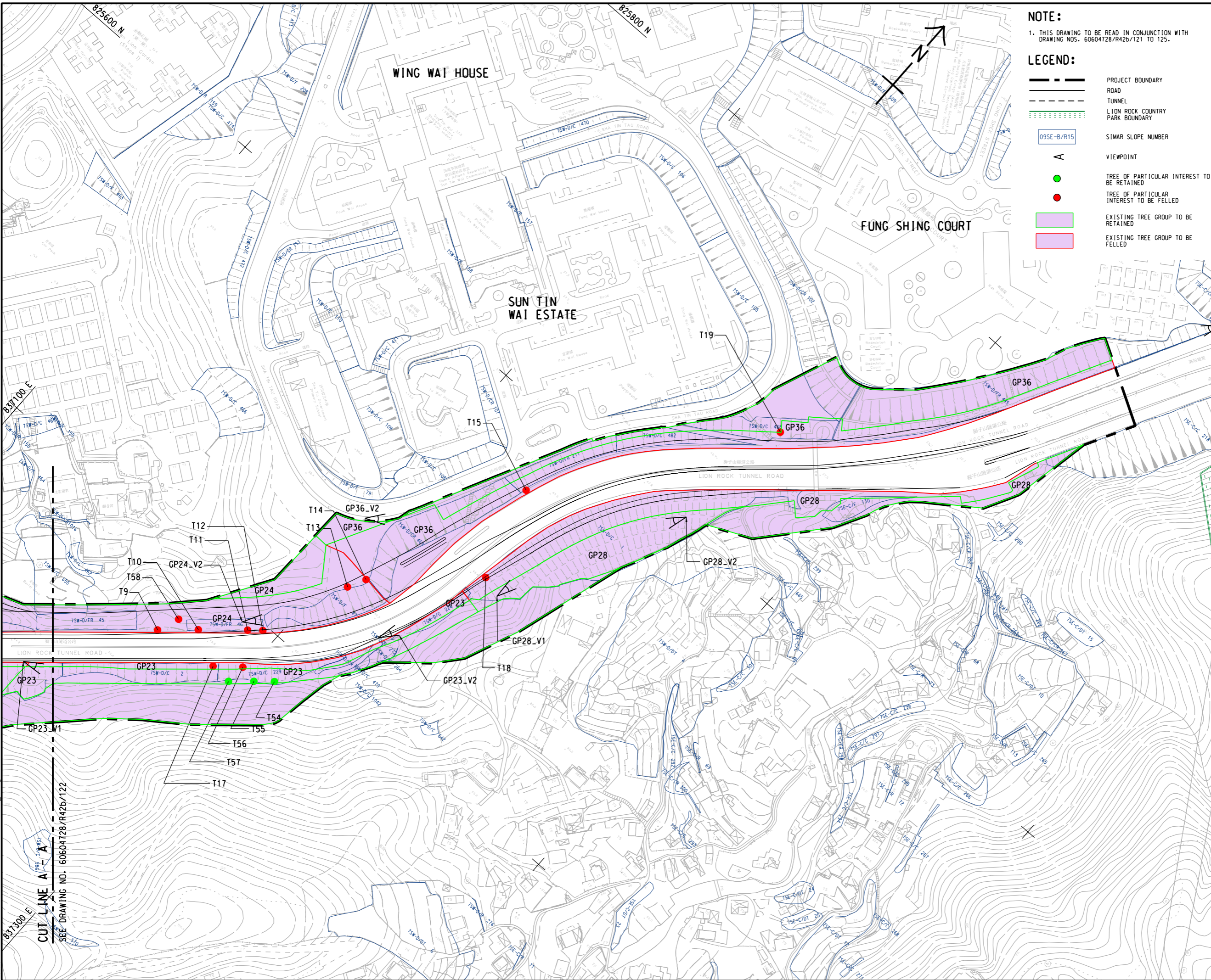


Appendix 10.1

Broad Brush Tree Survey Report



NOTE:
 1. THIS DRAWING TO BE READ IN CONJUNCTION WITH DRAWING NOS. 60604728/R42b/121 TO 125.

LEGEND:

- PROJECT BOUNDARY
- ROAD
- TUNNEL
- LION ROCK COUNTRY PARK BOUNDARY
- 09SE-B/R15 SIMAR SLOPE NUMBER
- A VIEWPOINT
- TREE OF PARTICULAR INTEREST TO BE RETAINED
- TREE OF PARTICULAR INTEREST TO BE FELLED
- EXISTING TREE GROUP TO BE RETAINED
- EXISTING TREE GROUP TO BE FELLED

ISSUE/REVISION

IR	DATE	DESCRIPTION	CHK.

STATUS
 10/12

SCALE
 1:2000

DIMENSION UNIT
 METRES

KEY PLAN
 索引圖

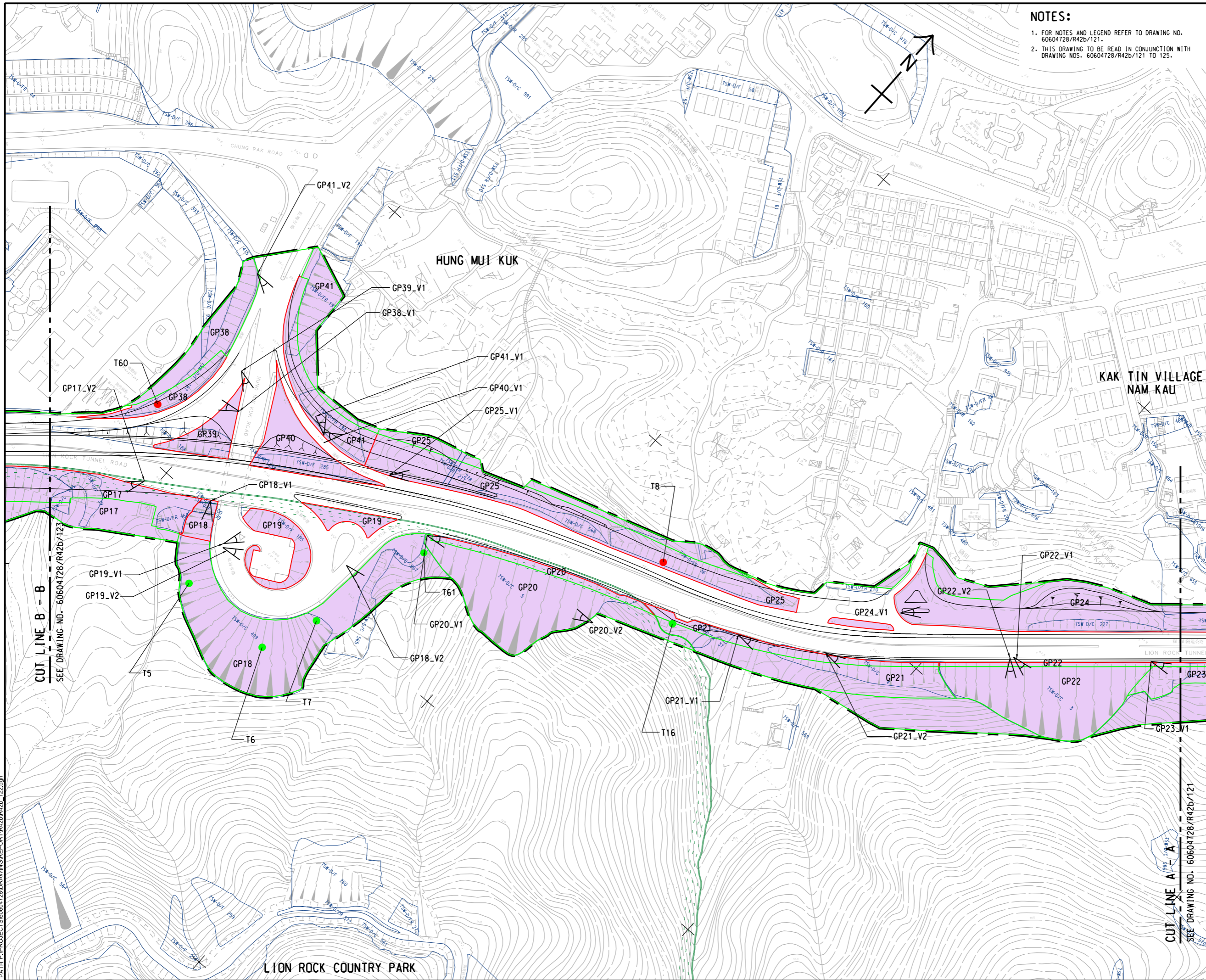
PROJECT NO.
 60604728

AGREEMENT NO.
 CE 48/2018(HY)

SHEET TITLE
 TREE SURVEY PLAN (GROUP & INDIVIDUAL)

CUT LINE A-A
 SEE DRAWING NO. 60604728/R42b/122

This drawing has been prepared for the use of AECOM's client. It may not be used, modified, reproduced or relied upon by third parties, except as agreed by AECOM or as required by law. AECOM accepts no responsibility, and denies any liability whatsoever, for any part, that uses or relies on this drawing without AECOM's express written consent. All measurements must be obtained from the stated dimensions.



NOTES:
 1. FOR NOTES AND LEGEND REFER TO DRAWING NO. 60604728/R42b/121.
 2. THIS DRAWING TO BE READ IN CONJUNCTION WITH DRAWING NOS. 60604728/R42b/121 TO 125.

AECOM

PROJECT
IMPROVEMENT OF LION ROCK TUNNEL - INVESTIGATION

CLIENT
**路政署
 HIGHWAYS DEPARTMENT**

CONSULTANT
 AECOM Asia Company Ltd.
 www.aecom.com

SUB-CONSULTANTS
 分列工程顧問公司

ISSUE/REVISION

IR	DATE	DESCRIPTION	CHK.

STATUS
 00/0

SCALE
 1:2000

DIMENSION UNIT
 METRES

KEY PLAN
 索引圖

PROJECT NO.
 60604728

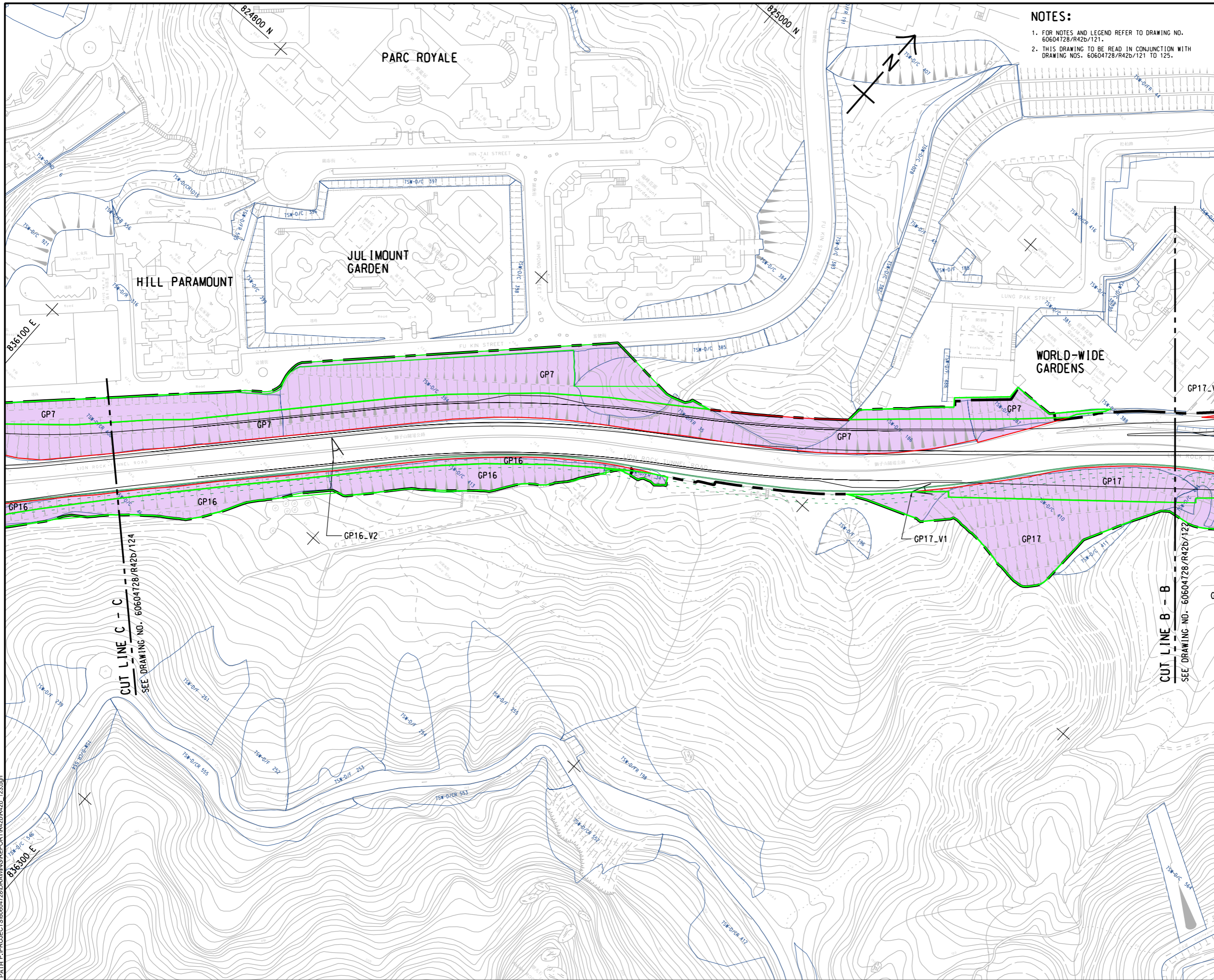
AGREEMENT NO.
 CE 48/2018(HY)

SHEET TITLE
 TREE SURVEY PLAN
 (GROUP & INDIVIDUAL)

SHEET NUMBER
 60604728/R42b/122

SHEET 2 OF 5

This drawing has been prepared for the use of AECOM's client. It may not be used, modified, reproduced or relied upon by third parties, except as required by law. AECOM accepts no responsibility, and disclaims any liability, whatsoever, for any part, that is less or more than this drawing, without AECOM's express written consent. All measurements must be obtained from the stated dimensions.



NOTES:
 1. FOR NOTES AND LEGEND REFER TO DRAWING NO. 60604728/R42b/121.
 2. THIS DRAWING TO BE READ IN CONJUNCTION WITH DRAWING NOS. 60604728/R42b/121 TO 125.

AECOM

PROJECT
 項目

IMPROVEMENT OF LION ROCK TUNNEL - INVESTIGATION

CLIENT
 業主

**路政署
 HIGHWAYS DEPARTMENT**

CONSULTANT
 土庫顧問公司

AECOM Asia Company Ltd.
 www.aecom.com

SUB-CONSULTANTS
 分判工程師有限公司

ISSUE/REVISION
 修訂

IR	DATE	DESCRIPTION	CHK.

STATUS
 狀況

SCALE
 比例

DIMENSION UNIT
 尺寸單位

A3 1 : 2000 METRES

KEY PLAN
 索引圖

PROJECT NO.
 項目編號

60604728

AGREEMENT NO.
 協議編號

CE 48/2018(HY)

SHEET TITLE
 圖紙名稱

TREE SURVEY PLAN
 (GROUP & INDIVIDUAL)

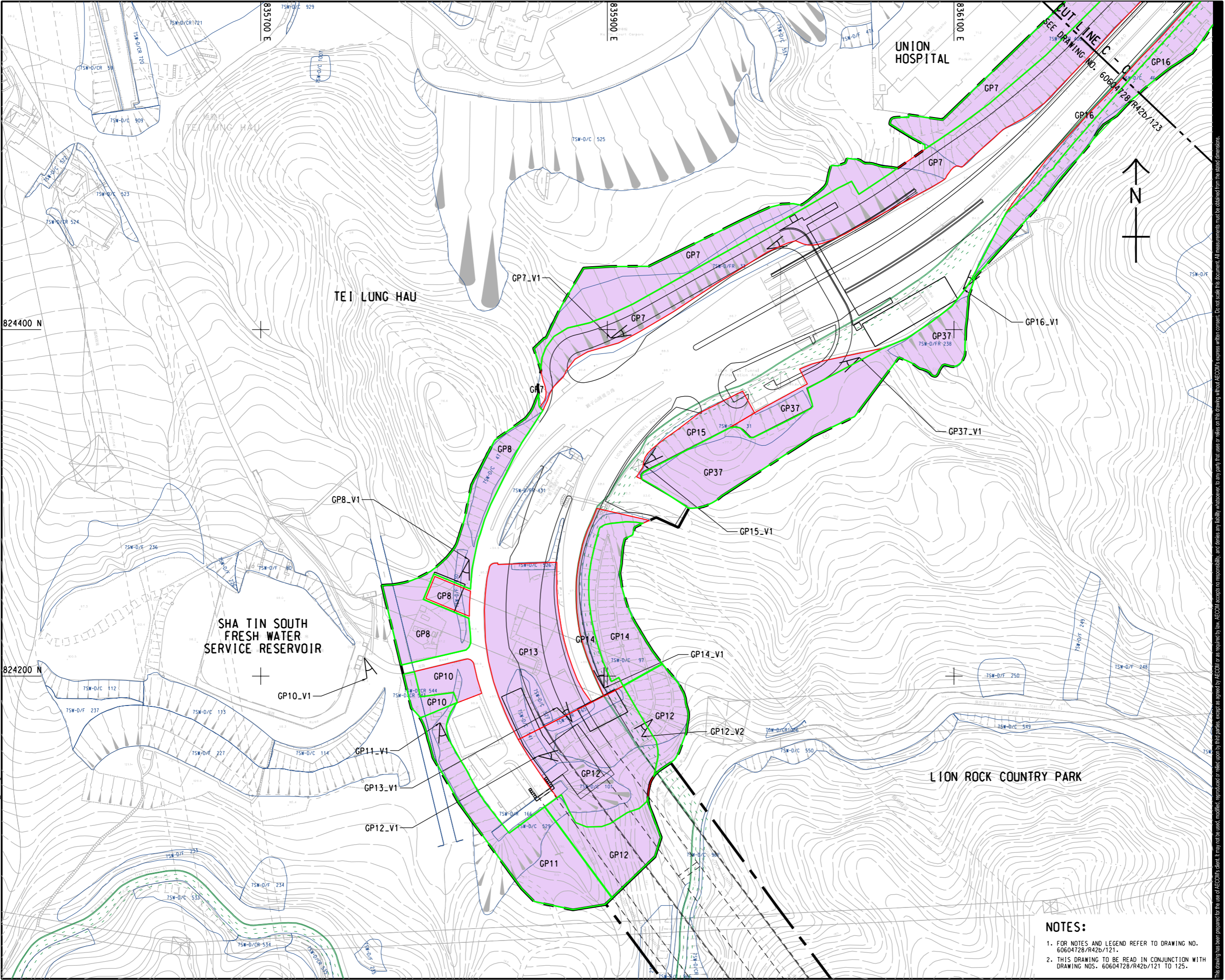
SHEET NUMBER
 圖紙編號

60604728/R42b/123

SHEET 3 OF 5

This drawing has been prepared for the use of AECOM's client. It may not be used, modified, reproduced or relied upon by third parties, except as agreed by AECOM in writing. AECOM accepts no responsibility, and disclaims any liability, whatsoever, for any part, that is used or relied on in this drawing without AECOM's express written consent. All measurements must be obtained from the stated dimensions.

ISO A1 594mm x 841mm
 Approved:
 Checked:
 Designer:
 Project Management Initials:
 6/13/2022
 File by: ZHACHC2
 PATH: P:\PROJECTS\60604728\DRAWING\REPORT\60604728-124.dgn



AECOM

PROJECT
 IMPROVEMENT OF
 LION ROCK TUNNEL -
 INVESTIGATION

CLIENT

**HIGHWAYS
 DEPARTMENT**

CONSULTANT
 AECOM Asia Company Ltd.
 www.aecom.com

SUB-CONSULTANTS
 分列工程顧問公司

ISSUE/REVISION

IR	DATE	DESCRIPTION	CHK.

STATUS

SCALE
 A3 1 : 2000

DIMENSION UNIT
 METRES

KEY PLAN

PROJECT NO.
 60604728

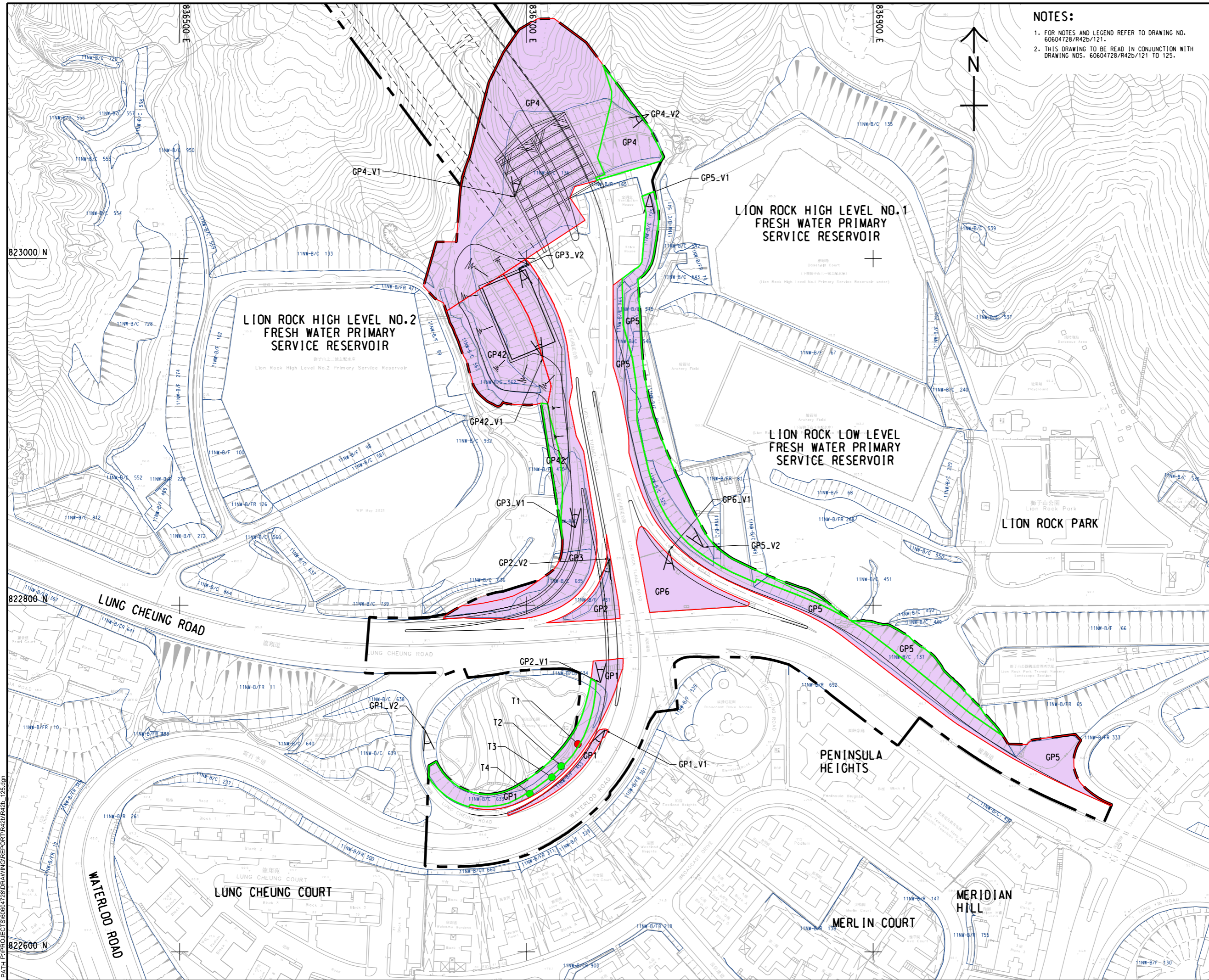
AGREEMENT NO.
 CE 48/2018(HY)

SHEET TITLE
 TREE SURVEY PLAN
 (GROUP & INDIVIDUAL)

SHEET NUMBER
 60604728/R42b/124

- NOTES:**
- FOR NOTES AND LEGEND REFER TO DRAWING NO. 60604728/R42b/121.
 - THIS DRAWING TO BE READ IN CONJUNCTION WITH DRAWING NOS. 60604728/R42b/121 TO 125.

This drawing has been prepared for the use of AECOM's client. It may not be used, modified, reproduced or relied upon by third parties, except as agreed by AECOM or as required by law. AECOM accepts no responsibility, and disclaims any liability, whatsoever, for any part, that less or more on this drawing without AECOM's express written consent. All measurements must be obtained from the stated dimensions.



NOTES:
 1. FOR NOTES AND LEGEND REFER TO DRAWING NO. 60604728/R42b/121.
 2. THIS DRAWING TO BE READ IN CONJUNCTION WITH DRAWING NOS. 60604728/R42b/121 TO 125.

NO.	DATE	DESCRIPTION	CHK.

This drawing has been prepared for the use of AECOM's client. It may not be used, modified, reproduced or relied upon by third parties, except as agreed by AECOM or as required by law. AECOM accepts no responsibility, and disclaims any liability whatsoever, for any part, that is used or relied on in this drawing without AECOM's express written consent. All measurements must be obtained from the stated dimensions.

Tree Group Assessment Schedule

Tree Group No.	Photo No.	Scientific Name	Chinese Name	Measurements			App. Quantity of the group	Amenity Value (high(H)/medium(M)/low(L))	Form (good(G)/average(A)/poor(P))	Health (good(G)/average(A)/poor(P))	Structural condition (good(G)/average(A)/poor(P))	Suitability for Transplanting		Conservation Status	Recommendation (Retain/Affected)			Justification	Maintenance department to provide comments on TPRP		Slope Feature No.	Additional Remarks
				Height (m)	DBH (mm)	Crown spread (m)						(high(H)/medium(M)/low(L))	Remarks		Retain %	Retain	Affected		Before	After		
GP1	GP1_V1, GP1_V2	<i>Melaleuca cajuputi subsp. cumingiana</i>	白千層	6-8	180-300	3-4	5	M	A	A	A	L	b,c,h	No	53%Retain	25	22	Conflict with works	LCSD & HyD	LCSD & HyD	11NW-B/CR634 11NW-B/C633(1) 11NW-B/C639 11NW-B/F453	-
		<i>Acacia confusa</i>	台灣相思	5.5-10	385-450	6-8	2	M	A	A	A	L	b,c,h	No								
		<i>Litsea glutinosa</i>	潺槁樹	4-8	170-300	4-6	4	M	A	A	A	L	b,c,h	No								
		<i>Livistona chinensis</i>	蒲葵	8-10	180-220	3-4	7	M	A	A	A	L	b,c,h	No								
		<i>Koelreuteria bipinnata</i>	複羽葉欖樹	10	220	8	1	M	A	A	A	L	b,c,h	No								
		<i>Cratogeomys cochinchinense</i>	黃牛木	7-9	150-300	2-5	3	M	A	A	A	L	b,c,h	No								
		<i>Celtis sinensis</i>	朴樹	8	100	5	1	M	A	A	A	L	b,c,h	No								
		<i>Lophostemon confertus</i>	紅膠木	2-10	120-220	1-5	18	L-M	A	A	A	L	b,c,h	No								
		<i>Ficus religiosa</i>	菩提樹	7-10	177-200	4-6	2	M	A	A	A	L	b,c,h	No								
		<i>Eucalyptus tereticornis</i>	細葉桉	6-10	183-200	4-5	4	M	A	A	A	L	b,c,h	No								
					sub-total	47																
GP2	GP2_V1, GP2_V2	<i>Corymbia citriodora</i>	檸檬桉	12	270	4	1	M	A	A	A	L	b,c,h	No	0%Retain	0	6	Conflict with works	LCSD & HyD	LCSD & HyD	11NW-B/F431	-
		<i>Litsea glutinosa</i>	潺槁樹	4	250	4	1	M	A	A	A	L	b,c,h	No								
		<i>Thevetia peruviana</i>	黃花夾竹桃	4-5	150-200	4-6	3	M	A	A	A	L	b,c,h	No								
		<i>Morus alba</i>	桑	7	250	7	1	M	A	A	A	L	b,c,h	No								
					sub-total	6																
GP3	GP3_V1, GP3_V2	<i>Zanthoxylum avicennae</i>	筋攏花椒	4	120	4	1	M	A	A	A	L	b,c,h	No	9%Retain	23	227	Conflict with works	HyD	HyD	11NW-B/C635(1) 11NW-B/C635(2) 11NW-B/C727 11NW-B/C136 11NW-B/C562 11NW-B/C563	-
		<i>Mallotus paniculatus</i>	白楸	4-8	180-200	2-5	9	M	A	A	A	L	b,c,h	No								
		<i>Ficus subpisocarpa</i>	筆管榕	6	400	10	1	M	A	A	A	L	b,c,h	No								
		<i>Acacia confusa</i>	台灣相思	7-10	100-350	5-10	208	M	A	A	A	L	b,c,h	No								
		<i>Litsea glutinosa</i>	潺槁樹	4-6	180-220	5-6	5	M	A	A	A	L	b,c,h	No								
		<i>Celtis sinensis</i>	朴樹	8-10	120-350	3-8	7	M	A	A	A	L	b,c,h	No								
		<i>Macaranga tanarius var. tomentosa</i>	血桐	7-8	120-150	4-8	8	M	A	A	A	L	b,c,h	No								
		<i>Machilus chekiangensis</i>	浙江潤楠	7	180	4	1	M	A	A	A	L	b,c,h	No								
		<i>Leucaena leucocephala</i>	銀合歡	2-4	140-180	2-4	5	M	A	A	A	L	b,c,h	No								
		<i>Eucalyptus tereticornis</i>	細葉桉	12	200	4	1	M	A	A	A	L	b,c,h	No								
		<i>Casuarina equisetifolia</i>	木麻黃	7-10	120-150	4-5	4	M	A	A	A	L	b,c,h	No								
					sub-total	250																
GP4	GP4_V1, GP4_V2	<i>Acacia confusa</i>	台灣相思	6-11	100-400	3-8	463	M	A	A	A	L	b,c,h	No	11%Retain	105	814	Conflict with works	HyD	HyD	11NW-B/C136	-
		<i>Eucalyptus tereticornis</i>	細葉桉	8-14	100-350	1-8	430	M	A	A	A	L	b,c,h	No								
		<i>Machilus breviflora</i>	短序潤楠	6	120	8	1	M	A	A	A	L	b,c,h	No								
		<i>Mallotus paniculatus</i>	白楸	6-8	120-150	4-8	6	M	A	A	A	L	b,c,h	No								
		<i>Leucaena leucocephala</i>	銀合歡	4-8	100-120	4-6	2	M	A	A	A	L	b,c,h	No								
		<i>Sterculia lanceolata</i>	假蒺藜	6-7	100-120	4-5	7	M	A	A	A	L	b,c,h	No								
		<i>Celtis sinensis</i>	朴樹	12	198	7	1	M	A	A	A	L	b,c,h	No								
		<i>Casuarina equisetifolia</i>	木麻黃	8-9	150-200	4-5	7	M	A	A	A	L	b,c,h	No								
		<i>Ficus hispida</i>	對葉榕	3-6	115-120	4-8	2	M	A	A	A	L	b,c,h	No								
					sub-total	919																

Tree Group No.	Photo No.	Scientific Name	Chinese Name	Measurements			App. Quantity of the group	Amenity Value (high(H)/medium(M)/low(L))	Form (good(G)/average(A)/poor(P))	Health (good(G)/average(A)/poor(P))	Structural condition (good(G)/average(A)/poor(P))	Suitability for Transplanting		Conservation Status	Recommendation (Retain/Affected)			Justification	Maintenance department to provide comments on TPRP		Slope Feature No.	Additional Remarks
				Height (m)	DBH (mm)	Crown spread (m)						(high(H)/medium(M)/low(L))	Remarks		Retain %	Retain	Affected		Before	After		
GP5	GP5_V1, GP5_V2	<i>Celtis sinensis</i>	朴樹	6-10	150-250	4-8	17	M	A	A	A	L	b,c,h	No	74%Retain	105	36	Conflict with works	WSD & HyD	WSD & HyD	11NW-B/C725 11NW-B/R766 11NW-B/C545 11NW-B/C546 11NW-B/C545 11NW-B/C546 11NW-B/F80 11NW-B/C525 11NW-B/C547 11NW-B/C548 11NW-B/C137(2) 11NW-B/C137(1)	-
		<i>Sterculia lanceolata</i>	假蒺藜	4-10	120-250	2-7	19	M	A	A	A	L	b,c,h	No								
		<i>Cratogeomys cochinchinense</i>	黃牛木	6-7	120-160	2-6	11	M	A	A	A	L	b,c,h	No								
		<i>Macaranga tanarius var. tomentosa</i>	血桐	4-7	140-220	5-7	21	M	A	A	A	L	b,c,h	No								
		<i>Mallotus paniculatus</i>	白楸	5-8	150-180	2-7	6	M	A	A	A	L	b,c,h	No								
		<i>Leucaena leucocephala</i>	銀合歡	6-10	140-200	2-5	9	M	A	A	A	L	b,c,h	No								
		<i>Tetradium glabrifolium</i>	棟葉吳茱萸	10	200	5	1	M	A	A	A	L	b,c,h	No								
		<i>Machilus breviflora</i>	短序潤楠	8	160	5	1	M	A	A	A	L	b,c,h	No								
		<i>Lophostemon confertus</i>	紅膠木	6-8	150-250	3-5	5	M	A	A	A	L	b,c,h	No								
		<i>Acacia confusa</i>	台灣相思	8-10	150-500	6-12	25	M	A	A	A	L	b,c,h	No								
		<i>Schefflera heptaphylla</i>	鵝掌柴	4-5	100-120	3-4	6	M	A	A	A	L	b,c,h	No								
		<i>Schima superba</i>	木荷	8	300	8	1	M	A	A	A	L	b,c,h	No								
		<i>Ficus microcarpa</i>	細葉榕	7-8	200-500	6-12	7	M	A	A	A	L	b,c,h	No								
		<i>Melia azedarach</i>	楝	5-6	150-200	4-5	5	M	A	A	A	L	b,c,h	No								
<i>Litsea glutinosa</i>	潺槁樹	2-5	100-200	1-5	6	M	A	A	A	L	b,c,h	No										
<i>Ficus virens</i>	黃葛樹	5	230	7	1	M	A	A	A	L	b,c,h	No										
					sub-total	141																
GP6	GP6_V1	<i>Acacia confusa</i>	台灣相思	8	400	12	1	M	A	A	A	L	b,c,h	No	0%Retain	0	31	Conflict with works	LCSD	LCSD	-	-
		<i>Tabebuia chrysantha</i>	黃鐘木	8-9	100-150	4-6	26	M	A	A	A	L	b,c,h	No								
		<i>Eucalyptus tereticornis</i>	細葉桉	10-12	350-400	6-8	3	M	A	A	A	L	b,c,h	No								
		<i>Bombax ceiba</i>	木棉	10	250	5	1	M	A	A	A	L	b,c,h	No								
					sub-total	31																
GP7	GP7_V1, GP7_V2	<i>Albizia lebeck</i>	大葉合歡	6-8	110-250	4-8	48	M	A	A	A	L	b,c,h	No	45%Retain	366	441	Conflict with works	HyD	HyD	7SWD/FR33 7SWD/FR35 7SWD/F186 7SWD/CR400 7SWD/C387 7SWD/C394	-
		<i>Acacia confusa</i>	台灣相思	8-12	120-500	5-10	468	M	A	A	A	L	b,c,h	No								
		<i>Hibiscus tiliaceus</i>	黃槿	4-6	130-220	4-8	36	M	A	A	A	L	b,c,h	No								
		<i>Casuarina equisetifolia</i>	木麻黃	8-10	120-230	4-5	27	M	A	A	A	L	b,c,h	No								
		<i>Melia azedarach</i>	楝	6-10	145-280	3-6	15	M	A	A	A	L	b,c,h	No								
		<i>Macaranga tanarius var. tomentosa</i>	血桐	4-6	100-250	2-4	141	M	A	A	A	L	b,c,h	No								
		<i>Leucaena leucocephala</i>	銀合歡	6-10	100-300	4-6	72	M	A	A	A	L	b,c,h	No								
					sub-total	807																
GP8	GP8_V1, GP8_V2	<i>Macaranga tanarius var. tomentosa</i>	血桐	4-5	110-250	4-8	5	M	A	A	A	L	b,c,h	No	88%Retain	31	4	NIL	WSD & HyD	WSD & HyD	7SWD/C47 7SWD/F430(1) 7SW-D/F430(2) 7SW-D/F430(1)	-
		<i>Hibiscus tiliaceus</i>	黃槿	4-6	138-180	4-6	10	M	A	A	A	L	b,c,h	No								
		<i>Litsea glutinosa</i>	潺槁樹	6	160	3	1	M	A	A	A	L	b,c,h	No								
		<i>Acacia confusa</i>	台灣相思	6-8	120-400	3-8	2	M	A	A	A	L	b,c,h	No								
		<i>Machilus breviflora</i>	短序潤楠	8	250	5	1	M	A	A	A	L	b,c,h	No								
		<i>Sterculia lanceolata</i>	假蒺藜	8	200	5	1	M	A	A	A	L	b,c,h	No								
		<i>Ficus elastica</i>	印度橡樹	8	205	5	1	M	A	A	A	L	b,c,h	No								
		<i>Litsea monopetala</i>	假柿木薑子	8	380	5	1	M	A	A	A	L	b,c,h	No								
		<i>Elaeocarpus decipiens</i>	杜英	4-9	145-150	4-5	9	M	A	A	A	L	b,c,h	No								
		<i>Mallotus paniculatus</i>	白楸	6	150	4	1	M	A	A	A	L	b,c,h	No								
		<i>Artocarpus heterophyllus</i>	菠蘿蜜	8	250	4	1	M	A	A	A	L	b,c,h	No								
<i>Celtis sinensis</i>	朴樹	6-8	150-200	5-6	2	M	A	A	A	L	b,c,h	No										
					sub-total	35																

Tree Group No.	Photo No.	Scientific Name	Chinese Name	Measurements			App. Quantity of the group	Amenity Value (high(H)/medium(M)/low(L))	Form (good(G)/average(A)/poor(P))	Health (good(G)/average(A)/poor(P))	Structural condition (good(G)/average(A)/poor(P))	Suitability for Transplanting		Conservation Status	Recommendation (Retain/Affected)			Justification	Maintenance department to provide comments on TPRP		Slope Feature No.	Additional Remarks
				Height (m)	DBH (mm)	Crown spread (m)						(high(H)/medium(M)/low(L))	Remarks		Retain %	Retain	Affected		Before	After		
GP10	GP10_V1	<i>Acacia confusa</i>	台灣相思	8-10	100-230	6-7	2	M	A	A	A	L	b,c,h	No	27%Retain	3	8	NIL	WSD & HyD & Tunnel Operator	WSD & HyD & Tunnel Operator	7SW-D/C529 7SW-DC114	-
		<i>Celtis sinensis</i>	朴樹	6-8	100-180	5-6	2	M	A	A	A	L	b,c,h	No								
		<i>Schefflera heptaphylla</i>	鵝掌柴	4	100	2	1	L	A	A	A	L	b,c,h	No								
		<i>Syzygium jambos</i>	蒲桃	8	300	8	1	M	A	A	A	L	b,c,h	No								
		<i>Macaranga tanarius var. tomentosa</i>	血桐	6-8	150-280	6-8	1	M	A	A	A	L	b,c,h	No								
		<i>Alangium chinense</i>	八角楓	6	120	4	1	M	A	A	A	L	b,c,h	No								
		<i>Sterculia lanceolata</i>	假蒟蒻	7	120	5	1	M	A	A	A	L	b,c,h	No								
		<i>Litsea monopetala</i>	假柿木薑子	8-10	300-400	4-8	1	M	A	A	A	L	b,c,h	No								
		<i>Mangifera indica</i>	芒果	10	300	8	1	M	A	A	A	L	b,c,h	No								
						sub-total	11															
GP11	GP11_V1	<i>Litsea monopetala</i>	假柿木薑子	8-10	120-300	5-7	6	M	A	A	A	L	b,c,h	No	100%Retain	74	0	NIL	HyD & AFCD	HyD & AFCD	7SW-D/C529	-
		<i>Ficus virens</i>	黃葛樹	2-8	140-300	2-5	25	M	A	A	A	L	b,c,h	No								
		<i>Celtis sinensis</i>	朴樹	7-8	100	3-4	2	M	A	A	A	L	b,c,h	No								
		<i>Melia azedarach</i>	楝	10-12	120-350	7-10	12	M	A	A	A	L	b,c,h	No								
		<i>Mallotus paniculatus</i>	白楸	5-8	120-200	3-5	5	M	A	A	A	L	b,c,h	No								
		<i>Alangium chinense</i>	八角楓	8-10	150-280	4-5	15	M	A	A	A	L	b,c,h	No								
		<i>Schefflera heptaphylla</i>	鵝掌柴	4-6	180-250	4-6	5	M	A	A	A	L	b,c,h	No								
		<i>Acacia confusa</i>	台灣相思	8-10	400-500	6-10	3	M	A	A	A	L	b,c,h	No								
		<i>Machilus breviflora</i>	短序潤楠	8	250	5	1	M	A	A	A	L	b,c,h	No								
						sub-total	74															
GP12	GP12_V1, GP12_V2	<i>Machilus breviflora</i>	短序潤楠	8-10	150-300	5-8	34	M	A	A	A	L	b,c,h	No	43%Retain	147	192	Conflict with works	HyD & AFCD	HyD & AFCD	7SW-D/C541 7SW-D/C101 7SW-D/R165 7SW-D/C527	Partly within Country Park
		<i>Sterculia lanceolata</i>	假蒟蒻	4-6	130-150	3-6	2	M	A	A	A	L	b,c,h	No								
		<i>Alangium chinense</i>	八角楓	6-8	95-120	2-4	3	M	A	A	A	L	b,c,h	No								
		<i>Schefflera heptaphylla</i>	鵝掌柴	7-8	180-200	4-5	8	M	A	A	A	L	b,c,h	No								
		<i>Ficus hispida</i>	對葉榕	5-6	120-150	5-6	3	M	A	A	A	L	b,c,h	No								
		<i>Lophostemon confertus</i>	紅膠木	6-8	150-200	4-7	7	M	A	A	A	L	b,c,h	No								
		<i>Eucalyptus tereticornis</i>	細葉桉	6-14	150-300	4-8	163	M	A	A	A	L	b,c,h	No								
		<i>Acacia confusa</i>	台灣相思	5-9	120-250	5-8	109	M	A	A	A	L	b,c,h	No								
		<i>Eucalyptus robusta</i>	大葉桉	12-14	138-300	4-6	9	M	A	A	A	L	b,c,h	No								
		<i>Tetradium glabrifolium</i>	棟葉吳茱萸	8	120	4	1	M	A	A	A	L	b,c,h	No								
						sub-total	339															

Tree Group No.	Photo No.	Scientific Name	Chinese Name	Measurements			App. Quantity of the group	Amenity Value (high(H)/medium(M)/low(L))	Form (good(G)/average(A)/poor(P))	Health (good(G)/average(A)/poor(P))	Structural condition (good(G)/average(A)/poor(P))	Suitability for Transplanting		Conservation Status	Recommendation (Retain/Affected)			Justification	Maintenance department to provide comments on TPRP		Slope Feature No.	Additional Remarks
				Height (m)	DBH (mm)	Crown spread (m)						(high(H)/medium(M)/low(L))	Remarks		Retain %	Retain	Affected		Before	After		
GP13	GP13_V1	<i>Melaleuca cajuputi subsp. cumingiana</i>	白千層	10-12	250-300	5-7	4	M	A	A	A	L	b,c,h	No	0%Retain	0	20	Conflict with works	HyD & Tunnel Operator	HyD & Tunnel Operator	7SW-D/C526 7SW-D/C541 7SW-D/C527	-
		<i>Eucalyptus robusta</i>	大葉桉	10-12	200-250	5-7	6	M	A	A	A	L	b,c,h	No								
		<i>Ficus virens</i>	黃葛樹	9-10	300-350	5-7	2	M	A	A	A	L	b,c,h	No								
		<i>Acacia confusa</i>	台灣相思	9-10	200-300	7-8	3	M	A	A	A	L	b,c,h	No								
		<i>Artocarpus heterophyllus</i>	菠蘿蜜	8	195	5	1	M	A	A	A	L	b,c,h	No								
		<i>Michelia x alba</i>	白蘭	8-12	142-200	4-6	2	M	A	A	A	L	b,c,h	No								
		<i>Bombax ceiba</i>	木棉	8-10	151-180	5-6	2	M	A	A	A	L	b,c,h	No								
						sub-total	20															
GP14	GP14_V1	<i>Mallotus paniculatus</i>	白楸	4-8	100-120	4-6	6	M	A	A	A	L	b,c,h	No	69%Retain	25	11	Conflict with works	HyD & Tunnel Operator	HyD & Tunnel Operator	7SW-D/C97(1) 7SW-D/C97(2)	Within Country Park
		<i>Eucalyptus tereticornis</i>	細葉桉	7-10	156-180	3-5	11	M	A	A	A	L	b,c,h	No								
		<i>Acacia confusa</i>	台灣相思	6-9	150-280	5-7	19	M	A	A	A	L	b,c,h	No								
						sub-total	36															
GP15	GP15_V1	<i>Alangium chinense</i>	八角楓	8-10	200-250	5-6	8	M	A	A	A	L	b,c,h	No	0%Retain	0	42	Conflict with works	HyD	HyD	7SW-D/F31	Within Country Park
		<i>Lophostemon confertus</i>	紅膠木	8-11	350-450	4-6	22	M	A	A	A	L	b,c,h	No								
		<i>Schefflera heptaphylla</i>	鵝掌柴	8-9	156-220	5-6	3	M	A	A	A	L	b,c,h	No								
		<i>Ficus variegata</i>	青果榕	8	300	8	1	M	A	A	A	L	b,c,h	No								
		<i>Acacia confusa</i>	台灣相思	8	350	4	1	M	A	A	A	L	b,c,h	No								
		<i>Sterculia lanceolata</i>	假蒟蒻	7-8	200-250	5-6	3	M	A	A	A	L	b,c,h	No								
		<i>Syzygium jambos</i>	蒲桃	6	150	5	1	M	A	A	A	L	b,c,h	No								
		<i>Dimocarpus longan</i>	龍眼	8	180	5	1	M	A	A	A	L	b,c,h	No								
		<i>Celtis sinensis</i>	朴樹	8	220	5	1	M	A	A	A	L	b,c,h	No								
						sub-total	42															
GP16	GP16_V1, GP16_V2	<i>Ficus microcarpa</i>	細葉榕	4-6	150-200	2-6	3	M	A	A	A	L	b,c,h	No	84%Retain	46	9	Conflict with works	HyD	HyD	7SW-D/C46	Within Country Park
		<i>Aporosa dioica</i>	銀柴	5-8	143-200	4-8	2	M	A	A	A	L	b,c,h	No								
		<i>Cratoxylum cochinchinense</i>	黃牛木	5-6	180-200	3-4	2	M	A	A	A	L	b,c,h	No								
		<i>Ficus variegata</i>	青果榕	4-6	130-150	4-6	2	M	A	A	A	L	b,c,h	No								
		<i>Alangium chinense</i>	八角楓	7-10	150-300	5-6	7	M	A	A	A	L	b,c,h	No								
		<i>Microcos nervosa</i>	破布葉	7-8	155-200	4-5	3	M	A	A	A	L	b,c,h	No								
		<i>Schima superba</i>	木荷	9-10	150-300	4-5	16	M	A	A	A	L	b,c,h	No								
		<i>Acacia confusa</i>	台灣相思	8-10	120-500	8-10	3	M	A	A	A	L	b,c,h	No								
		<i>Mallotus paniculatus</i>	白楸	5-7	128-150	4-5	2	M	A	A	A	L	b,c,h	No								
		<i>Ficus variegata</i>	青果榕	8	250	5	1	M	A	A	A	L	b,c,h	No								
		<i>Macaranga tanarius var. tomentosa</i>	血桐	5-7	165-200	4-5	1	M	A	A	A	L	b,c,h	No								
		<i>Machilus chekiangensis</i>	浙江潤楠	10	300	8	1	M	A	A	A	L	b,c,h	No								
		<i>Melia azedarach</i>	楝	10-12	300-380	6-7	2	M	A	A	A	L	b,c,h	No								
		<i>Bombax ceiba</i>	木棉	8-10	200-350	5-6	4	M	A	A	A	L	b,c,h	No								
		<i>Syzygium jambos</i>	蒲桃	10	170	5	1	M	A	A	A	L	b,c,h	No								
		<i>Eucalyptus tereticornis</i>	細葉桉	12	300	5	1	M	A	A	A	L	b,c,h	No								
		<i>Lophostemon confertus</i>	紅膠木	8-10	270-350	6-7	2	M	A	A	A	L	b,c,h	No								
<i>Tetradium glabrifolium</i>	棟葉吳茱萸	8	200	4	1	M	A	A	A	L	b,c,h	No										
						sub-total	55															

Tree Group No.	Photo No.	Scientific Name	Chinese Name	Measurements			App. Quantity of the group	Amenity Value (high(H)/medium(M)/low(L))	Form (good(G)/average(A)/poor(P))	Health (good(G)/average(A)/poor(P))	Structural condition (good(G)/average(A)/poor(P))	Suitability for Transplanting		Conservation Status	Recommendation (Retain/Affected)			Justification	Maintenance department to provide comments on TPRP		Slope Feature No.	Additional Remarks
				Height (m)	DBH (mm)	Crown spread (m)						(high(H)/medium(M)/low(L))	Remarks		Retain %	Retain	Affected		Before	After		
GP17	GP17_V1, GP17_V2	<i>Ficus virens</i>	黃葛樹	8-10	320-350	5-6	2	M	A	A	A	L	b,c,h	No	52%Retain	200	181	Conflict with works	AFCD & HyD	AFCD & HyD	7SW-D/C410 7SW-D/C403 7SW-D/F39 7SW-D/FR468	Within Country Park
		<i>Eucalyptus robusta</i>	大葉桉	6-8	160-270	3-5	6	M	A	A	A	L	b,c,h	No								
		<i>Schima superba</i>	木荷	7-10	100-400	5-7	160	M	A	A	A	L	b,c,h	No								
		<i>Lophostemon confertus</i>	紅膠木	7-10	170-450	5-6	43	M	A	A	A	L	b,c,h	No								
		<i>Sterculia lanceolata</i>	假蘋婆	7-8	100-200	5-6	20	M	A	A	A	L	b,c,h	No								
		<i>Schefflera heptaphylla</i>	鵝掌柴	5-7	100-150	4-5	15	M	A	A	A	L	b,c,h	No								
		<i>Acacia confusa</i>	台灣相思	8-10	200-450	5-7	61	M	A	A	A	L	b,c,h	No								
		<i>Celtis sinensis</i>	朴樹	7-9	180-250	5-6	9	M	A	A	A	L	b,c,h	No								
		<i>Bombax ceiba</i>	木棉	7-9	160-380	5-6	8	M	A	A	A	L	b,c,h	No								
		<i>Ficus hispida</i>	對葉榕	4-8	130-250	4-5	7	M	A	A	A	L	b,c,h	No								
		<i>Alangium chinense</i>	八角楓	6-8	115-270	3-5	6	M	A	A	A	L	b,c,h	No								
		<i>Casuarina equisetifolia</i>	木麻黃	7-10	300-400	5-6	15	M	A	A	A	L	b,c,h	No								
		<i>Acacia mangium</i>	大葉相思	8-10	300-400	5-7	8	M	A	A	A	L	b,c,h	No								
		<i>Syzygium levinei</i>	山蒲桃	6-8	140-180	3-5	5	M	A	A	A	L	b,c,h	No								
<i>Aporosa dioica</i>	銀柴	4-7	158-200	3-5	11	M	A	A	A	L	b,c,h	No										
<i>Castanopsis fissa</i>	藥蒴錐	7-8	200-300	4-6	5	M	A	A	A	L	b,c,h	No										
					sub-total	381																
GP18	GP18_V1, GP18_V2	<i>Dimocarpus longan</i>	龍眼	8	300	8	1	M	A	A	A	L	b,c,h	No	100%Retain	101	6	NIL	AFCD & HyD	AFCD & HyD	7SW-D/C409 7SW-D/C565 7SW-D/C567	Within Country Park
		<i>Celtis timorensis</i>	樟葉朴	6-8	120-280	2-8	6	M	A	A	A	L	b,c,h	No								
		<i>Acacia confusa</i>	台灣相思	5-12	150-550	4-12	22	M	A	A	A	L	b,c,h	No								
		<i>Alangium chinense</i>	八角楓	7-10	100-250	4-6	17	M	A	A	A	L	b,c,h	No								
		<i>Macaranga tanarius var. tomentosa</i>	血桐	3-8	100-250	2-8	3	M	A	A	A	L	b,c,h	No								
		<i>Mallotus paniculatus</i>	白楸	6-10	120-200	4-6	14	M	A	A	A	L	b,c,h	No								
		<i>Schima superba</i>	木荷	7-12	120-300	5-7	2	M	A	A	A	L	b,c,h	No								
		<i>Schefflera heptaphylla</i>	鵝掌柴	6-8	120-300	2-5	10	M	A	A	A	L	b,c,h	No								
		<i>Celtis sinensis</i>	朴樹	7-9	200-450	4-8	6	M	A	A	A	L	b,c,h	No								
		<i>Sterculia lanceolata</i>	假蘋婆	6-9	130-300	4-7	4	M	A	A	A	L	b,c,h	No								
		<i>Cratoxylum cochinchinense</i>	黃牛木	8	150	5	1	M	A	A	A	L	b,c,h	No								
		<i>Ficus hispida</i>	對葉榕	6-7	110-160	4-6	5	M	A	A	A	L	b,c,h	No								
		<i>Bridelia tomentosa</i>	土蜜樹	5	150	5	1	M	A	A	A	L	b,c,h	No								
		<i>Michelia x alba</i>	白蘭	7-15	250-450	5-8	4	M	A	A	A	L	b,c,h	No								
		<i>Chukrasia tabularis</i>	麻棟	9-10	300-400	5-6	2	M	A	A	A	L	b,c,h	No								
		<i>Cinnamomum camphora</i>	樟樹	4-12	100-450	2-9	4	M	A	A	A	L	b,c,h	No								
<i>Bombax ceiba</i>	木棉	8	210	1	1	L	P	A	A	L	b,c,h	No										
<i>Archontophoenix alexandrae</i>	假欖榔	7-9	100-160	2-4	4	M	A	A	A	L	b,c,h	No										
					sub-total	107																
GP19	GP19_V1, GP19_V2	<i>Acacia mangium</i>	大葉相思	9-10	200-300	4-5	10	M	A	A	A	L	b,c,h	No	0%Retain	0	33	Conflict with works	HyD	HyD	7SW-D/F195	Within Country Park
		<i>Acacia confusa</i>	台灣相思	5-8	120-300	6-7	2	M	A	A	A	L	b,c,h	No								
		<i>Casuarina equisetifolia</i>	木麻黃	8-12	120-200	2-4	9	M	A	A	A	L	b,c,h	No								
		<i>Corymbia torelliana</i>	毛葉桉	10-14	120-250	4-5	11	M	A	A	A	L	b,c,h	No								
		<i>Leucaena leucocephala</i>	銀合歡	8	180	2	1	L	P	A	A	L	b,c,h	No								
					sub-total	33																
GP20	GP20_V1, GP20_V2	<i>Acacia confusa</i>	台灣相思	7-10	100-200	5-7	122	M	A	A	A	L	b,c,h	No	100%Retain	203	0	NIL	AFCD & HyD	AFCD & HyD	7SW-D/C5	Within Country Park
		<i>Sapium sebiferum</i>	烏桕	8	120	4	1	M	A	A	A	L	b,c,h	No								
		<i>Schima superba</i>	木荷	6-10	100-160	4-5	18	M	A	A	A	L	b,c,h	No								
		<i>Eucalyptus robusta</i>	大葉桉	6-8	100-300	4-5	31	M	A	A	A	L	b,c,h	No								
		<i>Eucalyptus tereticornis</i>	細葉桉	9-12	150-250	5-7	27	M	A	A	A	L	b,c,h	No								
		<i>Claoxylon indicum</i>	白桐樹	7-8	100-160	4-6	4	M	A	A	A	L	b,c,h	No								
					sub-total	203																

Tree Group No.	Photo No.	Scientific Name	Chinese Name	Measurements			App. Quantity of the group	Amenity Value (high(H)/medium(M)/low(L))	Form (good(G)/average(A)/poor(P))	Health (good(G)/average(A)/poor(P))	Structural condition (good(G)/average(A)/poor(P))	Suitability for Transplanting		Conservation Status	Recommendation (Retain/Affected)			Justification	Maintenance department to provide comments on TPRP		Slope Feature No.	Additional Remarks
				Height (m)	DBH (mm)	Crown spread (m)						(high(H)/medium(M)/low(L))	Remarks		Retain %	Retain	Affected		Before	After		
GP21	GP21_V1, GP21_V2	<i>Celtis sinensis</i>	朴樹	7-8	280-300	5-6	2	M	A	A	A	L	b,c,h	No	88%Retain	44	6	Conflict with works	AFCD & HyD	AFCD & HyD	7SW-D/FR37 7SW-D/C4 7SW-D/C3	-
		<i>Bombax ceiba</i>	木棉	10	400	5	1	M	A	A	A	L	b,c,h	No								
		<i>Melia azedarach</i>	楝	6-8	278-350	4-6	2	M	A	A	A	L	b,c,h	No								
		<i>Acacia confusa</i>	台灣相思	7-10	100-200	5-7	42	M	A	A	A	L	b,c,h	No								
		<i>Syzygium jambos</i>	蒲桃	7	150	5	1	M	A	A	A	L	b,c,h	No								
		<i>Alangium chinense</i>	八角楓	7	180	4	1	M	A	A	A	L	b,c,h	No								
		<i>Eucalyptus tereticornis</i>	細葉桉	10	300	5	1	M	A	A	A	L	b,c,h	No								
						sub-total	50															
GP22	GP22_V1, GP22_V2	<i>Acacia confusa</i>	台灣相思	7-10	100-200	5-7	105	M	A	A	A	L	b,c,h	No	100%Retain	115	0	NIL	HyD	HyD	7SW-D/C3	-
		<i>Macaranga tanarius var. tomentosa</i>	血桐	6-7	120-180	4-5	5	M	A	A	A	L	b,c,h	No								
		<i>Mallotus paniculatus</i>	白楸	6-7	120-180	4-5	5	M	A	A	A	L	b,c,h	No								
						sub-total	115															
GP23	GP23_V1, GP23_V2	<i>Ficus variegata</i>	青果榕	7-10	220-280	5-7	9	M	A	A	A	L	b,c,h	No	69%Retain	37	17	Conflict with works	HyD	HyD	7SW-D/C3 7SW-D/C2 7SW-D/C229 7SW-D/CR935 7SW-D/C479 7SW-D/C223	-
		<i>Cinnamomum camphora</i>	樟樹	8-10	200-450	5-8	15	M	A	A	A	L	b,c,h	No								
		<i>Lophostemon confertus</i>	紅膠木	7-9	250-300	5-6	3	M	A	A	A	L	b,c,h	No								
		<i>Alangium chinense</i>	八角楓	6-9	160-180	5-6	3	M	A	A	A	L	b,c,h	No								
		<i>Mallotus paniculatus</i>	白楸	6	148	4	1	M	A	A	A	L	b,c,h	No								
		<i>Ficus virens</i>	黃葛樹	7	220	5	1	M	A	A	A	L	b,c,h	No								
		<i>Ficus hispida</i>	對葉榕	7-9	100-200	5-7	7	M	A	A	A	L	b,c,h	No								
		<i>Adenanthera microsperma</i>	海紅豆	7-9	250-300	5-6	2	M	A	A	A	L	b,c,h	No								
		<i>Sterculia lanceolata</i>	假蘋婆	6-7	200-220	5-6	2	M	A	A	A	L	b,c,h	No								
		<i>Senna siamea</i>	鐵刀木	8-10	270-300	5-7	6	M	A	A	A	L	b,c,h	No								
		<i>Ficus microcarpa</i>	細葉榕	7-8	220-250	5-6	2	M	A	A	A	L	b,c,h	No								
		<i>Acacia confusa</i>	台灣相思	10	400	7	1	M	A	A	A	L	b,c,h	No								
		<i>Casuarina equisetifolia</i>	木麻黃	7-9	150-220	5-6	2	M	A	A	A	L	b,c,h	No								
						sub-total	54															
GP24	GP24_V1, GP24_V2	<i>Mallotus paniculatus</i>	白楸	4-6	120-220	6	6	M	A	A	A	L	b,c,h	No	16%Retain	27	140	Conflict with works	AFCD & HyD	AFCD & HyD	7SW-D/C227 7SW-D/C655 7SW-D/F45 7SW-D/FR46 7SW-D/F47	-
		<i>Leucaena leucocephala</i>	銀合歡	8-9	140-250	5-6	28	M	A	A	A	L	b,c,h	No								
		<i>Bombax ceiba</i>	木棉	10-12	350-550	8-10	6	M	A	A	A	L	b,c,h	No								
		<i>Ficus religiosa</i>	菩提樹	8	120	4	1	M	A	A	A	L	b,c,h	No								
		<i>Macaranga tanarius var. tomentosa</i>	血桐	4-5	180-220	4-6	15	M	A	A	A	L	b,c,h	No								
		<i>Ficus hispida</i>	對葉榕	2-8	120-200	4-5	6	M	A	A	A	L	b,c,h	No								
		<i>Ficus variegata</i>	青果榕	6-12	100-400	4-9	14	M	A	A	A	L	b,c,h	No								
		<i>Cinnamomum camphora</i>	樟樹	6-10	300-500	5-10	8	M	A	A	A	L	b,c,h	No								
		<i>Syzygium jambos</i>	蒲桃	5-6	100-220	4-5	6	M	A	A	A	L	b,c,h	No								
		<i>Lophostemon confertus</i>	紅膠木	4-6	127-270	3-5	2	M	A	A	A	L	b,c,h	No								
		<i>Diospyros morrisiana</i>	羅浮柿	8	250	6	1	M	A	A	A	L	b,c,h	No								
		<i>Peltophorum pterocarpum</i>	盾柱木	10-12	350-400	10-12	6	M	A	A	A	L	b,c,h	No								
		<i>Schima superba</i>	木荷	7-12	300-800	5-10	21	M	A	A	A	L	b,c,h	No								
		<i>Alangium chinense</i>	八角楓	8-9	140-350	4-5	8	M	A	A	A	L	b,c,h	No								
		<i>Celtis timorensis</i>	樟葉朴	8	300	8	1	M	A	A	A	L	b,c,h	No								
		<i>Microcos nervosa</i>	破布葉	5-8	140-160	4-5	5	M	A	A	A	L	b,c,h	No								
		<i>Sterculia lanceolata</i>	假蘋婆	8	300	6	1	M	A	A	A	L	b,c,h	No								
		<i>Albizia lebbek</i>	大葉合歡	8	270	6	1	M	A	A	A	L	b,c,h	No								
		<i>Schefflera heptaphylla</i>	鵝掌柴	7-8	250-270	5-6	8	M	A	A	A	L	b,c,h	No								
		<i>Machilus breviflora</i>	短序潤楠	8-16	200-600	6-12	22	M	A	A	A	L	b,c,h	No								
<i>Liquidambar formosana</i>	楓香	10	220	6	1	M	A	A	A	L	b,c,h	No										
						sub-total	167															

Tree Group No.	Photo No.	Scientific Name	Chinese Name	Measurements			App. Quantity of the group	Amenity Value (high(H)/medium(M)/low(L))	Form (good(G)/average(A)/poor(P))	Health (good(G)/average(A)/poor(P))	Structural condition (good(G)/average(A)/poor(P))	Suitability for Transplanting		Conservation Status	Recommendation (Retain/Affected)			Justification	Maintenance department to provide comments on TPRP		Slope Feature No.	Additional Remarks
				Height (m)	DBH (mm)	Crown spread (m)						(high(H)/medium(M)/low(L))	Remarks		Retain %	Retain	Affected		Before	After		
GP25	GP25_V1	<i>Acacia confusa</i>	台灣相思	8-10	200-300	5-7	30	M	A	A	A	L	b,c,h	No	21%Retain	24	88	Conflict with works	AFCD & HyD	AFCD & HyD	7SWD/C568	-
		<i>Bauhinia sp.</i>	羊蹄甲屬	6-10	150-250	4-6	21	M	A	A	A	L	b,c,h	No								
		<i>Albizia lebbbeck</i>	大葉合歡	8	160	5	1	M	A	A	A	L	b,c,h	No								
		<i>Bombax ceiba</i>	木棉	8-10	200-350	4-6	12	M	A	A	A	L	b,c,h	No								
		<i>Castanopsis fissa</i>	鷺朥維	9-10	180-350	6-7	3	M	A	A	A	L	b,c,h	No								
		<i>Lophostemon confertus</i>	紅膠木	8-10	350-500	6-7	22	M	A	A	A	L	b,c,h	No								
		<i>Leucaena leucocephala</i>	銀合歡	7-9	150-300	4-5	6	M	A	A	A	L	b,c,h	No								
		<i>Cinnamomum camphora</i>	樟樹	8-10	250-350	8-10	3	M	A	A	A	L	b,c,h	No								
		<i>Vernicia montana</i>	木油樹	7	200	4	1	M	A	A	A	L	b,c,h	No								
		<i>Celtis sinensis</i>	朴樹	8	200	6	1	M	A	A	A	L	b,c,h	No								
		<i>Macaranga tanarius var. tomentosa</i>	血桐	4-6	100-110	3-4	3	M	A	A	A	L	b,c,h	No								
		<i>Eucalyptus robusta</i>	大葉桉	9-10	175-300	6-7	5	M	A	A	A	L	b,c,h	No								
		<i>Ficus hispida</i>	對葉榕	7-8	120-130	4-5	3	M	A	A	A	L	b,c,h	No								
		<i>Casuarina equisetifolia</i>	木麻黃	7	120	4	1	M	A	A	A	L	b,c,h	No								
					sub-total	112																
GP28	GP28_V1, GP28_V2	<i>Acacia confusa</i>	台灣相思	7-11	100-400	5-9	95	M	A	A	A	L	b,c,h	No	54%Retain	105	88	Conflict with works	HyD	HyD	7SW-D/C1 7SEC/F130 7SE-C/C218	-
		<i>Ficus hispida</i>	對葉榕	5-7	121-150	3-4	5	M	A	A	A	L	b,c,h	No								
		<i>Mallotus paniculatus</i>	白楸	5-7	150-220	4-5	10	M	A	A	A	L	b,c,h	No								
		<i>Cratoxylum cochinchinense</i>	黃牛木	6-8	150-300	4-6	8	M	A	A	A	L	b,c,h	No								
		<i>Casuarina equisetifolia</i>	木麻黃	7-9	200-250	5-6	6	M	A	A	A	L	b,c,h	No								
		<i>Bauhinia variegata</i>	宮粉羊蹄甲	4	125	3	1	M	A	A	A	L	b,c,h	No								
		<i>Ficus microcarpa</i>	細葉榕	8	300	8	1	M	A	A	A	L	b,c,h	No								
		<i>Schefflera heptaphylla</i>	鵝掌柴	6-8	120-200	4-5	12	M	A	A	A	L	b,c,h	No								
		<i>Macaranga tanarius var. tomentosa</i>	血桐	6-8	147-200	6-8	15	M	A	A	A	L	b,c,h	No								
		<i>Cinnamomum camphora</i>	樟樹	6-10	150-300	5-9	8	M	A	A	A	L	b,c,h	No								
		<i>Celtis sinensis</i>	朴樹	6-8	150-350	5-8	5	M	A	A	A	L	b,c,h	No								
		<i>Schima superba</i>	木荷	6-8	100-200	5-7	3	M	A	A	A	L	b,c,h	No								
		<i>Leucaena leucocephala</i>	銀合歡	6-8	120-150	4-5	20	M	A	A	A	L	b,c,h	No								
		<i>Celtis timorensis</i>	樟葉朴	8	250	5	1	M	A	A	A	L	b,c,h	No								
<i>Sapium discolor</i>	山烏桕	7-8	160-190	4-6	3	M	A	A	A	L	b,c,h	No										
					sub-total	193																
GP36	GP36_V1, GP36_V2	<i>Schima superba</i>	木荷	10-12	300-500	7-8	10	M	A	A	A	L	b,c,h	No	51%Retain	133	128	Conflict with works	HyD & LCSD	HyD & LCSD	7SW-D/FR445 7SW-D/C468 7SW-D/C482 7SW-D/FR211 7SW-D/C469 7SW-D/CR102	-
		<i>Cratoxylum cochinchinense</i>	黃牛木	7	120	5	1	M	A	A	A	L	b,c,h	No								
		<i>Macaranga tanarius var. tomentosa</i>	血桐	7-9	120-300	5-6	10	M	A	A	A	L	b,c,h	No								
		<i>Cinnamomum camphora</i>	樟樹	7-10	300-800	7-10	2	M	A	A	A	L	b,c,h	No								
		<i>Machilus breviflora</i>	短序潤楠	7-10	300-400	5-6	10	M	A	A	A	L	b,c,h	No								
		<i>Leucaena leucocephala</i>	銀合歡	8-10	160-250	5-7	10	M	A	A	A	L	b,c,h	No								
		<i>Casuarina equisetifolia</i>	木麻黃	5-10	200-270	4-6	23	M	A	A	A	L	b,c,h	No								
		<i>Acacia confusa</i>	台灣相思	7-10	150-600	5-7	102	M	A	A	A	L	b,c,h	No								
		<i>Eucalyptus robusta</i>	大葉桉	7-10	200-350	1-7	19	M	A	A	A	L	b,c,h	No								
		<i>Celtis sinensis</i>	朴樹	6-8	120-350	5-6	17	M	A	A	A	L	b,c,h	No								
		<i>Bauhinia variegata</i>	宮粉羊蹄甲	5-7	120-150	5-6	15	M	A	A	A	L	b,c,h	No								
		<i>Sapium sebiferum</i>	烏桕	7-8	180-280	4-5	4	M	A	A	A	L	b,c,h	No								
		<i>Schefflera heptaphylla</i>	鵝掌柴	6-8	170-250	5-6	10	M	A	A	A	L	b,c,h	No								
		<i>Litsea glutinosa</i>	潺槁樹	4-6	120-160	5-6	2	M	A	A	A	L	b,c,h	No								
		<i>Zanthoxylum avicennae</i>	勳欖花椒	3	150	3	1	M	A	A	A	L	b,c,h	No								
		<i>Bauhinia sp.</i>	羊蹄甲屬	6-7	120-180	4-6	3	M	A	A	A	L	b,c,h	No								
		<i>Bauhinia x blakeana</i>	洋紫荊	7	177	5	1	M	A	A	A	L	b,c,h	No								
		<i>Archontophoenix alexandrae</i>	假檳榔	8	100-150	2	6	M	A	A	A	L	b,c,h	No								
<i>Aleurites moluccana</i>	石栗	8	180	5	1	M	A	A	A	L	b,c,h	No										
<i>Ficus hispida</i>	對葉榕	6	150	4	1	M	A	A	A	L	b,c,h	No										

	Tree Group No.	Photo No.	Scientific Name	Chinese Name	Measurements			App. Quantity of the group	Amenity Value (high(H)/medium(M)/low(L))	Form (good(G)/average(A)/poor(P))	Health (good(G)/average(A)/poor(P))	Structural condition (good(G)/average(A)/poor(P))	Suitability for Transplanting		Conservation Status	Recommendation (Retain/Affected)			Justification	Maintenance department to provide comments on TPRP		Slope Feature No.	Additional Remarks
					Height (m)	DBH (mm)	Crown spread (m)						(high(H)/medium(M)/low(L))	Remarks		Retain %	Retain	Affected		Before	After		
			<i>Ficus microcarpa</i>	細葉榕	10	450	10	1	M	A	A	A	L	b,c,h	No								
			<i>Alangium chinense</i>	八角楓	7	118	4	1	M	A	A	A	L	b,c,h	No								
			<i>Sterculia lanceolata</i>	假蘋婆	5-7	120-160	4-5	7	M	A	A	A	L	b,c,h	No								
			<i>Mallotus paniculatus</i>	白楸	5-6	140-180	4-5	4	M	A	A	A	L	b,c,h	No								
							sub-total	261															

Tree Group No.	Photo No.	Scientific Name	Chinese Name	Measurements			App. Quantity of the group	Amenity Value (high(H)/medium(M)/low(L))	Form (good(G)/average(A)/poor(P))	Health (good(G)/average(A)/poor(P))	Structural condition (good(G)/average(A)/poor(P))	Suitability for Transplanting		Conservation Status	Recommendation (Retain/Affected)			Justification	Maintenance department to provide comments on TPRP		Slope Feature No.	Additional Remarks
				Height (m)	DBH (mm)	Crown spread (m)						(high(H)/medium(M)/low(L))	Remarks		Retain %	Retain	Affected		Before	After		
GP37	GP37_V1	<i>Lophostemon confertus</i>	紅膠木	9-13	150-400	4-7	6	M	A	A	A	L	b,c,h	No	83%Retain	48	10	Conflict with works	AFCD & HyD	AFCD & HyD	7SW-D/F31 7SW-D/FR238	Within Country Park
		<i>Sterculia lanceolata</i>	假蒺藜	6	100	4	1	M	A	A	A	L	b,c,h	No								
		<i>Machilus chekiangensis</i>	浙江潤楠	10	300	6	1	M	A	A	A	L	b,c,h	No								
		<i>Ficus variegata</i>	青果榕	8	162	5	1	M	A	A	A	L	b,c,h	No								
		<i>Bombax ceiba</i>	木棉	10-17	400-600	6-8	3	M	A	A	A	L	b,c,h	No								
		<i>Mangifera indica</i>	芒果	8-9	200-250	5-6	2	M	A	A	A	L	b,c,h	No								
		<i>Artocarpus heterophyllus</i>	菠蘿蜜	8-10	150-280	4-5	4	M	A	A	A	L	b,c,h	No								
		<i>Clausena lansium</i>	黃皮	6-7	110-200	4-5	2	M	A	A	A	L	b,c,h	No								
		<i>Dimocarpus longan</i>	龍眼	7-8	234-250	4-5	3	M	A	A	A	L	b,c,h	No								
		<i>Ficus microcarpa</i>	細葉榕	10	300	10	1	M	A	A	A	L	b,c,h	No								
		<i>Mallotus paniculatus</i>	白楸	7-9	100-150	4-5	7	M	A	A	A	L	b,c,h	No								
		<i>Alangium chinense</i>	八角楓	6	170	4	1	M	A	A	A	L	b,c,h	No								
		<i>Eucalyptus robusta</i>	大葉桉	10-11	300-400	5-6	13	M	A	A	A	L	b,c,h	No								
		<i>Liquidambar formosana</i>	楓香	5-10	200-400	4-8	6	M	A	A	A	L	b,c,h	No								
<i>Macaranga tanarius var. tomentosa</i>	血桐	4-5	100-150	4-5	7	M	A	A	A	L	b,c,h	No										
					sub-total	58																
GP38	GP38_V1	<i>Acacia confusa</i>	台灣相思	4-13	100-400	3-10	43	M	A	A	A	L	b,c,h	No	63%Retain	51	30	Conflict with works	HyD	HyD	7SWD/F187 7SW-D/C415	-
		<i>Alangium chinense</i>	八角楓	6-9	150-250	4-5	9	M	A	A	A	L	b,c,h	No								
		<i>Macaranga tanarius var. tomentosa</i>	血桐	5-9	100-300	4-8	5	M	A	A	A	L	b,c,h	No								
		<i>Bauhinia sp.</i>	羊蹄甲屬	4-7	100-200	3-6	14	M	A	A	A	L	b,c,h	No								
		<i>Schefflera heptaphylla</i>	鵝掌柴	6-7	180-200	4-5	6	M	A	A	A	L	b,c,h	No								
		<i>Sterculia lanceolata</i>	假蒺藜	5-6	130-145	4-5	4	M	A	A	A	L	b,c,h	No								
					sub-total	81																
GP39	GP39_V1	<i>Bauhinia sp.</i>	羊蹄甲屬	5-7	100-250	4-5	5	M	A	A	A	L	b,c,h	No	0%Retain	0	21	Conflict with works	HyD & LCSD	HyD & LCSD	7SW-D/F188	-
		<i>Bombax ceiba</i>	木棉	10	250	5	1	M	A	A	A	L	b,c,h	No								
		<i>Albizia lebeck</i>	大葉合歡	9	150	7	1	M	A	A	A	L	b,c,h	No								
		<i>Ficus elastica</i>	印度橡樹	9	300	9	1	M	A	A	A	L	b,c,h	No								
		<i>Acacia confusa</i>	台灣相思	9-11	100-400	5-7	13	M	A	A	A	L	b,c,h	No								
					sub-total	21																
GP40	GP40_V1	<i>Peltophorum pterocarpum</i>	盾柱木	13	300	8	1	M	A	A	A	L	b,c	No	0%Retain	0	6	Conflict with works	HyD & LCSD	HyD & LCSD	7SW-D/F285	-
		<i>Schima superba</i>	木荷	11-12	280-300	5-7	2	M	A	A	A	L	b,c	No								
		<i>Bombax ceiba</i>	木棉	8	270	4	1	M	A	A	A	L	b,c	No								
		<i>Bauhinia sp.</i>	羊蹄甲屬	7-8	250-280	4-5	2	M	A	A	A	L	b,c	No								
					sub-total	6																

	Tree Group No.	Photo No.	Scientific Name	Chinese Name	Measurements			App. Quantity of the group	Amenity Value (high(H)/medium(M)/low(L))	Form (good(G)/average(A)/poor(P))	Health (good(G)/average(A)/poor(P))	Structural condition (good(G)/average(A)/poor(P))	Suitability for Transplanting		Conservation Status	Recommendation (Retain/Affected)			Justification	Maintenance department to provide comments on TPRP		Slope Feature No.	Additional Remarks
					Height (m)	DBH (mm)	Crown spread (m)						(high(H)/medium(M)/low(L))	Remarks		Retain %	Retain	Affected		Before	After		
	GP41	GP41_V1 GP41_V2	<i>Dimocarpus longan</i>	龍眼	6	205	4	1	M	A	A	A	L	b,c,h	No	45%Retain	35	43	Conflict with works	HyD & LCSD	HyD & LCSD	7SW-D/FR193 7SW-D/FR194	-
			<i>Ficus hispida</i>	對葉榕	5-6	100-200	4-5	6	M	A	A	A	L	b,c,h	No								
			<i>Macaranga tanarius var. tomentosa</i>	血桐	3-6	100-300	3-5	16	M	A	A	A	L	b,c,h	No								
			<i>Leucaena leucocephala</i>	銀合歡	5-7	100-200	4-5	9	M	A	A	A	L	b,c,h	No								
			<i>Mallotus paniculatus</i>	白楸	3-8	100-150	2-5	8	M	A	A	A	L	b,c,h	No								
			<i>Acacia confusa</i>	台灣相思	5-13	100-400	3-10	38	M	A	A	A	L	b,c,h	No								
						sub-total	78																
	GP42	GP42_V1	<i>Acacia confusa</i>	台灣相思	7-10	100-240	5-7	259	M	A	A	A	L	b,c,h	No	3%Retain	9	250	NIL	HyD	HyD	11NW-B/C136	-
						sub-total	259																
						total	4992											2082	2910				

Remarks for Suitability for Transplanting

- (a) Low amenity value;
- (b) Irrecoverable form after transplanting (e.g. transplanting requires substantial crown and root pruning);
- (c) Low chance of survival upon transplanting;
- (d) Very large size (unless the feasibility to transplant has been considered financially reasonable and technically feasible during the feasibility stage);
- (e) With evidence of over-maturity and onset of senescence;
- (f) With poor health, structure or form (e.g. imbalanced form, leaning, with major cavity/cracks/splits); or cavity/cracks/splits);
- (g) Undesirable species (e.g. *Leucaena leucocephala* which is an invasive exotic and self-seeding tree); or
- (h) Trees grown under poor conditions which have limited the formation of proper root ball necessary for transplanting (e.g. on steep slope)

Conservation Status

- (A) The Protection of Endangered Species of Animals and Plants Ordinance (Cap.586)
- (B) Forests and Countryside Ordinance (Cap. 96)
- (C) Rare and Precious Plants of Hong Kong
- (D) IUCN Red List of Threatened Species

Individual Tree Assessment Schedule

Tree No.	Photo No.	Scientific Name	Chinese Name	Measurements			Amenity Value (high(H)/ medium(M)/ low(L))	Form (good(G)/ average(A)/ poor(P))	Health (good(G)/ average(A)/ poor(P))	Structural condition (good(G)/ average(A)/ poor(P))	Suitability for Transplanting		Conservation Status	Recommendations (Retain/Affected)	Justification	Maintenance department to provide comments on TPRP		Slope Feature No.	Additional Remarks
				Height (m)	DBH (mm)	Crown spread (m)					(high(H)/ medium(M)/ low(L))	Remarks				Before	After		
T1	T1_V1-V4	<i>Ficus elastica</i>	印度橡樹	14	630	12	M	G	A	A	L	b, c, d, f, h	-	Affected	Conflict with works	LCSD	LCSD	-	good form with wide spreading crown, main trunk grown with a number of aerial roots; located in GP1 area
T2	T2	<i>Rhodoleia championii</i>	紅花荷	6	110	4	M	P	A	A	L	b, c, f, h	B, C	Retain	NIL	LCSD	LCSD	11NW-B/C633	crooked trunk; located in GP1 area
T3	T3	<i>Rhodoleia championii</i>	紅花荷	6	100	2	M	A	A	A	L	b, c, h	B, C	Retain	NIL	LCSD	LCSD	11NW-B/C633	located in GP1 area
T4	T4	<i>Rhodoleia championii</i>	紅花荷	6	100	4	M	A	A	A	L	b, c, h	B, C	Retain	NIL	LCSD	LCSD	11NW-B/C633	located in GP1 area
T5	T5	<i>Ailanthus fordii</i>	常綠臭椿	8	100	4	M	A	A	A	L	b, c, h	B, C	Retain	NIL	HyD	HyD	7SW-D/C409	located in GP18 area, within Country Park
T6	T6	<i>Ailanthus fordii</i>	常綠臭椿	12	120	5	M	A	A	A	L	b, c, h	B, C	Retain	NIL	HyD	HyD	7SW-D/C409	located in GP18 area, within Country Park
T7	T7	<i>Ailanthus fordii</i>	常綠臭椿	12	450	9	M	A	A	A	L	b, c, h	B, C	Retain	NIL	HyD	HyD	7SW-D/C409	located in GP18 area, within Country Park
T8	T8	<i>Ailanthus fordii</i>	常綠臭椿	14	220	4	M	A	A	A	L	b, c, h	B, C	Affected	Conflict with works	HyD	HyD	7SW-D/FR36	located in GP25 area
T9	T9	<i>Ailanthus fordii</i>	常綠臭椿	14	500	8	M	P	A	A	L	b, c, f, h	B, C	Affected	Conflict with works	HyD	HyD	7SW-D/FR46	codominant trunks; located in GP24 area
T10	T10	<i>Ailanthus fordii</i>	常綠臭椿	14	300	7	M	A	A	A	L	b, c, h	B, C	Affected	Conflict with works	HyD	HyD	7SW-D/FR46	located in GP24 area
T11	T11	<i>Ailanthus fordii</i>	常綠臭椿	10	180	4	M	A	A	A	L	b, c, h	B, C	Affected	Conflict with works	HyD	HyD	7SW-D/FR46	trunk wound; located in GP24 area
T12	T12	<i>Ailanthus fordii</i>	常綠臭椿	7	200	4	M	P	A	A	L	b, c, f, h	B, C	Affected	Conflict with works	HyD	HyD	7SW-D/FR46	codominant trunks; located in GP24 area
T13	T13	<i>Ailanthus fordii</i>	常綠臭椿	16	250	5	M	A	A	A	L	b, c, h	B, C	Affected	Conflict with works	HyD	HyD	7SW-D/FR47	located in GP24 area
T14	T14	<i>Ailanthus fordii</i>	常綠臭椿	12	130	3	M	A	A	A	L	b, c, h	B, C	Affected	Conflict with works	HyD	HyD	7SW-D/CR469	located in GP24 area
T15	T15	<i>Ailanthus fordii</i>	常綠臭椿	6	130	5	M	P	A	A	L	b, c, f, h	B, C	Affected	Conflict with works	HyD	HyD	7SW-D/FR211	imbalanced form; located in GP36 area
T16	T16	<i>Ficus microcarpa</i>	細葉榕	14	1000	14	M	A	A	A	L	b, c, d, h	DBH>1m	Retain	NIL	AFCD	AFCD	-	located in GP21 area
T17	T17	<i>Ailanthus fordii</i>	常綠臭椿	12	250	6	M	A	A	A	L	b, c, h	B, C	Affected	Conflict with works	HyD	HyD	7SW-D/C2	located in GP23 area
T18	T18	<i>Ailanthus fordii</i>	常綠臭椿	10	150	4	M	A	A	A	L	b, c, h	B, C	Affected	Conflict with works	HyD	HyD	7SW-D/C1	located in GP28 area
T19	T19	<i>Ailanthus fordii</i>	常綠臭椿	12	120	2	M	A	A	A	L	b, c, h	B, C	Affected	Conflict with works	HyD	HyD	7SW-D/C468	located in GP36 area
T54	T54	<i>Ailanthus fordii</i>	常綠臭椿	15	600	8	M	P	A	A	L	b, c, f, h	B, C	Retain	NIL	HyD	HyD	7SW-D/C229	codominant trunks; located in GP23 area
T55	T55	<i>Ailanthus fordii</i>	常綠臭椿	14	250	6	M	A	A	A	L	b, c, h	B, C	Retain	NIL	HyD	HyD	7SW-D/C229	located in GP23 area
T56	T56	<i>Ailanthus fordii</i>	常綠臭椿	15	500	8	M	P	A	A	L	b, c, f, h	B, C	Affected	Conflict with works	HyD	HyD	7SW-D/C229	codominant trunks; located in GP23 area
T57	T57	<i>Ailanthus fordii</i>	常綠臭椿	11	150	4	M	A	A	A	L	b, c, h	B, C	Retain	NIL	HyD	HyD	7SW-D/C229	located in GP23 area
T58	T58	<i>Ailanthus fordii</i>	常綠臭椿	14	400	5	M	A	A	A	L	b, c, h	B, C	Affected	Conflict with works	HyD	HyD	7SW-D/FR46	located in GP24 area
T60	T60	<i>Ailanthus fordii</i>	常綠臭椿	10	130	5	M	A	A	A	L	b, c, h	B, C	Affected	Conflict with works	HyD	HyD	7SW-D/F187	located in GP38 area
T61	T61	<i>Canthium dicoccum</i>	魚骨木	9	220	3	M	A	A	A	L	b, c, h	D	Retain	NIL	HyD	HyD	7SW-D/C567	located in GP19 area

Remarks for Suitability for Transplanting

- (a) Low amenity value;
- (b) Irrecoverable form after transplanting (e.g. transplanting requires substantial crown and root pruning);
- (c) Low chance of survival upon transplanting;
- (d) Very large size (unless the feasibility to transplant has been considered financially reasonable and technically feasible during the feasibility stage);
- (e) With evidence of over-maturity and onset of senescence;
- (f) With poor health, structure or form (e.g. imbalanced form, leaning, with major cavity/cracks/splits); or cavity/cracks/splits;
- (g) Undesirable species (e.g. *Leucaena leucocephala* which is an invasive exotic and self-seeding tree); or
- (h) Trees grown under poor conditions which have limited the formation of proper root ball necessary for transplanting (e.g. on steep slope)

Conservation Status

- (A) The Protection of Endangered Species of Animals and Plants Ordinance (Cap.586)
- (B) Forests and Countryside Ordinance (Cap. 96)
- (C) Rare and Precious Plants of Hong Kong
- (D) IUCN Red List of Threatened Species

Tree Group Photos



GP1_V1



GP1_V2



GP2_V1



GP2_V2



GP3_V1



GP3_V2



GP4_V1



GP4_V2



GP5_V1



GP5_V2



GP6_V1



GP7_V1



GP7_V2



GP8_V1



GP8_V2



GP10_V1



GP11_V1



GP12_V1



GP12_V2



GP13_V1



GP14_V1



GP15_V1



GP16_V1



GP16_V2



GP17_V1



GP17_V2



GP18_V1



GP18_V2



GP19_V1



GP19_V2



GP20_V1



GP20_V2



GP21_V1



GP21_V2



GP22_V1



GP22_V2



GP23_V1



GP23_V2



GP24_V1



GP24_V2



GP25_V1



GP28_V1



GP28_V2



GP36_V1



GP36_V2



GP37_V1



GP38_V1



GP39_V1



GP40_V1



GP41_V1



GP41_V2



GP42_V1

Individual Tree Photos



T1_V1 *Ficus elastica* (Affected)



T1_V2 *Ficus elastica* (Affected)



T1_V3 *Ficus elastica* (Affected)



T1_V4 *Ficus elastica* (Affected)



T2 *Rhodoleia championii* (Retain)



T3 *Rhodoleia championii* (Retain)



T4 *Rhodoleia championii* (Retain)



T5 *Ailanthus fordii* (Retain)



T6 *Ailanthus fordii* (Retain)



T7 *Ailanthus fordii* (Retain)



T8(1) *Ailanthus fordii* (Affected)



T8(2) *Ailanthus fordii* (Affected)



T8(3) *Ailanthus fordii* (Affected)



T9 *Ailanthus fordii* (Affected)



T10 *Ailanthus fordii* (Affected)



T11 *Ailanthus fordii* (Affected)



T12 *Ailanthus fordii* (Affected)



T13(1) *Ailanthus fordii* (Affected)



T13(2) *Ailanthus fordii* (Affected)



T14(1) *Ailanthus fordii* (Affected)



T14(2) *Ailanthus fordii* (Affected)



T15 *Ailanthus fordii* (Affected)



T16 *Ficus microcarpa* (Retain)



T17(1) *Ailanthus fordii* (Affected)



T17(2) Ailanthus fordii (Affected)



T17(3) Ailanthus fordii (Affected)



T18 Ailanthus fordii (Affected)



T19 Ailanthus fordii (Affected)



T54 (1) Ailanthus fordii (Retain)



T54 (2) Ailanthus fordii (Retain)



T55 (1) Ailanthus fordii (Retain)



T55 (2) Ailanthus fordii (Retain)



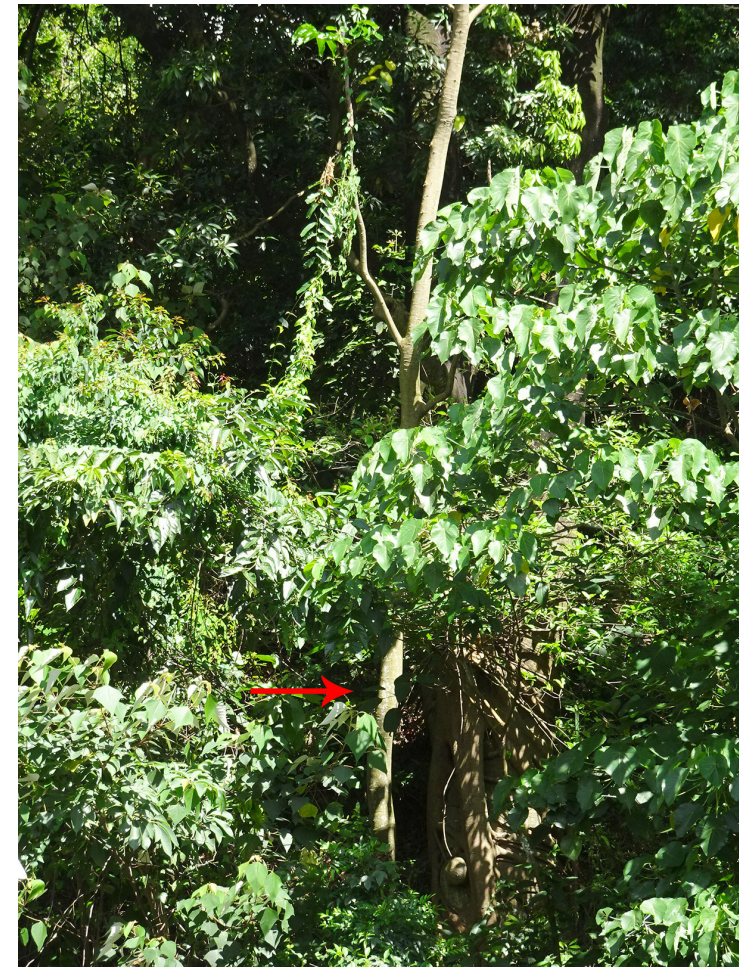
T56 (1) *Ailanthus fordii* (Affected)



T56 (2) *Ailanthus fordii* (Affected)



T57 (1) *Ailanthus fordii* (Retain)



T57 (2) *Ailanthus fordii* (Retain)



T58 (1) *Ailanthus fordii* (Affected)



T58 (2) *Ailanthus fordii* (Affected)



T60 *Ailanthus fordii* (Affected)



T61 *Canthium dicoccum* (Retain)