

Indicative location of off-site woodland compensation

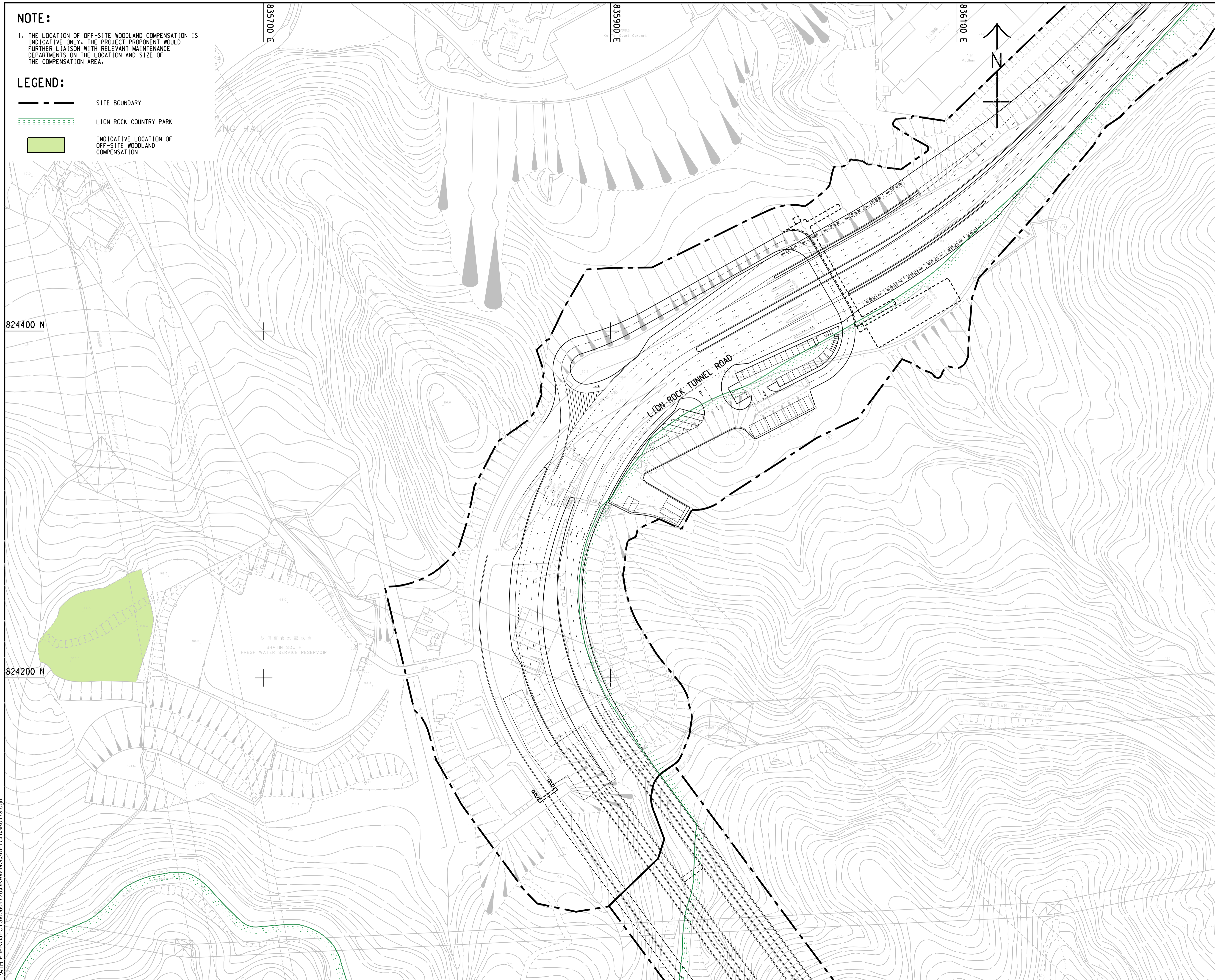
ISO A1 594mm x 841mm
 Approved:
 Checked:
 Designer:
 Project Management Initials:
 2022/1/29
 PATH PROJECT 150604728/DRAWINGS/KEY PLAN/SK0178.dgn

NOTE:

1. THE LOCATION OF OFF-SITE WOODLAND COMPENSATION IS INDICATIVE ONLY. THE PROJECT PROPONENT WOULD FURTHER LIAISON WITH RELEVANT MAINTENANCE DEPARTMENTS ON THE LOCATION AND SIZE OF THE COMPENSATION AREA.

LEGEND:

- SITE BOUNDARY
- LION ROCK COUNTRY PARK
- INDICATIVE LOCATION OF OFF-SITE WOODLAND COMPENSATION



PROJECT
项目

IMPROVEMENT OF LION ROCK TUNNEL - INVESTIGATION

CLIENT
客户



CONSULTANT
顾问

AECOM Asia Company Ltd.
www.aecom.com

SUB-CONSULTANTS
分包工程顾问公司

ISSUE/REVISION
修订

I/R 修订	DATE 日期	DESCRIPTION 内容描述	CHK. 核阅

STATUS
状态

SCALE
比例

A3 1 : 2000

DIMENSION UNIT
尺寸单位

METRES

KEY PLAN
索引图

PROJECT NO.
项目编号

60604728

AGREEMENT NO.
协议编号

CE 48/2018(HY)

SHEET TITLE
图名

INDICATIVE LOCATION OF OFF-SITE WOODLAND COMPENSATION

SHEET NUMBER
图号

60604728/SK0179

This drawing has been prepared for the use of AECOM's client. It may not be used, modified, reproduced or relied upon by third parties, except as agreed by AECOM or as required by law. AECOM accepts no responsibility, and denies any liability whatsoever, to any party that uses or relies on this drawing without AECOM's express written consent. All measurements must be obtained from the stated dimensions.