

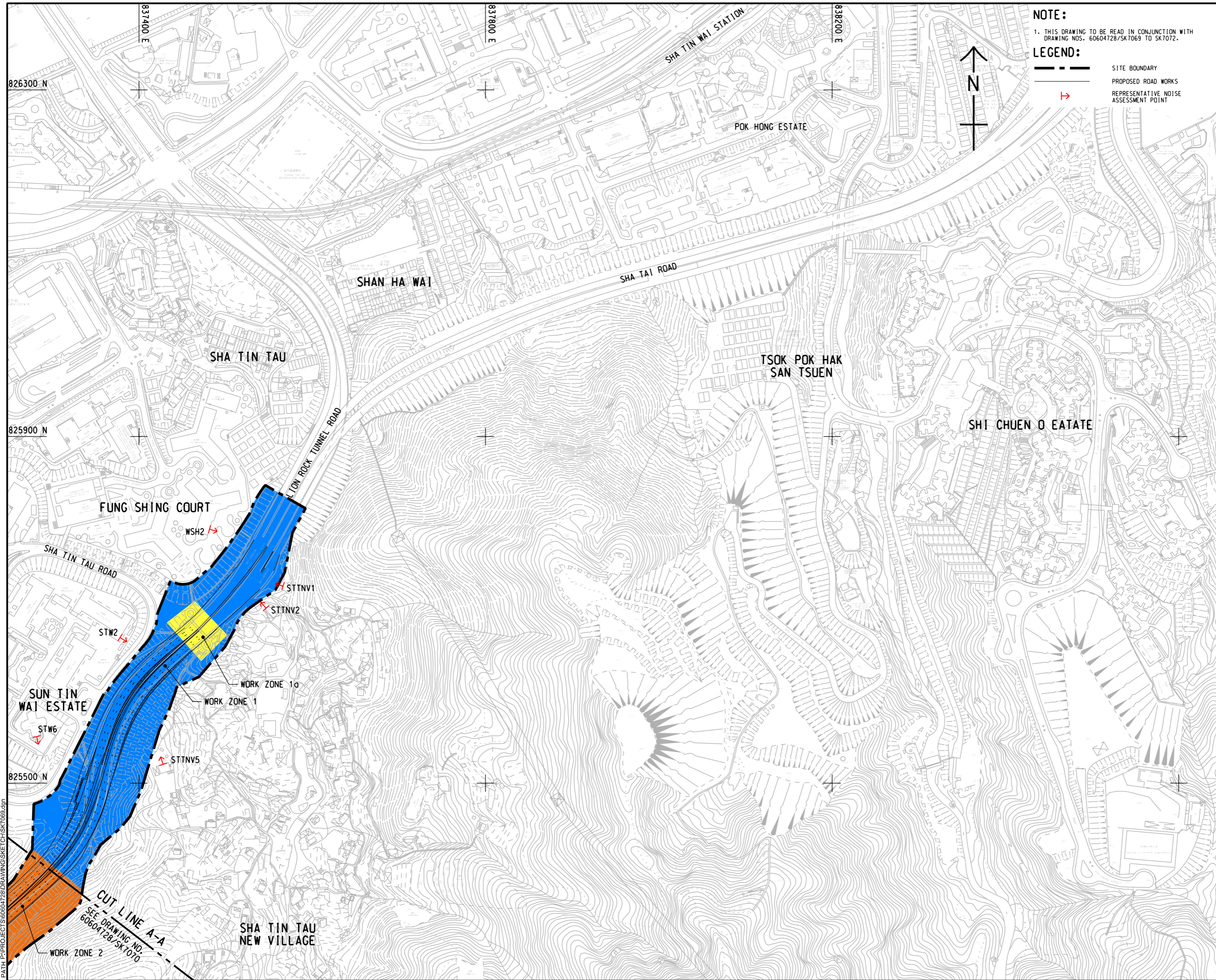








ISO A1 594mm x 841mm  
 Approved:  
 Checked:  
 Designer:  
 Project Management Initials:



**NOTE:**  
 1. THIS DRAWING TO BE READ IN CONJUNCTION WITH DRAWING NOS. 60604728/SK7069 TO SK7072.

**LEGEND:**  
 - - - - - SITE BOUNDARY  
 - - - - - PROPOSED ROAD WORKS  
 - - - - - REPRESENTATIVE NOISE ASSESSMENT POINT

**AECOM**

PROJECT  
**IMPROVEMENT OF LION ROCK TUNNEL - INVESTIGATION**

CLIENT  
**路政署  
 HIGHWAYS DEPARTMENT**

CONSULTANT  
 AECOM Asia Company Ltd.  
 www.aecom.com

SUB-CONSULTANTS  
 分判工程顧問公司

**ISSUE/REVISION**

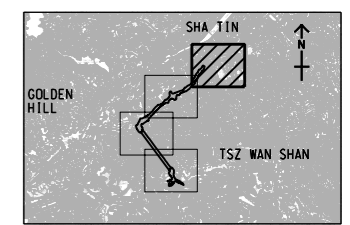
| IR | DATE | DESCRIPTION | CHK. |
|----|------|-------------|------|
|    |      |             |      |
|    |      |             |      |
|    |      |             |      |
|    |      |             |      |

**STATUS**

**SCALE**      **DIMENSION UNIT**

A3 1 : 4000      METRES

**KEY PLAN**      A3 1 : 20000



**PROJECT NO.**      **AGREEMENT NO.**  
 60604728      CE 48/2018(HY)

**SHEET TITLE**  
 GENERAL LAYOUT

**SHEET NUMBER**  
 60604728/SK7069

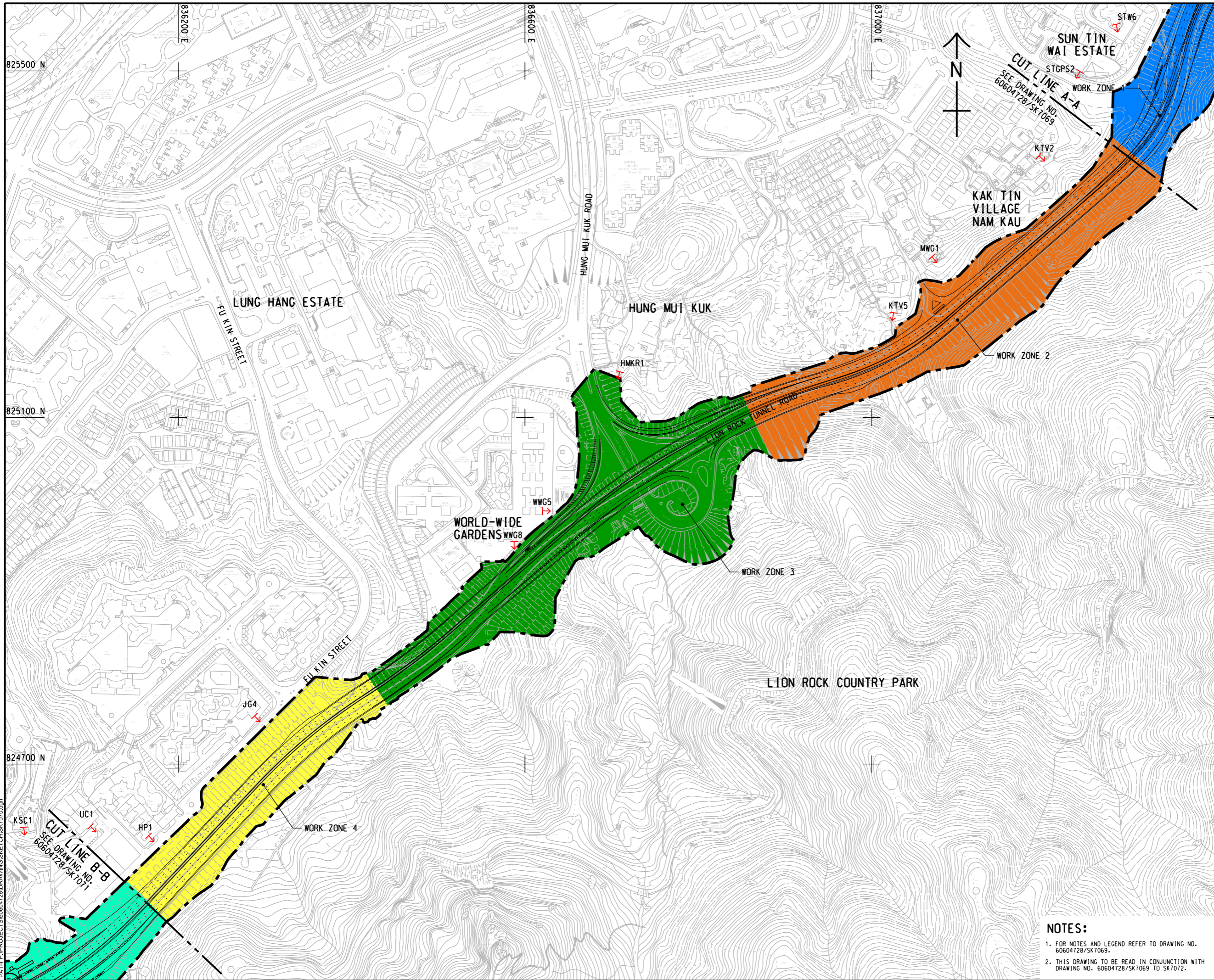
SHEET 1 OF 4

Plot File by: ZHLZ  
 PATH: P:\PROJECTS\60604728\DRAWING\SK7069\CH1SK7069.dgn  
 2022/6/23

This drawing has been prepared for the use of AECOM's client. It may not be used, modified, reproduced or relied upon by third parties, except as agreed by AECOM or as required by law. AECOM accepts no responsibility, and disclaims any liability, whatsoever, for any part, that assess or relies on this drawing without AECOM's express written consent. All measurements must be obtained from the stated dimensions.



ISO A1 594mm x 841mm  
 Approved:  
 Checked:  
 Designer:  
 Project Management Initials:  
 2022/6/22  
 File by: ZHLZ  
 PATH: P:\PROJECTS\60604728\DRAWINGS\K1\CHSK7070.dgn



**AECOM**

PROJECT  
**IMPROVEMENT OF  
 LION ROCK TUNNEL -  
 INVESTIGATION**

CLIENT  
 **HIGHWAYS  
 DEPARTMENT**

CONSULTANT  
 AECOM Asia Company Ltd.  
 www.aecom.com

SUB-CONSULTANTS  
 分判工程顧問公司

ISSUE/REVISION

| NO. | DATE | DESCRIPTION | CHK. |
|-----|------|-------------|------|
|     |      |             |      |
|     |      |             |      |
|     |      |             |      |

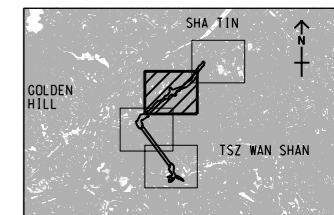
| NO. | DATE | DESCRIPTION | CHK. |
|-----|------|-------------|------|
|     |      |             |      |

STATUS

SCALE DIMENSION UNIT

A3 1 : 4000 METRES

KEY PLAN A3 1 : 20000



PROJECT NO. AGREEMENT NO.  
 60604728 CE 48/2018(HY)

SHEET TITLE  
 GENERAL LAYOUT

SHEET NUMBER  
 60604728/SK7070

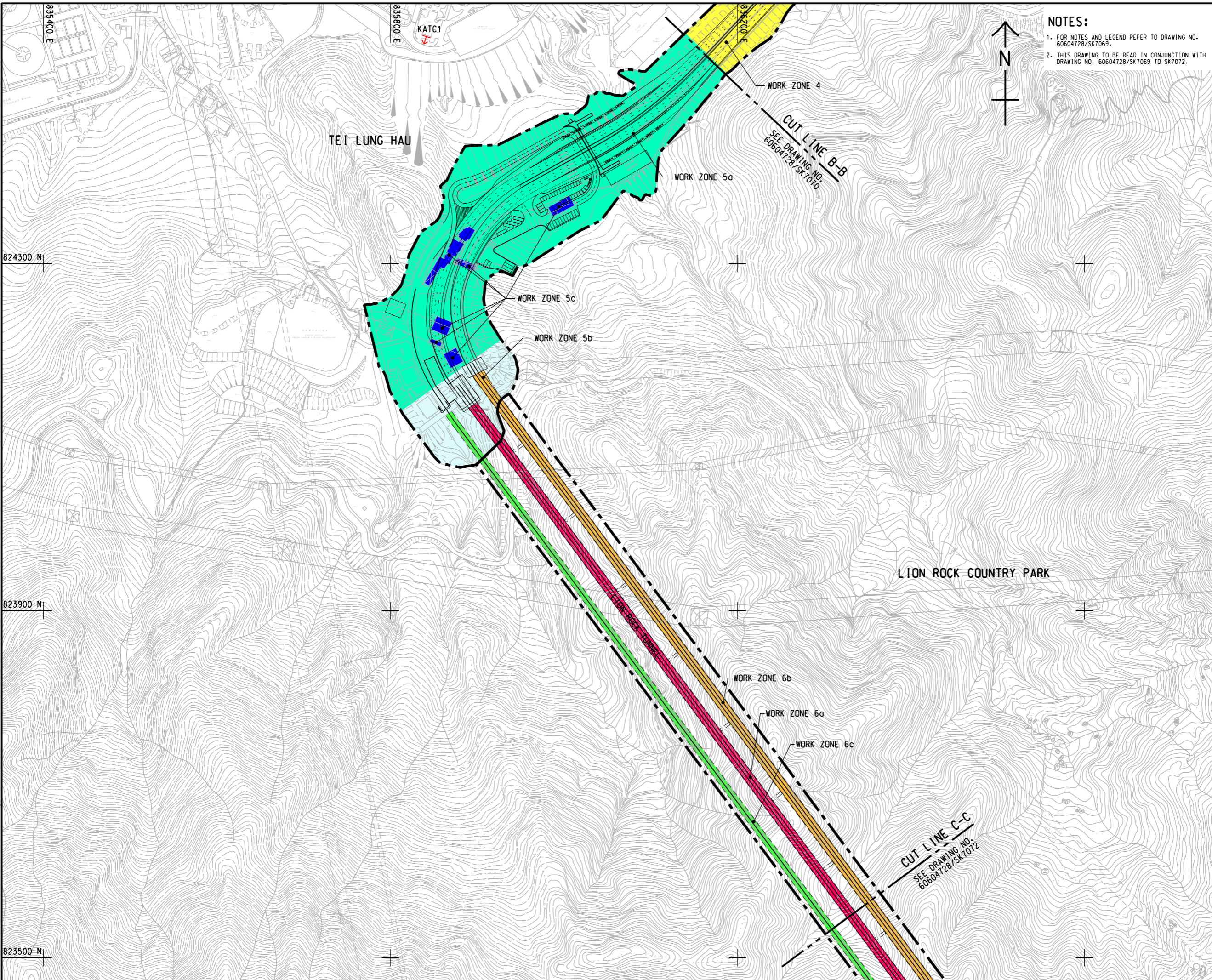
**NOTES:**

- FOR NOTES AND LEGEND REFER TO DRAWING NO. 60604728/SK7069.
- THIS DRAWING TO BE READ IN CONJUNCTION WITH DRAWING NO. 60604728/SK7069 TO SK7072.

This drawing has been prepared for the use of AECOM's client. It may not be used, modified, reproduced or relied upon by third parties, except as agreed by AECOM or as required by law. AECOM accepts no responsibility, and denies any liability, whatsoever, to any party, that uses or relies on this drawing without AECOM's express written consent. All measurements must be obtained from the stated dimensions.



ISO A1 594mm x 841mm  
 Approved:  
 Checked:  
 Designer:  
 Project Management Initials:  
 2022/06/22  
 PATH P:\PROJECTS\60604728\DRAWINGS\SKETCH\SK7071.dgn  
 Plot File by: ZHLZ



**NOTES:**  
 1. FOR NOTES AND LEGEND REFER TO DRAWING NO. 60604728/SK7069.  
 2. THIS DRAWING TO BE READ IN CONJUNCTION WITH DRAWING NO. 60604728/SK7069 TO SK7072.



**AECOM**

**PROJECT**  
 IMPROVEMENT OF LION ROCK TUNNEL - INVESTIGATION

**CLIENT**  
 路政署  
**HIGHWAYS DEPARTMENT**

**CONSULTANT**  
 AECOM Asia Company Ltd.  
 www.aecom.com

**SUB-CONSULTANTS**  
 分判工程顧問公司

**ISSUE/REVISION**

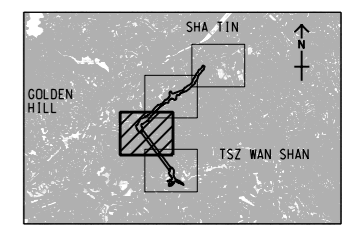
| IR | DATE | DESCRIPTION | CHK. |
|----|------|-------------|------|
|    |      |             |      |
|    |      |             |      |
|    |      |             |      |
|    |      |             |      |

**STATUS**

**SCALE**  
 A3 1 : 4000

**DIMENSION UNIT**  
 METRES

**KEY PLAN** A3 1 : 20000



**PROJECT NO.**  
 60604728

**AGREEMENT NO.**  
 CE 48/2018(HY)

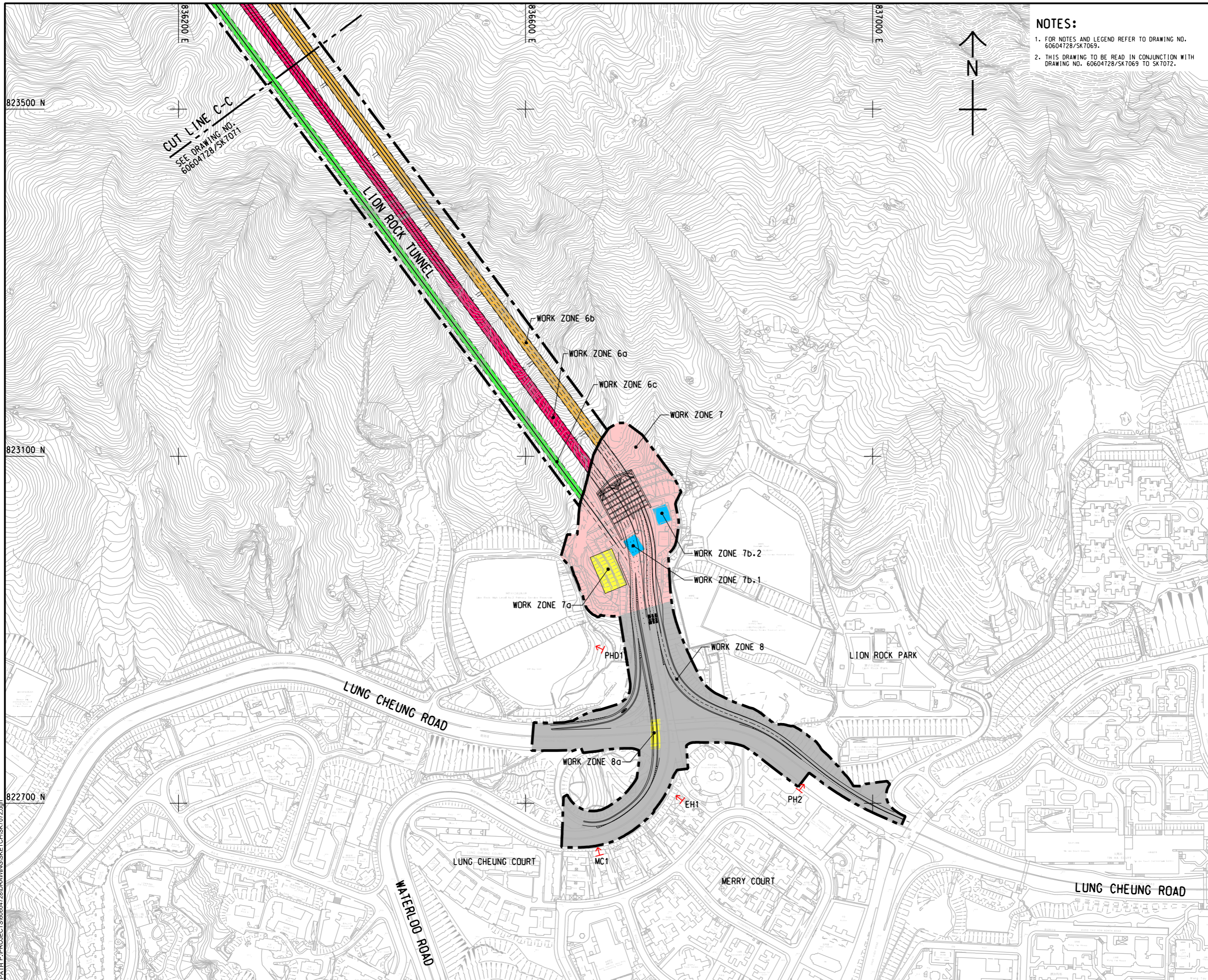
**SHEET TITLE**  
 GENERAL LAYOUT

**SHEET NUMBER**  
 60604728/SK7071

This drawing has been prepared for the use of AECOM's client. It may not be used, modified, reproduced or relied upon by third parties, except as agreed by AECOM or as required by law. AECOM accepts no responsibility, and denies any liability whatsoever, for any part, that uses or relies on this drawing without AECOM's express written consent. All measurements must be obtained from the stated dimensions.

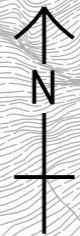


ISO A1 594mm x 841mm  
 Approved:  
 Checked:  
 Designer:  
 Project Management Initials:  
 2022/06/24  
 PATH P:\PROJECTS\60604728\DRAWING\SK7072.dwg  
 This drawing has been prepared for the use of AECOM's client. It may not be used, modified, reproduced or relied upon by third parties, except as agreed by AECOM or as required by law. AECOM accepts no responsibility, and disclaims any liability whatsoever, for any part, that is used or relied on in this drawing without AECOM's express written consent. All measurements must be obtained from the stated dimensions.



**NOTES:**

- FOR NOTES AND LEGEND REFER TO DRAWING NO. 60604728/SK7069.
- THIS DRAWING TO BE READ IN CONJUNCTION WITH DRAWING NO. 60604728/SK7069 TO SK7072.



**AECOM**

PROJECT  
 項目  
**IMPROVEMENT OF LION ROCK TUNNEL - INVESTIGATION**

CLIENT  
 業主  
**路政署  
 HIGHWAYS DEPARTMENT**

CONSULTANT  
 顧問公司  
**AECOM Asia Company Ltd.  
 www.aecom.com**

SUB-CONSULTANTS  
 分判工程師/顧問公司

**ISSUE/REVISION**  
 修訂

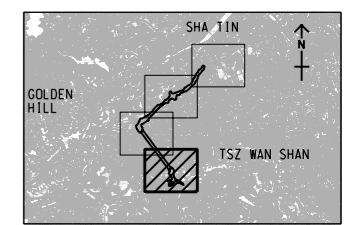
| IR | DATE | DESCRIPTION | CHK. |
|----|------|-------------|------|
|    |      |             |      |
|    |      |             |      |
|    |      |             |      |
|    |      |             |      |

**STATUS**  
 狀態

**SCALE**  
 比例尺  
 A3 1 : 4000

**DIMENSION UNIT**  
 尺寸單位  
 METRES

**KEY PLAN** A3 1 : 200000



**PROJECT NO.**  
 項目編號  
 60604728

**AGREEMENT NO.**  
 協議編號  
 CE 48/2018(HY)

**SHEET TITLE**  
 圖紙名稱  
 GENERAL LAYOUT

**SHEET NUMBER**  
 圖紙編號  
 60604728/SK7072

SHEET 4 OF 4



### Appendix 4.3 - Construction Programme, Locations of Works Areas and Distance to Notional Sources

| NAP ID. | Area    | Distance between NAP and Notional Source Position (m) |     |                  |                  |                  |     |                   |     |                   |                   |                   |     |     |      |      |     |
|---------|---------|---|-----|------------------|------------------|------------------|-----|-------------------|-----|-------------------|-------------------|-------------------|-----|-----|------|------|-----|
|         |         | Work Zone   |     |                  |                  |                  |     |                   |     |                   |                   |                   |     |     |      |      |     |
|         |         | 1 <sup>(2)</sup>                                      | 1a  | 2 <sup>(2)</sup> | 3 <sup>(2)</sup> | 4 <sup>(2)</sup> | 5a  | 5b <sup>(3)</sup> | 5c  | 6a <sup>(3)</sup> | 6b <sup>(3)</sup> | 6c <sup>(3)</sup> | 7   | 7a  | 7b.1 | 7b.2 | 8   |
| EH1     | Kowloon |   |     |                  |                  |                  |     |                   |     |                   |                   | 272               | 266 | 293 |      | 44   | 74  |
| MC1     | Kowloon |   |     |                  |                  |                  |     |                   |     |                   |                   |                   |     |     |      | 88   | 146 |
| PH2     | Kowloon |   |     |                  |                  |                  |     |                   |     |                   |                   |                   |     |     |      | 52   | 172 |
| PHD1    | Kowloon |   |     |                  |                  |                  |     |                   |     | 162               | 122               | 86                | 78  | 119 | 162  | 66   | 105 |
| WSH2    | Shatin  | 46  | 99  |                  |                  |                  |     |                   |     |                   |                   |                   |     |     |      |      |     |
| STTNV1  | Shatin  | 45  | 96  |                  |                  |                  |     |                   |     |                   |                   |                   |     |     |      |      |     |
| STTNV2  | Shatin  | 32  | 67  |                  |                  |                  |     |                   |     |                   |                   |                   |     |     |      |      |     |
| STTNV5  | Shatin  | 34  | 143 | 218              |                  |                  |     |                   |     |                   |                   |                   |     |     |      |      |     |
| STW2    | Shatin  | 45  | 60  |                  |                  |                  |     |                   |     |                   |                   |                   |     |     |      |      |     |
| STW6    | Shatin  | 73  | 212 | 174              |                  |                  |     |                   |     |                   |                   |                   |     |     |      |      |     |
| STGPS2  | Shatin  | 81  | 278 | 117              |                  |                  |     |                   |     |                   |                   |                   |     |     |      |      |     |
| KTV2    | Shatin  | 130   |     | 83               |                  |                  |     |                   |     |                   |                   |                   |     |     |      |      |     |
| MWG1    | Shatin  |   |     | 62               |                  |                  |     |                   |     |                   |                   |                   |     |     |      |      |     |
| KTV5    | Shatin  |   |     | 29               | 246              |                  |     |                   |     |                   |                   |                   |     |     |      |      |     |
| HMKR1   | Shatin  |   |     | 187              | 54               |                  |     |                   |     |                   |                   |                   |     |     |      |      |     |
| WWG5    | Shatin  |   |     |                  | 53               |                  |     |                   |     |                   |                   |                   |     |     |      |      |     |
| WWG8    | Shatin  |   |     |                  | 25               | 276              |     |                   |     |                   |                   |                   |     |     |      |      |     |
| JG4     | Shatin  |   |     |                  | 188              | 37               |     |                   |     |                   |                   |                   |     |     |      |      |     |
| UC1     | Shatin  |   |     |                  |                  | 94               | 101 |                   | 274 |                   |                   |                   |     |     |      |      |     |
| HP1     | Shatin  |   |     |                  |                  | 59               | 106 |                   | 295 |                   |                   |                   |     |     |      |      |     |
| KSC1    | Shatin  |   |     |                  |                  | 163              | 165 |                   | 256 |                   |                   |                   |     |     |      |      |     |
| KATC1   | Shatin  |   |     |                  |                  |                  | 160 | 390               | 233 | 391               | 378               | 428               |     |     |      |      |     |

Notes:

(1) Cell in blank means the NSR is more than 300m from the notional source position of work zone

(2) The work zone is linear in shape with a length to width ratio exceeding 5 : 1. Only the dominant portion, which is the portion of the linear site closest to the NAP and having a length to width ratio of 5:1, is considered for determination of the notional source position.

(3) Zone 5b, 6a, 6b & 6c are located more than 300m away from the nearest NSR in Shatin side. Nevertheless, construction noise impacts from these zones have been evaluated at the nearest NSR in Shatin Side.