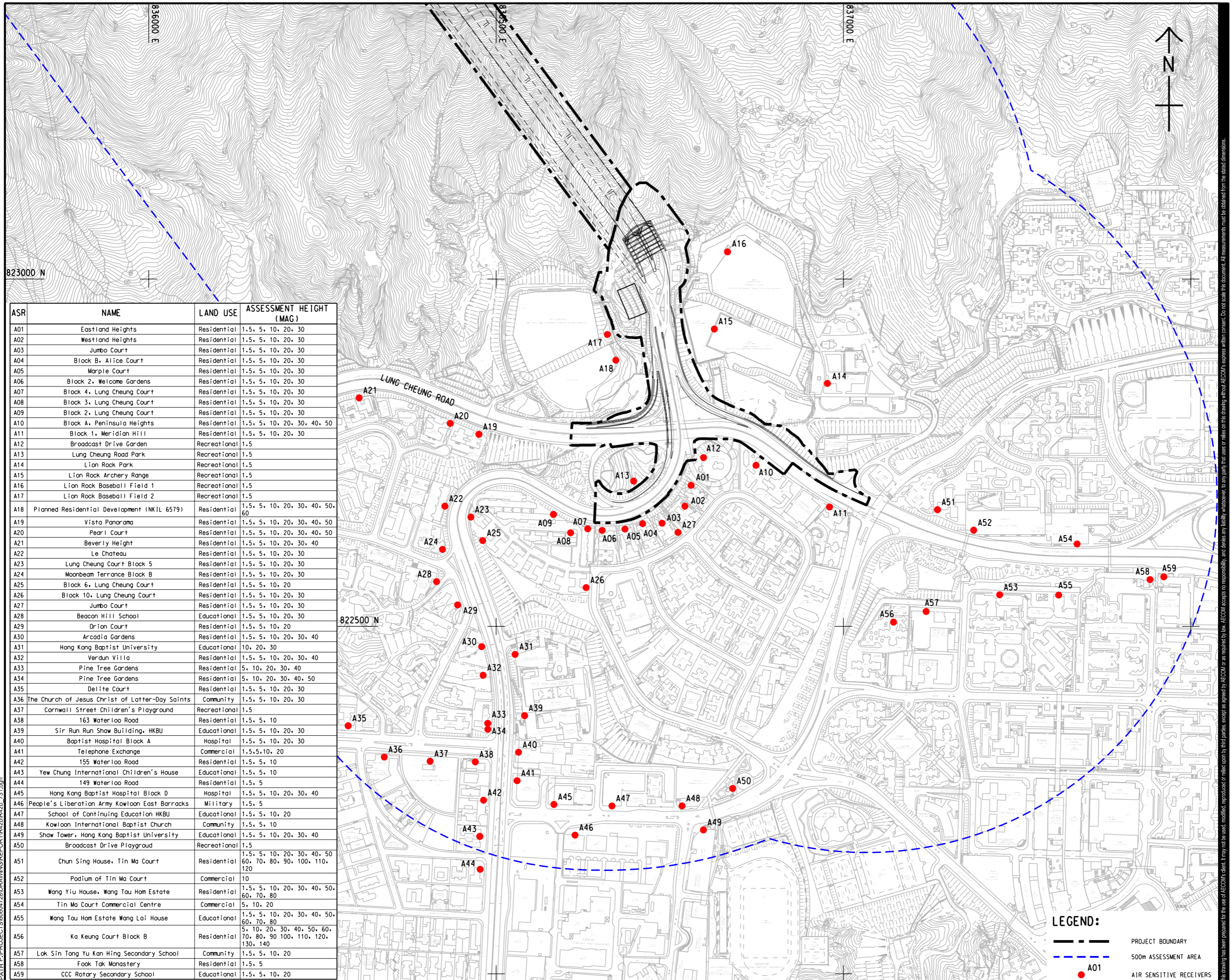




ISO A1 594mm x 841mm  
 Approved:  
 Checked:  
 Designer:  
 Project Management Initials:  
 2022/06/7  
 P:\PROJECTS\60604728\DRAWING\REPORT\42b\42b\_731.dgn  
 Plot File by: ZHLZ



ASR	NAME	LAND USE	ASSESSMENT HEIGHT (MAG)
A01	Eastland Heights	Residential	1.5, 5, 10, 20, 30
A02	Westland Heights	Residential	1.5, 5, 10, 20, 30
A03	Jumbo Court	Residential	1.5, 5, 10, 20, 30
A04	Block B, Alice Court	Residential	1.5, 5, 10, 20, 30
A05	Marple Court	Residential	1.5, 5, 10, 20, 30
A06	Block 2, Welcome Gardens	Residential	1.5, 5, 10, 20, 30
A07	Block 4, Lung Cheung Court	Residential	1.5, 5, 10, 20, 30
A08	Block 3, Lung Cheung Court	Residential	1.5, 5, 10, 20, 30
A09	Block 2, Lung Cheung Court	Residential	1.5, 5, 10, 20, 30
A10	Block A, Peninsula Heights	Residential	1.5, 5, 10, 20, 30, 40, 50
A11	Block 1, Meridian Hill	Residential	1.5, 5, 10, 20, 30
A12	Broadcast Drive Garden	Recreational	1.5
A13	Lung Cheung Road Park	Recreational	1.5
A14	Lion Rock Park	Recreational	1.5
A15	Lion Rock Archery Range	Recreational	1.5
A16	Lion Rock Baseball Field 1	Recreational	1.5
A17	Lion Rock Baseball Field 2	Recreational	1.5
A18	Planned Residential Development (NKIL 6579)	Residential	1.5, 5, 10, 20, 30, 40, 50, 60
A19	Vista Panorama	Residential	1.5, 5, 10, 20, 30, 40, 50
A20	Pearl Court	Residential	1.5, 5, 10, 20, 30, 40, 50
A21	Beverly Height	Residential	1.5, 5, 10, 20, 30, 40
A22	Le Chateau	Residential	1.5, 5, 10, 20, 30
A23	Lung Cheung Court Block 5	Residential	1.5, 5, 10, 20, 30
A24	Moonbeam Terrace Block B	Residential	1.5, 5, 10, 20, 30
A25	Block 6, Lung Cheung Court	Residential	1.5, 5, 10, 20
A26	Block 10, Lung Cheung Court	Residential	1.5, 5, 10, 20, 30
A27	Jumbo Court	Residential	1.5, 5, 10, 20, 30
A28	Beacon Hill School	Educational	1.5, 5, 10, 20, 30
A29	Orion Court	Residential	1.5, 5, 10, 20
A30	Arcadia Gardens	Residential	1.5, 5, 10, 20, 30, 40
A31	Hong Kong Baptist University	Educational	10, 20, 30
A32	Verdun Villa	Residential	1.5, 5, 10, 20, 30, 40
A33	Pine Tree Gardens	Residential	5, 10, 20, 30, 40
A34	Pine Tree Gardens	Residential	5, 10, 20, 30, 40, 50
A35	Delite Court	Residential	1.5, 5, 10, 20, 30
A36	The Church of Jesus Christ of Latter-Day Saints	Community	1.5, 5, 10, 20, 30
A37	Cornwall Street Children's Playground	Recreational	1.5
A38	163 Waterloo Road	Residential	1.5, 5, 10
A39	Sir Run Run Shaw Building, HKBU	Educational	1.5, 5, 10, 20, 30
A40	Baptist Hospital Block A	Hospital	1.5, 5, 10, 20, 30
A41	Telephone Exchange	Commercial	1.5, 5, 10, 20
A42	155 Waterloo Road	Residential	1.5, 5, 10
A43	Yew Chung International Children's House	Educational	1.5, 5, 10
A44	149 Waterloo Road	Residential	1.5, 5
A45	Hong Kong Baptist Hospital Block D	Hospital	1.5, 5, 10, 20, 30, 40
A46	People's Liberation Army Kowloon East Barracks	Military	1.5, 5
A47	School of Continuing Education HKBU	Educational	1.5, 5, 10, 20
A48	Kowloon International Baptist Church	Community	1.5, 5, 10
A49	Shaw Tower, Hong Kong Baptist University	Educational	1.5, 5, 10, 20, 30, 40
A50	Broadcast Drive Playgroud	Recreational	1.5
A51	Chun Sing House, Tin Ma Court	Residential	1.5, 5, 10, 20, 30, 40, 50, 60, 70, 80, 90, 100, 110, 120
A52	Podium of Tin Ma Court	Commercial	10
A53	Wang Yiu House, Wang Tau Hom Estate	Residential	1.5, 5, 10, 20, 30, 40, 50, 60, 70, 80
A54	Tin Ma Court Commercial Centre	Commercial	5, 10, 20
A55	Wang Tau Hom Estate Wang Lai House	Educational	1.5, 5, 10, 20, 30, 40, 50, 60, 70, 80
A56	Ka Keung Court Block B	Residential	5, 10, 20, 30, 40, 50, 60, 70, 80, 90, 100, 110, 120, 130, 140
A57	Lok Sin Tong Yu Kan Hing Secondary School	Community	1.5, 5, 10, 20
A58	Fook Tak Monastery	Residential	1.5, 5
A59	CCC Rotary Secondary School	Educational	1.5, 5, 10, 20



**PROJECT**  
 IMPROVEMENT OF LION ROCK TUNNEL - INVESTIGATION

**CLIENT**  

 路政署  
**HIGHWAYS DEPARTMENT**

**CONSULTANT**  
 AECOM Asia Company Ltd.  
 www.aecom.com

**SUB-CONSULTANTS**  
 分列工程顧問公司

---

**ISSUE/REVISION**

IR	DATE	DESCRIPTION	CHK.

---

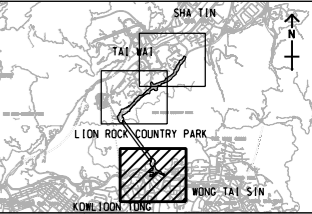
**STATUS**  
 10/18

---

**SCALE**      **DIMENSION UNIT**  
 A3 1:5000      METRES

---

**KEY PLAN**      A3 1:200000




---

**PROJECT NO.**      **AGREEMENT NO.**  
 60604728      CE 48/2018(HY)

---

**SHEET TITLE**  
 LOCATION OF AIR SENSITIVE RECEIVER ON KOWLOON SIDE

---

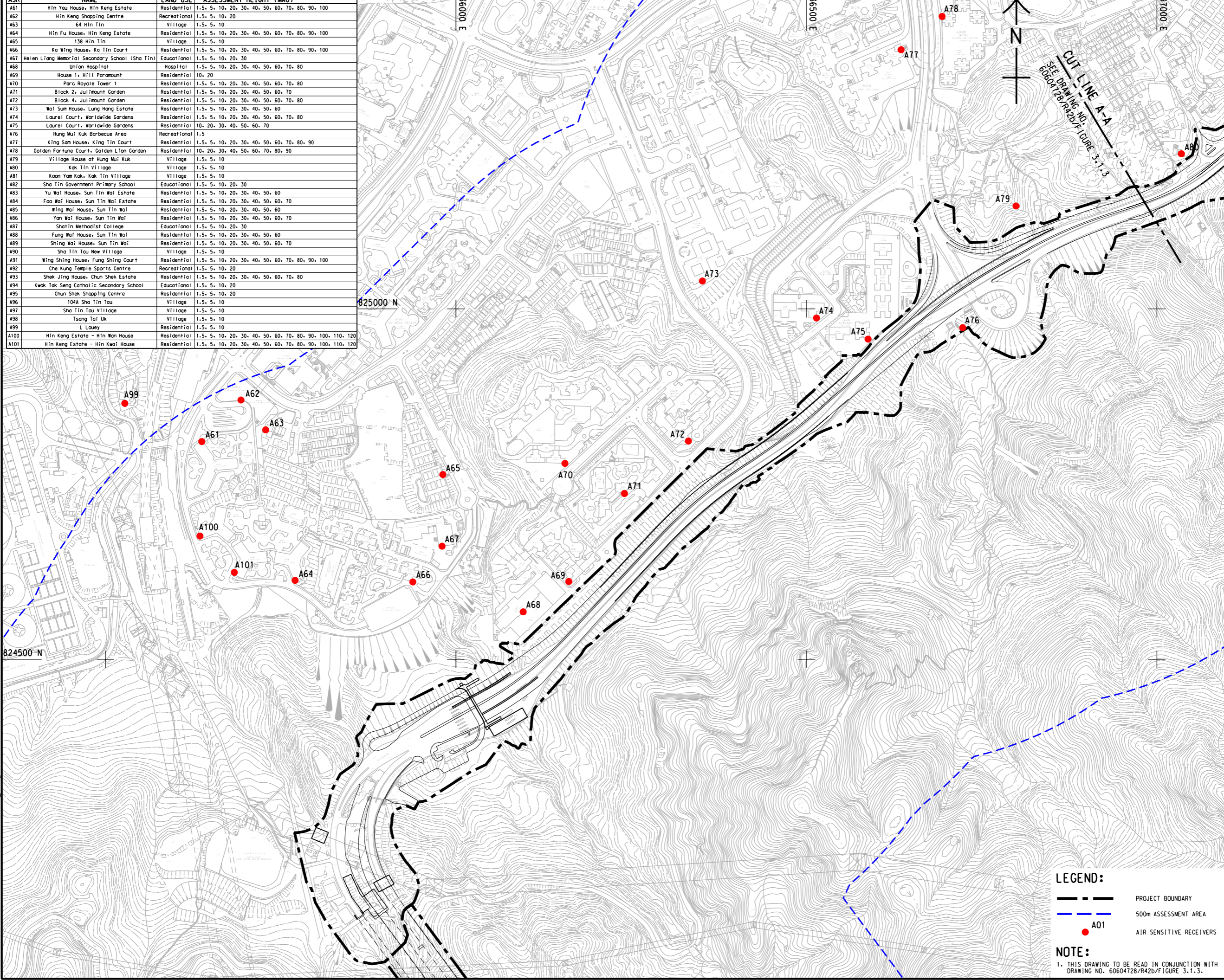
**SHEET NUMBER**  
 60604728/R42b/FIGURE 3.1.1

**LEGEND:**

- PROJECT BOUNDARY
- 500m ASSESSMENT AREA
- A01 AIR SENSITIVE RECEIVERS

This drawing has been prepared for the use of AECOM's client. It may not be used, modified, reproduced or relied upon by third parties, except as agreed by AECOM or as required by law. AECOM accepts no responsibility, and disclaims any liability whatsoever, for any part, that assess or relies on this drawing without AECOM's express written consent. All measurements must be obtained from the stated dimensions.

ASR	NAME	LAND USE	ASSESSMENT HEIGHT (MAG)
A61	Hin Yau House, Hin Keng Estate	Residential	1.5, 5, 10, 20, 30, 40, 50, 60, 70, 80, 90, 100
A62	Hin Keng Shopping Centre	Recreational	1.5, 5, 10, 20
A63	64 Hin Tin	Village	1.5, 5, 10
A64	Hin Fu House, Hin Keng Estate	Residential	1.5, 5, 10, 20, 30, 40, 50, 60, 70, 80, 90, 100
A65	138 Hin Tin	Village	1.5, 5, 10
A66	Ka Wing House, Ka Tin Court	Residential	1.5, 5, 10, 20, 30, 40, 50, 60, 70, 80, 90, 100
A67	Heien Liang Memorial Secondary School (Sha Tin)	Educational	1.5, 5, 10, 20, 30
A68	Union Hospital	Hospital	1.5, 5, 10, 20, 30, 40, 50, 60, 70, 80
A69	House 1, Hill Paramount	Residential	10, 20
A70	Parc Royale Tower 1	Residential	1.5, 5, 10, 20, 30, 40, 50, 60, 70, 80
A71	Block 2, Julimount Garden	Residential	1.5, 5, 10, 20, 30, 40, 50, 60, 70
A72	Block 4, Julimount Garden	Residential	1.5, 5, 10, 20, 30, 40, 50, 60, 70, 80
A73	Wai Sum House, Lung Hang Estate	Residential	1.5, 5, 10, 20, 30, 40, 50, 60
A74	Laurel Court, Worldwide Gardens	Residential	1.5, 5, 10, 20, 30, 40, 50, 60, 70, 80
A75	Laurel Court, Worldwide Gardens	Residential	10, 20, 30, 40, 50, 60, 70
A76	Hung Mui Kuk Barbecue Area	Recreational	1.5
A77	King Sam House, King Tin Court	Residential	1.5, 5, 10, 20, 30, 40, 50, 60, 70, 80, 90
A78	Golden Fortune Court, Golden Lion Garden	Residential	10, 20, 30, 40, 50, 60, 70, 80, 90
A79	Village House at Hung Mui Kuk	Village	1.5, 5, 10
A80	Kak Tin Village	Village	1.5, 5, 10
A81	Koon Yam Kak, Kak Tin Village	Village	1.5, 5, 10
A82	Sha Tin Government Primary School	Educational	1.5, 5, 10, 20, 30
A83	Yu Wai House, Sun Tin Wai Estate	Residential	1.5, 5, 10, 20, 30, 40, 50, 60
A84	Foo Wai House, Sun Tin Wai Estate	Residential	1.5, 5, 10, 20, 30, 40, 50, 60, 70
A85	Wing Wai House, Sun Tin Wai	Residential	1.5, 5, 10, 20, 30, 40, 50, 60
A86	Yan Wai House, Sun Tin Wai	Residential	1.5, 5, 10, 20, 30, 40, 50, 60, 70
A87	Shatin Methodist College	Educational	1.5, 5, 10, 20, 30
A88	Fung Wai House, Sun Tin Wai	Residential	1.5, 5, 10, 20, 30, 40, 50, 60
A89	Shing Wai House, Sun Tin Wai	Residential	1.5, 5, 10, 20, 30, 40, 50, 60, 70
A90	Sha Tin Tau New Village	Village	1.5, 5, 10
A91	Wing Shing House, Fung Shing Court	Residential	1.5, 5, 10, 20, 30, 40, 50, 60, 70, 80, 90, 100
A92	Che Kung Temple Sports Centre	Recreational	1.5, 5, 10, 20
A93	Shek Jing House, Chun Shek Estate	Residential	1.5, 5, 10, 20, 30, 40, 50, 60, 70, 80
A94	Kwok Tak Seng Catholic Secondary School	Educational	1.5, 5, 10, 20
A95	Chun Shek Shopping Centre	Residential	1.5, 5, 10, 20
A96	104A Sha Tin Tau	Village	1.5, 5, 10
A97	Sha Tin Tau Village	Village	1.5, 5, 10
A98	Tsang Tai Uk	Village	1.5, 5, 10
A99	L Lauey	Residential	1.5, 5, 10
A100	Hin Keng Estate - Hin Wan House	Residential	1.5, 5, 10, 20, 30, 40, 50, 60, 70, 80, 90, 100, 110, 120
A101	Hin Keng Estate - Hin Kwai House	Residential	1.5, 5, 10, 20, 30, 40, 50, 60, 70, 80, 90, 100, 110, 120



**AECOM**

PROJECT  
IMPROVEMENT OF LION ROCK TUNNEL - INVESTIGATION

CLIENT  
**路政署 HIGHWAYS DEPARTMENT**

CONSULTANT  
AECOM Asia Company Ltd.  
www.aecom.com

SUB-CONSULTANTS  
分列工程顧問公司

ISSUE/REVISION

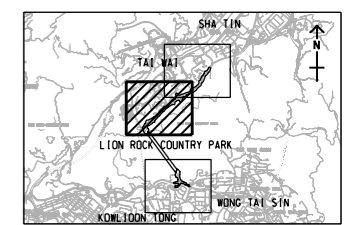
NO.	DATE	DESCRIPTION	CHK.

STATUS

DATE

SCALE: A3 1:5000 DIMENSION UNIT: METRES

KEY PLAN: A3 1:20000



PROJECT NO. 60604728 AGREEMENT NO. CE 48/2018(HY)

SHEET TITLE: LOCATION OF AIR SENSITIVE RECEIVER ON SHATIN SIDE SHEET 1 OF 2

SHEET NUMBER: 60604728/R42b/FIGURE 3.1.2

**LEGEND:**

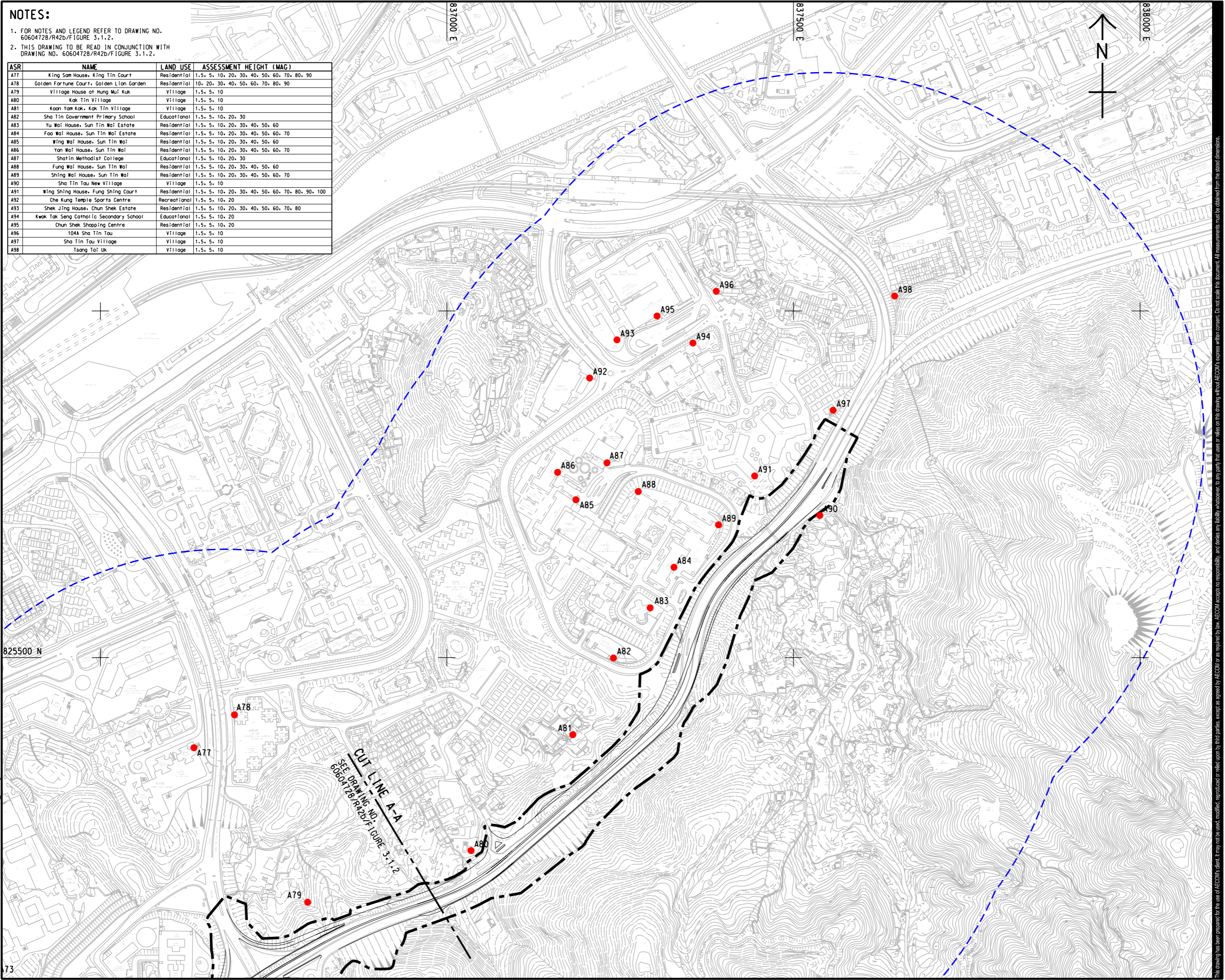
- PROJECT BOUNDARY
- ... 500m ASSESSMENT AREA
- A01 AIR SENSITIVE RECEIVERS

**NOTE:**

1. THIS DRAWING TO BE READ IN CONJUNCTION WITH DRAWING NO. 60604728/R42b/FIGURE 3.1.3.

This drawing has been prepared for the use of AECOM's client. It may not be used, modified, reproduced or relied upon by third parties, except as agreed by AECOM or as required by law. AECOM accepts no responsibility, and denies any liability whatsoever, for any part, that less or relies on this drawing without AECOM's express written consent. All measurements must be obtained from the stated dimensions.

ISO A1 594mm x 841mm  
Approved:  
Checked:  
Designer:  
Project Management Initials:  
2022/6/14  
24TH FLOOR PROJECTS@60604728/DRAWING/REPORT/428/R42b\_733.dgn  
73



**NOTES:**

- FOR NOTES AND LEGEND REFER TO DRAWING NO. 60604728/R42b/FIGURE 3.1.2.
- THIS DRAWING TO BE READ IN CONJUNCTION WITH DRAWING NO. 60604728/R42b/FIGURE 3.1.2.

ASR	NAME	LAND USE	ASSESSMENT HEIGHT (MAG)
A77	King Sam House, King Tin Court	Residential	1.5, 5, 10, 20, 30, 40, 50, 60, 70, 80, 90
A78	Golden Fortune Court, Golden Lion Garden	Residential	10, 20, 30, 40, 50, 60, 70, 80, 90
A79	Village House at Hung Mui Kuk	Village	1.5, 5, 10
A80	Kak Tin Village	Village	1.5, 5, 10
A81	Kaan Yam Kok, Kak Tin Village	Village	1.5, 5, 10
A82	Sha Tin Government Primary School	Educational	1.5, 5, 10, 20, 30
A83	Yu Wai House, Sun Tin Wai Estate	Residential	1.5, 5, 10, 20, 30, 40, 50, 60
A84	Foo Wai House, Sun Tin Wai Estate	Residential	1.5, 5, 10, 20, 30, 40, 50, 60, 70
A85	Wing Wai House, Sun Tin Wai	Residential	1.5, 5, 10, 20, 30, 40, 50, 60
A86	Yan Wai House, Sun Tin Wai	Residential	1.5, 5, 10, 20, 30, 40, 50, 60, 70
A87	Shatin Methodist College	Educational	1.5, 5, 10, 20, 30
A88	Fung Wai House, Sun Tin Wai	Residential	1.5, 5, 10, 20, 30, 40, 50, 60
A89	Shing Wai House, Sun Tin Wai	Residential	1.5, 5, 10, 20, 30, 40, 50, 60, 70
A90	Sha Tin Tau New Village	Village	1.5, 5, 10
A91	Wing Shing House, Fung Shing Court	Residential	1.5, 5, 10, 20, 30, 40, 50, 60, 70, 80, 90, 100
A92	Che Kung Temple Sports Centre	Recreational	1.5, 5, 10, 20
A93	Shek Jing House, Chun Shek Estate	Residential	1.5, 5, 10, 20, 30, 40, 50, 60, 70, 80
A94	Kwok Tak Seng Catholic Secondary School	Educational	1.5, 5, 10, 20
A95	Chun Shek Shopping Centre	Residential	1.5, 5, 10, 20
A96	104A Sha Tin Tau	Village	1.5, 5, 10
A97	Sha Tin Tau Village	Village	1.5, 5, 10
A98	Tsang Tai Uk	Village	1.5, 5, 10

**AECOM**

PROJECT  
60604728/R42b/FIGURE 3.1.2

**IMPROVEMENT OF LION ROCK TUNNEL - INVESTIGATION**

CLIENT  
路政署  
**HIGHWAYS DEPARTMENT**

CONSULTANT  
AECOM Asia Company Ltd.  
www.aecom.com

SUB-CONSULTANTS  
分判工程顧問公司

ISSUE/REVISION	DATE	DESCRIPTION	CHK.

STATUS

SCALE  
A3 1:5000

DIMENSION UNIT  
METRES

KEY PLAN  
A3 1:20000

PROJECT NO.  
60604728

AGREEMENT NO.  
CE 48/2018(HY)

SHEET TITLE  
LOCATION OF AIR SENSITIVE RECEIVER ON SHATIN SIDE

SHEET NUMBER  
60604728/R42b/FIGURE 3.1.3

SHEET 2 OF 2

This drawing has been prepared for the use of AECOM's client. It may not be used, modified, reproduced or relied upon by third parties, except as agreed by AECOM or as required by law. AECOM accepts no responsibility, and disclaims any liability, whatsoever, to any party, that uses or relies on this drawing without AECOM's express written consent. All measurements must be obtained from the stated dimensions.