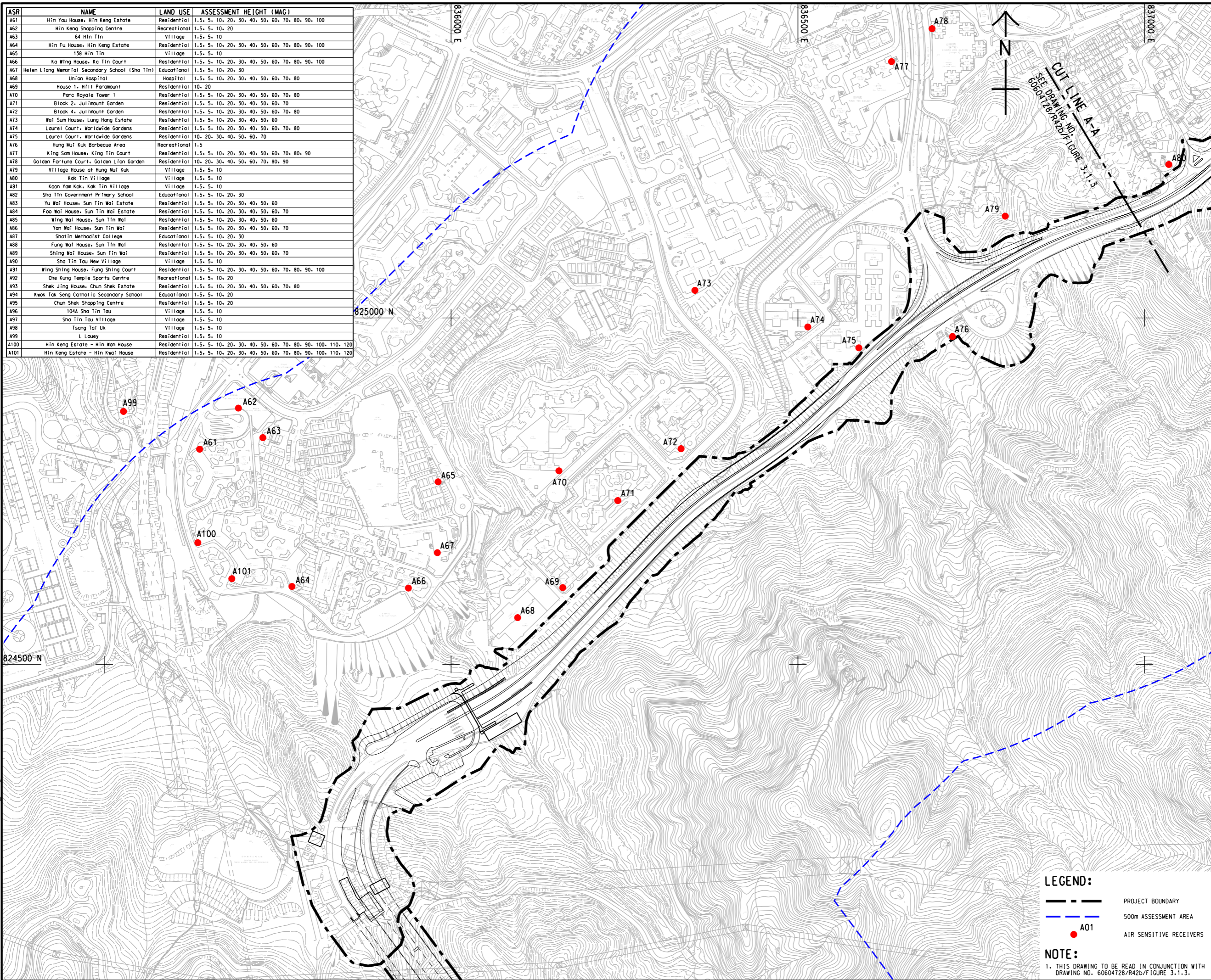


ASR	NAME	LAND USE	ASSESSMENT HEIGHT (MAG)
A61	Hin Yau House, Hin Keng Estate	Residential	1.5, 5, 10, 20, 30, 40, 50, 60, 70, 80, 90, 100
A62	Hin Keng Shopping Centre	Recreational	1.5, 5, 10, 20
A63	64 Hin Tin	Village	1.5, 5, 10
A64	Hin Fu House, Hin Keng Estate	Residential	1.5, 5, 10, 20, 30, 40, 50, 60, 70, 80, 90, 100
A65	138 Hin Tin	Village	1.5, 5, 10
A66	Ka Wing House, Ka Tin Court	Residential	1.5, 5, 10, 20, 30, 40, 50, 60, 70, 80, 90, 100
A67	Heien Liang Memorial Secondary School (Sha Tin)	Educational	1.5, 5, 10, 20, 30
A68	Union Hospital	Hospital	1.5, 5, 10, 20, 30, 40, 50, 60, 70, 80
A69	House 1, Hill Paramount	Residential	10, 20
A70	Parc Royale Tower 1	Residential	1.5, 5, 10, 20, 30, 40, 50, 60, 70, 80
A71	Block 2, Julimount Garden	Residential	1.5, 5, 10, 20, 30, 40, 50, 60, 70
A72	Block 4, Julimount Garden	Residential	1.5, 5, 10, 20, 30, 40, 50, 60, 70, 80
A73	Wai Sum House, Lung Hang Estate	Residential	1.5, 5, 10, 20, 30, 40, 50, 60
A74	Laurel Court, Worldwide Gardens	Residential	1.5, 5, 10, 20, 30, 40, 50, 60, 70, 80
A75	Laurel Court, Worldwide Gardens	Residential	10, 20, 30, 40, 50, 60, 70
A76	Hung Mui Kuk Barbecue Area	Recreational	1.5
A77	King Sam House, King Tin Court	Residential	1.5, 5, 10, 20, 30, 40, 50, 60, 70, 80, 90
A78	Golden Fortune Court, Golden Lion Garden	Residential	10, 20, 30, 40, 50, 60, 70, 80, 90
A79	Village House at Hung Mui Kuk	Village	1.5, 5, 10
A80	Kak Tin Village	Village	1.5, 5, 10
A81	Koon Yam Kak, Kak Tin Village	Village	1.5, 5, 10
A82	Sha Tin Government Primary School	Educational	1.5, 5, 10, 20, 30
A83	Yu Wai House, Sun Tin Wai Estate	Residential	1.5, 5, 10, 20, 30, 40, 50, 60
A84	Foo Wai House, Sun Tin Wai Estate	Residential	1.5, 5, 10, 20, 30, 40, 50, 60, 70
A85	Wing Wai House, Sun Tin Wai	Residential	1.5, 5, 10, 20, 30, 40, 50, 60
A86	Yan Wai House, Sun Tin Wai	Residential	1.5, 5, 10, 20, 30, 40, 50, 60, 70
A87	Shatin Methodist College	Educational	1.5, 5, 10, 20, 30
A88	Fung Wai House, Sun Tin Wai	Residential	1.5, 5, 10, 20, 30, 40, 50, 60
A89	Shing Wai House, Sun Tin Wai	Residential	1.5, 5, 10, 20, 30, 40, 50, 60, 70
A90	Sha Tin Tau New Village	Village	1.5, 5, 10
A91	Wing Shing House, Fung Shing Court	Residential	1.5, 5, 10, 20, 30, 40, 50, 60, 70, 80, 90, 100
A92	Che Kung Temple Sports Centre	Recreational	1.5, 5, 10, 20
A93	Shek Jing House, Chun Shek Estate	Residential	1.5, 5, 10, 20, 30, 40, 50, 60, 70, 80
A94	Kwok Tak Seng Catholic Secondary School	Educational	1.5, 5, 10, 20
A95	Chun Shek Shopping Centre	Residential	1.5, 5, 10, 20
A96	104A Sha Tin Tau	Village	1.5, 5, 10
A97	Sha Tin Tau Village	Village	1.5, 5, 10
A98	Tsang Tai Uk	Village	1.5, 5, 10
A99	L Lauey	Residential	1.5, 5, 10
A100	Hin Keng Estate - Hin Wan House	Residential	1.5, 5, 10, 20, 30, 40, 50, 60, 70, 80, 90, 100, 110, 120
A101	Hin Keng Estate - Hin Kwai House	Residential	1.5, 5, 10, 20, 30, 40, 50, 60, 70, 80, 90, 100, 110, 120



PROJECT  
**IMPROVEMENT OF LION ROCK TUNNEL - INVESTIGATION**

CLIENT  
**HIGHWAYS DEPARTMENT**

CONSULTANT  
 AECOM Asia Company Ltd.  
 www.aecom.com

SUB-CONSULTANTS  
 分列工程顧問公司

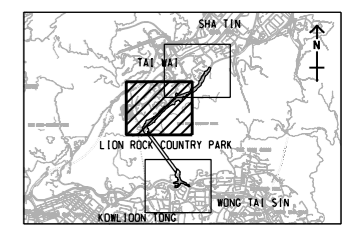
ISSUE/REVISION

NO.	DATE	DESCRIPTION	CHK.

STATUS  
 1/1/12

SCALE  
 A3 1:5000 METRES

KEY PLAN A3 1:20000



PROJECT NO.  
 60604728

AGREEMENT NO.  
 CE 48/2018(HY)

SHEET TITLE  
**LOCATION OF AIR SENSITIVE RECEIVER ON SHATIN SIDE**

SHEET NUMBER  
 60604728/R42b/FIGURE 3.1.2

**LEGEND:**

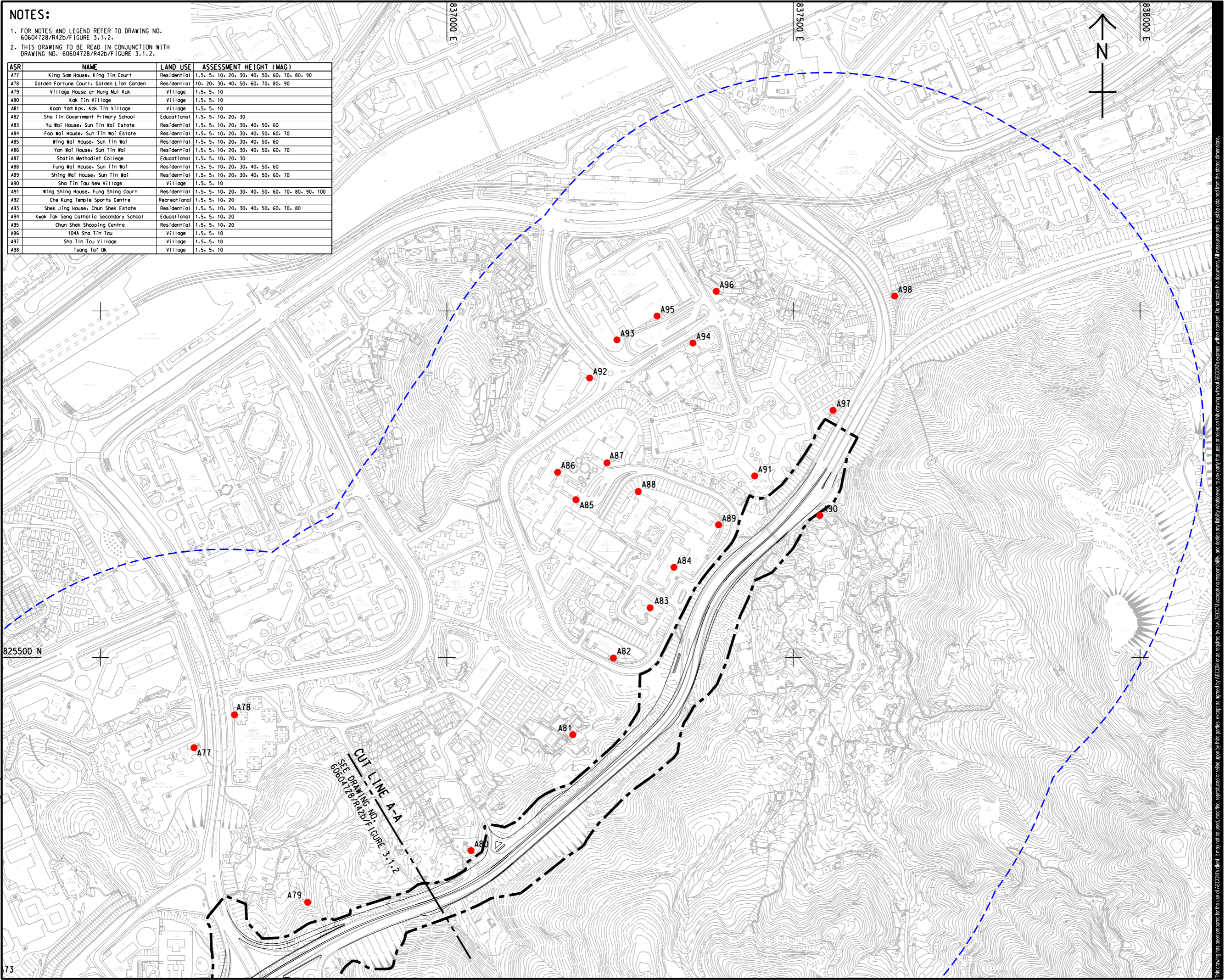
- PROJECT BOUNDARY
- 500m ASSESSMENT AREA
- AIR SENSITIVE RECEIVERS

**NOTE:**

1. THIS DRAWING TO BE READ IN CONJUNCTION WITH DRAWING NO. 60604728/R42b/FIGURE 3.1.3.

This drawing has been prepared for the use of AECOM's client. It may not be used, modified, reproduced or relied upon by third parties, except as agreed by AECOM or as required by law. AECOM accepts no responsibility, and denies any liability whatsoever, for any part, that less or relies on this drawing without AECOM's express written consent. All measurements must be obtained from the stated dimensions.

ISO A1 594mm x 841mm  
Approved:  
Checked:  
Designer:  
Project Management Initials:  
2022/6/14  
P:\PROJECTS\60604728\DRAWING\REPORT\42b\42b\_733.dgn  
73



**NOTES:**

- FOR NOTES AND LEGEND REFER TO DRAWING NO. 60604728/R42b/FIGURE 3.1.2.
- THIS DRAWING TO BE READ IN CONJUNCTION WITH DRAWING NO. 60604728/R42b/FIGURE 3.1.2.

ASR	NAME	LAND USE	ASSESSMENT HEIGHT (MAG)
A77	King Sam House, King Tin Court	Residential	1.5, 5, 10, 20, 30, 40, 50, 60, 70, 80, 90
A78	Golden Fortune Court, Golden Lion Garden	Residential	10, 20, 30, 40, 50, 60, 70, 80, 90
A79	Village House at Hung Mui Kuk	Village	1.5, 5, 10
A80	Kak Tin Village	Village	1.5, 5, 10
A81	Kaan Yam Kok, Kak Tin Village	Village	1.5, 5, 10
A82	Sha Tin Government Primary School	Educational	1.5, 5, 10, 20, 30
A83	Yu Wai House, Sun Tin Wai Estate	Residential	1.5, 5, 10, 20, 30, 40, 50, 60
A84	Foo Wai House, Sun Tin Wai Estate	Residential	1.5, 5, 10, 20, 30, 40, 50, 60, 70
A85	Wing Wai House, Sun Tin Wai	Residential	1.5, 5, 10, 20, 30, 40, 50, 60
A86	Yan Wai House, Sun Tin Wai	Residential	1.5, 5, 10, 20, 30, 40, 50, 60, 70
A87	Shatin Methodist College	Educational	1.5, 5, 10, 20, 30
A88	Fung Wai House, Sun Tin Wai	Residential	1.5, 5, 10, 20, 30, 40, 50, 60
A89	Shing Wai House, Sun Tin Wai	Residential	1.5, 5, 10, 20, 30, 40, 50, 60, 70
A90	Sha Tin Tau New Village	Village	1.5, 5, 10
A91	Wing Shing House, Fung Shing Court	Residential	1.5, 5, 10, 20, 30, 40, 50, 60, 70, 80, 90, 100
A92	Che Kung Temple Sports Centre	Recreational	1.5, 5, 10, 20
A93	Shek Jing House, Chun Shek Estate	Residential	1.5, 5, 10, 20, 30, 40, 50, 60, 70, 80
A94	Kwok Tak Seng Catholic Secondary School	Educational	1.5, 5, 10, 20
A95	Chun Shek Shopping Centre	Residential	1.5, 5, 10, 20
A96	104A Sha Tin Tau	Village	1.5, 5, 10
A97	Sha Tin Tau Village	Village	1.5, 5, 10
A98	Tsang Tai Uk	Village	1.5, 5, 10

**AECOM**

PROJECT  
60604728/R42b/FIGURE 3.1.2

**IMPROVEMENT OF LION ROCK TUNNEL - INVESTIGATION**

CLIENT  
路政署  
**HIGHWAYS DEPARTMENT**

CONSULTANT  
AECOM Asia Company Ltd.  
www.aecom.com

SUB-CONSULTANTS  
分判工程顧問公司

ISSUE/REVISION	DATE	DESCRIPTION	CHK.

STATUS

SCALE  
A3 1:5000

DIMENSION UNIT  
METRES

KEY PLAN  
A3 1:20000

PROJECT NO.  
60604728

AGREEMENT NO.  
CE 48/2018(HY)

SHEET TITLE  
LOCATION OF AIR SENSITIVE RECEIVER ON SHATIN SIDE

SHEET NUMBER  
60604728/R42b/FIGURE 3.1.3

SHEET 2 OF 2

This drawing has been prepared for the use of AECOM's client. It may not be used, modified, reproduced or relied upon by third parties, except as agreed by AECOM or as required by law. AECOM accepts no responsibility, and disclaims any liability, whatsoever, to any party, that uses or relies on this drawing without AECOM's express written consent. All measurements must be obtained from the stated dimensions.