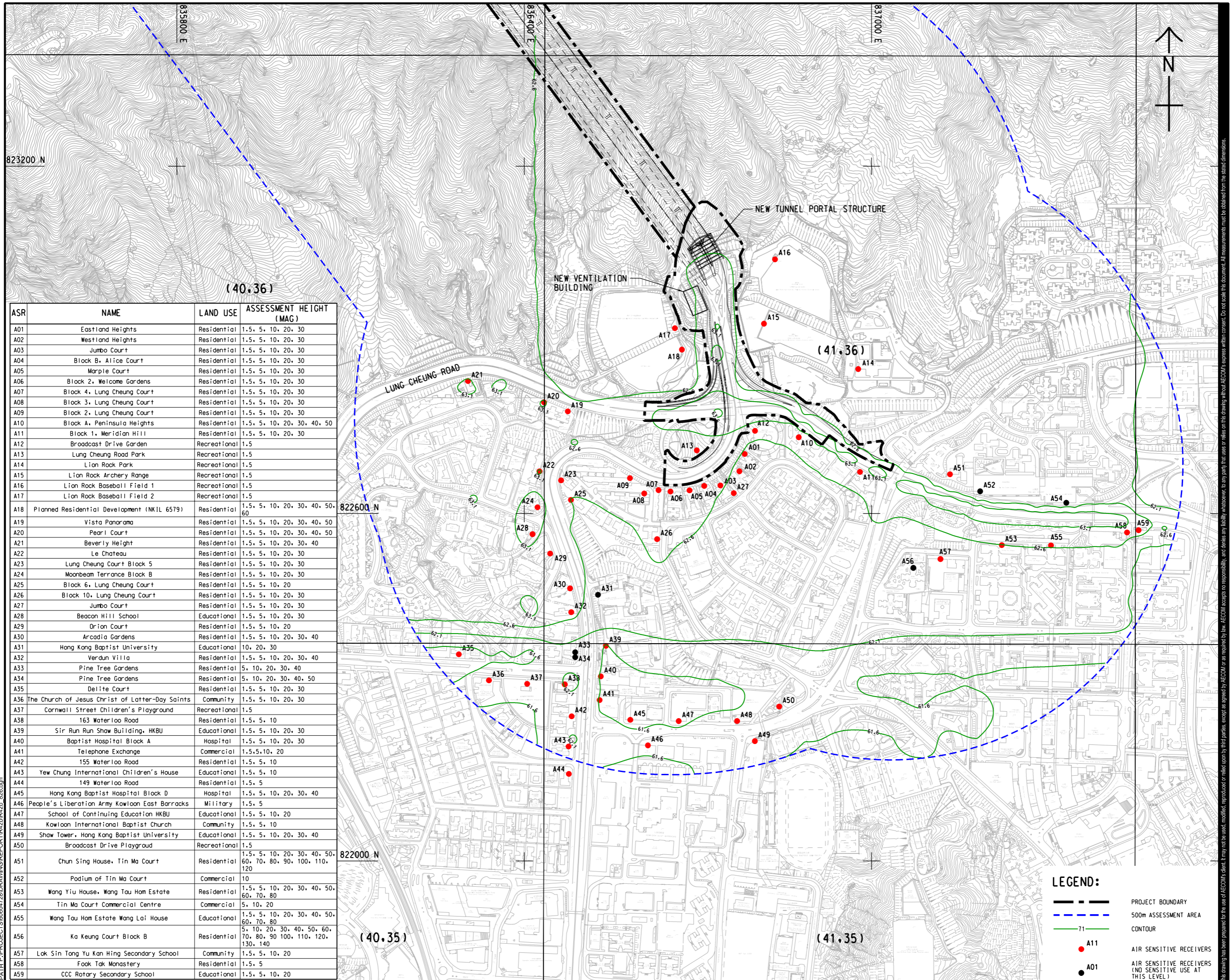


ISO A1 594mm x 841mm
 Approved:
 Checked: 823200 N
 Designer:
 Project Management Initials: (40,36)
 2022/06/23
 PATH PROJECTS/0604728/DRAWING/REPORT/1428/R42b_026.dgn



ASR	NAME	LAND USE	ASSESSMENT HEIGHT (MAG)
A01	Eastland Heights	Residential	1.5, 5, 10, 20, 30
A02	Westland Heights	Residential	1.5, 5, 10, 20, 30
A03	Jumbo Court	Residential	1.5, 5, 10, 20, 30
A04	Block B, Alice Court	Residential	1.5, 5, 10, 20, 30
A05	Marple Court	Residential	1.5, 5, 10, 20, 30
A06	Block 2, Welcome Gardens	Residential	1.5, 5, 10, 20, 30
A07	Block 4, Lung Cheung Court	Residential	1.5, 5, 10, 20, 30
A08	Block 3, Lung Cheung Court	Residential	1.5, 5, 10, 20, 30
A09	Block 2, Lung Cheung Court	Residential	1.5, 5, 10, 20, 30
A10	Block A, Peninsula Heights	Residential	1.5, 5, 10, 20, 30, 40, 50
A11	Block 1, Meridian Hill	Residential	1.5, 5, 10, 20, 30
A12	Broadcast Drive Garden	Recreational	1.5
A13	Lung Cheung Road Park	Recreational	1.5
A14	Lion Rock Park	Recreational	1.5
A15	Lion Rock Archery Range	Recreational	1.5
A16	Lion Rock Baseball Field 1	Recreational	1.5
A17	Lion Rock Baseball Field 2	Recreational	1.5
A18	Planned Residential Development (NKIL 6579)	Residential	1.5, 5, 10, 20, 30, 40, 50, 60
A19	Vista Panorama	Residential	1.5, 5, 10, 20, 30, 40, 50
A20	Pearl Court	Residential	1.5, 5, 10, 20, 30, 40, 50
A21	Beverly Height	Residential	1.5, 5, 10, 20, 30, 40
A22	Le Chateau	Residential	1.5, 5, 10, 20, 30
A23	Lung Cheung Court Block 5	Residential	1.5, 5, 10, 20, 30
A24	Moonbeam Terrace Block B	Residential	1.5, 5, 10, 20, 30
A25	Block 6, Lung Cheung Court	Residential	1.5, 5, 10, 20
A26	Block 10, Lung Cheung Court	Residential	1.5, 5, 10, 20, 30
A27	Jumbo Court	Residential	1.5, 5, 10, 20, 30
A28	Beacon Hill School	Educational	1.5, 5, 10, 20, 30
A29	Orion Court	Residential	1.5, 5, 10, 20
A30	Arcadia Gardens	Residential	1.5, 5, 10, 20, 30, 40
A31	Hong Kong Baptist University	Educational	10, 20, 30
A32	Verdun Villa	Residential	1.5, 5, 10, 20, 30, 40
A33	Pine Tree Gardens	Residential	5, 10, 20, 30, 40
A34	Pine Tree Gardens	Residential	5, 10, 20, 30, 40, 50
A35	Delite Court	Residential	1.5, 5, 10, 20, 30
A36	The Church of Jesus Christ of Latter-Day Saints	Community	1.5, 5, 10, 20, 30
A37	Cornwall Street Children's Playground	Recreational	1.5
A38	163 Waterloo Road	Residential	1.5, 5, 10
A39	Sir Run Run Shaw Building, HKBU	Educational	1.5, 5, 10, 20, 30
A40	Baptist Hospital Block A	Hospital	1.5, 5, 10, 20, 30
A41	Telephone Exchange	Commercial	1.5, 5, 10, 20
A42	155 Waterloo Road	Residential	1.5, 5, 10
A43	Yew Chung International Children's House	Educational	1.5, 5, 10
A44	149 Waterloo Road	Residential	1.5, 5
A45	Hong Kong Baptist Hospital Block D	Hospital	1.5, 5, 10, 20, 30, 40
A46	People's Liberation Army Kowloon East Barracks	Military	1.5, 5
A47	School of Continuing Education HKBU	Educational	1.5, 5, 10, 20
A48	Kowloon International Baptist Church	Community	1.5, 5, 10
A49	Shaw Tower, Hong Kong Baptist University	Educational	1.5, 5, 10, 20, 30, 40
A50	Broadcast Drive Playground	Recreational	1.5
A51	Chun Sing House, Tin Ma Court	Residential	1.5, 5, 10, 20, 30, 40, 50, 60, 70, 80, 90, 100, 110, 120
A52	Podium of Tin Ma Court	Commercial	10
A53	Wang Yiu House, Wang Tau Hom Estate	Residential	1.5, 5, 10, 20, 30, 40, 50, 60, 70, 80
A54	Tin Ma Court Commercial Centre	Commercial	5, 10, 20
A55	Wang Tau Hom Estate Wang Lai House	Educational	1.5, 5, 10, 20, 30, 40, 50, 60, 70, 80
A56	Ka Keung Court Block B	Residential	5, 10, 20, 30, 40, 50, 60, 70, 80, 90, 100, 110, 120, 130, 140
A57	Lok Sin Tong Yu Kan Hing Secondary School	Community	1.5, 5, 10, 20
A58	Fook Tak Monastery	Residential	1.5, 5
A59	CCC Rotary Secondary School	Educational	1.5, 5, 10, 20

AECOM

PROJECT
IMPROVEMENT OF LION ROCK TUNNEL - INVESTIGATION

CLIENT
路政署 HIGHWAYS DEPARTMENT

CONSULTANT
 AECOM Asia Company Ltd.
 www.aecom.com

SUB-CONSULTANTS
 分列工程顧問公司

ISSUE/REVISION

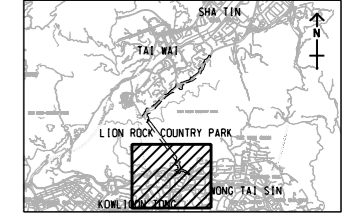
IR	DATE	DESCRIPTION	CHK.

STATUS

10/12

SCALE: A3 1:6000 DIMENSION UNIT: METRES

KEY PLAN: A3 1:200000



PROJECT NO.: 60604728 AGREEMENT NO.: CE 48/2018(HY)

SHEET TITLE: 10th HIGHEST CUMULATIVE DAILY RSP CONCENTRATION (µg/m³) at 1.5 mAG, KOWLOON (YEAR 2034)

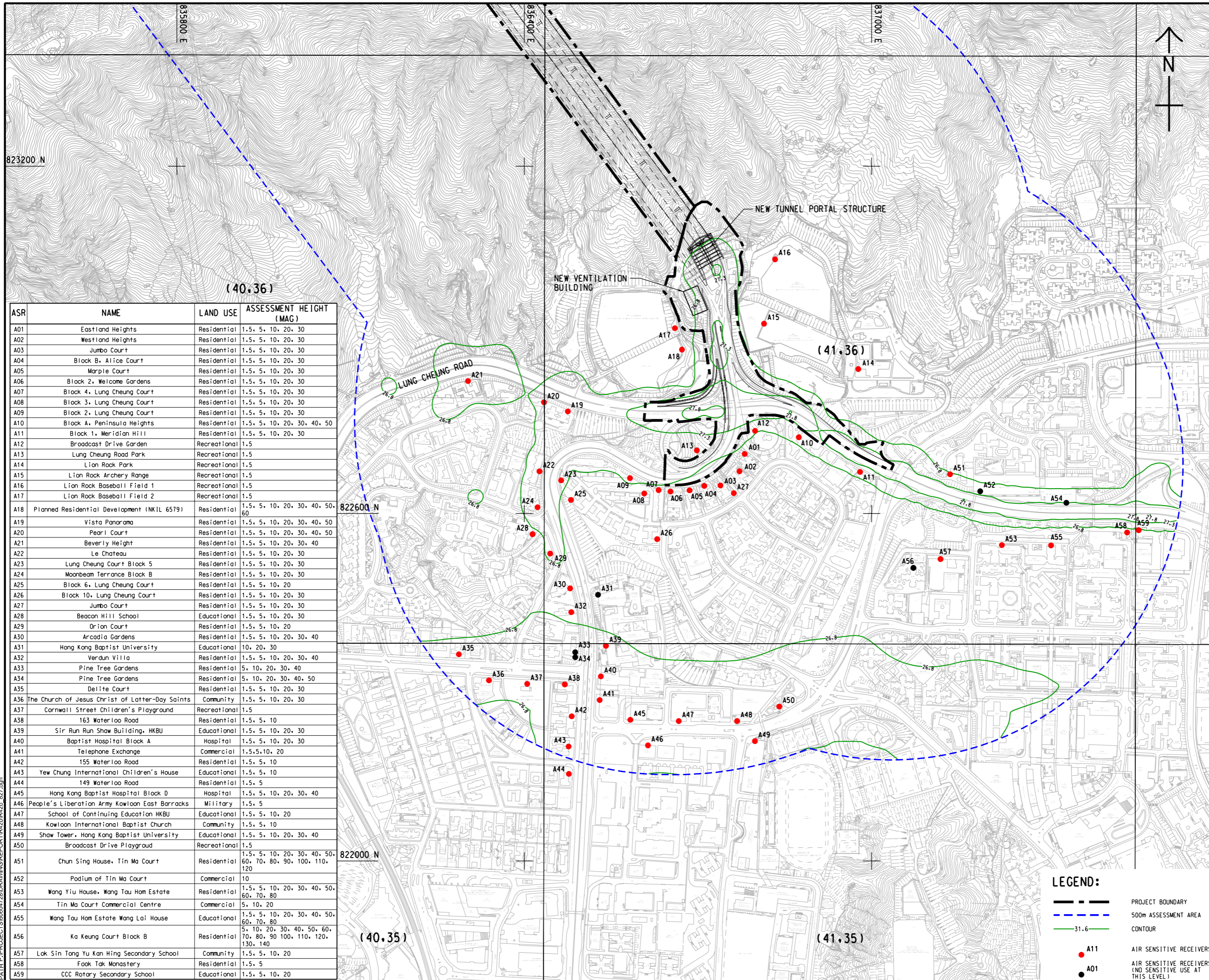
SHEET NUMBER: 60604728/R42b/FIGURE 3.26

LEGEND:

- PROJECT BOUNDARY
- - - 500m ASSESSMENT AREA
- 71 CONTOUR
- A11 AIR SENSITIVE RECEIVERS
- A01 AIR SENSITIVE RECEIVERS (NO SENSITIVE USE AT THIS LEVEL)

This drawing has been prepared for the use of AECOM's client. It may not be used, modified, reproduced or relied upon by third parties, except as agreed by AECOM or as required by law. AECOM accepts no responsibility, and disclaims any liability whatsoever, for any part, that is less or more than this drawing, without AECOM's express written consent. All measurements must be obtained from the stated dimensions.

ISO A1 594mm x 841mm
 Approved:
 Checked: 823200 N
 Designer:
 Project Management Initials:



ASR	NAME	LAND USE	ASSESSMENT HEIGHT (MAG)
A01	Eastland Heights	Residential	1.5, 5, 10, 20, 30
A02	Westland Heights	Residential	1.5, 5, 10, 20, 30
A03	Jumbo Court	Residential	1.5, 5, 10, 20, 30
A04	Block B, Alice Court	Residential	1.5, 5, 10, 20, 30
A05	Marple Court	Residential	1.5, 5, 10, 20, 30
A06	Block 2, Welcome Gardens	Residential	1.5, 5, 10, 20, 30
A07	Block 4, Lung Cheung Court	Residential	1.5, 5, 10, 20, 30
A08	Block 3, Lung Cheung Court	Residential	1.5, 5, 10, 20, 30
A09	Block 2, Lung Cheung Court	Residential	1.5, 5, 10, 20, 30
A10	Block A, Peninsula Heights	Residential	1.5, 5, 10, 20, 30, 40, 50
A11	Block 1, Meridian Hill	Residential	1.5, 5, 10, 20, 30
A12	Broadcast Drive Garden	Recreational	1.5
A13	Lung Cheung Road Park	Recreational	1.5
A14	Lion Rock Park	Recreational	1.5
A15	Lion Rock Archery Range	Recreational	1.5
A16	Lion Rock Baseball Field 1	Recreational	1.5
A17	Lion Rock Baseball Field 2	Recreational	1.5
A18	Planned Residential Development (NKIL 6579)	Residential	1.5, 5, 10, 20, 30, 40, 50, 60
A19	Vista Panorama	Residential	1.5, 5, 10, 20, 30, 40, 50
A20	Pearl Court	Residential	1.5, 5, 10, 20, 30, 40, 50
A21	Beverly Height	Residential	1.5, 5, 10, 20, 30, 40
A22	Le Chateau	Residential	1.5, 5, 10, 20, 30
A23	Lung Cheung Court Block 5	Residential	1.5, 5, 10, 20, 30
A24	Moonbeam Terrace Block B	Residential	1.5, 5, 10, 20, 30
A25	Block 6, Lung Cheung Court	Residential	1.5, 5, 10, 20
A26	Block 10, Lung Cheung Court	Residential	1.5, 5, 10, 20, 30
A27	Jumbo Court	Residential	1.5, 5, 10, 20, 30
A28	Beacon Hill School	Educational	1.5, 5, 10, 20, 30
A29	Orion Court	Residential	1.5, 5, 10, 20
A30	Arcadia Gardens	Residential	1.5, 5, 10, 20, 30, 40
A31	Hong Kong Baptist University	Educational	10, 20, 30
A32	Verdun Villa	Residential	1.5, 5, 10, 20, 30, 40
A33	Pine Tree Gardens	Residential	5, 10, 20, 30, 40
A34	Pine Tree Gardens	Residential	5, 10, 20, 30, 40, 50
A35	Delite Court	Residential	1.5, 5, 10, 20, 30
A36	The Church of Jesus Christ of Latter-Day Saints	Community	1.5, 5, 10, 20, 30
A37	Cornwall Street Children's Playground	Recreational	1.5
A38	163 Waterloo Road	Residential	1.5, 5, 10
A39	Sir Run Run Shaw Building, HKBU	Educational	1.5, 5, 10, 20, 30
A40	Baptist Hospital Block A	Hospital	1.5, 5, 10, 20, 30
A41	Telephone Exchange	Commercial	1.5, 5, 10, 20
A42	155 Waterloo Road	Residential	1.5, 5, 10
A43	Yew Chung International Children's House	Educational	1.5, 5, 10
A44	149 Waterloo Road	Residential	1.5, 5
A45	Hong Kong Baptist Hospital Block D	Hospital	1.5, 5, 10, 20, 30, 40
A46	People's Liberation Army Kowloon East Barracks	Military	1.5, 5
A47	School of Continuing Education HKBU	Educational	1.5, 5, 10, 20
A48	Kowloon International Baptist Church	Community	1.5, 5, 10
A49	Shaw Tower, Hong Kong Baptist University	Educational	1.5, 5, 10, 20, 30, 40
A50	Broadcast Drive Playground	Recreational	1.5
A51	Chun Sing House, Tin Ma Court	Residential	1.5, 5, 10, 20, 30, 40, 50, 60, 70, 80, 90, 100, 110, 120
A52	Podium of Tin Ma Court	Commercial	10
A53	Wang Yiu House, Wang Tau Hom Estate	Residential	1.5, 5, 10, 20, 30, 40, 50, 60, 70, 80
A54	Tin Ma Court Commercial Centre	Commercial	5, 10, 20
A55	Wang Tau Hom Estate Wang Lai House	Educational	1.5, 5, 10, 20, 30, 40, 50, 60, 70, 80, 90, 100, 110, 120, 130, 140
A56	Ka Keung Court Block B	Residential	1.5, 5, 10, 20, 30, 40, 50, 60, 70, 80, 90, 100, 110, 120, 130, 140
A57	Lok Sin Tong Yu Kan Hing Secondary School	Community	1.5, 5, 10, 20
A58	Fook Tak Monastery	Residential	1.5, 5
A59	CCC Rotary Secondary School	Educational	1.5, 5, 10, 20

AECOM

PROJECT
 IMPROVEMENT OF LION ROCK TUNNEL - INVESTIGATION

CLIENT
 路政署
 HIGHWAYS DEPARTMENT

CONSULTANT
 AECOM Asia Company Ltd.
 www.aecom.com

SUB-CONSULTANTS
 分列工程顧問公司

ISSUE/REVISION

IR	DATE	DESCRIPTION	CHK.

STATUS

SCALE: A3 1:6000 DIMENSION UNIT: METRES

KEY PLAN: A3 1:200000

PROJECT NO.: 60604728 AGREEMENT NO.: CE 48/2018(HY)

SHEET TITLE: CUMULATIVE ANNUAL RSP CONCENTRATION (µg/m³) AT 1.5 mAG, KOWLOON (YEAR 2034)

SHEET NUMBER: 60604728/R42b/FIGURE 3.27

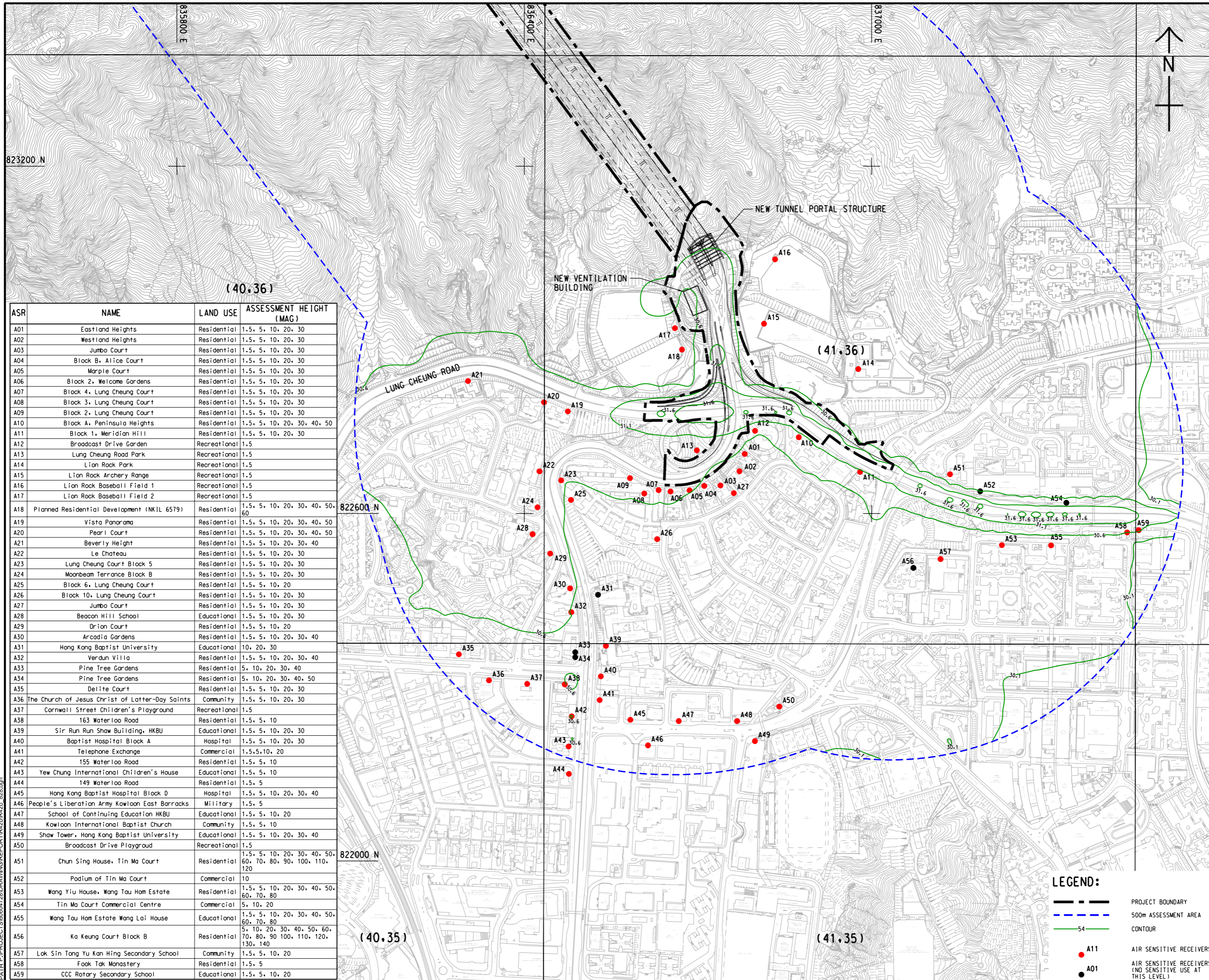
LEGEND:

- PROJECT BOUNDARY
- - - 500m ASSESSMENT AREA
- 31.6 CONTOUR
- 1.5 CONTOUR
- A11 AIR SENSITIVE RECEIVERS
- A01 AIR SENSITIVE RECEIVERS (NO SENSITIVE USE AT THIS LEVEL)

This drawing has been prepared for the use of AECOM's client. It may not be used, modified, reproduced or relied upon by third parties, except as agreed by AECOM or as required by law. AECOM accepts no responsibility, and disclaims any liability, whatsoever, for any part, that is used or relied on in this drawing without AECOM's express written consent. All measurements must be obtained from the stated dimensions.

Plot File by: ZHLZ
 PATH: P:\PROJECTS\60604728\DRAWING\REPORT\W42b\42b_827.dgn
 2022/06/23

ISO A1 594mm x 841mm
 Approved:
 Checked: 823200 N
 Designer:
 Project Management Initials:



ASR	NAME	LAND USE	ASSESSMENT HEIGHT (MAG)
A01	Eastland Heights	Residential	1.5, 5, 10, 20, 30
A02	Westland Heights	Residential	1.5, 5, 10, 20, 30
A03	Jumbo Court	Residential	1.5, 5, 10, 20, 30
A04	Block B, Alice Court	Residential	1.5, 5, 10, 20, 30
A05	Marple Court	Residential	1.5, 5, 10, 20, 30
A06	Block 2, Welcome Gardens	Residential	1.5, 5, 10, 20, 30
A07	Block 4, Lung Cheung Court	Residential	1.5, 5, 10, 20, 30
A08	Block 3, Lung Cheung Court	Residential	1.5, 5, 10, 20, 30
A09	Block 2, Lung Cheung Court	Residential	1.5, 5, 10, 20, 30
A10	Block A, Peninsula Heights	Residential	1.5, 5, 10, 20, 30, 40, 50
A11	Block 1, Meridian Hill	Residential	1.5, 5, 10, 20, 30
A12	Broadcast Drive Garden	Recreational	1.5
A13	Lung Cheung Road Park	Recreational	1.5
A14	Lion Rock Park	Recreational	1.5
A15	Lion Rock Archery Range	Recreational	1.5
A16	Lion Rock Baseball Field 1	Recreational	1.5
A17	Lion Rock Baseball Field 2	Recreational	1.5
A18	Planned Residential Development (NKIL 6579)	Residential	1.5, 5, 10, 20, 30, 40, 50, 60
A19	Vista Panorama	Residential	1.5, 5, 10, 20, 30, 40, 50
A20	Pearl Court	Residential	1.5, 5, 10, 20, 30, 40, 50
A21	Beverly Height	Residential	1.5, 5, 10, 20, 30, 40
A22	Le Chateau	Residential	1.5, 5, 10, 20, 30
A23	Lung Cheung Court Block 5	Residential	1.5, 5, 10, 20, 30
A24	Moonbeam Terrace Block B	Residential	1.5, 5, 10, 20, 30
A25	Block 6, Lung Cheung Court	Residential	1.5, 5, 10, 20
A26	Block 10, Lung Cheung Court	Residential	1.5, 5, 10, 20, 30
A27	Jumbo Court	Residential	1.5, 5, 10, 20, 30
A28	Beacon Hill School	Educational	1.5, 5, 10, 20, 30
A29	Orion Court	Residential	1.5, 5, 10, 20
A30	Arcadia Gardens	Residential	1.5, 5, 10, 20, 30, 40
A31	Hong Kong Baptist University	Educational	10, 20, 30
A32	Verdun Villa	Residential	1.5, 5, 10, 20, 30, 40
A33	Pine Tree Gardens	Residential	5, 10, 20, 30, 40
A34	Pine Tree Gardens	Residential	5, 10, 20, 30, 40, 50
A35	Delite Court	Residential	1.5, 5, 10, 20, 30
A36	The Church of Jesus Christ of Latter-Day Saints	Community	1.5, 5, 10, 20, 30
A37	Cornwall Street Children's Playground	Recreational	1.5
A38	163 Waterloo Road	Residential	1.5, 5, 10
A39	Sir Run Run Shaw Building, HKBU	Educational	1.5, 5, 10, 20, 30
A40	Baptist Hospital Block A	Hospital	1.5, 5, 10, 20, 30
A41	Telephone Exchange	Commercial	1.5, 5, 10, 20
A42	155 Waterloo Road	Residential	1.5, 5, 10
A43	Yew Chung International Children's House	Educational	1.5, 5, 10
A44	149 Waterloo Road	Residential	1.5, 5
A45	Hong Kong Baptist Hospital Block D	Hospital	1.5, 5, 10, 20, 30, 40
A46	People's Liberation Army Kowloon East Barracks	Military	1.5, 5
A47	School of Continuing Education HKBU	Educational	1.5, 5, 10, 20
A48	Kowloon International Baptist Church	Community	1.5, 5, 10
A49	Shaw Tower, Hong Kong Baptist University	Educational	1.5, 5, 10, 20, 30, 40
A50	Broadcast Drive Playground	Recreational	1.5
A51	Chun Sing House, Tin Ma Court	Residential	1.5, 5, 10, 20, 30, 40, 50, 60, 70, 80, 90, 100, 110, 120
A52	Podium of Tin Ma Court	Commercial	10
A53	Wang Yiu House, Wang Tau Hom Estate	Residential	1.5, 5, 10, 20, 30, 40, 50, 60, 70, 80
A54	Tin Ma Court Commercial Centre	Commercial	5, 10, 20
A55	Wang Tau Hom Estate Wang Lai House	Educational	1.5, 5, 10, 20, 30, 40, 50, 60, 70, 80, 90, 100, 110, 120, 130, 140
A56	Ka Keung Court Block B	Residential	1.5, 5, 10, 20, 30, 40, 50, 60, 70, 80, 90, 100, 110, 120, 130, 140
A57	Lok Sin Tong Yu Kan Hing Secondary School	Community	1.5, 5, 10, 20
A58	Fook Tak Monastery	Residential	1.5, 5
A59	CCC Rotary Secondary School	Educational	1.5, 5, 10, 20

AECOM

PROJECT
IMPROVEMENT OF LION ROCK TUNNEL - INVESTIGATION

CLIENT
路政署 HIGHWAYS DEPARTMENT

CONSULTANT
 AECOM Asia Company Ltd.
 www.aecom.com

SUB-CONSULTANTS
 分列工程顧問公司

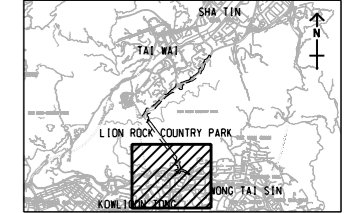
ISSUE/REVISION

IR	DATE	DESCRIPTION	CHK.

STATUS

SCALE: A3 1:6000 DIMENSION UNIT: METRES

KEY PLAN: A3 1:200000



PROJECT NO. 60604728 AGREEMENT NO. CE 48/2018(HY)

SHEET TITLE
19th HIGHEST CUMULATIVE DAILY FSP CONCENTRATION ($\mu\text{g}/\text{m}^3$) at 1.5 MAG, KOWLOON (YEAR 2034)

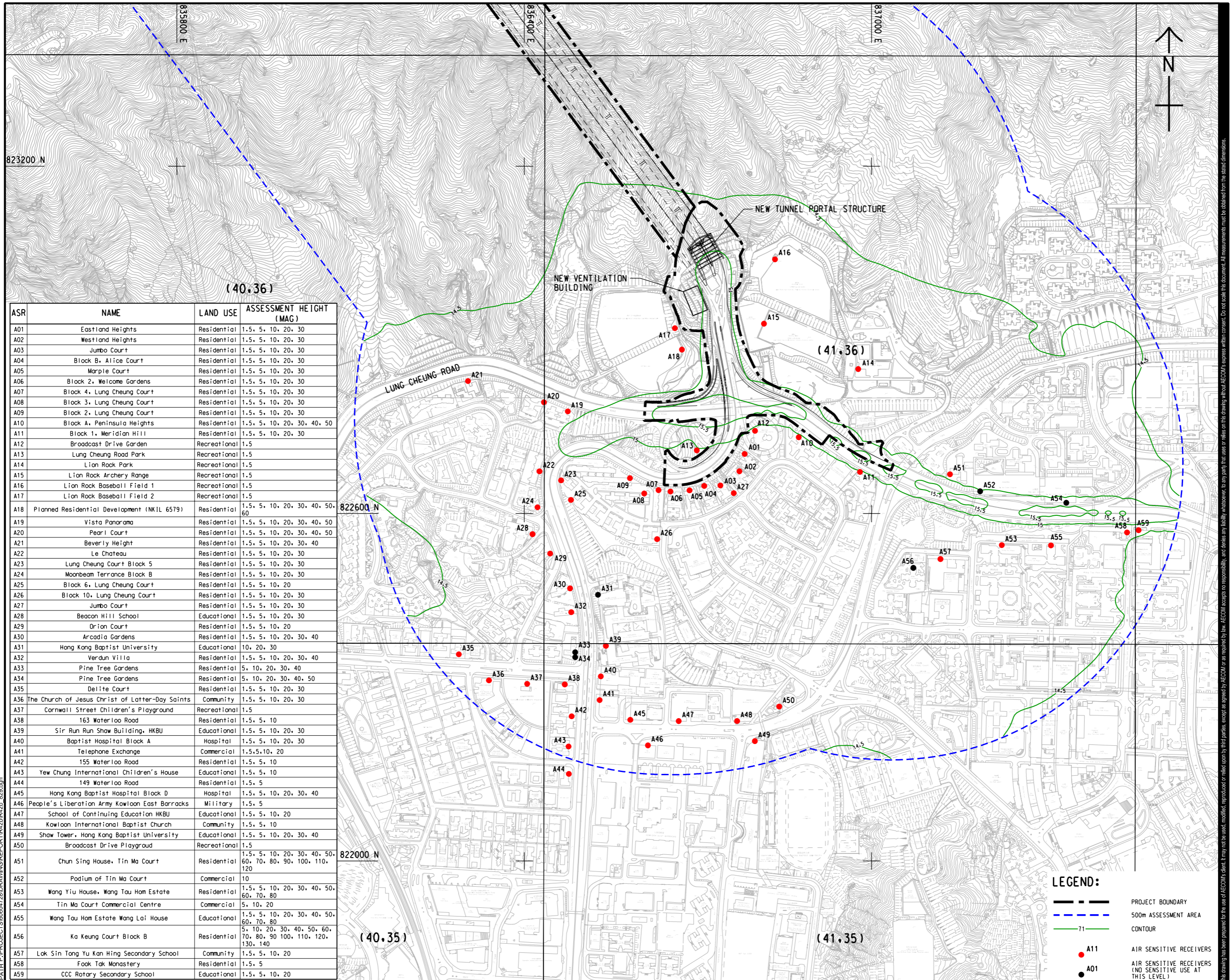
SHEET NUMBER
 60604728/R42b/FIGURE 3.28

LEGEND:

- PROJECT BOUNDARY
- - - 500m ASSESSMENT AREA
- 54 CONTOUR
- A11 AIR SENSITIVE RECEIVERS
- A01 AIR SENSITIVE RECEIVERS (NO SENSITIVE USE AT THIS LEVEL)

This drawing has been prepared for the use of AECOM's client. It may not be used, modified, reproduced or relied upon by third parties, except as agreed by AECOM or as required by law. AECOM accepts no responsibility, and disclaims any liability whatsoever, for any part, that is used or relied on in this drawing without AECOM's express written consent. All measurements must be obtained from the stated dimensions.

ISO A1 594mm x 841mm
 Approved:
 Checked: 823200 N
 Designer:
 Project Management Initials: (40,36)
 2022/06/22
 File Path: \\PROJECTS\60604728\DRAWING\REPORT\1622042b_028.dgn
 Plot File by: HEAX



ASR	NAME	LAND USE	ASSESSMENT HEIGHT (MAG)
A01	Eastland Heights	Residential	1.5, 5, 10, 20, 30
A02	Westland Heights	Residential	1.5, 5, 10, 20, 30
A03	Jumbo Court	Residential	1.5, 5, 10, 20, 30
A04	Block B, Alice Court	Residential	1.5, 5, 10, 20, 30
A05	Marple Court	Residential	1.5, 5, 10, 20, 30
A06	Block 2, Welcome Gardens	Residential	1.5, 5, 10, 20, 30
A07	Block 4, Lung Cheung Court	Residential	1.5, 5, 10, 20, 30
A08	Block 3, Lung Cheung Court	Residential	1.5, 5, 10, 20, 30
A09	Block 2, Lung Cheung Court	Residential	1.5, 5, 10, 20, 30
A10	Block A, Peninsula Heights	Residential	1.5, 5, 10, 20, 30, 40, 50
A11	Block 1, Meridian Hill	Residential	1.5, 5, 10, 20, 30
A12	Broadcast Drive Garden	Recreational	1.5
A13	Lung Cheung Road Park	Recreational	1.5
A14	Lion Rock Park	Recreational	1.5
A15	Lion Rock Archery Range	Recreational	1.5
A16	Lion Rock Baseball Field 1	Recreational	1.5
A17	Lion Rock Baseball Field 2	Recreational	1.5
A18	Planned Residential Development (NKIL 6579)	Residential	1.5, 5, 10, 20, 30, 40, 50, 60
A19	Vista Panorama	Residential	1.5, 5, 10, 20, 30, 40, 50
A20	Pearl Court	Residential	1.5, 5, 10, 20, 30, 40, 50
A21	Beverly Height	Residential	1.5, 5, 10, 20, 30, 40
A22	Le Chateau	Residential	1.5, 5, 10, 20, 30
A23	Lung Cheung Court Block 5	Residential	1.5, 5, 10, 20, 30
A24	Moonbeam Terrace Block B	Residential	1.5, 5, 10, 20, 30
A25	Block 6, Lung Cheung Court	Residential	1.5, 5, 10, 20
A26	Block 10, Lung Cheung Court	Residential	1.5, 5, 10, 20, 30
A27	Jumbo Court	Residential	1.5, 5, 10, 20, 30
A28	Beacon Hill School	Educational	1.5, 5, 10, 20, 30
A29	Orion Court	Residential	1.5, 5, 10, 20
A30	Arcadia Gardens	Residential	1.5, 5, 10, 20, 30, 40
A31	Hong Kong Baptist University	Educational	10, 20, 30
A32	Verdun Villa	Residential	1.5, 5, 10, 20, 30, 40
A33	Pine Tree Gardens	Residential	5, 10, 20, 30, 40
A34	Pine Tree Gardens	Residential	5, 10, 20, 30, 40, 50
A35	Delite Court	Residential	1.5, 5, 10, 20, 30
A36	The Church of Jesus Christ of Latter-Day Saints	Community	1.5, 5, 10, 20, 30
A37	Cornwall Street Children's Playground	Recreational	1.5
A38	163 Waterloo Road	Residential	1.5, 5, 10
A39	Sir Run Run Shaw Building, HKBU	Educational	1.5, 5, 10, 20, 30
A40	Baptist Hospital Block A	Hospital	1.5, 5, 10, 20, 30
A41	Telephone Exchange	Commercial	1.5, 5, 10, 20
A42	155 Waterloo Road	Residential	1.5, 5, 10
A43	Yew Chung International Children's House	Educational	1.5, 5, 10
A44	149 Waterloo Road	Residential	1.5, 5
A45	Hong Kong Baptist Hospital Block D	Hospital	1.5, 5, 10, 20, 30, 40
A46	People's Liberation Army Kowloon East Barracks	Military	1.5, 5
A47	School of Continuing Education HKBU	Educational	1.5, 5, 10, 20
A48	Kowloon International Baptist Church	Community	1.5, 5, 10
A49	Shaw Tower, Hong Kong Baptist University	Educational	1.5, 5, 10, 20, 30, 40
A50	Broadcast Drive Playground	Recreational	1.5
A51	Chun Sing House, Tin Ma Court	Residential	1.5, 5, 10, 20, 30, 40, 50, 60, 70, 80, 90, 100, 110, 120
A52	Podium of Tin Ma Court	Commercial	10
A53	Wang Yiu House, Wang Tau Hom Estate	Residential	1.5, 5, 10, 20, 30, 40, 50, 60, 70, 80
A54	Tin Ma Court Commercial Centre	Commercial	5, 10, 20
A55	Wang Tau Hom Estate Wang Lai House	Educational	1.5, 5, 10, 20, 30, 40, 50, 60, 70, 80, 90, 100, 110, 120, 130, 140
A56	Ka Keung Court Block B	Residential	1.5, 5, 10, 20, 30, 40, 50, 60, 70, 80, 90, 100, 110, 120, 130, 140
A57	Lok Sin Tong Yu Kan Hing Secondary School	Community	1.5, 5, 10, 20
A58	Fook Tak Monastery	Residential	1.5, 5
A59	CCC Rotary Secondary School	Educational	1.5, 5, 10, 20

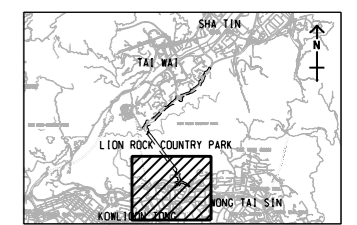
ISSUE/REVISION

IR	DATE	DESCRIPTION	CHK.

STATUS
 0/0/0

SCALE: A3 1:6000
 DIMENSION UNIT: METRES

KEY PLAN: A3 1:200000



PROJECT NO.: 60604728
 AGREEMENT NO.: CE 48/2018(HY)

SHEET TITLE
CUMULATIVE ANNUAL FSP CONCENTRATION (µg/m³) AT 1.5 mAG, KOWLOON (YEAR 2034)

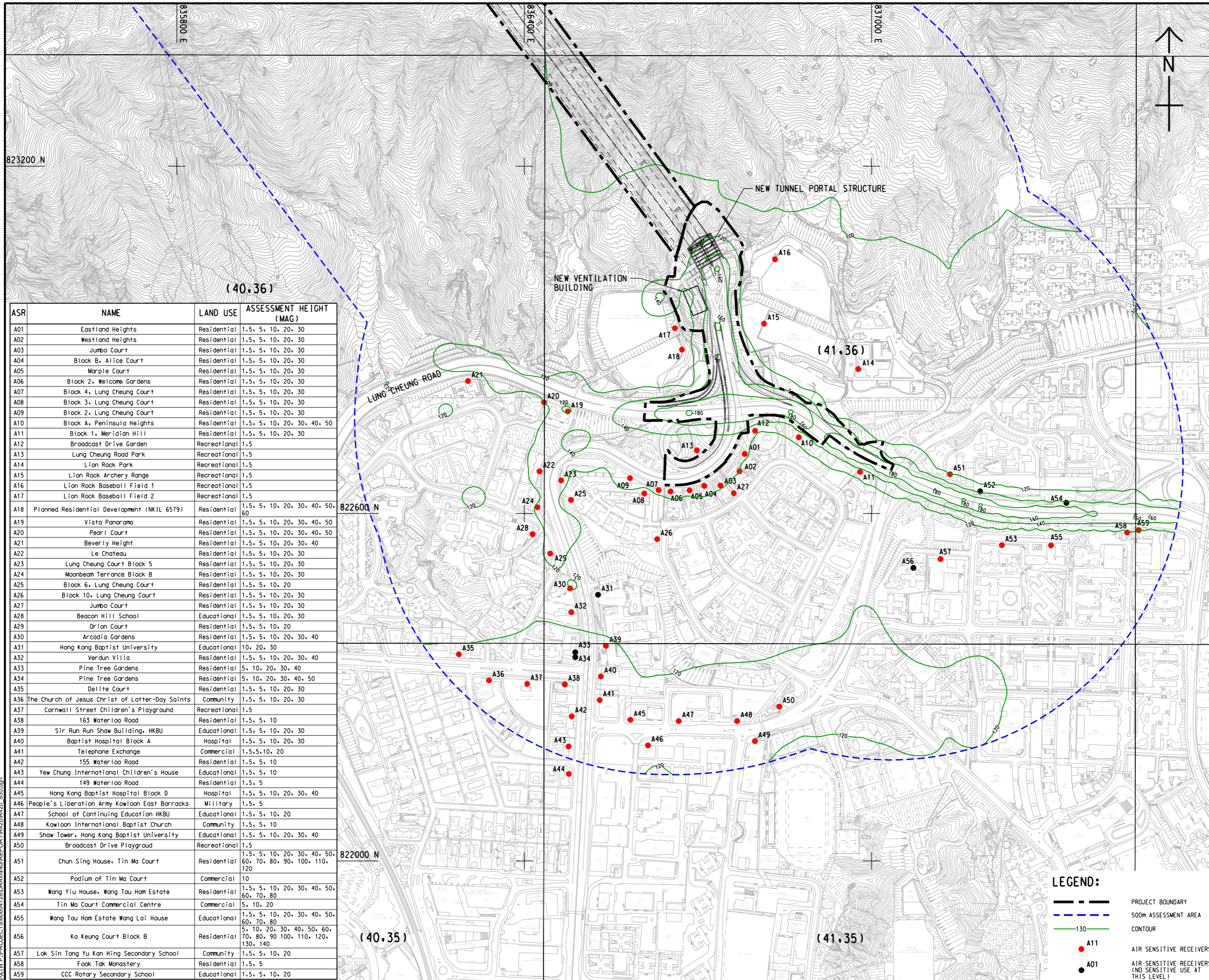
SHEET NUMBER
 60604728/R42b/FIGURE 3.29

LEGEND:

- PROJECT BOUNDARY
- 500m ASSESSMENT AREA
- CONTOUR
- A11 AIR SENSITIVE RECEIVERS
- A01 AIR SENSITIVE RECEIVERS (NO SENSITIVE USE AT THIS LEVEL)

This drawing has been prepared for the use of AECOM's client. It may not be used, modified, reproduced or relied upon by third parties, except as agreed by AECOM or as required by law. AECOM accepts no responsibility, and disclaims any liability whatsoever, for any part, that is less or more than this drawing, without AECOM's express written consent. All measurements must be obtained from the stated dimensions.

ISO A1 594mm x 841mm
 Approved:
 Checked: 823200 N
 Designer:
 Project Management Initials: (40,36)
 2022/06/24
 File by: WANGDF
 PATH: P:\PROJECTS\6064728\DRAWING\REPORT\192018\42b_830.dgn



ASR	NAME	LAND USE	ASSESSMENT HEIGHT (MAG)
A01	Eastland Heights	Residential	1.5, 5, 10, 20, 30
A02	Westland Heights	Residential	1.5, 5, 10, 20, 30
A03	Jumbo Court	Residential	1.5, 5, 10, 20, 30
A04	Block B, Alice Court	Residential	1.5, 5, 10, 20, 30
A05	Marple Court	Residential	1.5, 5, 10, 20, 30
A06	Block 2, Welcome Gardens	Residential	1.5, 5, 10, 20, 30
A07	Block 4, Lung Cheung Court	Residential	1.5, 5, 10, 20, 30
A08	Block 3, Lung Cheung Court	Residential	1.5, 5, 10, 20, 30
A09	Block 2, Lung Cheung Court	Residential	1.5, 5, 10, 20, 30
A10	Block A, Peninsula Heights	Residential	1.5, 5, 10, 20, 30, 40, 50
A11	Block 1, Meridian Hill	Residential	1.5, 5, 10, 20, 30
A12	Broadcast Drive Garden	Recreational	1.5
A13	Lung Cheung Road Park	Recreational	1.5
A14	Lion Rock Park	Recreational	1.5
A15	Lion Rock Archery Range	Recreational	1.5
A16	Lion Rock Baseball Field 1	Recreational	1.5
A17	Lion Rock Baseball Field 2	Recreational	1.5
A18	Planned Residential Development (NKIL 6579)	Residential	1.5, 5, 10, 20, 30, 40, 50, 60
A19	Vista Panorama	Residential	1.5, 5, 10, 20, 30, 40, 50
A20	Pearl Court	Residential	1.5, 5, 10, 20, 30, 40, 50
A21	Beverly Height	Residential	1.5, 5, 10, 20, 30, 40
A22	Le Chateau	Residential	1.5, 5, 10, 20, 30
A23	Lung Cheung Court Block 5	Residential	1.5, 5, 10, 20, 30
A24	Moonbeam Terrace Block B	Residential	1.5, 5, 10, 20, 30
A25	Block 6, Lung Cheung Court	Residential	1.5, 5, 10, 20
A26	Block 10, Lung Cheung Court	Residential	1.5, 5, 10, 20, 30
A27	Jumbo Court	Residential	1.5, 5, 10, 20, 30
A28	Beacon Hill School	Educational	1.5, 5, 10, 20, 30
A29	Orion Court	Residential	1.5, 5, 10, 20
A30	Arcadia Gardens	Residential	1.5, 5, 10, 20, 30, 40
A31	Hong Kong Baptist University	Educational	10, 20, 30
A32	Verdun Villa	Residential	1.5, 5, 10, 20, 30, 40
A33	Pine Tree Gardens	Residential	5, 10, 20, 30, 40
A34	Pine Tree Gardens	Residential	5, 10, 20, 30, 40, 50
A35	Delite Court	Residential	1.5, 5, 10, 20, 30
A36	The Church of Jesus Christ of Latter-Day Saints	Community	1.5, 5, 10, 20, 30
A37	Cornwall Street Children's Playground	Recreational	1.5
A38	163 Waterloo Road	Residential	1.5, 5, 10
A39	Sir Run Run Shaw Building, HKBU	Educational	1.5, 5, 10, 20, 30
A40	Baptist Hospital Block A	Hospital	1.5, 5, 10, 20, 30
A41	Telephone Exchange	Commercial	1.5, 5, 10, 20
A42	155 Waterloo Road	Residential	1.5, 5, 10
A43	Yew Chung International Children's House	Educational	1.5, 5, 10
A44	149 Waterloo Road	Residential	1.5, 5
A45	Hong Kong Baptist Hospital Block D	Hospital	1.5, 5, 10, 20, 30, 40
A46	People's Liberation Army Kowloon East Barracks	Military	1.5, 5
A47	School of Continuing Education HKBU	Educational	1.5, 5, 10, 20
A48	Kowloon International Baptist Church	Community	1.5, 5, 10
A49	Shaw Tower, Hong Kong Baptist University	Educational	1.5, 5, 10, 20, 30, 40
A50	Broadcast Drive Playground	Recreational	1.5
A51	Chun Sing House, Tin Ma Court	Residential	1.5, 5, 10, 20, 30, 40, 50, 60, 70, 80, 90, 100, 110, 120
A52	Podium of Tin Ma Court	Commercial	10
A53	Wang Yiu House, Wang Tau Hom Estate	Residential	1.5, 5, 10, 20, 30, 40, 50, 60, 70, 80
A54	Tin Ma Court Commercial Centre	Commercial	5, 10, 20
A55	Wang Tau Hom Estate Wang Lai House	Educational	1.5, 5, 10, 20, 30, 40, 50, 60, 70, 80
A56	Ka Keung Court Block B	Residential	5, 10, 20, 30, 40, 50, 60, 70, 80, 90, 100, 110, 120, 130, 140
A57	Lok Sin Tong Yu Kan Hing Secondary School	Community	1.5, 5, 10, 20
A58	Fook Tak Monastery	Residential	1.5, 5
A59	CCC Rotary Secondary School	Educational	1.5, 5, 10, 20

AECOM

PROJECT
 IMPROVEMENT OF LION ROCK TUNNEL - INVESTIGATION

CLIENT
 路政署
 HIGHWAYS DEPARTMENT

CONSULTANT
 AECOM Asia Company Ltd.
 www.aecom.com

SUB-CONSULTANTS
 分列工程顧問公司

ISSUE/REVISION

IR	DATE	DESCRIPTION	CHK.

STATUS

SCALE: A3 1:6000 DIMENSION UNIT: METRES

KEY PLAN: A3 1:200000

PROJECT NO.: 60604728 AGREEMENT NO.: CE 48/2018(HY)

SHEET TITLE: 19th HIGHEST CUMULATIVE HOURLY NO₂ CONCENTRATION (µg/m³) AT 1.5 mAG, KOWLOON (YEAR 2034)

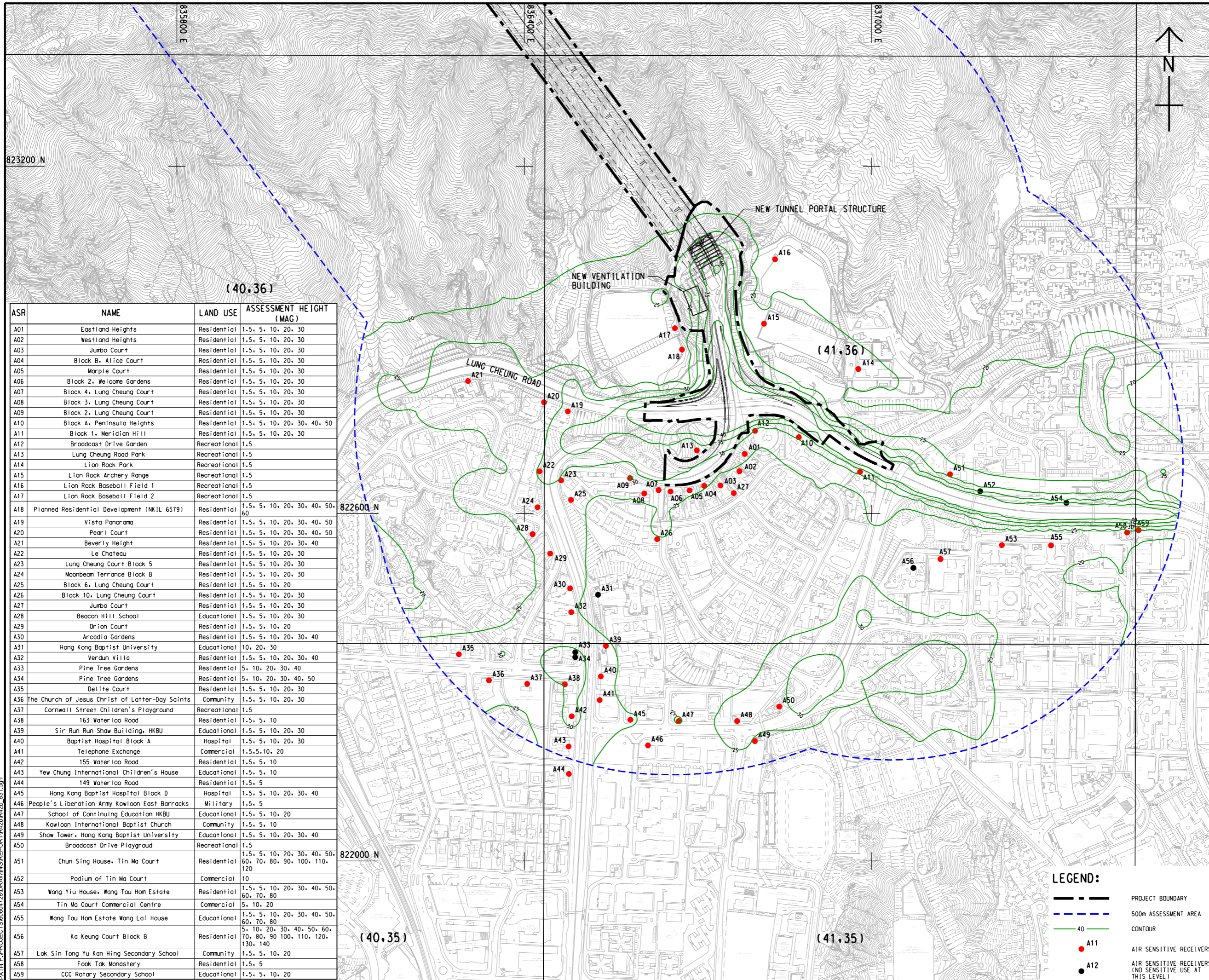
SHEET NUMBER: 60604728/R42b/FIGURE 3.30

LEGEND:

- PROJECT BOUNDARY
- 500m ASSESSMENT AREA
- CONTOUR
- A11
- A01
- AIR SENSITIVE RECEIVERS
- AIR SENSITIVE RECEIVERS (NO SENSITIVE USE AT THIS LEVEL)

This drawing has been prepared for the use of AECOM's client. It may not be used, modified, reproduced or relied upon by third parties, except as agreed by AECOM or as required by law. AECOM accepts no responsibility, and disclaims any liability, whatsoever, for any part, that is used or relied on in this drawing without AECOM's express written consent. All measurements must be obtained from the stated dimensions.

ISO A1 594mm x 841mm
 Approved:
 Checked: 823200 N
 Designer:
 Project Management Initials: (40,36)
 2022/06/23
 PATH PROJECTS/0604728/DRAWING/REPORT/1625042b_831.dgn



ASR	NAME	LAND USE	ASSESSMENT HEIGHT (MAG)
A01	Eastland Heights	Residential	1.5, 5, 10, 20, 30
A02	Westland Heights	Residential	1.5, 5, 10, 20, 30
A03	Jumbo Court	Residential	1.5, 5, 10, 20, 30
A04	Block B, Alice Court	Residential	1.5, 5, 10, 20, 30
A05	Marple Court	Residential	1.5, 5, 10, 20, 30
A06	Block 2, Welcome Gardens	Residential	1.5, 5, 10, 20, 30
A07	Block 4, Lung Cheung Court	Residential	1.5, 5, 10, 20, 30
A08	Block 3, Lung Cheung Court	Residential	1.5, 5, 10, 20, 30
A09	Block 2, Lung Cheung Court	Residential	1.5, 5, 10, 20, 30
A10	Block A, Peninsula Heights	Residential	1.5, 5, 10, 20, 30, 40, 50
A11	Block 1, Meridian Hill	Residential	1.5, 5, 10, 20, 30
A12	Broadcast Drive Garden	Recreational	1.5
A13	Lung Cheung Road Park	Recreational	1.5
A14	Lion Rock Park	Recreational	1.5
A15	Lion Rock Archery Range	Recreational	1.5
A16	Lion Rock Baseball Field 1	Recreational	1.5
A17	Lion Rock Baseball Field 2	Recreational	1.5
A18	Planned Residential Development (NKIL 6579)	Residential	1.5, 5, 10, 20, 30, 40, 50, 60
A19	Vista Panorama	Residential	1.5, 5, 10, 20, 30, 40, 50
A20	Pearl Court	Residential	1.5, 5, 10, 20, 30, 40, 50
A21	Beverly Height	Residential	1.5, 5, 10, 20, 30, 40
A22	Le Chateau	Residential	1.5, 5, 10, 20, 30
A23	Lung Cheung Court Block 5	Residential	1.5, 5, 10, 20, 30
A24	Moonbeam Terrace Block B	Residential	1.5, 5, 10, 20, 30
A25	Block 6, Lung Cheung Court	Residential	1.5, 5, 10, 20
A26	Block 10, Lung Cheung Court	Residential	1.5, 5, 10, 20, 30
A27	Jumbo Court	Residential	1.5, 5, 10, 20, 30
A28	Beacon Hill School	Educational	1.5, 5, 10, 20, 30
A29	Orion Court	Residential	1.5, 5, 10, 20
A30	Arcadia Gardens	Residential	1.5, 5, 10, 20, 30, 40
A31	Hong Kong Baptist University	Educational	10, 20, 30
A32	Verdun Villa	Residential	1.5, 5, 10, 20, 30, 40
A33	Pine Tree Gardens	Residential	5, 10, 20, 30, 40
A34	Pine Tree Gardens	Residential	5, 10, 20, 30, 40, 50
A35	Delite Court	Residential	1.5, 5, 10, 20, 30
A36	The Church of Jesus Christ of Latter-Day Saints	Community	1.5, 5, 10, 20, 30
A37	Cornwall Street Children's Playground	Recreational	1.5
A38	163 Waterloo Road	Residential	1.5, 5, 10
A39	Sir Run Run Shaw Building, HKBU	Educational	1.5, 5, 10, 20, 30
A40	Baptist Hospital Block A	Hospital	1.5, 5, 10, 20, 30
A41	Telephone Exchange	Commercial	1.5, 5, 10, 20
A42	155 Waterloo Road	Residential	1.5, 5, 10
A43	Yew Chung International Children's House	Educational	1.5, 5, 10
A44	149 Waterloo Road	Residential	1.5, 5
A45	Hong Kong Baptist Hospital Block D	Hospital	1.5, 5, 10, 20, 30, 40
A46	People's Liberation Army Kowloon East Barracks	Military	1.5, 5
A47	School of Continuing Education HKBU	Educational	1.5, 5, 10, 20
A48	Kowloon International Baptist Church	Community	1.5, 5, 10
A49	Shaw Tower, Hong Kong Baptist University	Educational	1.5, 5, 10, 20, 30, 40
A50	Broadcast Drive Playground	Recreational	1.5
A51	Chun Sing House, Tin Ma Court	Residential	1.5, 5, 10, 20, 30, 40, 50, 60, 70, 80, 90, 100, 110, 120
A52	Podium of Tin Ma Court	Commercial	10
A53	Wang Yiu House, Wang Tau Hom Estate	Residential	1.5, 5, 10, 20, 30, 40, 50, 60, 70, 80
A54	Tin Ma Court Commercial Centre	Commercial	5, 10, 20
A55	Wang Tau Hom Estate Wang Lai House	Educational	1.5, 5, 10, 20, 30, 40, 50, 60, 70, 80
A56	Ka Keung Court Block B	Residential	5, 10, 20, 30, 40, 50, 60, 70, 80, 90, 100, 110, 120, 130, 140
A57	Lok Sin Tong Yu Kan Hing Secondary School	Community	1.5, 5, 10, 20
A58	Fook Tak Monastery	Residential	1.5, 5
A59	CCC Rotary Secondary School	Educational	1.5, 5, 10, 20



PROJECT
IMPROVEMENT OF LION ROCK TUNNEL - INVESTIGATION



CONSULTANT
 AECOM Asia Company Ltd.
 www.aecom.com

SUB-CONSULTANTS
 分列工程顧問公司

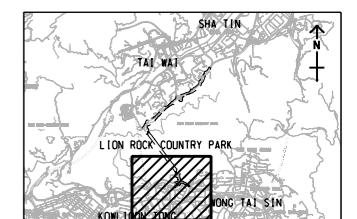
ISSUE/REVISION

IR	DATE	DESCRIPTION	CHK.

STATUS

SCALE: A3 1:6000
 DIMENSION UNIT: METRES

KEY PLAN: A3 1:200000



PROJECT NO.: 60604728
 AGREEMENT NO.: CE 48/2018(HY)

SHEET TITLE
CUMULATIVE ANNUAL NO₂ CONCENTRATION (µg/m³) at 1.5 mag, KOWLOON (YEAR 2034)

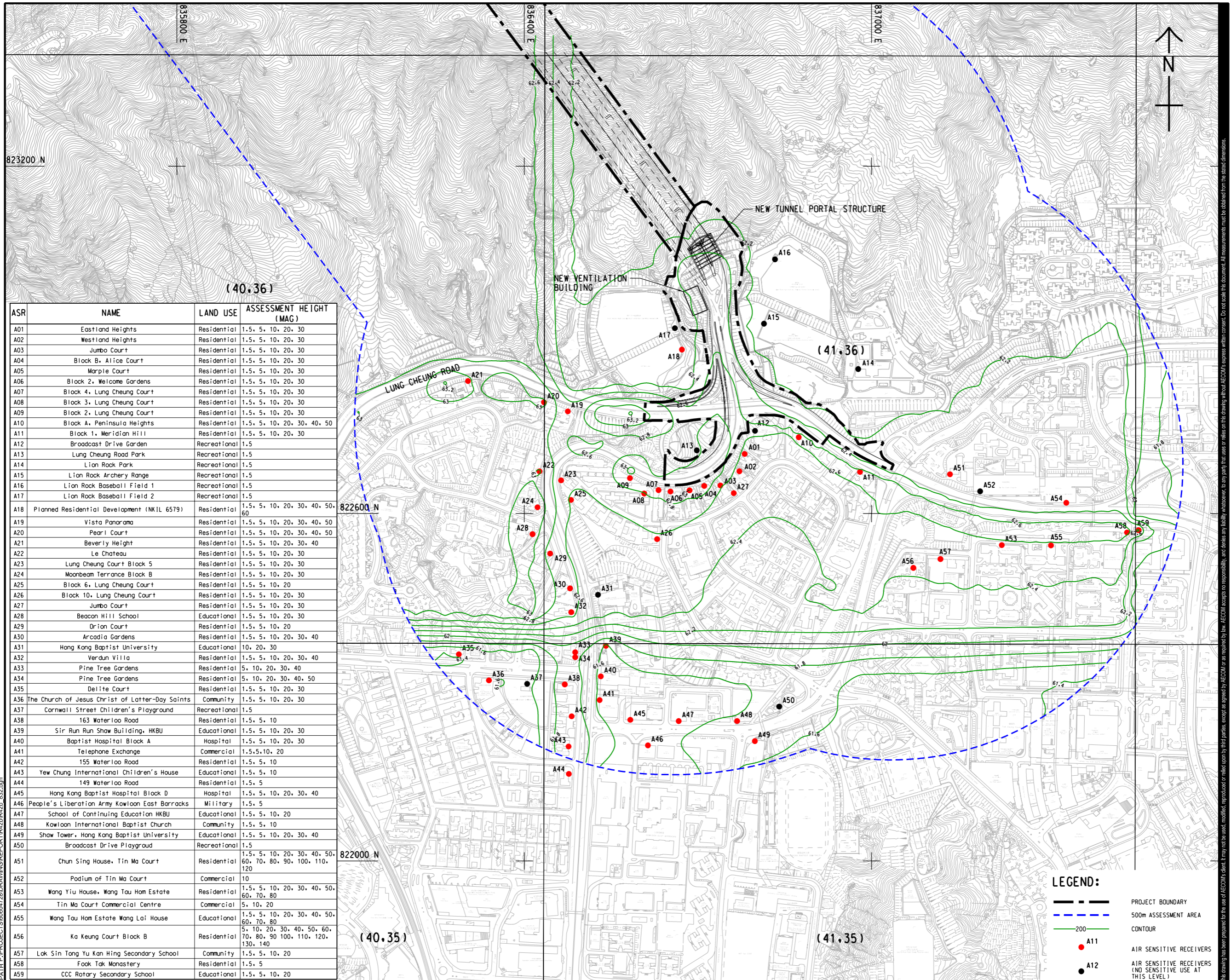
SHEET NUMBER
 60604728/R42b/FIGURE 3.31

LEGEND:

- PROJECT BOUNDARY
- 500m ASSESSMENT AREA
- 40 CONTOUR
- A11 AIR SENSITIVE RECEIVERS
- A12 AIR SENSITIVE RECEIVERS (NO SENSITIVE USE AT THIS LEVEL)

This drawing has been prepared for the use of AECOM's client. It may not be used, modified, reproduced or relied upon by third parties, except as agreed by AECOM or as required by law. AECOM accepts no responsibility, and disclaims any liability whatsoever, for any part, that is used or relied on in this drawing without AECOM's express written consent. All measurements must be obtained from the stated dimensions.

ISO A1 594mm x 841mm
 Approved:
 Checked: 823200 N
 Designer:
 Project Management Initials: (40,36)
 2022/06/23
 PATH PROJECTS/0604728/DRAWING/REPORT/42b/42b_032.dgn



ASR	NAME	LAND USE	ASSESSMENT HEIGHT (MAG)
A01	Eastland Heights	Residential	1.5, 5, 10, 20, 30
A02	Westland Heights	Residential	1.5, 5, 10, 20, 30
A03	Jumbo Court	Residential	1.5, 5, 10, 20, 30
A04	Block B, Alice Court	Residential	1.5, 5, 10, 20, 30
A05	Marple Court	Residential	1.5, 5, 10, 20, 30
A06	Block 2, Welcome Gardens	Residential	1.5, 5, 10, 20, 30
A07	Block 4, Lung Cheung Court	Residential	1.5, 5, 10, 20, 30
A08	Block 3, Lung Cheung Court	Residential	1.5, 5, 10, 20, 30
A09	Block 2, Lung Cheung Court	Residential	1.5, 5, 10, 20, 30
A10	Block A, Peninsula Heights	Residential	1.5, 5, 10, 20, 30, 40, 50
A11	Block 1, Meridian Hill	Residential	1.5, 5, 10, 20, 30
A12	Broadcast Drive Garden	Recreational	1.5
A13	Lung Cheung Road Park	Recreational	1.5
A14	Lion Rock Park	Recreational	1.5
A15	Lion Rock Archery Range	Recreational	1.5
A16	Lion Rock Baseball Field 1	Recreational	1.5
A17	Lion Rock Baseball Field 2	Recreational	1.5
A18	Planned Residential Development (NKIL 6579)	Residential	1.5, 5, 10, 20, 30, 40, 50, 60
A19	Vista Panorama	Residential	1.5, 5, 10, 20, 30, 40, 50
A20	Pearl Court	Residential	1.5, 5, 10, 20, 30, 40, 50
A21	Beverly Height	Residential	1.5, 5, 10, 20, 30, 40
A22	Le Chateau	Residential	1.5, 5, 10, 20, 30
A23	Lung Cheung Court Block 5	Residential	1.5, 5, 10, 20, 30
A24	Moonbeam Terrace Block B	Residential	1.5, 5, 10, 20, 30
A25	Block 6, Lung Cheung Court	Residential	1.5, 5, 10, 20
A26	Block 10, Lung Cheung Court	Residential	1.5, 5, 10, 20, 30
A27	Jumbo Court	Residential	1.5, 5, 10, 20, 30
A28	Beacon Hill School	Educational	1.5, 5, 10, 20, 30
A29	Orion Court	Residential	1.5, 5, 10, 20
A30	Arcadia Gardens	Residential	1.5, 5, 10, 20, 30, 40
A31	Hong Kong Baptist University	Educational	10, 20, 30
A32	Verdun Villa	Residential	1.5, 5, 10, 20, 30, 40
A33	Pine Tree Gardens	Residential	5, 10, 20, 30, 40
A34	Pine Tree Gardens	Residential	5, 10, 20, 30, 40, 50
A35	Delite Court	Residential	1.5, 5, 10, 20, 30
A36	The Church of Jesus Christ of Latter-Day Saints	Community	1.5, 5, 10, 20, 30
A37	Cornwall Street Children's Playground	Recreational	1.5
A38	163 Waterloo Road	Residential	1.5, 5, 10
A39	Sir Run Run Shaw Building, HKBU	Educational	1.5, 5, 10, 20, 30
A40	Baptist Hospital Block A	Hospital	1.5, 5, 10, 20, 30
A41	Telephone Exchange	Commercial	1.5, 5, 10, 20
A42	155 Waterloo Road	Residential	1.5, 5, 10
A43	Yew Chung International Children's House	Educational	1.5, 5, 10
A44	149 Waterloo Road	Residential	1.5, 5
A45	Hong Kong Baptist Hospital Block D	Hospital	1.5, 5, 10, 20, 30, 40
A46	People's Liberation Army Kowloon East Barracks	Military	1.5, 5
A47	School of Continuing Education HKBU	Educational	1.5, 5, 10, 20
A48	Kowloon International Baptist Church	Community	1.5, 5, 10
A49	Shaw Tower, Hong Kong Baptist University	Educational	1.5, 5, 10, 20, 30, 40
A50	Broadcast Drive Playground	Recreational	1.5
A51	Chun Sing House, Tin Ma Court	Residential	1.5, 5, 10, 20, 30, 40, 50, 60, 70, 80, 90, 100, 110, 120
A52	Podium of Tin Ma Court	Commercial	10
A53	Wang Yiu House, Wang Tau Hom Estate	Residential	1.5, 5, 10, 20, 30, 40, 50, 60, 70, 80
A54	Tin Ma Court Commercial Centre	Commercial	5, 10, 20
A55	Wang Tau Hom Estate Wang Lai House	Educational	1.5, 5, 10, 20, 30, 40, 50, 60, 70, 80
A56	Ka Keung Court Block B	Residential	5, 10, 20, 30, 40, 50, 60, 70, 80, 90, 100, 110, 120, 130, 140
A57	Lok Sin Tong Yu Kan Hing Secondary School	Community	1.5, 5, 10, 20
A58	Fook Tak Monastery	Residential	1.5, 5
A59	CCC Rotary Secondary School	Educational	1.5, 5, 10, 20

AECOM

PROJECT
 IMPROVEMENT OF LION ROCK TUNNEL - INVESTIGATION

CLIENT
 路政署
 HIGHWAYS DEPARTMENT

CONSULTANT
 AECOM Asia Company Ltd.
 www.aecom.com

SUB-CONSULTANTS
 分列工程顧問公司

ISSUE/REVISION

IR	DATE	DESCRIPTION	CHK.

STATUS

SCALE: A3 1:6000 DIMENSION UNIT: METRES

KEY PLAN: A3 1:200000

LEGEND:

- PROJECT BOUNDARY
- 500m ASSESSMENT AREA
- CONTOUR
- AIR SENSITIVE RECEIVERS
- AIR SENSITIVE RECEIVERS (NO SENSITIVE USE AT THIS LEVEL)

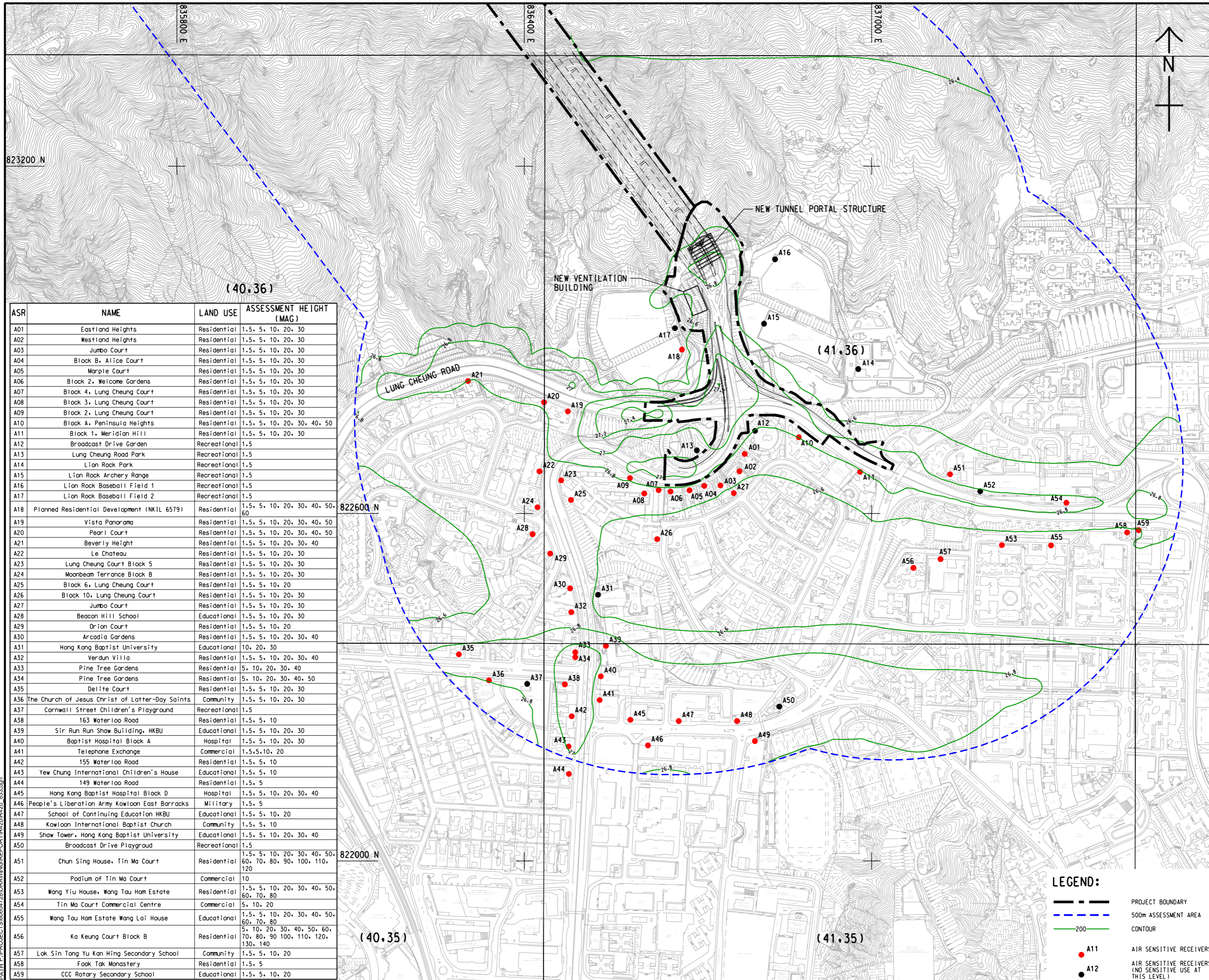
PROJECT NO. 60604728 AGREEMENT NO. CE 48/2018(HY)

SHEET TITLE
 10th HIGHEST CUMULATIVE DAILY RSP CONCENTRATION ($\mu\text{g}/\text{m}^3$) AT 5 mAG, KOWLOON (YEAR 2034)

SHEET NUMBER
 60604728/R42b/FIGURE 3.32

This drawing has been prepared for the use of AECOM's client. It may not be used, modified, reproduced or relied upon by third parties, except as agreed by AECOM or as required by law. AECOM accepts no responsibility, and disclaims any liability whatsoever, for any part, that is used or relied on in this drawing without AECOM's express written consent. All measurements must be obtained from the stated dimensions.

ISO A1 594mm x 841mm
 Approved:
 Checked: 823200 N
 Designer:
 Project Management Initials: (40,36)
 2022/06/24
 File by: WANGDF
 PATH: P:\PROJECTS\6064728\DRAWING\REPORT\1625042b_633.dgn



ASR	NAME	LAND USE	ASSESSMENT HEIGHT (MAG)
A01	Eastland Heights	Residential	1.5, 5, 10, 20, 30
A02	Westland Heights	Residential	1.5, 5, 10, 20, 30
A03	Jumbo Court	Residential	1.5, 5, 10, 20, 30
A04	Block B, Alice Court	Residential	1.5, 5, 10, 20, 30
A05	Marple Court	Residential	1.5, 5, 10, 20, 30
A06	Block 2, Welcome Gardens	Residential	1.5, 5, 10, 20, 30
A07	Block 4, Lung Cheung Court	Residential	1.5, 5, 10, 20, 30
A08	Block 3, Lung Cheung Court	Residential	1.5, 5, 10, 20, 30
A09	Block 2, Lung Cheung Court	Residential	1.5, 5, 10, 20, 30
A10	Block A, Peninsula Heights	Residential	1.5, 5, 10, 20, 30, 40, 50
A11	Block 1, Meridian Hill	Residential	1.5, 5, 10, 20, 30
A12	Broadcast Drive Garden	Recreational	1.5
A13	Lung Cheung Road Park	Recreational	1.5
A14	Lion Rock Park	Recreational	1.5
A15	Lion Rock Archery Range	Recreational	1.5
A16	Lion Rock Baseball Field 1	Recreational	1.5
A17	Lion Rock Baseball Field 2	Recreational	1.5
A18	Planned Residential Development (NKIL 6579)	Residential	1.5, 5, 10, 20, 30, 40, 50, 60
A19	Vista Panorama	Residential	1.5, 5, 10, 20, 30, 40, 50
A20	Pearl Court	Residential	1.5, 5, 10, 20, 30, 40, 50
A21	Beverly Height	Residential	1.5, 5, 10, 20, 30, 40
A22	Le Chateau	Residential	1.5, 5, 10, 20, 30
A23	Lung Cheung Court Block 5	Residential	1.5, 5, 10, 20, 30
A24	Moonbeam Terrace Block B	Residential	1.5, 5, 10, 20, 30
A25	Block 6, Lung Cheung Court	Residential	1.5, 5, 10, 20
A26	Block 10, Lung Cheung Court	Residential	1.5, 5, 10, 20, 30
A27	Jumbo Court	Residential	1.5, 5, 10, 20, 30
A28	Beacon Hill School	Educational	1.5, 5, 10, 20, 30
A29	Orion Court	Residential	1.5, 5, 10, 20
A30	Arcadia Gardens	Residential	1.5, 5, 10, 20, 30, 40
A31	Hong Kong Baptist University	Educational	10, 20, 30
A32	Verdun Villa	Residential	1.5, 5, 10, 20, 30, 40
A33	Pine Tree Gardens	Residential	5, 10, 20, 30, 40
A34	Pine Tree Gardens	Residential	5, 10, 20, 30, 40, 50
A35	Delite Court	Residential	1.5, 5, 10, 20, 30
A36	The Church of Jesus Christ of Latter-Day Saints	Community	1.5, 5, 10, 20, 30
A37	Cornwall Street Children's Playground	Recreational	1.5
A38	163 Waterloo Road	Residential	1.5, 5, 10
A39	Sir Run Run Shaw Building, HKBU	Educational	1.5, 5, 10, 20, 30
A40	Baptist Hospital Block A	Hospital	1.5, 5, 10, 20, 30
A41	Telephone Exchange	Commercial	1.5, 5, 10, 20
A42	155 Waterloo Road	Residential	1.5, 5, 10
A43	Yew Chung International Children's House	Educational	1.5, 5, 10
A44	149 Waterloo Road	Residential	1.5, 5
A45	Hong Kong Baptist Hospital Block D	Hospital	1.5, 5, 10, 20, 30, 40
A46	People's Liberation Army Kowloon East Barracks	Military	1.5, 5
A47	School of Continuing Education HKBU	Educational	1.5, 5, 10, 20
A48	Kowloon International Baptist Church	Community	1.5, 5, 10
A49	Shaw Tower, Hong Kong Baptist University	Educational	1.5, 5, 10, 20, 30, 40
A50	Broadcast Drive Playground	Recreational	1.5
A51	Chun Sing House, Tin Ma Court	Residential	1.5, 5, 10, 20, 30, 40, 50, 60, 70, 80, 90, 100, 110, 120
A52	Podium of Tin Ma Court	Commercial	10
A53	Wang Yiu House, Wang Tau Hom Estate	Residential	1.5, 5, 10, 20, 30, 40, 50, 60, 70, 80
A54	Tin Ma Court Commercial Centre	Commercial	5, 10, 20
A55	Wang Tau Hom Estate Wang Lai House	Educational	1.5, 5, 10, 20, 30, 40, 50, 60, 70, 80
A56	Ka Keung Court Block B	Residential	5, 10, 20, 30, 40, 50, 60, 70, 80, 90, 100, 110, 120, 130, 140
A57	Lok Sin Tong Yu Kan Hing Secondary School	Community	1.5, 5, 10, 20
A58	Fook Tak Monastery	Residential	1.5, 5
A59	CCC Rotary Secondary School	Educational	1.5, 5, 10, 20



PROJECT
 IMPROVEMENT OF
 LION ROCK TUNNEL -
 INVESTIGATION



CONSULTANT
 AECOM Asia Company Ltd.
 www.aecom.com

SUB-CONSULTANTS
 分列工程顧問公司

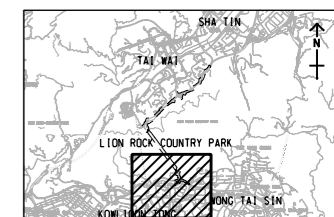
ISSUE/REVISION

IR	DATE	DESCRIPTION	CHK.

STATUS

SCALE **DIMENSION UNIT**
 A3 1 : 6000 METRES

KEY PLAN A3 1 : 200000



PROJECT NO. **AGREEMENT NO.**
 60604728 CE 48/2018(HY)

SHEET TITLE
 CUMULATIVE ANNUAL RSP
 CONCENTRATION (µg/m³)
 at 5 mAG, KOWLOON
 (YEAR 2034)

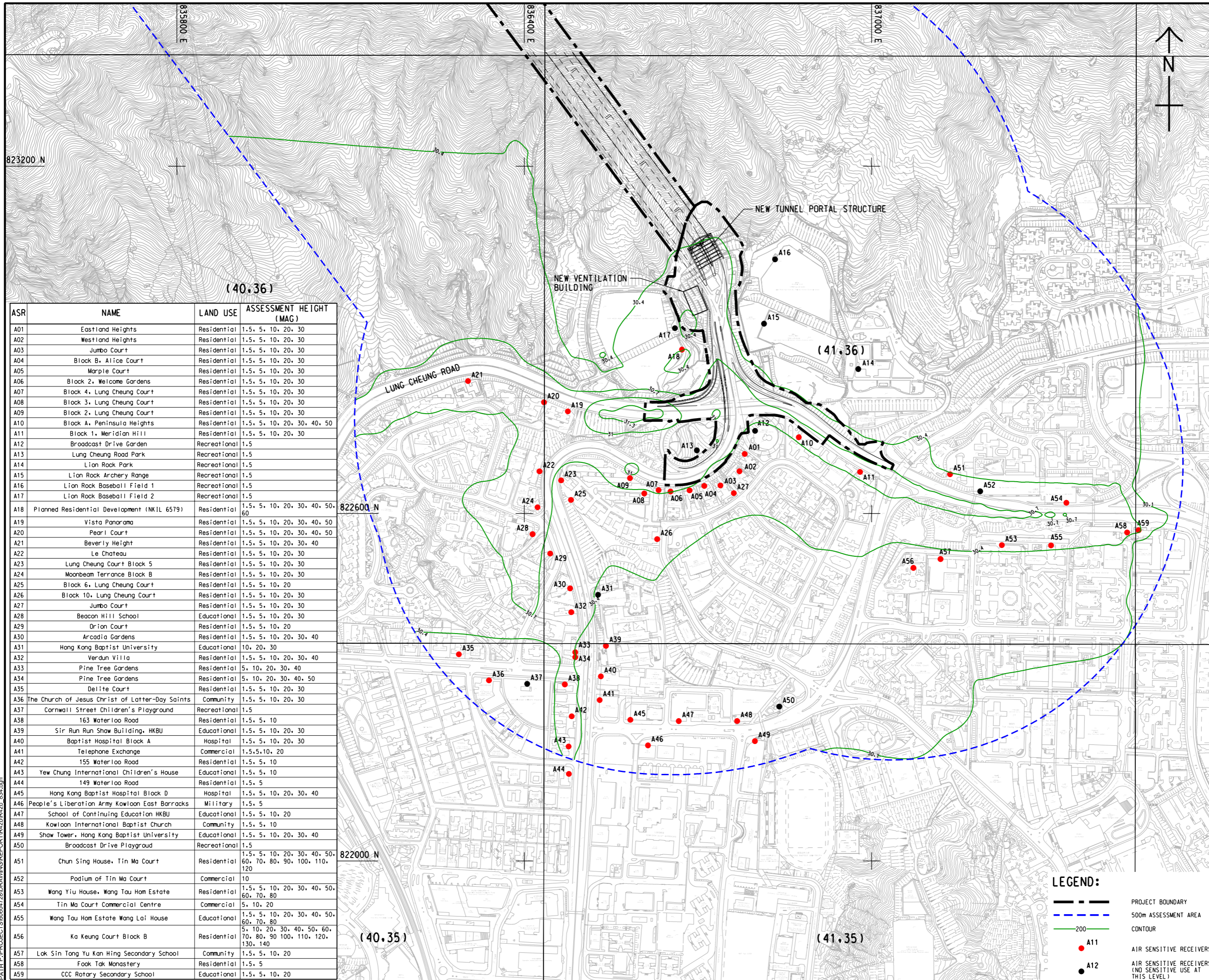
SHEET NUMBER
 60604728/R42b/FIGURE 3.33

LEGEND:

- PROJECT BOUNDARY
- 500m ASSESSMENT AREA
- CONTOUR
- A11
- A12
- AIR SENSITIVE RECEIVERS
- AIR SENSITIVE RECEIVERS (NO SENSITIVE USE AT THIS LEVEL)

This drawing has been prepared for the use of AECOM's client. It may not be used, modified, reproduced or relied upon by third parties, except as agreed by AECOM or as required by law. AECOM accepts no responsibility, and disclaims any liability, whatsoever, for any part, that is used or relied on in this drawing without AECOM's express written consent. All measurements must be obtained from the stated dimensions.

ISO A1 594mm x 841mm
 Approved:
 Checked: 823200 N
 Designer:
 Project Management Initials: (40,36)
 2022/06/23
 PATH PROJECTS/0604728/DRAWING/REPORT/1625042b_834.dgn



ASR	NAME	LAND USE	ASSESSMENT HEIGHT (MAG)
A01	Eastland Heights	Residential	1.5, 5, 10, 20, 30
A02	Westland Heights	Residential	1.5, 5, 10, 20, 30
A03	Jumbo Court	Residential	1.5, 5, 10, 20, 30
A04	Block B, Alice Court	Residential	1.5, 5, 10, 20, 30
A05	Marple Court	Residential	1.5, 5, 10, 20, 30
A06	Block 2, Welcome Gardens	Residential	1.5, 5, 10, 20, 30
A07	Block 4, Lung Cheung Court	Residential	1.5, 5, 10, 20, 30
A08	Block 3, Lung Cheung Court	Residential	1.5, 5, 10, 20, 30
A09	Block 2, Lung Cheung Court	Residential	1.5, 5, 10, 20, 30
A10	Block A, Peninsula Heights	Residential	1.5, 5, 10, 20, 30, 40, 50
A11	Block 1, Meridian Hill	Residential	1.5, 5, 10, 20, 30
A12	Broadcast Drive Garden	Recreational	1.5
A13	Lung Cheung Road Park	Recreational	1.5
A14	Lion Rock Park	Recreational	1.5
A15	Lion Rock Archery Range	Recreational	1.5
A16	Lion Rock Baseball Field 1	Recreational	1.5
A17	Lion Rock Baseball Field 2	Recreational	1.5
A18	Planned Residential Development (NKIL 6579)	Residential	1.5, 5, 10, 20, 30, 40, 50, 60
A19	Vista Panorama	Residential	1.5, 5, 10, 20, 30, 40, 50
A20	Pearl Court	Residential	1.5, 5, 10, 20, 30, 40, 50
A21	Beverly Height	Residential	1.5, 5, 10, 20, 30, 40
A22	Le Chateau	Residential	1.5, 5, 10, 20, 30
A23	Lung Cheung Court Block 5	Residential	1.5, 5, 10, 20, 30
A24	Moonbeam Terrace Block B	Residential	1.5, 5, 10, 20, 30
A25	Block 6, Lung Cheung Court	Residential	1.5, 5, 10, 20
A26	Block 10, Lung Cheung Court	Residential	1.5, 5, 10, 20, 30
A27	Jumbo Court	Residential	1.5, 5, 10, 20, 30
A28	Beacon Hill School	Educational	1.5, 5, 10, 20, 30
A29	Orion Court	Residential	1.5, 5, 10, 20
A30	Arcadia Gardens	Residential	1.5, 5, 10, 20, 30, 40
A31	Hong Kong Baptist University	Educational	10, 20, 30
A32	Verdun Villa	Residential	1.5, 5, 10, 20, 30, 40
A33	Pine Tree Gardens	Residential	5, 10, 20, 30, 40
A34	Pine Tree Gardens	Residential	5, 10, 20, 30, 40, 50
A35	Delite Court	Residential	1.5, 5, 10, 20, 30
A36	The Church of Jesus Christ of Latter-Day Saints	Community	1.5, 5, 10, 20, 30
A37	Cornwall Street Children's Playground	Recreational	1.5
A38	163 Waterloo Road	Residential	1.5, 5, 10
A39	Sir Run Run Shaw Building, HKBU	Educational	1.5, 5, 10, 20, 30
A40	Baptist Hospital Block A	Hospital	1.5, 5, 10, 20, 30
A41	Telephone Exchange	Commercial	1.5, 5, 10, 20
A42	155 Waterloo Road	Residential	1.5, 5, 10
A43	Yew Chung International Children's House	Educational	1.5, 5, 10
A44	149 Waterloo Road	Residential	1.5, 5
A45	Hong Kong Baptist Hospital Block D	Hospital	1.5, 5, 10, 20, 30, 40
A46	People's Liberation Army Kowloon East Barracks	Military	1.5, 5
A47	School of Continuing Education HKBU	Educational	1.5, 5, 10, 20
A48	Kowloon International Baptist Church	Community	1.5, 5, 10
A49	Shaw Tower, Hong Kong Baptist University	Educational	1.5, 5, 10, 20, 30, 40
A50	Broadcast Drive Playground	Recreational	1.5
A51	Chun Sing House, Tin Ma Court	Residential	1.5, 5, 10, 20, 30, 40, 50, 60, 70, 80, 90, 100, 110, 120
A52	Podium of Tin Ma Court	Commercial	10
A53	Wang Yiu House, Wang Tau Hom Estate	Residential	1.5, 5, 10, 20, 30, 40, 50, 60, 70, 80
A54	Tin Ma Court Commercial Centre	Commercial	5, 10, 20
A55	Wang Tau Hom Estate Wang Lai House	Educational	1.5, 5, 10, 20, 30, 40, 50, 60, 70, 80, 90, 100, 110, 120, 130, 140
A56	Ka Keung Court Block B	Residential	5, 10, 20, 30, 40, 50, 60, 70, 80, 90, 100, 110, 120, 130, 140
A57	Lok Sin Tong Yu Kan Hing Secondary School	Community	1.5, 5, 10, 20
A58	Fook Tak Monastery	Residential	1.5, 5
A59	CCC Rotary Secondary School	Educational	1.5, 5, 10, 20

AECOM

PROJECT
 IMPROVEMENT OF LION ROCK TUNNEL - INVESTIGATION

CLIENT
 路政署
 HIGHWAYS DEPARTMENT

CONSULTANT
 AECOM Asia Company Ltd.
 www.aecom.com

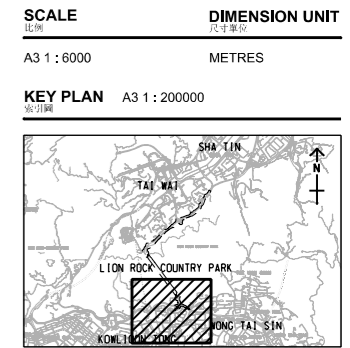
SUB-CONSULTANTS
 分列工程顧問公司

ISSUE/REVISION

IR	DATE	DESCRIPTION	CHK.

STATUS

SCALE: A3 1:200000
 DIMENSION UNIT: METRES



LEGEND:

- PROJECT BOUNDARY
- - - 500m ASSESSMENT AREA
- 200 CONTOUR
- A11 AIR SENSITIVE RECEIVERS
- A12 AIR SENSITIVE RECEIVERS (NO SENSITIVE USE AT THIS LEVEL)

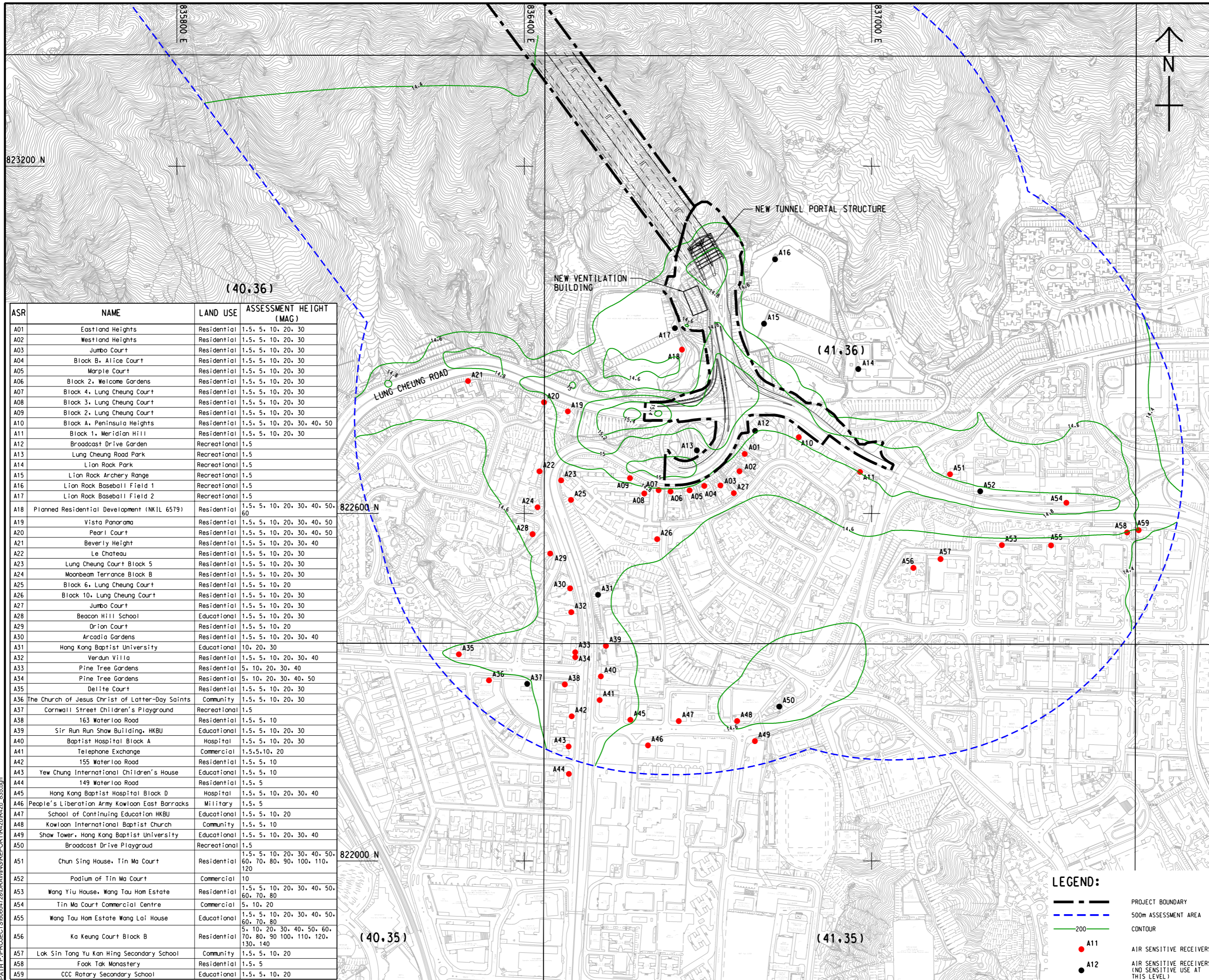
PROJECT NO. 60604728
 AGREEMENT NO. CE 48/2018(HY)

SHEET TITLE
 19th HIGHEST CUMULATIVE DAILY FSP CONCENTRATION ($\mu\text{g}/\text{m}^3$) at 5 MAG, KOWLOON (YEAR 2034)

SHEET NUMBER
 60604728/R42b/FIGURE 3.34

This drawing has been prepared for the use of AECOM's client. It may not be used, modified, reproduced or relied upon by third parties, except as agreed by AECOM or as required by law. AECOM accepts no responsibility, and denies any liability whatsoever, for any part, that is less or more than this drawing, without AECOM's express written consent. All measurements must be obtained from the stated dimensions.

ISO A1 594mm x 841mm
 Approved:
 Checked: 823200 N
 Designer:
 Project Management Initials: (40,36)
 2022/06/24
 File Path: \\P:\PROJECTS\0604728\DRAWING\REPORT\1625042b_835.dgn



ASR	NAME	LAND USE	ASSESSMENT HEIGHT (MAG)
A01	Eastland Heights	Residential	1.5, 5, 10, 20, 30
A02	Westland Heights	Residential	1.5, 5, 10, 20, 30
A03	Jumbo Court	Residential	1.5, 5, 10, 20, 30
A04	Block B, Alice Court	Residential	1.5, 5, 10, 20, 30
A05	Marple Court	Residential	1.5, 5, 10, 20, 30
A06	Block 2, Welcome Gardens	Residential	1.5, 5, 10, 20, 30
A07	Block 4, Lung Cheung Court	Residential	1.5, 5, 10, 20, 30
A08	Block 3, Lung Cheung Court	Residential	1.5, 5, 10, 20, 30
A09	Block 2, Lung Cheung Court	Residential	1.5, 5, 10, 20, 30
A10	Block A, Peninsula Heights	Residential	1.5, 5, 10, 20, 30, 40, 50
A11	Block 1, Meridian Hill	Residential	1.5, 5, 10, 20, 30
A12	Broadcast Drive Garden	Recreational	1.5
A13	Lung Cheung Road Park	Recreational	1.5
A14	Lion Rock Park	Recreational	1.5
A15	Lion Rock Archery Range	Recreational	1.5
A16	Lion Rock Baseball Field 1	Recreational	1.5
A17	Lion Rock Baseball Field 2	Recreational	1.5
A18	Planned Residential Development (NKIL 6579)	Residential	1.5, 5, 10, 20, 30, 40, 50, 60
A19	Vista Panorama	Residential	1.5, 5, 10, 20, 30, 40, 50
A20	Pearl Court	Residential	1.5, 5, 10, 20, 30, 40, 50
A21	Beverly Height	Residential	1.5, 5, 10, 20, 30, 40
A22	Le Chateau	Residential	1.5, 5, 10, 20, 30
A23	Lung Cheung Court Block 5	Residential	1.5, 5, 10, 20, 30
A24	Moonbeam Terrace Block B	Residential	1.5, 5, 10, 20, 30
A25	Block 6, Lung Cheung Court	Residential	1.5, 5, 10, 20
A26	Block 10, Lung Cheung Court	Residential	1.5, 5, 10, 20, 30
A27	Jumbo Court	Residential	1.5, 5, 10, 20, 30
A28	Beacon Hill School	Educational	1.5, 5, 10, 20, 30
A29	Orion Court	Residential	1.5, 5, 10, 20
A30	Arcadia Gardens	Residential	1.5, 5, 10, 20, 30, 40
A31	Hong Kong Baptist University	Educational	10, 20, 30
A32	Verdun Villa	Residential	1.5, 5, 10, 20, 30, 40
A33	Pine Tree Gardens	Residential	5, 10, 20, 30, 40
A34	Pine Tree Gardens	Residential	5, 10, 20, 30, 40, 50
A35	Delite Court	Residential	1.5, 5, 10, 20, 30
A36	The Church of Jesus Christ of Latter-Day Saints	Community	1.5, 5, 10, 20, 30
A37	Cornwall Street Children's Playground	Recreational	1.5
A38	163 Waterloo Road	Residential	1.5, 5, 10
A39	Sir Run Run Shaw Building, HKBU	Educational	1.5, 5, 10, 20, 30
A40	Baptist Hospital Block A	Hospital	1.5, 5, 10, 20, 30
A41	Telephone Exchange	Commercial	1.5, 5, 10, 20
A42	155 Waterloo Road	Residential	1.5, 5, 10
A43	Yew Chung International Children's House	Educational	1.5, 5, 10
A44	149 Waterloo Road	Residential	1.5, 5
A45	Hong Kong Baptist Hospital Block D	Hospital	1.5, 5, 10, 20, 30, 40
A46	People's Liberation Army Kowloon East Barracks	Military	1.5, 5
A47	School of Continuing Education HKBU	Educational	1.5, 5, 10, 20
A48	Kowloon International Baptist Church	Community	1.5, 5, 10
A49	Shaw Tower, Hong Kong Baptist University	Educational	1.5, 5, 10, 20, 30, 40
A50	Broadcast Drive Playground	Recreational	1.5
A51	Chun Sing House, Tin Ma Court	Residential	1.5, 5, 10, 20, 30, 40, 50, 60, 70, 80, 90, 100, 110, 120
A52	Podium of Tin Ma Court	Commercial	10
A53	Wang Yiu House, Wang Tau Hom Estate	Residential	1.5, 5, 10, 20, 30, 40, 50, 60, 70, 80
A54	Tin Ma Court Commercial Centre	Commercial	5, 10, 20
A55	Wang Tau Hom Estate Wang Lai House	Educational	1.5, 5, 10, 20, 30, 40, 50, 60, 70, 80
A56	Ka Keung Court Block B	Residential	5, 10, 20, 30, 40, 50, 60, 70, 80, 90, 100, 110, 120, 130, 140
A57	Lok Sin Tong Yu Kan Hing Secondary School	Community	1.5, 5, 10, 20
A58	Fook Tak Monastery	Residential	1.5, 5
A59	CCC Rotary Secondary School	Educational	1.5, 5, 10, 20

AECOM

PROJECT
 IMPROVEMENT OF LION ROCK TUNNEL - INVESTIGATION

CLIENT
 路政署
 HIGHWAYS DEPARTMENT

CONSULTANT
 AECOM Asia Company Ltd.
 www.aecom.com

SUB-CONSULTANTS
 分列工程顧問公司

ISSUE/REVISION

IR	DATE	DESCRIPTION	CHK.

STATUS

SCALE: A3 1:6000 DIMENSION UNIT: METRES

KEY PLAN: A3 1:200000

PROJECT NO. 60604728 AGREEMENT NO. CE 48/2018(HY)

SHEET TITLE
 CUMULATIVE ANNUAL FSP CONCENTRATION ($\mu\text{g}/\text{m}^3$) AT 5 mAG, KOWLOON (YEAR 2034)

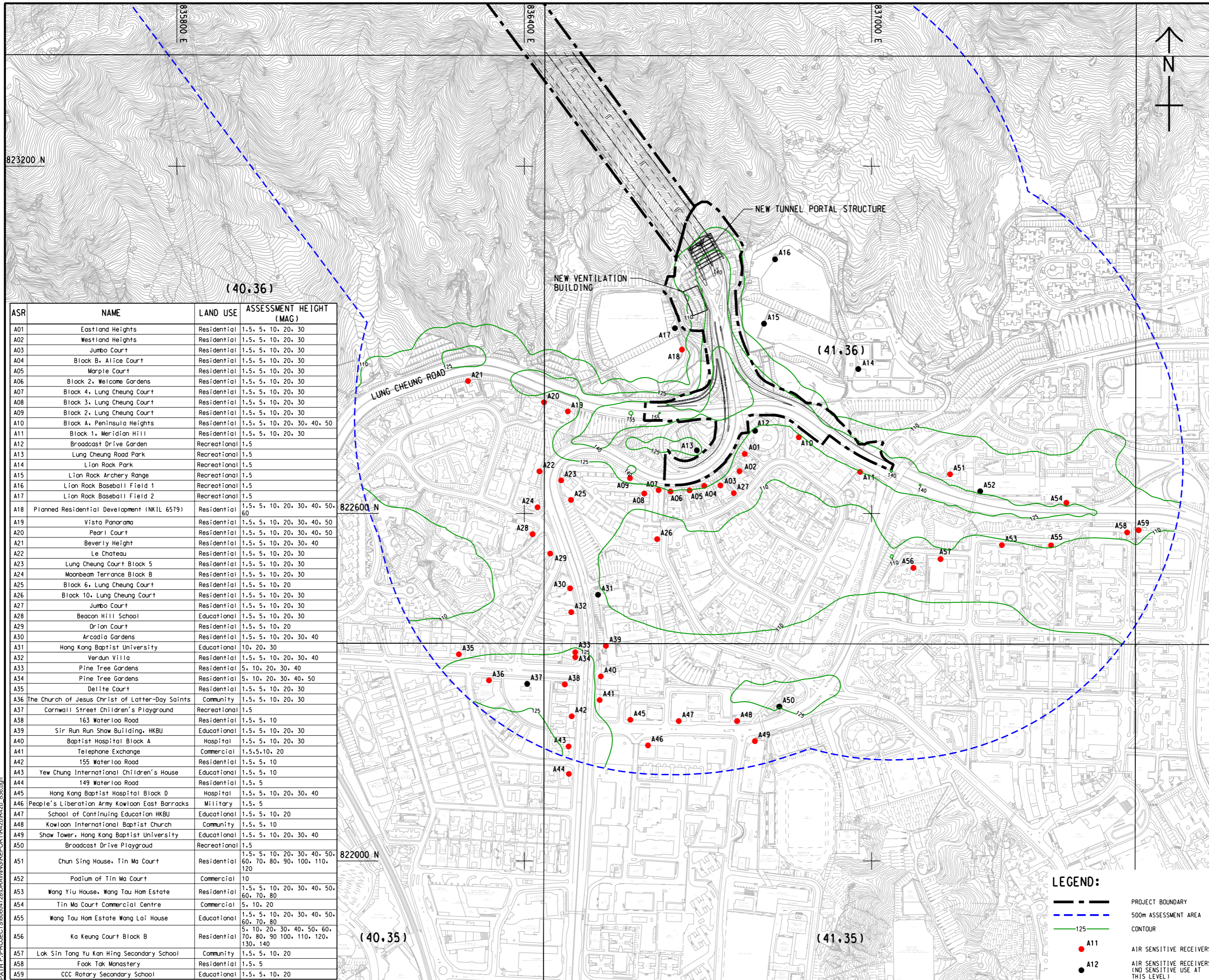
SHEET NUMBER
 60604728/R42b/FIGURE 3.35

LEGEND:

- PROJECT BOUNDARY
- - - 500m ASSESSMENT AREA
- 200 CONTOUR
- A11 AIR SENSITIVE RECEIVERS
- A12 AIR SENSITIVE RECEIVERS (NO SENSITIVE USE AT THIS LEVEL)

This drawing has been prepared for the use of AECOM's client. It may not be used, modified, reproduced or relied upon by third parties, except as agreed by AECOM or as required by law. AECOM accepts no responsibility, and disclaims all liability, whatsoever, for any part, that is used or relied on in this drawing without AECOM's express written consent. All measurements must be obtained from the stated dimensions.

ISO A1 594mm x 841mm
 Approved:
 Checked: 823200 N
 Designer:
 Project Management Initials: (40,36)
 2022/06/24
 File by: WANGDF
 PATH: P:\PROJECTS\0604728\DRAWING\REPORT\19250422_036.dgn



ASR	NAME	LAND USE	ASSESSMENT HEIGHT (MAG)
A01	Eastland Heights	Residential	1.5, 5, 10, 20, 30
A02	Westland Heights	Residential	1.5, 5, 10, 20, 30
A03	Jumbo Court	Residential	1.5, 5, 10, 20, 30
A04	Block B, Alice Court	Residential	1.5, 5, 10, 20, 30
A05	Marple Court	Residential	1.5, 5, 10, 20, 30
A06	Block 2, Welcome Gardens	Residential	1.5, 5, 10, 20, 30
A07	Block 4, Lung Cheung Court	Residential	1.5, 5, 10, 20, 30
A08	Block 3, Lung Cheung Court	Residential	1.5, 5, 10, 20, 30
A09	Block 2, Lung Cheung Court	Residential	1.5, 5, 10, 20, 30
A10	Block A, Peninsula Heights	Residential	1.5, 5, 10, 20, 30, 40, 50
A11	Block 1, Meridian Hill	Residential	1.5, 5, 10, 20, 30
A12	Broadcast Drive Garden	Recreational	1.5
A13	Lung Cheung Road Park	Recreational	1.5
A14	Lion Rock Park	Recreational	1.5
A15	Lion Rock Archery Range	Recreational	1.5
A16	Lion Rock Baseball Field 1	Recreational	1.5
A17	Lion Rock Baseball Field 2	Recreational	1.5
A18	Planned Residential Development (NKIL 6579)	Residential	1.5, 5, 10, 20, 30, 40, 50, 60
A19	Vista Panorama	Residential	1.5, 5, 10, 20, 30, 40, 50
A20	Pearl Court	Residential	1.5, 5, 10, 20, 30, 40, 50
A21	Beverly Height	Residential	1.5, 5, 10, 20, 30, 40
A22	Le Chateau	Residential	1.5, 5, 10, 20, 30
A23	Lung Cheung Court Block 5	Residential	1.5, 5, 10, 20, 30
A24	Moonbeam Terrace Block B	Residential	1.5, 5, 10, 20, 30
A25	Block 6, Lung Cheung Court	Residential	1.5, 5, 10, 20
A26	Block 10, Lung Cheung Court	Residential	1.5, 5, 10, 20, 30
A27	Jumbo Court	Residential	1.5, 5, 10, 20, 30
A28	Beacon Hill School	Educational	1.5, 5, 10, 20, 30
A29	Orion Court	Residential	1.5, 5, 10, 20
A30	Arcadia Gardens	Residential	1.5, 5, 10, 20, 30, 40
A31	Hong Kong Baptist University	Educational	10, 20, 30
A32	Verdun Villa	Residential	1.5, 5, 10, 20, 30, 40
A33	Pine Tree Gardens	Residential	5, 10, 20, 30, 40
A34	Pine Tree Gardens	Residential	5, 10, 20, 30, 40, 50
A35	Delite Court	Residential	1.5, 5, 10, 20, 30
A36	The Church of Jesus Christ of Latter-Day Saints	Community	1.5, 5, 10, 20, 30
A37	Cornwall Street Children's Playground	Recreational	1.5
A38	163 Waterloo Road	Residential	1.5, 5, 10
A39	Sir Run Run Shaw Building, HKBU	Educational	1.5, 5, 10, 20, 30
A40	Baptist Hospital Block A	Hospital	1.5, 5, 10, 20, 30
A41	Telephone Exchange	Commercial	1.5, 5, 10, 20
A42	155 Waterloo Road	Residential	1.5, 5, 10
A43	Yew Chung International Children's House	Educational	1.5, 5, 10
A44	149 Waterloo Road	Residential	1.5, 5
A45	Hong Kong Baptist Hospital Block D	Hospital	1.5, 5, 10, 20, 30, 40
A46	People's Liberation Army Kowloon East Barracks	Military	1.5, 5
A47	School of Continuing Education HKBU	Educational	1.5, 5, 10, 20
A48	Kowloon International Baptist Church	Community	1.5, 5, 10
A49	Shaw Tower, Hong Kong Baptist University	Educational	1.5, 5, 10, 20, 30, 40
A50	Broadcast Drive Playground	Recreational	1.5
A51	Chun Sing House, Tin Ma Court	Residential	1.5, 5, 10, 20, 30, 40, 50, 60, 70, 80, 90, 100, 110, 120
A52	Podium of Tin Ma Court	Commercial	10
A53	Wang Yiu House, Wang Tau Hom Estate	Residential	1.5, 5, 10, 20, 30, 40, 50, 60, 70, 80
A54	Tin Ma Court Commercial Centre	Commercial	5, 10, 20
A55	Wang Tau Hom Estate Wang Lai House	Educational	1.5, 5, 10, 20, 30, 40, 50, 60, 70, 80
A56	Ka Keung Court Block B	Residential	5, 10, 20, 30, 40, 50, 60, 70, 80, 90, 100, 110, 120, 130, 140
A57	Lok Sin Tong Yu Kan Hing Secondary School	Community	1.5, 5, 10, 20
A58	Fook Tak Monastery	Residential	1.5, 5
A59	CCC Rotary Secondary School	Educational	1.5, 5, 10, 20



PROJECT
 IMPROVEMENT OF
 LION ROCK TUNNEL -
 INVESTIGATION

CLIENT
HIGHWAYS DEPARTMENT

CONSULTANT
 AECOM Asia Company Ltd.
 www.aecom.com

SUB-CONSULTANTS
 分列工程顧問公司

ISSUE/REVISION

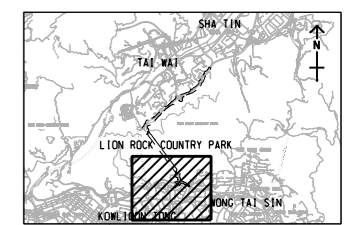
IR	DATE	DESCRIPTION	CHK.

STATUS

19/21

SCALE **DIMENSION UNIT**
 A3 1:6000 METRES

KEY PLAN A3 1:200000



PROJECT NO. **AGREEMENT NO.**
 60604728 CE 48/2018(HY)

SHEET TITLE
 19th HIGHEST CUMULATIVE
 HOURLY NO₂ CONCENTRATION
 (µg/m³) at 5 MAG,
 KOWLOON (YEAR 2034)

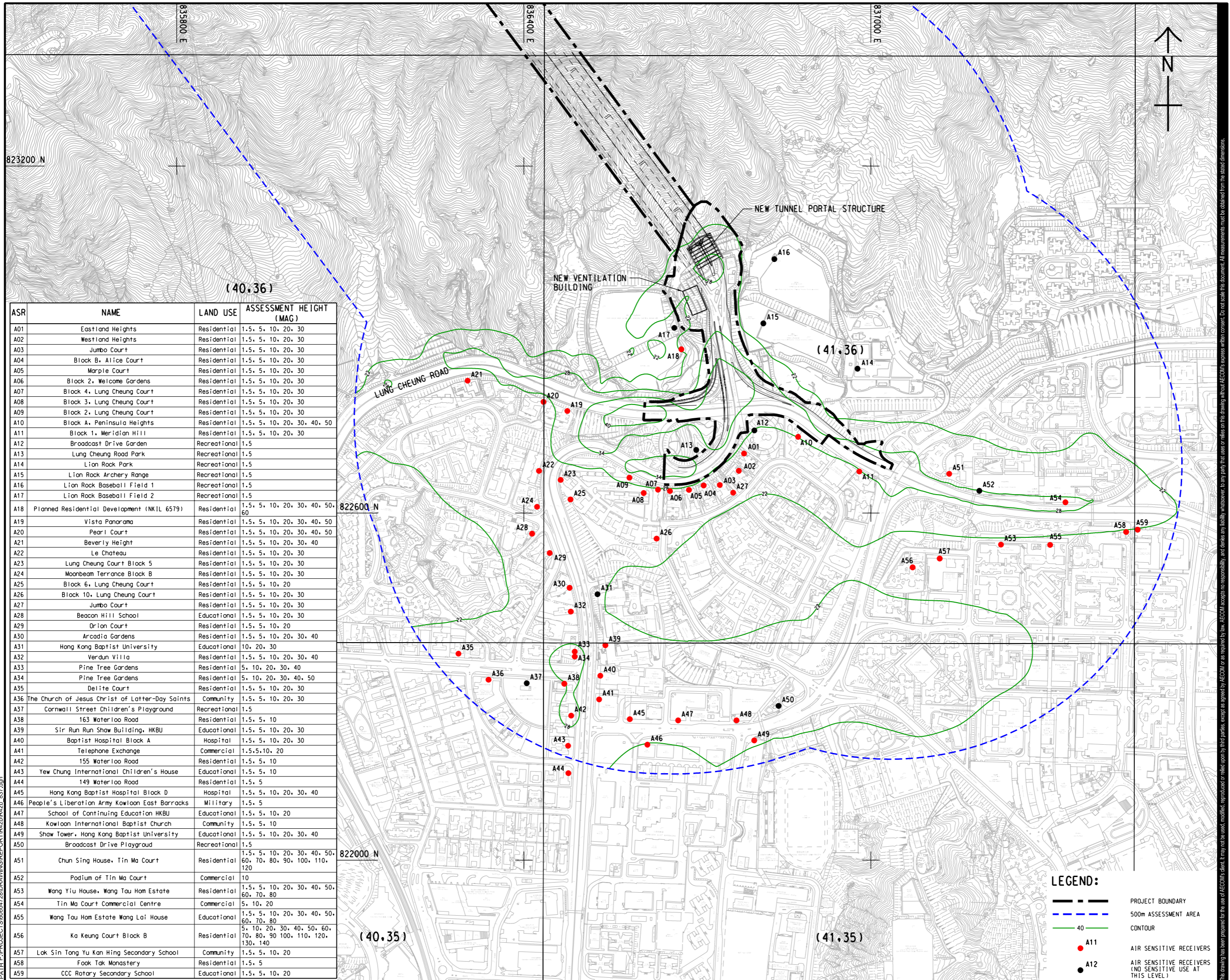
SHEET NUMBER
 60604728/R42/FIGURE 3.36

LEGEND:

- PROJECT BOUNDARY
- 500m ASSESSMENT AREA
- CONTOUR
- A11 AIR SENSITIVE RECEIVERS
- A12 AIR SENSITIVE RECEIVERS (NO SENSITIVE USE AT THIS LEVEL)

This drawing has been prepared for the use of AECOM's client. It may not be used, modified, reproduced or relied upon by third parties, except as agreed by AECOM or as required by law. AECOM accepts no responsibility, and disclaims any liability whatsoever, for any loss, damage or delay on this drawing without AECOM's express written consent. All measurements must be obtained from the stated dimensions.

ISO A1 594mm x 841mm
 Approved:
 Checked: 823200 N
 Designer:
 Project Management Initials: (40,36)
 2022/06/23
 PATH PROJECTS/0604728/DRAWING/REPORT/1622042b_037.dgn



ASR	NAME	LAND USE	ASSESSMENT HEIGHT (MAG)
A01	Eastland Heights	Residential	1.5, 5, 10, 20, 30
A02	Westland Heights	Residential	1.5, 5, 10, 20, 30
A03	Jumbo Court	Residential	1.5, 5, 10, 20, 30
A04	Block B, Alice Court	Residential	1.5, 5, 10, 20, 30
A05	Marple Court	Residential	1.5, 5, 10, 20, 30
A06	Block 2, Welcome Gardens	Residential	1.5, 5, 10, 20, 30
A07	Block 4, Lung Cheung Court	Residential	1.5, 5, 10, 20, 30
A08	Block 3, Lung Cheung Court	Residential	1.5, 5, 10, 20, 30
A09	Block 2, Lung Cheung Court	Residential	1.5, 5, 10, 20, 30
A10	Block A, Peninsula Heights	Residential	1.5, 5, 10, 20, 30, 40, 50
A11	Block 1, Meridian Hill	Residential	1.5, 5, 10, 20, 30
A12	Broadcast Drive Garden	Recreational	1.5
A13	Lung Cheung Road Park	Recreational	1.5
A14	Lion Rock Park	Recreational	1.5
A15	Lion Rock Archery Range	Recreational	1.5
A16	Lion Rock Baseball Field 1	Recreational	1.5
A17	Lion Rock Baseball Field 2	Recreational	1.5
A18	Planned Residential Development (NKIL 6579)	Residential	1.5, 5, 10, 20, 30, 40, 50, 60
A19	Vista Panorama	Residential	1.5, 5, 10, 20, 30, 40, 50
A20	Pearl Court	Residential	1.5, 5, 10, 20, 30, 40, 50
A21	Beverly Height	Residential	1.5, 5, 10, 20, 30, 40
A22	Le Chateau	Residential	1.5, 5, 10, 20, 30
A23	Lung Cheung Court Block 5	Residential	1.5, 5, 10, 20, 30
A24	Moonbeam Terrace Block B	Residential	1.5, 5, 10, 20, 30
A25	Block 6, Lung Cheung Court	Residential	1.5, 5, 10, 20
A26	Block 10, Lung Cheung Court	Residential	1.5, 5, 10, 20, 30
A27	Jumbo Court	Residential	1.5, 5, 10, 20, 30
A28	Beacon Hill School	Educational	1.5, 5, 10, 20, 30
A29	Orion Court	Residential	1.5, 5, 10, 20
A30	Arcadia Gardens	Residential	1.5, 5, 10, 20, 30, 40
A31	Hong Kong Baptist University	Educational	10, 20, 30
A32	Verdun Villa	Residential	1.5, 5, 10, 20, 30, 40
A33	Pine Tree Gardens	Residential	5, 10, 20, 30, 40
A34	Pine Tree Gardens	Residential	5, 10, 20, 30, 40, 50
A35	Delite Court	Residential	1.5, 5, 10, 20, 30
A36	The Church of Jesus Christ of Latter-Day Saints	Community	1.5, 5, 10, 20, 30
A37	Cornwall Street Children's Playground	Recreational	1.5
A38	163 Waterloo Road	Residential	1.5, 5, 10
A39	Sir Run Run Shaw Building, HKBU	Educational	1.5, 5, 10, 20, 30
A40	Baptist Hospital Block A	Hospital	1.5, 5, 10, 20, 30
A41	Telephone Exchange	Commercial	1.5, 5, 10, 20
A42	155 Waterloo Road	Residential	1.5, 5, 10
A43	Yew Chung International Children's House	Educational	1.5, 5, 10
A44	149 Waterloo Road	Residential	1.5, 5
A45	Hong Kong Baptist Hospital Block D	Hospital	1.5, 5, 10, 20, 30, 40
A46	People's Liberation Army Kowloon East Barracks	Military	1.5, 5
A47	School of Continuing Education HKBU	Educational	1.5, 5, 10, 20
A48	Kowloon International Baptist Church	Community	1.5, 5, 10
A49	Shaw Tower, Hong Kong Baptist University	Educational	1.5, 5, 10, 20, 30, 40
A50	Broadcast Drive Playground	Recreational	1.5
A51	Chun Sing House, Tin Ma Court	Residential	1.5, 5, 10, 20, 30, 40, 50, 60, 70, 80, 90, 100, 110, 120
A52	Podium of Tin Ma Court	Commercial	10
A53	Wang Yiu House, Wang Tau Hom Estate	Residential	1.5, 5, 10, 20, 30, 40, 50, 60, 70, 80
A54	Tin Ma Court Commercial Centre	Commercial	5, 10, 20
A55	Wang Tau Hom Estate Wang Lai House	Educational	1.5, 5, 10, 20, 30, 40, 50, 60, 70, 80
A56	Ka Keung Court Block B	Residential	5, 10, 20, 30, 40, 50, 60, 70, 80, 90, 100, 110, 120, 130, 140
A57	Lok Sin Tong Yu Kan Hing Secondary School	Community	1.5, 5, 10, 20
A58	Fook Tak Monastery	Residential	1.5, 5
A59	CCC Rotary Secondary School	Educational	1.5, 5, 10, 20

AECOM

PROJECT
 IMPROVEMENT OF LION ROCK TUNNEL - INVESTIGATION

CLIENT
 路政署
HIGHWAYS DEPARTMENT

CONSULTANT
 AECOM Asia Company Ltd.
 www.aecom.com

SUB-CONSULTANTS
 分列工程顧問公司

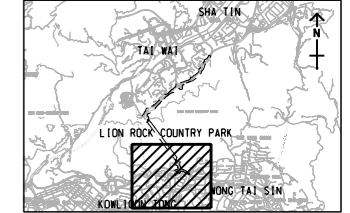
ISSUE/REVISION

IR	DATE	DESCRIPTION	CHK.

STATUS

SCALE: A3 1:6000 DIMENSION UNIT: METRES

KEY PLAN: A3 1:200000



PROJECT NO.: 60604728 AGREEMENT NO.: CE 48/2018(HY)

SHEET TITLE: CUMULATIVE ANNUAL NO₂ CONCENTRATION (µg/m³) AT 5 mAG, KOWLOON (YEAR 2034)

SHEET NUMBER: 60604728/R42b/FIGURE 3.37

LEGEND:

- PROJECT BOUNDARY
- 500m ASSESSMENT AREA
- 40
- 50
- A11
- A12
- AIR SENSITIVE RECEIVERS
- AIR SENSITIVE RECEIVERS (NO SENSITIVE USE AT THIS LEVEL)

This drawing has been prepared for the use of AECOM's client. It may not be used, modified, reproduced or relied upon by third parties, except as agreed by AECOM or as required by law. AECOM accepts no responsibility, and disclaims any liability, whatsoever, for any part, that is less or more than this drawing, without AECOM's express written consent. All measurements must be obtained from the stated dimensions.