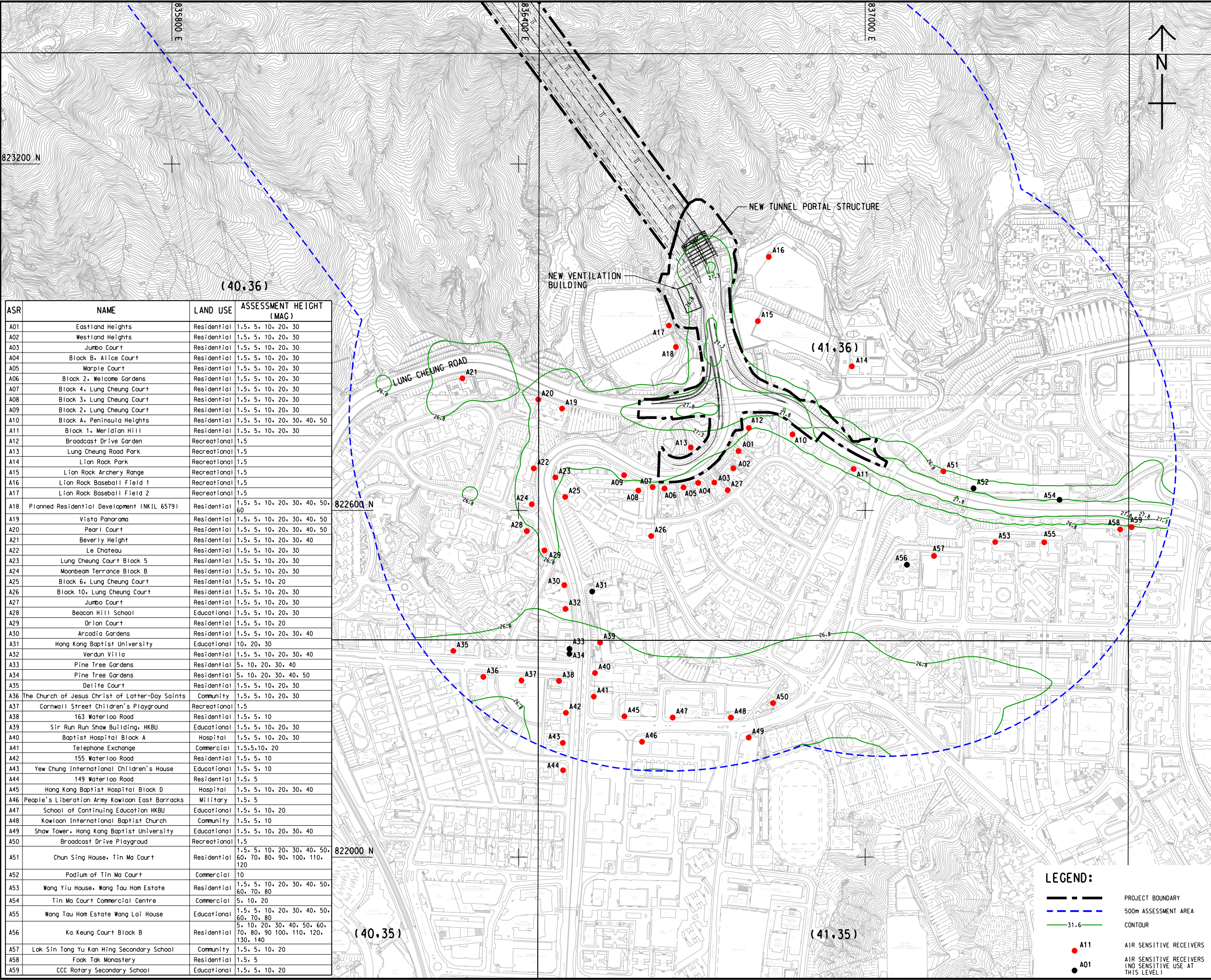


ISO A1 594mm x 841mm
Approved:
Checked:
Designer:
Project Management Initials:
2022/06/23
PLOT FILE BY: ZHLZ
PLOT FILE NO: 60604728/DRAWING REPORT/42b/42b_027.dgn



ASR	NAME	LAND USE	ASSESSMENT HEIGHT (MAG)
A01	Eastland Heights	Residential	1.5, 5, 10, 20, 30
A02	Westland Heights	Residential	1.5, 5, 10, 20, 30
A03	Jumbo Court	Residential	1.5, 5, 10, 20, 30
A04	Block B, Alice Court	Residential	1.5, 5, 10, 20, 30
A05	Marple Court	Residential	1.5, 5, 10, 20, 30
A06	Block 2, Welcome Gardens	Residential	1.5, 5, 10, 20, 30
A07	Block 4, Lung Cheung Court	Residential	1.5, 5, 10, 20, 30
A08	Block 3, Lung Cheung Court	Residential	1.5, 5, 10, 20, 30
A09	Block 2, Lung Cheung Court	Residential	1.5, 5, 10, 20, 30
A10	Block A, Peninsula Heights	Residential	1.5, 5, 10, 20, 30, 40, 50
A11	Block 1, Meridian Hill	Residential	1.5, 5, 10, 20, 30
A12	Broadcast Drive Garden	Recreational	1.5
A13	Lung Cheung Road Park	Recreational	1.5
A14	Lion Rock Park	Recreational	1.5
A15	Lion Rock Archery Range	Recreational	1.5
A16	Lion Rock Baseball Field 1	Recreational	1.5
A17	Lion Rock Baseball Field 2	Recreational	1.5
A18	Planned Residential Development (NKL 6579)	Residential	1.5, 5, 10, 20, 30, 40, 50, 60
A19	Vista Panorama	Residential	1.5, 5, 10, 20, 30, 40, 50
A20	Pearl Court	Residential	1.5, 5, 10, 20, 30, 40, 50
A21	Beverly Height	Residential	1.5, 5, 10, 20, 30, 40
A22	Le Chateau	Residential	1.5, 5, 10, 20, 30
A23	Lung Cheung Court Block 5	Residential	1.5, 5, 10, 20, 30
A24	Moonbeam Terrace Block B	Residential	1.5, 5, 10, 20, 30
A25	Block 6, Lung Cheung Court	Residential	1.5, 5, 10, 20
A26	Block 10, Lung Cheung Court	Residential	1.5, 5, 10, 20, 30
A27	Jumbo Court	Residential	1.5, 5, 10, 20, 30
A28	Beacon Hill School	Educational	1.5, 5, 10, 20, 30
A29	Orion Court	Residential	1.5, 5, 10, 20
A30	Arcadia Gardens	Residential	1.5, 5, 10, 20, 30, 40
A31	Hong Kong Baptist University	Educational	10, 20, 30
A32	Verdun Villa	Residential	1.5, 5, 10, 20, 30, 40
A33	Pine Tree Gardens	Residential	5, 10, 20, 30, 40
A34	Pine Tree Gardens	Residential	5, 10, 20, 30, 40, 50
A35	Delite Court	Residential	1.5, 5, 10, 20, 30
A36	The Church of Jesus Christ of Latter-Day Saints	Community	1.5, 5, 10, 20, 30
A37	Cornwall Street Children's Playground	Recreational	1.5
A38	163 Waterloo Road	Residential	1.5, 5, 10
A39	Sir Run Run Shaw Building, HKBU	Educational	1.5, 5, 10, 20, 30
A40	Baptist Hospital Block A	Hospital	1.5, 5, 10, 20, 30
A41	Telephone Exchange	Commercial	1.5, 5, 10, 20
A42	155 Waterloo Road	Residential	1.5, 5, 10
A43	Yew Chung International Children's House	Educational	1.5, 5, 10
A44	149 Waterloo Road	Residential	1.5, 5
A45	Hong Kong Baptist Hospital Block D	Hospital	1.5, 5, 10, 20, 30, 40
A46	People's Liberation Army Kowloon East Barracks	Military	1.5, 5
A47	School of Continuing Education HKBU	Educational	1.5, 5, 10, 20
A48	Kowloon International Baptist Church	Community	1.5, 5, 10
A49	Shaw Tower, Hong Kong Baptist University	Educational	1.5, 5, 10, 20, 30, 40
A50	Broadcast Drive Playgroud	Recreational	1.5
A51	Chun Sing House, Tin Ma Court	Residential	1.5, 5, 10, 20, 30, 40, 50, 60, 70, 80, 90, 100, 110, 120
A52	Podium of Tin Ma Court	Commercial	10
A53	Wang Yiu House, Wang Tau Hom Estate	Residential	1.5, 5, 10, 20, 30, 40, 50, 60, 70, 80
A54	Tin Ma Court Commercial Centre	Commercial	5, 10, 20
A55	Wang Tau Hom Estate Wang Lai House	Educational	1.5, 5, 10, 20, 30, 40, 50, 60, 70, 80
A56	Ka Keung Court Block B	Residential	5, 10, 20, 30, 40, 50, 60, 70, 80, 90, 100, 110, 120, 130, 140
A57	Lok Sin Tong Yu Kan Hing Secondary School	Community	1.5, 5, 10, 20
A58	Fook Tak Monastery	Residential	1.5, 5
A59	CCC Rotary Secondary School	Educational	1.5, 5, 10, 20

LEGEND:

31.6

A11

A01

PROJECT BOUNDARY

500m ASSESSMENT AREA

CONTOUR

AIR SENSITIVE RECEIVERS

AIR SENSITIVE RECEIVERS (NO SENSITIVE USE AT THIS LEVEL)



PROJECT
IMPROVEMENT OF
LION ROCK TUNNEL -
INVESTIGATION

CLIENT
路政署
HIGHWAYS
DEPARTMENT

CONSULTANT
AECOM Asia Company Ltd.
www.aecom.com

SUB-CONSULTANTS
分判工程顧問公司

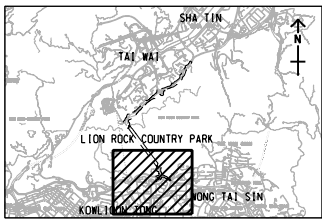
ISSUE/REVISION

I/R	DATE	DESCRIPTION	CHK.

STATUS

SCALE
A3 1:6000
DIMENSION UNIT
METRES

KEY PLAN
A3 1:200000



PROJECT NO.
60604728
AGREEMENT NO.
CE 48/2018(HY)

SHEET TITLE
CUMULATIVE ANNUAL RSP
CONCENTRATION (µg/m³)
AT 1.5 mAG, KOWLOON
(YEAR 2034)
SHEET NUMBER
60604728/R42b/FIGURE 3.27